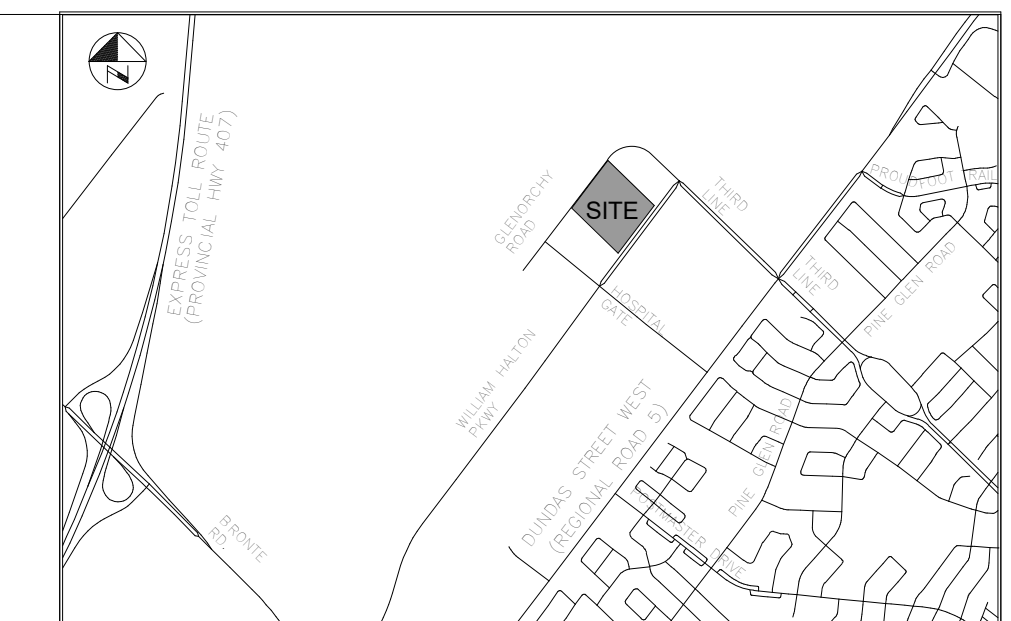


ELECTRICAL DRAWING LIST	
NO.	DRAWING NAME
E001	ELECTRICAL LEGENDS AND DETAILS
E101	ELECTRICAL SITE PLAN - PHASE 1
E102	ELECTRICAL SITE PLAN - PHASE 2

ELECTRICAL LEGEND	
LIGHTING FIXTURES	
	POLE MOUNTED AREA LIGHT

LIGHTING FIXTURE SCHEDULE																		
TAG	DESCRIPTION	MANUFACTURER	SERIES	NOMINAL SIZE	PHYSICAL CHARACTERISTICS				ELECTRICAL CHARACTERISTICS					NOTES	REV			
					HOUSING FINISH	COLOUR	TYPE	HEIGHT	VOLTS	LOAD	LUMENS	CCT	CRI			DRIVER	ACCESSORIES	
P: POLE LIGHT																		
P10	EVOLVE LED COBRA HEAD	GE	ERLH	22" x 13 1/2" x 4"	WET	ALU	GRAY	PWD	POLE	9.14m AFG	TYPE II ENHANCED BACKLIGHT	120 V	98 VA	11500lm	4000K	70 CRI		ARM MOUNTING (2.4m)
P20	EVOLVE LED COBRA HEAD	GE	ERL2	22" x 13 1/2" x 4"	WET	ALU	GRAY	PWD	POLE	9.14m AFG	TYPE III	120 V	120 VA	15000lm	4000K	70 CRI		ARM MOUNTING (2.4m)



KEY PLAN

DRAFT
NOT TO BE USED FOR CONSTRUCTION

BENCHMARK:
ELEVATIONS ARE REFERRED TO THE TOWN OF OAKVILLE BENCHMARK NO. 273, BEING A CUT CROSS SET IN BASE OF HYDRO TRANSFORMER PAD AT INTERSECTION OF OLD BRONTE ROAD AND DUNDAS STREET WEST REGIONAL ROAD 5J AT 6252 OLD BRONTE ROAD (PALERMO PLAZA), CUT CROSS SET IN NORTHEAST CORNER OF HYDRO TRANSFORMER # 12008 LOCATED AT SOUTHWEST CORNER OF INTERSECTION.

ELEVATION OF 154.275 m
VERTICAL DATUM: CANADIAN GEODETIC DATUM, 1928 (CGVD 1978 SOUTHERN ONTARIO READJUSTMENT)

No.	Date	By	REVISIONS	MANU	CAD
2	2026-04-30	A.D.	ISSUED FOR TOWN OF OAKVILLE REVIEW		
1	2026-02-09	A.D.	ISSUED FOR REVIEW		

Design	A.D.	Ch'kd	T.D.	Date
Drawn	A.D.	Ch'kd	T.D.	MARCH 2026

Scale	References

APPROVALS	Field Notes

MUNICIPAL:
APPROVED IN PRINCIPLE SUBJECT TO DETAILS CONSTRUCTION CONFORMING TO TOWN OF OAKVILLE STANDARDS AND SPECIFICATIONS

MANAGER OF DEVELOPMENT ENGINEERING: [Signature]

REGIONAL:
APPROVED DESIGN OF SANITARY, WATER SERVICES AND REGIONAL ROAD WORKS APPROVED SUBJECT TO DETAILS CONSTRUCTION CONFORMING TO HALTON REGION STANDARDS & SPECIFICATIONS & LOCAL APPROVAL FROM AREA MUNICIPALITY

LEGISLATIVE AND PLANNING SERVICES: [Signature]

LICENSÉD PROFESSIONAL ENGINEER
T. W. DIETRICH
100109459
2026-04-30
PROVINCE OF ONTARIO
2026-0550-10

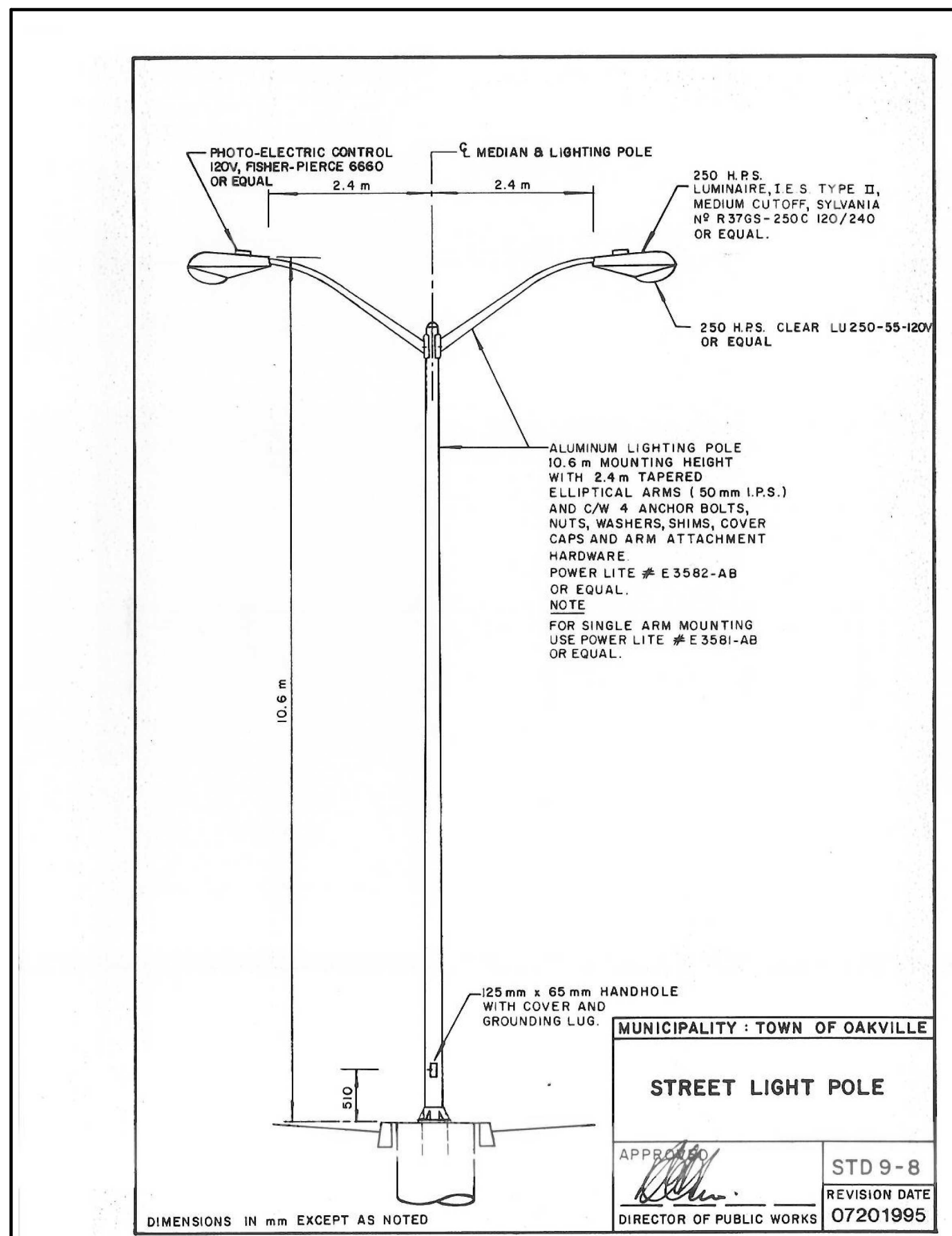
WALTER FEDY

OAKVILLE
Town of Oakville
Regional Municipality of Halton

INFRASTRUCTURE ONTARIO
MECP - MLTSD SCIENCE COMPLEX

Consultant File No. 2025-0550-10
Town Drawing No.

Planning Approval File No. Drawing No. E100



1 TRANSPORTATION STANDARD DRAWING 9-8
Scale: N.T.S.

Evolve®
ERLH Cobra Head
LED Roadway Lighting

The Evolve® LED Roadway ERLH Luminaire is optimized utilizing advanced LED reflective optical system for local, collector and major roadways. The modern design incorporates the heat sink directly into the unit for heat transfer to prolong LED life.

CUSTOMER NAME _____
PROJECT NAME _____
DATE _____ TYPE _____
CATALOG NUMBER _____

Construction
Housing: Aluminum die cast enclosure casting integral heat sink for maximum heat transfer
Lens: Impact resistant tempered glass
Paint: (RAL & custom colors available) Standard = Black, Dark Bronze, Gray, White Optional = Coastal Finish
Weight: 15.15 lbs (6.9 kgs) w/ 2 Bolt Slipfitter 15.85 lbs (7.2 kgs) w/ 4 Bolt Slipfitter

Lumen Maintenance
Projected Lxx per IES TM-21-11 at 25°C

LUMEN CODES	LXX(HOURS) @ HOURS		
	25,000 HR	50,000 HR	60,000 HR
A3, B3, C3, D3, E3	10,11	L97	L96
A3, B3, C3, D3, E3	13,14	L95	L93
A3, B3, C3, D3, E3	15,16	L94	L91

Note: Projected Lxx based on LM80 @ 10,000 hour testing. Accepted industry

Optical System
Lumens: 10,000-16,000
Distribution: Type II Narrow, Type II Wide, Type II, Type IV and Type II Enhanced Back Light
Efficacy: 110-143 LPW
CCT: 2700K, 3000K, 4000K
CRI: ≥70

Electrical
Input Voltage: 120-277V or 347-480V
Input Frequency: 50/60Hz
Power Factor: ≥ 90% at rated watts
Total Harmonic Distortion: ≤ 20% at rated watts

Surge Protection*
STANDARD: 10kV/5kA
OPTIONAL: Secondary 10kV/5kA (R Option) or Secondary 20kV/10kA (T Option)

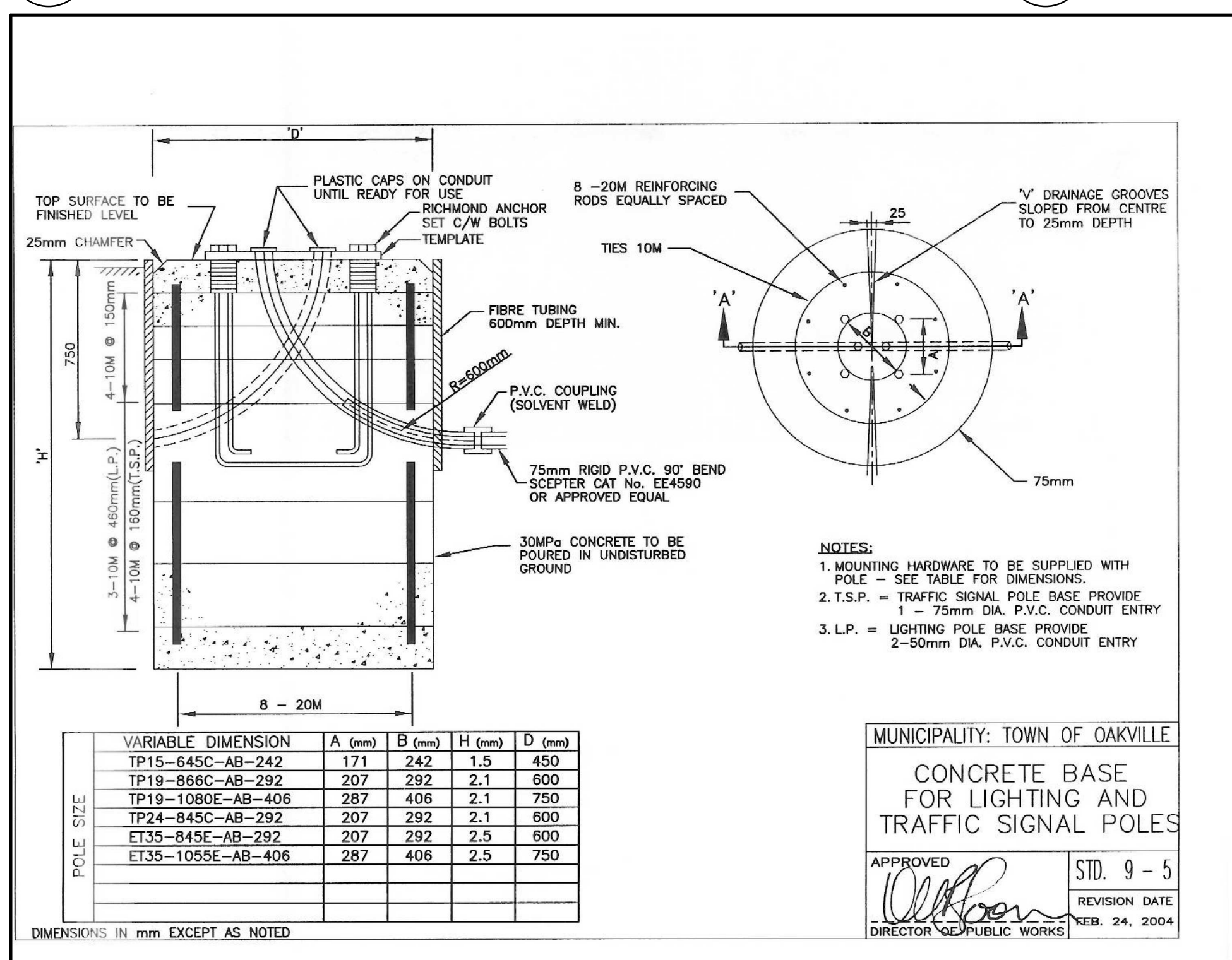
Ratings
Operating Temperature: ERLH Lumen outputs 10-11, 13 (-40°C to 50°C)
ERLH Lumen outputs 14-16 (-40°C to 45°C)
Vibration: 3G per ANSI C136.31-2018
LM-79: Testing in accordance with IES Standards

Controls
Dimming: Standard - 0-10V
Optional - DALI (Option U)
Sensors: Photo Electric Sensors (PE) available
LightGrid™ Compatible

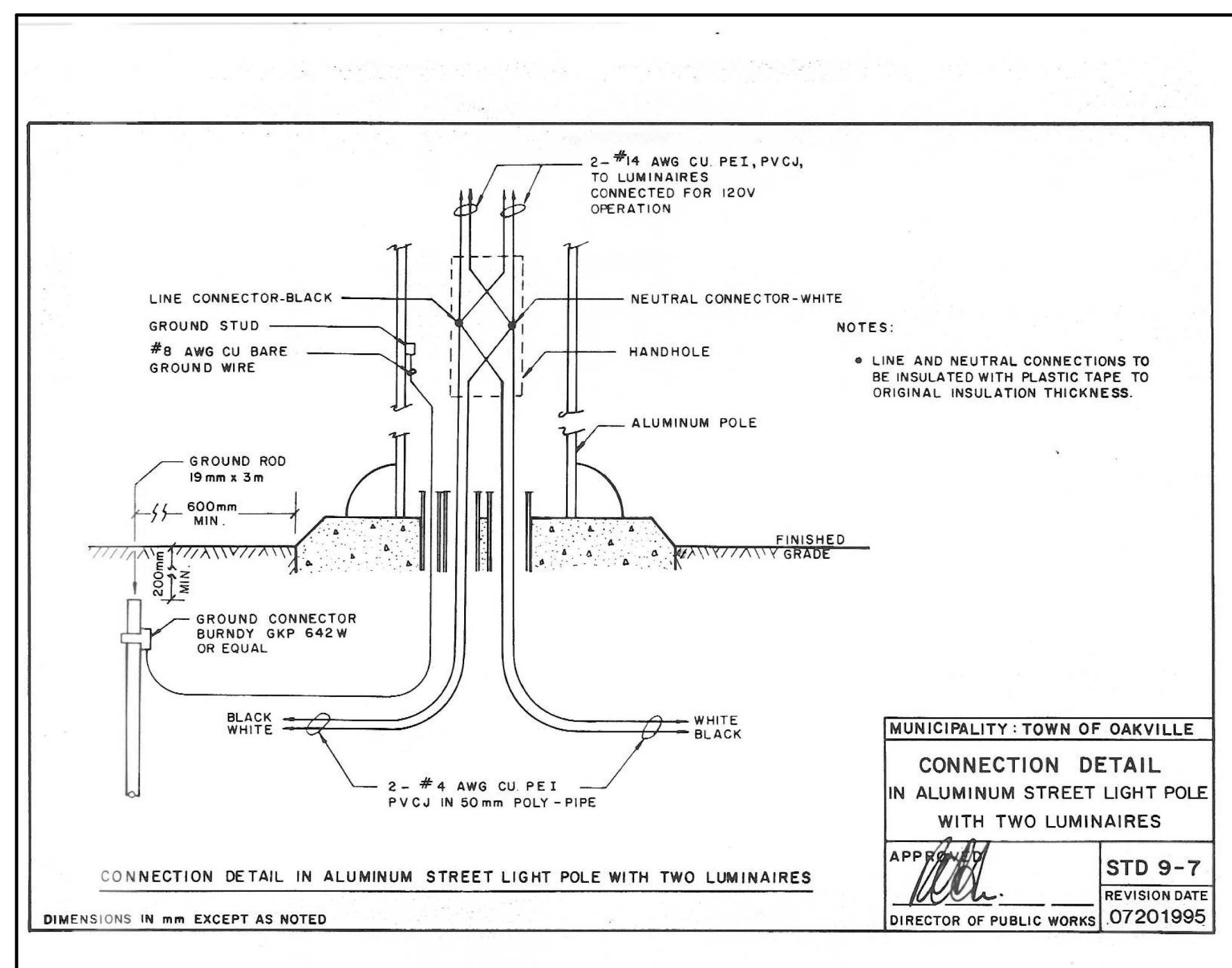
Warranty
5 Year (Standard) 10 Year (Optional)

Current®
gecurrent.com/brands/evolve
© 2025 Current Lighting Solutions, LLC. All rights reserved. GE and the GE monogram are trademarks of the General Electric Company and are used under license. Information and specifications subject to change without notice. All values are design or typical values when measured under laboratory conditions.
Rev: January 29, 2025 10:28 AM
OLP2524_ERLH_GEN3_B03

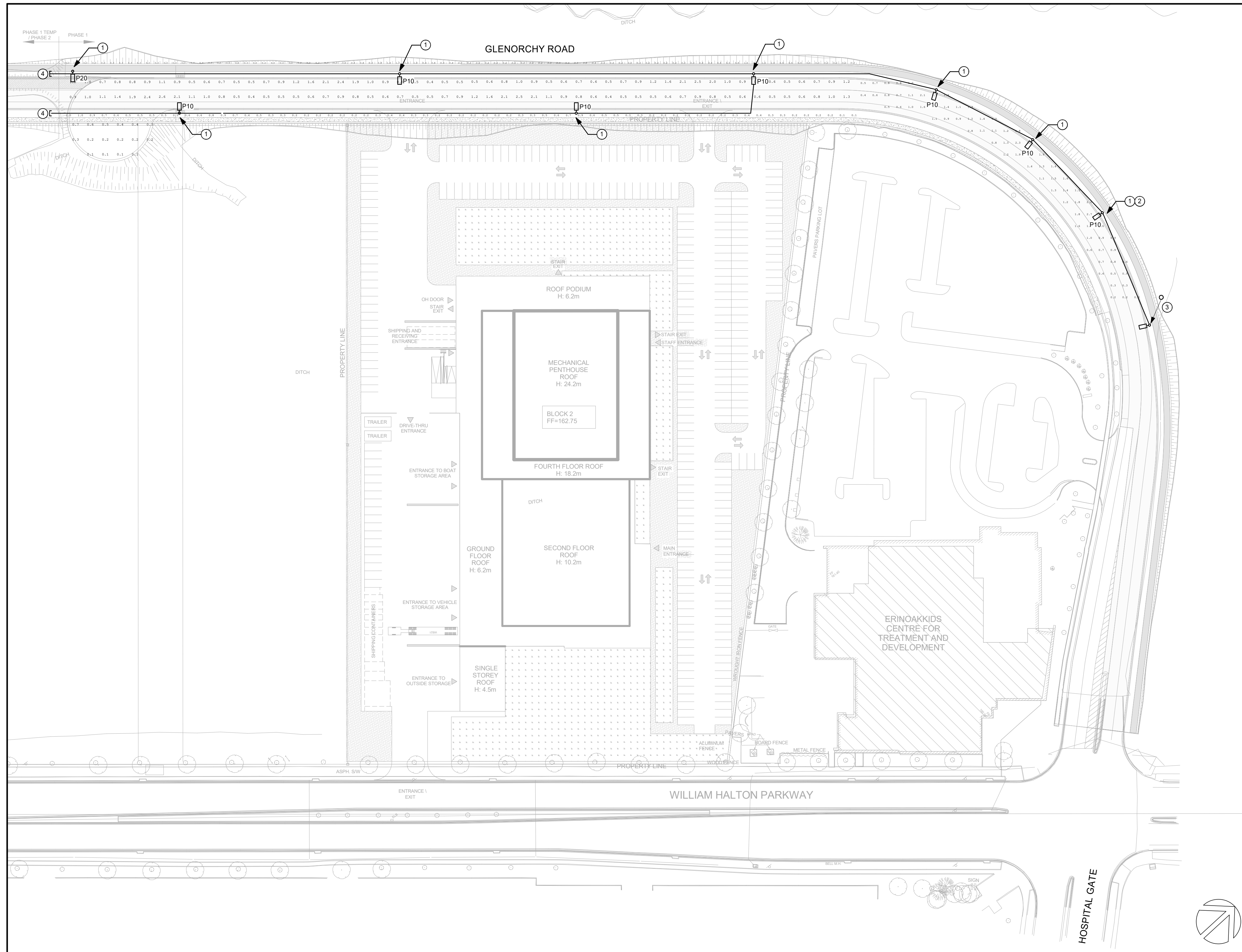
2 FIXTURE CUTSHEET
Scale: N.T.S.



3 TRANSPORTATION STANDARD DRAWING 9-5
Scale: N.T.S.



4 TRANSPORTATION STANDARD DRAWING 9-7
Scale: N.T.S.



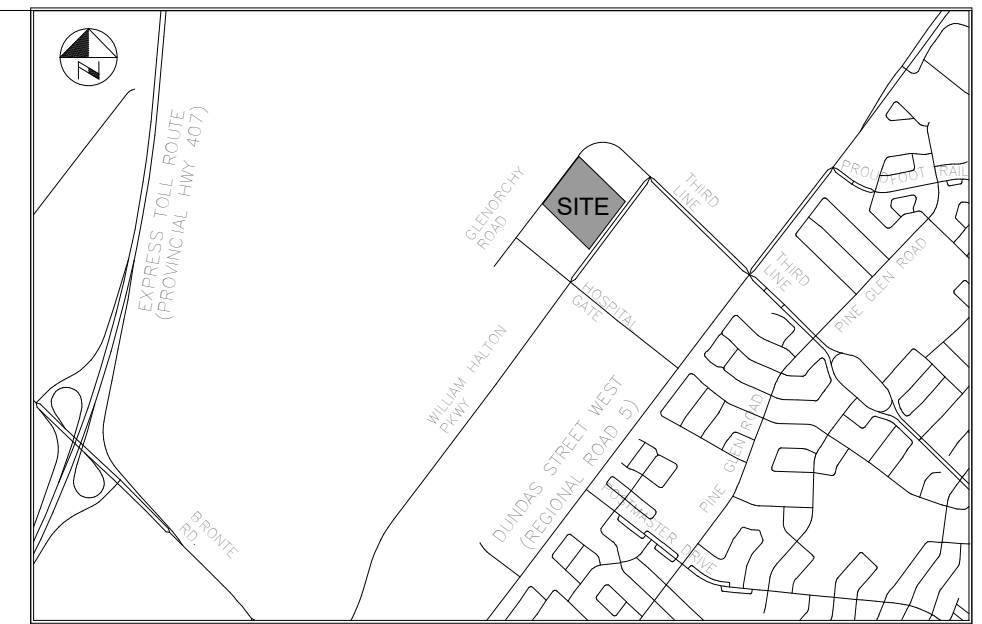
1 ELECTRICAL SITE PLAN - PHASE 1
E101 Scale: 1 : 750

DRAWING NOTES:

- 1 ALL LIGHTING FIXTURES INDICATED SHALL BE EQUIPPED WITH GE LIGHTING'S LIGHTGRID NODES MOUNTED ON THE FIXTURE'S 7-PIN NEMA TWIST LOCK RECEPTACLES. LIGHTGRID NODE SHALL BE FROM GE MODEL #ELW04SUGS.
- 2 THE LIGHTING NODES FOR ALL FIXTURES SHALL BE CONTROLLED THROUGH GE LIGHTGRID GATEWAY + MODEM. GATEWAY SHALL BE FROM GE MODEL #ELW04CGRA. LOCATION FOR GE GATEWAY SHOWN IS FOR THE DESIGN INTEN ONLY. ACTUAL LOCATION SHALL BE VERIFIED ON SITE IN CONSULTATION WITH IT AND FACILITY DESIGN FROM THE TOWN OF OAKVILLE PUBLIC WORK OPERATIONS DIVISION.
- 3 EXISTING FIXTURE AND POLE TO BE RELOCATED TO THIS LOCATION. PROVIDE NEW CONCRETE BASE. REWORK ELECTRICAL FEED.
- 4 TERMINATE AND CAP CONDUIT FOR FUTURE DEVELOPMENT OF WORK RELATED TO PHASE 2. PROVIDE ONLY CONDUIT, NO WIRING.

GENERAL NOTES:

1. INDICATING DESIGN PREPARED BY THE CONTRACTING AUTHORITY TO IDENTIFY QUANTITIES AND SCOPE. FINALIZING DESIGN AND OBTAINING APPROVALS IS THE RESPONSIBILITY OF THE PROJECT CO.



KEY PLAN
N.T.S.

DRAFT

NOT TO BE USED FOR CONSTRUCTION

BENCHMARK:
ELEVATIONS ARE REFERRED TO THE TOWN OF OAKVILLE BENCHMARK No. 273, BEING A CUT CROSS SET IN BASE OF HYDRO TRANSFORMER PAD AT INTERSECTION OF OLD BRONTE ROAD AND DUNDAS STREET WEST REGIONAL ROAD 5J AT 8252 OLD BRONTE ROAD (PALERMO PLAZA), CUT CROSS SET IN NORTHEAST CORNER OF HYDRO TRANSFORMER # 12008 LOCATED AT SOUTHWEST CORNER OF INTERSECTION.

ELEVATION OF 154.275 m
VERTICAL DATUM: CANADIAN GEODETIC DATUM, 1928 (CGVD 1978 SOUTHERN ONTARIO READJUSTMENT)

2	2026-04-30	A.D.	ISSUED FOR TOWN OF OAKVILLE REVIEW
1	2026-02-09	A.D.	ISSUED FOR REVIEW

No.	Date	By	REVISIONS		MANU/CAD
Design	A.D.	Ch'kd	T.D.	Date	
Drawn	A.D.	Ch'kd	T.D.	MARCH 2026	

Scale	References
-------	------------

APPROVALS	Field Notes
-----------	-------------

MUNICIPAL:
APPROVED IN PRINCIPLE SUBJECT TO DETAILS CONSTRUCTION CONFORMING TO TOWN OF OAKVILLE STANDARDS AND SPECIFICATIONS.

MANAGER OF DEVELOPMENT ENGINEERING: [Signature]

REGIONAL:
APPROVED DESIGN OF SANITARY, WATER SERVICES AND REGIONAL ROAD WORKS APPROVED SUBJECT TO DETAILS CONSTRUCTION CONFORMING TO HALTON REGION STANDARDS & SPECIFICATIONS & LOCAL APPROVAL FROM AREA MUNICIPALITY.

LEGISLATIVE AND PLANNING SERVICES: [Signature]

LICENSURE PROFESSIONAL ENGINEER
T. W. DIETRICH
100109459
2026-04-30
PROVINCE OF ONTARIO
2026-0550-10

WALTER FEDY

Town of Oakville
Regional Municipality of Halton

INFRASTRUCTURE ONTARIO
MECP - MLTSD SCIENCE COMPLEX

Consultant File No. 2025-0550-10	Town Drawing No.
-------------------------------------	------------------

Planning Approval File No.	Drawing No. E101
----------------------------	----------------------------

