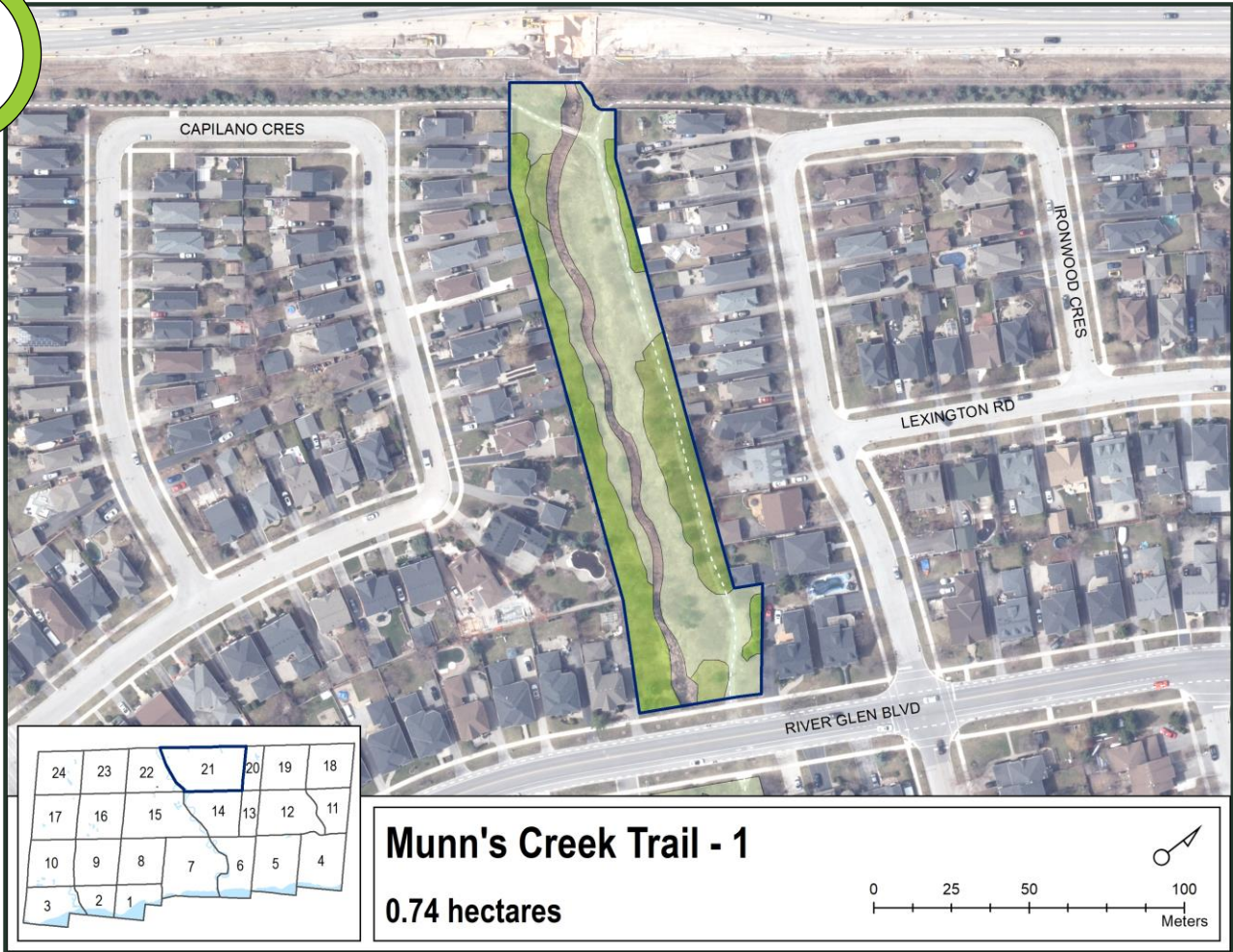


Munn's Creek Trail - 1

Canopy is healthy with no obvious forest health issues



Forest Health Rating Legend

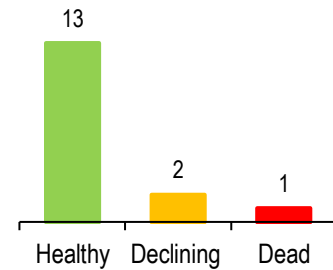
- 1** Canopy is healthy; no obvious forest health issues
- 2** Canopy is moderately healthy; some minor forest health issues but less than 30% tree mortality
- 3** Canopy health is affected by obvious forest health issues; greater than 30% tree mortality

Key findings

- Light defoliation due to spongy moth affecting red and bur oak.
- Light defoliation of willow due to imported willow leaf beetle.
- Isolated pockets of yard waste dumping.

Ash mortality update

Emerald Ash Borer (EAB) has significantly affected the health of ash trees in Oakville. A total of **16** ash trees were surveyed in this woodland to assess the impact of EAB to date. The graph represents each tree's individual health status.



Invasive plant presence

moderate buckthorn	moderate garlic mustard	moderate phragmites	moderate purple loosestrife	low honeysuckle	low periwinkle
-----------------------	----------------------------	------------------------	--------------------------------	--------------------	-------------------

Harman Gate Park

Canopy is healthy with no obvious forest health issues

1



Harman Gate Park

0.37 hectares

Forest Health Rating Legend

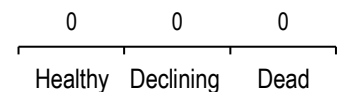
- 1** Canopy is healthy; no obvious forest health issues
- 2** Canopy is moderately healthy; some minor forest health issues but less than 30% tree mortality
- 3** Canopy health is affected by obvious forest health issues; greater than 30% tree mortality

Key findings

- Light defoliation due to spongy moth affecting bur oak.
- Storm damage, low level off-trail trampling, and some encroachment.

Ash mortality update

Emerald Ash Borer (EAB) has significantly affected the health of ash trees in Oakville. A total of **0** ash trees were surveyed in this woodland to assess the impact of EAB to date. The graph represents each tree's individual health status.



Invasive plant presence

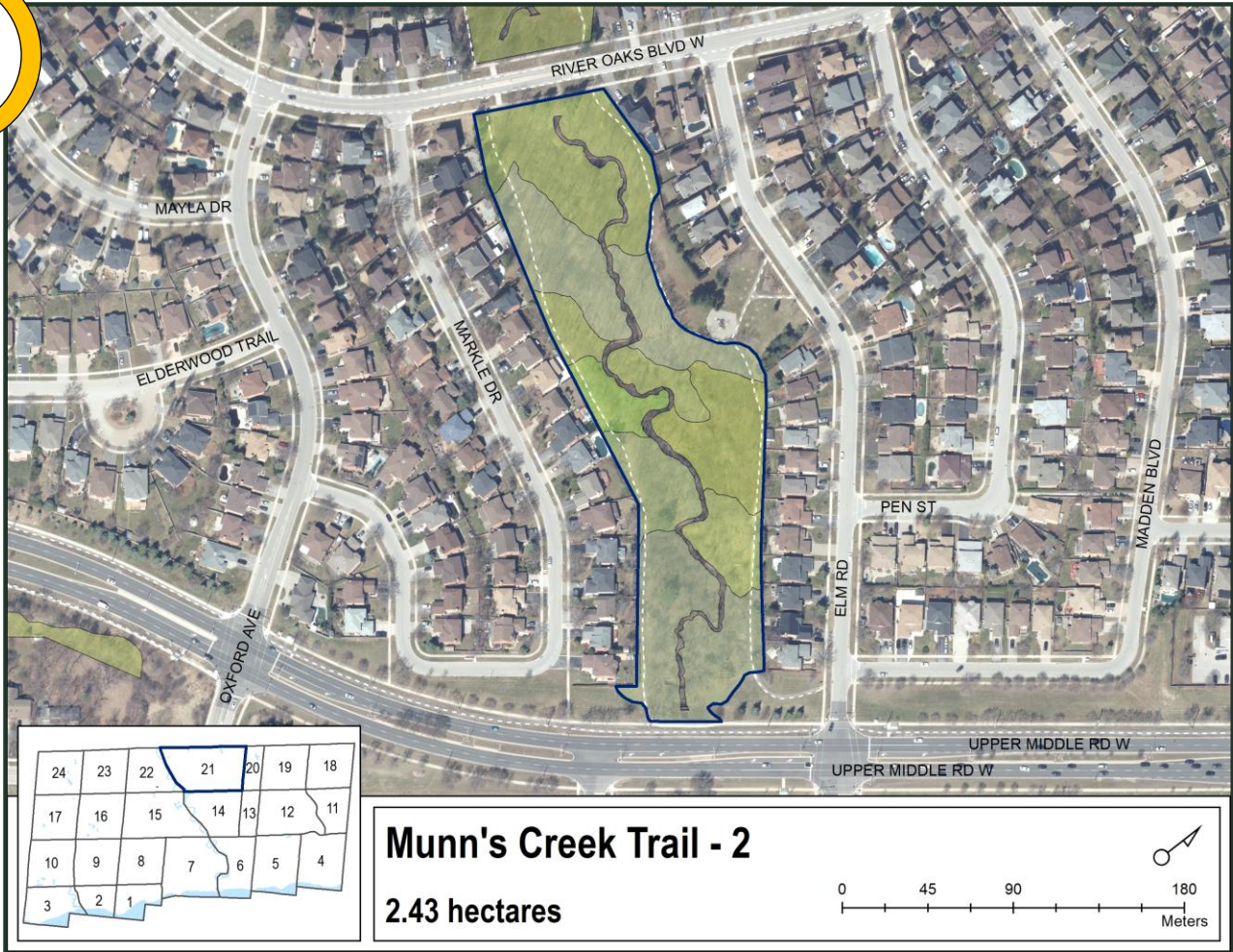
moderate buckthorn	moderate English ivy	moderate garlic mustard	low honeysuckle
---------------------------	-----------------------------	--------------------------------	------------------------

Other species:
 Oriental
 bittersweet (low)

Munn's Creek Trail - 2

Canopy is moderately healthy; some minor issues but less than 30% tree mortality

2



Forest Health Rating Legend

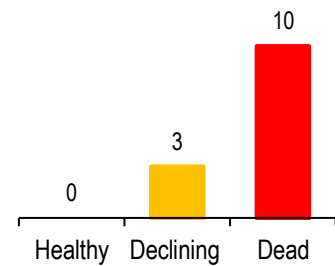
- 1** Canopy is healthy; no obvious forest health issues
- 2** Canopy is moderately healthy; some minor forest health issues but less than 30% tree mortality
- 3** Canopy health is affected by obvious forest health issues; greater than 30% tree mortality

Key findings

- Light defoliation due to spongy moth affecting a variety of hardwood species.
- Isolated pocket of yard waste dumping and low level off-trail trampling.

Ash mortality update

Emerald Ash Borer (EAB) has significantly affected the health of ash trees in Oakville. A total of **13** ash trees were surveyed in this woodland to assess the impact of EAB to date. The graph represents each tree's individual health status.



Invasive plant presence

high	moderate	moderate	low	low	low
buckthorn	garlic mustard	honeysuckle	English ivy	periwinkle	phragmites

Shannon Creek Trail South - 2

Canopy is healthy with no obvious forest health issues

1



Forest Health Rating Legend

- 1** Canopy is healthy; no obvious forest health issues
- 2** Canopy is moderately healthy; some minor forest health issues but less than 30% tree mortality
- 3** Canopy health is affected by obvious forest health issues; greater than 30% tree mortality

Key findings

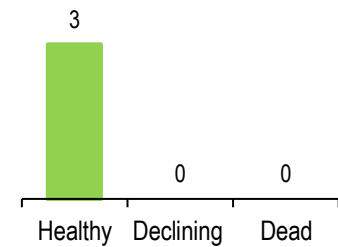
- Light defoliation due to spongy moth affecting a variety of hardwood species.
- Light defoliation of willow due to imported willow leaf beetle.
- Anthracnose causing light damage to sugar maple and bur oak.
- Blowdown, isolated pocket of yard waste dumping and moderate level off-trail trampling.

Invasive plant presence

moderate	moderate	moderate	low	low	low
buckthorn	garlic mustard	honeysuckle	English ivy	euonymus	periwinkle

Ash mortality update

Emerald Ash Borer (EAB) has significantly affected the health of ash trees in Oakville. A total of 3 ash trees were surveyed in this woodland to assess the impact of EAB to date. The graph represents each tree's individual health status.



Shannon Creek Trail South - 1

Canopy is healthy with no obvious forest health issues

1



Forest Health Rating Legend

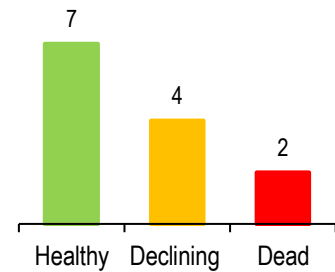
- 1** Canopy is healthy; no obvious forest health issues
- 2** Canopy is moderately healthy; some minor forest health issues but less than 30% tree mortality
- 3** Canopy health is affected by obvious forest health issues; greater than 30% tree mortality

Key findings

- Light defoliation due to spongy moth affecting a variety of hardwood species.
- Light defoliation of willow due to imported willow leaf beetle.
- Anthracnose causing light damage to red oak.

Ash mortality update

Emerald Ash Borer (EAB) has significantly affected the health of ash trees in Oakville. A total of **13** ash trees were surveyed in this woodland to assess the impact of EAB to date. The graph represents each tree's individual health status.



Invasive plant presence

 moderate <p>buckthorn</p>	 moderate <p>garlic mustard</p>	 moderate <p>periwinkle</p>	 low <p>honeysuckle</p>
---	--	--	--------------------------------------

Shannon Creek Trail South - 1

2

Canopy is moderately healthy; some minor issues but less than 30% tree mortality



Forest Health Rating Legend

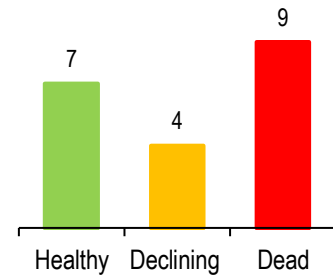
- 1** Canopy is healthy; no obvious forest health issues
- 2** Canopy is moderately healthy; some minor forest health issues but less than 30% tree mortality
- 3** Canopy health is affected by obvious forest health issues; greater than 30% tree mortality

Key findings

- Light defoliation due to spongy moth affecting oak, elm, and poplar.
- Light defoliation of willow due to imported willow leaf beetle.
- Anthracnose causing light damage to bur oak and silver maple.
- Storm damage and low level off-trail trampling.

Ash mortality update

Emerald Ash Borer (EAB) has significantly affected the health of ash trees in Oakville. A total of **20** ash trees were surveyed in this woodland to assess the impact of EAB to date. The graph represents each tree's individual health status.



Invasive plant presence

high	moderate	moderate	low
garlic mustard	buckthorn	periwinkle	honeysuckle

Shannon Creek Trail South - 1

Canopy is healthy with no obvious forest health issues

1



Forest Health Rating Legend

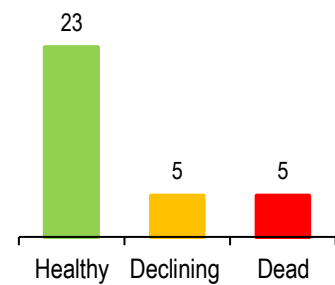
- 1** Canopy is healthy; no obvious forest health issues
- 2** Canopy is moderately healthy; some minor forest health issues but less than 30% tree mortality
- 3** Canopy health is affected by obvious forest health issues; greater than 30% tree mortality

Key findings

- Light defoliation due to spongy moth affecting oak, basswood, maple, and tamarack.
- Light defoliation of willow due to imported willow leaf beetle.
- Anthracnose causing light damage to red and silver maple.
- Low level off-trail trampling.

Ash mortality update

Emerald Ash Borer (EAB) has significantly affected the health of ash trees in Oakville. A total of **33** ash trees were surveyed in this woodland to assess the impact of EAB to date. The graph represents each tree's individual health status.



Invasive plant presence

moderate	moderate	low	low	low
buckthorn	garlic mustard	honeysuckle	periwinkle	purple loosestrife

Wildwoods Park

Canopy is healthy with no obvious forest health issues

1



Wildwoods Park

22.29 hectares

Forest Health Rating Legend

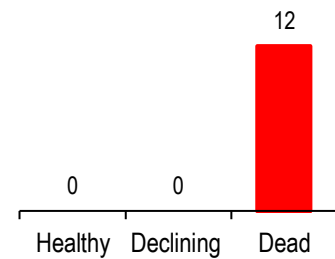
- 1** Canopy is healthy; no obvious forest health issues
- 2** Canopy is moderately healthy; some minor forest health issues but less than 30% tree mortality
- 3** Canopy health is affected by obvious forest health issues; greater than 30% tree mortality

Key findings

- Light defoliation due to spongy moth affecting oak, basswood, beech, birch, cherry, hickory, and maple.
- Low level of off-trail trampling.
- Blowdown.
- Large tent encampment with debris dumping.

Ash mortality update

Emerald Ash Borer (EAB) has significantly affected the health of ash trees in Oakville. A total of **12** ash trees were surveyed in this woodland to assess the impact of EAB to date. The graph represents each tree's individual health status.



Invasive plant presence

moderate 	moderate 	moderate 	low 	low 	low
buckthorn	garlic mustard	giant hogweed	dog-strangling vine	honeysuckle	periwinkle

Other species:
purple
loosestrife (low)

Sixteen Mile Creek Trail North U.M.R.

Canopy is healthy with no obvious forest health issues

1



Forest Health Rating Legend

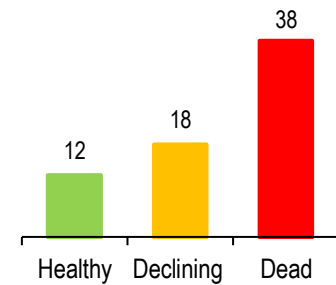
- 1** Canopy is healthy; no obvious forest health issues
- 2** Canopy is moderately healthy; some minor forest health issues but less than 30% tree mortality
- 3** Canopy health is affected by obvious forest health issues; greater than 30% tree mortality

Key findings

- Light defoliation due to spongy moth affecting a variety of hardwood species.
- Light defoliation of willow due to imported willow leaf beetle.
- Light defoliation of Siberian elm due to elm leaf beetle.
- Anthracnose causing light damage to bur oak.
- Butternut canker causing light damage to hybrid butternut.
- Scattered pockets of white pine decline.
- Storm damage, isolated pockets of yard waste dumping, and low level off-trail trampling.

Ash mortality update

Emerald Ash Borer (EAB) has significantly affected the health of ash trees in Oakville. A total of **68** ash trees were surveyed in this woodland to assess the impact of EAB to date. The graph represents each tree's individual health status.



Invasive plant presence

moderate buckthorn	moderate garlic mustard	moderate honeysuckle	moderate phragmites	moderate purple loosestrife	low bindweed
-----------------------	----------------------------	-------------------------	------------------------	--------------------------------	-----------------

Other species:
 coltsfoot (low)
 dog-strangling vine (low)
 English ivy (low)
 euonymus (low)
 giant hogweed (low)
 etc.

Birchtree Trail

Canopy is healthy with no obvious forest health issues

1



Forest Health Rating Legend

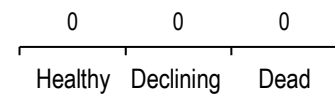
- 1** Canopy is healthy; no obvious forest health issues
- 2** Canopy is moderately healthy; some minor forest health issues but less than 30% tree mortality
- 3** Canopy health is affected by obvious forest health issues; greater than 30% tree mortality

Key findings

- Light defoliation due to spongy moth affecting oak and hawthorn.
- Anthracnose causing light damage to bur oak.
- Isolated pocket of yard waste dumping and some encroachment.

Ash mortality update

Emerald Ash Borer (EAB) has significantly affected the health of ash trees in Oakville. A total of **0** ash trees were surveyed in this woodland to assess the impact of EAB to date. The graph represents each tree's individual health status.



Invasive plant presence

high **moderate**

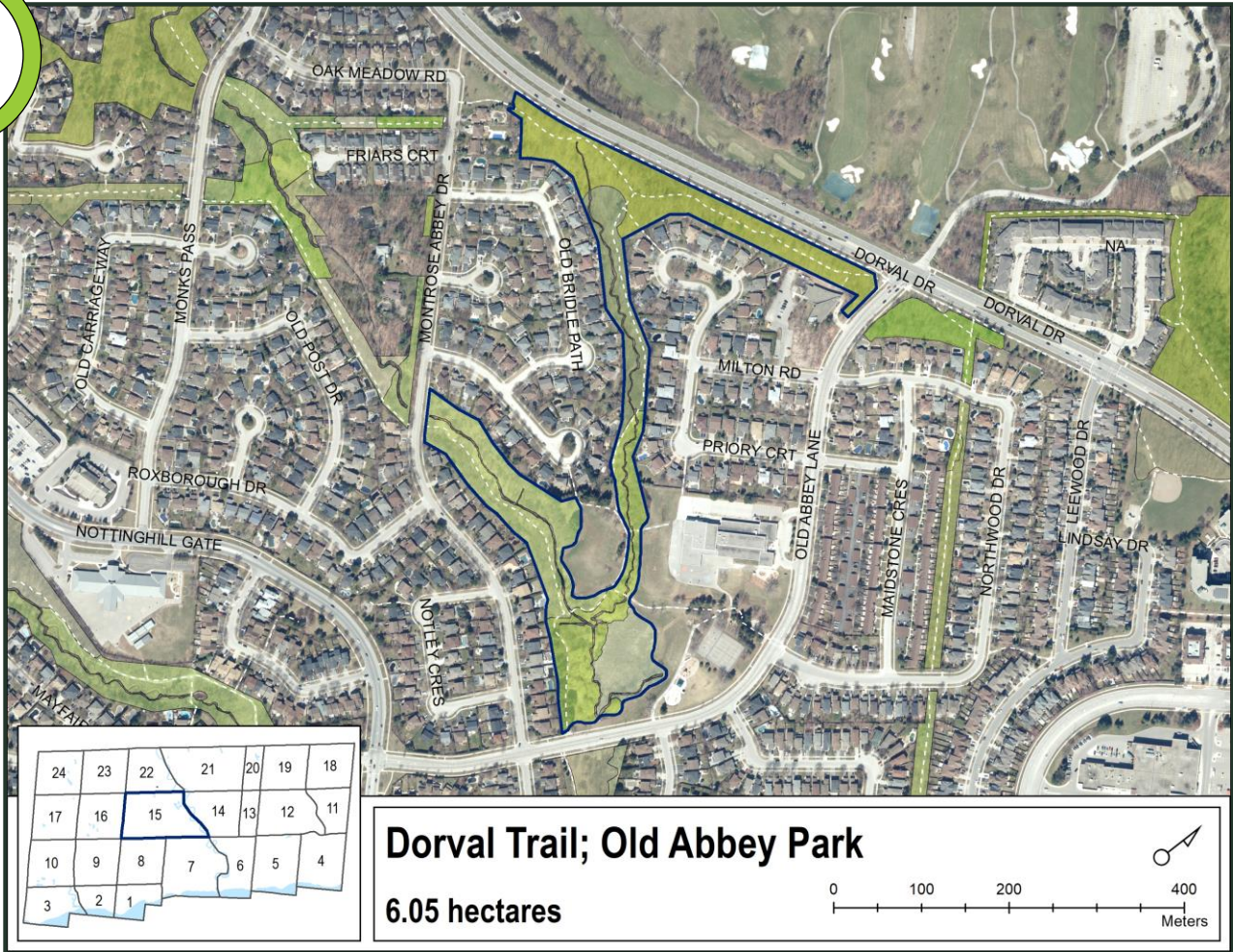
buckthorn

garlic mustard

Dorval Trail

Canopy is healthy with no obvious forest health issues

1



Forest Health Rating Legend

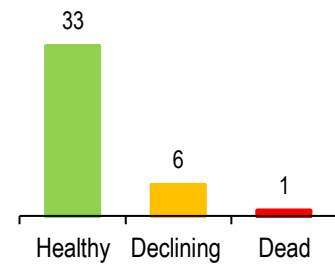
- 1** Canopy is healthy; no obvious forest health issues
- 2** Canopy is moderately healthy; some minor forest health issues but less than 30% tree mortality
- 3** Canopy health is affected by obvious forest health issues; greater than 30% tree mortality

Key findings


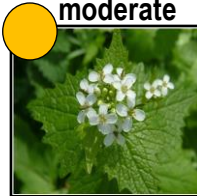
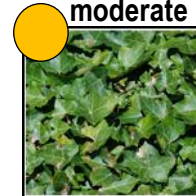
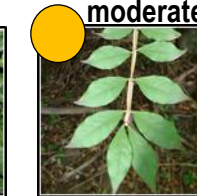
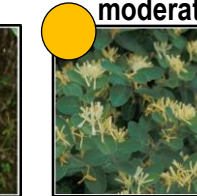
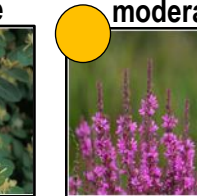
- Light defoliation due to spongy moth affecting oak, basswood, beech, and hickory.
- Light defoliation of willow due to imported willow leaf beetle.
- Tar spot causing light damage to Norway maple.
- Isolated pocket of yard waste dumping and low level of off-trail trampling.
- Blowdown, storm damage, and harvesting.

Ash mortality update

Emerald Ash Borer (EAB) has significantly affected the health of ash trees in Oakville. A total of **40** ash trees were surveyed in this woodland to assess the impact of EAB to date. The graph represents each tree's individual health status.



Invasive plant presence

 moderate	 moderate	 moderate	 moderate	 moderate	 moderate
buckthorn	garlic mustard	English ivy	euonymus	honeysuckle	purple loosestrife

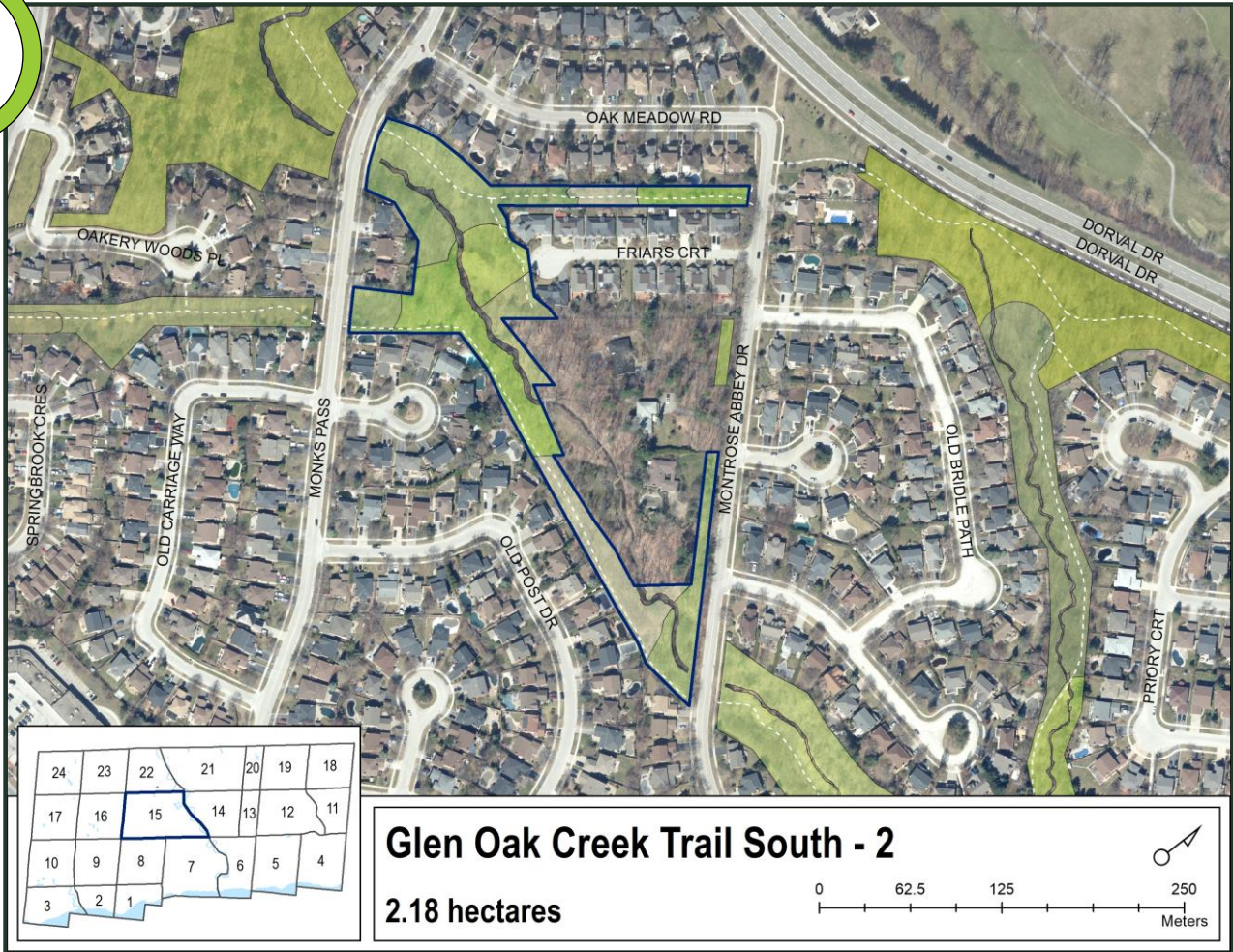
Other species:
bindweed (low)
coltsfoot (low)
phragmites (low)



Glen Oak Creek Trail South - 2

Canopy is healthy with no obvious forest health issues

1



Forest Health Rating Legend

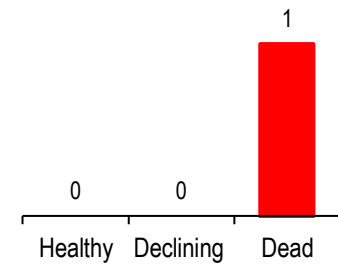
- 1** Canopy is healthy; no obvious forest health issues
- 2** Canopy is moderately healthy; some minor forest health issues but less than 30% tree mortality
- 3** Canopy health is affected by obvious forest health issues; greater than 30% tree mortality

Key findings

- Light defoliation due to spongy moth affecting oak, basswood, beech, birch, and hickory. Light defoliation due to imported willow leaf beetle affecting willow.
- Isolated pockets of yard waste dumping and moderate off-trail trampling.
- Storm damage.

Ash mortality update

Emerald Ash Borer (EAB) has significantly affected the health of ash trees in Oakville. A total of 1 ash tree was surveyed in this woodland to assess the impact of EAB to date. The graph represents each tree's individual health status.



Invasive plant presence

moderate 	moderate 	moderate 	moderate 	moderate 	low
buckthorn	English ivy	garlic mustard	honeysuckle	periwinkle	euonymus

Glen Abbey Woods

Canopy is healthy with no obvious forest health issues

1



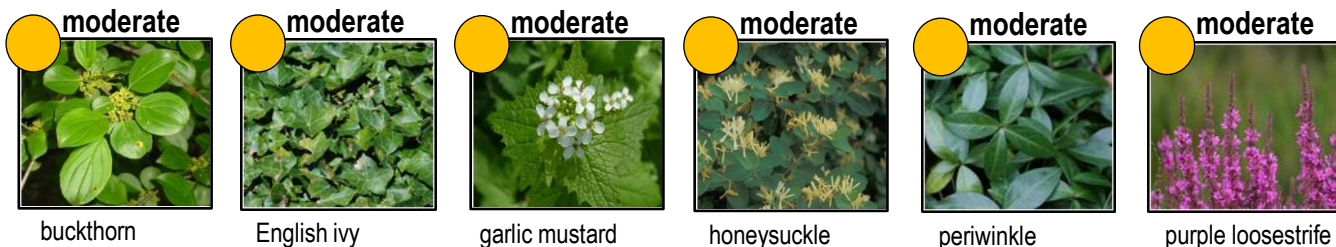
Forest Health Rating Legend

- 1** Canopy is healthy; no obvious forest health issues
- 2** Canopy is moderately healthy; some minor forest health issues but less than 30% tree mortality
- 3** Canopy health is affected by obvious forest health issues; greater than 30% tree mortality

Key findings

- Light defoliation due to spongy moth affecting oak, basswood, beech, and hickory. Light defoliation of willow due to imported willow leaf beetle.
- Anthracnose causing light damage to oak and maple. Tar spot causing light damage to Norway maple.
- Beech leaf disease present on American beech.
- Scattered pockets of yard waste dumping, moderate off-trail trampling, and some encroachment.
- Storm damage and harvesting.
- One pocket of white pine decline.

Invasive plant presence

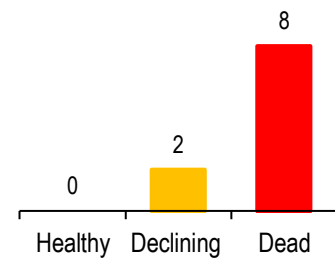


Other species:
coltsfoot (low)
euonymus (low)
goutweed (low)
Oriental
bittersweet (low)
phragmites (low)
wild grape
(low)



Ash mortality update

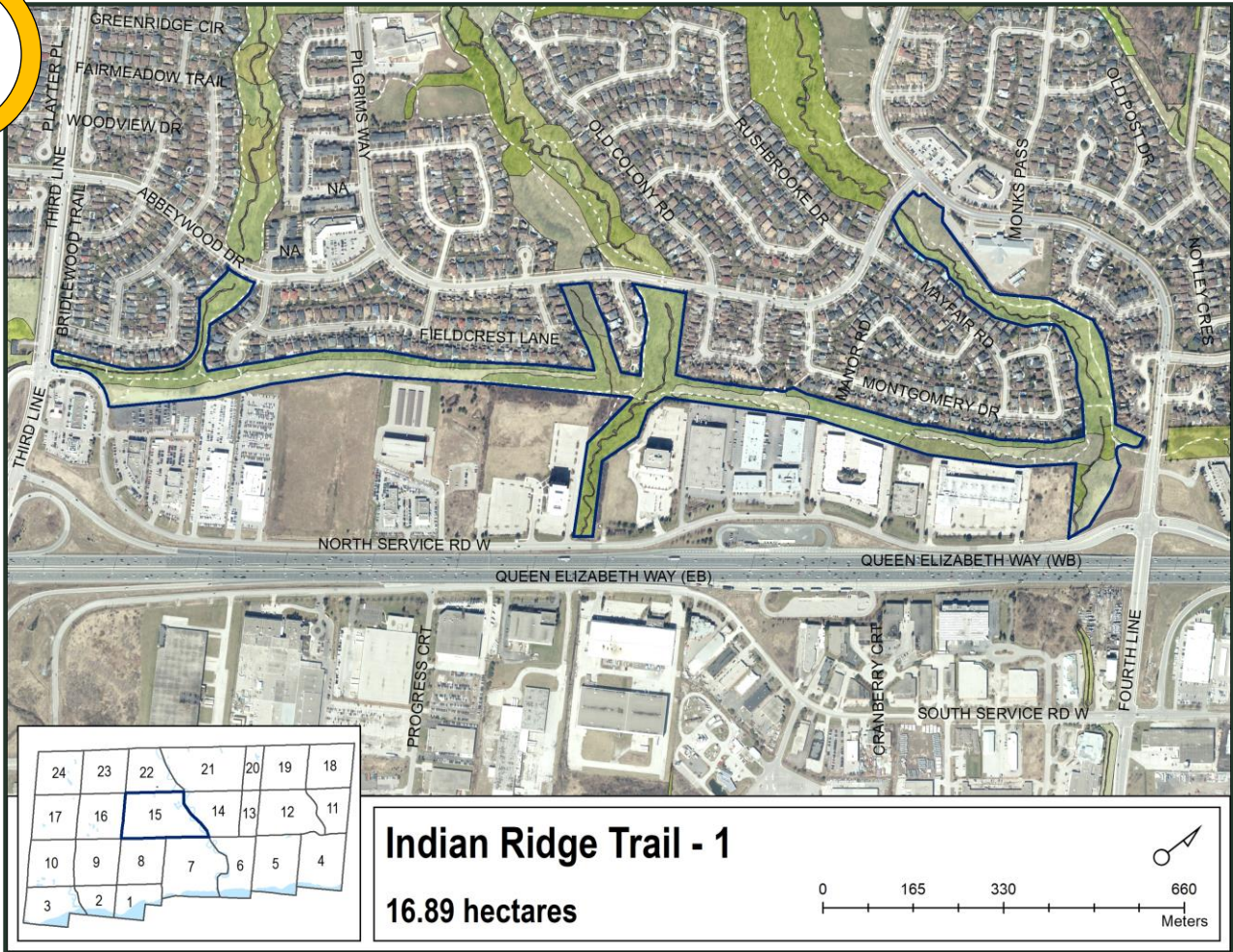
Emerald Ash Borer (EAB) has significantly affected the health of ash trees in Oakville. A total of **10** ash trees were surveyed in this woodland to assess the impact of EAB to date. The graph represents each tree's individual health status.



Indian Ridge Trail - 1

Canopy is moderately healthy; some minor issues but less than 30% tree mortality

2



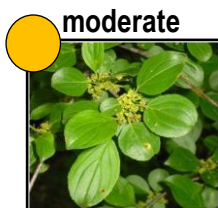
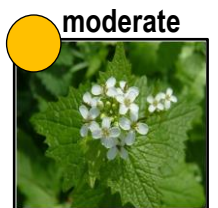
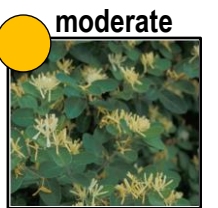
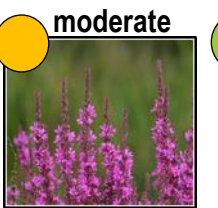


Forest Health Rating Legend

- 1** Canopy is healthy; no obvious forest health issues
- 2** Canopy is moderately healthy; some minor forest health issues but less than 30% tree mortality
- 3** Canopy health is affected by obvious forest health issues; greater than 30% tree mortality

Key findings

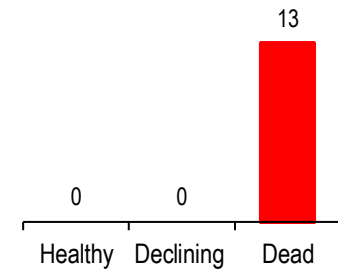
- Light defoliation due to spongy moth affecting a variety of hardwood species.
- Light defoliation of willow due to imported willow leaf beetle.
- Tar spot causing light damage to Norway maple.
- Oak leaf blister disease causing light damage to red oak.
- Storm damage, scattered pockets of yard waste dumping, and low level off-trail trampling.

Invasive plant presence

 moderate	 moderate	 moderate	 moderate	 low	 low
buckthorn	garlic mustard	honeysuckle	purple loosestrife	bindweed	black alder

Ash mortality update

Emerald Ash Borer (EAB) has significantly affected the health of ash trees in Oakville. A total of **13** ash trees were surveyed in this woodland to assess the impact of EAB to date. The graph represents each tree's individual health status.



Other species:
 coltsfoot (low)
 English ivy (low)
 euonymus (low)
 periwinkle (low)
 wild grape (low)

Glen Abbey Trail - 2

Canopy is healthy with no obvious forest health issues

1



Forest Health Rating Legend

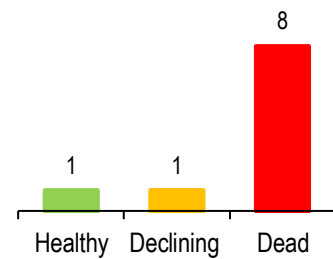
- 1** Canopy is healthy; no obvious forest health issues
- 2** Canopy is moderately healthy; some minor forest health issues but less than 30% tree mortality
- 3** Canopy health is affected by obvious forest health issues; greater than 30% tree mortality

Key findings

- Light defoliation due to spongy moth affecting a variety of hardwood species.
- Light defoliation of willow due to imported willow leaf beetle.
- Anthracnose causing light damage to oak and maple.
- Blowdown, harvesting, and storm damage.
- Scattered pockets of yard waste dumping and moderate off-trail trampling.

Ash mortality update

Emerald Ash Borer (EAB) has significantly affected the health of ash trees in Oakville. A total of **10** ash trees were surveyed in this woodland to assess the impact of EAB to date. The graph represents each tree's individual health status.



Invasive plant presence

moderate 	moderate 	moderate 	moderate 	low 	low
buckthorn	garlic mustard	honeysuckle	purple loosestrife	bindweed	black alder

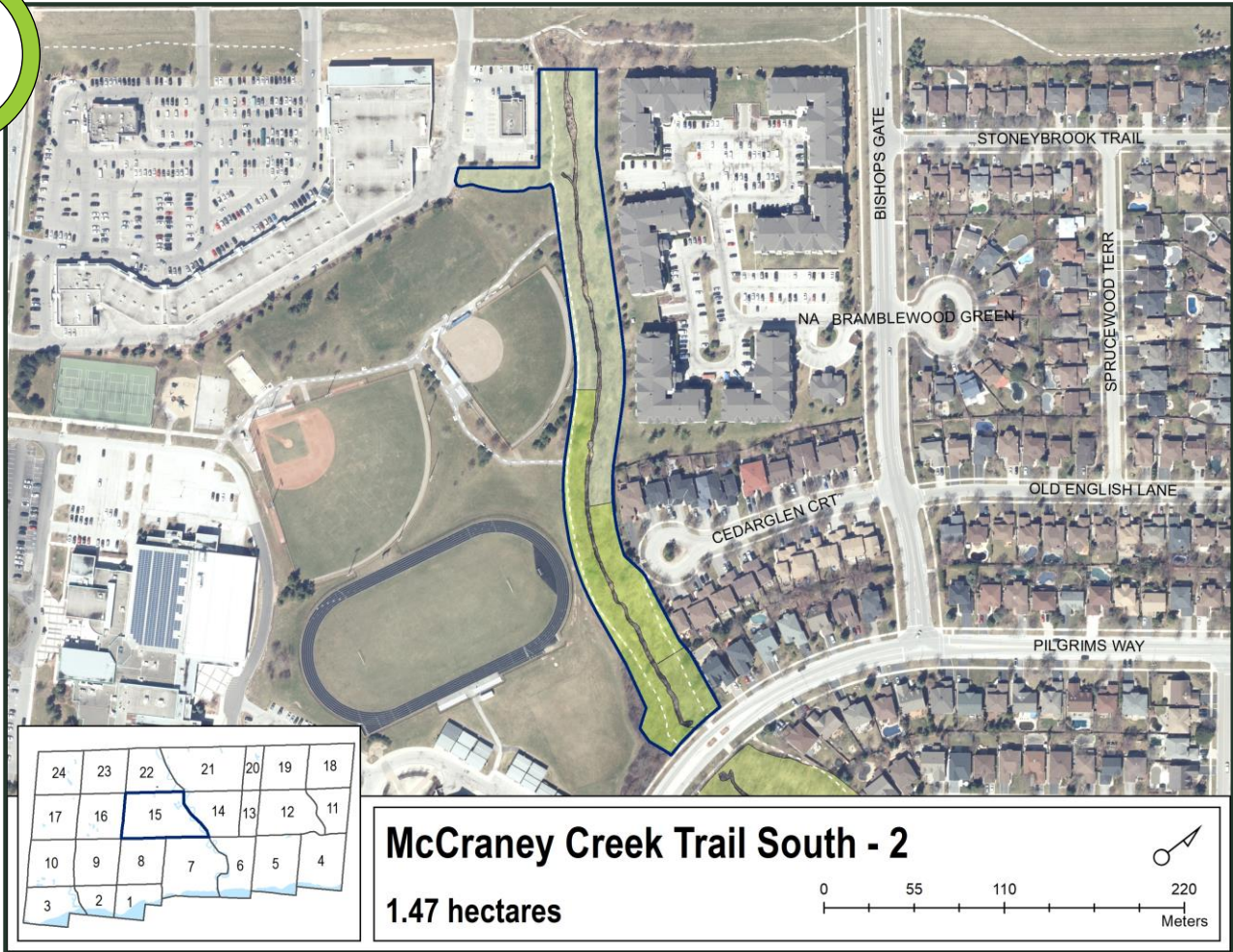
Other species:
 coltsfoot (low)
 English ivy (low)
 euonymus (low)
 periwinkle (low)
 wild grape (low)



McCraney Creek Trail South - 2

Canopy is healthy with no obvious forest health issues

1



Forest Health Rating Legend

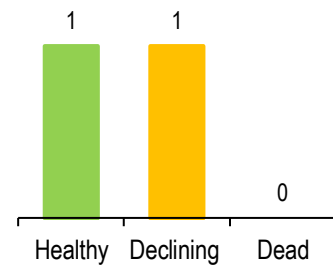
- 1** Canopy is healthy; no obvious forest health issues
- 2** Canopy is moderately healthy; some minor forest health issues but less than 30% tree mortality
- 3** Canopy health is affected by obvious forest health issues; greater than 30% tree mortality

Key findings

- Light defoliation due to spongy moth affecting oak and basswood.
- Light defoliation of willow due to imported willow leaf beetle.
- Blowdown and storm damage.
- Isolated pockets of yard waste dumping and low level off-trail trampling.

Ash mortality update

Emerald Ash Borer (EAB) has significantly affected the health of ash trees in Oakville. A total of 2 ash trees were surveyed in this woodland to assess the impact of EAB to date. The graph represents each tree's individual health status.



Invasive plant presence

moderate 	moderate 	moderate 	moderate 	low
buckthorn	garlic mustard	honeysuckle	purple loosestrife	periwinkle

Other species:
tree of heaven
(low)

Taplow Creek Trail

Canopy is moderately healthy; some minor issues but less than 30% tree mortality

2



Taplow Creek Trail

1.28 hectares

Forest Health Rating Legend

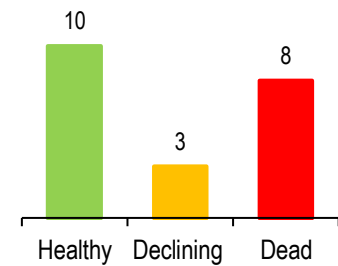
- 1** Canopy is healthy; no obvious forest health issues
- 2** Canopy is moderately healthy; some minor forest health issues but less than 30% tree mortality
- 3** Canopy health is affected by obvious forest health issues; greater than 30% tree mortality

Key findings

- Light defoliation due to spongy moth affecting oak.
- Leaf miner causing light damage to elm.
- Anthracnose causing light damage to silver maple.
- Low level off-trail trampling and some encroachment.
- Vandalism to sumacs.

Ash mortality update

Emerald Ash Borer (EAB) has significantly affected the health of ash trees in Oakville. A total of **21** ash trees were surveyed in this woodland to assess the impact of EAB to date. The graph represents each tree's individual health status.



Invasive plant presence

moderate 	moderate 	moderate 	low 	low 	low
black alder	buckthorn	garlic mustard	bindweed	honeysuckle	periwinkle

Other species:
phragmites (low)
purple loosestrife (low)

Sheridan Hills Park

Canopy is healthy with no obvious forest health issues

1



Forest Health Rating Legend

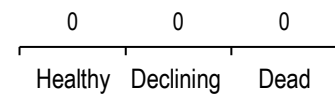
- 1** Canopy is healthy; no obvious forest health issues
- 2** Canopy is moderately healthy; some minor forest health issues but less than 30% tree mortality
- 3** Canopy health is affected by obvious forest health issues; greater than 30% tree mortality

Key findings

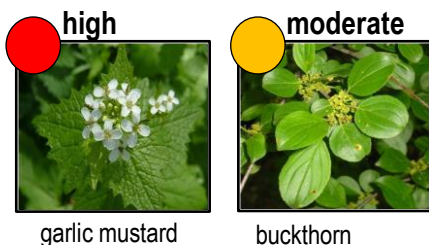
- Light defoliation due to spongy moth affecting oaks and Norway maple.
- Moderate level of off-trail trampling.

Ash mortality update

Emerald Ash Borer (EAB) has significantly affected the health of ash trees in Oakville. A total of **0** ash trees were surveyed in this woodland to assess the impact of EAB to date. The graph represents each tree's individual health status.



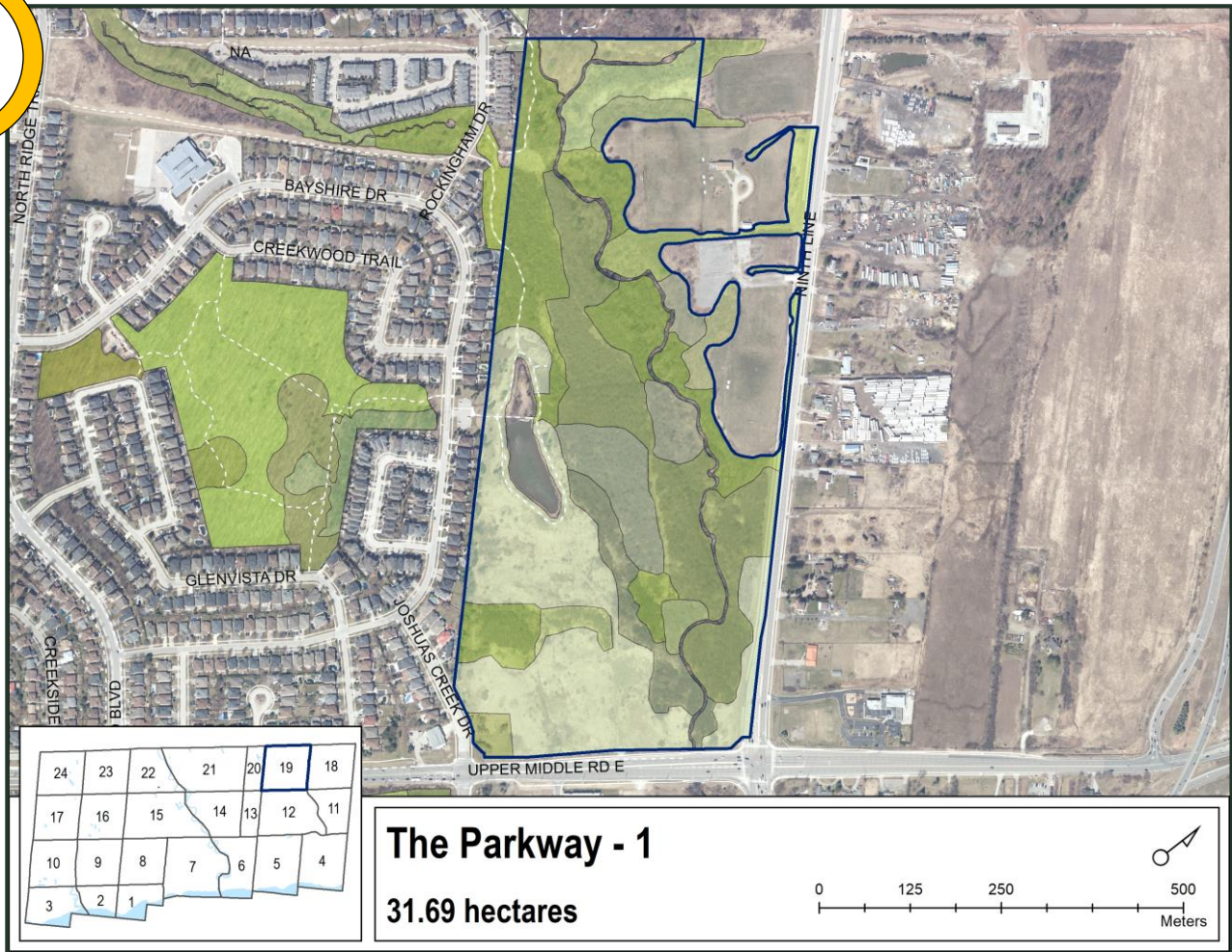
Invasive plant presence



The Parkway - 1

Canopy is moderately healthy; some minor issues but less than 30% tree mortality

2



Forest Health Rating Legend

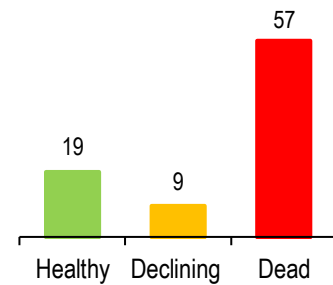
- 1** Canopy is healthy; no obvious forest health issues
- 2** Canopy is moderately healthy; some minor forest health issues but less than 30% tree mortality
- 3** Canopy health is affected by obvious forest health issues; greater than 30% tree mortality

Key findings


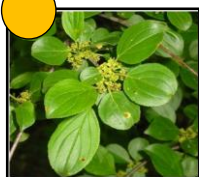

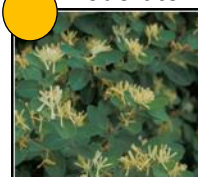

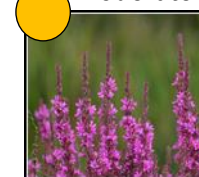
- Light defoliation due to spongy moth affecting a variety of hardwood species.
- Light defoliation of willow due to imported willow leaf beetle.
- Light defoliation of elm due to elm leaf beetle.
- Some elm mortality.
- Isolated pockets of yard waste dumping and low level off-trail trampling.

Ash mortality update

Emerald Ash Borer (EAB) has significantly affected the health of ash trees in Oakville. A total of **85** ash trees were surveyed in this woodland to assess the impact of EAB to date. The graph represents each tree's individual health status.



Invasive plant presence

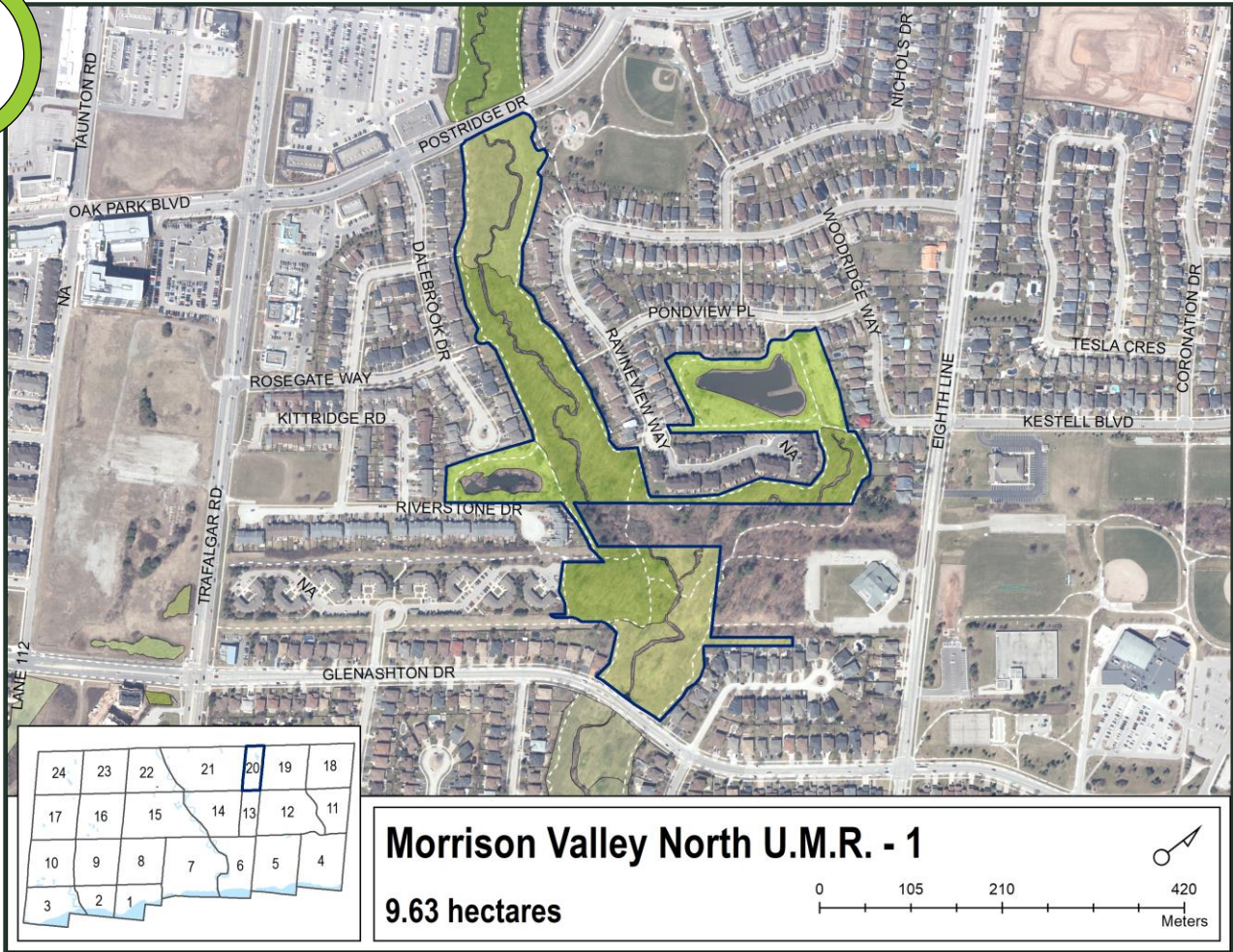
 moderate	 moderate	 moderate	 moderate	 moderate	 moderate
bindweed	buckthorn	garlic mustard	honeysuckle	phragmites	purple loosestrife

Other species:
 coltsfoot (low)
 dog-strangling vine (low)
 Japanese knotweed (low)
 Russian olive (low)
 wild grape (low)

Morrison Valley North U.M.R. - 1

Canopy is healthy with no obvious forest health issues

1



Forest Health Rating Legend

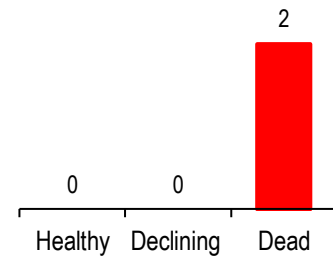
- 1** Canopy is healthy; no obvious forest health issues
- 2** Canopy is moderately healthy; some minor forest health issues but less than 30% tree mortality
- 3** Canopy health is affected by obvious forest health issues; greater than 30% tree mortality

Key findings

- Light defoliation due to spongy moth affecting a variety of hardwood species.
- Light defoliation of willow due to imported willow leaf beetle.
- Scattered pockets of yard waste dumping and low level off-trail trampling.
- Isolated pockets of white pine decline.

Ash mortality update

Emerald Ash Borer (EAB) has significantly affected the health of ash trees in Oakville. A total of **2** ash trees were surveyed in this woodland to assess the impact of EAB to date. The graph represents each tree's individual health status.



Invasive plant presence

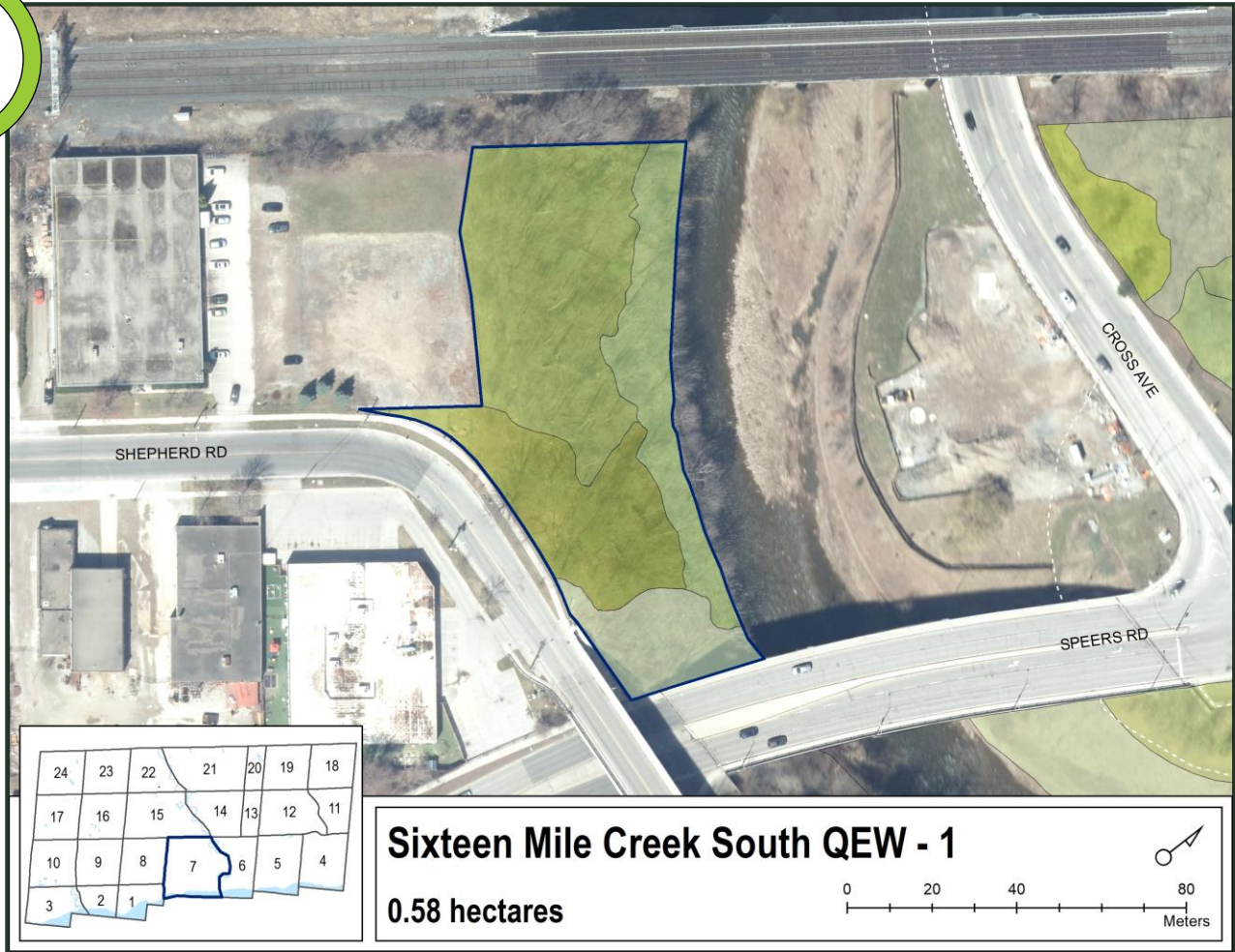
moderate buckthorn	moderate garlic mustard	moderate honeysuckle	low bindweed	low black alder	low coltsfoot
-----------------------	----------------------------	-------------------------	-----------------	--------------------	------------------

Other species:
 English ivy (low)
 euonymus (low)
 goutweed (low)
 phragmites (low)
 periwinkle (low)
 etc.

Sixteen Mile Creek South QEW – 1

Canopy is healthy with no obvious forest health issues

1



Forest Health Rating Legend

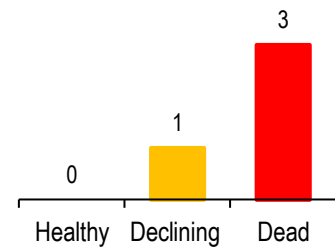
- 1** Canopy is healthy; no obvious forest health issues
- 2** Canopy is moderately healthy; some minor forest health issues but less than 30% tree mortality
- 3** Canopy health is affected by obvious forest health issues; greater than 30% tree mortality

Key findings

- Light defoliation due to spongy moth affecting oak, cherry, and basswood.
- Low level of off-trail trampling.

Ash mortality update

Emerald Ash Borer (EAB) has significantly affected the health of ash trees in Oakville. A total of 4 ash trees were surveyed in this woodland to assess the impact of EAB to date. The graph represents each tree's individual health status.



Invasive plant presence

moderate <p>buckthorn</p>	moderate <p>garlic mustard</p>	moderate <p>honeysuckle</p>
------------------------------	-----------------------------------	--------------------------------

Sheridan Hills Park

Canopy is healthy with no obvious forest health issues

1



Forest Health Rating Legend

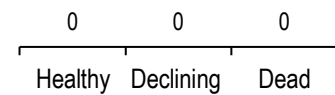
- 1** Canopy is healthy; no obvious forest health issues
- 2** Canopy is moderately healthy; some minor forest health issues but less than 30% tree mortality
- 3** Canopy health is affected by obvious forest health issues; greater than 30% tree mortality

Key findings

- Light defoliation due to spongy moth affecting bur oak and Norway maple.
- Moderate defoliation due to elm leaf beetle affecting Siberian elm.
- Anthracnose causing light damage to maples.
- Low level of off-trail trampling.

Ash mortality update

Emerald Ash Borer (EAB) has significantly affected the health of ash trees in Oakville. A total of **0** ash trees were surveyed in this woodland to assess the impact of EAB to date. The graph represents each tree's individual health status.



Invasive plant presence

high	moderate	moderate	low
garlic mustard	buckthorn	euonymus	honeysuckle

Sixteen Mile Creek South QEW – 1

Canopy is moderately healthy; some minor issues but less than 30% tree mortality

2



Forest Health Rating Legend

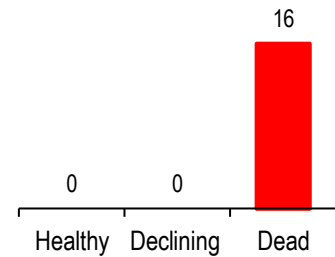
- 1** Canopy is healthy; no obvious forest health issues
- 2** Canopy is moderately healthy; some minor forest health issues but less than 30% tree mortality
- 3** Canopy health is affected by obvious forest health issues; greater than 30% tree mortality

Key findings

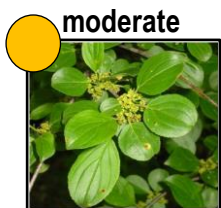
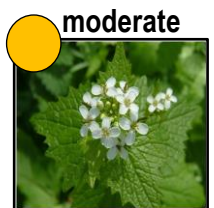
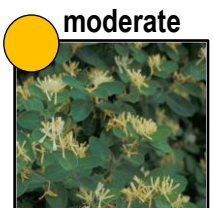
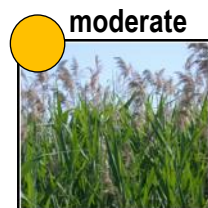
- Light defoliation due to spongy moth affecting red oak and basswood.
- Storm damage.
- Decline of maple, basswood, and oak.

Ash mortality update

Emerald Ash Borer (EAB) has significantly affected the health of ash trees in Oakville. A total of **16** ash trees were surveyed in this woodland to assess the impact of EAB to date. The graph represents each tree's individual health status.



Invasive plant presence

 moderate	 moderate	 moderate	 moderate
buckthorn	garlic mustard	honeysuckle	phragmites

Sixteen Mile Creek South QEW – 1

Canopy is moderately healthy; some minor issues but less than 30% tree mortality

2



Forest Health Rating Legend

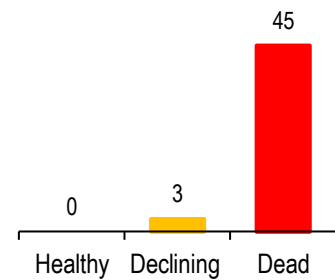
- 1** Canopy is healthy; no obvious forest health issues
- 2** Canopy is moderately healthy; some minor forest health issues but less than 30% tree mortality
- 3** Canopy health is affected by obvious forest health issues; greater than 30% tree mortality

Key findings

- Light defoliation due to spongy moth affecting red oak and basswood.
- Light defoliation of willow due to imported willow leaf beetle.
- Light defoliation of elm due to elm leaf beetle.
- Storm damage, blowdown, and low level off-trail trampling.
- Scattered pockets of yard waste and debris dumping.

Ash mortality update

Emerald Ash Borer (EAB) has significantly affected the health of ash trees in Oakville. A total of **48** ash trees were surveyed in this woodland to assess the impact of EAB to date. The graph represents each tree's individual health status.



Invasive plant presence

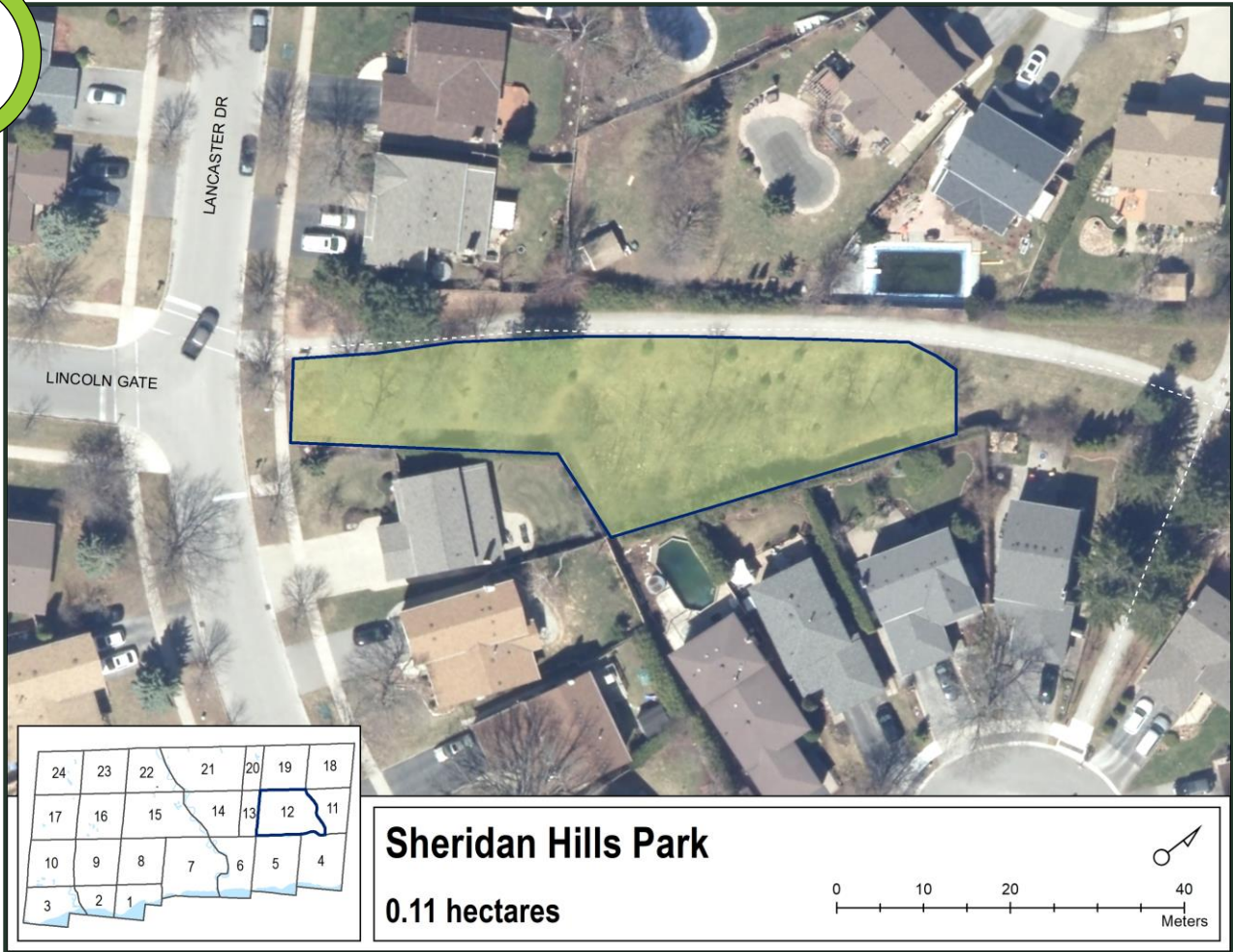
moderate <p>buckthorn</p>	moderate <p>garlic mustard</p>	moderate <p>giant hogweed</p>	moderate <p>honeysuckle</p>	moderate <p>purple loosestrife</p>	low <p>bindweed</p>
------------------------------	-----------------------------------	----------------------------------	--------------------------------	---------------------------------------	------------------------

Other species:
black alder (low)
coltsfoot (low)
phragmites (low)

Sheridan Hills Park

Canopy is healthy with no obvious forest health issues

1



Forest Health Rating Legend

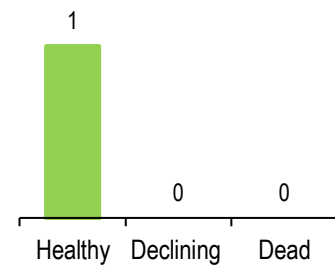
- 1** Canopy is healthy; no obvious forest health issues
- 2** Canopy is moderately healthy; some minor forest health issues but less than 30% tree mortality
- 3** Canopy health is affected by obvious forest health issues; greater than 30% tree mortality

Key findings

- Light defoliation due to spongy moth affecting oak and maple.

Ash mortality update

Emerald Ash Borer (EAB) has significantly affected the health of ash trees in Oakville. A total of 1 ash tree was surveyed in this woodland to assess the impact of EAB to date. The graph represents each tree's individual health status.



Invasive plant presence

moderate <p>buckthorn</p>	moderate <p>garlic mustard</p>	low <p>English ivy</p>	low <p>periwinkle</p>
------------------------------	-----------------------------------	---------------------------	--------------------------

The Parkway - 2

Canopy is healthy with no obvious forest health issues

1



Forest Health Rating Legend

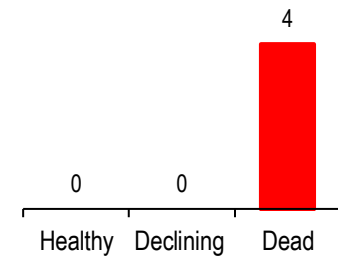
- 1** Canopy is healthy; no obvious forest health issues
- 2** Canopy is moderately healthy; some minor forest health issues but less than 30% tree mortality
- 3** Canopy health is affected by obvious forest health issues; greater than 30% tree mortality

Key findings

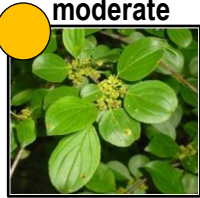
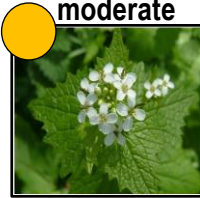
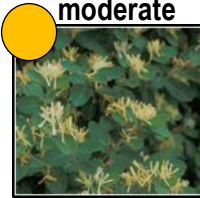
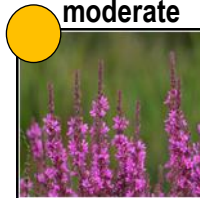
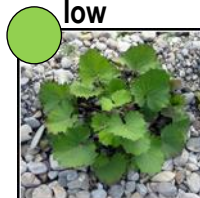
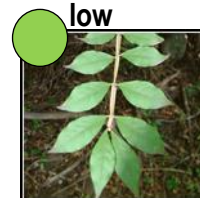
- Light defoliation due to spongy moth affecting oak and apple.
- Light defoliation of willow due to imported willow leaf beetle.
- Low level off-trail trampling.

Ash mortality update

Emerald Ash Borer (EAB) has significantly affected the health of ash trees in Oakville. A total of 4 ash trees were surveyed in this woodland to assess the impact of EAB to date. The graph represents each tree's individual health status.



Invasive plant presence

 moderate	 moderate	 moderate	 moderate	 low	 low
buckthorn	garlic mustard	honeysuckle	purple loosestrife	coltsfoot	euonymus

Other species:
wild grape (low)

Merchants Trail

2

Canopy is moderately healthy; some minor issues but less than 30% tree mortality



Merchants Trail

0.85 hectares

Forest Health Rating Legend

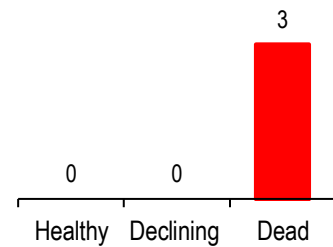
- 1** Canopy is healthy; no obvious forest health issues
- 2** Canopy is moderately healthy; some minor forest health issues but less than 30% tree mortality
- 3** Canopy health is affected by obvious forest health issues; greater than 30% tree mortality

Key findings

- Light defoliation due to spongy moth affecting oaks.
- Light defoliation of willow due to imported willow leaf beetle.
- Anthracnose causing light damage to maples.
- Tar spot causing light damage to Norway maple.
- Blowdown.
- Low level off-trail trampling.

Ash mortality update

Emerald Ash Borer (EAB) has significantly affected the health of ash trees in Oakville. A total of **3** ash trees were surveyed in this woodland to assess the impact of EAB to date. The graph represents each tree's individual health status.



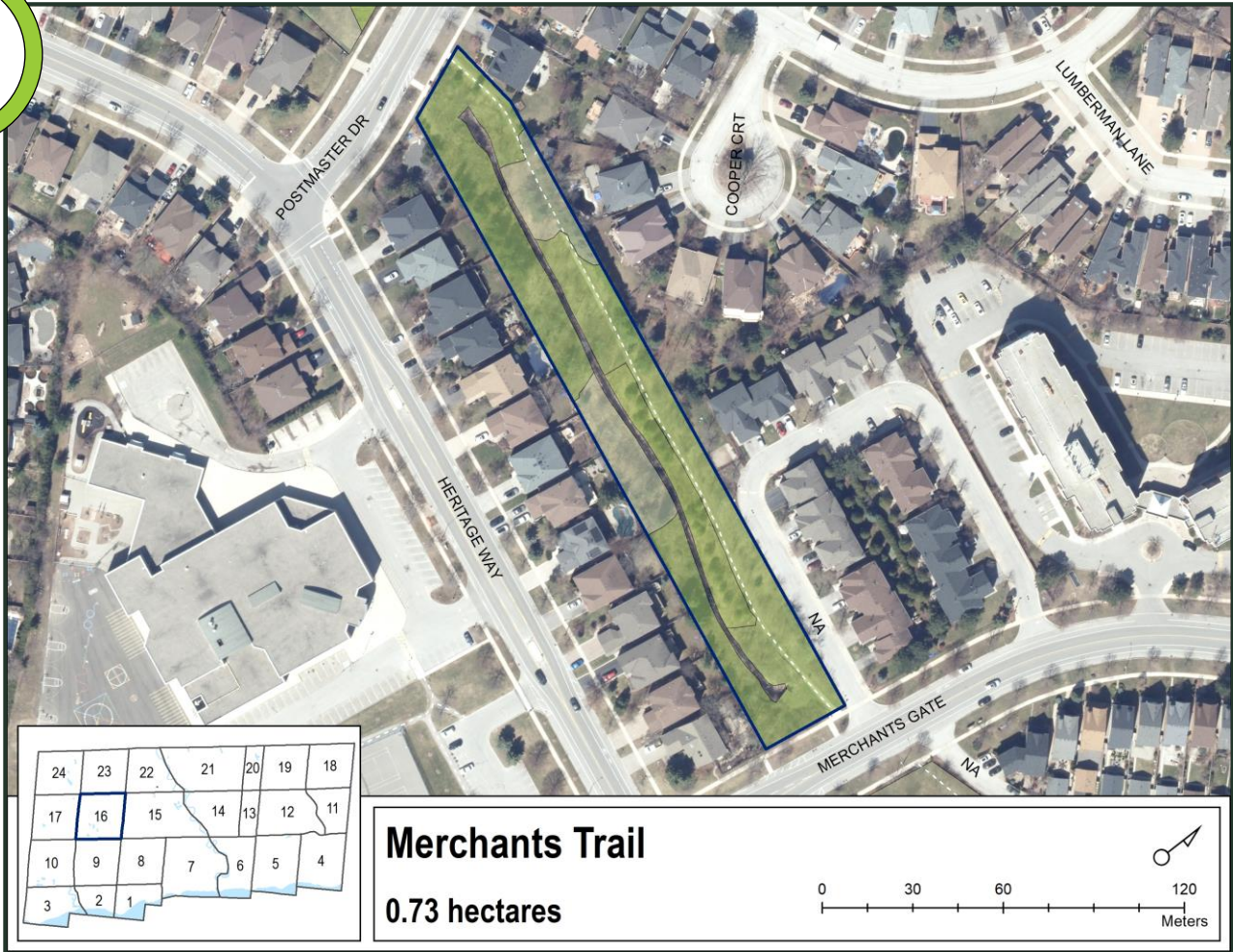
Invasive plant presence

moderate 	moderate 	moderate 	moderate 	low
buckthorn	garlic mustard	honeysuckle	purple loosestrife	English ivy

Merchants Trail

Canopy is healthy with no obvious forest health issues

1



Forest Health Rating Legend

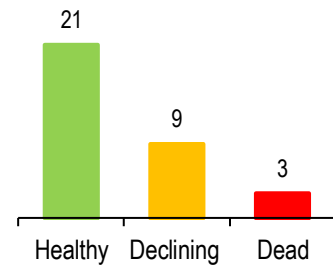
- 1** Canopy is healthy; no obvious forest health issues
- 2** Canopy is moderately healthy; some minor forest health issues but less than 30% tree mortality
- 3** Canopy health is affected by obvious forest health issues; greater than 30% tree mortality

Key findings

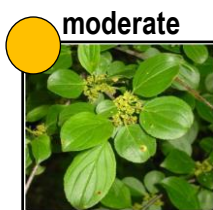
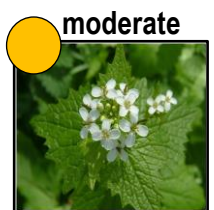

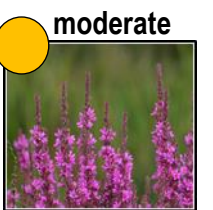
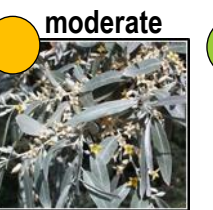
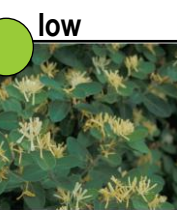
- Light defoliation due to spongy moth affecting basswood.
- Anthracnose causing light damage to silver maple.
- Isolated pocket of yard waste dumping and low level off-trail trampling.

Ash mortality update

Emerald Ash Borer (EAB) has significantly affected the health of ash trees in Oakville. A total of **33** ash trees were surveyed in this woodland to assess the impact of EAB to date. The graph represents each tree's individual health status.



Invasive plant presence

 moderate	 moderate	 moderate	 moderate	 moderate	 low
buckthorn	garlic mustard	periwinkle	purple loosestrife	Russian olive	honeysuckle

Merchants Trail

Canopy is healthy with no obvious forest health issues

1



Forest Health Rating Legend

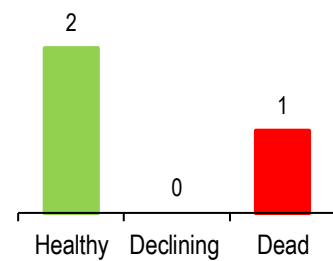
- 1** Canopy is healthy; no obvious forest health issues
- 2** Canopy is moderately healthy; some minor forest health issues but less than 30% tree mortality
- 3** Canopy health is affected by obvious forest health issues; greater than 30% tree mortality

Key findings

- Light defoliation due to spongy moth affecting walnut.
- Light defoliation of willow due to imported willow leaf beetle.
- Anthracnose causing light damage to silver maple.
- Scattered pockets of yard waste dumping.

Ash mortality update

Emerald Ash Borer (EAB) has significantly affected the health of ash trees in Oakville. A total of 3 ash trees were surveyed in this woodland to assess the impact of EAB to date. The graph represents each tree's individual health status.



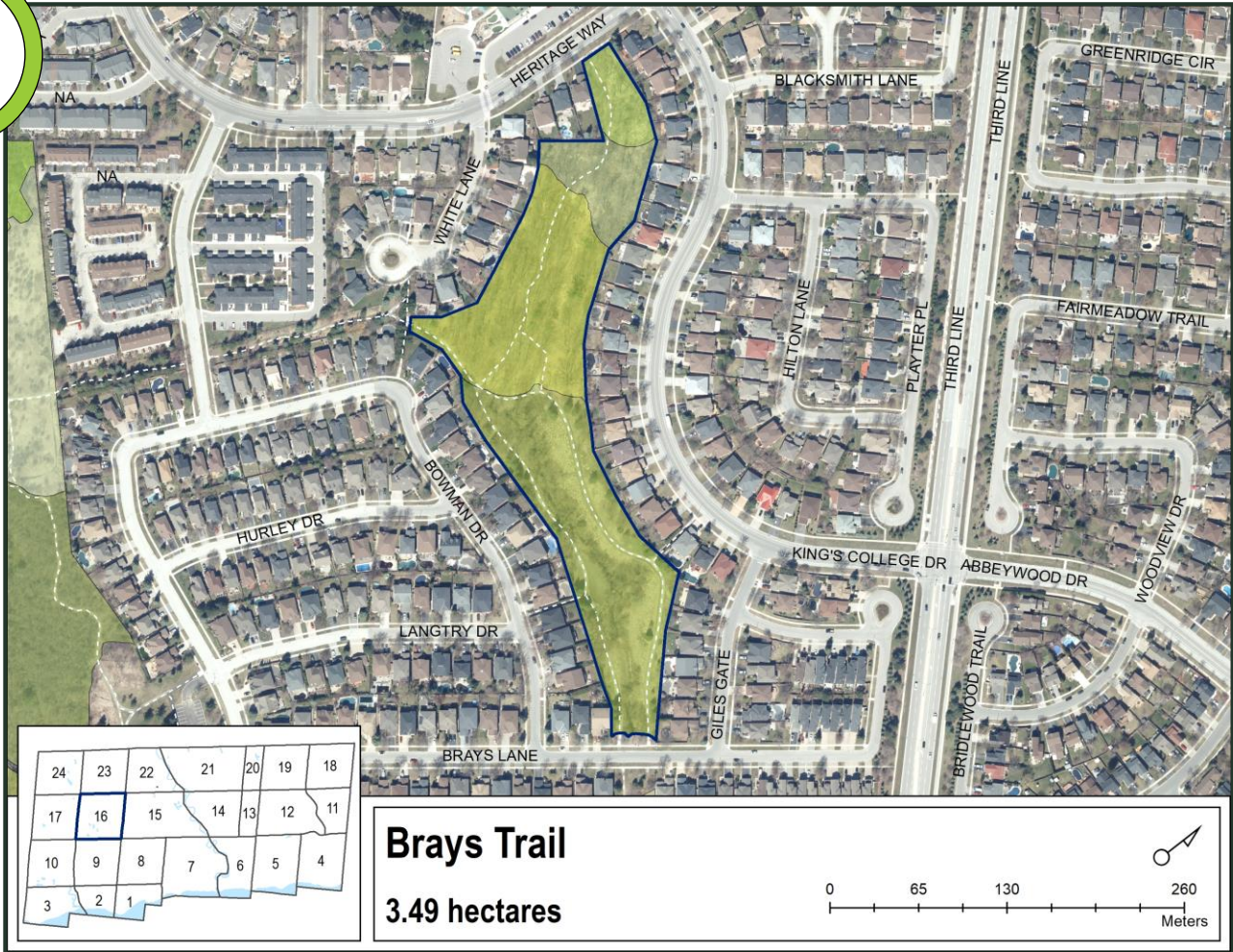
Invasive plant presence

moderate <p>buckthorn</p>	moderate <p>garlic mustard</p>	moderate <p>honeysuckle</p>	low <p>bindweed</p>
------------------------------	-----------------------------------	--------------------------------	------------------------

Brays Trail

Canopy is healthy with no obvious forest health issues

1



Forest Health Rating Legend

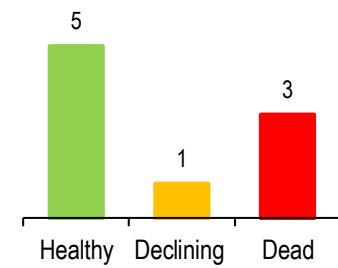
- 1** Canopy is healthy; no obvious forest health issues
- 2** Canopy is moderately healthy; some minor forest health issues but less than 30% tree mortality
- 3** Canopy health is affected by obvious forest health issues; greater than 30% tree mortality

Key findings

- Light defoliation due to spongy moth affecting a variety of hardwood species.
- Light defoliation of willow due to imported willow leaf beetle.
- Tar spot causing light damage to Norway maple.
- Isolated pocket of yard waste dumping and low level off-trail trampling.

Ash mortality update

Emerald Ash Borer (EAB) has significantly affected the health of ash trees in Oakville. A total of 9 ash trees were surveyed in this woodland to assess the impact of EAB to date. The graph represents each tree's individual health status.



Invasive plant presence

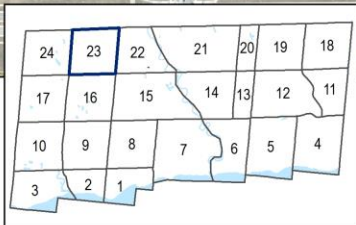
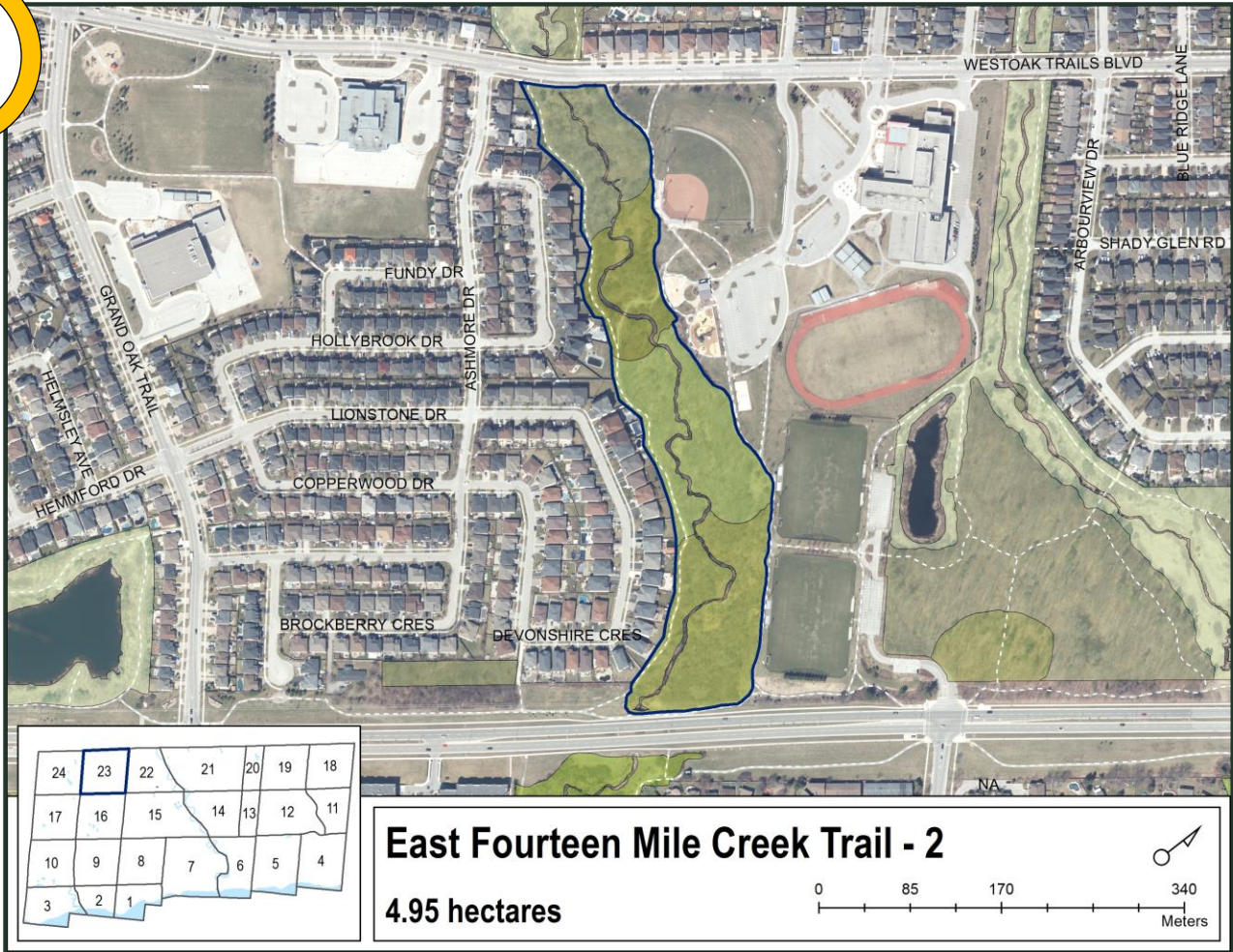
moderate buckthorn	moderate garlic mustard	moderate honeysuckle	low English ivy	low euonymus	low periwinkle
-----------------------	----------------------------	-------------------------	--------------------	-----------------	-------------------

Other species:
phragmites (low)

East Fourteen Mile Creek Trail - 2

Canopy is moderately healthy; some minor issues but less than 30% tree mortality

2



Forest Health Rating Legend

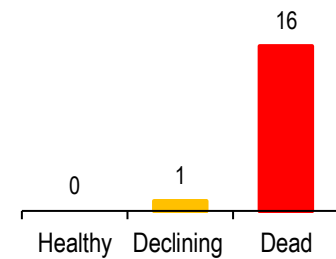
- 1** Canopy is healthy; no obvious forest health issues
- 2** Canopy is moderately healthy; some minor forest health issues but less than 30% tree mortality
- 3** Canopy health is affected by obvious forest health issues; greater than 30% tree mortality

Key findings

- Light defoliation due to spongy moth affecting oak, basswood, cherry, and hickory.
- Light defoliation of willow due to imported willow leaf beetle.
- Anthracnose causing light damage to bur oak.
- Isolated pocket of yard waste dumping and moderate level off-trail trampling.

Ash mortality update

Emerald Ash Borer (EAB) has significantly affected the health of ash trees in Oakville. A total of 17 ash trees were surveyed in this woodland to assess the impact of EAB to date. The graph represents each tree's individual health status.



Invasive plant presence

moderate buckthorn	moderate garlic mustard	moderate honeysuckle	low bindweed	low coltsfoot	low euonymus
---------------------------	--------------------------------	-----------------------------	---------------------	----------------------	---------------------

Other species:
purple loosestrife (low)
wild grape (low)



East Fourteen Mile Creek Trail - 2

Canopy is healthy with no obvious forest health issues

1



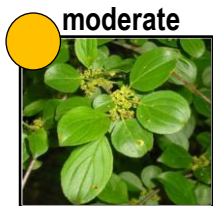
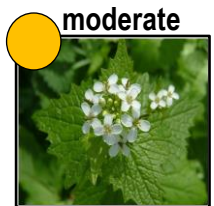
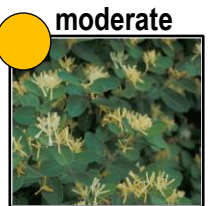
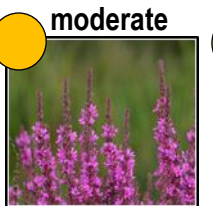


Forest Health Rating Legend

- 1** Canopy is healthy; no obvious forest health issues
- 2** Canopy is moderately healthy; some minor forest health issues but less than 30% tree mortality
- 3** Canopy health is affected by obvious forest health issues; greater than 30% tree mortality

Key findings

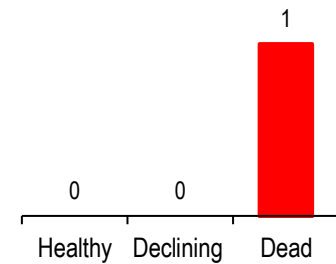
- Light defoliation due to spongy moth affecting oak, basswood, hawthorn, hickory, and poplar.
- Light defoliation of willow due to imported willow leaf beetle.
- Anthracnose causing light damage to bur oak.
- Dutch elm disease causing heavy damage to elm.
- Storm damage, scattered pockets of yard waste dumping, low level off-trail trampling, and some encroachment.

Invasive plant presence

 moderate	 moderate	 moderate	 moderate	 low	 low
buckthorn	garlic mustard	honeysuckle	purple loosestrife	bindweed	English ivy

Ash mortality update

Emerald Ash Borer (EAB) has significantly affected the health of ash trees in Oakville. A total of 1 ash tree was surveyed in this woodland to assess the impact of EAB to date. The graph represents each tree's individual health status.

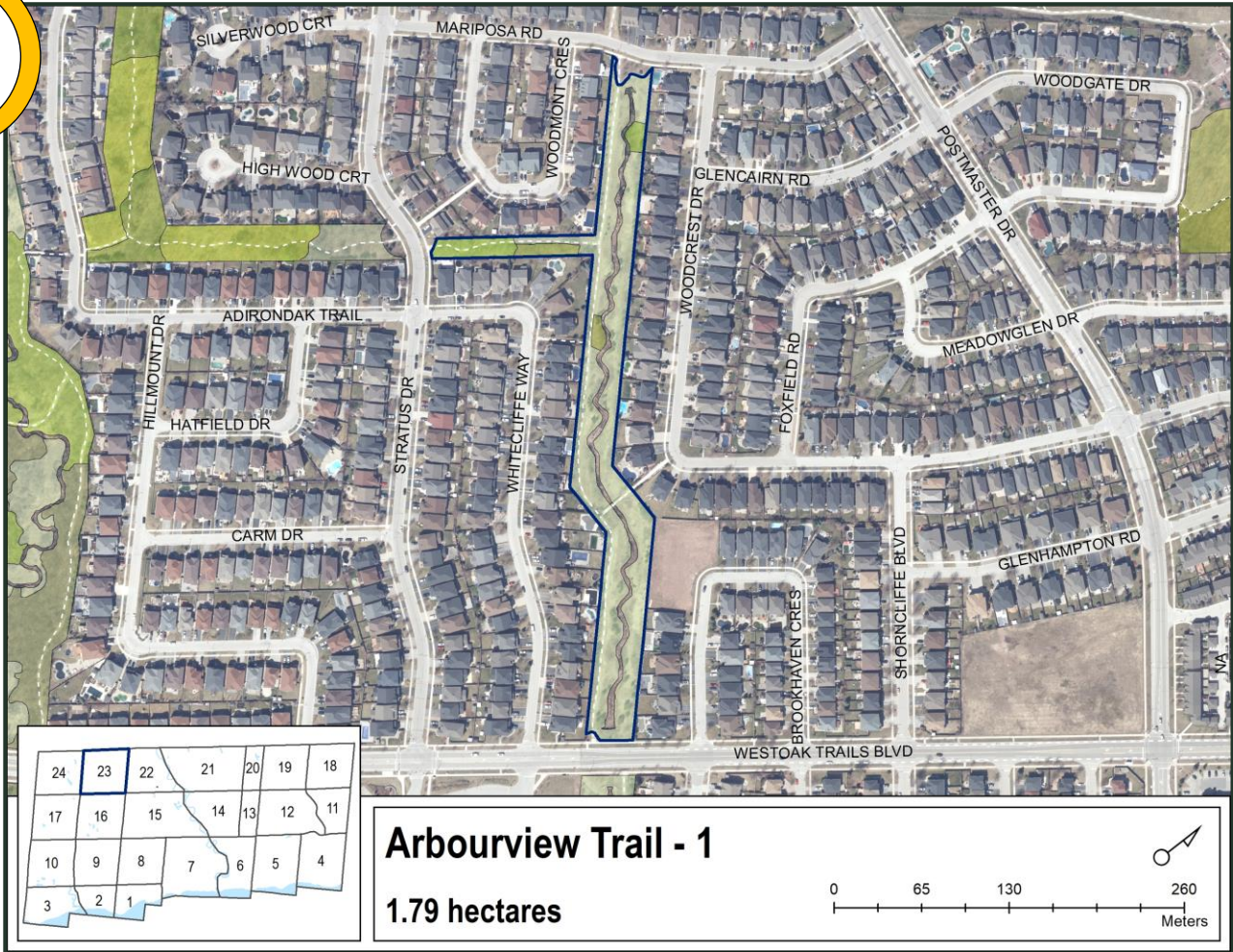


Other species:
goutweed (low)
phragmites (low)
wild grape (low)

Arbourview Trail - 1

Canopy is moderately healthy; some minor issues but less than 30% tree mortality

2



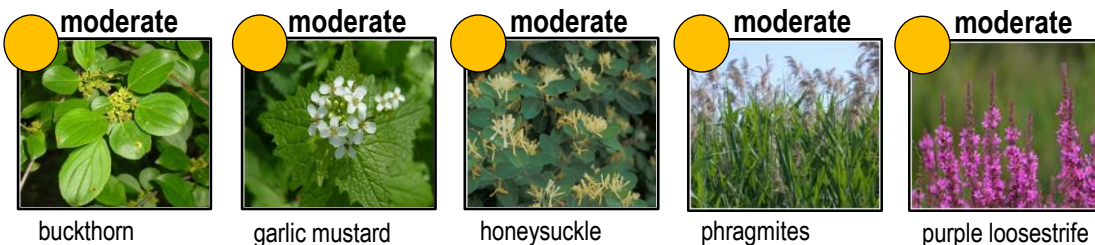
Forest Health Rating Legend

- 1** Canopy is healthy; no obvious forest health issues
- 2** Canopy is moderately healthy; some minor forest health issues but less than 30% tree mortality
- 3** Canopy health is affected by obvious forest health issues; greater than 30% tree mortality

Key findings

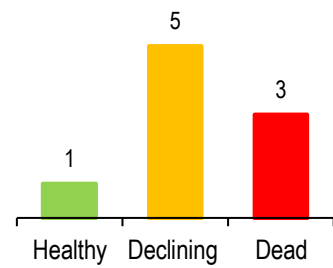
- Light defoliation due to spongy moth affecting oak, hawthorn, and hickory.
- Light defoliation of willow due to imported willow leaf beetle.
- Anthracnose causing light damage to bur oak and red maple.
- Isolated pockets of yard waste dumping and some encroachment.

Invasive plant presence



Ash mortality update

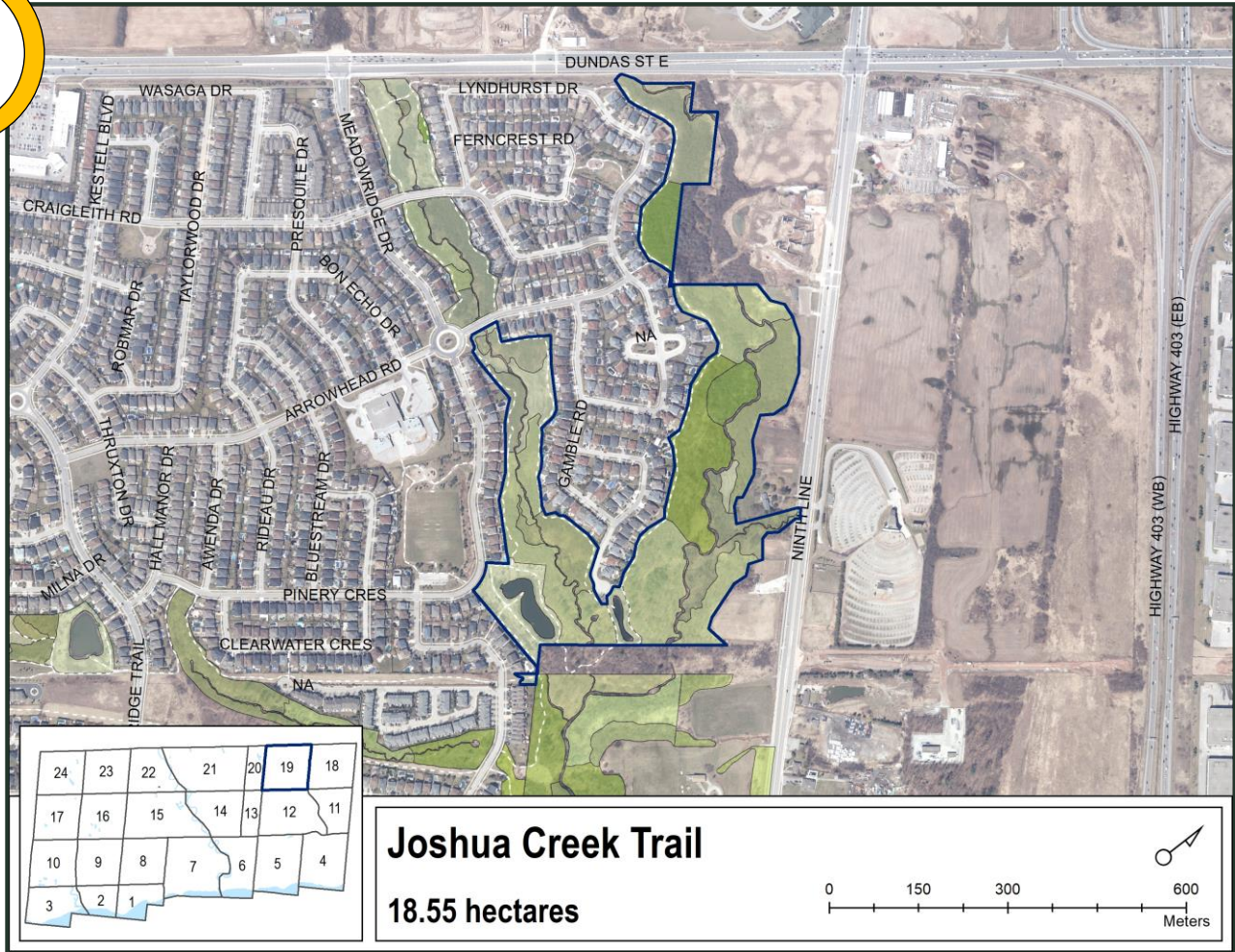
Emerald Ash Borer (EAB) has significantly affected the health of ash trees in Oakville. A total of 9 ash trees were surveyed in this woodland to assess the impact of EAB to date. The graph represents each tree's individual health status.



Joshua Creek Trail

Canopy is moderately healthy; some minor issues but less than 30% tree mortality

2



Forest Health Rating Legend

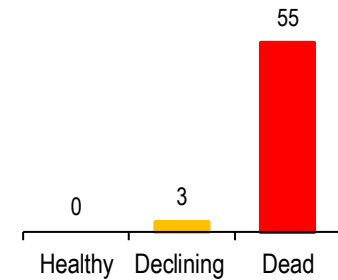
- 1** Canopy is healthy; no obvious forest health issues
- 2** Canopy is moderately healthy; some minor forest health issues but less than 30% tree mortality
- 3** Canopy health is affected by obvious forest health issues; greater than 30% tree mortality

Key findings

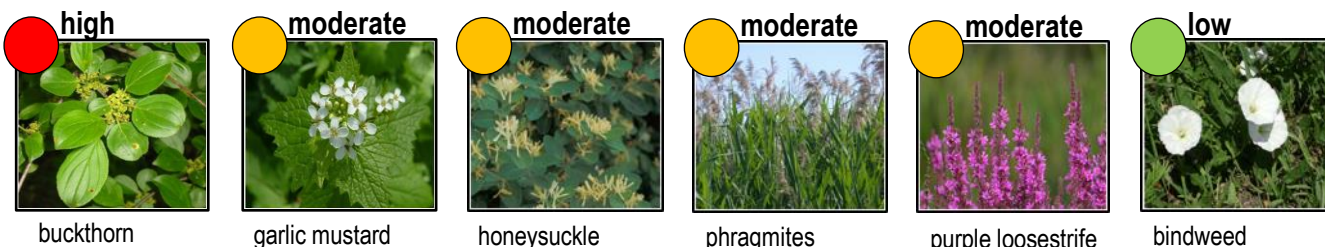
- Light defoliation due to spongy moth affecting a variety of hardwood species.
- Light defoliation of willow due to imported willow leaf beetle.
- Dutch elm disease causing heavy damage to American elm.
- Blowdown and storm damage.
- Scattered pockets of yard waste dumping, low level off-trail trampling, and some encroachment.
- One pocket of white pine decline.

Ash mortality update

Emerald Ash Borer (EAB) has significantly affected the health of ash trees in Oakville. A total of **58** ash trees were surveyed in this woodland to assess the impact of EAB to date. The graph represents each tree's individual health status.



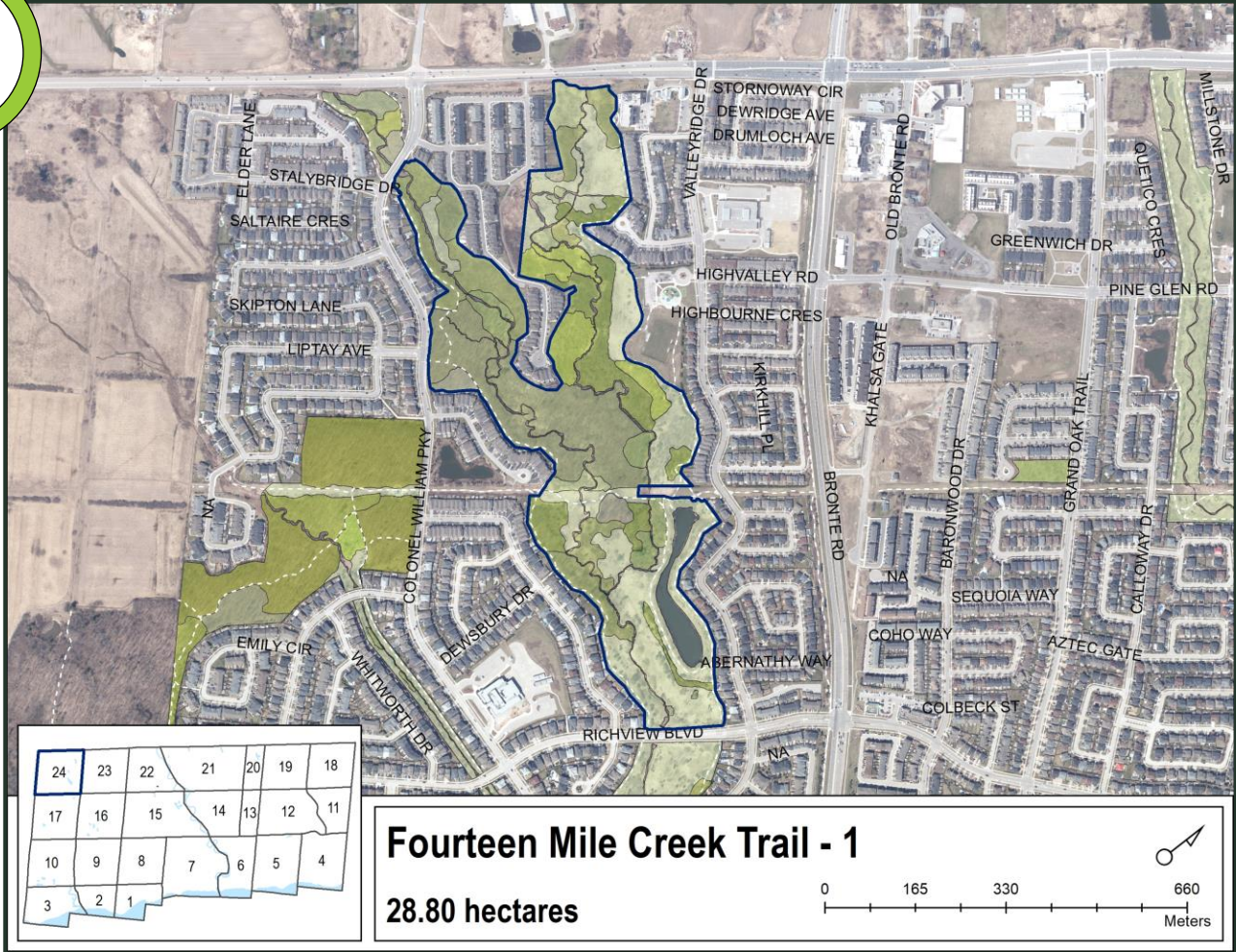
Invasive plant presence



Fourteen Mile Creek Trail - 1

Canopy is healthy with no obvious forest health issues

1



Forest Health Rating Legend

- 1** Canopy is healthy; no obvious forest health issues
- 2** Canopy is moderately healthy; some minor forest health issues but less than 30% tree mortality
- 3** Canopy health is affected by obvious forest health issues; greater than 30% tree mortality

Key findings

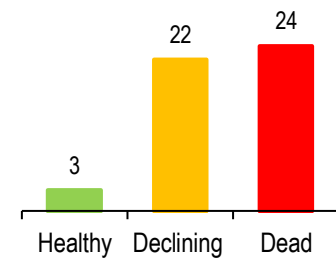
- Light defoliation due to spongy moth affecting oak, basswood, and hickory.
- Light defoliation of willow due to imported willow leaf beetle.
- Anthracnose causing light damage to bur oak.
- Fire blight causing moderate damage to pear.
- Isolated pocket of white pine decline.
- Isolated pockets of yard waste dumping, low level off-trail trampling, and some encroachment.

Invasive plant presence

moderate 	moderate 	moderate 	low 	low 	low
buckthorn	garlic mustard	honeysuckle	bindweed	coltsfoot	English ivy

Ash mortality update

Emerald Ash Borer (EAB) has significantly affected the health of ash trees in Oakville. A total of **49** ash trees were surveyed in this woodland to assess the impact of EAB to date. The graph represents each tree's individual health status.



Other species:
 euonymus (low)
 Japanese knotweed (low)
 periwinkle (low)
 phragmites (low)
 Russian olive (low)
 etc.

Fourteen Mile Creek Trail - 1

Canopy is healthy with no obvious forest health issues

1



Forest Health Rating Legend

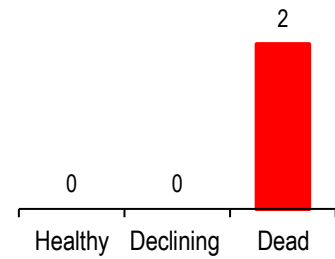
- 1** Canopy is healthy; no obvious forest health issues
- 2** Canopy is moderately healthy; some minor forest health issues but less than 30% tree mortality
- 3** Canopy health is affected by obvious forest health issues; greater than 30% tree mortality

Key findings

- Light defoliation due to spongy moth affecting oak and hickory.
- Storm damage, isolated pocket of yard waste dumping, and low level off-trail trampling.

Ash mortality update

Emerald Ash Borer (EAB) has significantly affected the health of ash trees in Oakville. A total of **2** ash trees were surveyed in this woodland to assess the impact of EAB to date. The graph represents each tree's individual health status.



Invasive plant presence

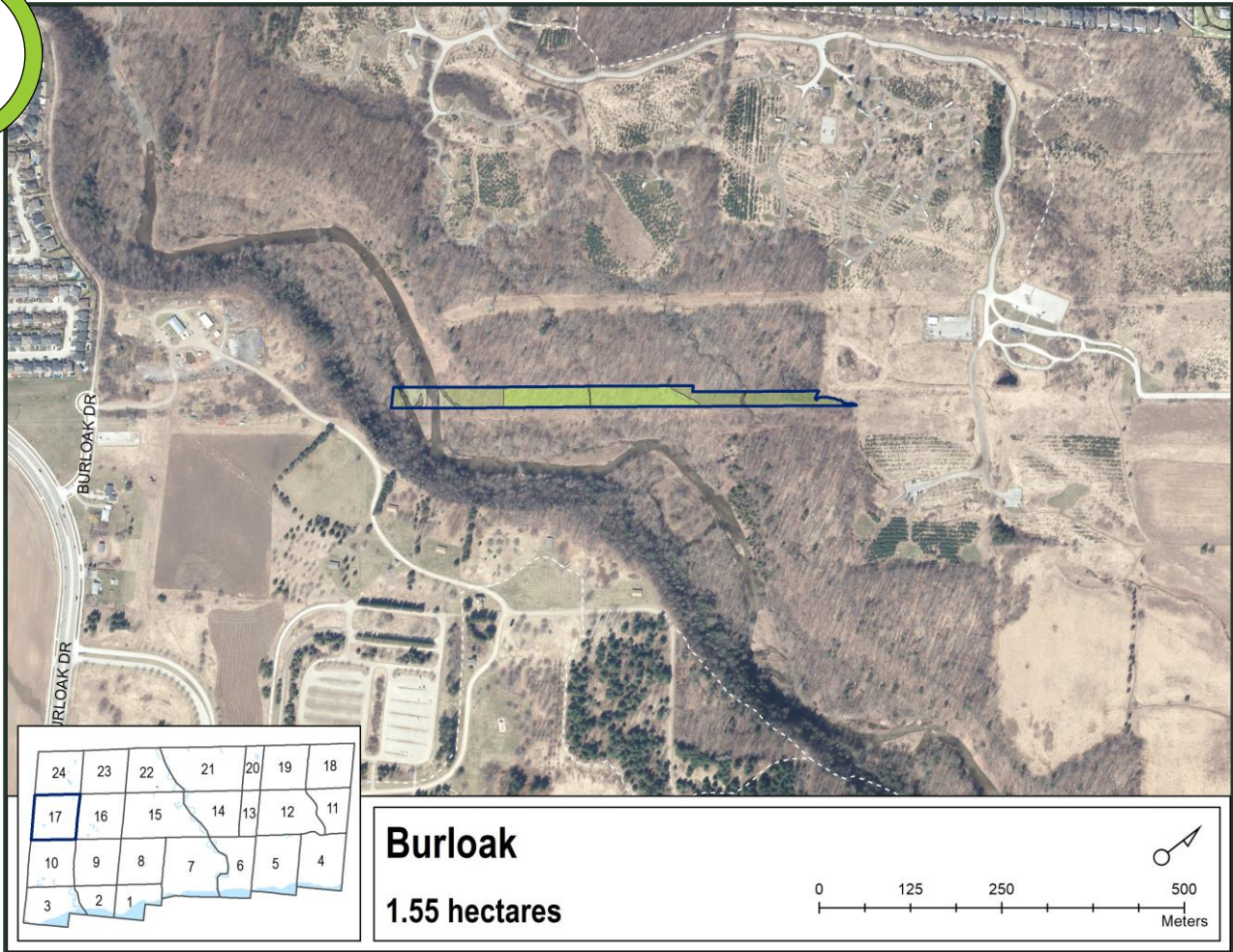
 moderate buckthorn	 moderate garlic mustard	 moderate honeysuckle	 low bindweed	 low coltsfoot	 low Japanese knotweed
--------------------------------------	---	--	--------------------------------	---------------------------------	---

Other species:
phragmites (low)

Burloak

1

Canopy is healthy with no obvious forest health issues



Forest Health Rating Legend

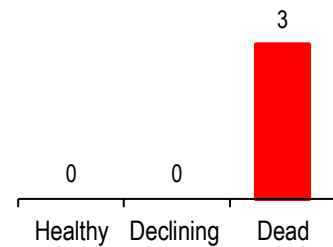
- 1** Canopy is healthy; no obvious forest health issues
- 2** Canopy is moderately healthy; some minor forest health issues but less than 30% tree mortality
- 3** Canopy health is affected by obvious forest health issues; greater than 30% tree mortality

Key findings

- Light defoliation due to spongy moth affecting oak, beech, and hickory.
- Low level off-trail trampling.

Ash mortality update

Emerald Ash Borer (EAB) has significantly affected the health of ash trees in Oakville. A total of **3** ash trees were surveyed in this woodland to assess the impact of EAB to date. The graph represents each tree's individual health status.



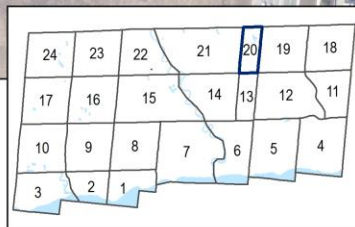
Invasive plant presence

 moderate <p>garlic mustard</p>	 low <p>buckthorn</p>
--	------------------------------------

Morrison Valley North U.M.R. - 1

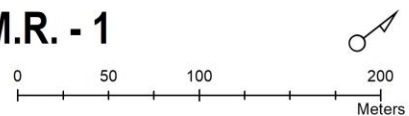
Canopy is healthy with no obvious forest health issues

1



Morrison Valley North U.M.R. - 1

2.71 hectares



Forest Health Rating Legend

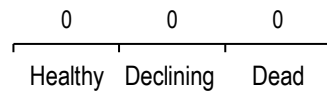
- 1** Canopy is healthy; no obvious forest health issues
- 2** Canopy is moderately healthy; some minor forest health issues but less than 30% tree mortality
- 3** Canopy health is affected by obvious forest health issues; greater than 30% tree mortality

Key findings

- Light defoliation of willow due to imported willow leaf beetle.
- Light defoliation of elm due to elm leaf beetle.
- Scattered pockets of yard waste dumping, low level off-trail trampling, and some encroachment.

Ash mortality update

Emerald Ash Borer (EAB) has significantly affected the health of ash trees in Oakville. A total of **0** ash trees were surveyed in this woodland to assess the impact of EAB to date. The graph represents each tree's individual health status.



Invasive plant presence

high	moderate	moderate	low	low	low
buckthorn	garlic mustard	honeysuckle	Japanese knotweed	phragmites	purple loosestrife

Other species: periwinkle (low)

Clear Creek Park

Canopy is healthy with no obvious forest health issues

1



Forest Health Rating Legend

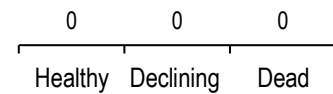
- 1** Canopy is healthy; no obvious forest health issues
- 2** Canopy is moderately healthy; some minor forest health issues but less than 30% tree mortality
- 3** Canopy health is affected by obvious forest health issues; greater than 30% tree mortality

Key findings

- Light defoliation due to spongy moth affecting oak, apple, aspen, basswood, and maple.
- Low level off-trail trampling.

Ash mortality update

Emerald Ash Borer (EAB) has significantly affected the health of ash trees in Oakville. A total of **0** ash trees were surveyed in this woodland to assess the impact of EAB to date. The graph represents each tree's individual health status.



Invasive plant presence

moderate <p>buckthorn</p>	moderate <p>euonymus</p>	moderate <p>garlic mustard</p>	moderate <p>honeysuckle</p>	low <p>English ivy</p>	low <p>periwinkle</p>
------------------------------	-----------------------------	-----------------------------------	--------------------------------	---------------------------	--------------------------

Other species:
wild grape (low)

The Parkway - 1

Canopy is moderately healthy; some minor issues but less than 30% tree mortality

2



Forest Health Rating Legend

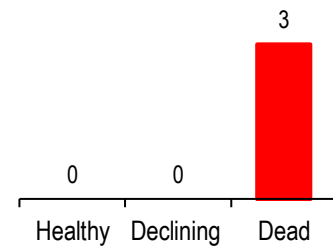
- 1** Canopy is healthy; no obvious forest health issues
- 2** Canopy is moderately healthy; some minor forest health issues but less than 30% tree mortality
- 3** Canopy health is affected by obvious forest health issues; greater than 30% tree mortality

Key findings







- Light defoliation due to spongy moth affecting oak, hawthorn, and hickory.
- Light defoliation of willow due to imported willow leaf beetle.
- Anthracnose causing light damage to bur oak.
- Some elm mortality.
- Low level off-trail trampling.

Ash mortality update

Emerald Ash Borer (EAB) has significantly affected the health of ash trees in Oakville. A total of **3** ash trees were surveyed in this woodland to assess the impact of EAB to date. The graph represents each tree's individual health status.



Invasive plant presence

 moderate	 moderate	 moderate
		
buckthorn	garlic mustard	purple loosestrife

Kingsway Park

Canopy is healthy with no obvious forest health issues

1



Forest Health Rating Legend

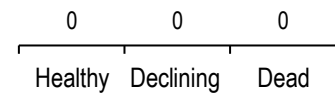
- 1** Canopy is healthy; no obvious forest health issues
- 2** Canopy is moderately healthy; some minor forest health issues but less than 30% tree mortality
- 3** Canopy health is affected by obvious forest health issues; greater than 30% tree mortality

Key findings









- Light defoliation due to spongy moth affecting oak.
- Low level of off-trail trampling.

Ash mortality update

Emerald Ash Borer (EAB) has significantly affected the health of ash trees in Oakville. A total of **0** ash trees were surveyed in this woodland to assess the impact of EAB to date. The graph represents each tree's individual health status.



Invasive plant presence

 high	 moderate	 low	 low
			
buckthorn	garlic mustard	honeysuckle	wild grape

Clearview Woods

Canopy is healthy with no obvious forest health issues

1



Forest Health Rating Legend

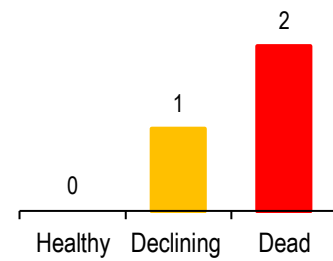
- 1** Canopy is healthy; no obvious forest health issues
- 2** Canopy is moderately healthy; some minor forest health issues but less than 30% tree mortality
- 3** Canopy health is affected by obvious forest health issues; greater than 30% tree mortality

Key findings

- Light defoliation due to spongy moth affecting oak, basswood, beech, hickory, and maple.
- Decline of oak, elm, and maple.
- Storm damage.
- Low level off-trail trampling.

Ash mortality update

Emerald Ash Borer (EAB) has significantly affected the health of ash trees in Oakville. A total of **3** ash trees were surveyed in this woodland to assess the impact of EAB to date. The graph represents each tree's individual health status.



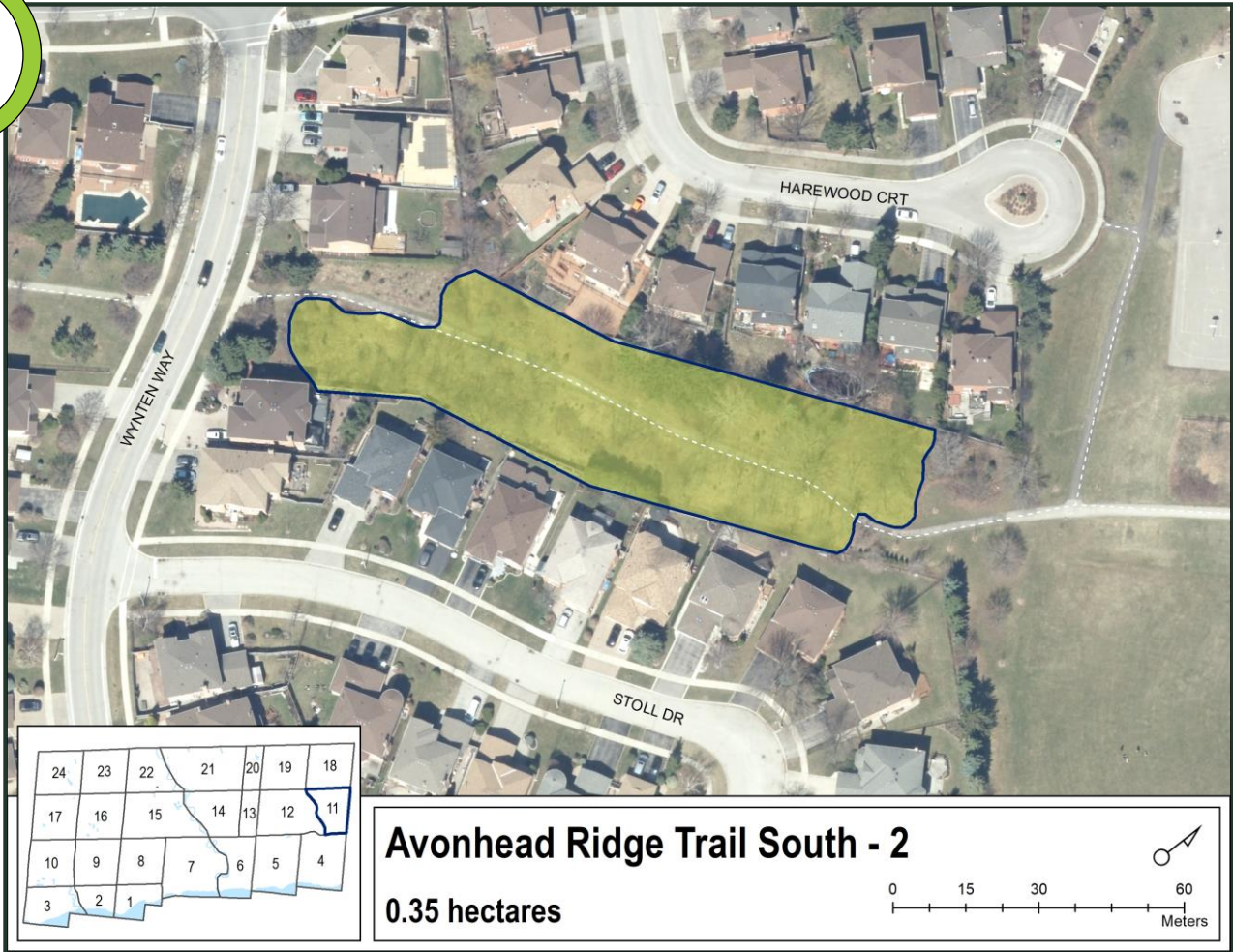
Invasive plant presence

moderate <p>buckthorn</p>	moderate <p>garlic mustard</p>	moderate <p>honeysuckle</p>
------------------------------	-----------------------------------	--------------------------------

Avonhead Ridge Trail South - 2

Canopy is healthy with no obvious forest health issues

1



Forest Health Rating Legend

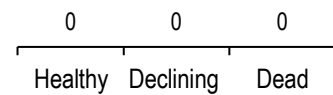
- 1** Canopy is healthy; no obvious forest health issues
- 2** Canopy is moderately healthy; some minor forest health issues but less than 30% tree mortality
- 3** Canopy health is affected by obvious forest health issues; greater than 30% tree mortality

Key findings

- Light defoliation due to spongy moth affecting oak, basswood, hawthorn, and maple.
- Anthracnose causing light damage to bur oak.

Ash mortality update

Emerald Ash Borer (EAB) has significantly affected the health of ash trees in Oakville. A total of **0** ash trees were surveyed in this woodland to assess the impact of EAB to date. The graph represents each tree's individual health status.



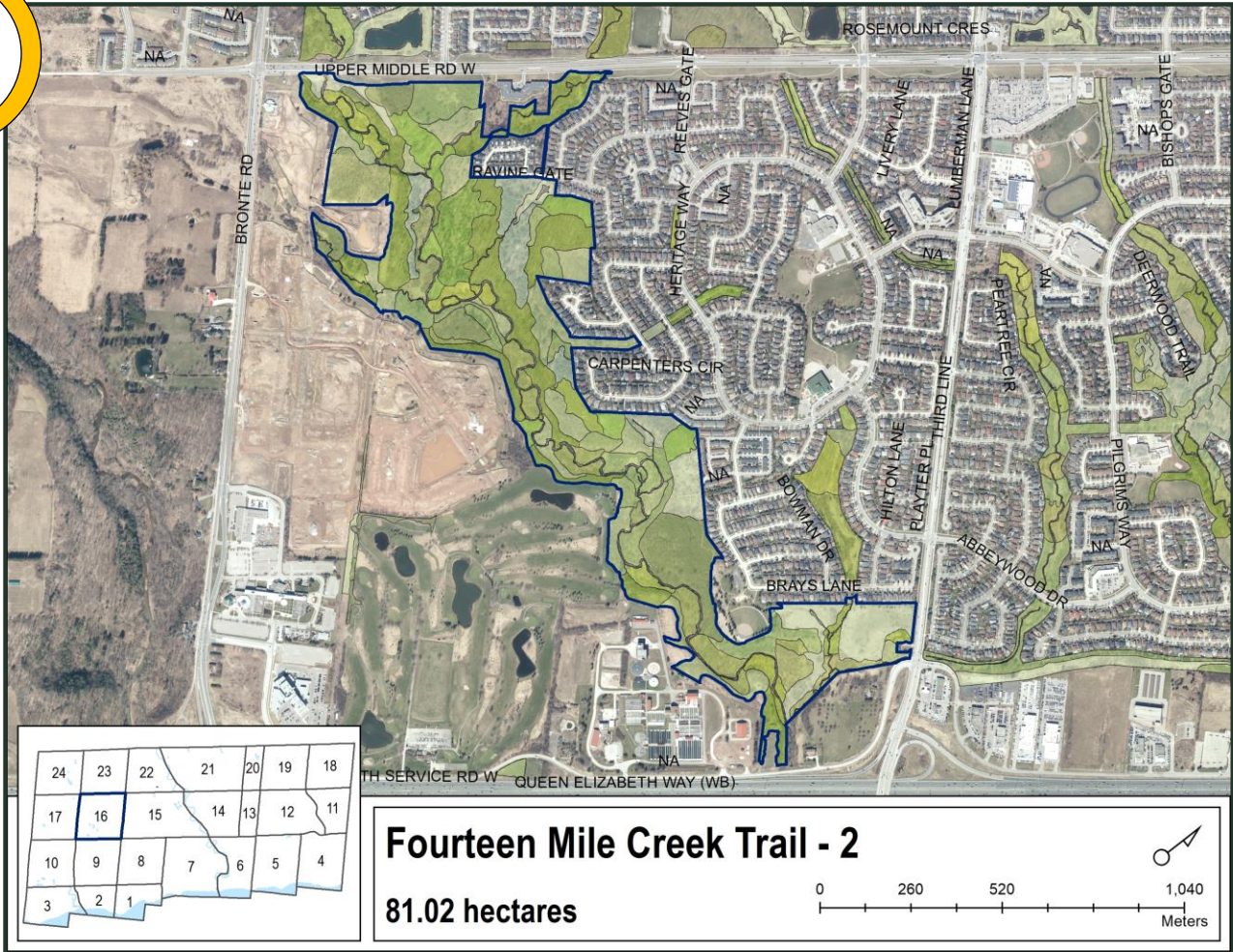
Invasive plant presence

<p>high</p> <p>garlic mustard</p>	<p>moderate</p> <p>buckthorn</p>	<p>moderate</p> <p>honeysuckle</p>
--	---	---

Fourteen Mile Creek Trail - 2

Canopy is moderately healthy; some minor issues but less than 30% tree mortality

2












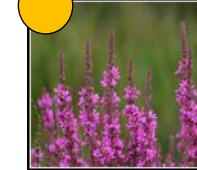


Forest Health Rating Legend

- 1** Canopy is healthy; no obvious forest health issues
- 2** Canopy is moderately healthy; some minor forest health issues but less than 30% tree mortality
- 3** Canopy health is affected by obvious forest health issues; greater than 30% tree mortality

Key findings

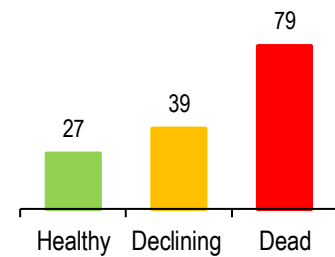
- Light defoliation due to spongy moth affecting a variety of hardwood species.
- Light defoliation of willow due to imported willow leaf beetle.
- Beech leaf disease present on American beech.
- Storm damage.
- Isolated pocket of yard waste dumping and moderate off-trail trampling.
- Decline of Scots pine and isolated pockets of white pine decline.

Invasive plant presence

 moderate	 moderate	 moderate	 moderate	 low	 low
					
buckthorn	garlic mustard	honeysuckle	purple loosestrife	bindweed	coltsfoot

Ash mortality update

Emerald Ash Borer (EAB) has significantly affected the health of ash trees in Oakville. A total of **145** ash trees were surveyed in this woodland to assess the impact of EAB to date. The graph represents each tree's individual health status.

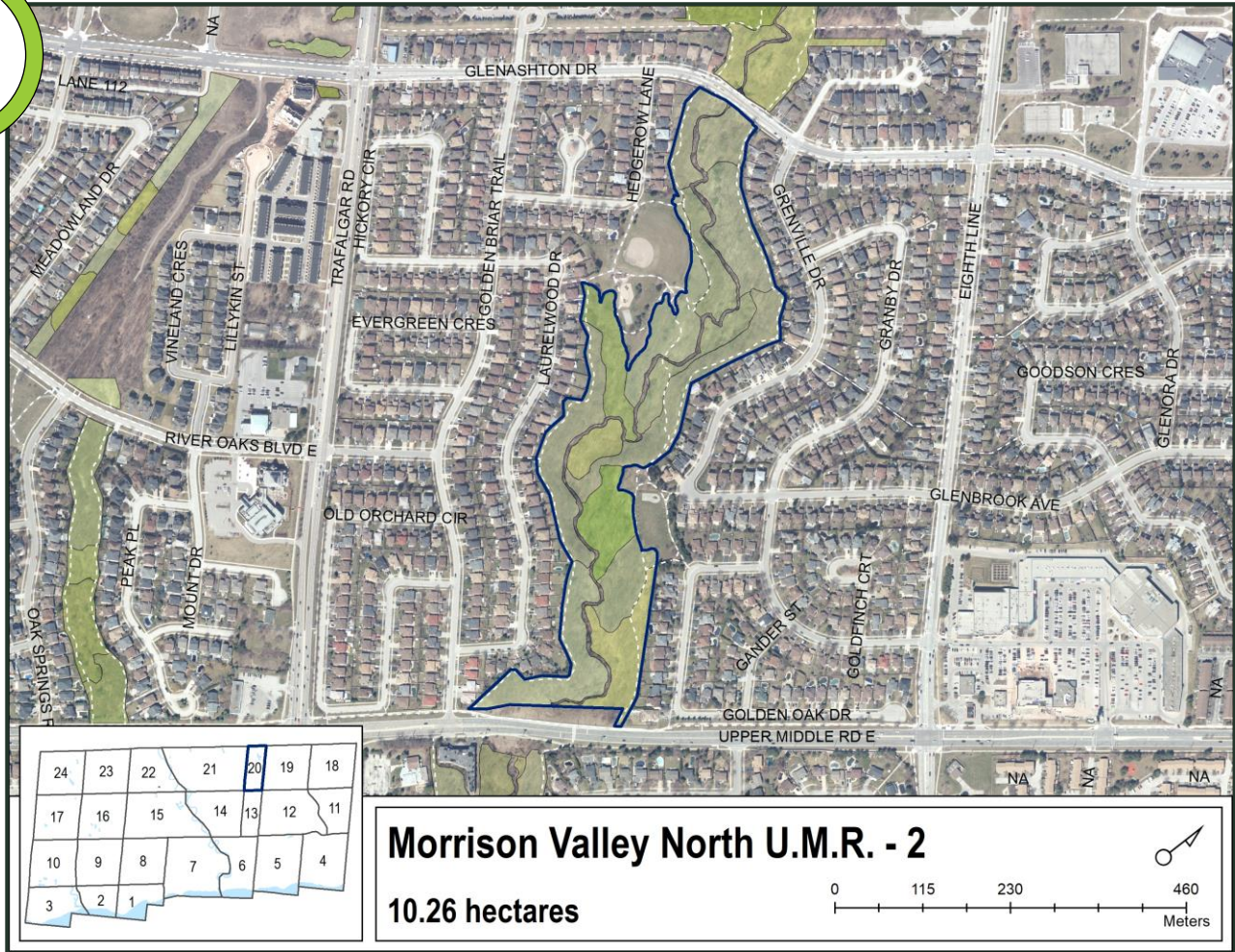


- Other species:**
- dog-strangling vine (low)
 - English ivy (low)
 - euonymus (low)
 - periwinkle (low)
 - phragmites (low)

Morrison Valley North U.M.R. - 2

Canopy is healthy with no obvious forest health issues

1



Forest Health Rating Legend

- 1** Canopy is healthy; no obvious forest health issues
- 2** Canopy is moderately healthy; some minor forest health issues but less than 30% tree mortality
- 3** Canopy health is affected by obvious forest health issues; greater than 30% tree mortality

Key findings

- Light defoliation due to spongy moth affecting a variety of hardwood species.
- Anthracnose causing light damage to bur oak.
- Tar spot causing light damage to Norway maple.
- Harvesting and storm damage.
- Scattered pockets of yard waste dumping, low level off-trail trampling, and some encroachment.

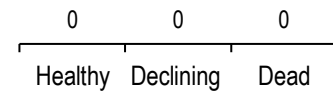
Invasive plant presence

moderate 	moderate 	moderate 	low 	low 	low
buckthorn	garlic mustard	honeysuckle	English ivy	euonymus	periwinkle

Other species:
wild grape (low)

Ash mortality update

Emerald Ash Borer (EAB) has significantly affected the health of ash trees in Oakville. A total of **0** ash trees were surveyed in this woodland to assess the impact of EAB to date. The graph represents each tree's individual health status.



Fiskin Property

Canopy is healthy with no obvious forest health issues

1



Forest Health Rating Legend

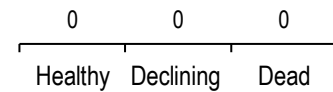
- 1** Canopy is healthy; no obvious forest health issues
- 2** Canopy is moderately healthy; some minor forest health issues but less than 30% tree mortality
- 3** Canopy health is affected by obvious forest health issues; greater than 30% tree mortality

Key findings

- No key findings.

Ash mortality update

Emerald Ash Borer (EAB) has significantly affected the health of ash trees in Oakville. A total of **0** ash trees were surveyed in this woodland to assess the impact of EAB to date. The graph represents each tree's individual health status.



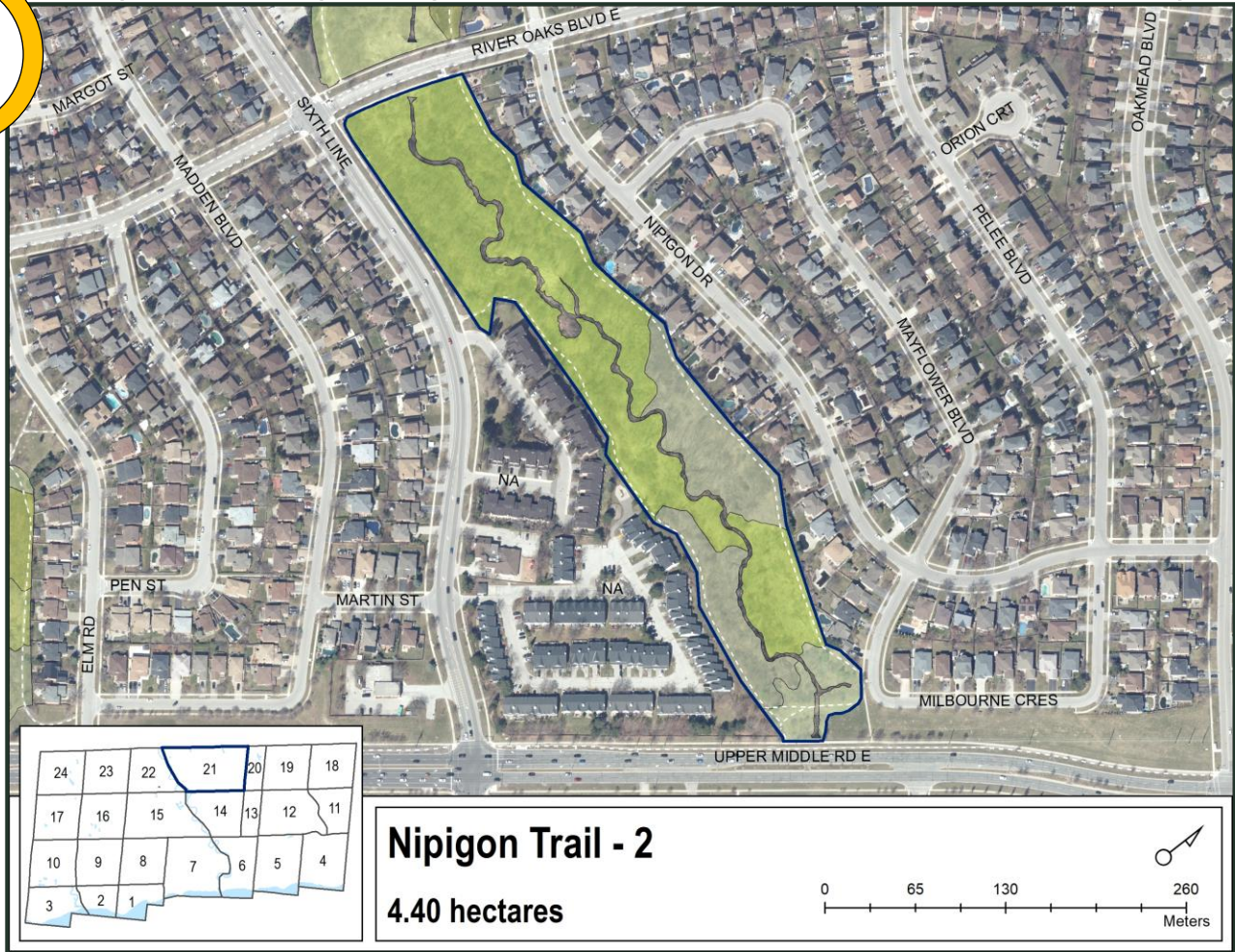
Invasive plant presence

moderate <p>bindweed</p>	moderate <p>buckthorn</p>	moderate <p>honeysuckle</p>	low <p>phragmites</p>
-----------------------------	------------------------------	--------------------------------	--------------------------

Nipigon Trail - 2

2

Canopy is moderately healthy; some minor issues but less than 30% tree mortality



Forest Health Rating Legend

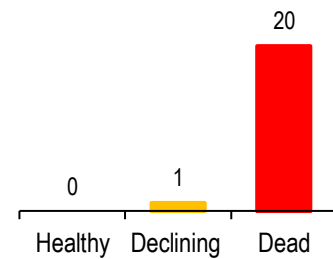
- 1** Canopy is healthy; no obvious forest health issues
- 2** Canopy is moderately healthy; some minor forest health issues but less than 30% tree mortality
- 3** Canopy health is affected by obvious forest health issues; greater than 30% tree mortality

Key findings




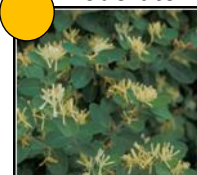


- Light defoliation due to spongy moth affecting oak, apple, basswood, and elm.
- Scattered pockets of yard waste dumping and low level off-trail trampling.

Ash mortality update

Emerald Ash Borer (EAB) has significantly affected the health of ash trees in Oakville. A total of **21** ash trees were surveyed in this woodland to assess the impact of EAB to date. The graph represents each tree's individual health status.



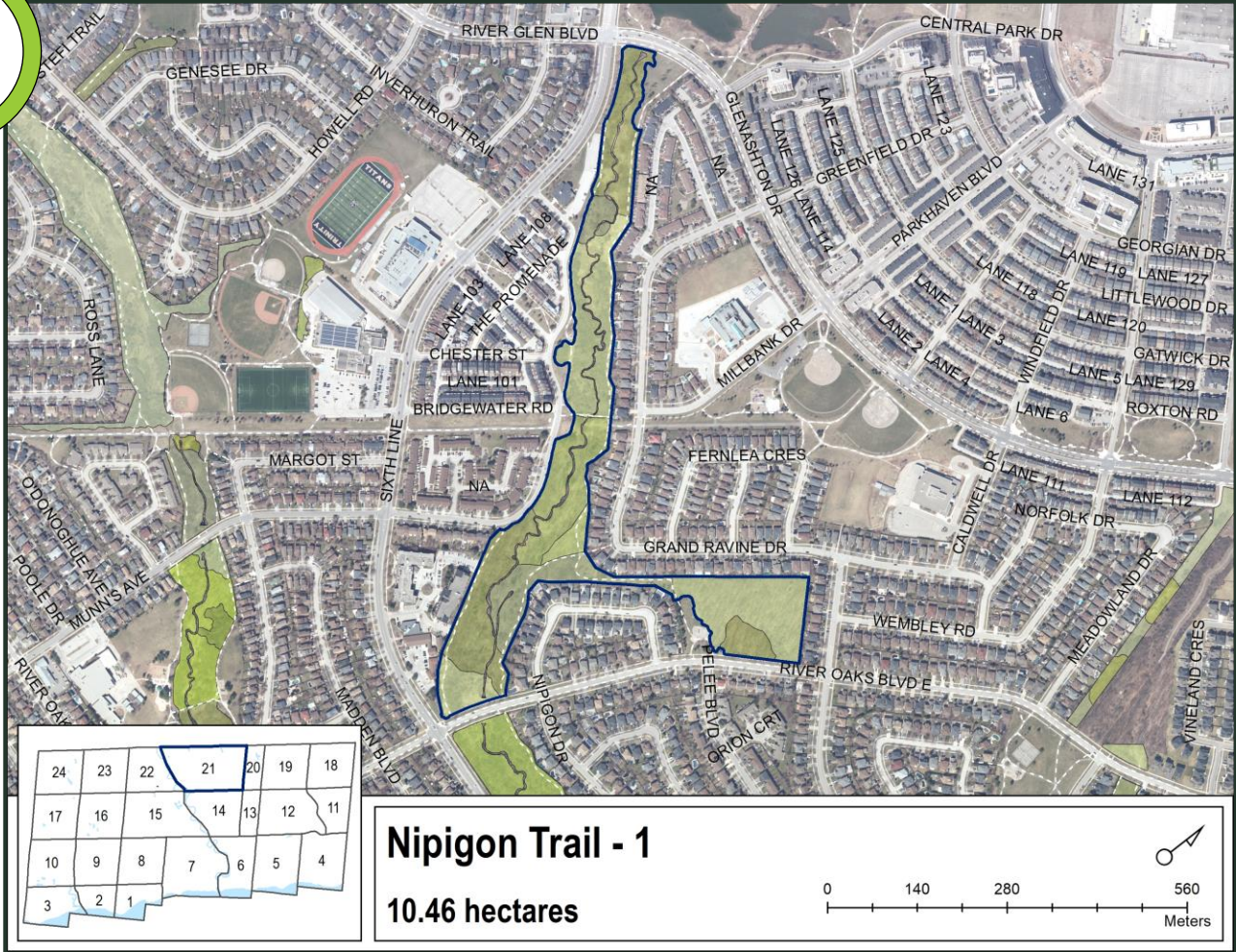
Invasive plant presence

 moderate	 moderate	 moderate	 moderate	 moderate	 moderate
buckthorn	euonymus	garlic mustard	honeysuckle	periwinkle	phragmites

Other species: wild grape (low)

Nipigon Trail - 1

Canopy is healthy with no obvious forest health issues



Forest Health Rating Legend

- 1** Canopy is healthy; no obvious forest health issues
- 2** Canopy is moderately healthy; some minor forest health issues but less than 30% tree mortality
- 3** Canopy health is affected by obvious forest health issues; greater than 30% tree mortality

Key findings

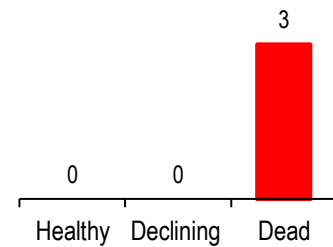
- Light defoliation due to spongy moth affecting various hardwood species.
- Light defoliation of willow due to imported willow leaf beetle.
- European elm scale present on elm, causing minor damage.
- Anthracnose causing light damage to maple and oak.
- Dutch elm disease causing heavy damage and mortality to elm.
- Oak leaf blister disease causing light damage to red oak.
- Butternut canker causing light damage to hybrid butternut.
- Storm damage, scattered pockets of yard waste dumping, low level off-trail trampling, and some encroachment.

Invasive plant presence

moderate 	moderate 	moderate 	moderate 	low 	low
buckthorn	garlic mustard	honeysuckle	periwinkle	bindweed	English ivy

Ash mortality update

Emerald Ash Borer (EAB) has significantly affected the health of ash trees in Oakville. A total of **3** ash trees were surveyed in this woodland to assess the impact of EAB to date. The graph represents each tree's individual health status.



Other species:
purple loosestrife (low)