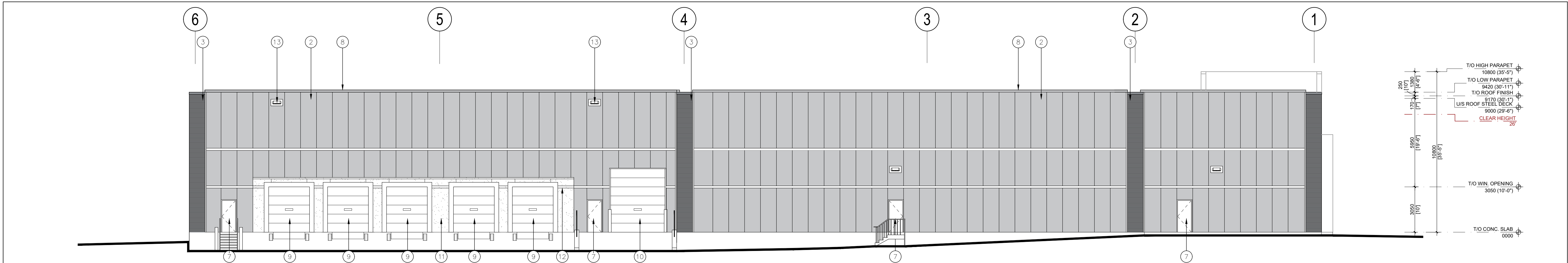


1 South Elevation  
A-3.0 1:125



2 North Elevation  
A-3.0 1:125

- 1a ALUMINIUM COMPOSITE PANEL BY ALUCOBOND OR APPROVED EQUAL. COLOUR TO BE PURE WHITE. SAMPLE TO BE SUBMITTED FOR ARCHITECT'S APPROVAL.
- 1b ALUMINIUM COMPOSITE PANELS BY ALUCOBOND OR APPROVED EQUAL. COLOUR TO BE GRAPHITE MICA. SAMPLE TO BE SUBMITTED FOR ARCHITECT'S APPROVAL.
- 2 INSULATED METAL PANELS BY KINGSPAN. COLOUR TO DRIFTWOOD (GREY). SAMPLE TO BE SUBMITTED FOR ARCHITECT'S APPROVAL.
- 3 INSULATED METAL PANELS BY KINGSPAN. COLOUR TO BE ZINC GREY MICRO-RIB. SAMPLE TO BE SUBMITTED FOR ARCHITECT'S APPROVAL.
- 4 THERMAL DOUBLE GLAZING (SOLAR GREY TINT) IN PREFINISHED ALUMINIUM CURTAIN WALL FRAMES.
- 5 SPANDREL GLAZING IN PREFINISHED ALUMINIUM CURTAIN WALL FRAMES. COLOUR OF SPANDREL: DARK GREY TINT TO MATCH INKAN 3-121-I.
- 6 ALUMINIUM AND TEMPERED THERMAL GLASS DOOR(S) IN ALUMINIUM CURTAIN WALL DOOR FRAMING SYSTEM. GLASS TO BE CLEAR. ALUMINIUM COLOUR TO MATCH WINDOW GLAZING SYSTEM ALUMINIUM COLOUR.
- 7 INSULATED HOLLOW METAL DOOR IN PRESSED STEEL THERMAL FRAME. DOOR AND FRAME PAINTED TO MATCH ADJACENT WALL COLOUR.
- 8 PREFINISHED METAL COPING. COLOUR TO MATCH ADJACENT MATERIAL DIRECTLY BELOW.
- 9 INSULATED HOLLOW METAL OVERHEAD DOOR C/W TEMPERED GLASS VIEW WINDOW. COLOUR TO BE GREY TO MATCH INSULATED METAL PANELS. C/W DOCK SEAL, DOCK LEVELLER AND DOCK BUMPERS.
- 10 INSULATED HOLLOW METAL OVERHEAD DOOR C/W TEMPERED GLASS VIEW WINDOW. COLOUR TO BE GREY TO MATCH INSULATED METAL PANELS.
- 11 PRECAST CONCRETE WITH AGGREGATE FINISH. COLOUR TO BE WHITE.
- 12 SMOOTH RECESSED BAND(S). 10mm DEEP.
- 13 LIGHT FIXTURE. SEE ELECTRICAL DRAWINGS FOR MOUNTING HEIGHTS.

No.	ISSUED	DATE
1	ISSUED FOR CLIENT REVIEW	JULY 7, 2021
2	ISSUED FOR SPA	JULY 21, 2021
3	RE-SSUED FOR SPA	NOV. 5, 2021
4	RE-SSUED FOR SPA	MAR. 2, 2022

No.	REVISION	DATE

**BALDASSARRA**  
Architects Inc.

30 Great Gulf Drive, Unit 20 | Concord ON | L4K 0K7  
T: 905.660.0722 | [www.baldassarra.ca](http://www.baldassarra.ca)

OWNERS INFORMATION:  
LPF Realty Office Inc.



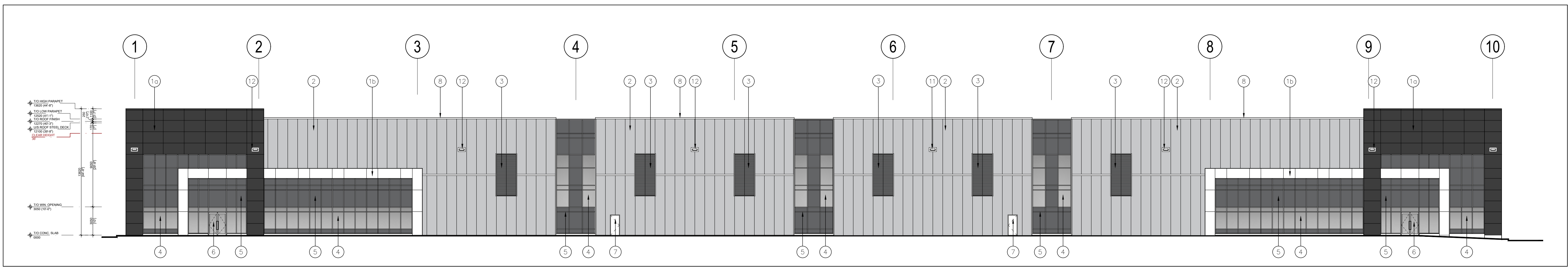
Fengate- Oakville

549 Great Lakes Boulevard  
Oakville, ON

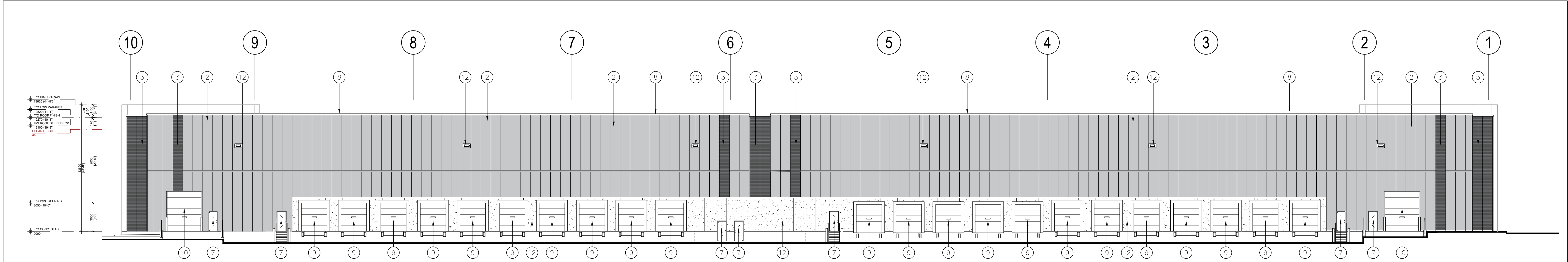
Elevations  
Building 'A'

DATE:	DRAWN BY:	CHECKED:	SCALE:
JULY 2021	DW/HP		AS NOTED
PROJECT No.		DRAWING No.	

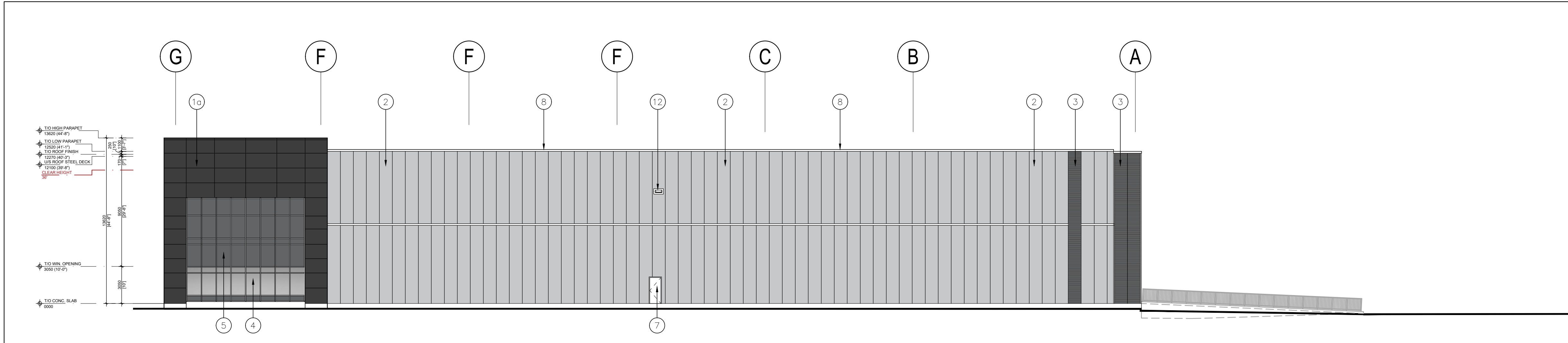
22-21 A A-3.0A



1 South Elevation  
A-3.0 1:200



2 North Elevation  
A-3.0 1:200



3 East Elevation  
A-3.0 1:200

- 1a ALUMINIUM COMPOSITE PANELS BY ALUCOBOND OR APPROVED EQUAL. COLOUR TO BE GRAPHITE MICA. SAMPLE TO BE SUBMITTED FOR ARCHITECT'S APPROVAL.
- 1b ALUMINIUM COMPOSITE PANEL BY ALUCOBOND OR APPROVED EQUAL, COLOUR TO BE PURE WHITE. SAMPLE TO BE SUBMITTED FOR ARCHITECT'S APPROVAL.
- 2 INSULATED METAL PANELS BY KINGSPAN. COLOUR TO DRIFTWOOD (GREY). SAMPLE TO BE SUBMITTED FOR ARCHITECT'S APPROVAL.
- 3 INSULATED METAL PANELS BY KINGSPAN. COLOUR TO BE ZINC GREY MICRO-RIB. SAMPLE TO BE SUBMITTED FOR ARCHITECT'S APPROVAL.
- 4 THERMAL DOUBLE GLAZING (SOLAR GREY TINT) IN PREFINISHED ALUMINIUM CURTAIN WALL FRAMES.
- 5 SPANDREL GLAZING IN PREFINISHED ALUMINIUM CURTAIN WALL FRAMES. COLOUR OF SPANDREL: DARK GREY TINT TO MATCH INKAN 3-121-I.
- 6 ALUMINUM AND TEMPERED THERMAL GLASS DOOR(S) IN ALUMINUM CURTAIN WALL DOOR FRAMING SYSTEM. GLASS TO BE CLEAR. ALUMINUM COLOUR TO MATCH WINDOW GLAZING SYSTEM ALUMINUM COLOUR.
- 7 INSULATED HOLLOW METAL DOOR IN PRESSED STEEL THERMAL FRAME. DOOR AND FRAME PAINTED TO MATCH ADJACENT WALL COLOUR.
- 8 PREFINISHED METAL COPING. COLOUR TO MATCH ADJACENT MATERIAL DIRECTLY BELOW.
- 9 INSULATED HOLLOW METAL OVERHEAD DOOR C/W TEMPERED GLASS VIEW WINDOW. COLOUR TO BE GREY TO MATCH INSULATED METAL PANELS. C/W DOCK SEAL, DOCK LEVELLER AND DOCK BUMPERS.
- 10 INSULATED HOLLOW METAL OVERHEAD DOOR C/W TEMPERED GLASS VIEW WINDOW. COLOUR TO BE GREY TO MATCH INSULATED METAL PANELS.
- 11 PRECAST CONCRETE WITH AGGREGATE FINISH. COLOUR TO BE WHITE.
- 12 LIGHT FIXTURE, SEE ELECTRICAL DRAWINGS FOR MOUNTING HEIGHTS.

D:\222 - Fengate - 0 - Consult Drawings\01 - Current Drawings\222 - B - A-3.0.dwg

No.	ISSUED	DATE
1	ISSUED FOR CLIENT REVIEW	JULY 7, 2021
2	ISSUED FOR SPA	JULY 21, 2021
3	RE-SSUED FOR SPA	NOV. 5, 2021
4	RE-SSUED FOR SPA	MAR. 2, 2022

No.	REVISION	DATE

**BALDASSARRA**  
Architects Inc.

30 Great Gulf Drive, Unit 20 | Concord ON | L4K 0K7  
T: 905.660.0722 | [www.baldassarra.ca](http://www.baldassarra.ca)

OWNERS INFORMATION:  
LPF Realty Office Inc.



Fengate- Oakville

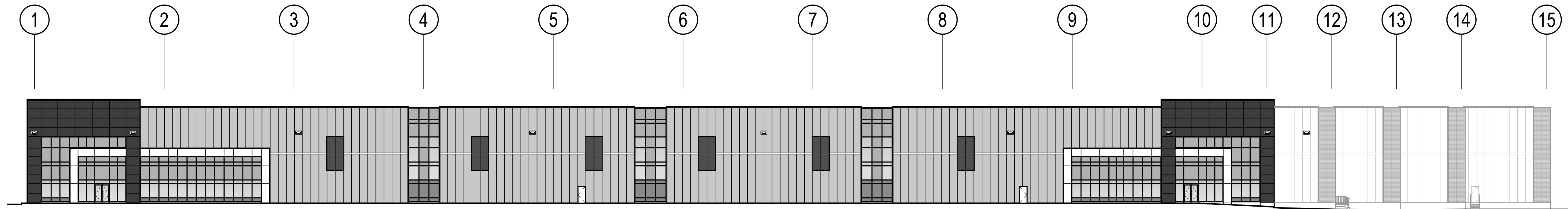
529 Great Lakes Boulevard  
Oakville, ON

Elevations  
Building 'B'

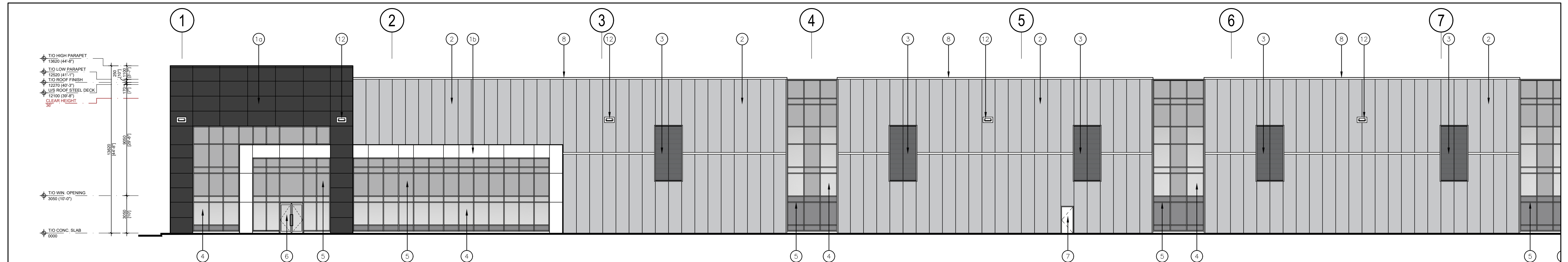
DATE:	DRAWN BY:	CHECKED:	SCALE:
JUL. 2021	DW/CI		AS NOTED
PROJECT No.	DRAWING No.		

22-21 B

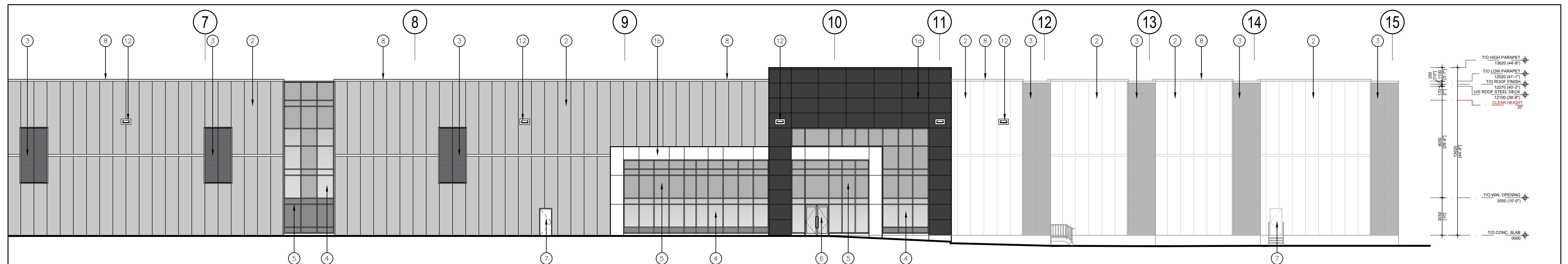
A-3.0B



1 Overall South Elevation  
A-3.0 Scale = 1:300



2 Partial South Elevation  
A-3.0 Scale = 1:150



3 Partial South Elevation  
A-3.0 Scale = 1:150

C:\223 - Fengate - Oakville Drawings\01 - Current Drawings\Bldg. C\223 - C A-3.0.dwg

No.	ISSUED	DATE
1	ISSUED FOR CLIENT REVIEW	JULY 7, 2021
2	ISSUED FOR SPA	JULY 21, 2021
3	RE-SSUED FOR SPA	NOV. 5, 2021
4	RE-SSUED FOR SPA	MAR. 2, 2022

No.	REVISION	DATE

**BALDASSARRA**  
Architects Inc.

30 Great Gulf Drive, Unit 20 | Concord ON | L4K 0K7  
T: 905.660.0722 | [www.baldassarra.ca](http://www.baldassarra.ca)

OWNERS INFORMATION:  
LPF Realty Office Inc.



Fengate- Oakville

499 Great Lakes Boulevard  
Oakville, ON

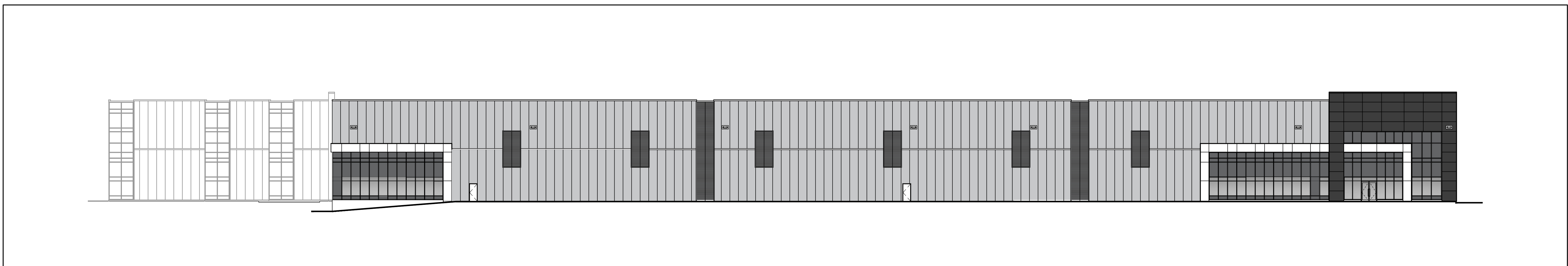
Elevations  
Building 'C'

DATE:	DRAWN BY:	CHECKED:	SCALE:
JUL. 2021	DW/CI		AS NOTED
PROJECT No.	DRAWING No.		

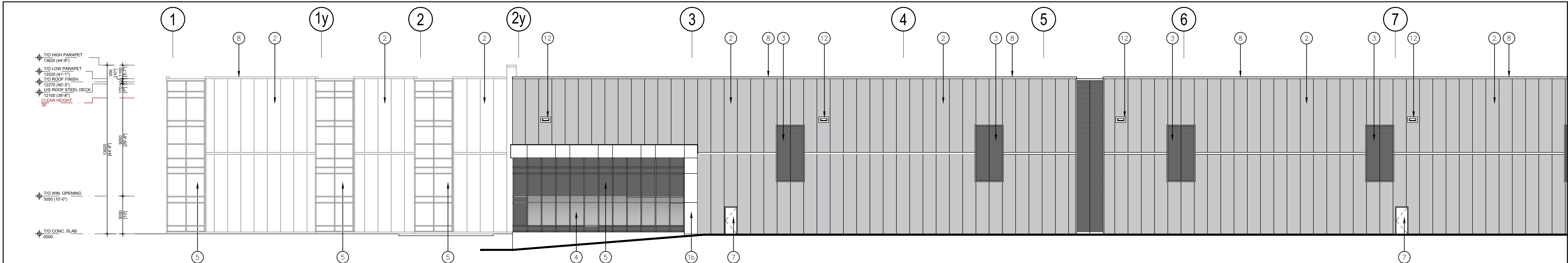
22-21 C

A-3.0C

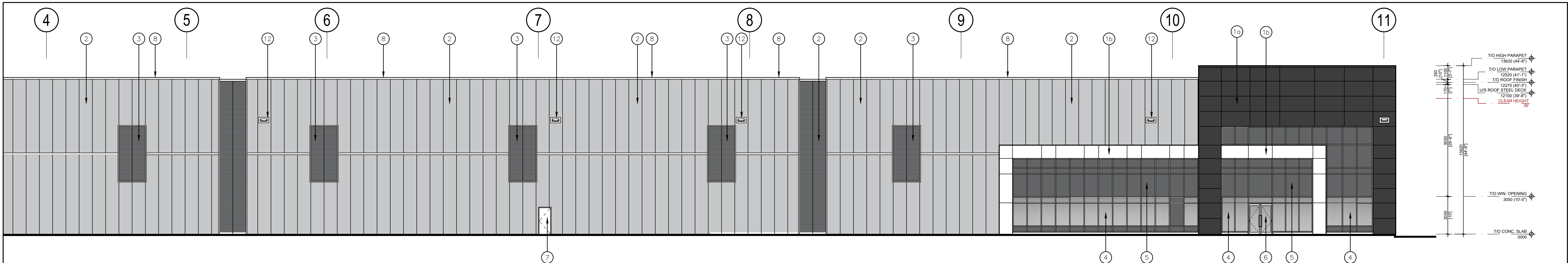




1 Overall Front Elevation (East)  
A-3.0 N.T.S.



2 Partial East Elevation  
A-3.0 1:150



3 Partial East Elevation  
A-3.0 1:150

D:\223 Fengate-0 Oakville Drawings\01 Current Drawings\Blind D\223 D A-3.0.dwg

No.	ISSUED	DATE
1	ISSUED FOR CLIENT REVIEW	JULY 7, 2021
2	ISSUED FOR SPA	JULY 21, 2021
3	RE-SSUED FOR SPA	NOV. 5, 2021
4	RE-SSUED FOR SPA	MAR. 2, 2022

No.	REVISION	DATE

BALDASSARRA  
Architects Inc.

30 Great Gulf Drive, Unit 20 | Concord ON | L4K 0K7  
T: 905.660.0722 | [www.baldassarra.ca](http://www.baldassarra.ca)  
OWNERS INFORMATION:  
LPF Realty Office Inc.



Fengate- Oakville

469 Great Lakes Boulevard  
Oakville, ON

Elevations  
Building 'D'

DATE:  
JUL. 2021

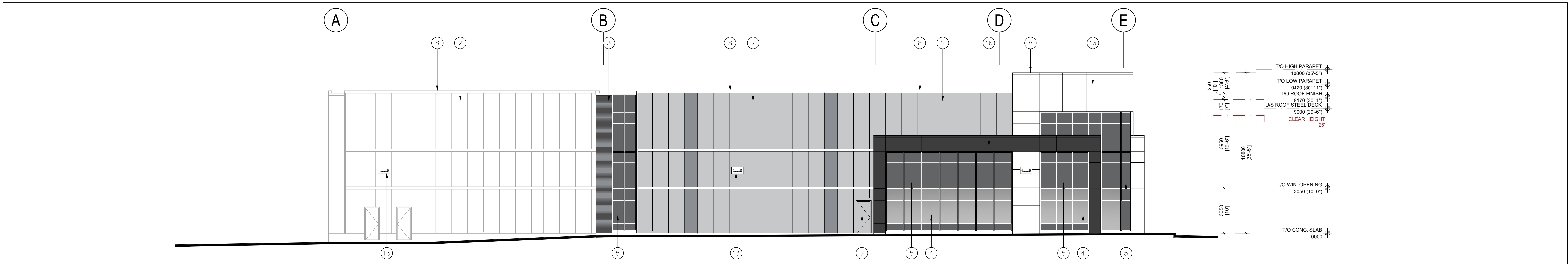
DRAWN BY:  
DW/CI

CHECKED:

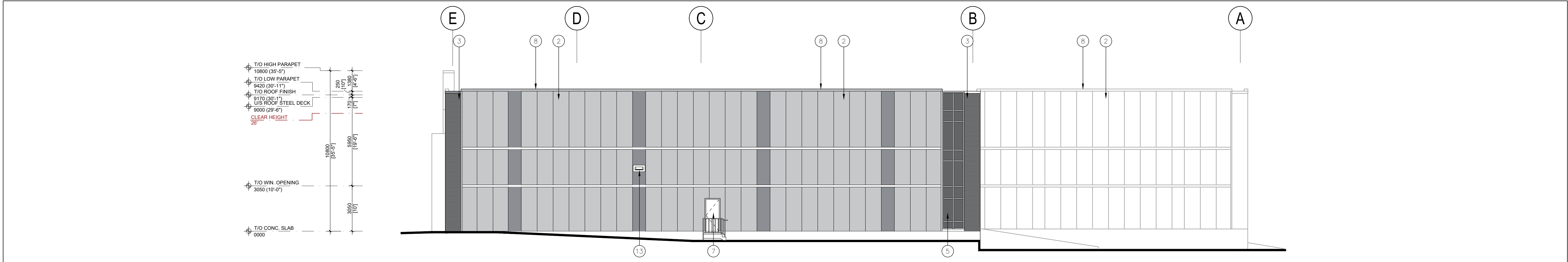
SCALE:  
AS NOTED

22-21 D

A-3.0D



1 West Elevation  
A-3.1 1:125



2 East Elevation  
A-3.1 1:125

- 10 ALUMINIUM COMPOSITE PANEL BY ALUCOBOND OR APPROVED EQUAL. COLOUR TO BE PURE WHITE. SAMPLE TO BE SUBMITTED FOR ARCHITECT'S APPROVAL.
- 11 ALUMINIUM COMPOSITE PANELS BY ALUCOBOND OR APPROVED EQUAL. COLOUR TO BE GRAPHITE MICA. SAMPLE TO BE SUBMITTED FOR ARCHITECT'S APPROVAL.
- 2 INSULATED METAL PANELS BY KINGSPAN. COLOUR TO DRIFTWOOD (GREY). SAMPLE TO BE SUBMITTED FOR ARCHITECT'S APPROVAL.
- 3 INSULATED METAL PANELS BY KINGSPAN. COLOUR TO BE ZINC GREY MICRO-RIB. SAMPLE TO BE SUBMITTED FOR ARCHITECT'S APPROVAL.
- 4 THERMAL DOUBLE GLAZING (SOLAR GREY TINT) IN PREFINISHED ALUMINIUM CURTAIN WALL FRAMES.
- 5 SPANDREL GLAZING IN PREFINISHED ALUMINIUM CURTAIN WALL FRAMES. COLOUR OF SPANDREL: DARK GREY TINT TO MATCH INKAN 3-121-1.
- 6 ALUMINIUM AND TEMPERED THERMAL GLASS DOOR(S) IN ALUMINIUM CURTAIN WALL DOOR FRAMING SYSTEM. GLASS TO BE CLEAR. ALUMINIUM COLOUR TO MATCH WINDOW GLAZING SYSTEM ALUMINIUM COLOUR.
- 7 INSULATED HOLLOW METAL DOOR IN PRESSED STEEL THERMAL FRAME. DOOR AND FRAME PAINTED TO MATCH ADJACENT WALL COLOUR.
- 8 PREFINISHED METAL COPING. COLOUR TO MATCH ADJACENT MATERIAL DIRECTLY BELOW.
- 9 INSULATED HOLLOW METAL OVERHEAD DOOR C/W TEMPERED GLASS VIEW WINDOW. COLOUR TO BE GREY TO MATCH INSULATED METAL PANELS. C/W DOCK SEAL, DOCK LEVELLER AND DOCK BUMPERS.
- 10 INSULATED HOLLOW METAL OVERHEAD DOOR C/W TEMPERED GLASS VIEW WINDOW. COLOUR TO BE GREY TO MATCH INSULATED METAL PANELS.
- 11 PRECAST CONCRETE WITH AGGREGATE FINISH. COLOUR TO BE WHITE.
- 12 SMOOTH RECESSED BAND(S). 10mm DEEP.
- 13 LIGHT FIXTURE. SEE ELECTRICAL DRAWINGS FOR MOUNTING HEIGHTS.

No.	ISSUED	DATE
1	ISSUED FOR CLIENT REVIEW	JULY 7, 2021
2	ISSUED FOR SPA	JULY 21, 2021
3	RE-SSUED FOR SPA	NOV. 5, 2021
4	RE-SSUED FOR SPA	MAR. 2, 2022

No.	REVISION	DATE

BALDASSARRA  
Architects Inc.

30 Great Gulf Drive, Unit 20 | Concord ON | L4K 0K7  
T: 905.660.0722 | [www.baldassarra.ca](http://www.baldassarra.ca)

OWNERS INFORMATION:  
LPF Realty Office Inc.



Fengate- Oakville

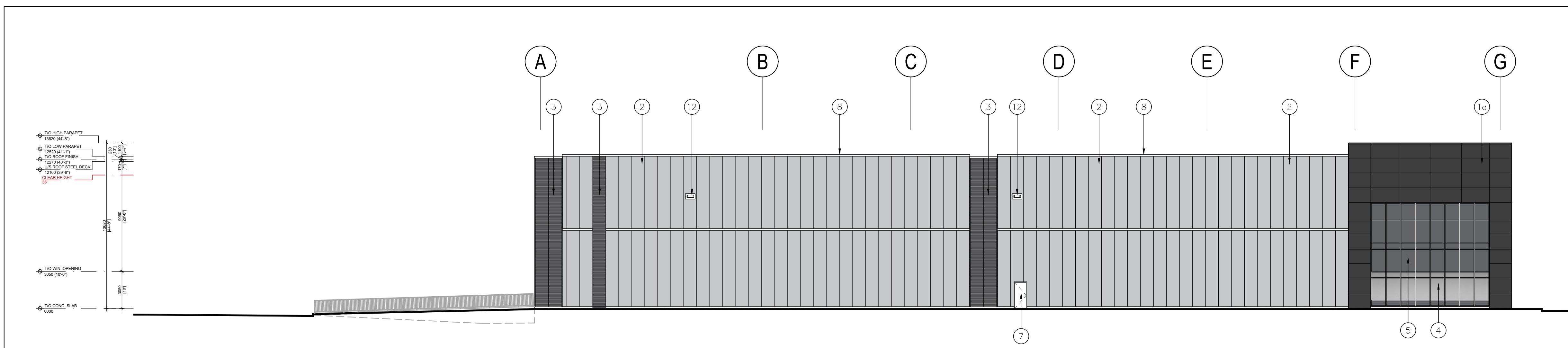
549 Great Lakes Boulevard  
Oakville, ON

Elevations  
Building 'A'

DATE:	DRAWN BY:	CHECKED:	SCALE:
JULY 2021	DW/HP		AS NOTED
PROJECT No.		DRAWING No.	

22-21 A

A-3.1A



1 West Elevation  
A-3.1  
1:200

- 1a ALUMINIUM COMPOSITE PANELS BY ALUCOBOND OR APPROVED EQUAL. COLOUR TO BE GRAPHITE MICA. SAMPLE TO BE SUBMITTED FOR ARCHITECT'S APPROVAL.
- 1b ALUMINIUM COMPOSITE PANEL BY ALUCOBOND OR APPROVED EQUAL, COLOUR TO BE PURE WHITE. SAMPLE TO BE SUBMITTED FOR ARCHITECT'S APPROVAL.
- 2 INSULATED METAL PANELS BY KINGSPAN. COLOUR TO DRIFTWOOD (GREY). SAMPLE TO BE SUBMITTED FOR ARCHITECT'S APPROVAL.
- 3 INSULATED METAL PANELS BY KINGSPAN. COLOUR TO BE ZINC GREY MICRO-RIB. SAMPLE TO BE SUBMITTED FOR ARCHITECT'S APPROVAL.
- 4 THERMAL DOUBLE GLAZING (SOLAR GREY TINT) IN PREFINISHED ALUMINIUM CURTAIN WALL FRAMES.
- 5 SPANDREL GLAZING IN PREFINISHED ALUMINIUM CURTAIN WALL FRAMES. COLOUR OF SPANDREL: DARK GREY TINT TO MATCH INKAN 3-121-I.
- 6 ALUMINUM AND TEMPERED THERMAL GLASS DOOR(S) IN ALUMINUM CURTAIN WALL DOOR FRAMING SYSTEM. GLASS TO BE CLEAR. ALUMINUM COLOUR TO MATCH WINDOW GLAZING SYSTEM ALUMINUM COLOUR.
- 7 INSULATED HOLLOW METAL DOOR IN PRESSED STEEL THERMAL FRAME. DOOR AND FRAME PAINTED TO MATCH ADJACENT WALL COLOUR.
- 8 PREFINISHED METAL COPING. COLOUR TO MATCH ADJACENT MATERIAL DIRECTLY BELOW.
- 9 INSULATED HOLLOW METAL OVERHEAD DOOR C/W TEMPERED GLASS VIEW WINDOW. COLOUR TO BE GREY TO MATCH INSULATED METAL PANELS. C/W DOCK SEAL, DOCK LEVELLER AND DOCK BUMPERS.
- 10 INSULATED HOLLOW METAL OVERHEAD DOOR C/W TEMPERED GLASS VIEW WINDOW. COLOUR TO BE GREY TO MATCH INSULATED METAL PANELS.
- 11 PRECAST CONCRETE WITH AGGREGATE FINISH. COLOUR TO BE WHITE.
- 12 LIGHT FIXTURE, SEE ELECTRICAL DRAWINGS FOR MOUNTING HEIGHTS.

C:\223 - Fengate - 0 - Consult Drawings\01 - Current Drawings\Bldg - B\223 - B - A-3.1.dwg

No.	ISSUED	DATE
1	ISSUED FOR CLIENT REVIEW	JULY 7, 2021
2	ISSUED FOR SPA	JULY 21, 2021
3	RE-SSUED FOR SPA	NOV. 5, 2021
4	RE-SSUED FOR SPA	MAR. 2, 2022

No.	REVISION	DATE

BALDASSARRA  
Architects Inc.

30 Great Gulf Drive, Unit 20 | Concord ON | L4K 0K7  
T: 905.660.0722 | [www.baldassarra.ca](http://www.baldassarra.ca)

OWNERS INFORMATION:  
LPF Realty Office Inc.



Fengate- Oakville

529 Great Lakes Boulevard  
Oakville, ON

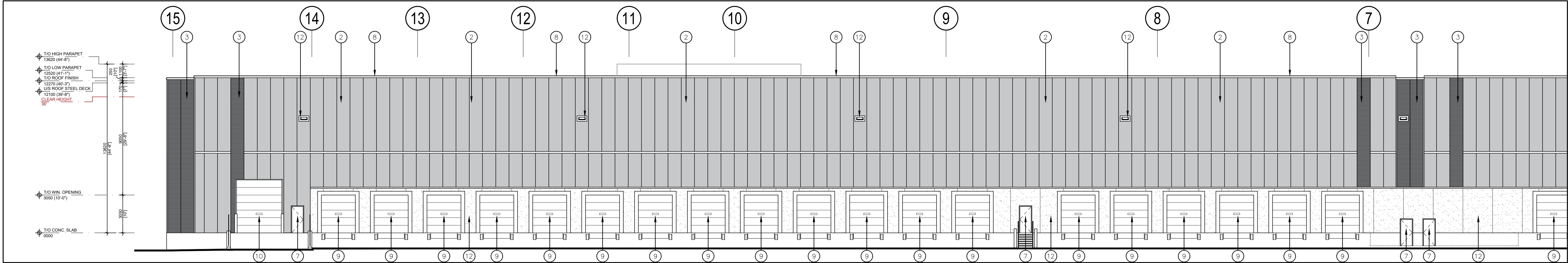
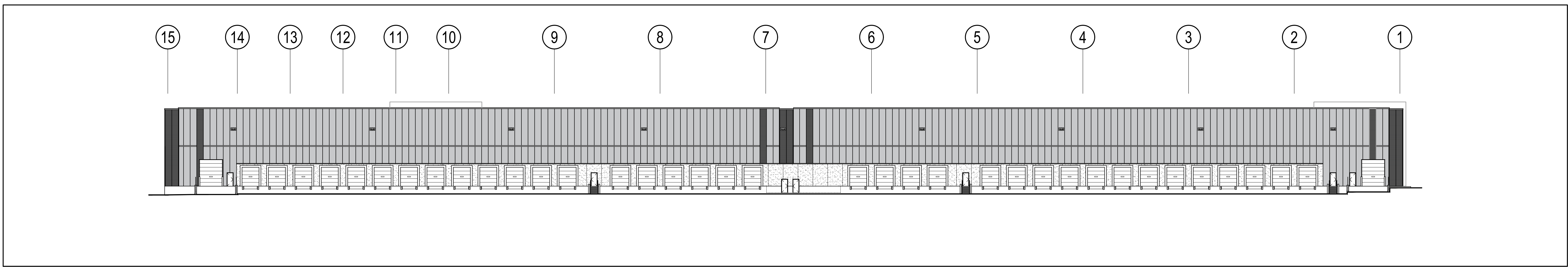
Elevations  
Building 'B'

DATE:	DRAWN BY:	CHECKED:	SCALE:
JUL. 2021	DW/CI		AS NOTED
PROJECT No.	DRAWING No.		

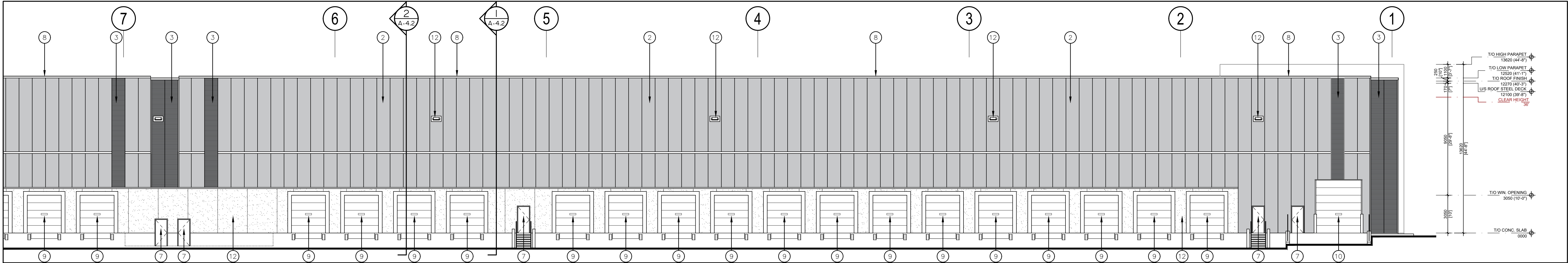
22-21 B

A-3.1B





1 Partial North Elevation  
A-3.1 1:150



2 Partial North Elevation  
A-3.1 1:150

C:\223 Fengate-0 Oakville Drawings\01 Current Drawings\Bldg\_C\223 C A-3.1.dwg

No.	ISSUED	DATE
1	ISSUED FOR CLIENT REVIEW	JULY 7, 2021
2	ISSUED FOR SPA	JULY 21, 2021
3	RE-SSUED FOR SPA	NOV. 5, 2021

No.	REVISION	DATE

**BALDASSARRA**  
Architects Inc.

30 Great Gulf Drive, Unit 20 | Concord ON | L4K 0K7  
T. 905.660.0722 | [www.baldassarra.ca](http://www.baldassarra.ca)

OWNERS INFORMATION:  
LPF Realty Office Inc.



Fengate- Oakville

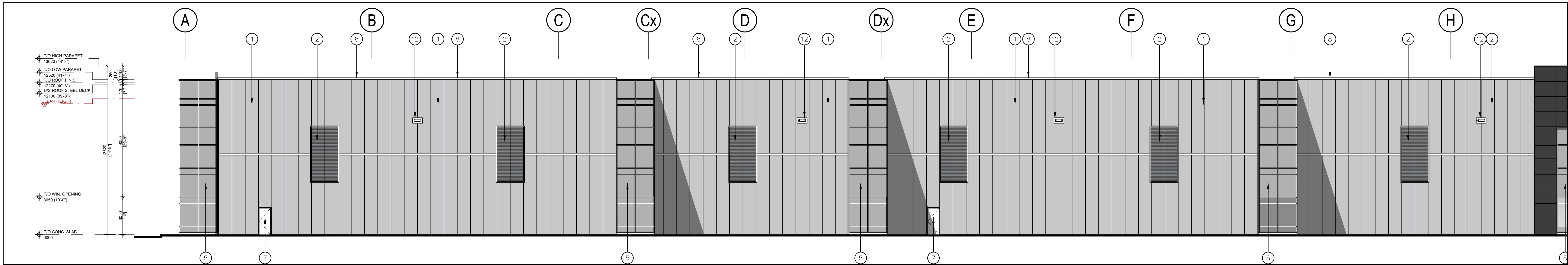
499 Great Lakes Boulevard  
Oakville, ON

Elevations  
Building 'C'

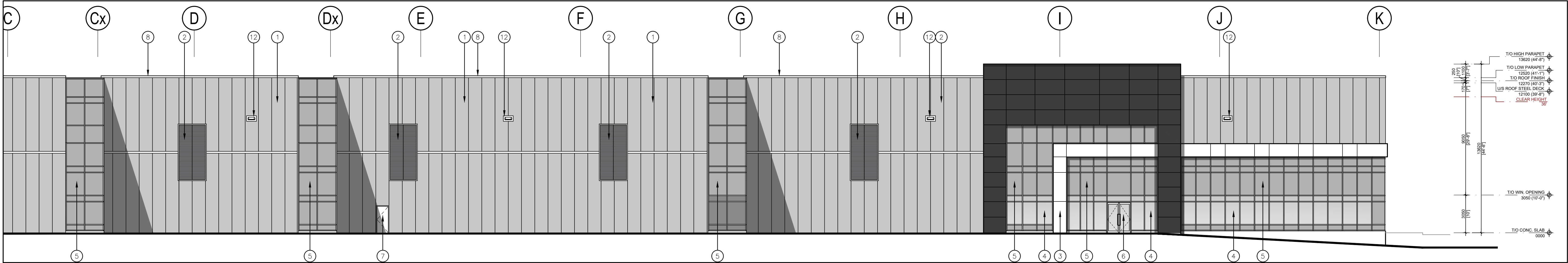
DATE:	DRAWN BY:	CHECKED:	SCALE:
JUL. 2021	DW/CI		AS NOTED
PROJECT No.	DRAWING No.		

22-21 C

A-3.1C



1 Partial South Elevation  
A-3.1 1:150



2 Partial South Elevation  
A-3.1 1:150

- 10 ALUMINIUM COMPOSITE PANELS BY ALUCOBOND OR APPROVED EQUAL. COLOUR TO BE GRAPHITE MICA. SAMPLE TO BE SUBMITTED FOR ARCHITECT'S APPROVAL.
- 10b ALUMINIUM COMPOSITE PANEL BY ALUCOBOND OR APPROVED EQUAL, COLOUR TO BE PURE WHITE. SAMPLE TO BE SUBMITTED FOR ARCHITECT'S APPROVAL.
- 2 INSULATED METAL PANELS BY KINGSPAN. COLOUR TO DRIFTWOOD (GREY). SAMPLE TO BE SUBMITTED FOR ARCHITECT'S APPROVAL.
- 3 INSULATED METAL PANELS BY KINGSPAN. COLOUR TO BE ZINC GREY MICRO-RIB. SAMPLE TO BE SUBMITTED FOR ARCHITECT'S APPROVAL.
- 4 THERMAL DOUBLE GLAZING (SOLAR GREY TINT) IN PREFINISHED ALUMINIUM CURTAIN WALL FRAMES.
- 5 SPANDREL GLAZING IN PREFINISHED ALUMINIUM CURTAIN WALL FRAMES. COLOUR OF SPANDREL: DARK GREY TINT TO MATCH INKAN 3-121-1.
- 6 ALUMINUM AND TEMPERED THERMAL GLASS DOOR(S) IN ALUMINUM CURTAIN WALL DOOR FRAMING SYSTEM. GLASS TO BE CLEAR. ALUMINUM COLOUR TO MATCH WINDOW GLAZING SYSTEM ALUMINUM COLOUR.
- 7 INSULATED HOLLOW METAL DOOR IN PRESSED STEEL THERMAL FRAME. DOOR AND FRAME PAINTED TO MATCH ADJACENT WALL COLOUR.
- 8 PREFINISHED METAL COPING. COLOUR TO MATCH ADJACENT MATERIAL DIRECTLY BELOW.
- 9 INSULATED HOLLOW METAL OVERHEAD DOOR C/W TEMPERED GLASS VIEW WINDOW. COLOUR TO BE GREY TO MATCH INSULATED METAL PANELS. C/W DOCK SEAL, DOCK LEVELLER AND DOCK BUMPERS.
- 10 INSULATED HOLLOW METAL OVERHEAD DOOR C/W TEMPERED GLASS VIEW WINDOW. COLOUR TO BE GREY TO MATCH INSULATED METAL PANELS.
- 11 PRECAST CONCRETE WITH AGGREGATE FINISH. COLOUR TO BE WHITE.
- 12 LIGHT FIXTURE. SEE ELECTRICAL DRAWINGS FOR MOUNTING HEIGHTS.

D:\2221 Fengate-0 Oakville\Drawings\01 Current Drawings\2221 D A-3.1.dwg

No.	ISSUED	DATE
1	ISSUED FOR CLIENT REVIEW	JULY 7, 2021
2	ISSUED FOR SPA	JULY 21, 2021
3	RE-SSUED FOR SPA	NOV. 5, 2021
4	RE-SSUED FOR SPA	MAR. 2, 2022

No.	REVISION	DATE

BALDASSARRA  
Architects Inc.

30 Great Gulf Drive, Unit 20 | Concord ON | L4K 0K7  
T: 905.660.0722 | [www.baldassarra.ca](http://www.baldassarra.ca)  
OWNERS INFORMATION:  
LPF Realty Office Inc.



Fengate- Oakville

469 Great Lakes Boulevard  
Oakville, ON

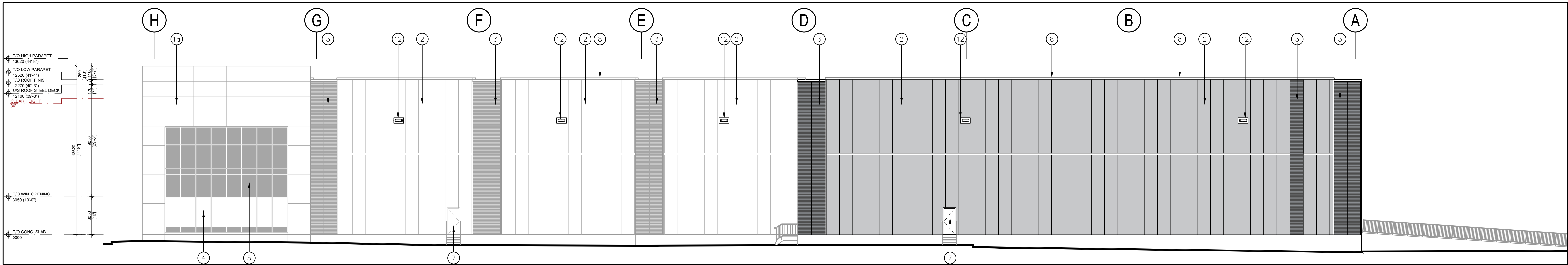
Elevations  
Building 'D'

DATE:	DRAWN BY:	CHECKED:	SCALE:
JUL. 2021	DW/CI		AS NOTED
PROJECT No.	DRAWING No.		

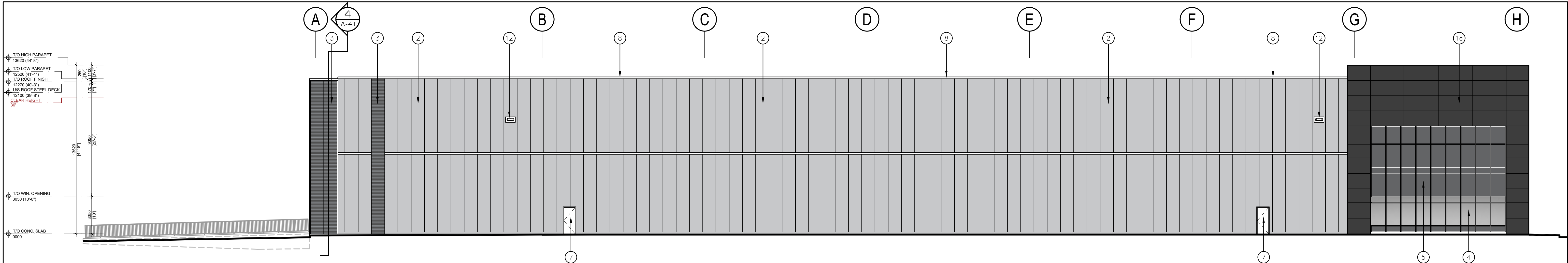
22-21 D

A-3.1D





1 East Elevation  
A-3.2 1:150



2 West Elevation  
A-3.2 1:150

- 1a ALUMINIUM COMPOSITE PANELS BY ALUCOBOND OR APPROVED EQUAL. COLOUR TO BE GRAPHITE MICA. SAMPLE TO BE SUBMITTED FOR ARCHITECT'S APPROVAL.
- 1b ALUMINIUM COMPOSITE PANEL BY ALUCOBOND OR APPROVED EQUAL, COLOUR TO BE PURE WHITE. SAMPLE TO BE SUBMITTED FOR ARCHITECT'S APPROVAL.
- 2 INSULATED METAL PANELS BY KINGSPAN. COLOUR TO DRIFTWOOD (GREY). SAMPLE TO BE SUBMITTED FOR ARCHITECT'S APPROVAL.
- 3 INSULATED METAL PANELS BY KINGSPAN. COLOUR TO BE ZINC GREY MICRO-RIB. SAMPLE TO BE SUBMITTED FOR ARCHITECT'S APPROVAL.
- 4 THERMAL DOUBLE GLAZING (SOLAR GREY TINT) IN PREFINISHED ALUMINIUM CURTAIN WALL FRAMES.
- 5 SPANDREL GLAZING IN PREFINISHED ALUMINIUM CURTAIN WALL FRAMES. COLOUR OF SPANDREL: DARK GREY TINT TO MATCH INKAN 3-121-1.
- 6 ALUMINUM AND TEMPERED THERMAL GLASS DOOR(S) IN ALUMINUM CURTAIN WALL DOOR FRAMING SYSTEM. GLASS TO BE CLEAR. ALUMINUM COLOUR TO MATCH WINDOW GLAZING SYSTEM ALUMINUM COLOUR.
- 7 INSULATED HOLLOW METAL DOOR IN PRESSED STEEL THERMAL FRAME. DOOR AND FRAME PAINTED TO MATCH ADJACENT WALL COLOUR.
- 8 PREFINISHED METAL COPING. COLOUR TO MATCH ADJACENT MATERIAL DIRECTLY BELOW.
- 9 INSULATED HOLLOW METAL OVERHEAD DOOR C/W TEMPERED GLASS VIEW WINDOW. COLOUR TO BE GREY TO MATCH INSULATED METAL PANELS. C/W DOCK SEAL, DOCK LEVELLER AND DOCK BUMPERS.
- 10 INSULATED HOLLOW METAL OVERHEAD DOOR C/W TEMPERED GLASS VIEW WINDOW. COLOUR TO BE GREY TO MATCH INSULATED METAL PANELS.
- 11 PRECAST CONCRETE WITH AGGREGATE FINISH. COLOUR TO BE WHITE.
- 12 LIGHT FIXTURE, SEE ELECTRICAL DRAWINGS FOR MOUNTING HEIGHTS.

C:\2221\_Fengate-0\_Oakville\Drawings\01\_Current Drawings\Bldg. C\2221\_C A-3.2.dwg

No.	ISSUED	DATE
1	ISSUED FOR CLIENT REVIEW	JULY 7, 2021
2	ISSUED FOR SPA	JULY 21, 2021
3	RE-SSUED FOR SPA	NOV. 5, 2021
4	RE-SSUED FOR SPA	MAR. 2, 2022

No.	REVISION	DATE

BALDASSARRA  
Architects Inc.

30 Great Gulf Drive, Unit 20 | Concord ON | L4K 0K7  
T: 905.660.0722 | [www.baldassarra.ca](http://www.baldassarra.ca)

OWNERS INFORMATION:  
LPF Realty Office Inc.



Fengate- Oakville

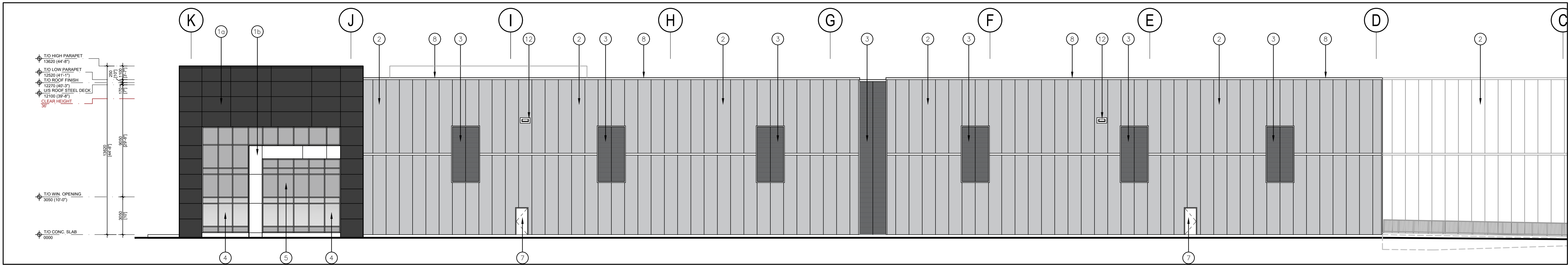
499 Great Lakes Boulevard  
Oakville, ON

Elevations  
Building 'C'

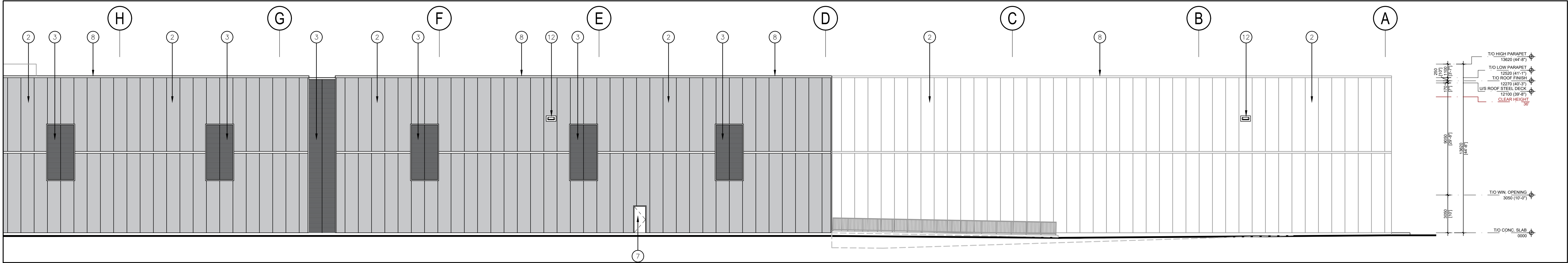
DATE:	DRAWN BY:	CHECKED:	SCALE:
JUL. 2021	DW/CI		AS NOTED
PROJECT No.	DRAWING No.		

22-21 C

A-3.2C



1 Partial North Elevation  
A-3.2 1:150



2 Partial North Elevation  
A-3.2 1:150

- 1a ALUMINIUM COMPOSITE PANELS BY ALUCOBOND OR APPROVED EQUAL. COLOUR TO BE GRAPHITE MICA. SAMPLE TO BE SUBMITTED FOR ARCHITECT'S APPROVAL.
- 1b ALUMINIUM COMPOSITE PANEL BY ALUCOBOND OR APPROVED EQUAL, COLOUR TO BE PURE WHITE. SAMPLE TO BE SUBMITTED FOR ARCHITECT'S APPROVAL.
- 2 INSULATED METAL PANELS BY KINGSPAN. COLOUR TO DRIFTWOOD (GREY). SAMPLE TO BE SUBMITTED FOR ARCHITECT'S APPROVAL.
- 3 INSULATED METAL PANELS BY KINGSPAN. COLOUR TO BE ZINC GREY MICRO-RIB. SAMPLE TO BE SUBMITTED FOR ARCHITECT'S APPROVAL.
- 4 THERMAL DOUBLE GLAZING (SOLAR GREY TINT) IN PREFINISHED ALUMINIUM CURTAIN WALL FRAMES.
- 5 SPANDREL GLAZING IN PREFINISHED ALUMINIUM CURTAIN WALL FRAMES. COLOUR OF SPANDREL: DARK GREY TINT TO MATCH INKAN 3-121-I.
- 6 ALUMINUM AND TEMPERED THERMAL GLASS DOOR(S) IN ALUMINUM CURTAIN WALL DOOR FRAMING SYSTEM. GLASS TO BE CLEAR. ALUMINUM COLOUR TO MATCH WINDOW GLAZING SYSTEM ALUMINUM COLOUR.
- 7 INSULATED HOLLOW METAL DOOR IN PRESSED STEEL THERMAL FRAME. DOOR AND FRAME PAINTED TO MATCH ADJACENT WALL COLOUR.
- 8 PREFINISHED METAL COPING. COLOUR TO MATCH ADJACENT MATERIAL DIRECTLY BELOW.
- 9 INSULATED HOLLOW METAL OVERHEAD DOOR C/W TEMPERED GLASS VIEW WINDOW. COLOUR TO BE GREY TO MATCH INSULATED METAL PANELS. C/W DOCK SEAL, DOCK LEVELLER AND DOCK BUMPERS.
- 10 INSULATED HOLLOW METAL OVERHEAD DOOR C/W TEMPERED GLASS VIEW WINDOW. COLOUR TO BE GREY TO MATCH INSULATED METAL PANELS.
- 11 PRECAST CONCRETE WITH AGGREGATE FINISH. COLOUR TO BE WHITE.
- 12 LIGHT FIXTURE. SEE ELECTRICAL DRAWINGS FOR MOUNTING HEIGHTS.

D:\2221 Fengate-0 Oakville Drawings\01 Current Drawings\2221 D A-3.2.dwg

No.	ISSUED	DATE
1	ISSUED FOR CLIENT REVIEW	JULY 7, 2021
2	ISSUED FOR SPA	JULY 21, 2021
3	RE-SSUED FOR SPA	NOV. 5, 2021
4	RE-SSUED FOR SPA	MAR. 2, 2022

No.	REVISION	DATE

BALDASSARRA  
Architects Inc.

30 Great Gulf Drive, Unit 20 | Concord ON | L4K 0K7  
T: 905.660.0722 | [www.baldassarra.ca](http://www.baldassarra.ca)

OWNERS INFORMATION:  
LPF Realty Office Inc.



Fengate- Oakville

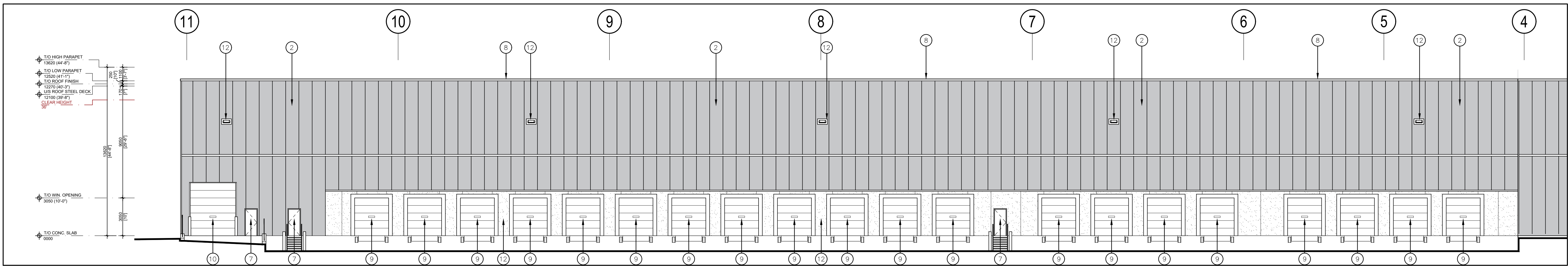
469 Great Lakes Boulevard  
Oakville, ON

Elevations  
Building 'D'

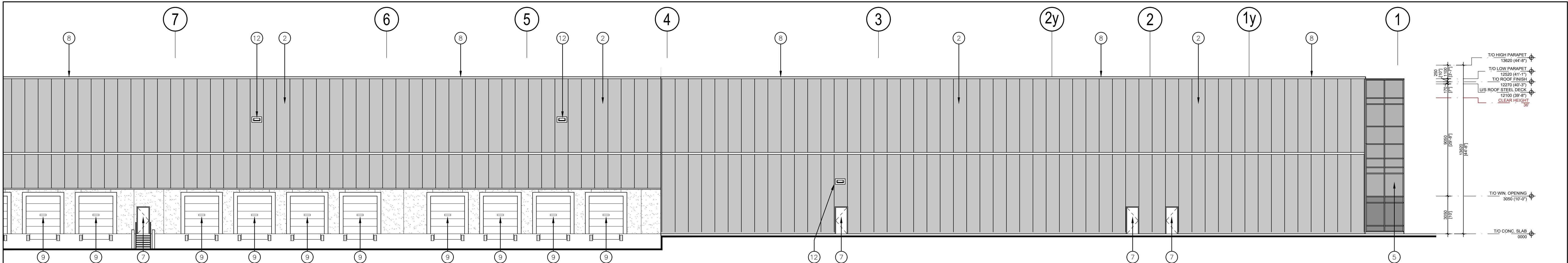
DATE:	DRAWN BY:	CHECKED:	SCALE:
JUL. 2021	DW/CI		AS NOTED
PROJECT No.	DRAWING No.		

22-21 D

A-3.2D



1 Partial West Elevation  
A-3.3 1:150



2 Partial West Elevation  
A-3.3 1:150

- 1a ALUMINIUM COMPOSITE PANELS BY ALUCOBOND OR APPROVED EQUAL. COLOUR TO BE GRAPHITE MICA. SAMPLE TO BE SUBMITTED FOR ARCHITECT'S APPROVAL.
- 1b ALUMINIUM COMPOSITE PANEL BY ALUCOBOND OR APPROVED EQUAL, COLOUR TO BE PURE WHITE. SAMPLE TO BE SUBMITTED FOR ARCHITECT'S APPROVAL.
- 2 INSULATED METAL PANELS BY KINGSPAN. COLOUR TO DRIFTWOOD (GREY). SAMPLE TO BE SUBMITTED FOR ARCHITECT'S APPROVAL.
- 3 INSULATED METAL PANELS BY KINGSPAN. COLOUR TO BE ZINC GREY MICRO-RIB. SAMPLE TO BE SUBMITTED FOR ARCHITECT'S APPROVAL.
- 4 THERMAL DOUBLE GLAZING (SOLAR GREY TINT) IN PREFINISHED ALUMINIUM CURTAIN WALL FRAMES.
- 5 SPANDREL GLAZING IN PREFINISHED ALUMINIUM CURTAIN WALL FRAMES. COLOUR OF SPANDREL: DARK GREY TINT TO MATCH INKAN 3-121-1.
- 6 ALUMINUM AND TEMPERED THERMAL GLASS DOOR(S) IN ALUMINUM CURTAIN WALL DOOR FRAMING SYSTEM. GLASS TO BE CLEAR. ALUMINUM COLOUR TO MATCH WINDOW GLAZING SYSTEM ALUMINUM COLOUR.
- 7 INSULATED HOLLOW METAL DOOR IN PRESSED STEEL THERMAL FRAME. DOOR AND FRAME PAINTED TO MATCH ADJACENT WALL COLOUR.
- 8 PREFINISHED METAL COPING. COLOUR TO MATCH ADJACENT MATERIAL DIRECTLY BELOW.
- 9 INSULATED HOLLOW METAL OVERHEAD DOOR C/W TEMPERED GLASS VIEW WINDOW. COLOUR TO BE GREY TO MATCH INSULATED METAL PANELS. C/W DOCK SEAL, DOCK LEVELLER AND DOCK BUMPERS.
- 10 INSULATED HOLLOW METAL OVERHEAD DOOR C/W TEMPERED GLASS VIEW WINDOW. COLOUR TO BE GREY TO MATCH INSULATED METAL PANELS.
- 11 PRECAST CONCRETE WITH AGGREGATE FINISH. COLOUR TO BE WHITE.
- 12 LIGHT FIXTURE. SEE ELECTRICAL DRAWINGS FOR MOUNTING HEIGHTS.

D:\2221 Fengate - Oakville Drawings\01 Current Drawings\2221 D A-3.3.dwg

No.	ISSUED	DATE
1	ISSUED FOR CLIENT REVIEW	JULY 7, 2021
2	ISSUED FOR SPA	JULY 21, 2021
3	RE-SSUED FOR SPA	NOV. 5, 2021
4	RE-SSUED FOR SPA	MAR. 2, 2022

No.	REVISION	DATE

BALDASSARRA  
Architects Inc.

30 Great Gulf Drive, Unit 20 | Concord ON | L4K 0K7  
T: 905.660.0722 | [www.baldassarra.ca](http://www.baldassarra.ca)

OWNERS INFORMATION:



Fengate- Oakville

469 Great Lakes Boulevard  
Oakville, ON

Elevations  
Building 'D'

DATE:	DRAWN BY:	CHECKED:	SCALE:
JUL. 2021	DW/CI		AS NOTED
PROJECT No.	DRAWING No.		

22-21 D

A-3.3D