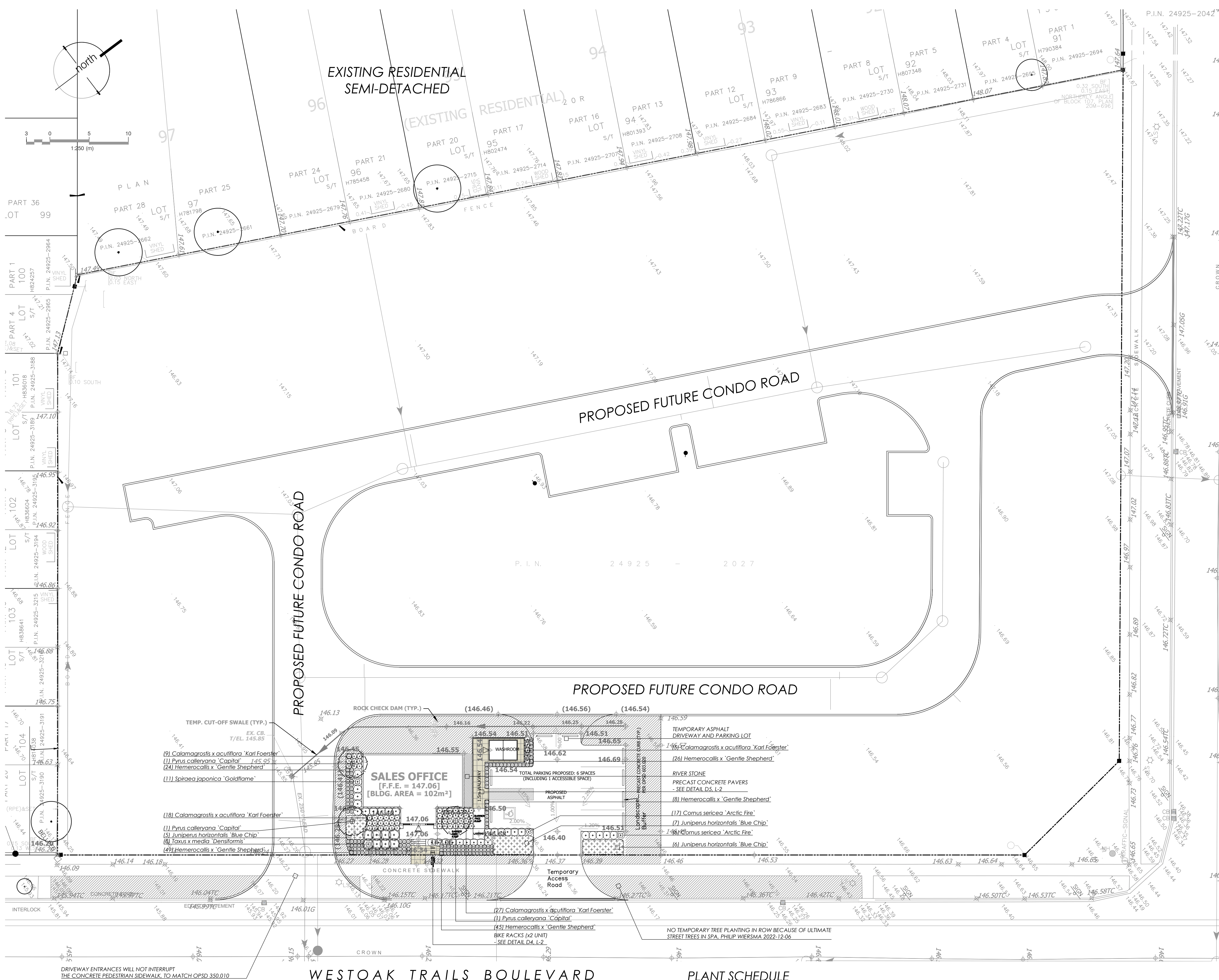


EXISTING RESIDENTIAL SEMI-DETACHED



WESTOAK TRAILS BOULEVARD

POSTMASTER DRIVE

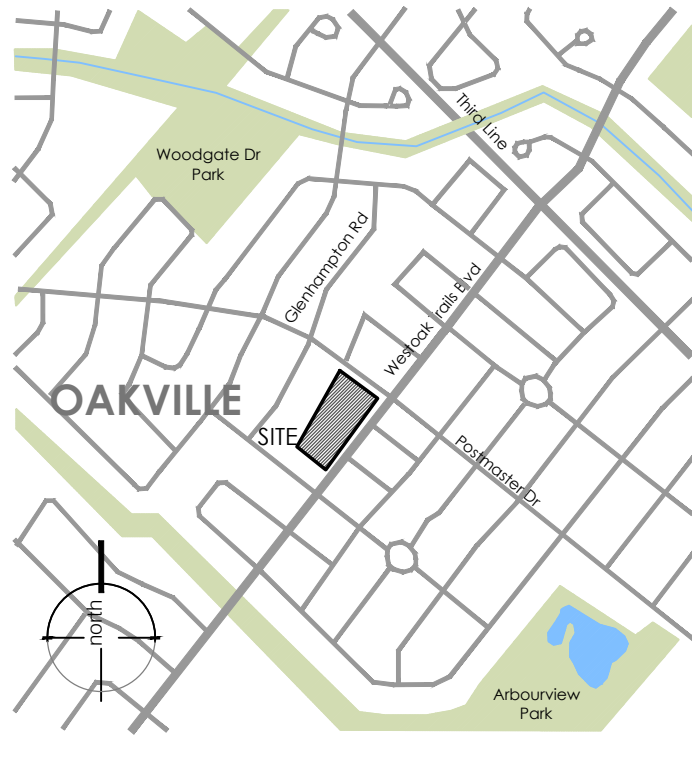
PLANT SCHEDULE

TREES	BOTANICAL NAME	COMMON NAME	SIZE	COND.	MATURE HT. (M)	MATURE SPR. (M)	O.C. (M)	REMARKS
3	<i>Pyrus calleryana</i> 'Capital'	Capital Ornamental Pear	60mm Cal.	W.B.	10.0	4.0	As Shown	
SHRUBS	BOTANICAL NAME	COMMON NAME	SIZE	COND.	MATURE HT. (M)	MATURE SPR. (M)	O.C. (M)	REMARKS
23	<i>Comus sericea</i> 'Arctic Fire'	Arctic Fire Dogwood	60cm	#3 cont.	1.0	1.0	0.80	
11	<i>Spiraea japonica</i> 'Goldflame'	Goldflame Spirea	40cm	#3 cont.	0.90	1.1	0.90	
8	<i>Taxus x media</i> 'Densaformis'	Dense Yew	40cm	#3 cont.	1.25	1.5	1.25	
GRASSES	BOTANICAL NAME	COMMON NAME	SIZE	COND.	MATURE HT. (M)	MATURE SPR. (M)	O.C. (M)	REMARKS
59	<i>Calamagrostis x acutiflora</i> 'Karl Foerster'	Karl Foerster Feather Reed Grass	-	#1 cont.	1.25	0.60	0.50	
PERENNIALS	BOTANICAL NAME	COMMON NAME	SIZE	COND.	MATURE HT. (M)	MATURE SPR. (M)	O.C. (M)	REMARKS
152	<i>Hemerocallis x 'Gentle Shepherd'</i>	Gentle Shepherd Daylily	-	#1 cont.	0.70	0.50	0.40	
GROUND COVERS	BOTANICAL NAME	COMMON NAME	SIZE	COND.	MATURE HT. (M)	MATURE SPR. (M)	O.C. (M)	REMARKS
18	<i>Juniperus horizontalis</i> 'Blue Chip'	Blue Chip Juniper	40cm	#3 cont.	0.20	1.5	1.25	

LANDSCAPE NOTES:

- All work to be carried out in accordance with by-laws and codes having jurisdiction over site location.
- Complete all work to the satisfaction of the Landscape Architect.
- Report any changes, discrepancies or substitutions to the Landscape Architect for review. Obtain approval from the Landscape Architect before proceeding.
- It is the contractor's responsibility to determine existing service locations.
- Exact locations of plant material will be determined by placement of site services such as hydro vaults, meters, utilities roof rain water leaders, driveways, light standards, etc.
- All plant material locations to be staked or marked out and approved by Landscape Architect prior to installation.
- Supply all plant material in accordance with the Canadian Standards for Nursery Stock (8th ed.).
- Install plant material according to details shown.
- Supply and place mulch in accordance with Canadian Landscape Standard (Section 10, Mulching). Disturbed soil areas around trees and shrubs are to be covered with shredded conifer bark mulch such as 'Cedar Bark Mulch' by All Treat Farms or 'Classic Cedar Mulch' by Gro-Bark, or approved equivalent. Alternative mulches must be approved by the Landscape Architect.
- Contractor to utilize layout dimensions where provided.
- Provide planting bed area as noted on the drawing or to accommodate mature size of plant material.
- All support systems must be removed by the contractor at time of final acceptance. No extras will be paid to complete this work.
- Supply and place sod in accordance with Canadian Landscape Standard (Section 4, Grading & Drainage and Section 6, Growing Medium) to a minimum depth of 150mm unless otherwise specified.
- Supply and place sod in accordance with Canadian Landscape Standard (Section 7, Lawns & Grass and Section 8, Turfgrass Sod) unless otherwise specified.
- Supply and place seed in accordance with Canadian Landscape Standard (Section 4, Grading & Drainage and Section 6, Growing Medium) unless otherwise specified. All S:1 or greater slopes to be seeded with topsoil. Contractor to provide necessary erosion control protection as required to ensure soil stabilization and proper seed germination.
- All dimensions in meters unless otherwise noted.
- If discrepancies arise between plant material count shown on drawing and plant list, the drawing shall be considered correct.
- Contractor to provide minimum one (1) year warranty (including trees on municipal property) from date accepted on all work unless otherwise specified.
- Any site plan or grading and servicing shown is for information only. Refer to approved drawings.
- Not for construction unless stamped, signed and dated by Landscape Architect.
- Approval of landscape plan to be obtained from municipality.
- All plant material to be planted a minimum of 1.0m from any swales or ditches.
- For grading and servicing information refer to the consulting Engineer's drawings.
- For lighting information and power distribution refer to the electrical consultant's drawings.

KEY MAP - N.T.S.



LEGEND

- property line
- proposed deciduous tree
- proposed shrub
- proposed perennial
- existing elevation
- min. 150mm topsoil, fine grade & sod
- precast concrete pavers
- 146.69 proposed elevation

NOT FOR CONSTRUCTION
ISSUED FOR REVIEW & COMMENTS ONLY

REVISIONS/ SUBMISSIONS

#	DATE	DESCRIPTION
1	2022-08-03	Issued for Submission
2	2022-09-19	Issued for Submission
3	2022-10-04	Issued for Submission
4	2022-10-20	Issued for Review
5	2022-10-26	Issued for Submission
6	2023-01-03	Issued for Submission

STAMP



CLIENT
Branthaven Development

MUNICIPALITY
Town of Oakville

PROJECT
Condominium Sales Centre

MUNICIPAL FILE NUMBER

SHEET
Sales Centre
Landscape Plan

L-1

adesso design inc.
landscape architecture

218 Locke Street South, 2nd Floor
Hamilton, ON L8P 4B4
t. 905.526.8876
www.adessodesigninc.ca

DATE: 2023-01-03 10:58 AM
DRAWN BY: J. B. B. (JBB)
CHECKED BY: J. B. B. (JBB)
DATE: 2023-01-03 10:58 AM
DRAWN BY: J. B. B. (JBB)
CHECKED BY: J. B. B. (JBB)

