

- LEGEND**
- property line
 - vegetation unit (refer to chart)
 - existing tree number (refer to chart)
 - existing vegetation to remain
 - existing vegetation to be removed
 - existing dead vegetation
 - existing elevations
 - tree protection barrier - see detail D1, L-2

NOT FOR CONSTRUCTION
ISSUED FOR REVIEW & COMMENTS ONLY

NOTE:
Vegetation inventory undertaken by Jeremy Jackson, ISA Certified Arborist (ON-1089A) on March 14, 2024.

REVISIONS/ SUBMISSIONS

#	DATE	DESCRIPTION
1	2024-11-06	Issued for OPA/ZBA 1
2	2026-03-13	Issued for OPA/ZBA 2



CLIENT
Neatt Communities
MUNICIPALITY
Town of Oakville

PROJECT
3056 Neyagawa Boulevard

MUNICIPAL FILE NUMBER

SHEET
Tree Protection Plan **L-1**



69 John Street South, Suite 250
Hamilton, ON L8N 2B9
T. 905.526.8876
e. info@adessodesigninc.ca
www.adessodesigninc.ca

EXISTING VEGETATION IDENTIFICATION TABLE

Table with columns: Tree #, Common Name, Scientific Name, DBH, TI, CS, CV, DL, mPZ, CC, CRZ, Comments, Potential Impact from Construction, Recommendation, Ownership. Rows 1-120.

Table with columns: Tree #, Common Name, Scientific Name, DBH, TI, CS, CV, DL, mPZ, CC, CRZ, Comments, Potential Impact from Construction, Recommendation, Ownership. Rows 121-241.

NOT FOR CONSTRUCTION
ISSUED FOR REVIEW & COMMENTS ONLY

NOTE:
Vegetation inventory undertaken by Jeremy Jackson, ISA Certified Arborist (ON-1089A) on March 14, 2024.

Table with columns: #, DATE, DESCRIPTION. Revisions/Submissions log.



CLIENT: Neatt Communities
MUNICIPALITY: Town of Oakville

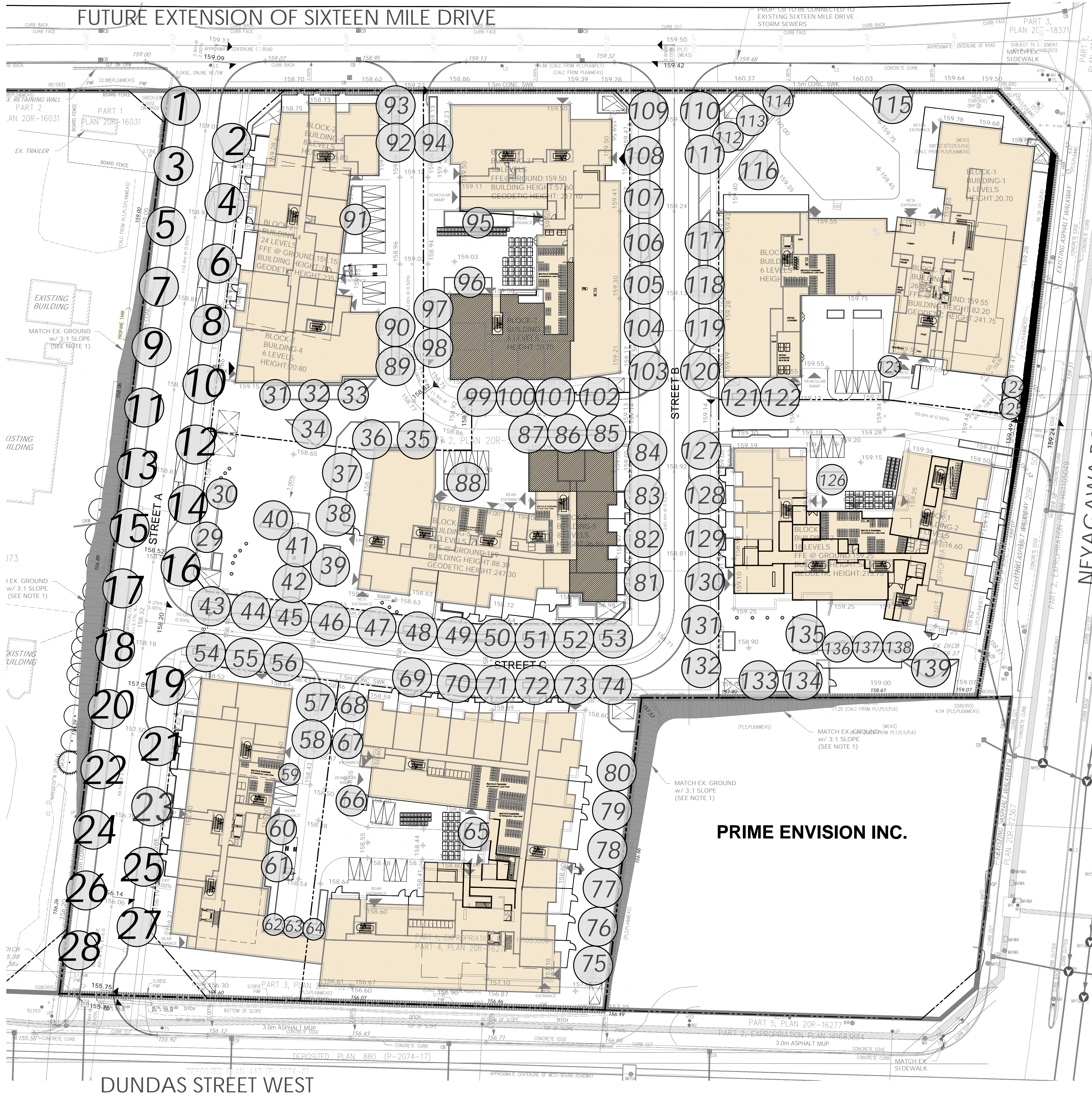
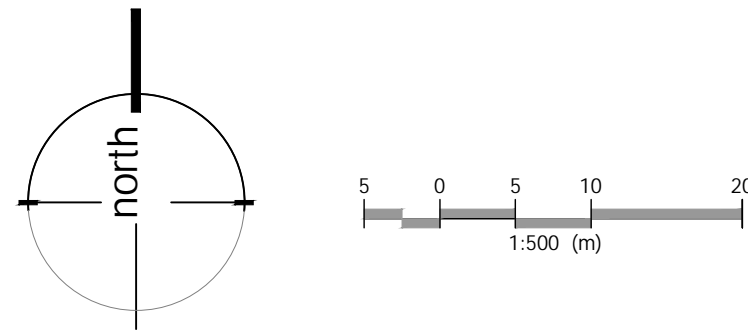
PROJECT: 3056 Neyagawa Boulevard

MUNICIPAL FILE NUMBER

SHEET: Tree Protection Plan

EXISTING VEGETATION IDENTIFICATION TABLE

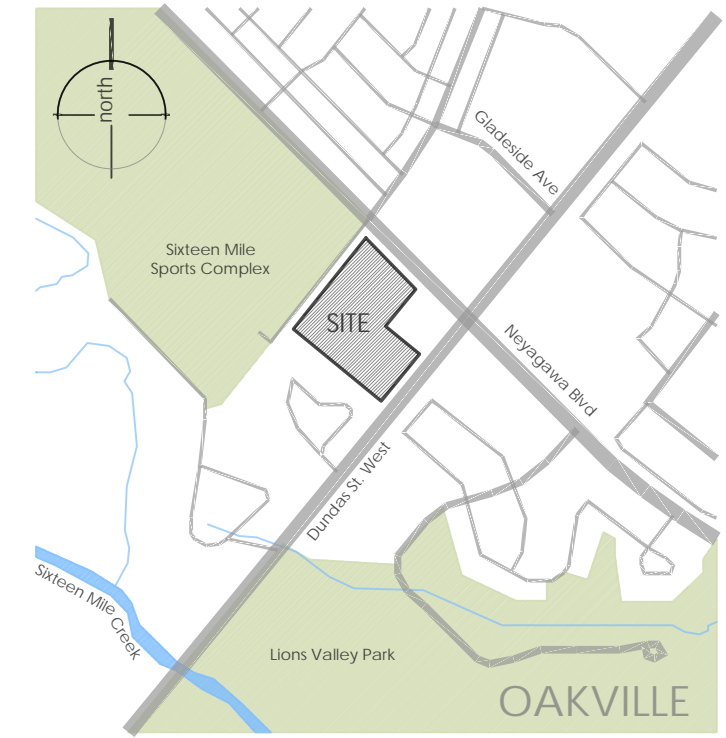
Tree #	Common Name	Scientific Name	DBH	T	CS	CV	DL	mIPZ	CC	CRZ	Comments	Potential Impact from Construction	Recommendation	Ownership
242	White Spruce	Picea glauca	10	G	G	G	2	2	CD			Conflicts with proposed underground parking	Remove	Subject Property
243	White Spruce	Picea glauca	12	G	G	G	2	2	CD			Conflicts with proposed underground parking	Remove	Subject Property
244	White Spruce	Picea glauca	11	G	G	G	2	2	CD			Conflicts with proposed underground parking	Remove	Subject Property
245	White Spruce	Picea glauca	18	G	G	G	2	2	CD			Conflicts with proposed underground parking	Remove	Subject Property
246	White Spruce	Picea glauca	18	G	G	G	2.5	2	CD			Conflicts with proposed underground parking	Remove	Subject Property
247	Norway Spruce	Picea abies	12	G	G	G	2	2	CD			Conflicts with proposed underground parking	Remove	Subject Property
248	Norway Spruce	Picea abies	18	G	G	G	3	2	CD			Conflicts with proposed underground parking	Remove	Subject Property
249	Norway Spruce	Picea abies	15	G	G	G	2	2	CD			Conflicts with proposed underground parking	Remove	Subject Property
250	Norway Spruce	Picea abies	14	G	G	G	2	2	CD			Conflicts with proposed underground parking	Remove	Subject Property
251	Norway Spruce	Picea abies	13	G	G	G	2	2	CD			Conflicts with proposed underground parking	Remove	Subject Property
252	Norway Spruce	Picea abies	13	G	G	G	2	2	CD			Conflicts with proposed underground parking	Remove	Subject Property
253	White Spruce	Picea glauca	17	G	G	G	2	2	CD			Conflicts with proposed underground parking	Remove	Subject Property
254	White Spruce	Picea glauca	12	G	G	G	2	2	CD			Conflicts with proposed underground parking	Remove	Subject Property
255	Blue Spruce	Picea pungens	11	G	G	G	1.5	2	D			Conflicts with proposed underground parking	Remove	Subject Property
256	Blue Spruce	Picea pungens	14	G	G	G	2	2	D			Conflicts with proposed underground parking	Remove	Subject Property
257	Blue Spruce	Picea pungens	13	G	G	G	2	2	D			Conflicts with proposed underground parking	Remove	Subject Property
258	Blue Spruce	Picea pungens	14	G	G	G	2	2	D			Conflicts with proposed underground parking	Remove	Subject Property
259	Blue Spruce	Picea pungens	11	G	G	G	1	2	D			Conflicts with proposed underground parking	Remove	Subject Property
260	Blue Spruce	Picea pungens	13	G	G	G	2	2	D			Conflicts with proposed underground parking	Remove	Subject Property
261	Blue Spruce	Picea pungens	15	G	G	G	2	2	D			Conflicts with proposed underground parking	Remove	Subject Property
Unit 262	Eastern White Cedar	Thuja occidentalis	10-15, avg: 12	G	G	G	1.5	2	CD		13 Cedar hedge trees	Conflicts with proposed underground parking	Remove	Subject Property
263	Eastern Cottonwood	Populus deltoides	12	G	G	G	2	2	D			Conflicts with proposed building	Remove	Subject Property
264	Blue Spruce	Picea pungens	12	G	G	G	1.5	2	D			Conflicts with proposed building	Remove	Subject Property
265	Eastern White Cedar	Thuja occidentalis	10, 5, 4	G	G	G	1.5	2	CD		Union at ground	Conflicts with proposed underground parking	Remove	Subject Property
266	Eastern White Cedar	Thuja occidentalis	12, 7	FG	G	G	1.5	2	CD		Union at ground	Conflicts with proposed underground parking	Remove	Subject Property
267	Eastern White Cedar	Thuja occidentalis	11	G	G	G	1.5	2	CD			Conflicts with proposed underground parking	Remove	Subject Property
268	Eastern White Cedar	Thuja occidentalis	10	G	G	G	1	2	CD			Conflicts with proposed underground parking	Remove	Subject Property
269	Siberian Elm	Ulmus pumila	10	G	G	G	2	2	CD			Conflicts with proposed underground parking	Remove	Subject Property
270	Siberian Elm	Ulmus pumila	9, 11, 12	F	FG	G	3	2	CD		Union at ground	Conflicts with proposed underground parking	Remove	Subject Property
271	Eastern White Cedar	Thuja occidentalis	13, 10, 5	G	FG	G	2	2	CD		Vertical scaffold limb	Conflicts with proposed underground parking	Remove	Subject Property
272	Eastern White Cedar	Thuja occidentalis	17	G	G	G	2	2	CD			Conflicts with proposed underground parking	Remove	Subject Property
273	Norway Spruce	Picea abies	23	G	G	G	3	2	CD			Conflicts with proposed underground parking	Remove	Subject Property
274	Norway Spruce	Picea abies	19	G	G	G	3	2	CD			Conflicts with proposed underground parking	Remove	Subject Property
275	Eastern White Cedar	Thuja occidentalis	11	G	G	G	1.5	2	CD			Conflicts with proposed underground parking	Remove	Subject Property
276	Eastern White Cedar	Thuja occidentalis	12, 8, 8	FG	G	G	2	2	CD		Union at ground	Conflicts with proposed underground parking	Remove	Subject Property
277	Eastern White Cedar	Thuja occidentalis	10, 3	FG	G	G	1.5	2	CD			Conflicts with proposed underground parking	Remove	Subject Property
278	Eastern White Cedar	Thuja occidentalis	11	FG	G	G	2.5	2	CD		Union at ground	Conflicts with proposed underground parking	Remove	Subject Property
279	Eastern White Cedar	Thuja occidentalis	13	G	G	G	2	2	CD			Conflicts with proposed underground parking	Remove	Subject Property
280	Pear species	Pyrus spp.	13, 10	FG	G	G	3	2	I		Union at 0.8 m	Conflicts with proposed underground parking	Remove	Subject Property
281	Pear species	Pyrus spp.	10	G	G	G	2	2	I			Conflicts with proposed underground parking	Remove	Subject Property
282	Silver Maple	Acer saccharinum	28, 25, 20, 20, 18	F	FG	G	5	2	D			Conflicts with proposed underground parking	Remove	Neighbouring
283	Siberian Elm	Ulmus pumila	21	G	G	G	3	2	CD			Conflicts with proposed underground parking	Remove	Boundary
284	Siberian Elm	Ulmus pumila	33	F	G	G	5	2	CD		Union at 1.3 m, diameter measured at 0.8	Conflicts with proposed underground parking	Remove	Boundary
285	Siberian Elm	Ulmus pumila	12	G	G	G	2	2	I			Conflicts with proposed underground parking	Remove	Boundary
286	Siberian Elm	Ulmus pumila	17	G	F	F	2	2	I		Stem wound, 20% crown dieback	Conflicts with proposed underground parking	Remove	Boundary
287	Siberian Elm	Ulmus pumila	17	G	G	G	3	2	CD			Conflicts with proposed underground parking	Remove	Boundary
288	Siberian Elm	Ulmus pumila	16	G	G	G	2	2	CD			Conflicts with proposed underground parking	Remove	Boundary
289	Siberian Elm	Ulmus pumila	12	FG	G	G	2	2	I			Conflicts with proposed underground parking	Remove	Boundary
290	Siberian Elm	Ulmus pumila	21, 13	G	FG	G	4	2	CD		Union at 0.5 m	Conflicts with proposed underground parking	Remove	Boundary
291	Siberian Elm	Ulmus pumila	13	G	FG	G	2	2	I			Conflicts with proposed underground parking	Remove	Boundary
292	Siberian Elm	Ulmus pumila	11, 9	G	FG	G	3	2	I		Union at 0.5	Conflicts with proposed underground parking	Remove	Boundary
293	Siberian Elm	Ulmus pumila	11	G	G	G	2	2	CD			Conflicts with proposed underground parking	Remove	Boundary
294	Siberian Elm	Ulmus pumila	18	G	G	G	3	2	CD			Conflicts with proposed underground parking	Remove	Boundary
295	Siberian Elm	Ulmus pumila	12	F	F	F	2	2	I		50% crown dieback, small cavity at flare	Conflicts with proposed underground parking	Remove	Boundary
296	Siberian Elm	Ulmus pumila	19	FG	G	G	4	2	CD			Conflicts with proposed underground parking	Remove	Boundary
297	Siberian Elm	Ulmus pumila	15	G	FF	FF	4	2	CD		30% crown dieback	Conflicts with proposed underground parking	Remove	Subject Property
298	Siberian Elm	Ulmus pumila	16	G	F	F	2	2	CD		30% crown dieback	Conflicts with proposed underground parking	Remove	Boundary
299	Siberian Elm	Ulmus pumila	16, 21	G	G	G	4	2	CD		Union at ground	Conflicts with proposed underground parking	Remove	Subject Property
300	Siberian Elm	Ulmus pumila	11	G	G	G	2	2	I			Conflicts with proposed underground parking	Remove	Boundary
301	Siberian Elm	Ulmus pumila	19, 17, 25, 22	F	FG	G	5	2	CD		Union at 1 m	Conflicts with proposed underground parking	Remove	Boundary
302	Siberian Elm	Ulmus pumila	13	F	FG	G	3	2	I			Conflicts with proposed underground parking	Remove	Subject Property
303	Siberian Elm	Ulmus pumila	10, 9	F	FG	G	3	2	I		Union at 1 m	Conflicts with proposed underground parking	Remove	Boundary
304	Siberian Elm	Ulmus pumila	23, 28	F	FG	G	4	2	CD		Union at 1 m	Conflicts with proposed underground parking	Remove	Subject Property
305	Siberian Elm	Ulmus pumila	12, 16	F	FG	G	3	2	I			Conflicts with proposed underground parking	Remove	Subject Property
306	Siberian Elm	Ulmus pumila	16	FG	G	G	3	2	I		Pruning wounds at flare	Conflicts with proposed underground parking	Remove	Subject Property
307	Siberian Elm	Ulmus pumila	33	G	G	G	5	2	CD			Conflicts with proposed underground parking	Remove	Subject Property
308	Siberian Elm	Ulmus pumila	25	G	F	F	3	2	CD		Heavy epicormic branching	Conflicts with proposed underground parking	Remove	Subject Property
309	Siberian Elm	Ulmus pumila	17	F	F	F	3	2	I		Union at 1.8 m, 20% crown dieback	Conflicts with proposed underground parking	Remove	Subject Property
310	Siberian Elm	Ulmus pumila	18	F	P	P	3	2	I		50% crown dieback	Conflicts with proposed underground parking	Remove	Subject Property
311	Siberian Elm	Ulmus pumila	18	F	P	P	1	2	I		80% crown dieback	Conflicts with proposed underground parking	Remove	Subject Property
312	Siberian Elm	Ulmus pumila	16, 16	F	FG	G	3	2	CD		Union at 0.4 m	Conflicts with proposed underground parking	Remove	Subject Property
313	Siberian Elm	Ulmus pumila	15	G	G	G	3	2	I			Conflicts with proposed underground parking	Remove	Subject Property
314	Siberian Elm	Ulmus pumila	19, 29	FG	G	G	4	2	CD		Union at 1.2 m	Conflicts with proposed underground parking	Remove	Regional ROW
315	Eastern White Cedar	Thuja occidentalis	11, 7, 5	FG	G	G	1.5	2	CD		Union at ground	Conflicts with proposed underground parking	Remove	Subject Property
316	Eastern White Cedar	Thuja occidentalis	10, 8, 5	FG	G	G	1.5	2	CD		Union at ground	Conflicts with proposed underground parking	Remove	Subject Property
317	Eastern White Cedar	Thuja occidentalis	11, 7	FG	G	G	1.5	2	CD		Vertical scaffold limb	Conflicts with proposed underground parking	Remove	Subject Property
318	Eastern White Cedar	Thuja occidentalis	11, 7	FG	G	G	1.5	2	CD		Union at ground	Conflicts with proposed underground parking	Remove	Subject Property
319	Norway Spruce	Picea abies	19	G	G	G	2	2	CD			Conflicts with proposed underground parking	Remove	Subject Property
320	Eastern White Cedar	Thuja occidentalis	10	G	G	G	1.5	2	CD			Conflicts with proposed underground parking	Remove	Subject Property
321	Eastern White Cedar	Thuja occidentalis	11	G	G	G	1.5	2	CD			Conflicts with proposed underground parking	Remove	Subject Property
322	Eastern White Cedar	Thuja occidentalis	10, 9	FG	G	G	1.5	2	CD		Union at 0.3 m	Conflicts with proposed underground parking	Remove	Subject Property
323	Eastern White Cedar	Thuja occidentalis	11, 6, 5	FG	G	G	1.5	2	CD		Union at ground	Conflicts with proposed underground parking	Remove	Subject Property
324	Eastern White Cedar	Thuja occidentalis	15	G	G	G	1.5	2	CD			Conflicts with proposed underground parking	Remove	Subject Property
325	Eastern White Cedar	Thuja occidentalis	14	G	G	G	1.5	2	CD		Vertical scaffold limb	Conflicts with proposed underground parking	Remove	Subject Property
326	Eastern White Cedar	Thuja occidentalis	12, 13, 9	FG	G	G	1.5	2	CD		Union at ground	Conflicts with proposed underground parking	Remove	Subject Property
327	Eastern White Cedar	Thuja occidentalis	14	G	G	G	1.5	2	CD		Vertical scaffold limb	Conflicts with proposed underground parking	Remove	Subject Property
328	Norway Spruce	Picea abies	20	G	G	G	3	2	CD			Conflicts with proposed underground parking	Remove	Subject Property
329	Eastern White Cedar	Thuja occidentalis	11, 4, 6	FG	G	G	1.5	2	CD		Union at ground	Conflicts with proposed underground parking	Remove	Subject Property
330	Eastern White Cedar	Thuja occidentalis	10, 6, 5	FG	G	G	1.5	2	CD		Union at ground	Conflicts with proposed underground parking	Remove	Subject Property
331	Eastern White Cedar	Thuja occidentalis	15	G	G	G	1.5	2	CD			Conflicts with proposed underground parking	Remove	Subject Property
332	Norway Spruce	Picea abies	23	G	G	G	3	2	CD			Conflicts with proposed underground parking	Remove	Subject Property
333	Norway Spruce	Picea abies	16	G	G	G	2	2	CD			Conflicts with proposed underground parking	Remove	Subject Property
334	Eastern White Cedar	Thuja occidentalis	13	G	G	G	1.5	2	CD			Conflicts with proposed underground parking	Remove	Subject Property
335	Norway Spruce	Picea abies	13	G	G	G	2	2	CD			Conflicts with proposed underground parking	Remove	Subject Property
336	Norway Spruce	Picea abies	15	G	G	G	3	2	CD			Conflicts with proposed underground parking	Remove	Subject Property
337	Eastern White Cedar	Thuja occidentalis	11	G	G	G	1.5	2	CD			Conflicts with proposed underground parking	Remove	Subject Property
338	Eastern White Cedar	Thuja occidentalis	11	G	G	G	1.5	2	CD			Conflicts with proposed underground parking	Remove	Subject Property
339	Norway Maple	Acer platanoides	16	G	G	G	2	2	D			Conflicts with proposed building	Remove	Subject Property
340	Norway Maple	Acer platanoides	20	G	G	G	2.5	2	D			Conflicts with proposed building	Remove	Subject Property
341	Eastern Cottonwood	Populus deltoides	11	G	G	G	2	2	D			Conflicts with proposed underground parking	Remove	Subject Property
342	Manitoba Maple	Acer negundo	19	G	G	G	3	2	D		Union at 1.3 m, diameter measured at 0.8	Conflicts with proposed underground parking	Remove	Subject Property
343	Bur Oak	Quercus macrocarpa	92	F	G	G	8	6	D		Union at 1.3 m, diameter measured at 0.8	Conflicts with proposed underground parking	Remove	Subject Property
344	Bur Oak	Quercus macrocarpa	66	G	G	G	8	4	D			Conflicts with proposed underground parking	Remove	Subject Property
345	Bur Oak	Quercus macrocarpa	93	G	G	G	9	6	D			Conflicts with proposed underground parking	Remove	Subject Property
346	Bur Oak	Quercus macrocarpa	11	G	G	G	2	2	I			Conflicts with proposed underground parking	Remove	Subject Property
347	Bur Oak	Quercus macrocarpa	91	G	G	G	4	2	I			Conflicts with proposed underground parking	Remove	Subject Property
348	Bur Oak	Quercus macrocarpa	12	G	G	G	2	2	CD			Conflicts with proposed underground parking	Remove	Subject Property
349	Silver Maple	Acer saccharinum	-16	G	G	G	4	2	CD				Save	Neighbouring
350	Red Oak	Quercus rubra	-12, 14	F	FG	G	3	2	CD		Union at ground		Save	Neighbouring
351	Silver Maple	Acer saccharinum	-18	G	G	G	4	2	CD				Save	Neighbouring
352	Silver Maple	Acer saccharinum	-18	G	G	G	3	2	CD				Save	Neighbouring
353	Silver Maple	Acer saccharinum	-15	G	G	G	3	2	CD				Save	Neighbouring
354	White Spruce	Picea glauca	-15	G	G	G	2	2	CD				Save	Neighbouring
355	Red Oak	Quercus rubra	-13	G	G	G	2	2	CD				Save	



Canopy Cover Chart

Tree #	Tree Species	# of Trees	Soil Volume per tree (m3)	Crown Area per tree (m2)	Canopy Area Subtotal (m2)	Overlap (m2)
PROPOSED LARGE STATURE TREES (14m+ SPREAD)						
1 to 5	<i>Acer rubrum</i>	5	35.00	64.00	320.00	
6 to 11	<i>Quercus rubra</i>	6	35.00	64.00	384.00	
12 to 17	<i>Acer rubrum</i>	6	35.00	64.00	384.00	
18 to 23	<i>Quercus rubra</i>	6	35.00	64.00	384.00	
24 to 28	<i>Acer rubrum</i>	5	35.00	64.00	320.00	
34	<i>Gleditsia var inermis 'Sunburst'</i>	1	31.14	64.00	64.00	
35 to 38	<i>Ginkgo biloba</i>	4	37.00	64.00	256.00	
39	<i>Gleditsia var inermis 'Sunburst'</i>	1	32.30	64.00	64.00	
40 to 42	<i>Tilia americana</i>	3	32.40	64.00	192.00	
43 to 47	<i>Ulmus americana 'Princeton'</i>	5	25.00	64.00	320.00	
48 to 53	<i>Ginkgo biloba</i>	6	25.00	64.00	384.00	
54 to 56	<i>Ginkgo biloba</i>	3	25.00	64.00	192.00	
57 to 58	<i>Gleditsia var inermis 'Sunburst'</i>	2	25.00	64.00	128.00	
69 to 74	<i>Ulmus americana 'Princeton'</i>	6	25.00	64.00	384.00	
75 to 80	<i>Gleditsia var inermis 'Sunburst'</i>	6	30.00	64.00	384.00	
81 to 84	<i>Acer rubrum</i>	4	25.00	64.00	256.00	
85 to 87	<i>Ulmus americana 'Princeton'</i>	3	25.00	64.00	192.00	
88	<i>Ginkgo biloba</i>	1	34.70	64.00	64.00	
89 to 90	<i>Ginkgo biloba</i>	2	25.00	64.00	128.00	
92 to 93	<i>Acer rubrum</i>	2	25.00	64.00	128.00	
94	<i>Acer rubrum</i>	1	25.00	64.00	64.00	
97 to 98	<i>Ulmus americana 'Princeton'</i>	2	25.00	64.00	128.00	
99 to 102	<i>Tilia americana</i>	4	25.00	64.00	256.00	
103	<i>Gleditsia var inermis 'Sunburst'</i>	1	26.14	64.00	64.00	
104 to 105	<i>Gleditsia var inermis 'Sunburst'</i>	2	25.00	64.00	128.00	
106	<i>Tilia americana</i>	1	25.00	64.00	64.00	
107 to 109	<i>Tilia americana</i>	3	30.00	64.00	192.00	
110 to 111	<i>Acer rubrum</i>	2	25.00	64.00	128.00	
115	<i>Gleditsia var inermis 'Sunburst'</i>	1	48.75	64.00	64.00	
116	<i>Gleditsia var inermis 'Sunburst'</i>	1	25.10	64.00	64.00	
117	<i>Ulmus americana 'Princeton'</i>	1	25.00	64.00	64.00	
118 to 119	<i>Ulmus americana 'Princeton'</i>	2	25.00	64.00	128.00	
120	<i>Ulmus americana 'Princeton'</i>	1	25.64	64.00	64.00	
121 to 122	<i>Gleditsia var inermis 'Sunburst'</i>	2	25.00	64.00	128.00	
127 to 132	<i>Tilia americana</i>	6	25.00	64.00	384.00	
133 to 134	<i>Quercus rubra</i>	2	38.41	64.00	128.00	
135	<i>Quercus rubra</i>	1	37.14	64.00	64.00	
139	<i>Gleditsia var inermis 'Sunburst'</i>	1	29.49	64.00	64.00	
Subtotal for Large Canopy Trees (m2):					7104.00	
Subtotal for Large Canopy Trees (minus overlap):					7104.00	
PROPOSED MEDIUM STATURE TREES (10-13m SPREAD)						
29 to 30	<i>Ostrya virginiana</i>	2	35.17	38.00	76.00	
31 to 33	<i>Prunus serotina</i>	3	26.81	38.00	114.00	
60 to 61	<i>Ginkgo biloba 'Autumn Gold'</i>	2	22.73	38.00	76.00	
65	<i>Prunus serotina</i>	1	23.8	38.00	38.00	
66	<i>Prunus serotina</i>	1	17.52	38.00	38.00	
67 to 68	<i>Ostrya virginiana</i>	2	20	38.00	76.00	
91	<i>Ostrya virginiana</i>	1	25.75	38.00	38.00	
95	<i>Ostrya virginiana</i>	1	30.21	38.00	38.00	
96	<i>Ostrya virginiana</i>	1	38.98	38.00	38.00	
112 to 113	<i>Ginkgo biloba 'Autumn Gold'</i>	2	27.45	38.00	76.00	
114	<i>Ginkgo biloba 'Autumn Gold'</i>	1	16.89	38.00	38.00	
126	<i>Prunus serotina</i>	1	23.48	38.00	38.00	
136 to 138	<i>Prunus serotina</i>	3	17.45	38.00	114.00	
Subtotal for Medium Canopy Trees (m ²):					798.00	
Subtotal for Medium Canopy Trees (minus overlap):					798.00	
PROPOSED SMALL STATURE TREES (3-6m SPREAD)						
59	<i>Amelanchier x grandiflora</i>	1	10.86	20.00	20.00	
62 to 64	<i>Amelanchier x grandiflora</i>	3	10.00	20.00	60.00	
123	<i>Amelanchier x grandiflora</i>	1	8.50	20.00	20.00	
124 to 125	<i>Amelanchier x grandiflora</i>	2	14.34	20.00	40.00	
Subtotal for Small Canopy Trees (m ²):					140.00	
Subtotal for Small Canopy Trees (minus overlap):					140.00	
Canopy Summary						
Site Area (m ²)				37461	100%	
Site Canopy Cover (m ²)				8042.00	21.5%	
Land use Canopy Cover Target				7492.2	20%	

KEY MAP - N.T.S.



LEGEND

- - - - - property line
- proposed tree canopy coverage

NOT FOR CONSTRUCTION
ISSUED FOR REVIEW & COMMENTS ONLY

REVISIONS/ SUBMISSIONS

#	DATE	DESCRIPTION
1	2024-12-02	Issued for OPA/ZBA 1
2	2026-03-13	Issued for OPA/ZBA 2

STAMP



CLIENT
Neatt Communities

MUNICIPALITY
Oakville

PROJECT
3056 Neyagawa Boulevard
Oakville, ON

MUNICIPAL FILE NUMBER

SHEET
Tree Canopy
Cover Plan

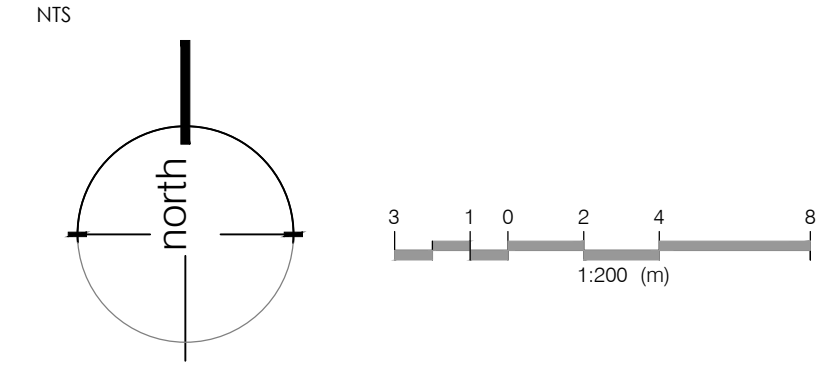
L-6



69 John Street South, Suite 250
Hamilton, ON L8N 2B9
T. 905.526.8876
e. info@adessodesigninc.ca
www.adessodesigninc.ca



KEY MAP



MATCH EX. GROUND

KEY MAP - N.T.S.



LEGEND

- property line
- existing tree to remain
- proposed deciduous tree
- proposed shrub
- proposed perennial
- min. 150mm topsoil, fine grade & sod
- C.I.P. concrete
- precast concrete unit pavers
- proposed light standard

NOT FOR CONSTRUCTION
ISSUED FOR REVIEW & COMMENTS ONLY

REVISIONS/ SUBMISSIONS

#	DATE	DESCRIPTION
1	2024-12-02	Issued for OPA/ZBA 1
2	2026-03-13	Issued for OPA/ZBA 2

STAMP



CLIENT
Neatt Communities

MUNICIPALITY
Oakville

PROJECT
3056 Neyagawa Boulevard
Oakville, ON

MUNICIPAL FILE NUMBER

SHEET
Block 1/ Building 2 and
Finger Park Concept Plan

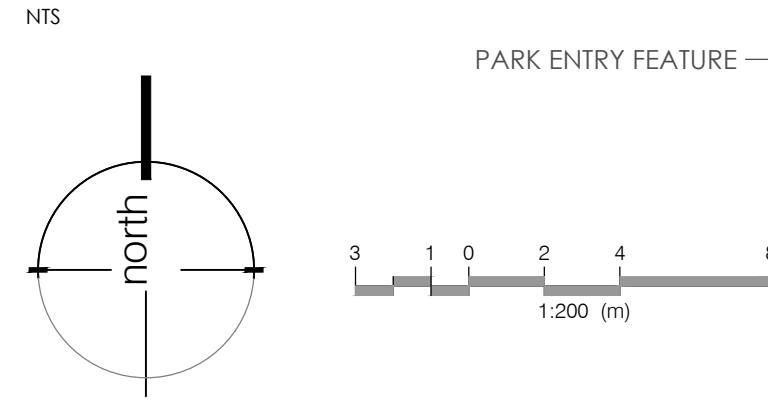
L-8



69 John Street South, Suite 250
Hamilton, ON L8N 2B9
t. 905.526.8876
e. info@adessodesigninc.ca
www.adessodesigninc.ca



KEY MAP



PARK ENTRY FEATURE

RESIDENTIAL OUTDOOR AMENITY

PLAYGROUND

SHADE STRUCTURE WITH BENCHES BELOW

TOT LOT PLAYGROUND

CLOUD SEATS

LAWN AREA



KEY MAP - N.T.S.



LEGEND

- property line
- existing tree to remain
- proposed deciduous tree
- proposed shrub
- proposed perennial
- min. 150mm topsoil, fine grade & sod
- C.I.P. concrete
- precast concrete unit pavers
- proposed light standard

NOT FOR CONSTRUCTION
ISSUED FOR REVIEW & COMMENTS ONLY

REVISIONS / SUBMISSIONS

#	DATE	DESCRIPTION
1	2024-12-02	Issued for OPA/ZBA 1
2	2026-03-13	Issued for OPA/ZBA 2



CLIENT
Neatt Communities

MUNICIPALITY
Oakville

PROJECT
3056 Neyagawa Boulevard
Oakville, ON

MUNICIPAL FILE NUMBER

SHEET
Block 2 / Building 5
Park Concept Plan L-10



69 John Street South, Suite 250
Hamilton, ON L8N 2B9
t: 905.526.8876
e: info@adessodesigninc.ca
www.adessodesigninc.ca

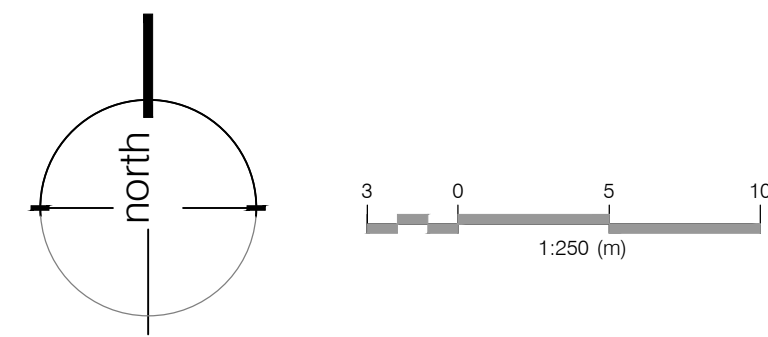


PLAYGROUND PRECEDENTS



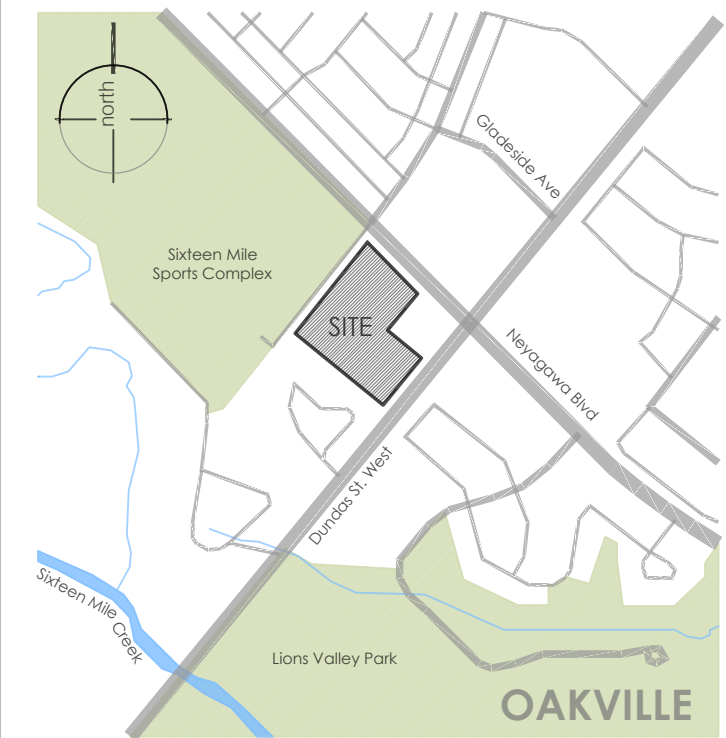
KEY MAP

NTS



- LARGE CANOPY TREES
- SMALL CANOPY TREES
- PARKING SPACES
- PRIVATE TERRACES
- 900MM RAISED METAL PLANTER
- LAWN AREA WITH CONCRETE SEATS

KEY MAP - N.T.S.



LEGEND

- property line
- existing tree to remain
- proposed deciduous tree
- proposed shrub
- proposed perennial
- min. 150mm topsoil, fine grade & sod
- C.I.P. concrete
- precast concrete unit pavers
- proposed light standard

NOT FOR CONSTRUCTION
ISSUED FOR REVIEW & COMMENTS ONLY

REVISIONS / SUBMISSIONS

#	DATE	DESCRIPTION
1	2024-12-02	Issued for OPA/ZBA 1
2	2026-03-13	Issued for OPA/ZBA 2

STAMP



CLIENT
Neatt Communities

MUNICIPALITY
Oakville

PROJECT
**3056 Neyagawa Boulevard
Oakville, ON**

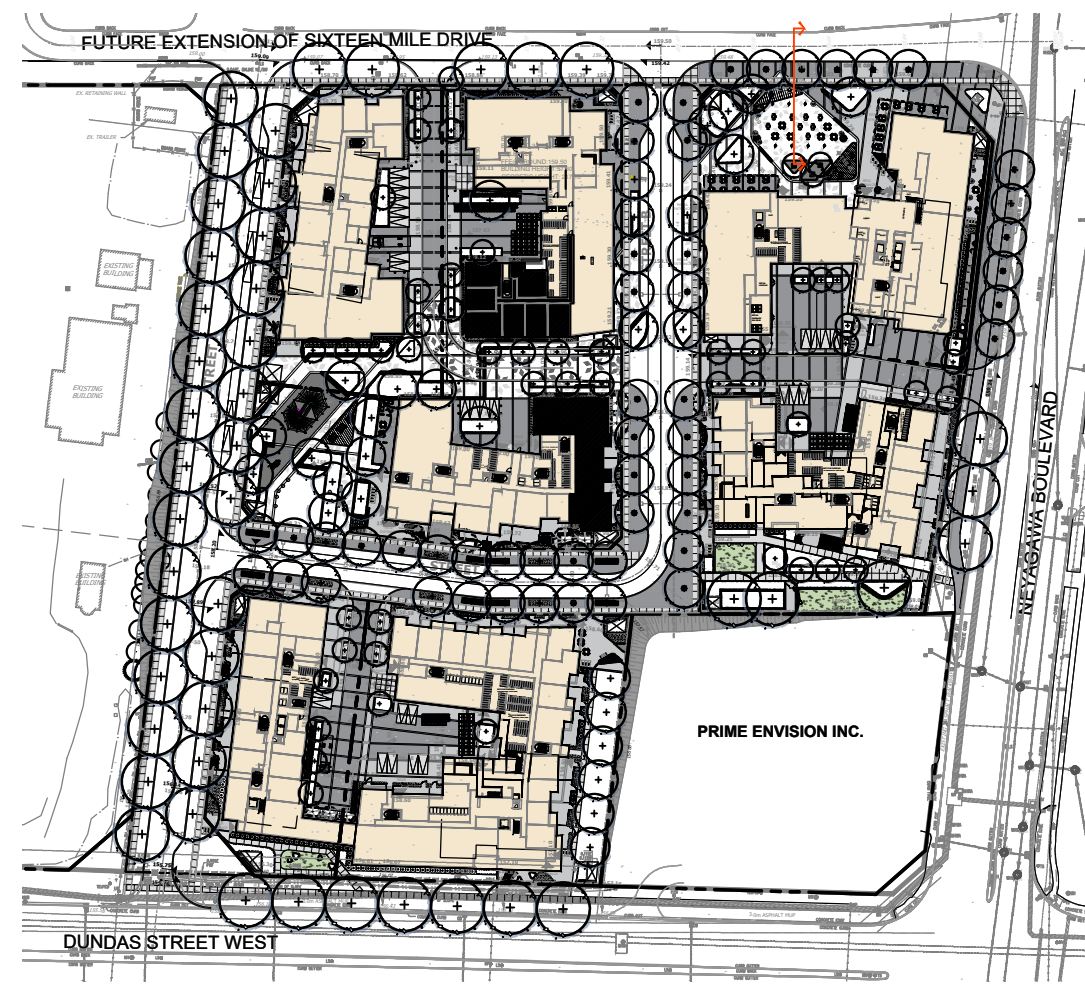
MUNICIPAL FILE NUMBER

SHEET
**Block 3 / Buildings 6 & 7
and Finger Park
Concept Plan**

L-11

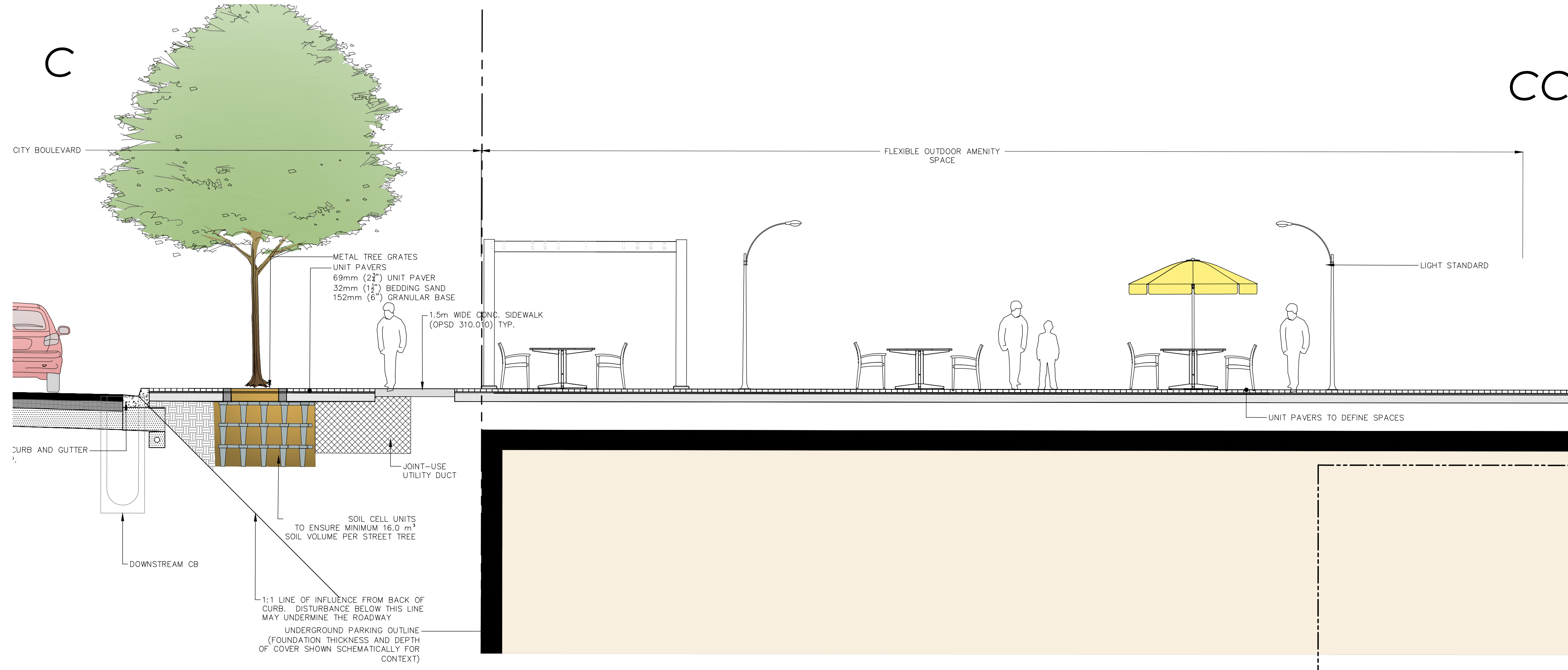
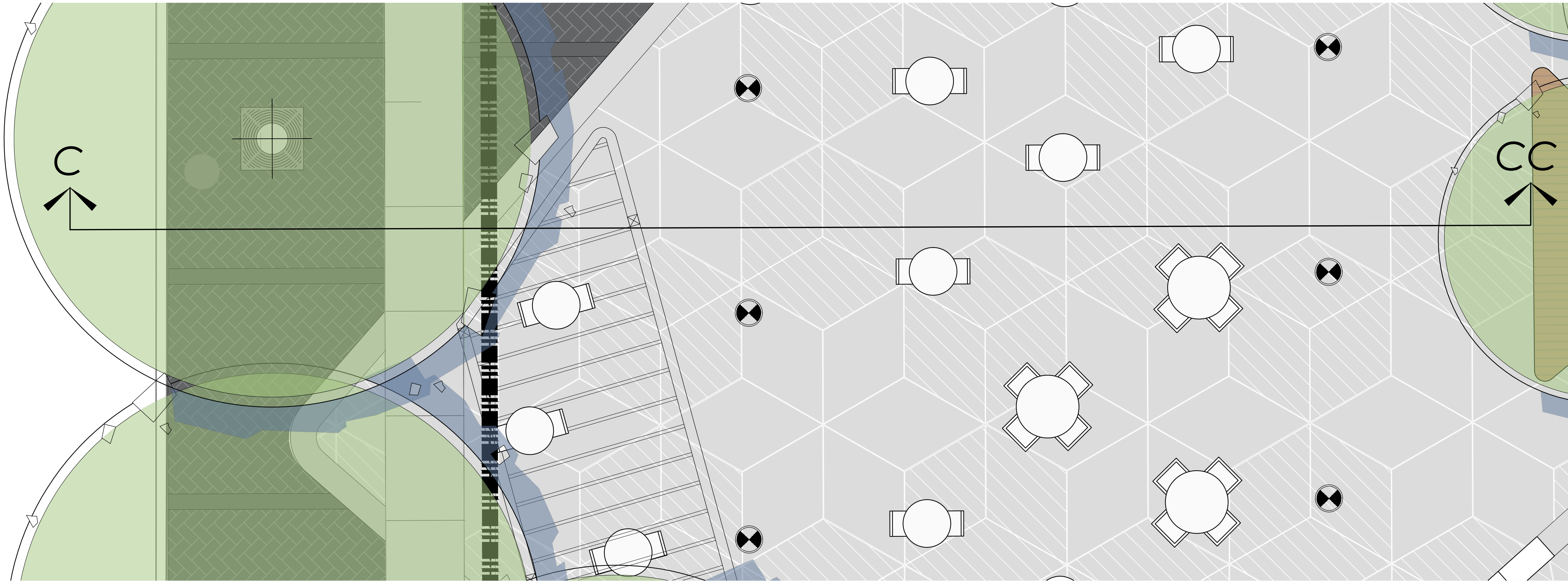
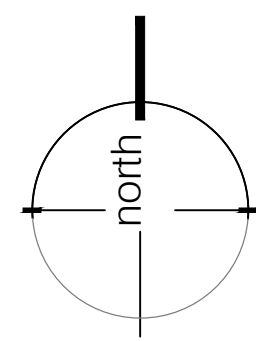


69 John Street South, Suite 250
Hamilton, ON L8N 2B9
t: 905.526.9876
e: info@adessodesigninc.ca
www.adessodesigninc.ca

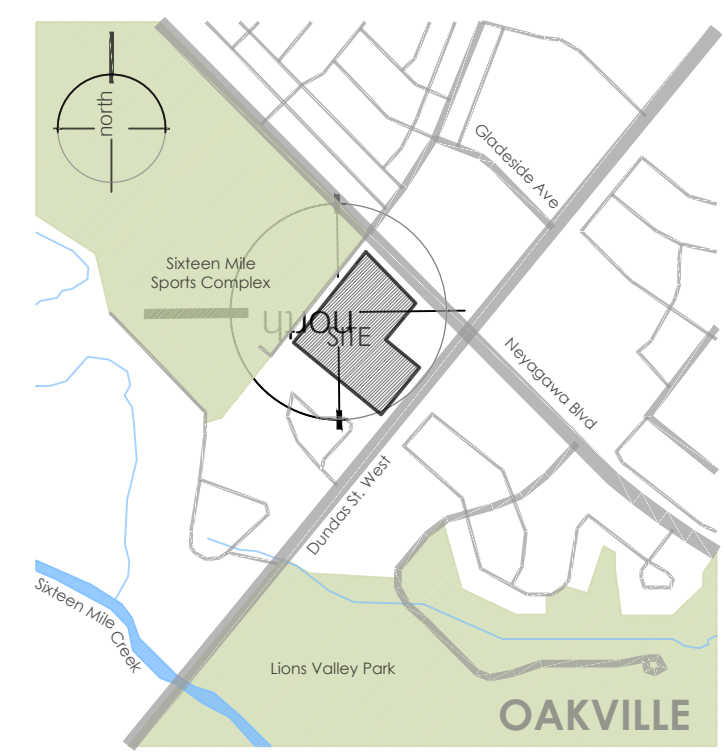


KEY MAP

SCALE NTS



KEY MAP - N.T.S.



LEGEND

- property line
- existing tree to remain
- ⊕ proposed deciduous tree
- ⊙ proposed shrub
- ⊕ proposed perennial
- min. 150mm topsoil, fine grade & sod
- C.I.P. concrete
- precast concrete unit pavers
- ⊙ proposed light standard

NOT FOR CONSTRUCTION
ISSUED FOR REVIEW & COMMENTS ONLY

REVISIONS/ SUBMISSIONS

#	DATE	DESCRIPTION
1	2024-12-02	Issued for OPA/ZBA 1
2	2026-03-13	Issued for OPA/ZBA 2



CLIENT
Neatt Communities

MUNICIPALITY
Oakville

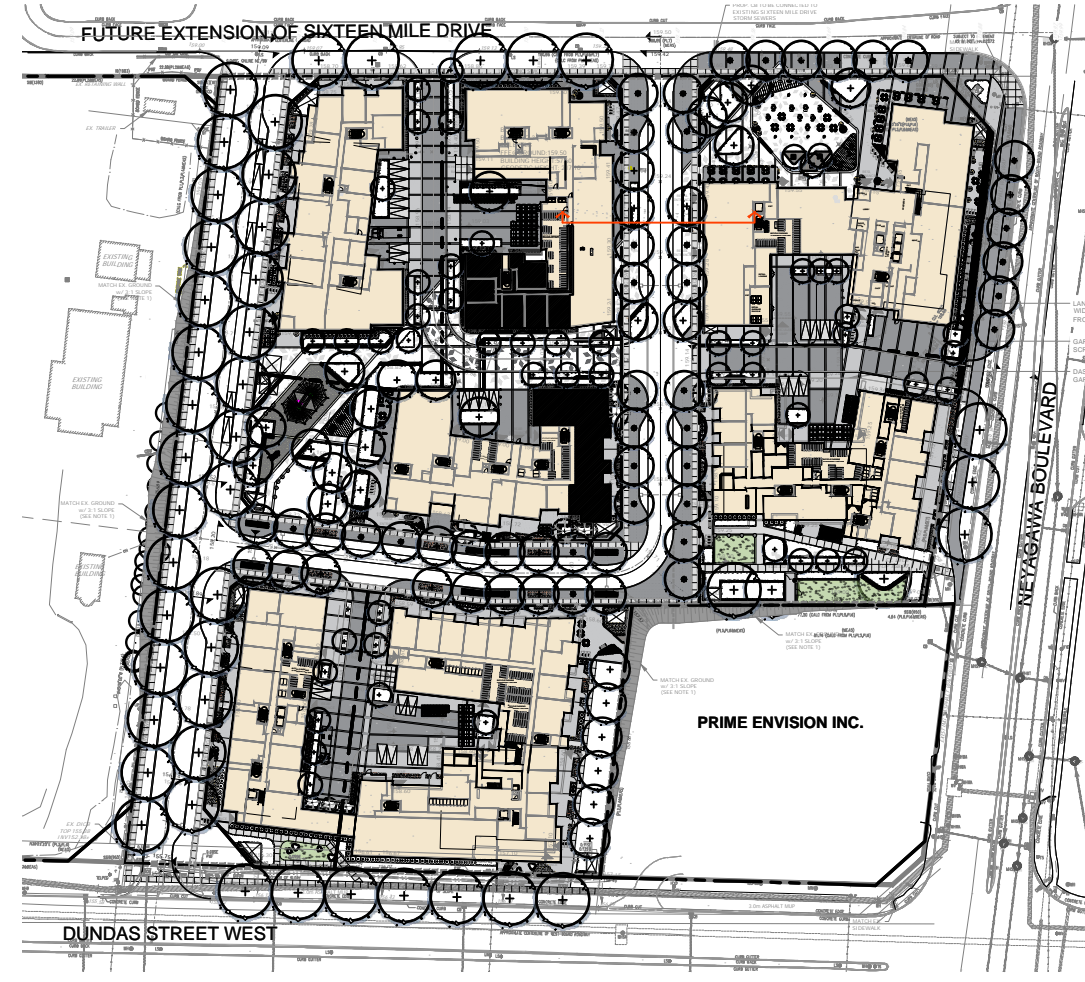
PROJECT
**3056 Neyagawa Boulevard
Oakville, ON**

MUNICIPAL FILE NUMBER

SHEET
Section C **L-14**

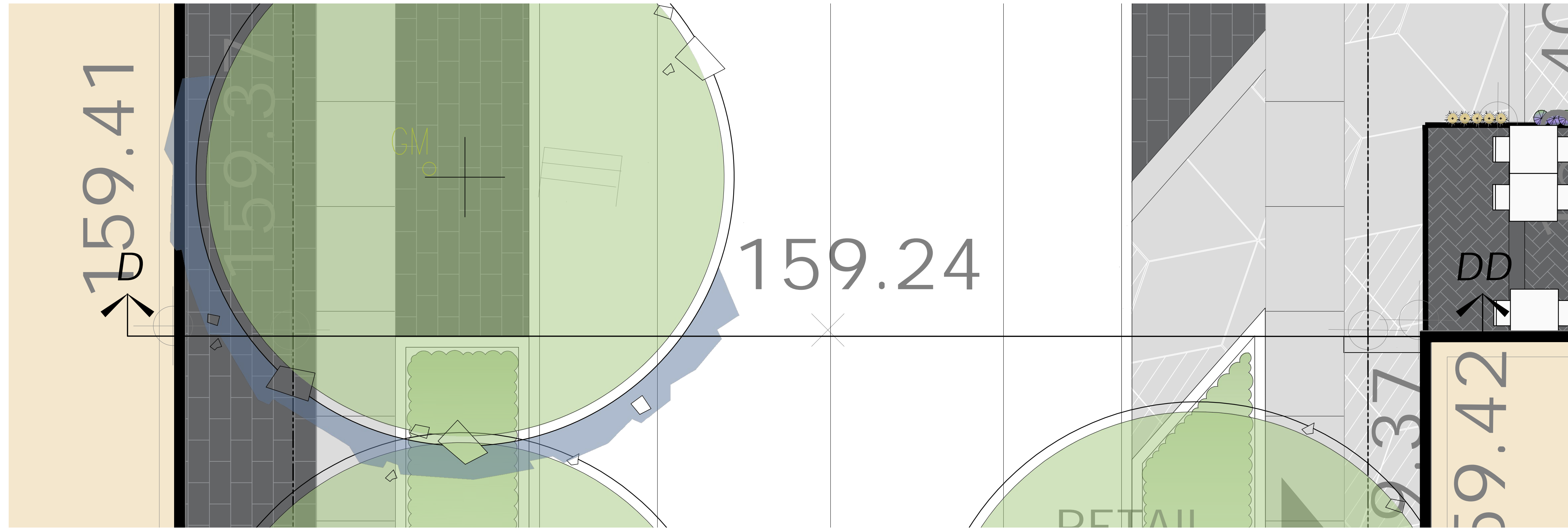
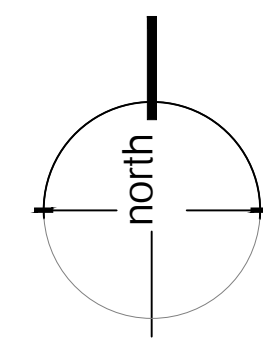


69 John Street South, Suite 250
Hamilton, ON L8N 2B9
t. 905.526.8876
e. info@adessodesigninc.ca
www.adessodesigninc.ca

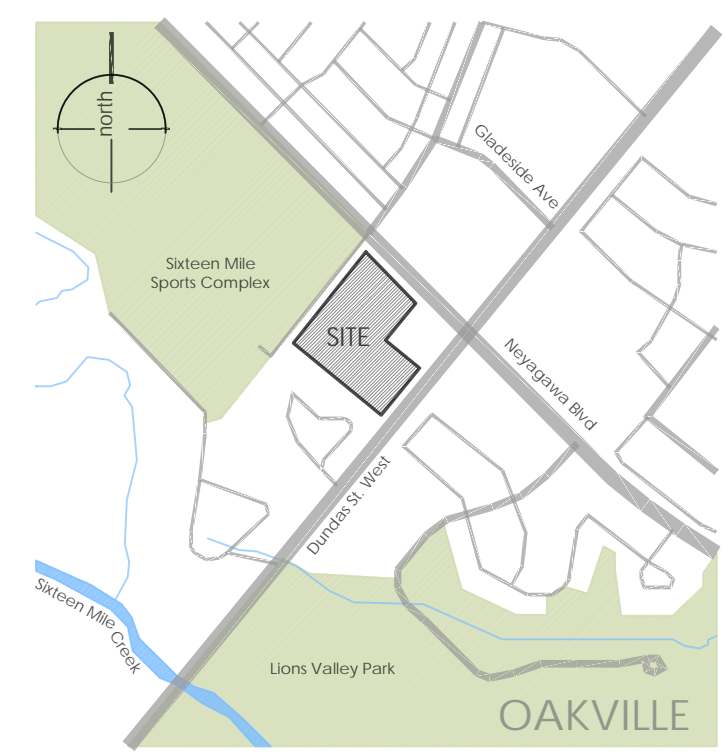


KEY MAP

SCALE NTS

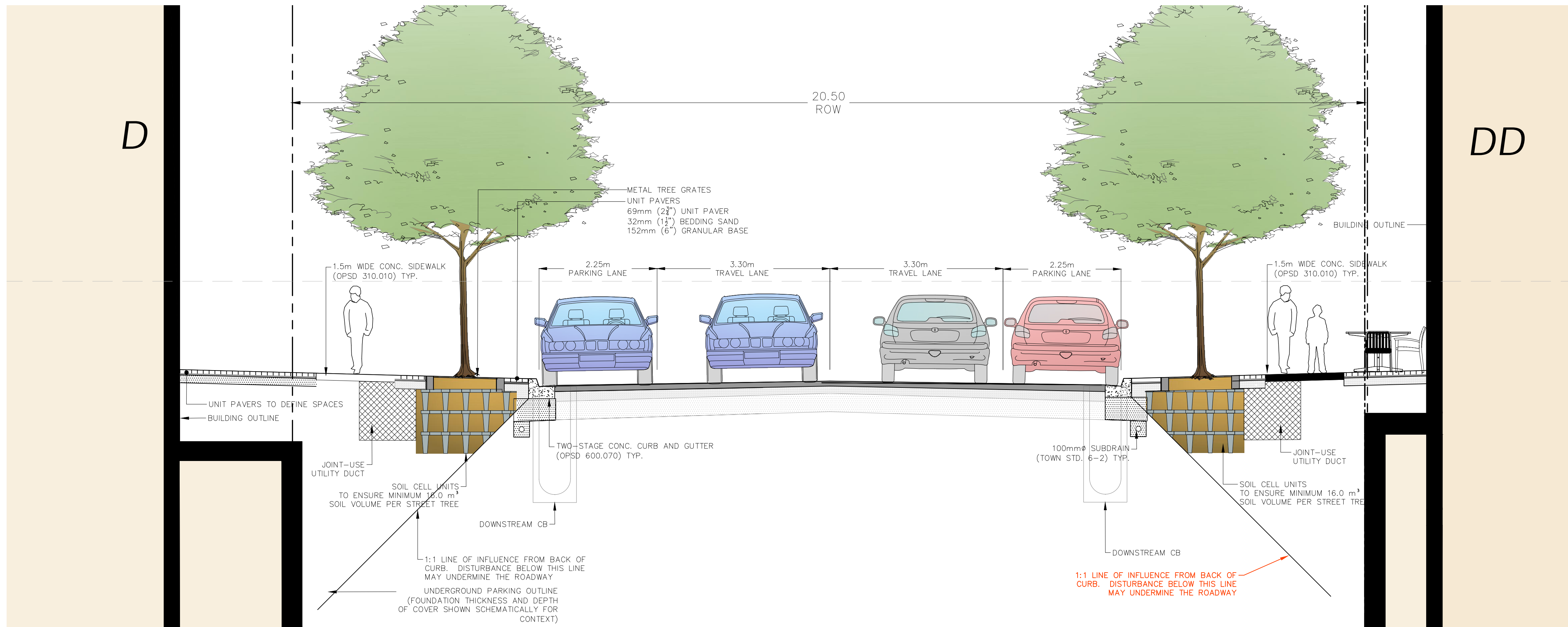


KEY MAP - N.T.S.



LEGEND

- property line
- existing tree to remain
- proposed deciduous tree
- proposed shrub
- proposed perennial
- C.I.P. concrete
- precast concrete unit pavers
- proposed light standard



NOT FOR CONSTRUCTION
ISSUED FOR REVIEW & COMMENTS ONLY

REVISIONS/ SUBMISSIONS

#	DATE	DESCRIPTION
1	2024-12-02	Issued for OPA/ZBA 1
2	2026-03-13	Issued for OPA/ZBA 2

STAMP



CLIENT
Neatt Communities
MUNICIPALITY
Oakville

PROJECT
3056 Neyagawa Boulevard
Oakville, ON

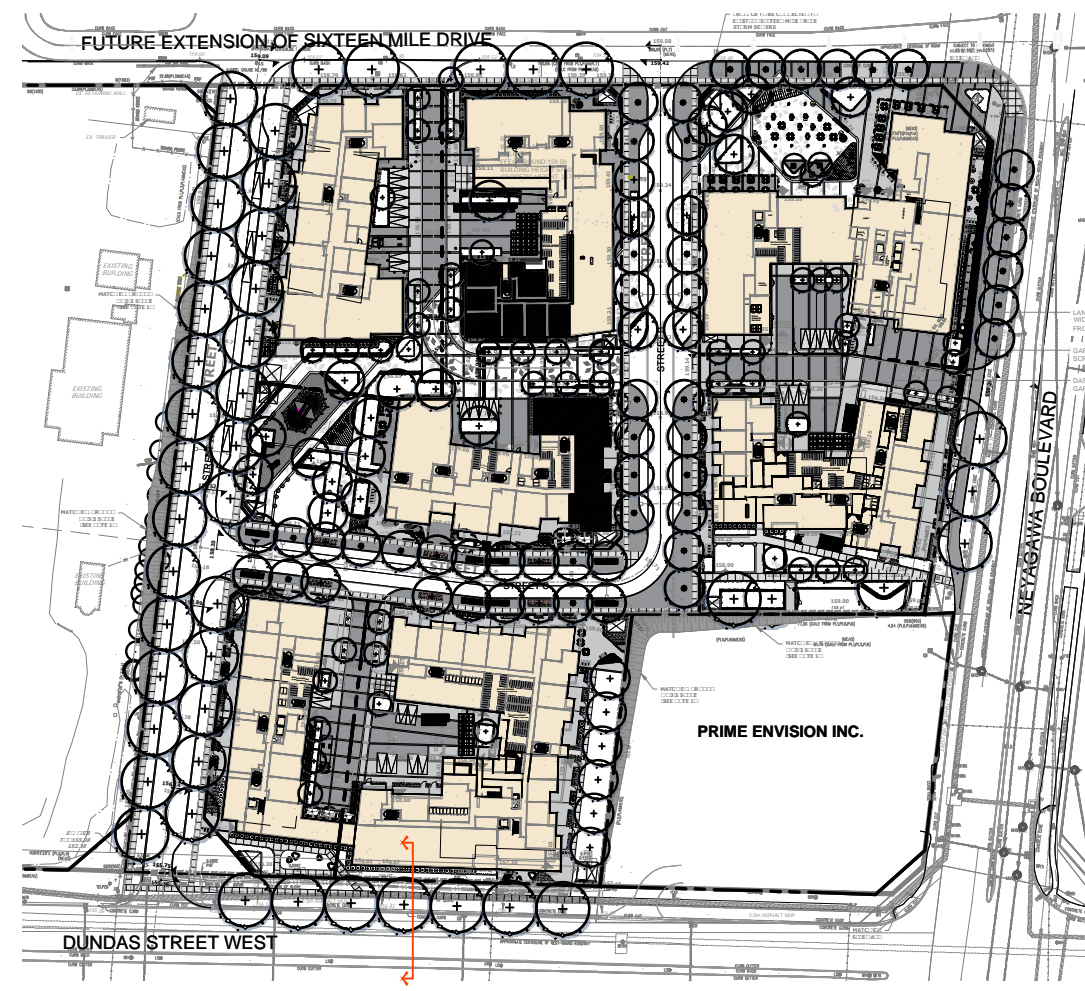
MUNICIPAL FILE NUMBER

SHEET
SECTION D

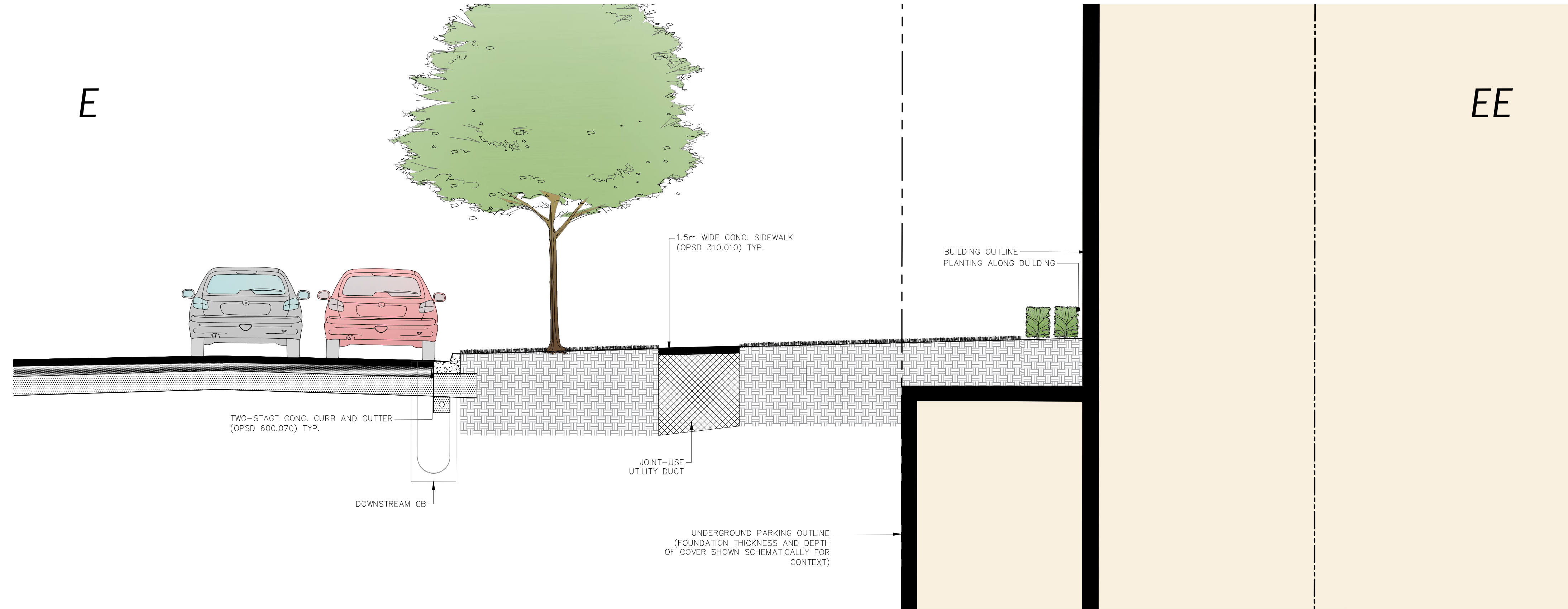
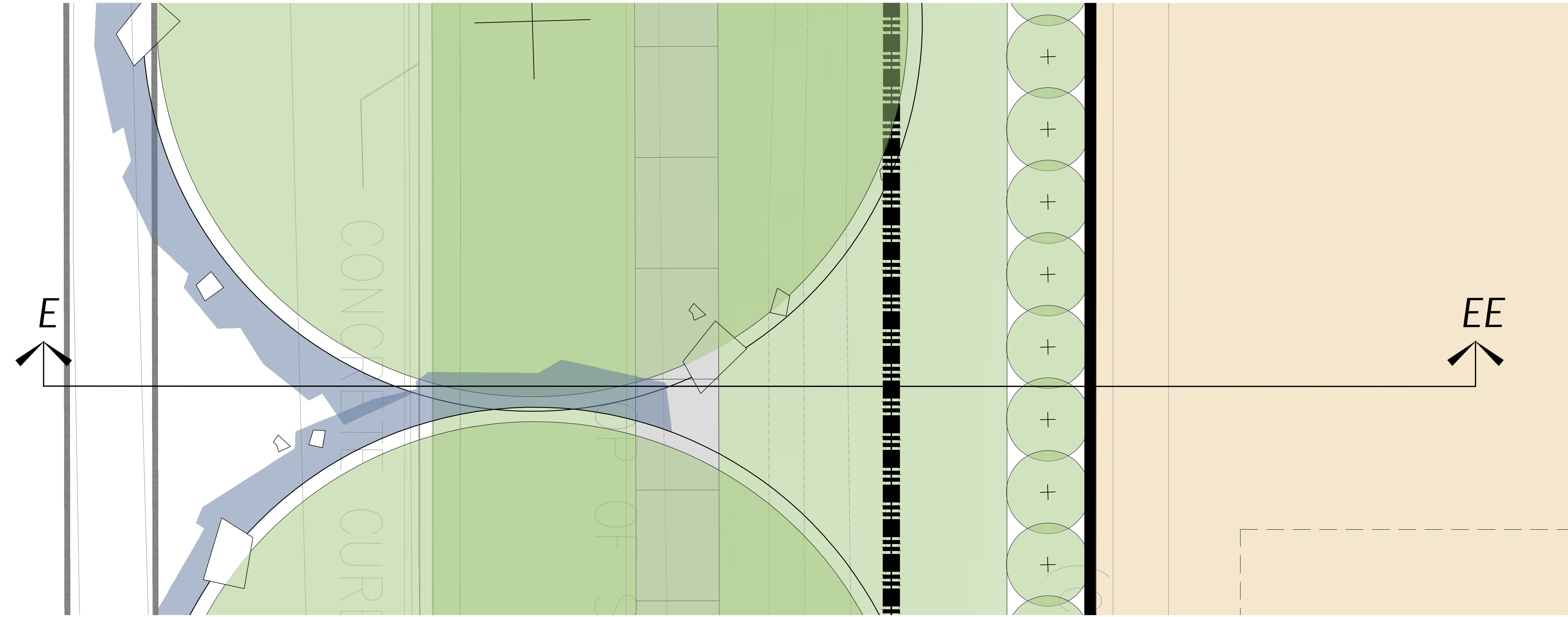
L-15



69 John Street South, Suite 250
Hamilton, ON L8N 2B9
T. 905.526.8876
e. info@adessodesigninc.ca
www.adessodesigninc.ca



KEY MAP
SCALE NTS



KEY MAP - N.T.S.



LEGEND

- property line
- existing tree to remain
- proposed deciduous tree
- proposed shrub
- proposed perennial
- min. 150mm topsoil, fine grade & sod
- C.I.P. concrete
- precast concrete unit pavers
- proposed light standard

NOT FOR CONSTRUCTION
ISSUED FOR REVIEW & COMMENTS ONLY

REVISIONS/ SUBMISSIONS

#	DATE	DESCRIPTION
1	2024-12-02	Issued for OPA/ZBA 1
2	2026-03-13	Issued for OPA/ZBA 2

STAMP



CLIENT
Neatt Communities
MUNICIPALITY
Oakville

PROJECT
3056 Neyagawa Boulevard
Oakville, ON

MUNICIPAL FILE NUMBER

SHEET
Section E

L-16

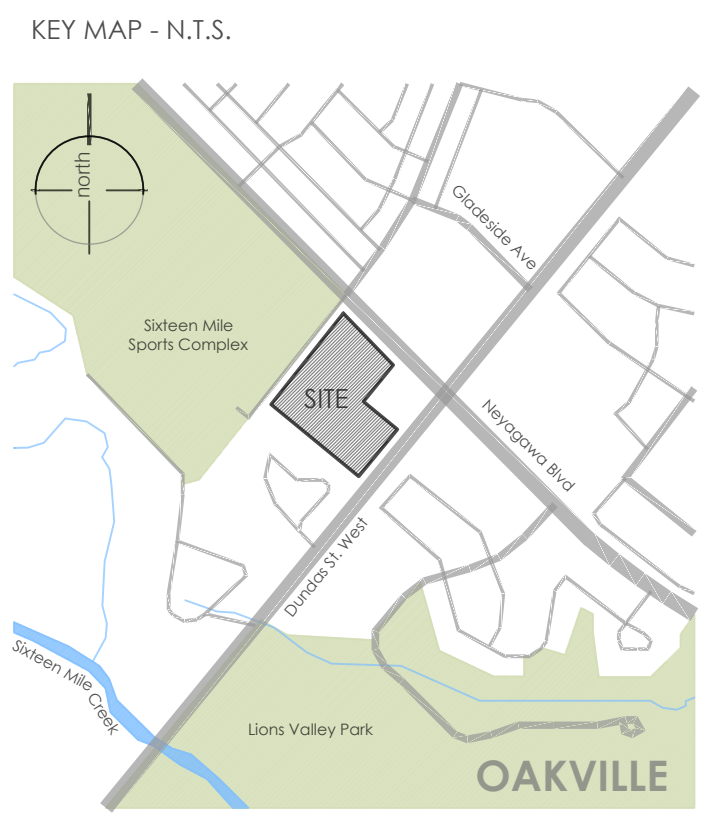


69 John Street South, Suite 250
Hamilton, ON L8N 2B9
T. 905.526.8876
e. info@adessodesigninc.ca
www.adessodesigninc.ca



LEGEND

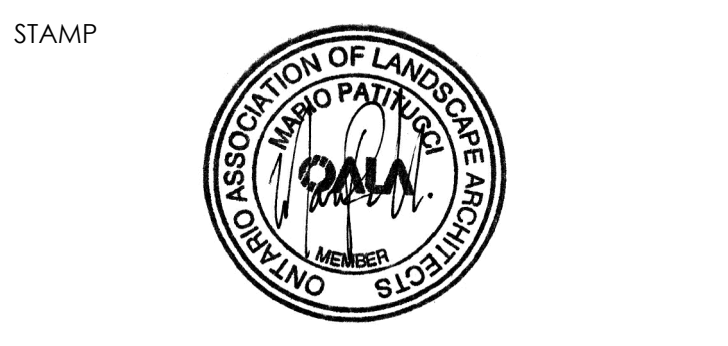
- PEDESTRIAN CIRCULATION
- VEHICULAR CIRCULATION
- BICYCLE CIRCULATION
- L LOADING
- B BIKE PARK
- STP SHORT TERM PARKING
- WOONERF - VEHICULAR
- WOONERF - PEDESTRIAN/BICYCLE



NOT FOR CONSTRUCTION
ISSUED FOR REVIEW & COMMENTS ONLY

REVISIONS/ SUBMISSIONS

#	DATE	DESCRIPTION
1	2024-12-02	Issued for OPA/ZBA 1
2	2026-03-13	Issued for OPA/ZBA 2



CLIENT
Neatt Communities

MUNICIPALITY
Oakville

PROJECT
3056 Neyagawa Boulevard
Oakville, ON

MUNICIPAL FILE NUMBER

SHEET
Circulation Plan

L-18

adesso design inc.
landscape architecture

69 John Street South, Suite 250
Hamilton, ON L8N 2B9
1.905.526.8876
www.adessodesigninc.ca