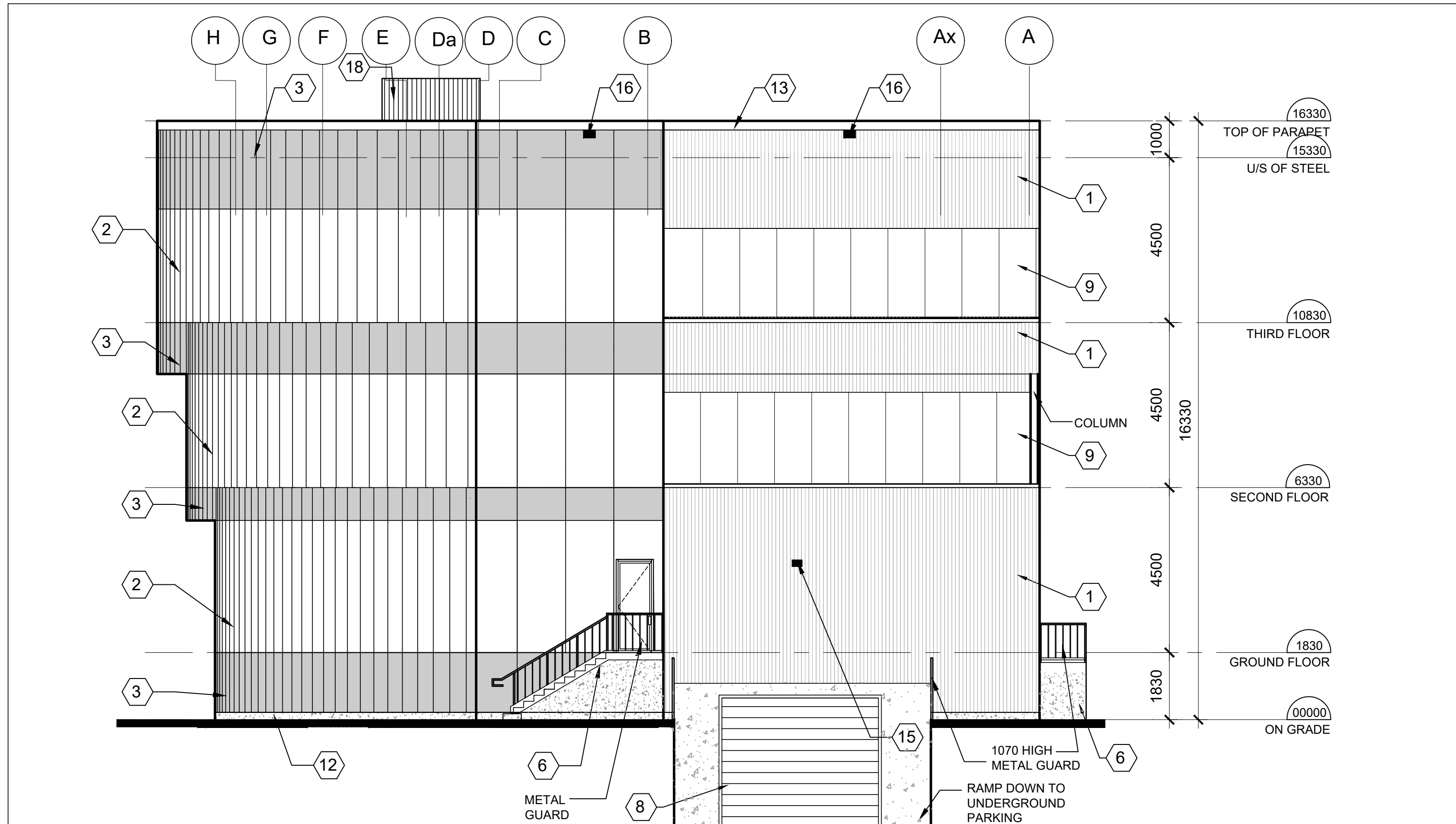


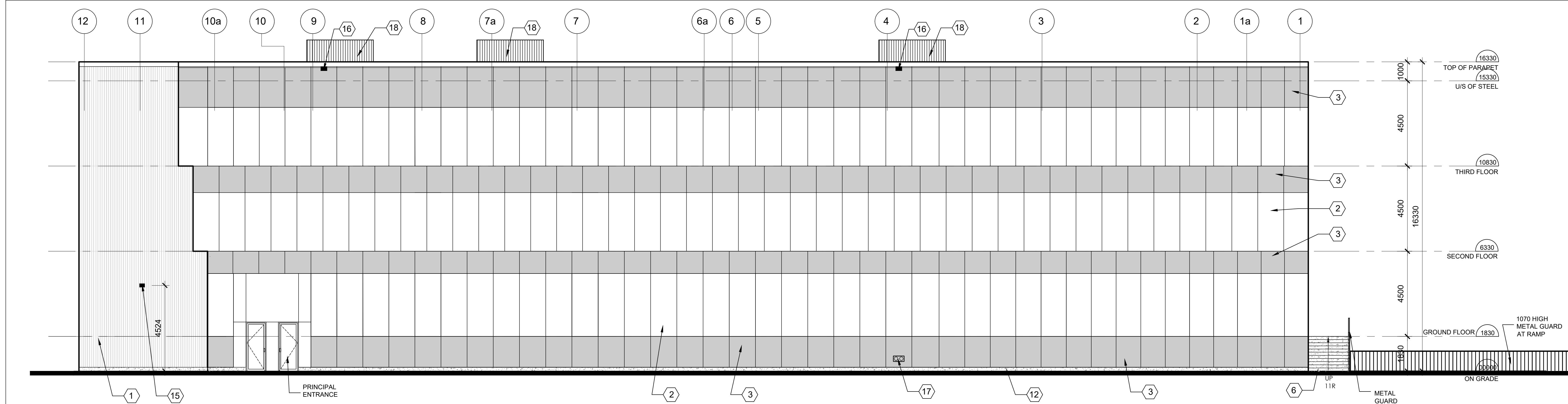
4 SOUTH ELEVATION FACING DUNDAS STREET
A-300 SCALE: 1:100



3 NORTH ELEVATION
A-300 SCALE: 1:100



2 WEST ELEVATION
A-300 SCALE: 1:100



1 EAST ELEVATION FACING SWEETWATER GATE
A-300 SCALE: 1:100

EXTERIOR MATERIALS & FINISHES:

- NORWEGIAN FLUTED SIDING-PERUVIAN TEAK
- WHITE TINTED WINDOW KAWNEER 1800T SYSTEM
- WHITE TINTED SPANDREL GLASS KAWNEER 1800T SYSTEM
- SIGNAGE BY TENANT
- COULB E 914 X 2134 ANOD. ALUM. ENTRANCE DOORS
- CONCRETE STAIRS WITH METAL HANDRAIL
- WALL MOUNTED LIGHTING FIXTURE
- 4070W1 X 4880W1 OVERHEAD DOOR (PAINTED)
- 2400 HIGH TEMPERED GLASS GUARD RAIL
- WHITE TINTED GLASS DOOR
- PERFORATED METAL SCREEN ATTACHED TO CURTAIN WALL FRAMING
- ALUMINUM TRIM
- CONCRETE BASE
- WHITE TINTED GLAZING ALUMINUM WINDOW
- WALL MOUNTED LIGHTING FIXTURE
- ROOF SCUPPER
- FIRE DEPARTMENT CONNECTION
- METAL ROOF SCREEN

OWNER
LULLABOO NURSERY AND
CHILDCARE CENTRE INC.

5	AUG.25.25	SPA REVISIONS	RA
4	APR.01.25	SPA REVISIONS	RA
3	MAR.05.25	REVISIONS AS PER CITY COMMENTS	RA
2	NOV.14.24	ISSUED FOR RE-SUBMISSION	RA
1	AUG.31.24	ISSUED FOR 1ST SPA SUBMISSION	ET
NO.	DATE	REVISIONS	BY

DRAWING ISSUE		
DATE	PARTICULARS	BY
	Issued for Design Approval	
	Issued for Site Plan Approval	
	Issued for Pricing and Budgeting	
	Issued for Building Permit	
	Issued for Tendering	
	Issued for Construction	
	Issued for Record Set of Orgs.	

This drawing, as an instrument of service, is provided by and is the property of Venchiarutti Gagliardi Architect Inc. The contractor must verify and accept responsibility for all dimensions and conditions on site and must notify Venchiarutti Gagliardi Architect Inc. of any variations from the supplied information.

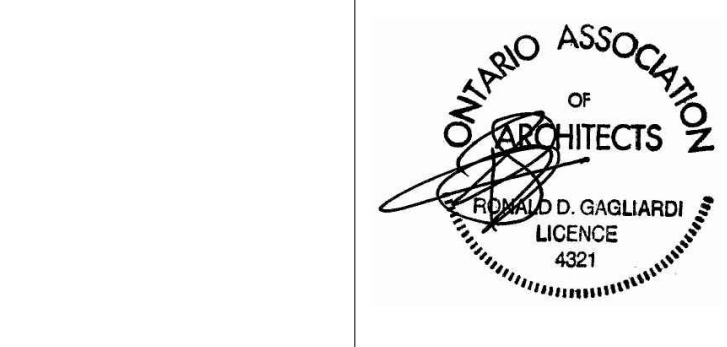
Venchiarutti Gagliardi Architect Inc. is not responsible for the accuracy of survey, structural, mechanical, electrical, etc. engineering information shown on this drawing. Refer to the appropriate engineering drawings before proceeding with the work.

Construction must conform to all applicable codes and requirements of authorities having jurisdiction. This drawing is not to be scaled.

Venchiarutti Gagliardi Architect Inc. is not responsible for any environmental conditions, geotechnical conditions or any pollutants found on site.

All architectural symbols indicated are graphic representations only.

This drawing is not to be used for construction purposes until the architectural seal is signed by the Architect of Record.



VGA Venchiarutti Gagliardi Architect Inc.
2651 John Street, Unit 18, Markham, ON L3R 2W5
T 905-477-1065 F 905-477-1067
www.vgarch.net

PROJECT		
PROPOSED TWO STOREY DAYCARE		
3010 SWEETWATER GATE OAKVILLE, ONTARIO		
DRAWING NAME EXTERIOR ELEVATIONS		
SCALE AS NOTED	DATE OF DWG. AUG.25.2025	PROJECT NO. 23019
DRAWN BY RA	SHEET NO. A-300 (SPA NO. SP.1324.003.01)	
CHKD BY ET	11/03/19 - Two Storey Daycare/Childcare Centre Drawing# 2.1.1 - Architectural Spc/202508.25.25	