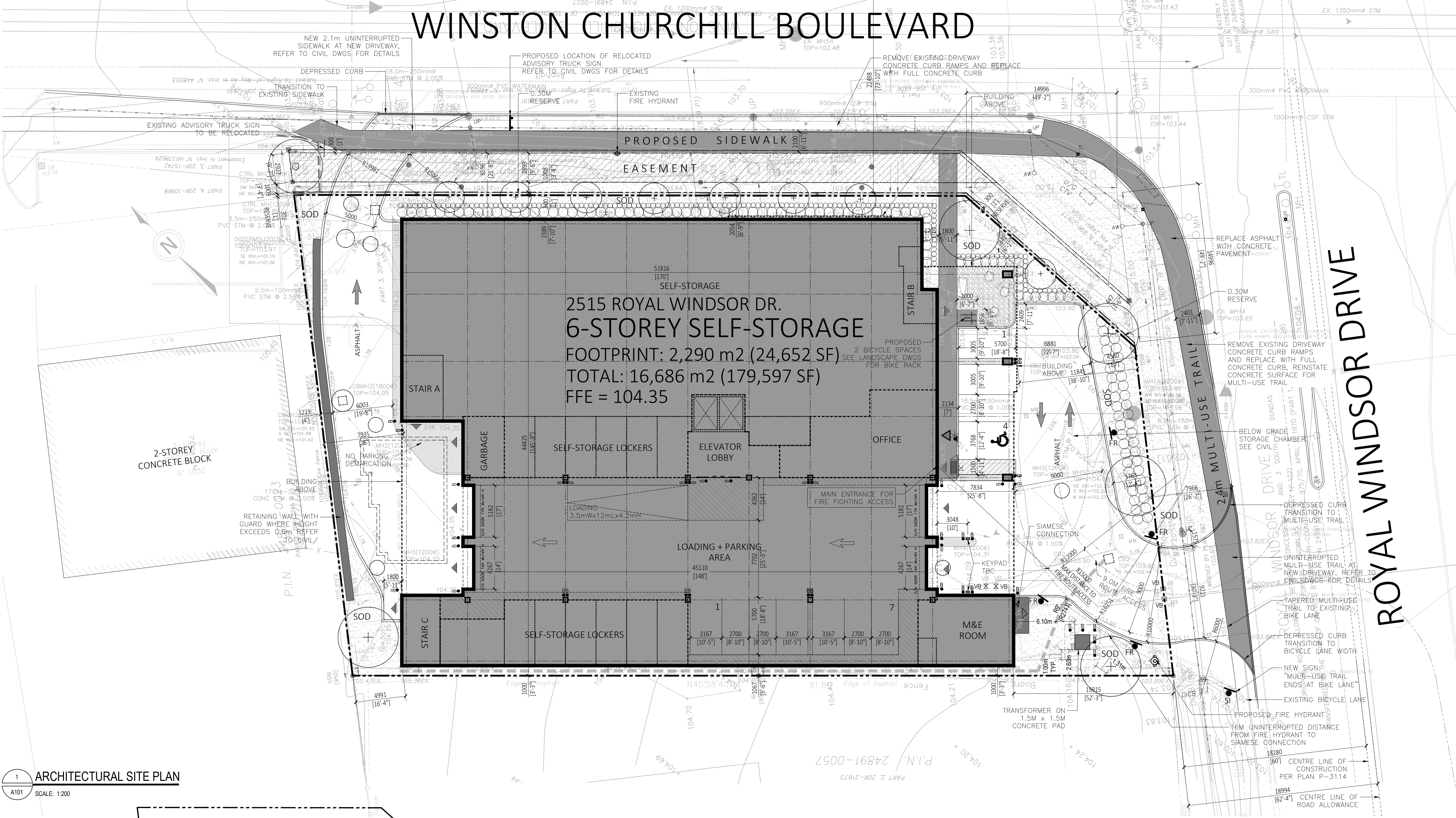


ISSUED FOR SPA

- GENERAL NOTES TYPICAL:**
- CONTRACTOR IS RESPONSIBLE TO VERIFY ALL DRAWINGS, DIMENSIONS, DETAILS, SPECIFICATIONS AND DOCUMENTS, AND VERIFY SITE CONDITIONS, AND REPORT ALL ERRORS, OMISSIONS AND DISCREPANCIES TO THE ARCHITECT IN WRITING PRIOR TO PROCEEDING WITH THE WORK.
 - DOCUMENTS ARE TO BE READ IN CONJUNCTION WITH ALL CONSULTANTS' DOCUMENTATION.
 - DO NOT SCALE DRAWINGS. DO NOT USE DOCUMENTS FOR CONSTRUCTION UNLESS INDICATED AS "FOR CONSTRUCTION" AND STAMPED AND SIGNED BY THE ARCHITECT AND CONSULTANTS.
 - CONTRACTOR AND CONSTRUCTION MUST COMPLY WITH PERTINENT CODES, BYLAWS, PROVINCIAL AND FEDERAL REGULATORY REQUIREMENTS.
 - ALL DOCUMENTS REMAIN THE PROPERTY OF THE CONSULTANTS AND MAY NOT BE USED OR REPRODUCED WITHOUT WRITTEN PERMISSION.

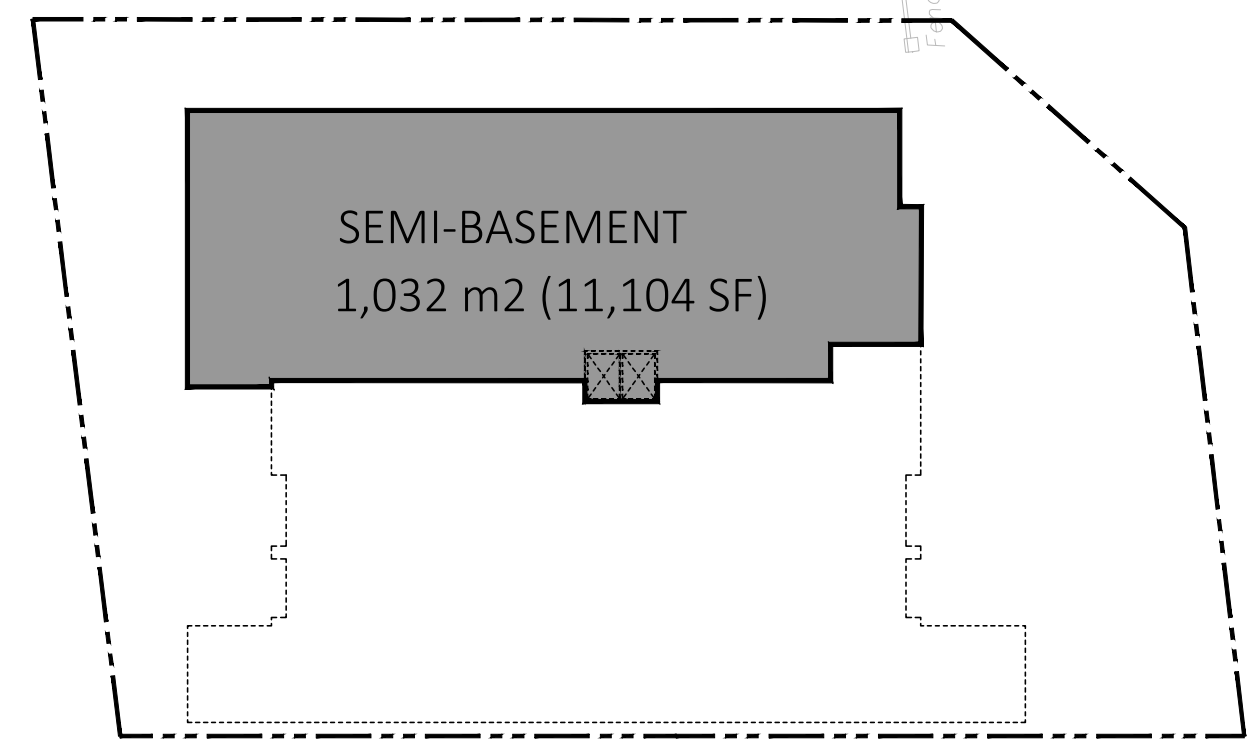


7 KEY PLAN
A101 N.T.S.

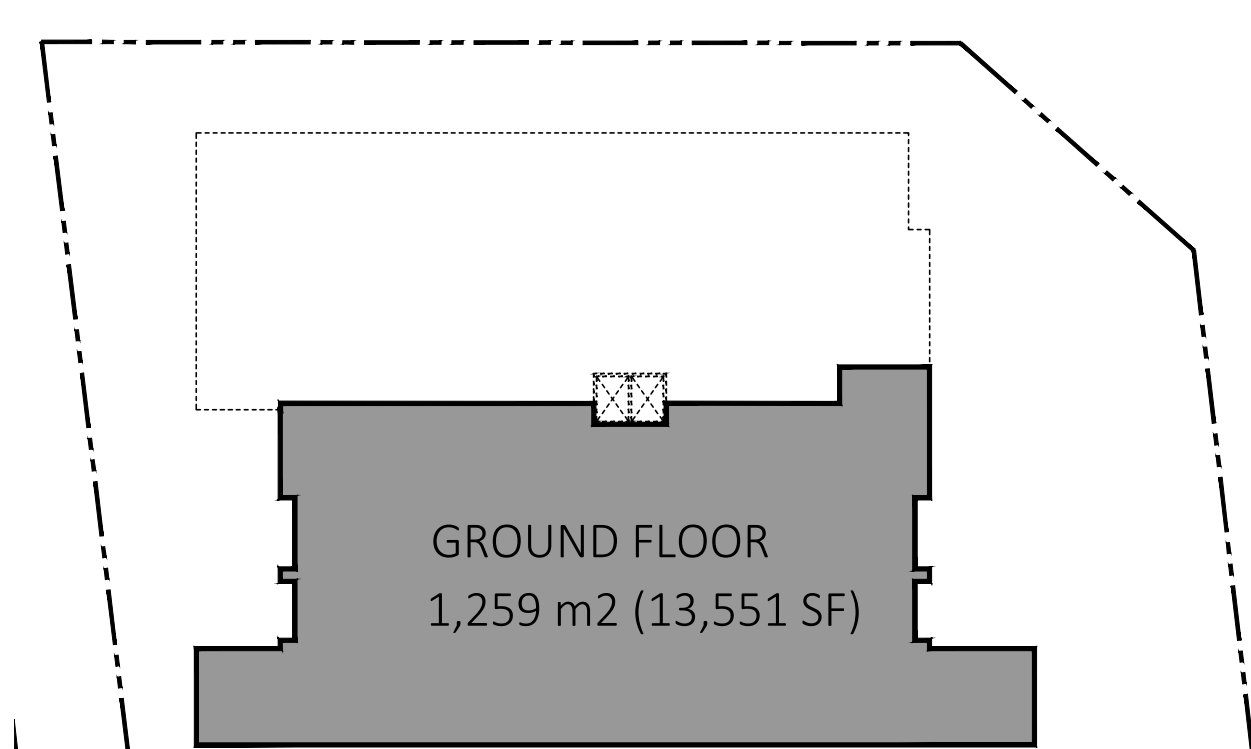


2515 Royal Windsor Drive, Oakville, ON			
Zoning By-law 2014-014	ES	ES	Proposed
Minimum Lot Area	0.2 ha	6 ha	0.38 ha
Minimum Lot Frontage	30	30 m	32.88 m
Minimum Front Yard	3.0 m	3.0 m	11.84 m
Minimum Frontage Yard	3.0 m	3.0 m	1.84 m
Minimum Interior Side Yard	3.0 m	3.0 m	1.00 m
Minimum Interior Side Yard abutting a lot in any Residential Zone, Institutional (I) Zone, or Community Use (CU) Zone	15.0 m	15.0 m	n/a
Minimum Interior Side Yard abutting any railway corridor	7.5 m	7.5 m	n/a
Minimum Rear Yard	3.0 m	3.0 m	4.9 m
Minimum Rear Yard abutting a lot in any Residential Zone, Institutional (I) Zone, or Community Use (CU) Zone	15.0 m	15.0 m	n/a
Minimum Rear Yard abutting any railway corridor	7.5 m	7.5 m	n/a
Maximum Height	n/a	18.5 m	24.91 m*
Minimum Landscaping Coverage	10%	10%	12.47%
Minimum Landscaping for Surface Parking /For any employment zone to any road	3.0 m	3.0 m	0.4 m
Surface Parking Area Setbacks from Building	1.8 m	1.8 m	2.13 m
Minimum Parking Spaces	Commercial Self-storage: 1.0 per 100.0 m² net floor area, to a maximum minimum requirement of 8 parking spaces GFA = 16,686 m² Minimum Parking Required = 8	Commercial Self-storage: 1.0 per 100.0 m² net floor area, to a maximum minimum requirement of 8 parking spaces GFA = 16,686 m² Minimum Parking Required = 8	11
Minimum Drive Aisle Width (Two way)	6 m	6 m	6.9 m
Minimum Drive Aisle Width (One way angle to a parking space is greater than or equal to 60 degrees)	5.5 m	5.5 m	6.0 m
Minimum Drive Aisle Width (One way angle to a parking space is greater than or equal to 40 degrees)	4 m	4 m	n/a
Minimum Loading Spaces	n/a	n/a	1
Loading Space Minimum Width (m)	3.5 m	3.5 m	3.5 m
Loading Space Minimum Length (m)	12 m	12 m	12 m
Loading Space Minimum Height (m)	4.2 m	4.2 m	4.2 m

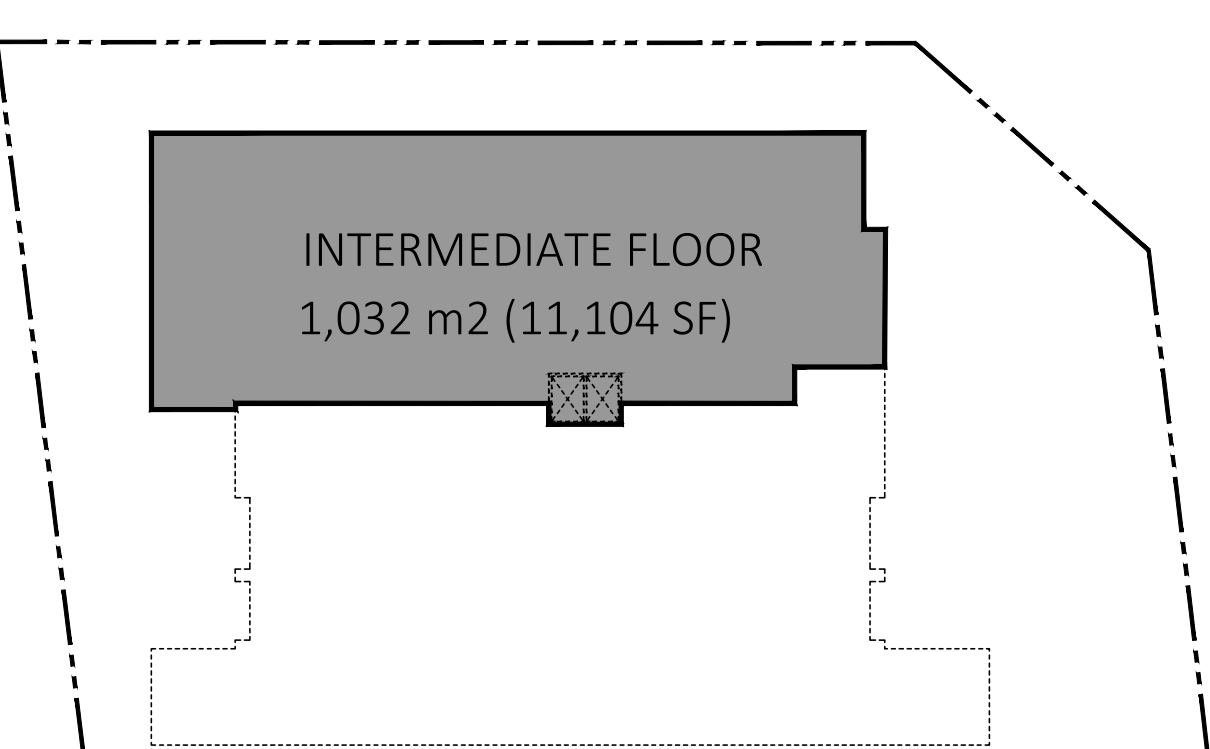
1 ARCHITECTURAL SITE PLAN
A101 SCALE: 1:200



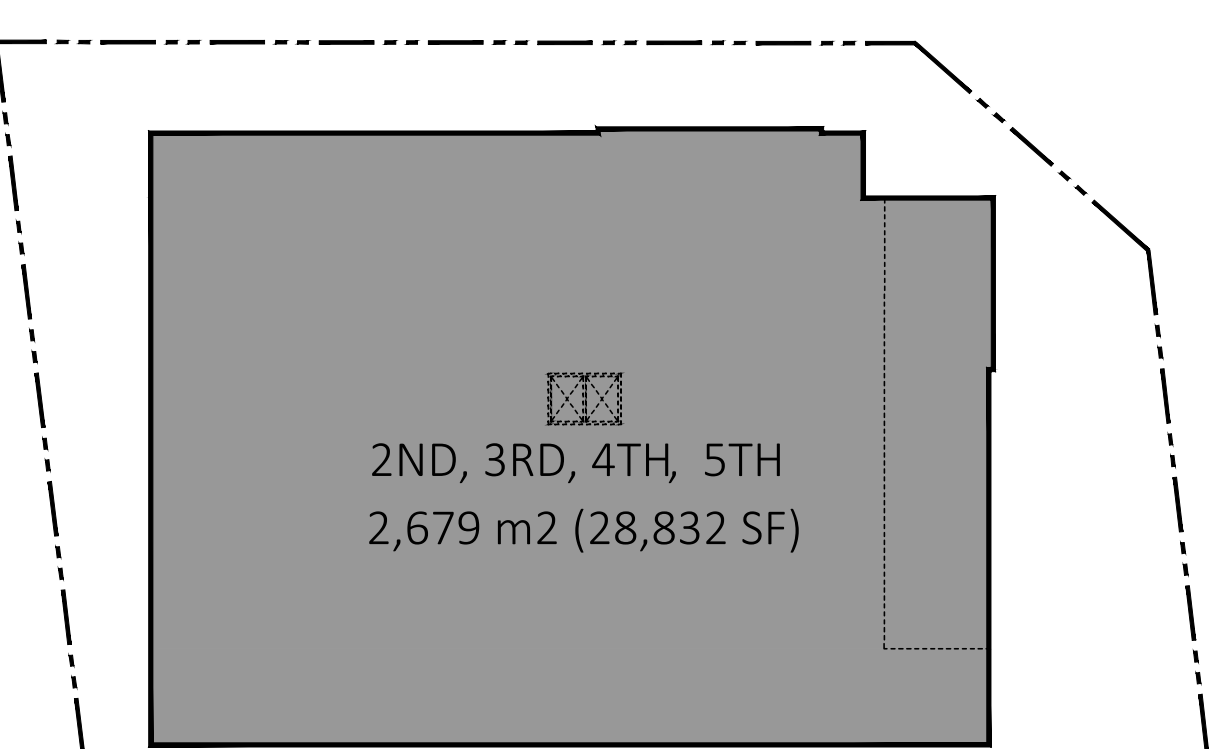
2 SEMI-BASEMENT
A101 N.T.S.



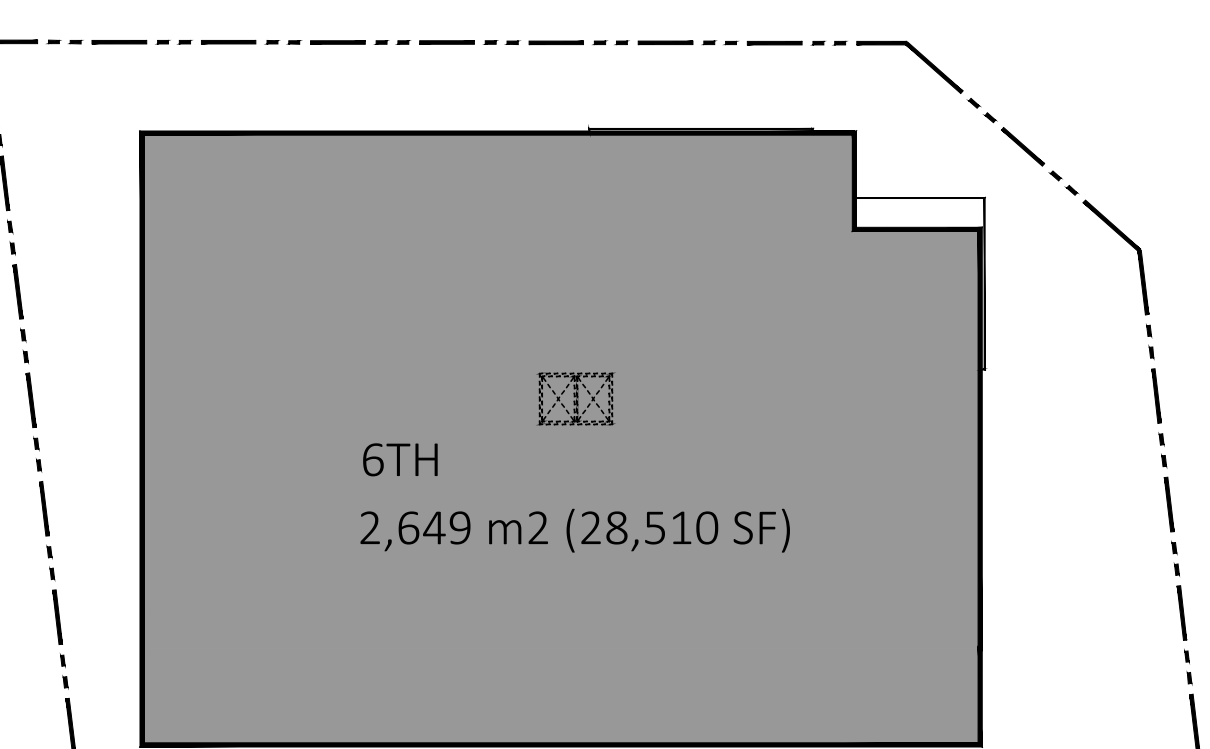
3 GROUND FLOOR PLATE
A101 N.T.S.



4 INTERMEDIATE FLOOR PLATE
A101 N.T.S.

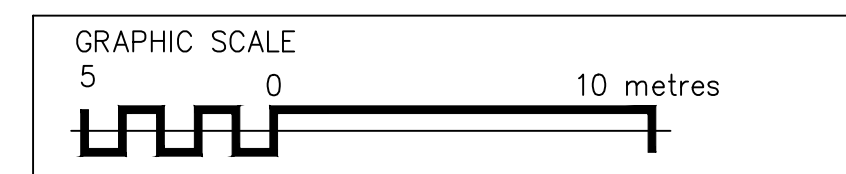


5 TYPICAL SECOND, THIRD, FOURTH & FIFTH FLOOR PLATE
A101 N.T.S.



6 SIXTH FLOOR PLATE
A101 N.T.S.

NOTE: BOULEVARD WITHIN THE PUBLIC RIGHT-OF-WAY WILL BE RESTORED TO THE SATISFACTION OF CITY'S TRANSPORTATION AND ENGINEERING



SITE PLAN BASED ON SURVEY BY CUNNINGHAM MCCONNELL LIMITED ONTARIO LAND SURVEYORS - DRAFT R-PLAN PLAN 3-19-4, DATED MAY 4, 2023, AND PLAN 3-19-3 RECEIVED MAY 4, 2023

LEGEND

- PROPOSED BUILDING
- EXISTING BUILDINGS ON SITE
- LANDSCAPED AREA
- CONCRETE/SIDEWALK
- BARRIER FREE PARKING CLEARANCE
- CURB
- BARRIER FREE PARKING
- BARRIER FREE PARKING
- EXISTING CONCRETE/SIDEWALK
- SIAMESE CONNECTION
- ENTRANCE AND / OR EXIT DOOR
- FIRE HYDRANT
- MANHOLE COVER
- FIRE ROUTE ACCESS SIGN MOUNTED ON POLE

DESIGNER:

CIVIL:

ELECTRICAL:

MECHANICAL:

STRUCTURAL:

PLANNER AND LANDSCAPE:

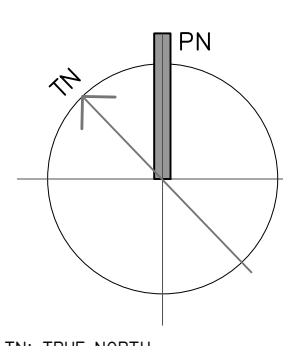
CLIENT LOGO:



CLIENT:

FIRST GULF
351 KING ST. E. 13TH FLOOR
TORONTO, ON, M5A 0L6
TEL: 416 491 7778

PROJECT NORTH:



ARCHITECT'S SEAL:



TRUE NORTH:



WPT PROJECT #: 2022-0026-01 MUNICIPAL #: CLIENT PROJECT #: CLIENT CONTRACT #:

PROJECT NAME AND LOCATION:
ADVANCED SELF-STORAGE
2515 ROYAL WINDSOR DR.
OAKVILLE, ON

SHEET NAME:
ARCHITECTURAL SITE PLAN

SCALE: 1:200 SHEET #: A101
DRAWN BY: SGM