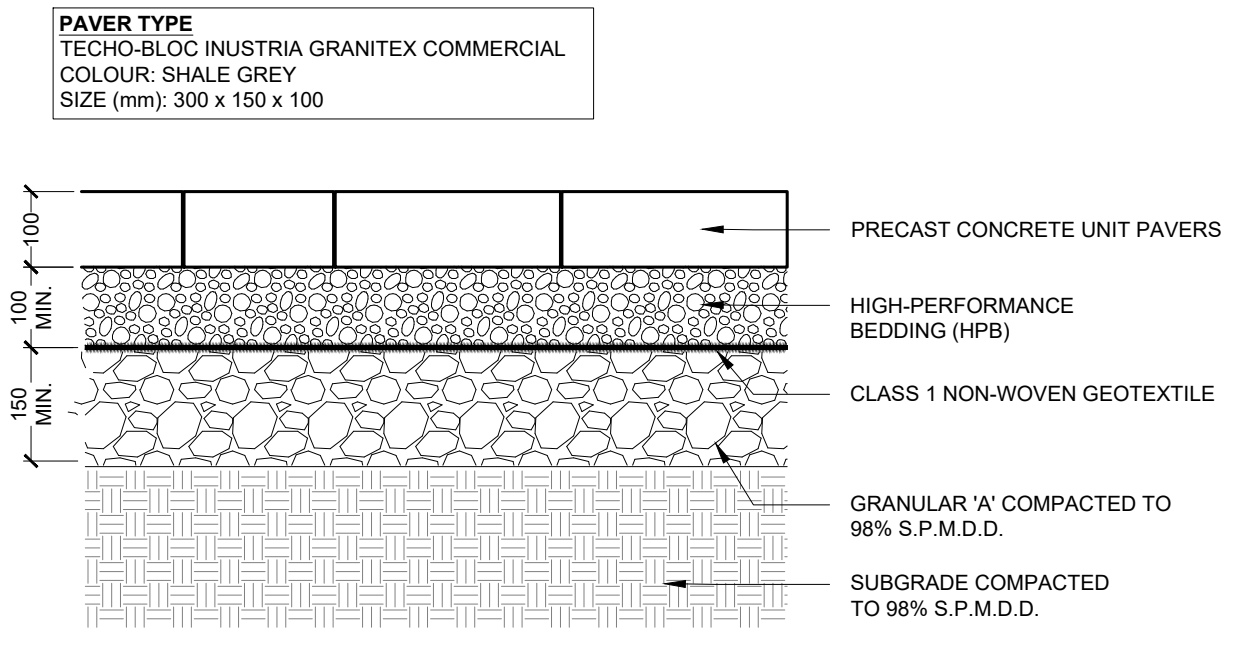


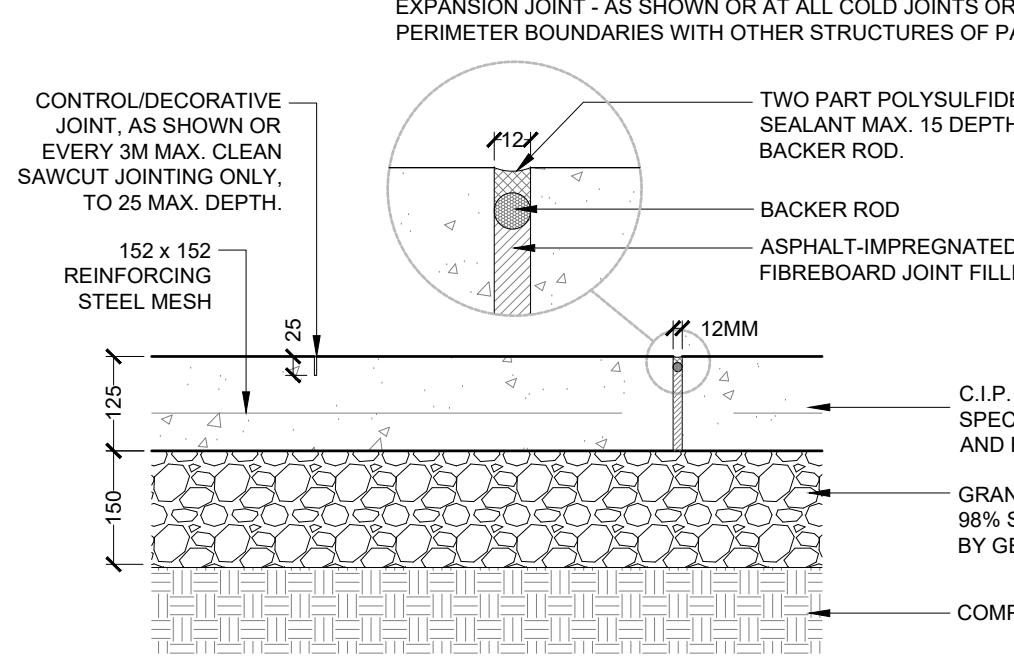
- NOTE:
1. PAVING STONES SHALL HAVE A FLUSH AND STABLE PAVING CONDITION WITH NO SURFACE DEFLECTION.
2. JOINTS SHALL BE NO GREATER THAN 5mm WIDE AND EXPANSION JOINTS NO HIGHER THAN 13mm.



① THRESHOLD UNIT PAVING
Scale 1:10

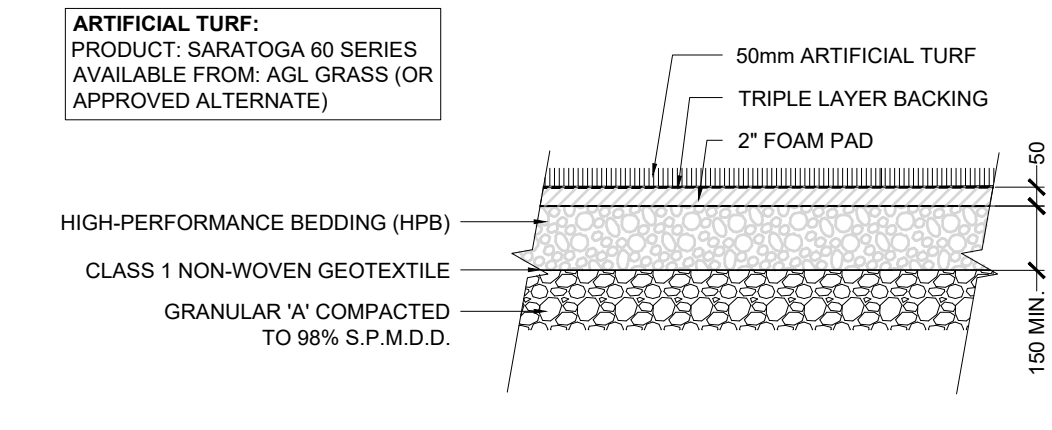
NOTES:
1. SURFACE TREATMENT VARIES. REFER TO LANDSCAPE PLAN AND PAVING TYPE.

- PAVING TYPE:
• FIELD PAVING: NATURAL COLOUR WITH BRUSH FINISH
• PLAZA PAVING (TYPE 1): NATURAL COLOUR LIGHT SANDBLAST FINISH
• PLAZA PAVING (TYPE 2): NATURAL COLOUR WITH MEDIUM SANDBLAST FINISH
• PLAZA PAVING (TYPE 3): INTEGRAL COLOUR WITH MEDIUM SANDBLAST FINISH

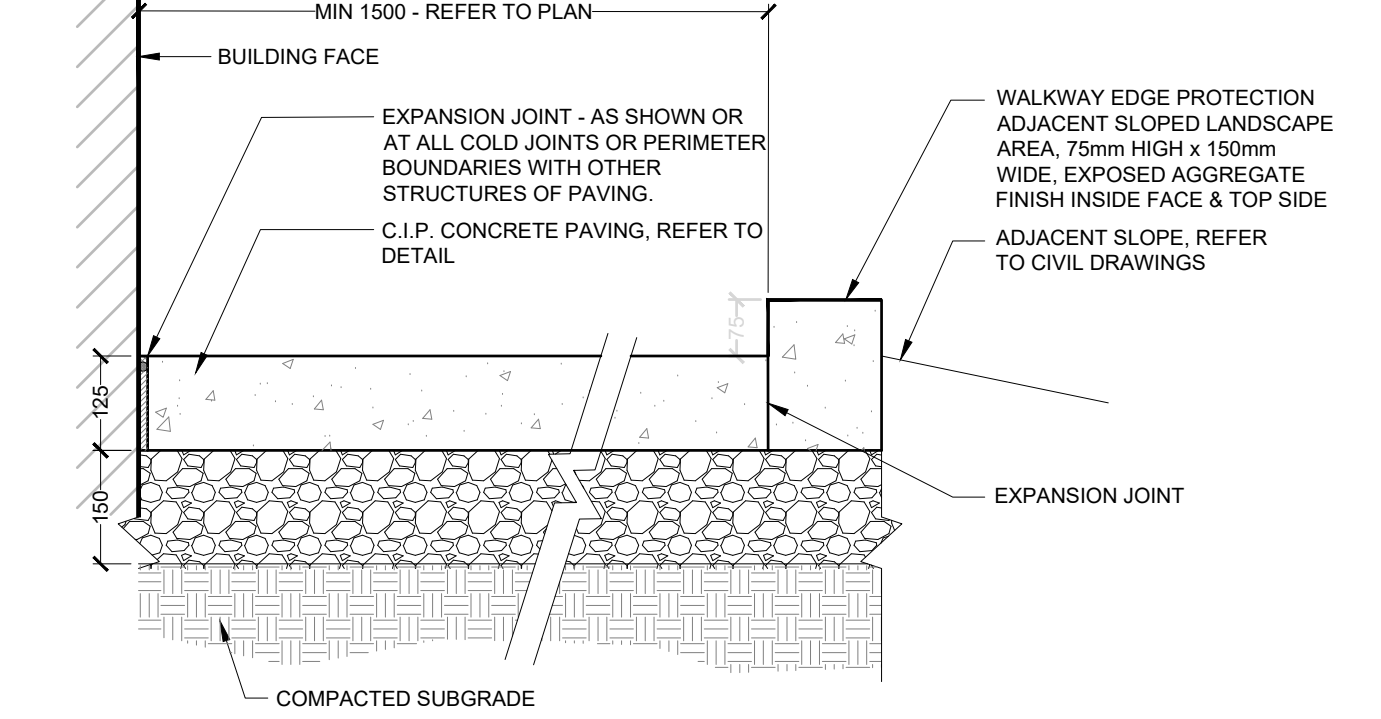


② CONCRETE PAVING
Scale 1:10

③ ARTIFICIAL TURF
1:20

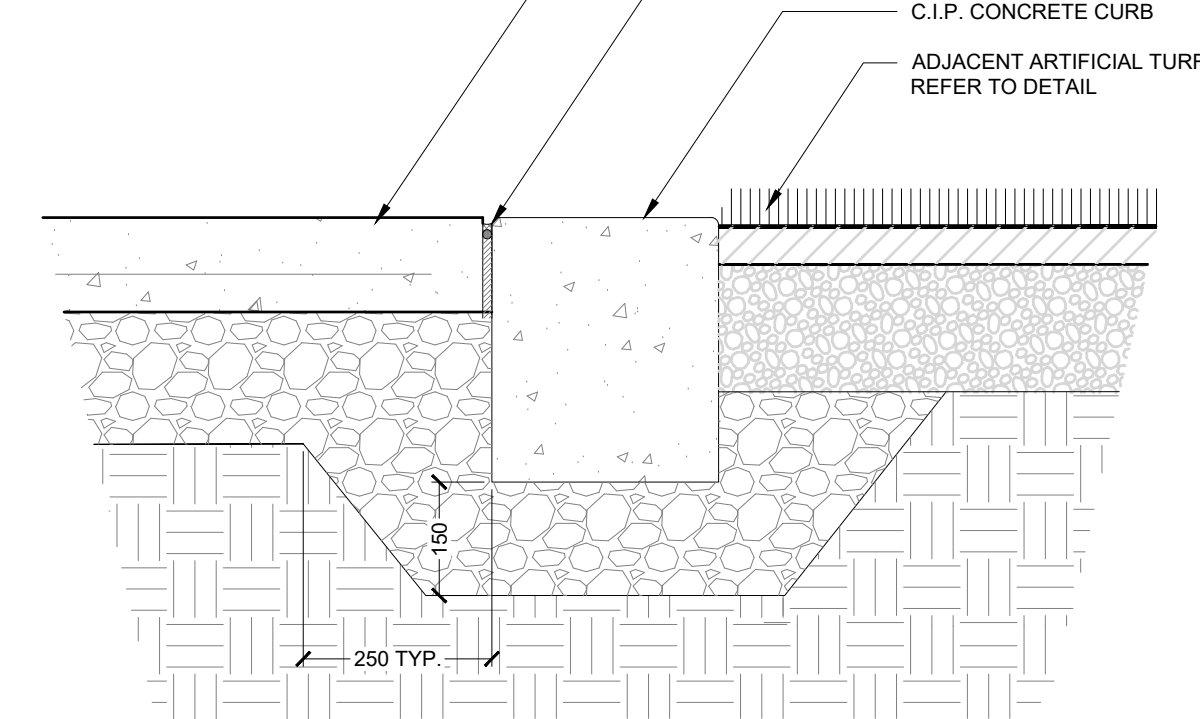


NOTES:
1. EDGE PROTECTION TO PROVIDE COLOUR/TONAL CONTRAST (70% VARIANCE) FROM ADJACENT WALKWAY AS PER CODES.
MIN 1500 - REFER TO PLAN -
EXPANSION JOINT - AS SHOWN OR AT ALL COLD JOINTS OR PERIMETER BOUNDARIES WITH OTHER STRUCTURES OF PAVING.
WALKWAY EDGE PROTECTION ADJACENT SLOPED LANDSCAPE AREA. 75mm HIGH x 150mm WIDE. EXPOSED AGGREGATE FINISH INSIDE FACE & TOP SIDE ADJACENT SLOPE. REFER TO CIVIL DRAWINGS.
EXPANSION JOINT

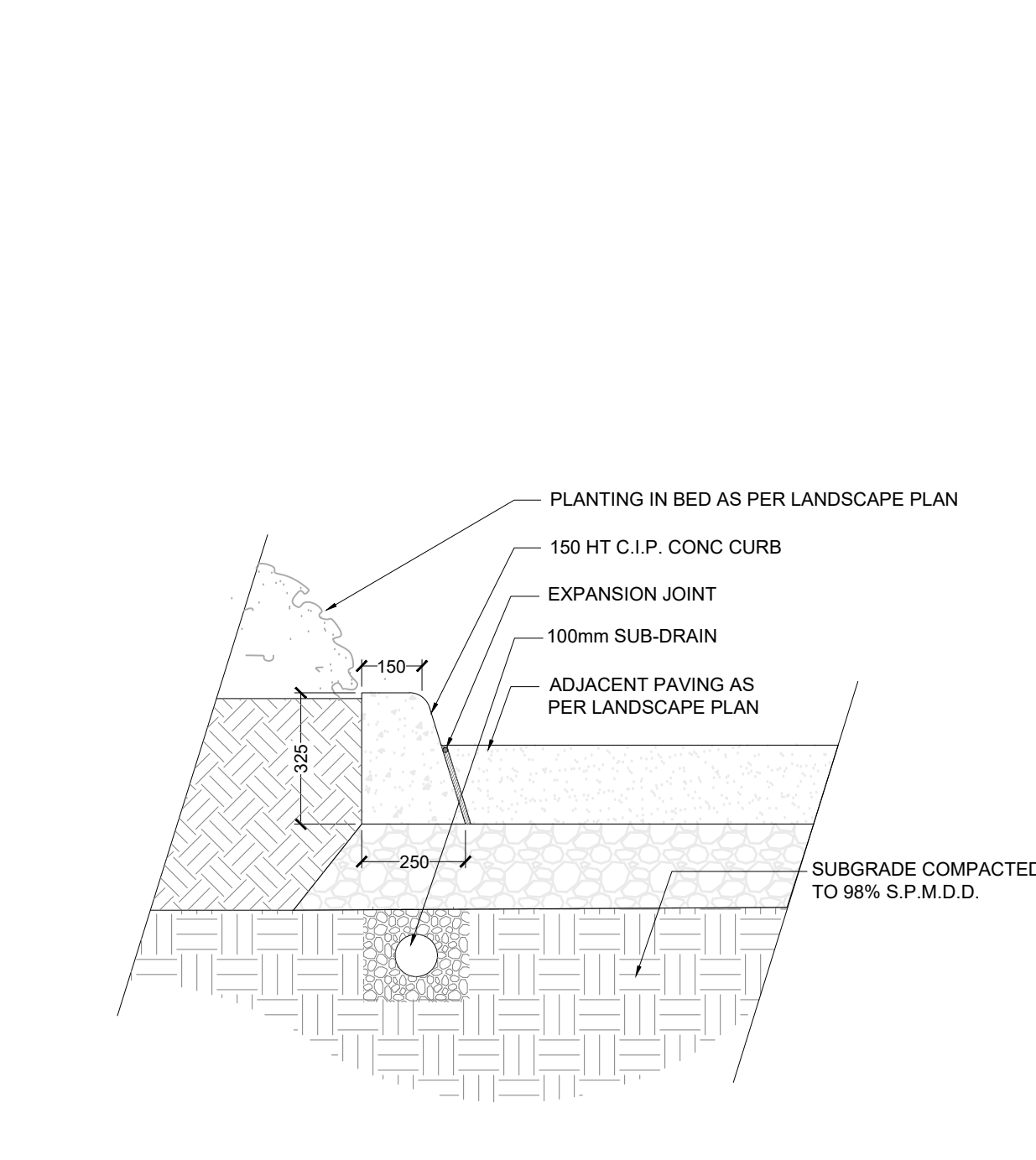


④ CONCRETE PAVING EDGE PROTECTION
Scale 1:10

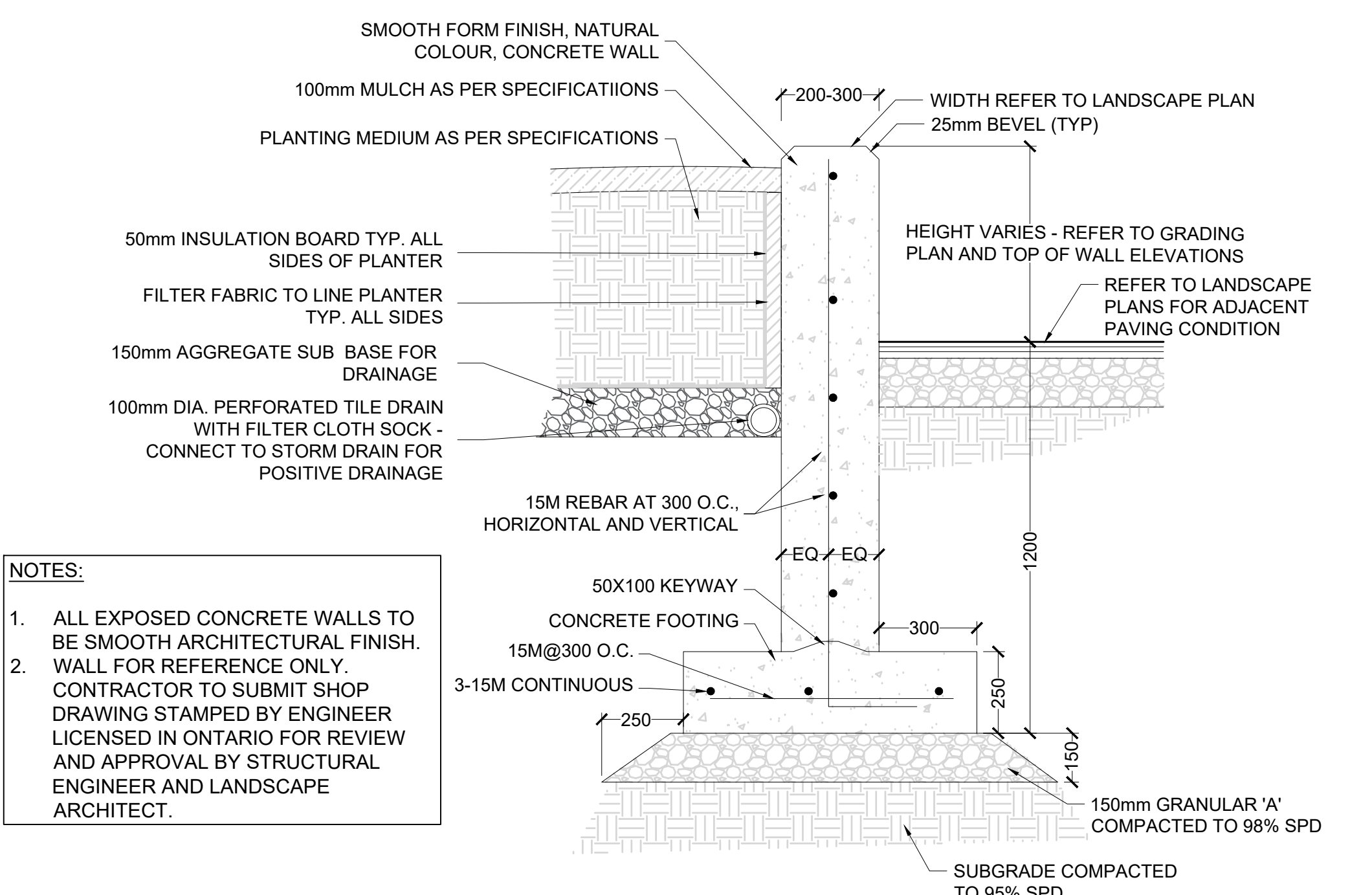
ADJACENT CONCRETE PAVING. REFER TO DETAIL -
EXPANSION JOINT
C.I.P. CONCRETE CURB
ADJACENT ARTIFICIAL TURF. REFER TO DETAIL.



⑤ FLUSH CONCRETE CURB
Scale 1:10



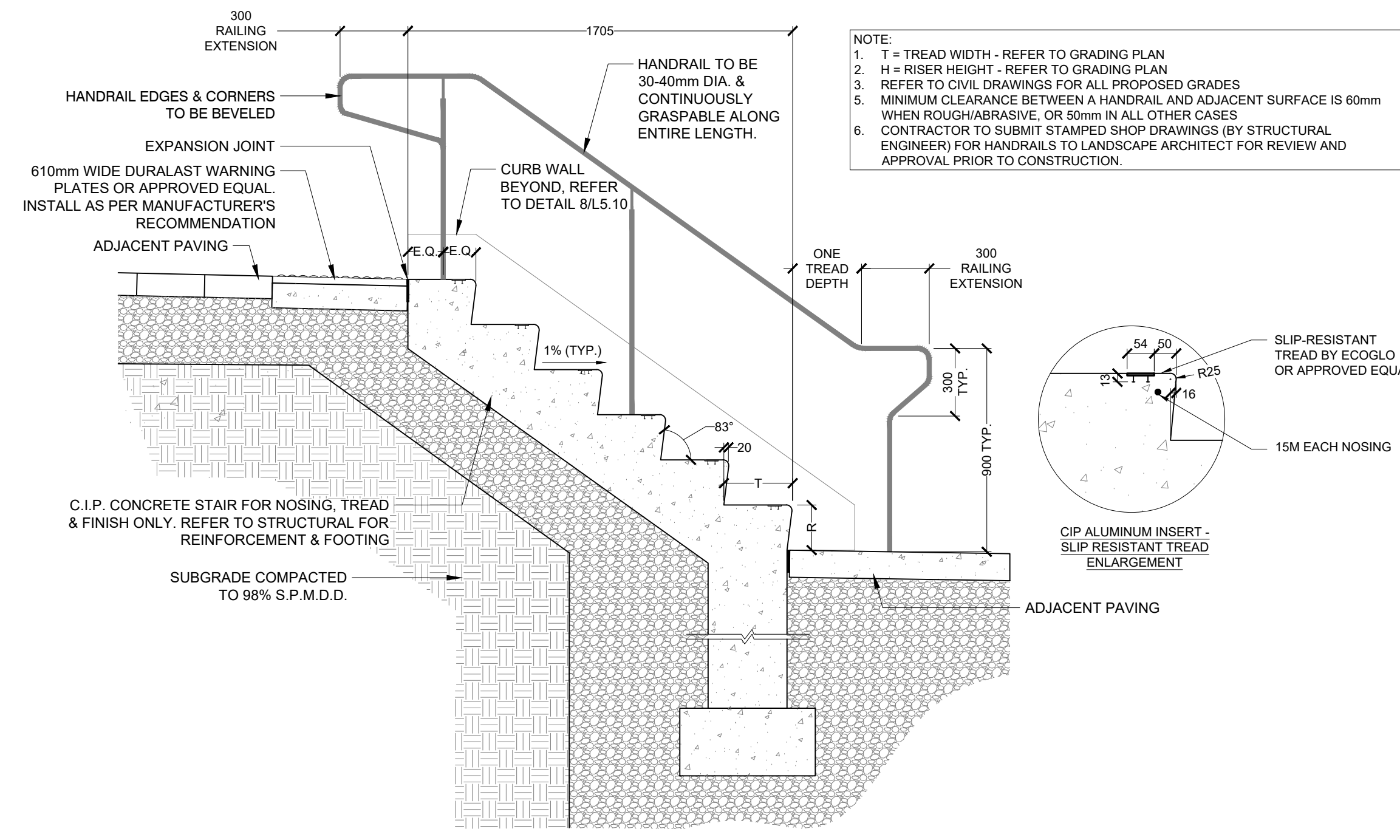
⑥ CONCRETE PLANTER CURB - TYP.
1:15



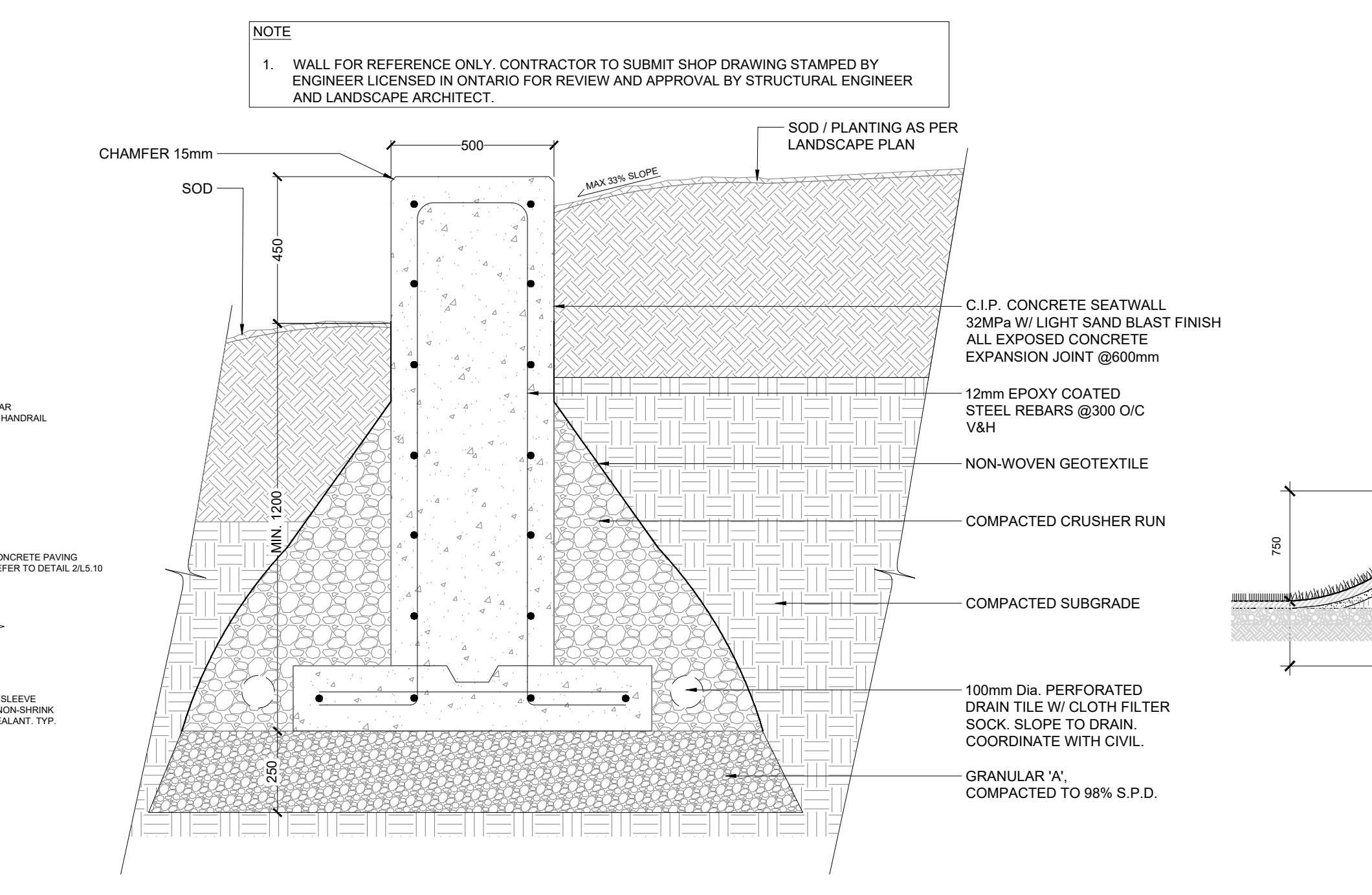
⑦ C.I.P. CONCRETE PLANTER WALL - TYP.

- NOTES:
1. ALL EXPOSED CONCRETE SURFACES TO BE SMOOTH ARCHITECTURAL FINISH.
2. CONTRACTOR TO SUPPLY SHOP DRAWINGS APPROVED BY STRUCTURAL ENGINEER PRIOR TO CONSTRUCTION.

⑧ C.I.P. CONCRETE CURB WALL (FRONT ENTRANCE)

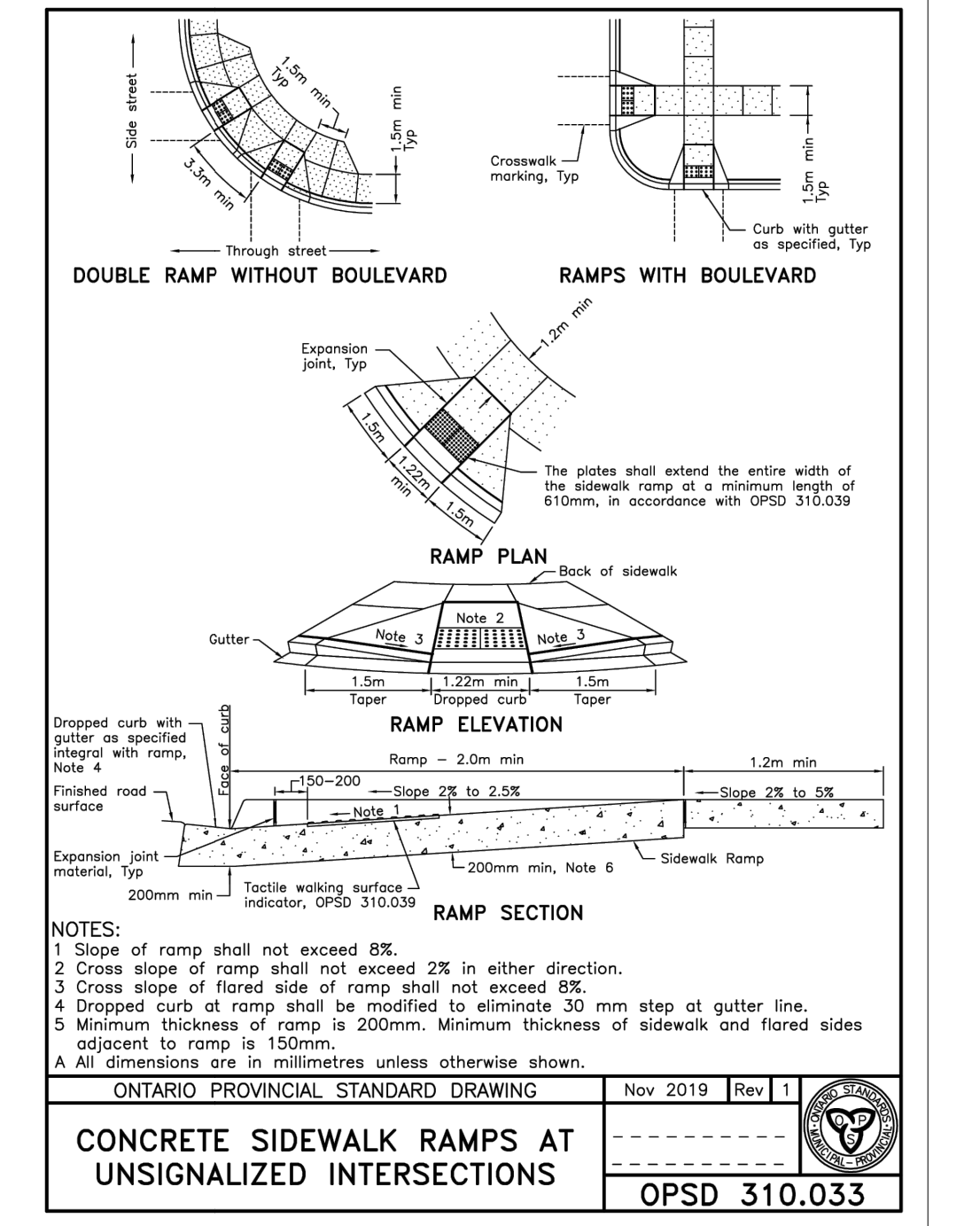
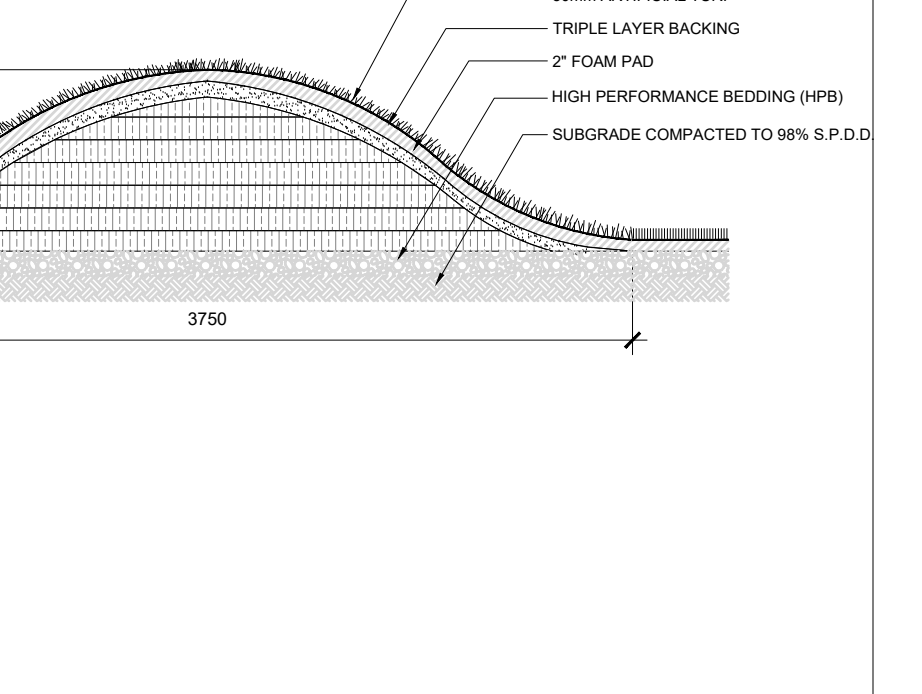


⑨ C.I.P. CONCRETE STAIR

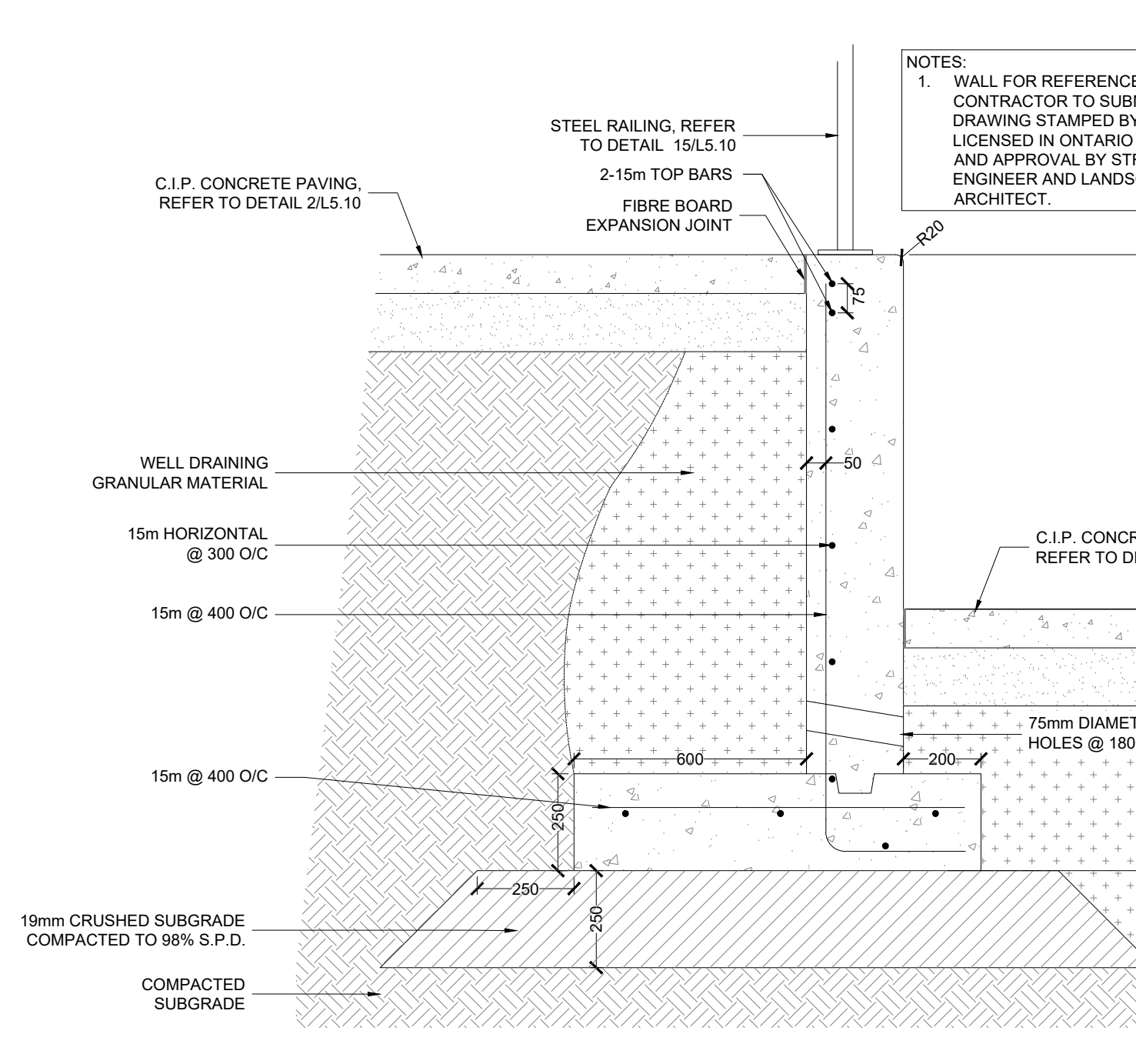


⑪ BENCH (TYPE 4) - AMPHITHEATRE SEATING

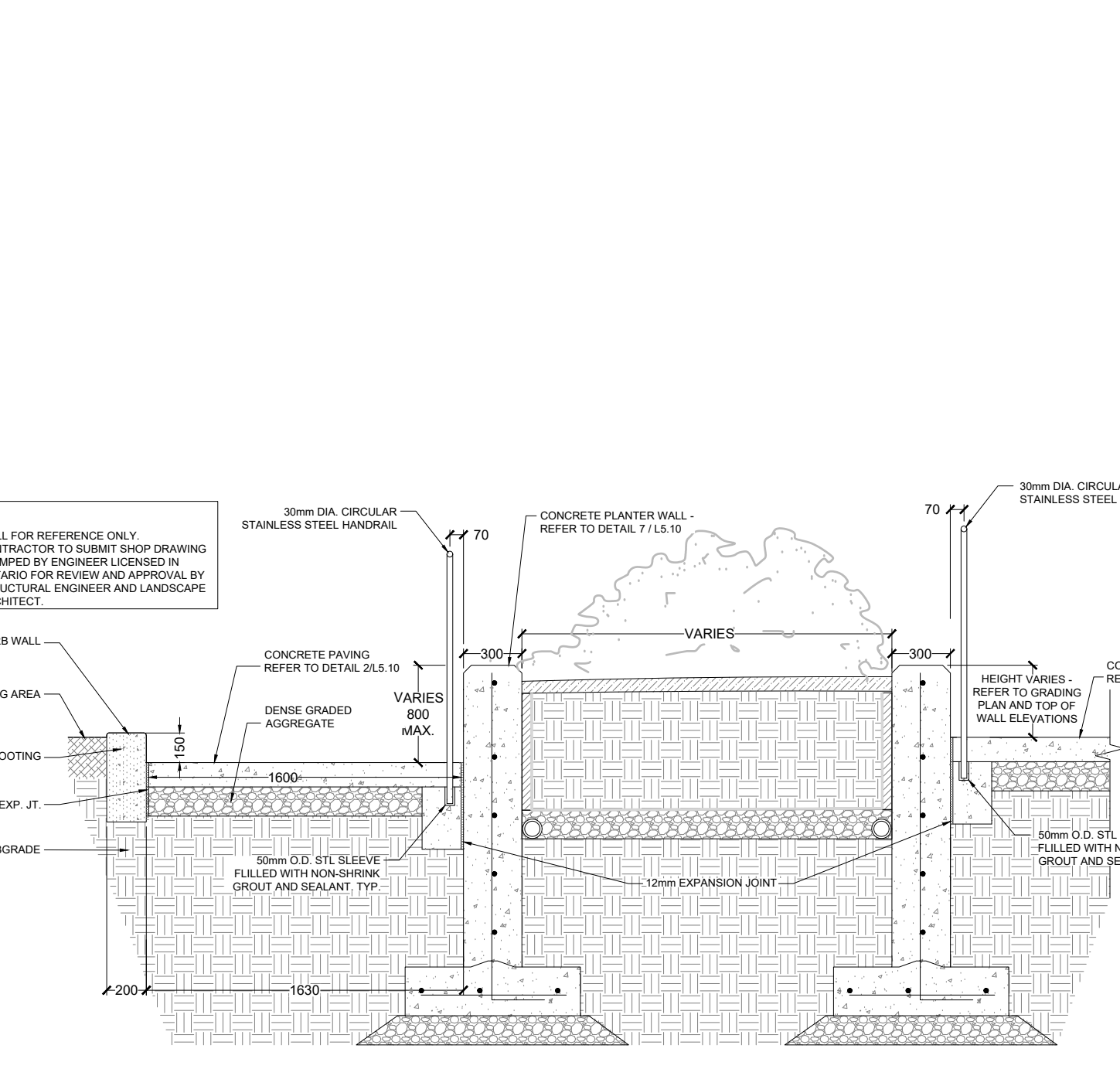
⑫ CHILDREN'S PLAY MOUND



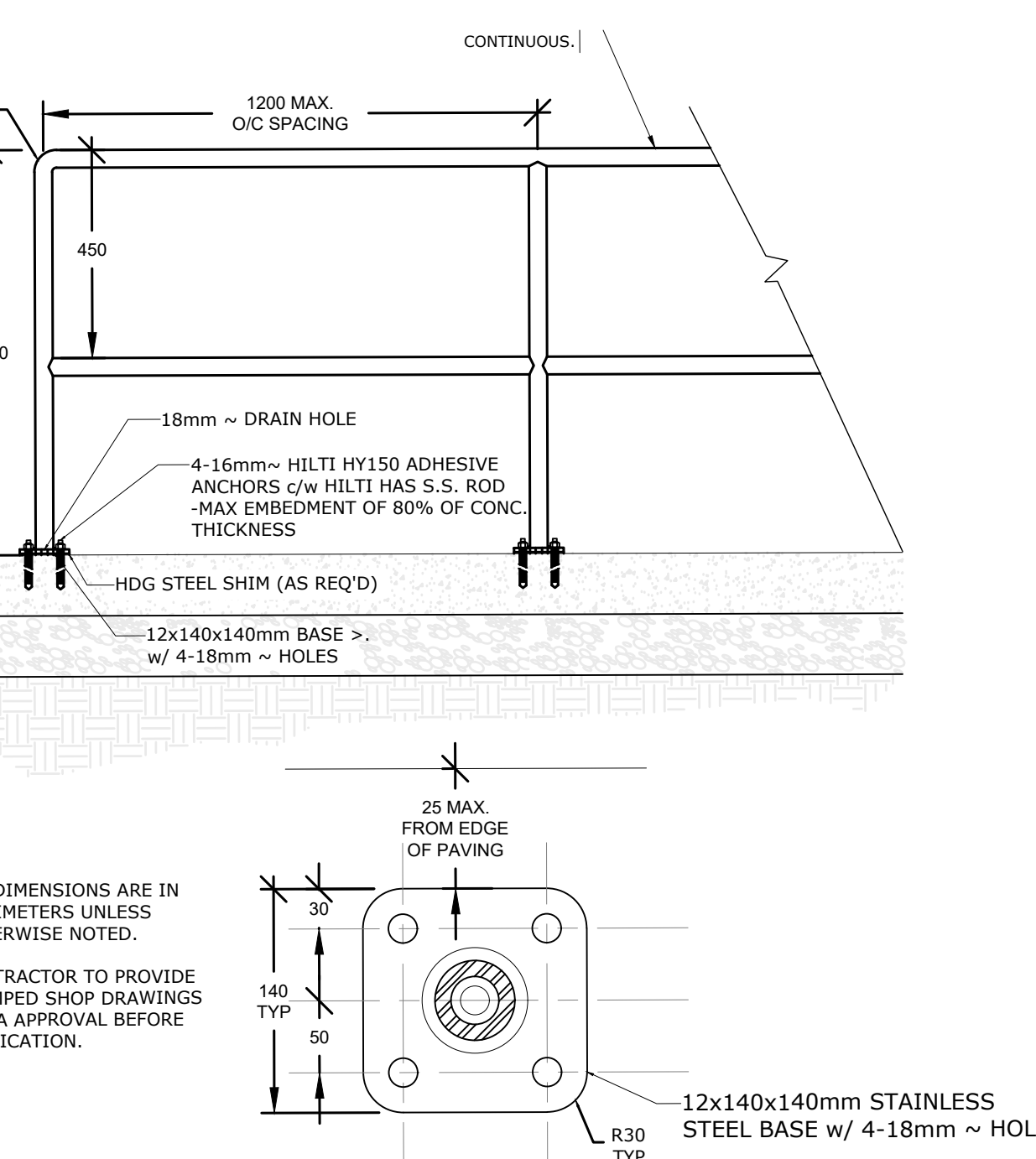
⑬ RAMP WITH TACTILE PLATE



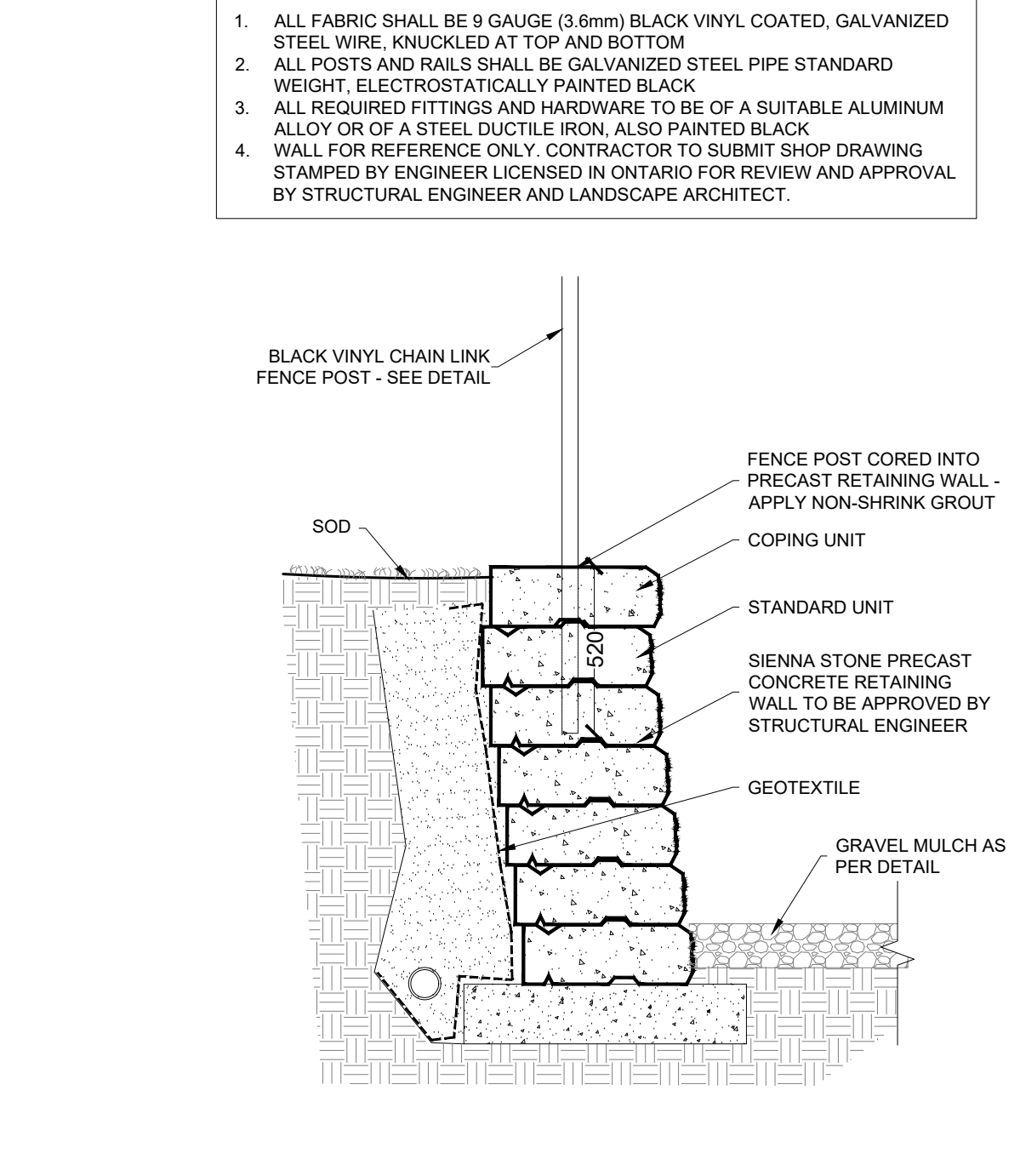
⑭ C.I.P. CONCRETE RETAINING WALL (POOL RAMP)



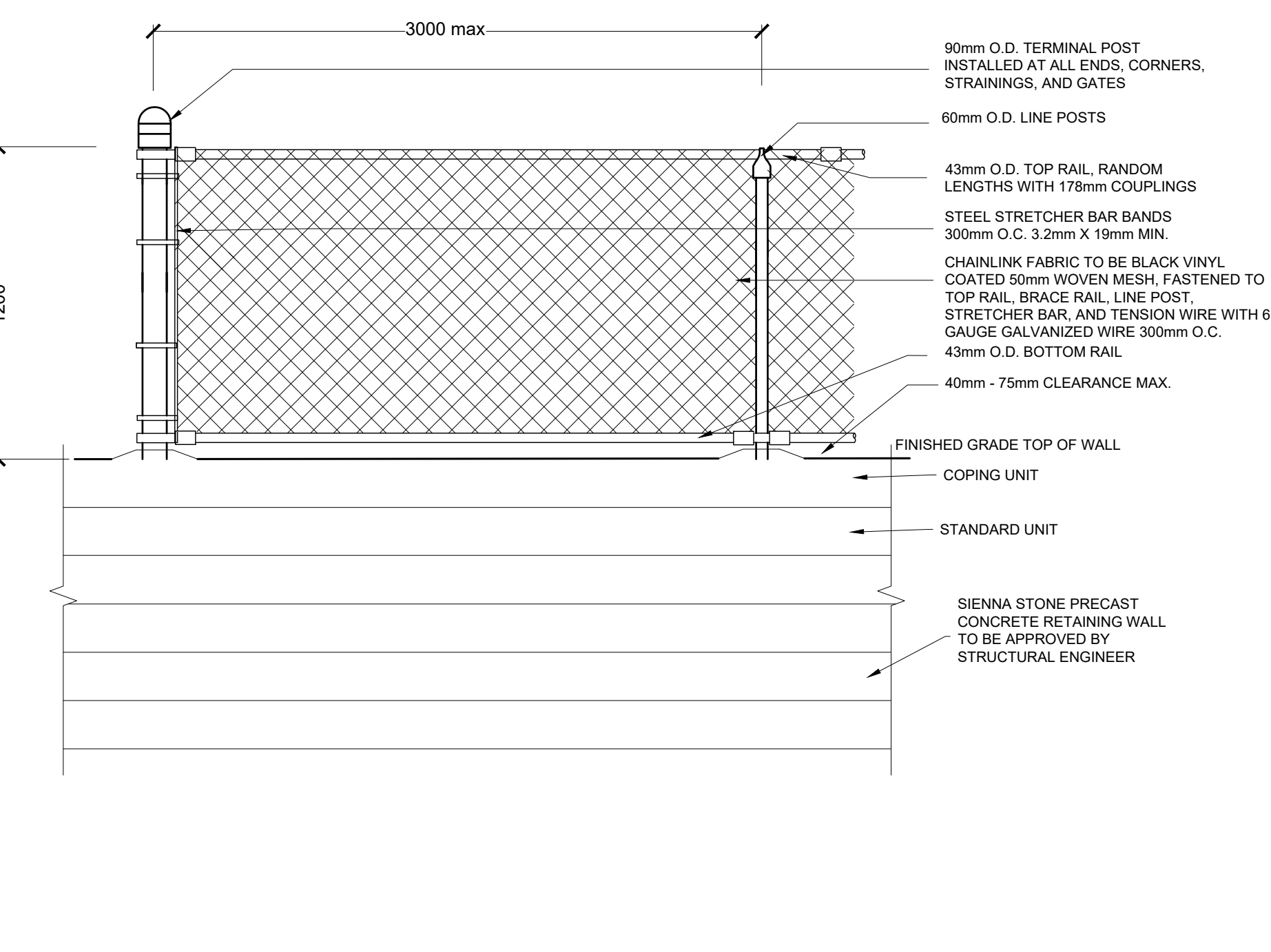
⑩ C.I.P. CONCRETE RAMP (FRONT ENTRANCE)



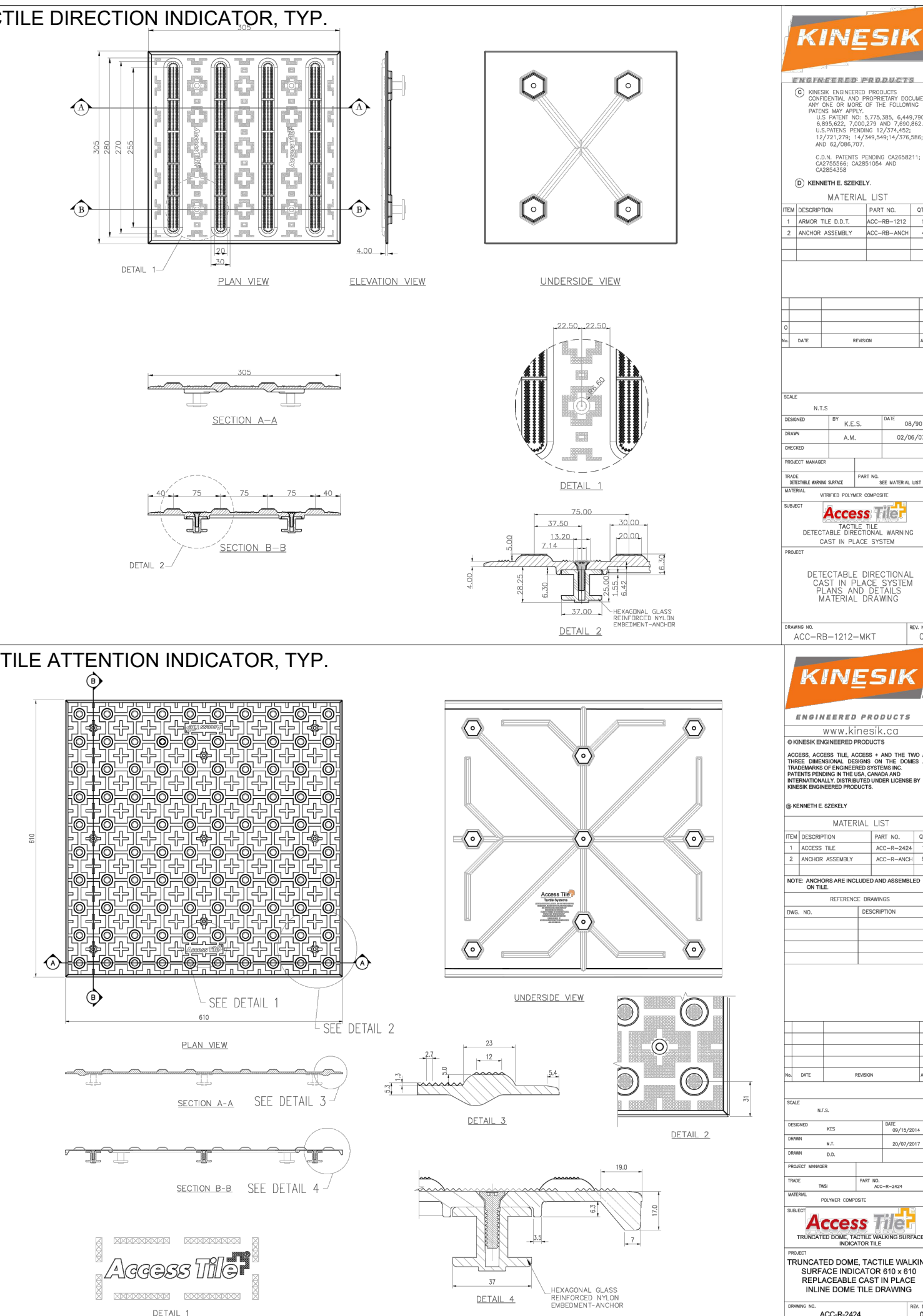
⑮ RAILING AT CONCRETE RETAINING WALL (RAMP)



⑯ CHAIN LINK FENCE CORED INTO RETAINING WALL
Scale 1:20



⑰ ACCESSIBLE PATH - TACTILE INDICATOR LAYOUT AND DETAIL
N.T.S.



Legend

- GENERAL NOTES:
1. Drawings not to be used for construction unless authorized by the Landscape Architect.
2. Contractor shall report any discrepancies between the drawings and site conditions prior to commencement of the work.
3. All utility locations are the responsibility of the Contractor. Hand dig within the limits recommended by the service utility. Utility conflicts with proposed tree locations must be reported immediately to the Landscape Architect.
4. Sixteen Mile Community Centre & Library base drawing provided by Diamond Schmidt Architects.
5. For Sixteen Mile Community Centre grading information refer to drawing by MTE Consultants.
6. North Park Sports Park base drawings provided by The MBTW Group.
7. Landscape drawings show engineering information for design purposes only. Do not construct engineering works from these drawings.

HARDSCAPE DETAILS
North Park Development: Community Centre, Library and Sports Park, Oakville, ON

| DATE | ISSUE | BY |
|--------------|-------------------------------------|----|
| Feb 4 2022 | Issued for Site Plan Application 1 | BR |
| Jun 10 2022 | Issued for Site Plan Application 2 | BR |
| Jul 11 2022 | Issued for 30% CD | BR |
| Sept 12 2022 | Issued for Committee of Adjustments | NZ |
| Sept 21 2022 | Issued for 60% CD | NZ |
| Nov 14 2022 | Issued for Tender | NZ |
| Dec 15 2022 | Issued for Site Plan Application 3 | NZ |
| DATE | REVISIONS | BY |
| Jan 27 2022 | Issued for Coordination | BR |
| May 2 2022 | Issued for Coordination | NZ |



Equiparc
EP 1791 Bench

SPECIFICATIONS
Frame: 60mm (1 1/4") and 13mm (1/2") aluminum laser cuts and flats and 48mm (1 7/8") aluminum tube
Support: 10mm (3/8") and 13mm (1/2") hot-dipped galvanized steel laser cuts and flats
Finish: Polymer powder coat
Slats: PE/AT, 25mm X 75mm (1" X 3")
C/P: Plastic, 60mm X 75mm (2" X 3")
Fasteners: Stainless steel

COVERINGS
YRSU: Clear recycled plastic
SRPU: Sand recycled plastic
CRPU: Clear recycled plastic
CWRPU: Cedar recycled plastic
WRPU: Wood recycled plastic

OPTIONS
DB: Double backrest
LB: Left backrest when seated
RB: Right backrest when seated
A: Set of three armrests
CA: Center armrest
LA: Left armrest when seated
RA: Right armrest when seated
TT to T4: Tapered top possible positions

Depth: 735mm (29") Length: 1765mm (69 1/2") Height: 445mm (17 3/4") Weight: 73 kg (160 lbs)



Equiparc
EP 1792 Bench

SPECIFICATIONS
Frame: 60mm (1 1/4") and 13mm (1/2") aluminum laser cuts and flats and 48mm (1 7/8") aluminum tube
Support: 10mm (3/8") and 13mm (1/2") hot-dipped galvanized steel laser cuts and flats
Finish: Polymer powder coat
Slats: PE/AT, 25mm X 75mm (1" X 3")
C/P: Plastic, 60mm X 75mm (2" X 3")
Fasteners: Stainless steel

COVERINGS
YRSU: Clear recycled plastic
SRPU: Sand recycled plastic
CRPU: Clear recycled plastic
CWRPU: Cedar recycled plastic
WRPU: Wood recycled plastic

OPTIONS
DB: Double backrest
LB: Left backrest when seated
RB: Right backrest when seated
A: Set of three armrests
CA: Center armrest
LA: Left armrest when seated
RA: Right armrest when seated
TT to T4: Tapered top possible positions

Depth: 1132mm (45 3/4") Length: 1765mm (69 1/2") Height: 445mm (17 3/4") Weight: 118 kg (260 lbs)



Equiparc
EP 3790-RU-DOUBLE Waste and recycling receptacle

SPECIFICATIONS
Frame: 60mm (1 1/4") hot-dipped galvanized steel flats
Support: 10mm (3/8") and 13mm (1/2") hot-dipped galvanized steel laser cuts and flats
Finish: Polymer powder coat
Slats: PE/AT, 25mm X 75mm (1" X 3")
C/P: Plastic, 60mm X 75mm (2" X 3")
Fasteners: Stainless steel and zinc plated

COVERINGS
YRSU: Clear recycled plastic
SRPU: Sand recycled plastic
CRPU: Clear recycled plastic
CWRPU: Cedar recycled plastic
WRPU: Wood recycled plastic

INCLUDING
DB: Double backrest
LB: Left backrest when seated
RB: Right backrest when seated
A: Set of three armrests
CA: Center armrest
LA: Left armrest when seated
RA: Right armrest when seated
TT to T4: Tapered top possible positions

Depth: 505mm (20") Length: 1045mm (41 1/8") Height: 607mm (23 9/16") Weight: 84 kg (185 lbs)



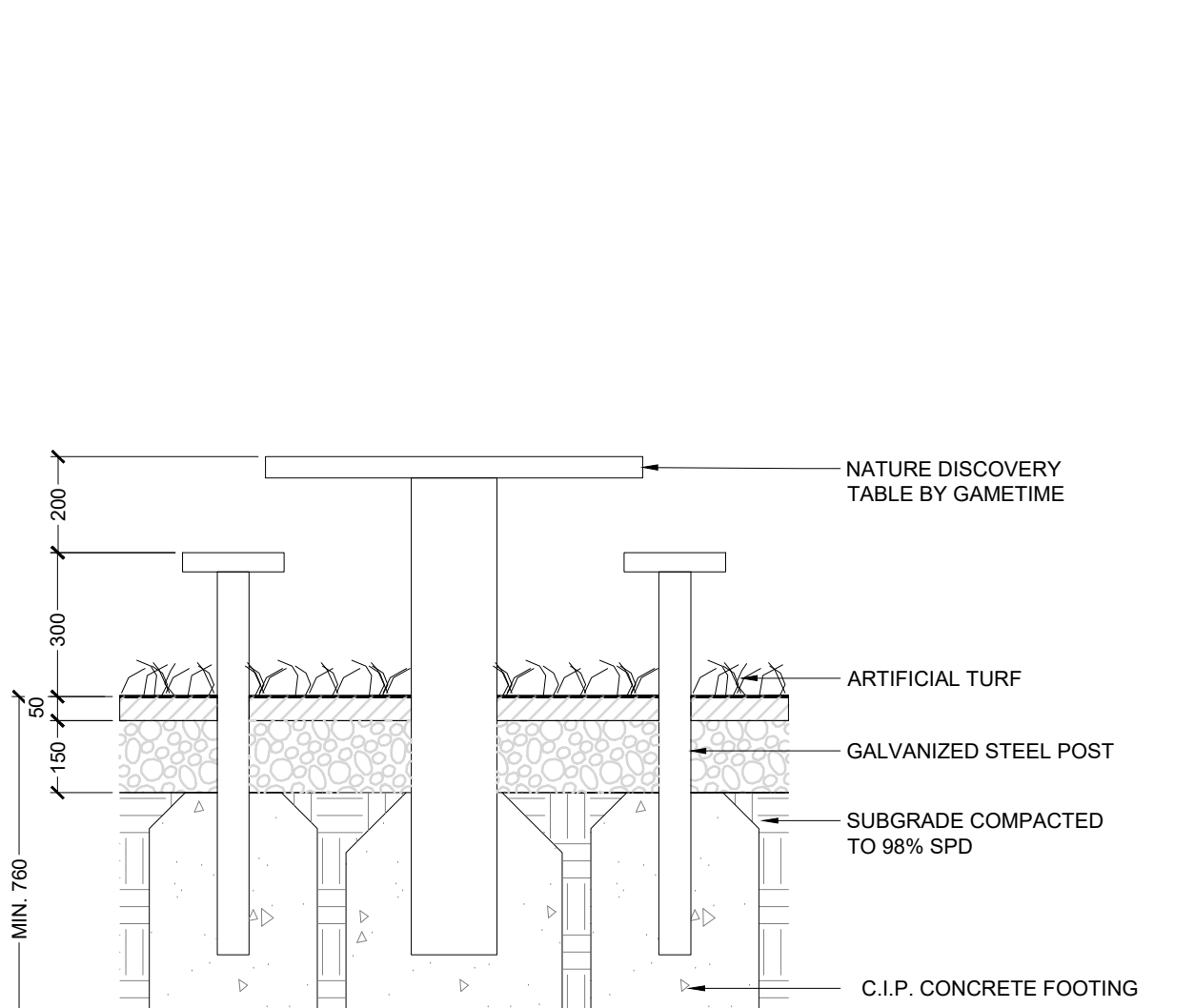
Equiparc
EP 5790 Bike rack

SPECIFICATIONS
Frame: 60mm (1 1/4") and 13mm (1/2") aluminum laser cuts and flats and 48mm (1 7/8") aluminum tube
Support: 10mm (3/8") and 13mm (1/2") hot-dipped galvanized steel laser cuts and flats
Finish: Polymer powder coat
Slats: PE/AT, 25mm X 75mm (1" X 3")
C/P: Plastic, 60mm X 75mm (2" X 3")
Fasteners: Stainless steel and zinc plated

COVERINGS
YRSU: Clear recycled plastic
SRPU: Sand recycled plastic
CRPU: Clear recycled plastic
CWRPU: Cedar recycled plastic
WRPU: Wood recycled plastic

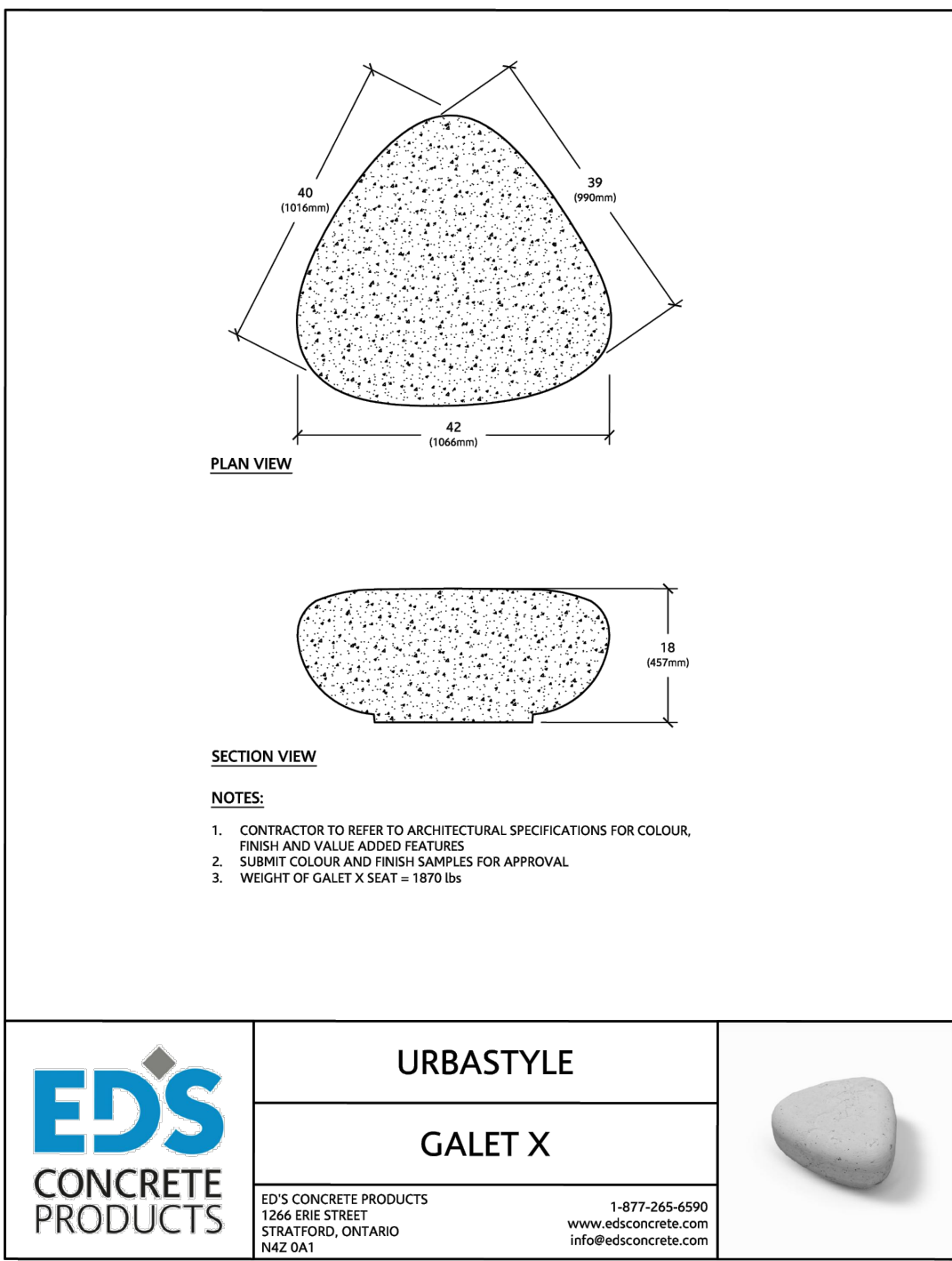
INCLUDING
DB: Double backrest
LB: Left backrest when seated
RB: Right backrest when seated
A: Set of three armrests
CA: Center armrest
LA: Left armrest when seated
RA: Right armrest when seated
TT to T4: Tapered top possible positions

Depth: 140mm (5 1/2") Length: 381mm (15") Height: 526mm (20 7/8") Weight: 7 kg (15 lbs)

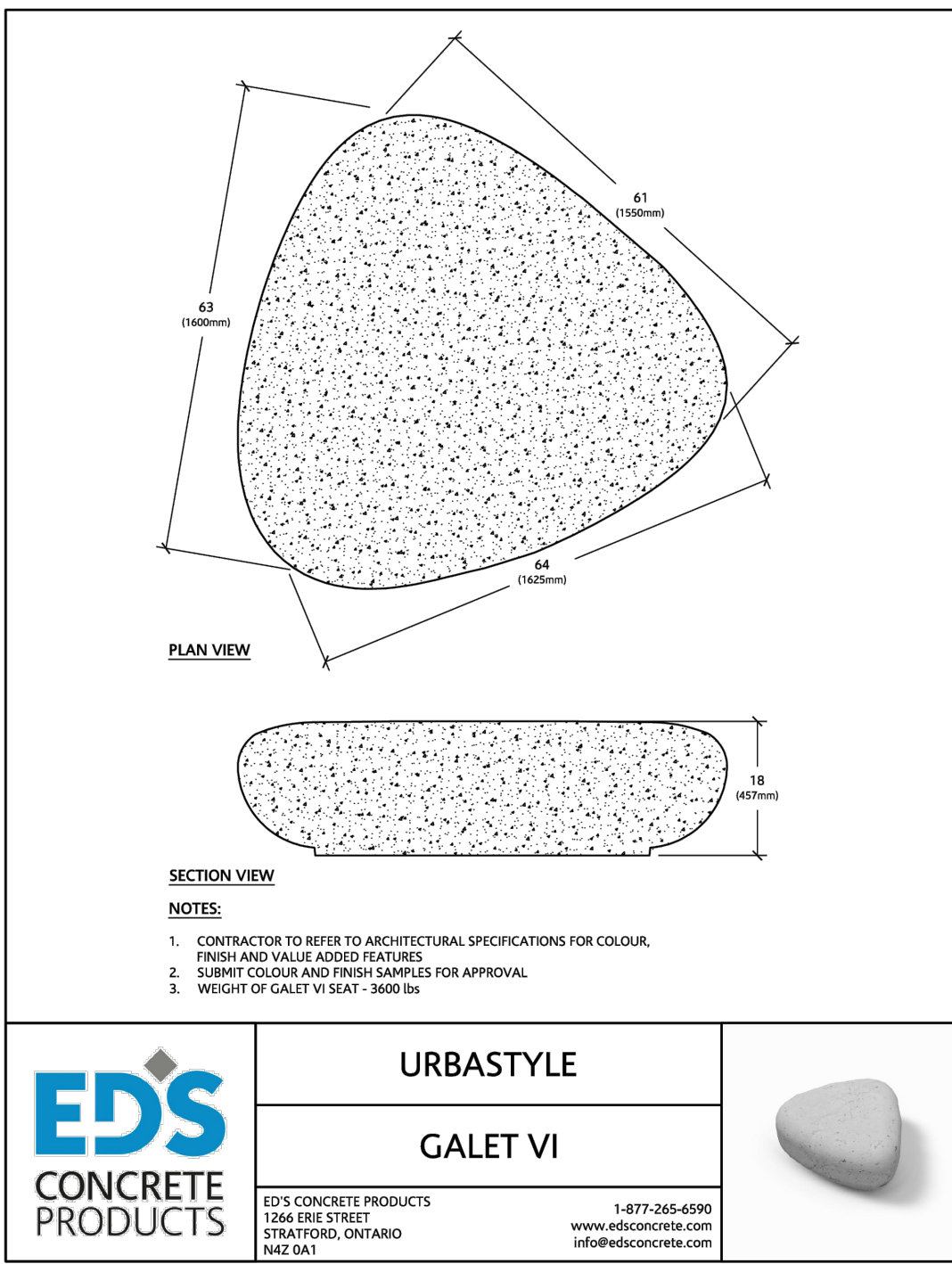


Legend

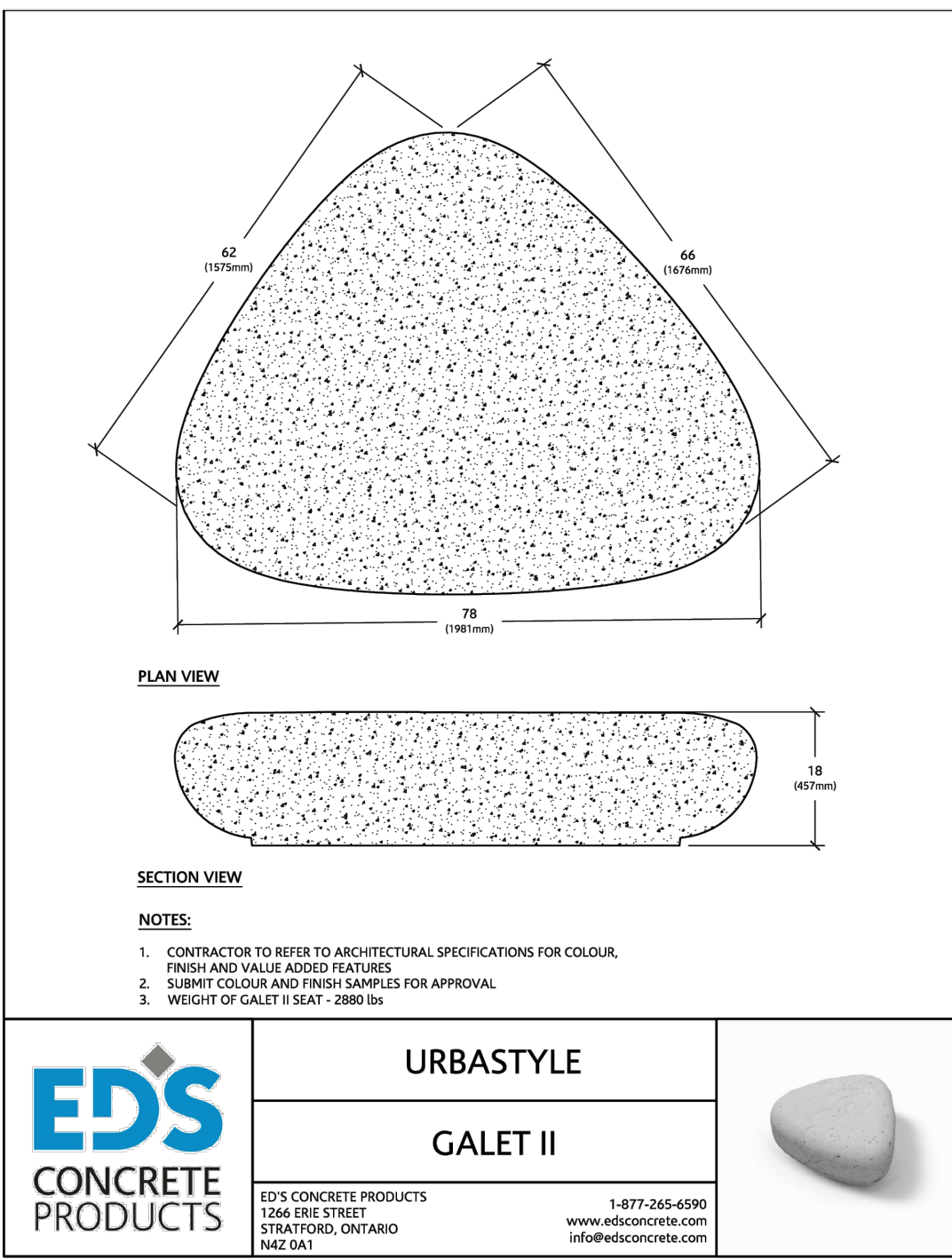
1 BENCH (TYPE 1A AND 1B)



2 BENCH (TYPE 2A, 2B AND 2C)



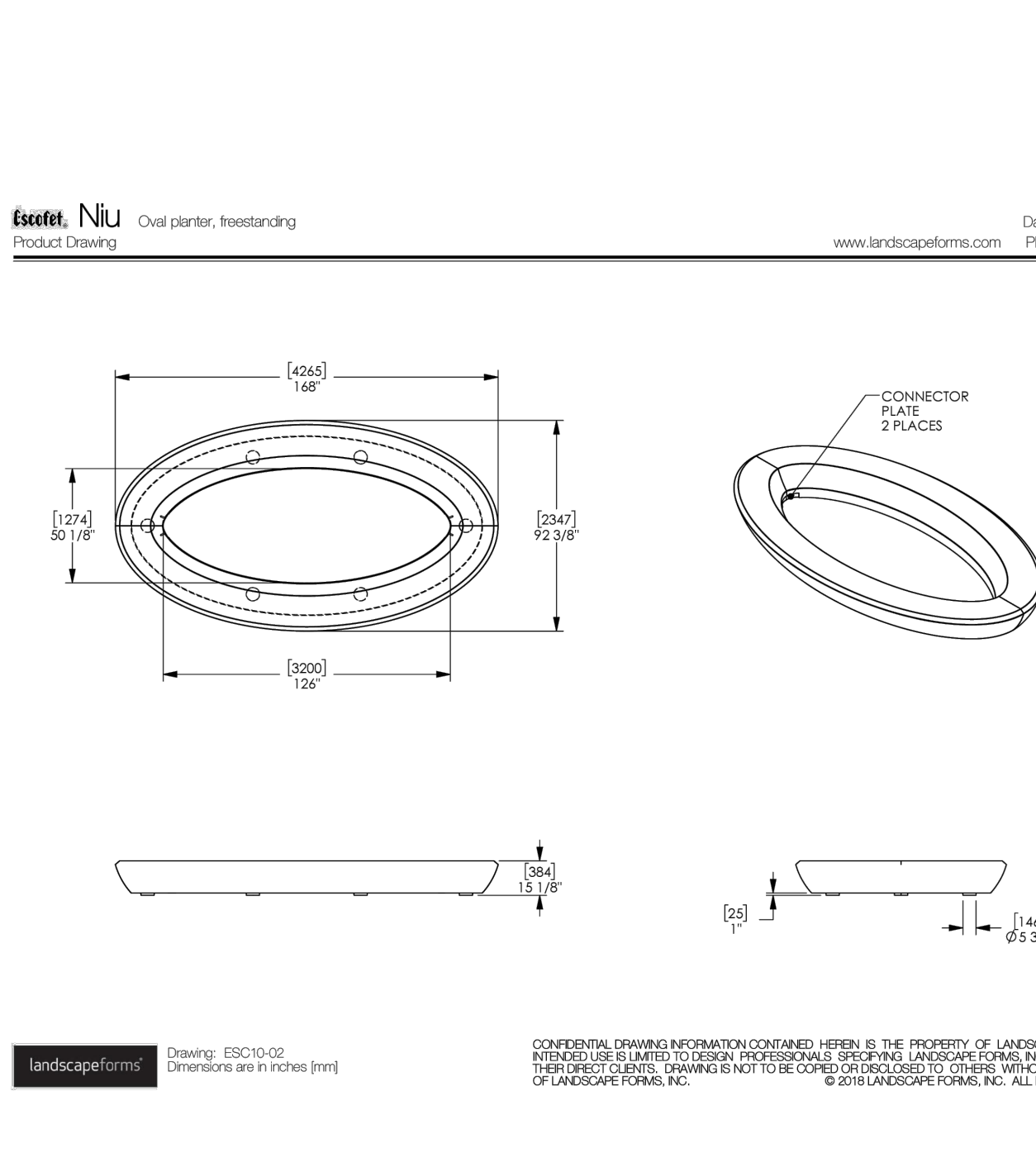
3 WASTE RECEPTACLE



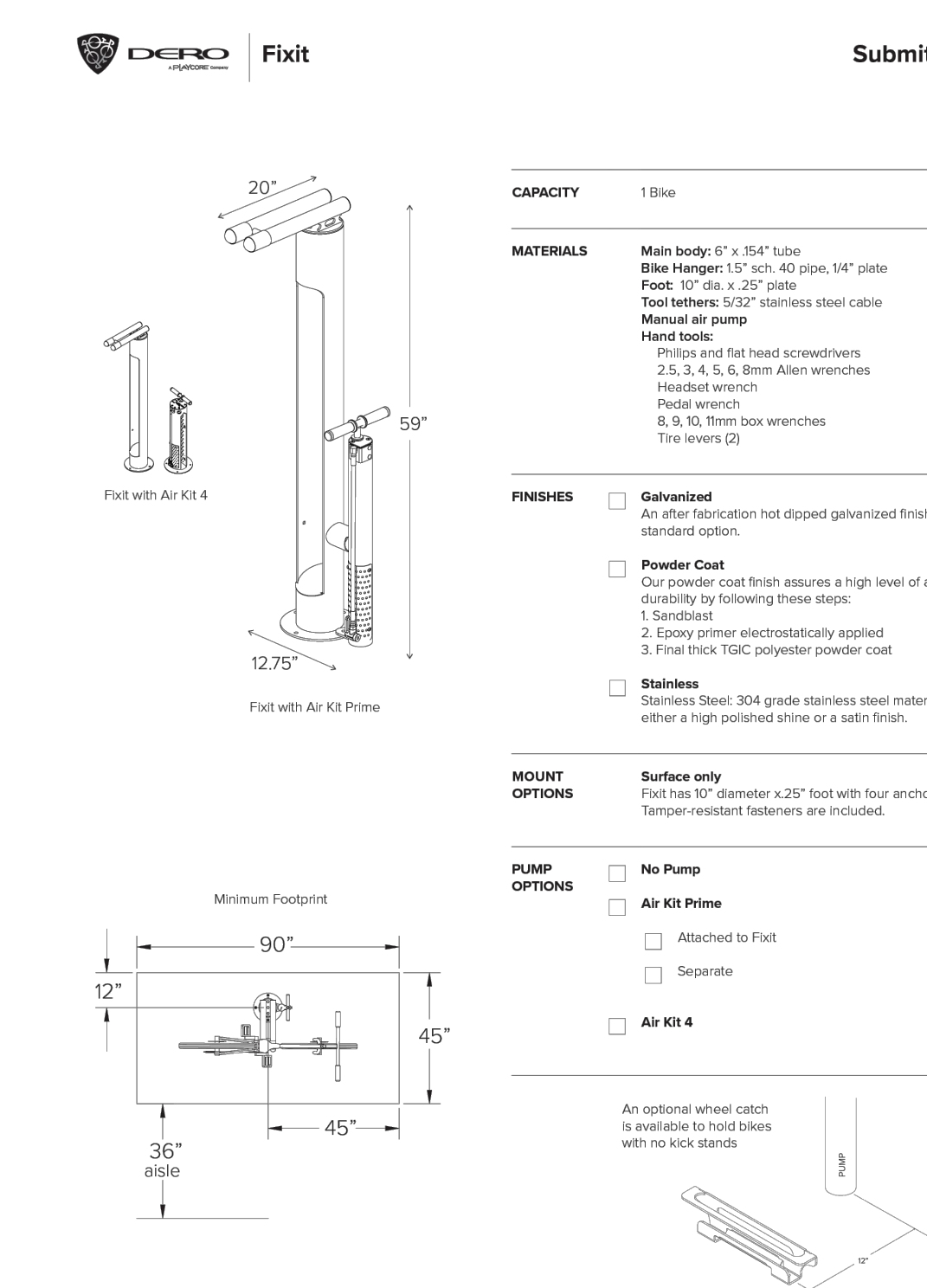
4 BIKE RACK



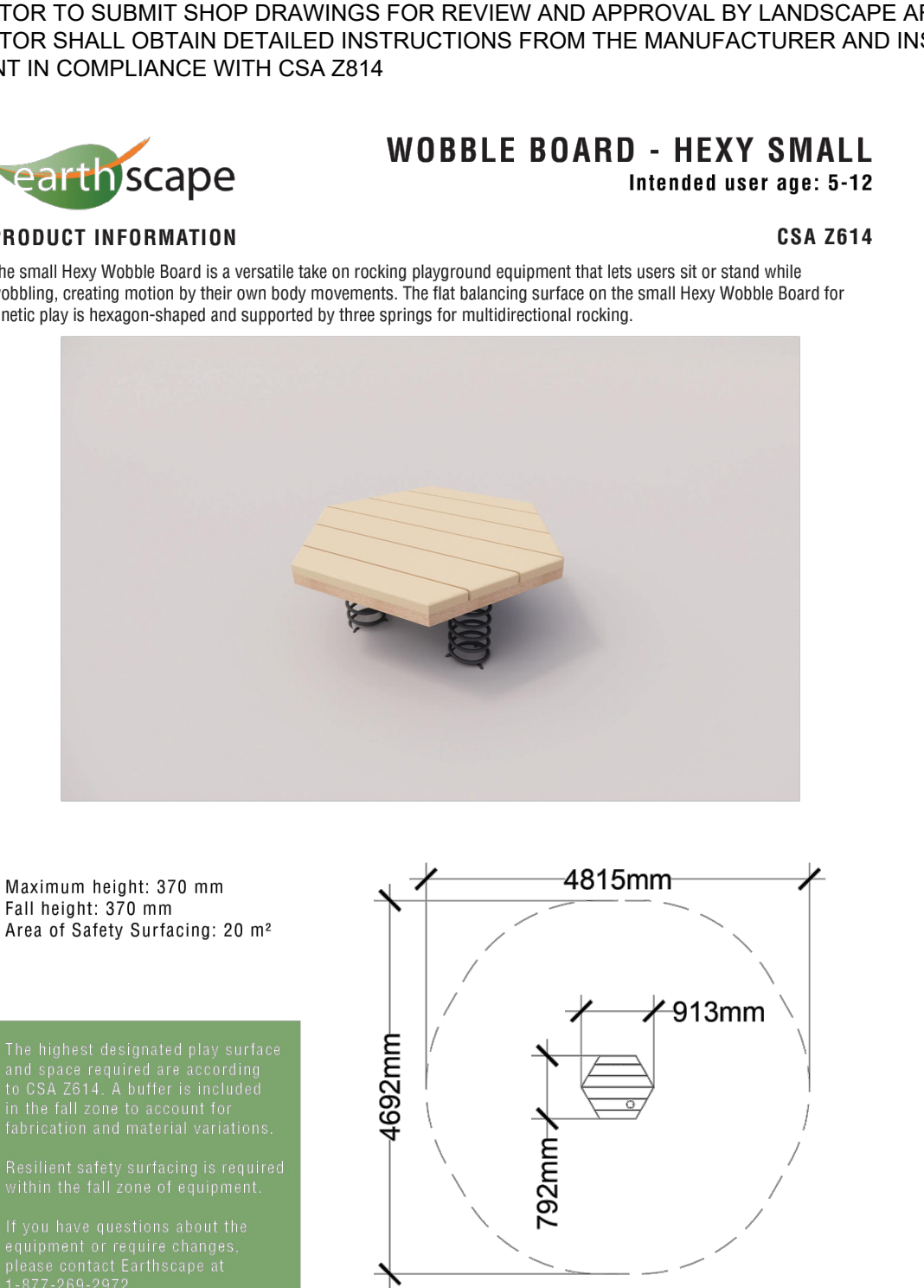
5 TODDLER TABLE



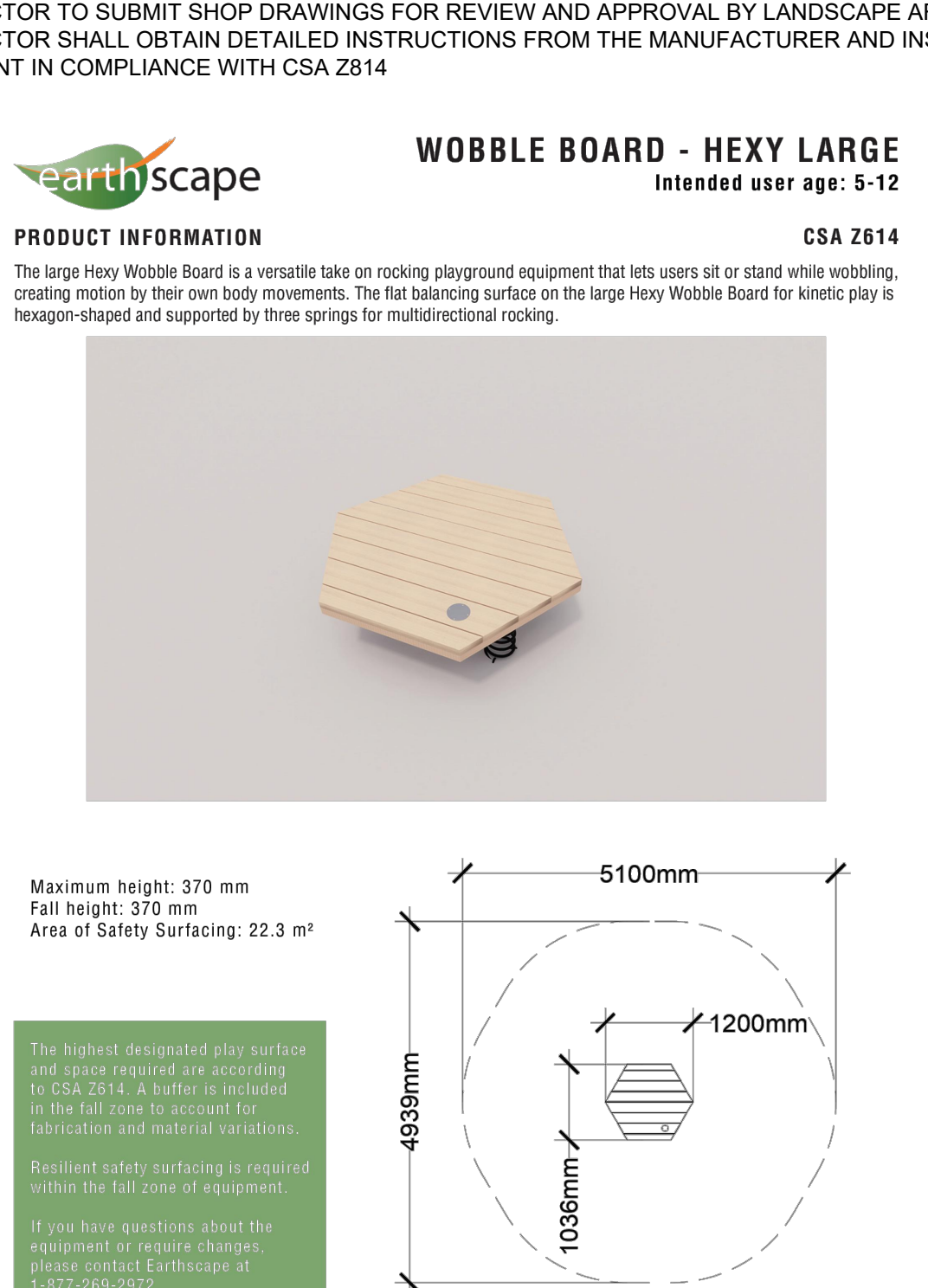
6 BENCH (TYPE 3A)



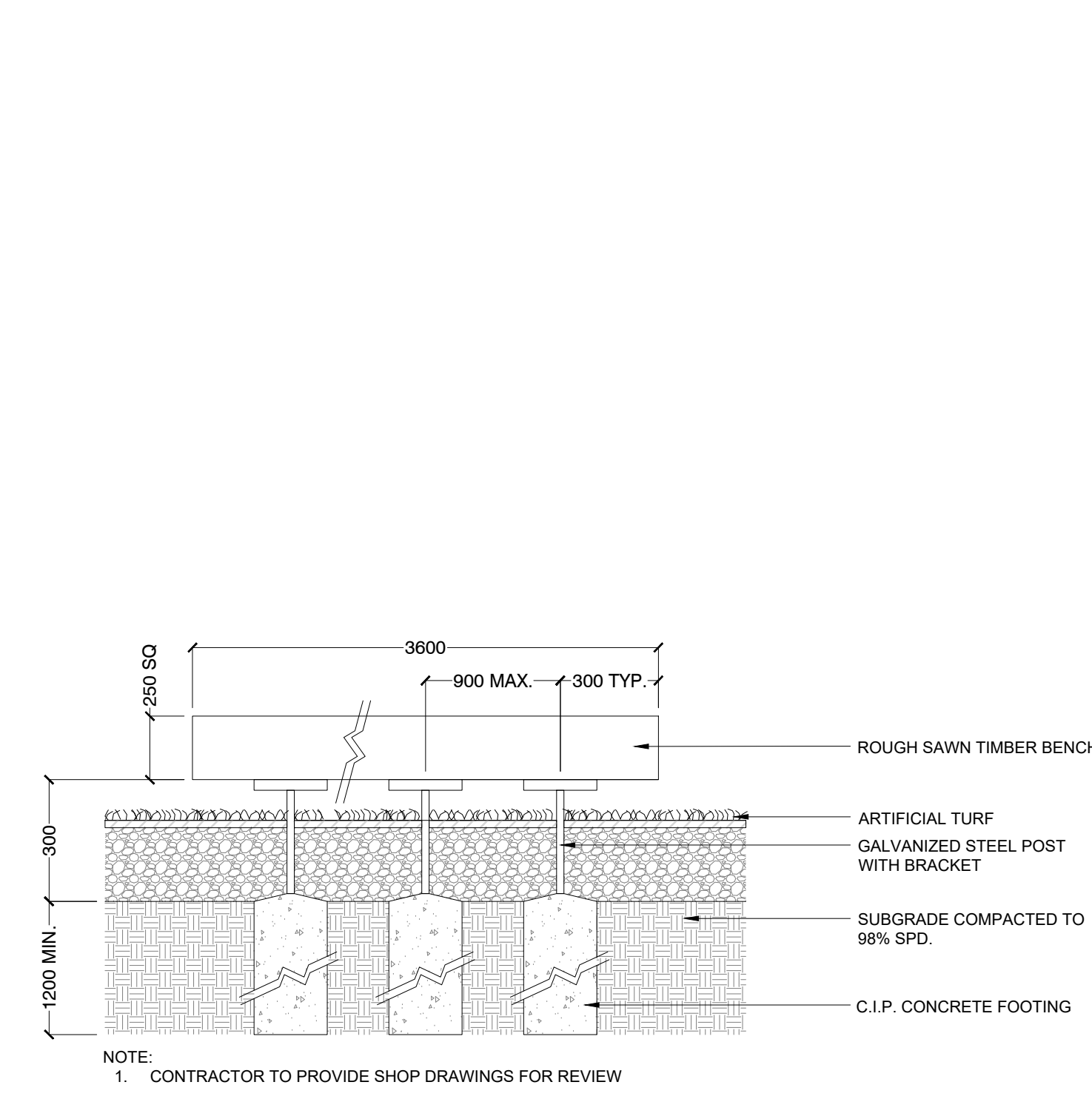
7 BENCH (TYPE 3B)



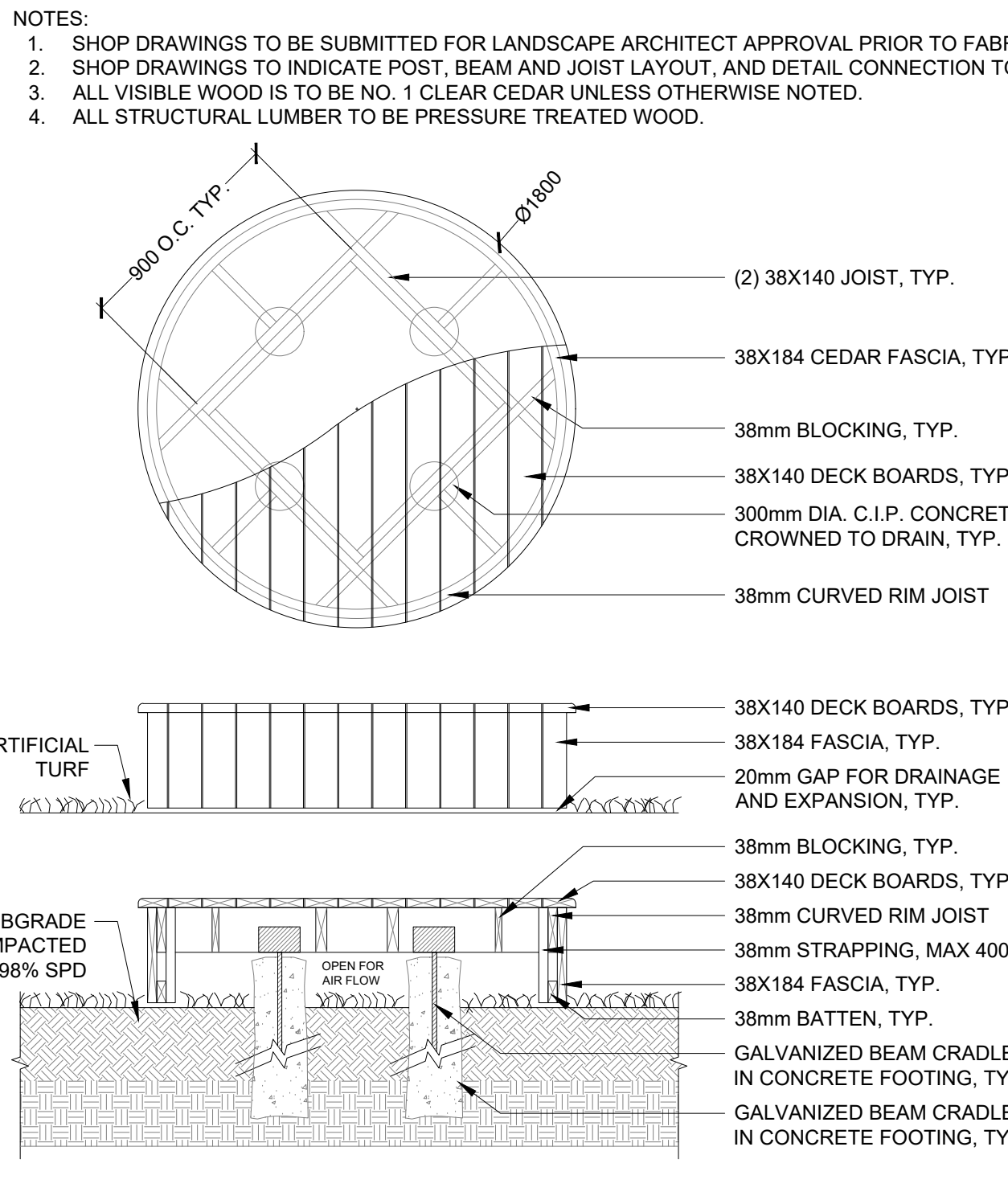
8 BENCH (TYPE 3C)



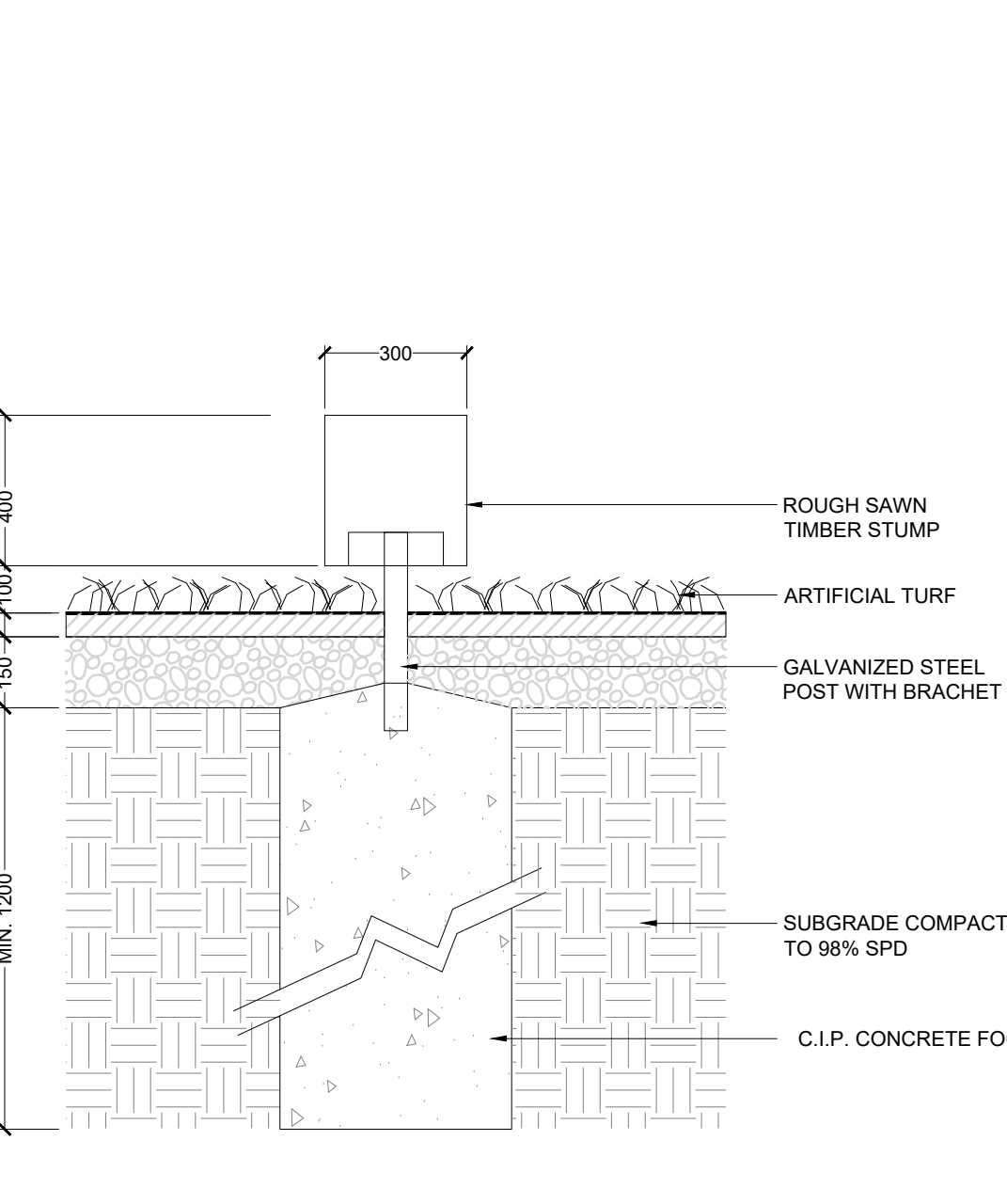
9 BENCH (TYPE 5)



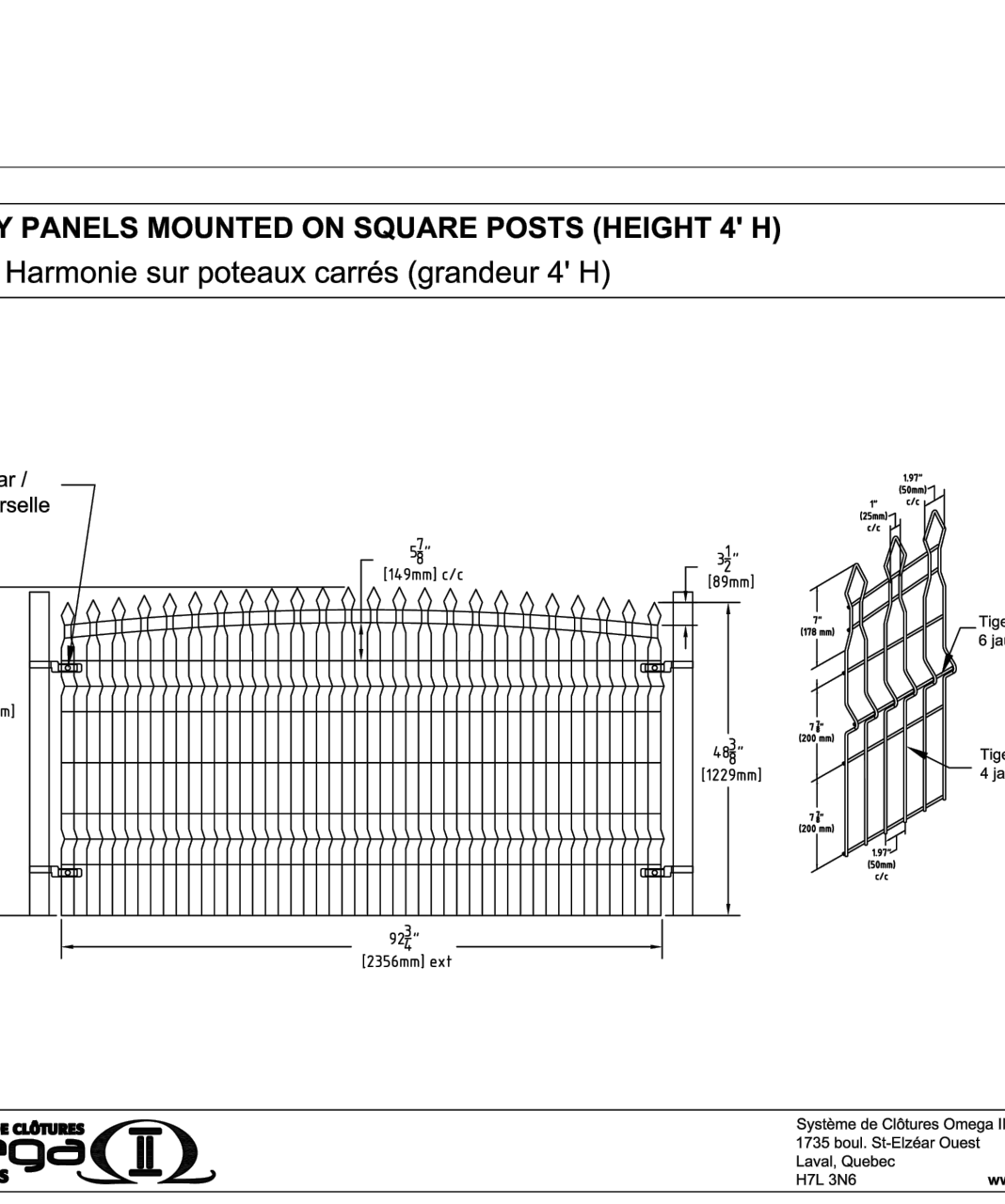
10 OVAL PLANTER / BENCH



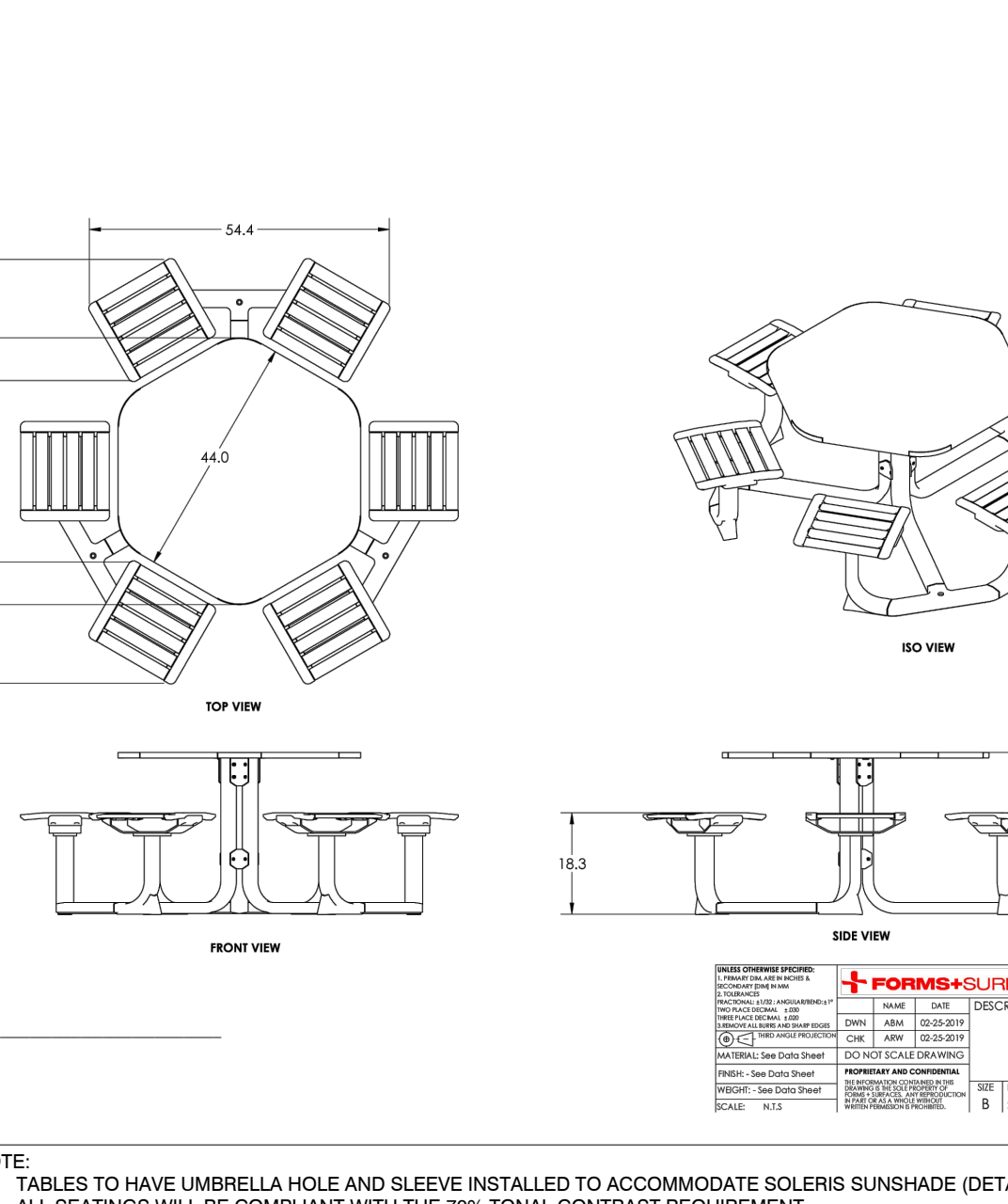
11 BIKE REPAIR STATION



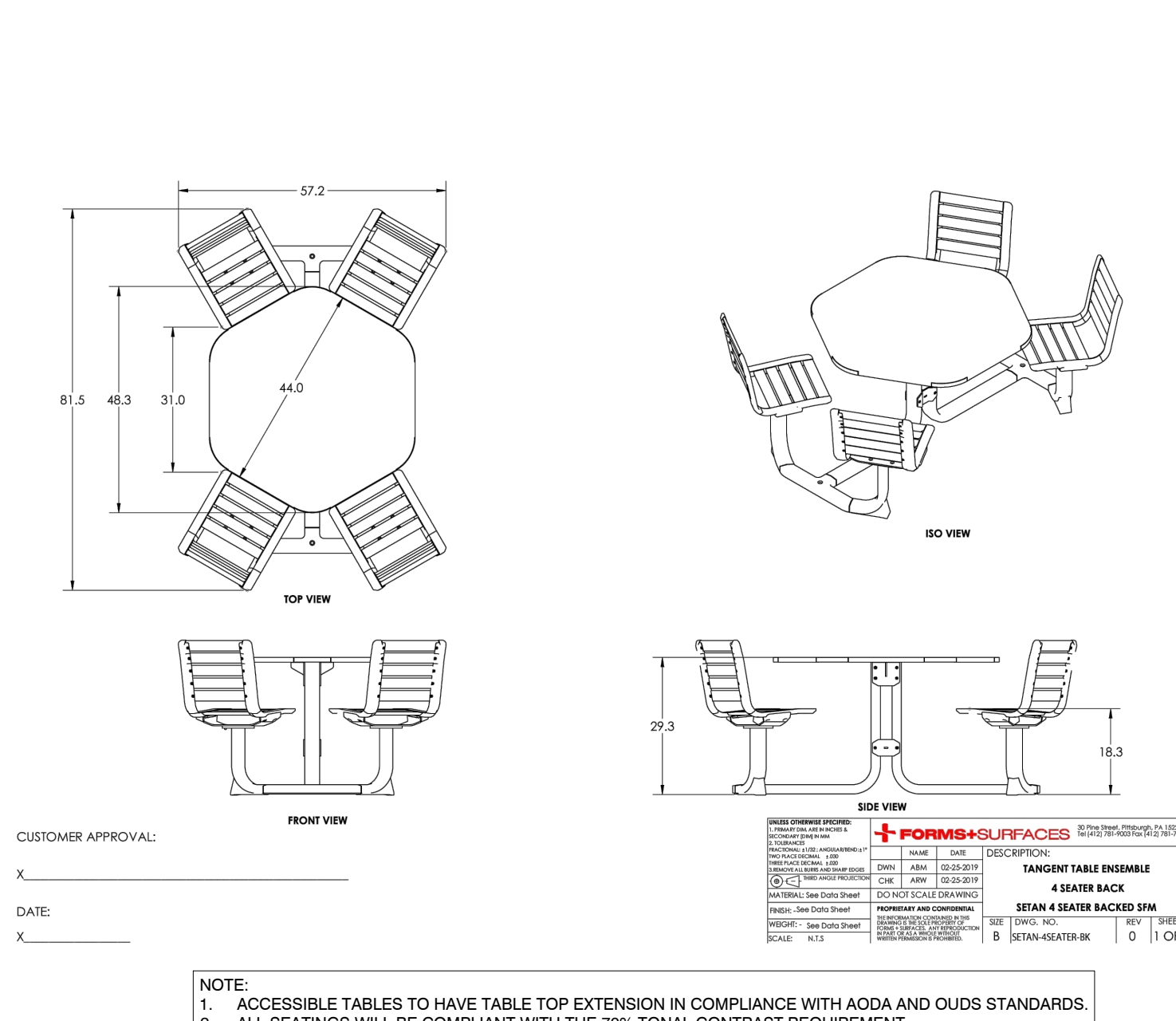
12 SMALL WOBBLE BOARD



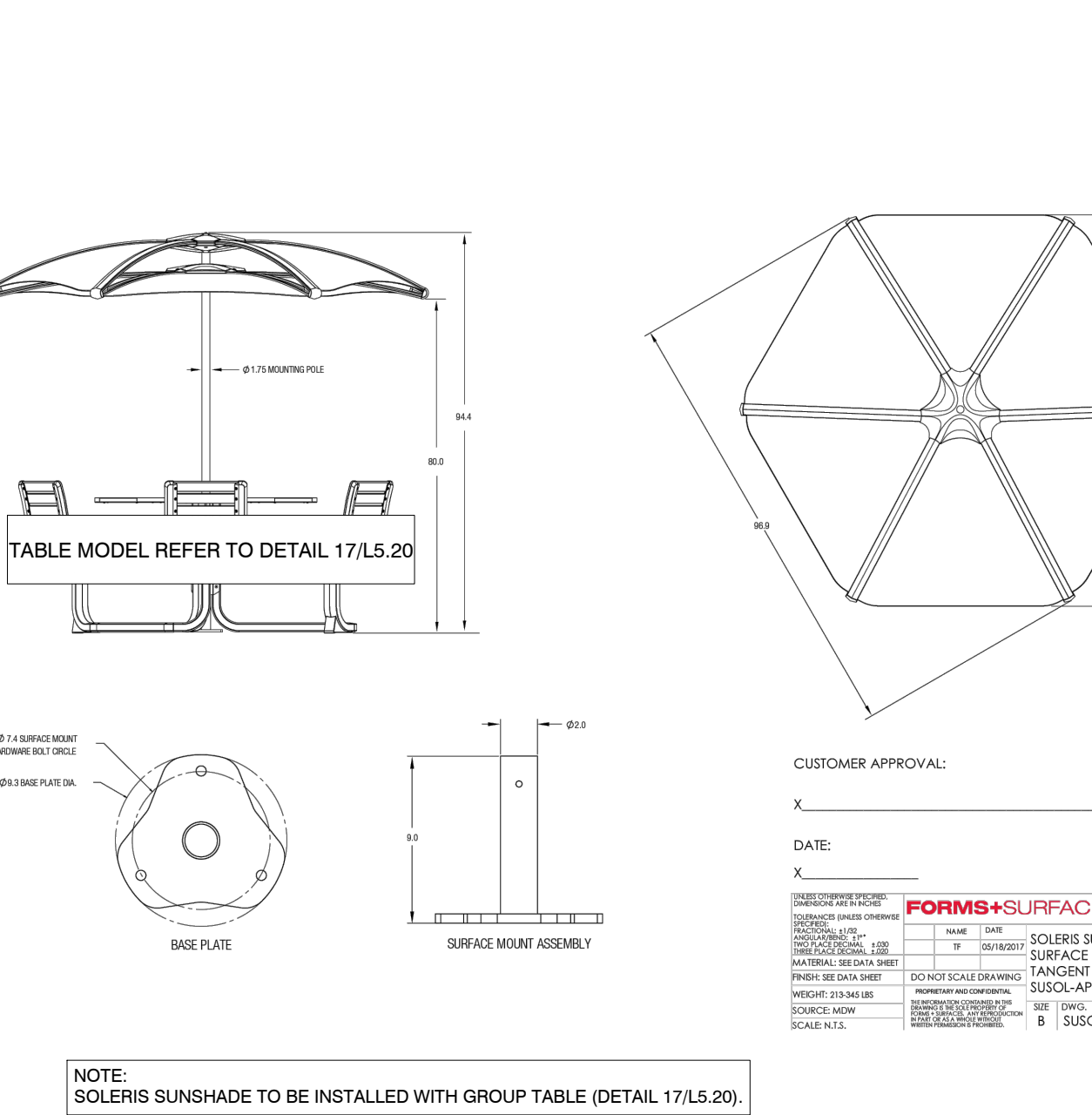
13 LARGE WOBBLE BOARD



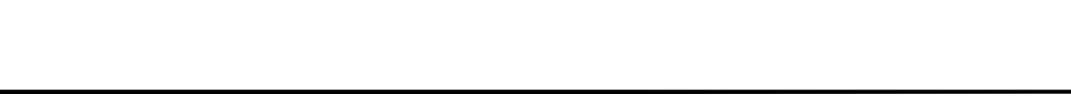
14 CHILDREN'S LOG BENCH



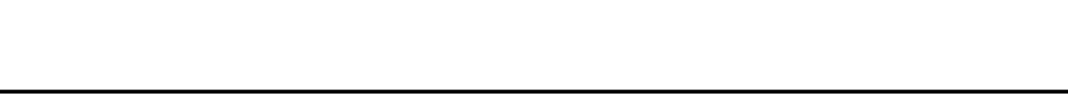
15 CHILDREN'S STUMP TABLE



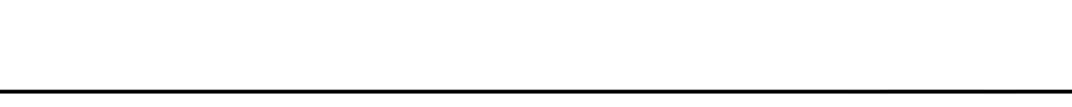
16 CHILDREN'S STUMP CHAIR



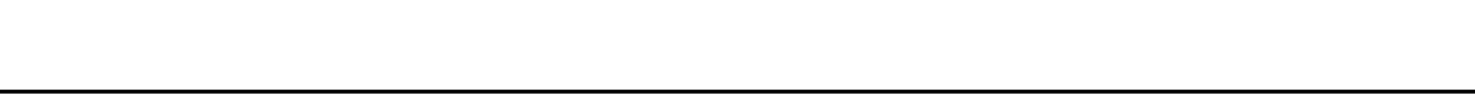
17 OMEGAFENCE - HARMONY



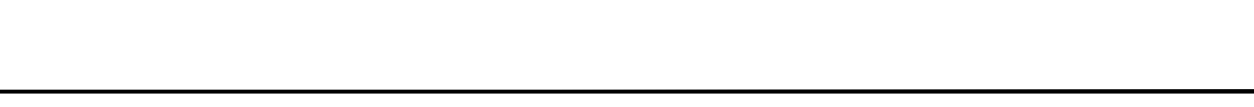
18 GROUP TABLE WITH SOLERIS SHUNSHADE



19 ACCESSIBLE GROUP TABLE

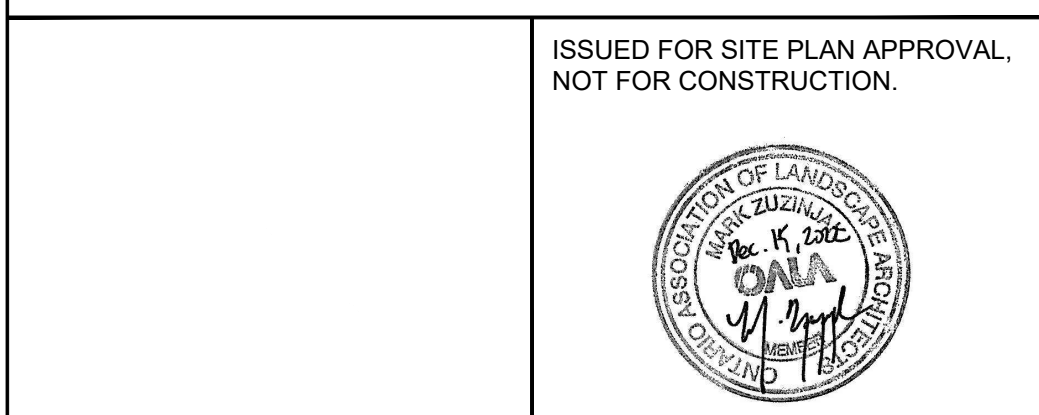


20 SOLERIS SHUNSHADE



FURNISHING DETAILS

North Park Development: Community Centre, Library and Sports Park, Oakville, ON



| DATE | ISSUE | BY |
|--------------|-------------------------------------|----|
| Feb 4 2022 | Issued for Site Plan Application 1 | BR |
| June 10 2022 | Issued for Site Plan Application 2 | BR |
| July 11 2022 | Issued for 30% CD | BR |
| Sept 12 2022 | Issued for Committee of Adjustments | MZ |
| Sept 27 2022 | Issued for 60% CD | MZ |
| Nov 14 2022 | Issued for Tender | MZ |
| Dec 15 2022 | Issued for Site Plan Application 3 | MZ |

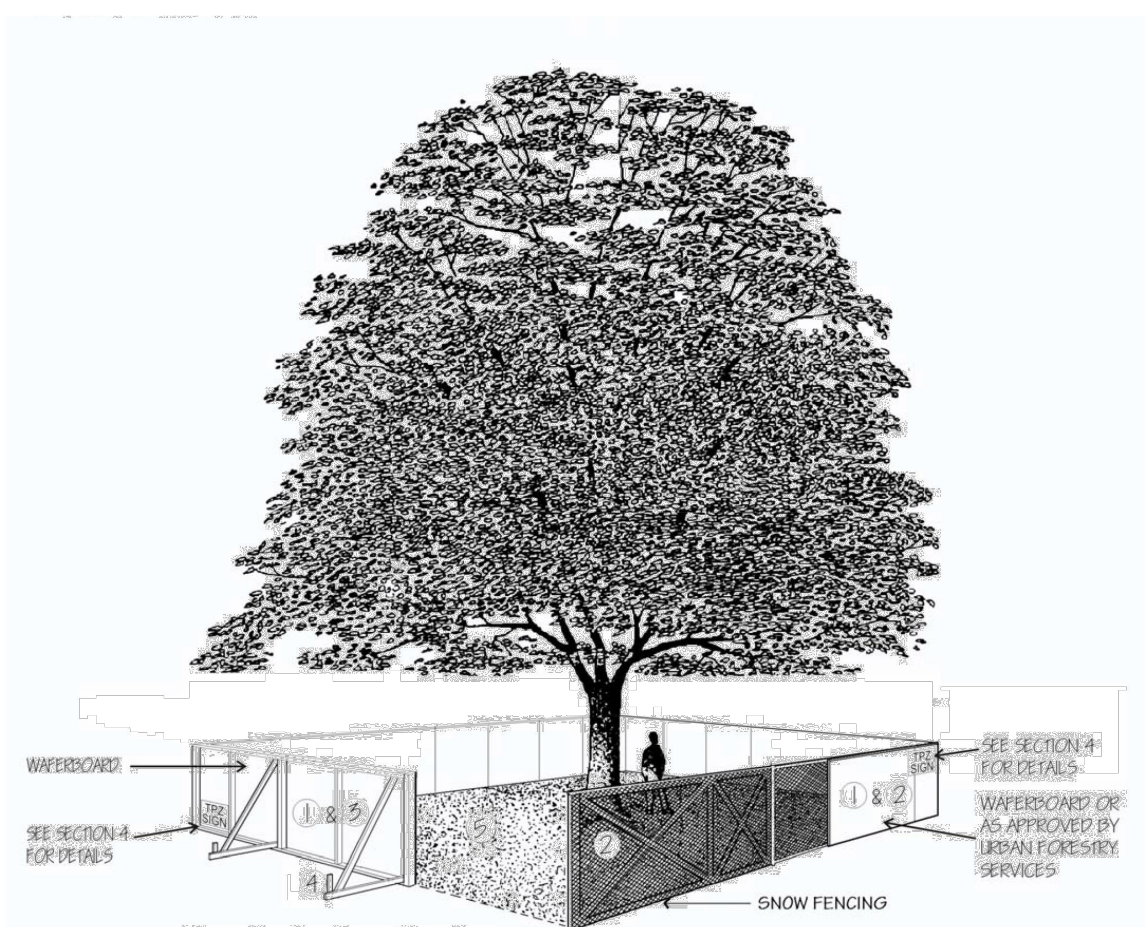
GSP group

1500 Steeles East, Suite 201
Markham, Ontario L3R 9V7
Tel: 905-947-8888
www.gspgroup.ca

1520 Steeles East, Suite 201
Markham, Ontario L3R 9V7
Tel: 905-947-8888
www.gspgroup.ca

DATE: June 2022
Scale: AS SHOWN
Drawn By: MZ, BR
Project No.: 21537

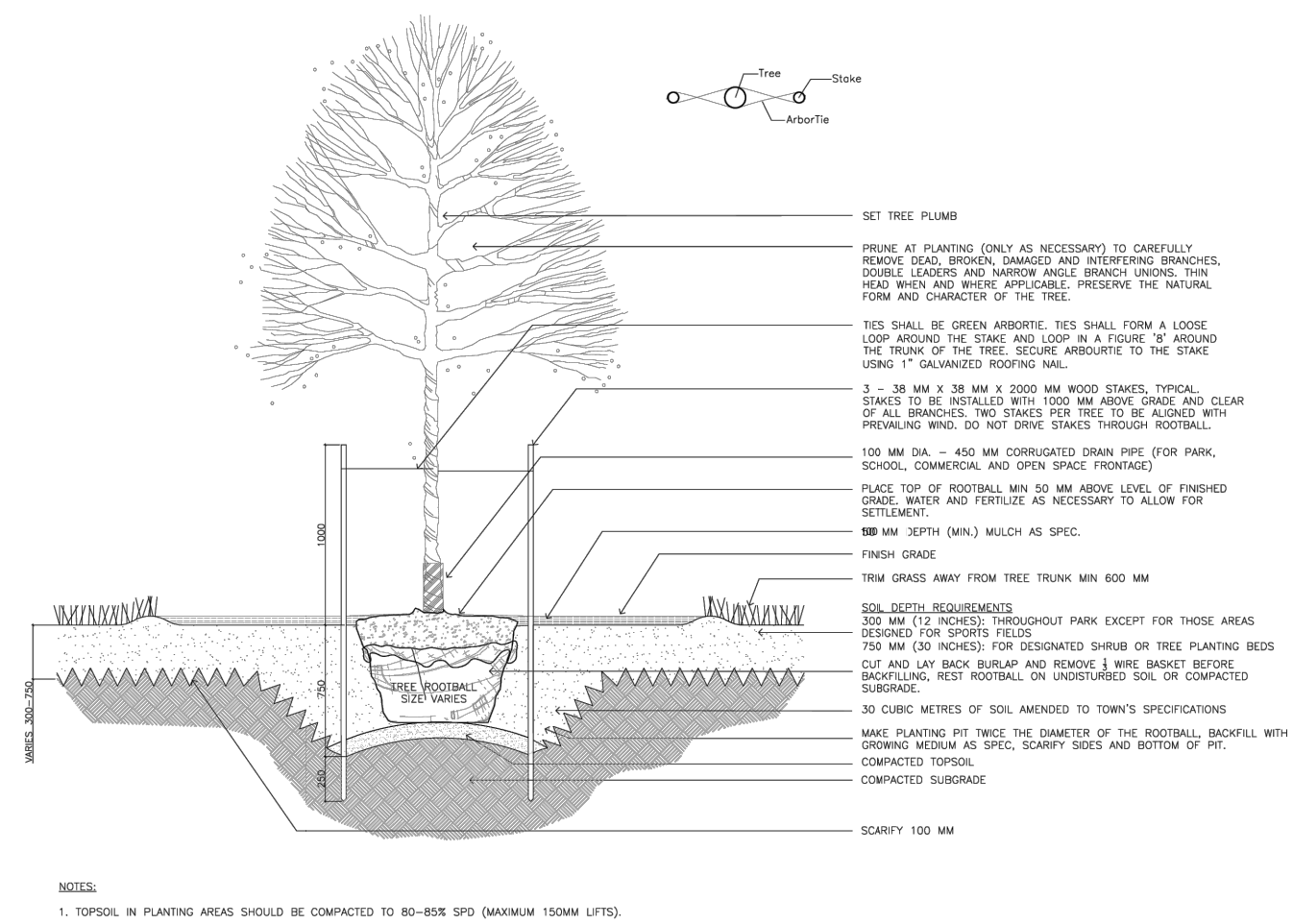
L5.20



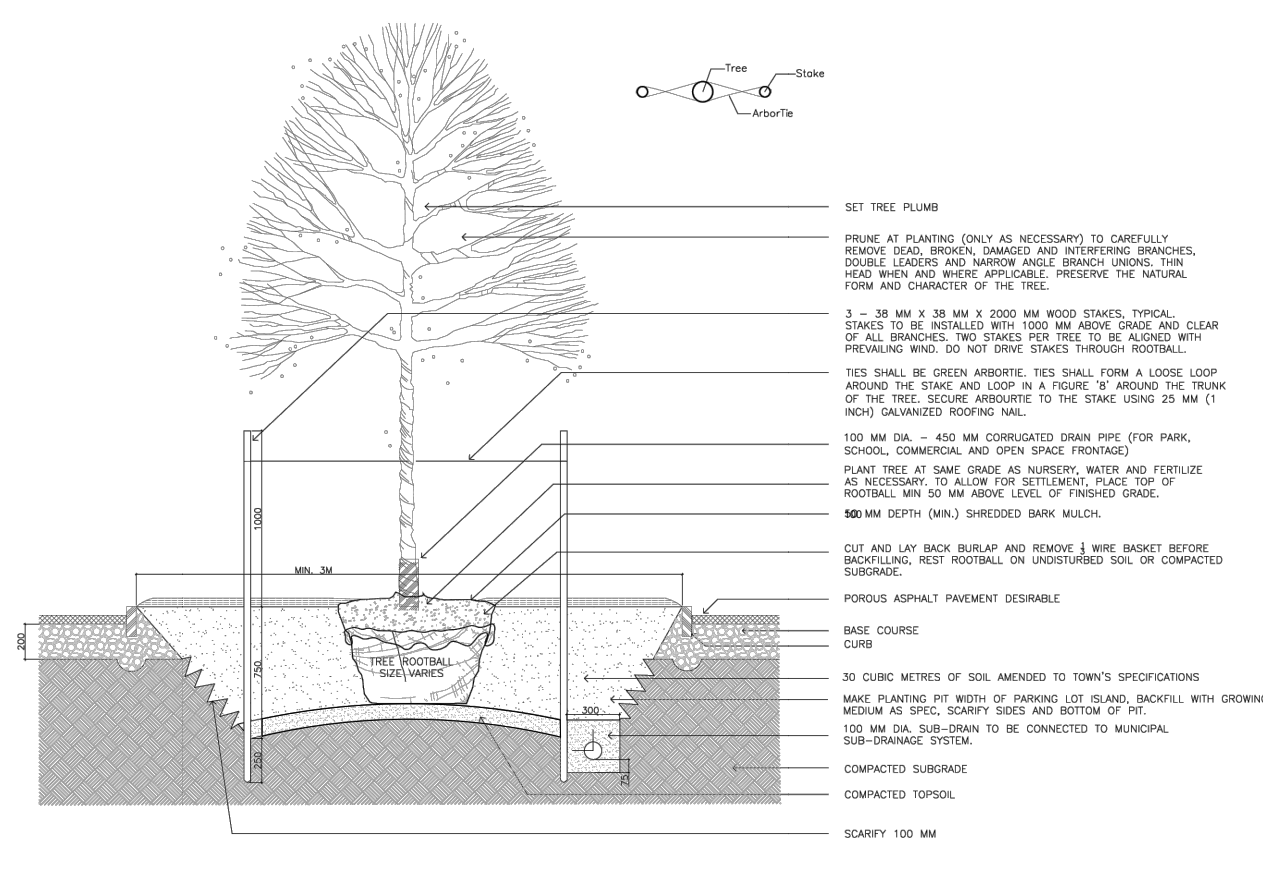
Tree Protection Barriers

1. Tree protection barriers must be 1.2m (4ft) high, w/ a board or an equivalent approved by Urban Forestry Services.
2. Tree protection barriers for trees situated on the Town road alignment where visibility must be maintained shall be 1.2m (4ft) high and consist of plastic web snow fencing on a wood frame made of 2" x 4"s.
3. Where some excavation or fill has to be temporarily isolated over a tree protection barrier, approval must be used to ensure no material enters the Tree Protection Zone.
4. All supports and bracing should be outside the Tree Protection Zone. All such supports should minimize damaging roots outside the Tree Protection Barrier.
5. No construction activity, grade change, surface treatment or excavations of any kind is permitted within the Tree Protection Zone.

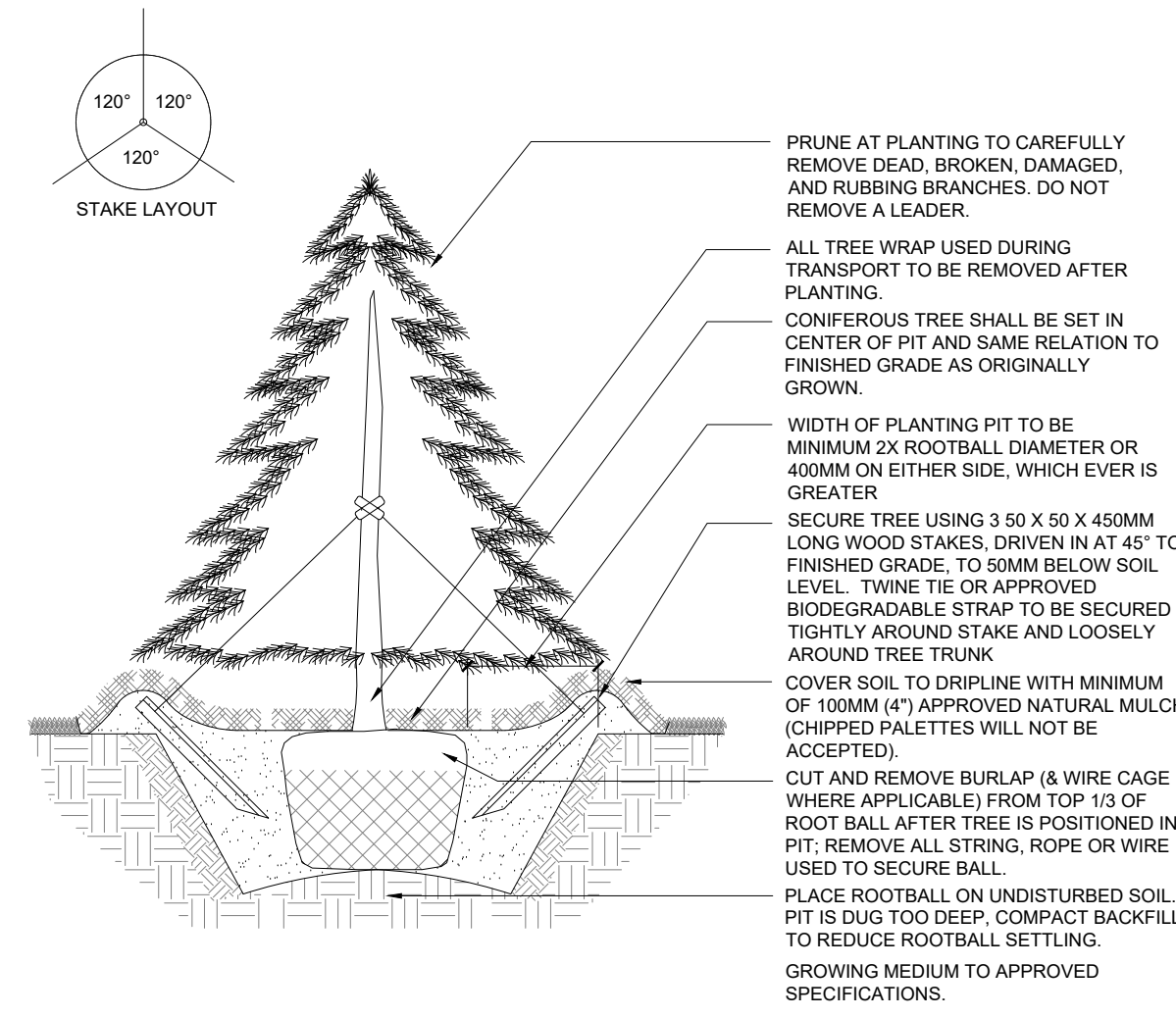
1 TOWN OF OAKVILLE TREE PROTECTION BARRIER DETAIL



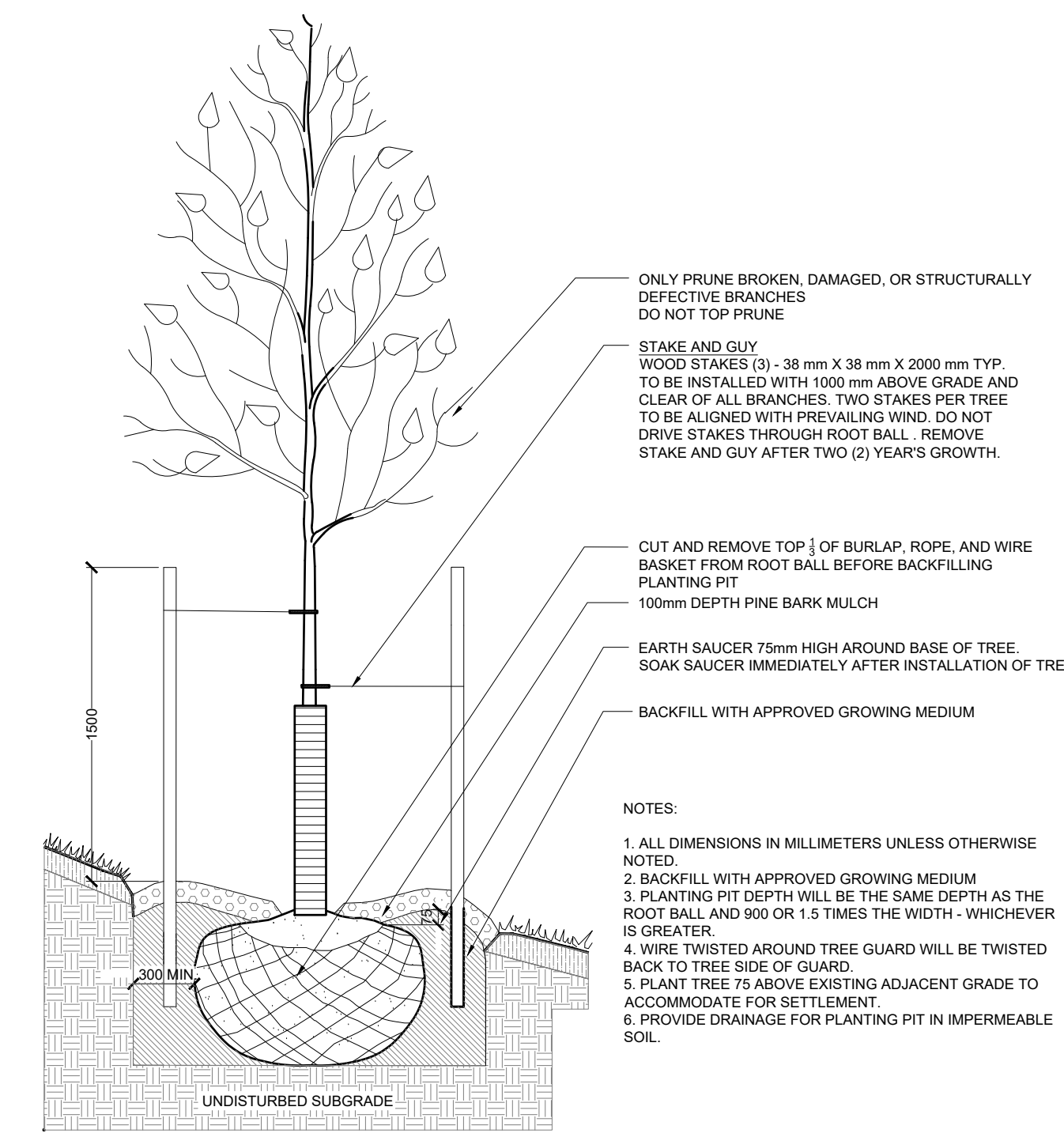
2 TOWN OF OAKVILLE TREE PLANTING DETAIL



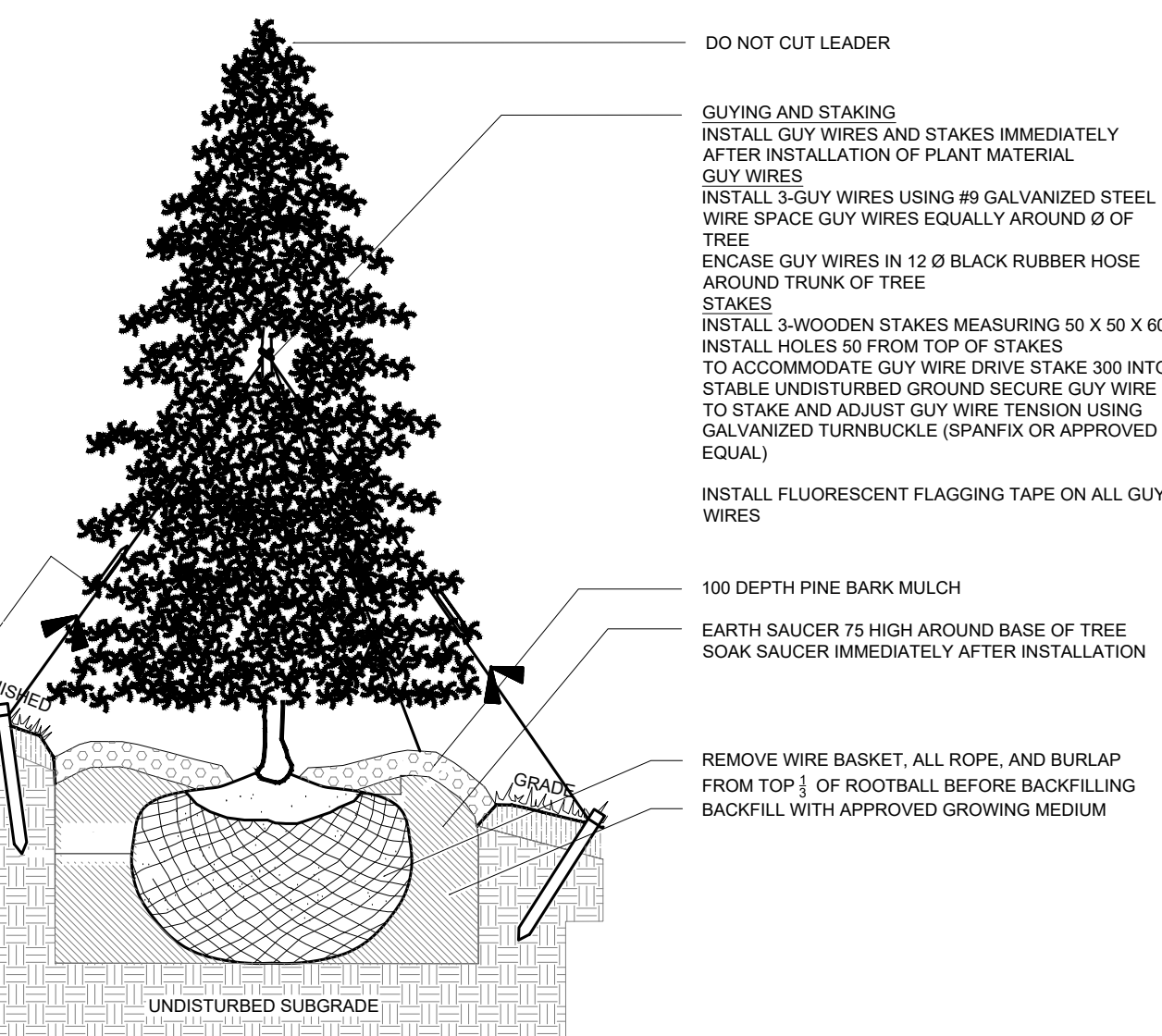
3 TOWN OF OAKVILLE TREE PLANTING IN PARKING LOT DETAIL



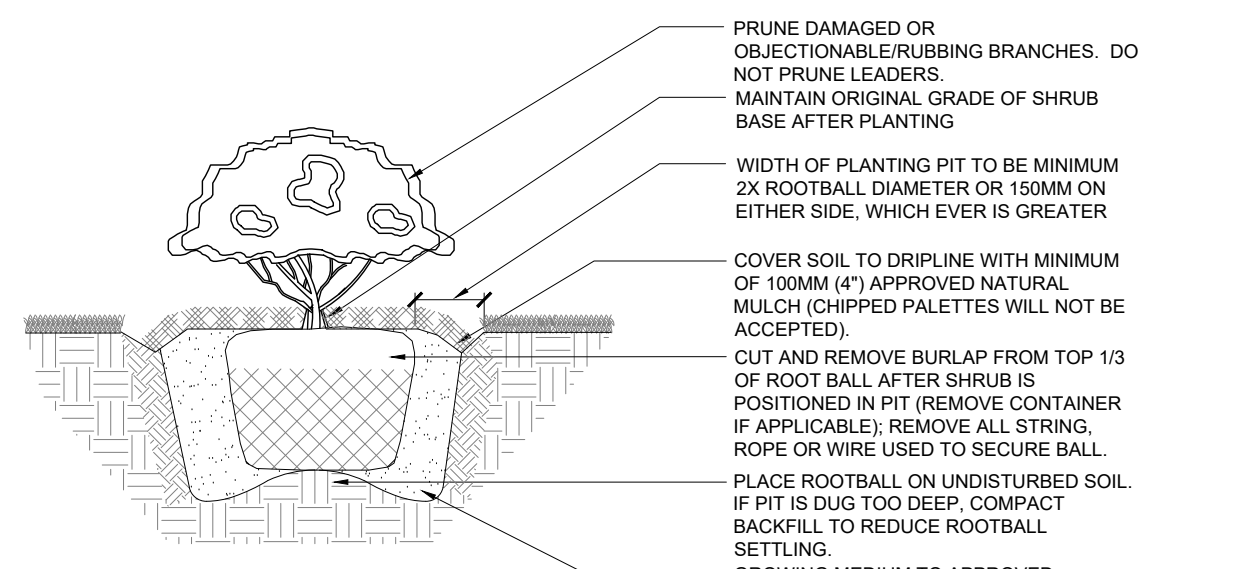
4 CONIFEROUS TREE PLANTING - UP TO 2.5M HEIGHT (B.W/B) N.T.S.



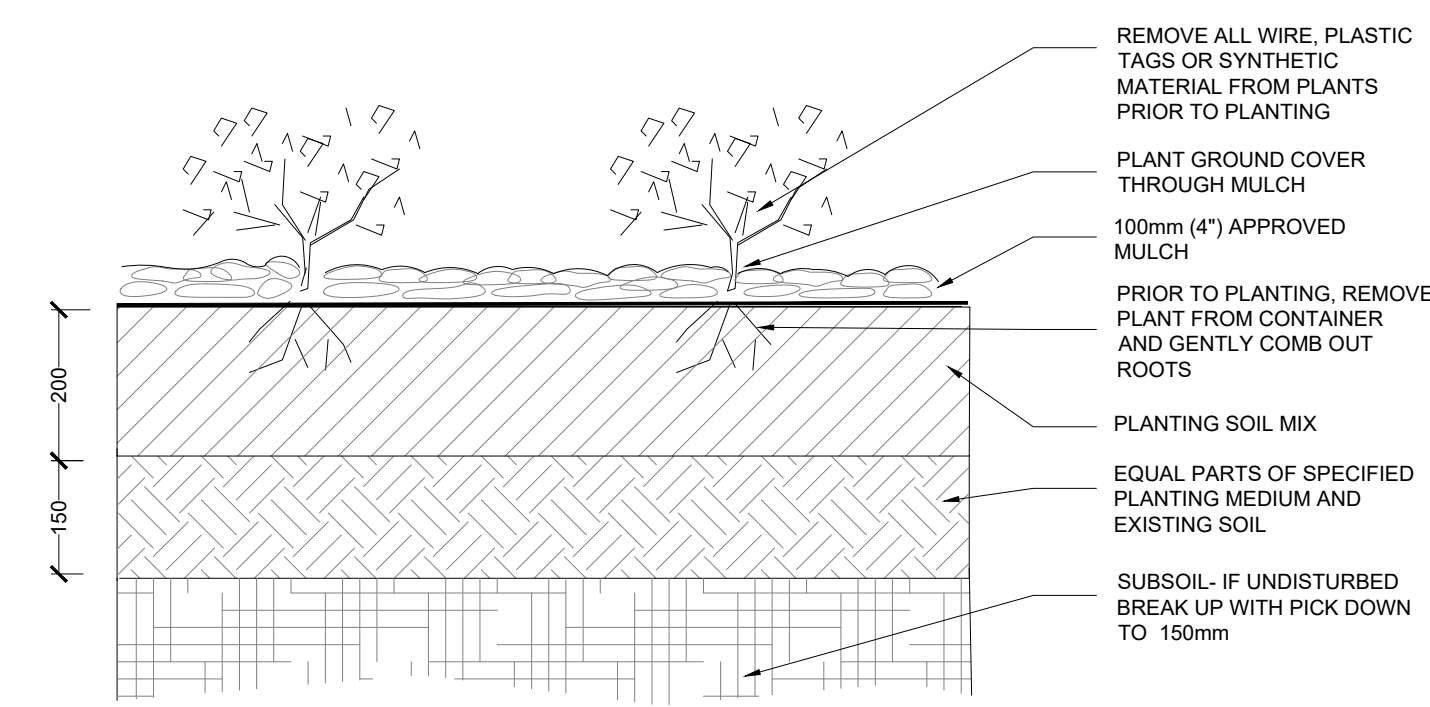
5 Deciduous Tree Planting On A Slope N.T.S.



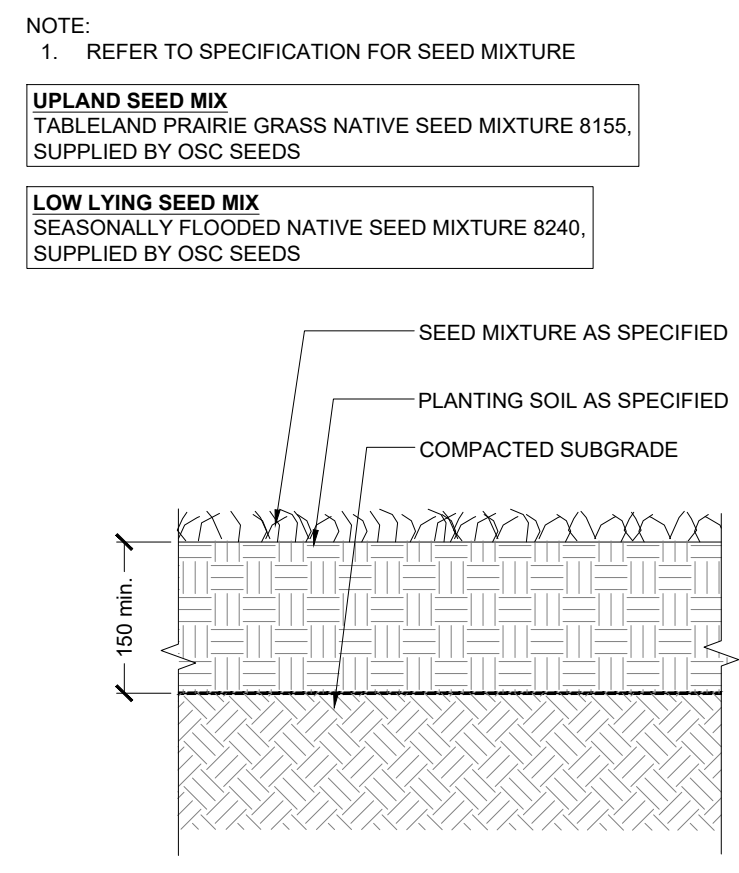
6 Coniferous Tree Planting On A Slope N.T.S.



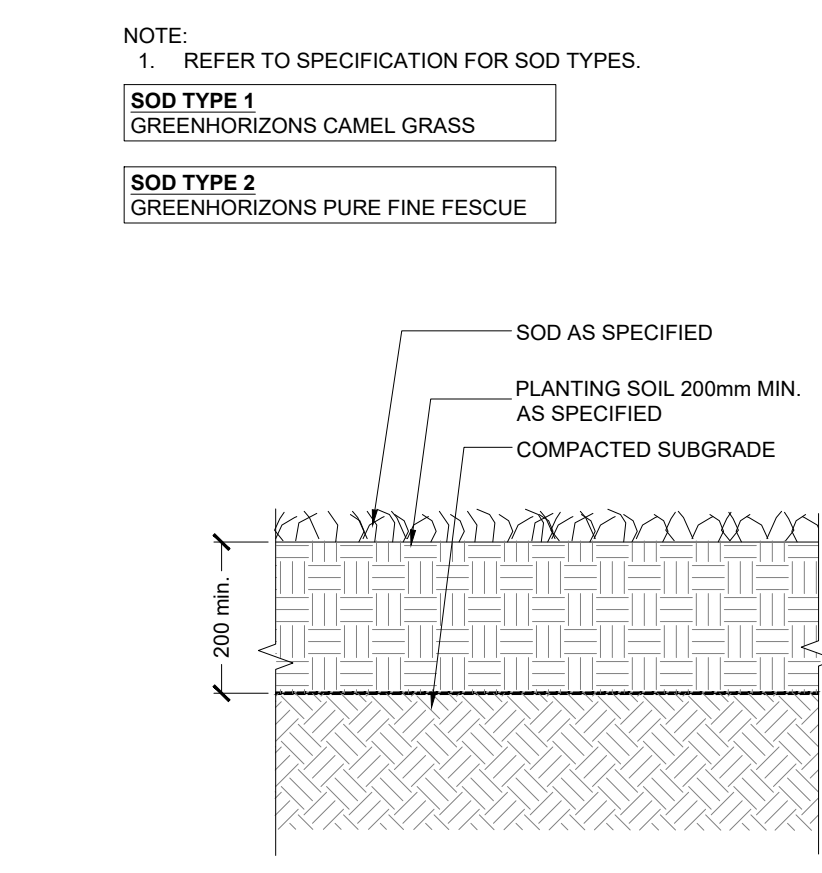
7 B&B/CONTAINER STOCK SHRUB PLANTING N.T.S.



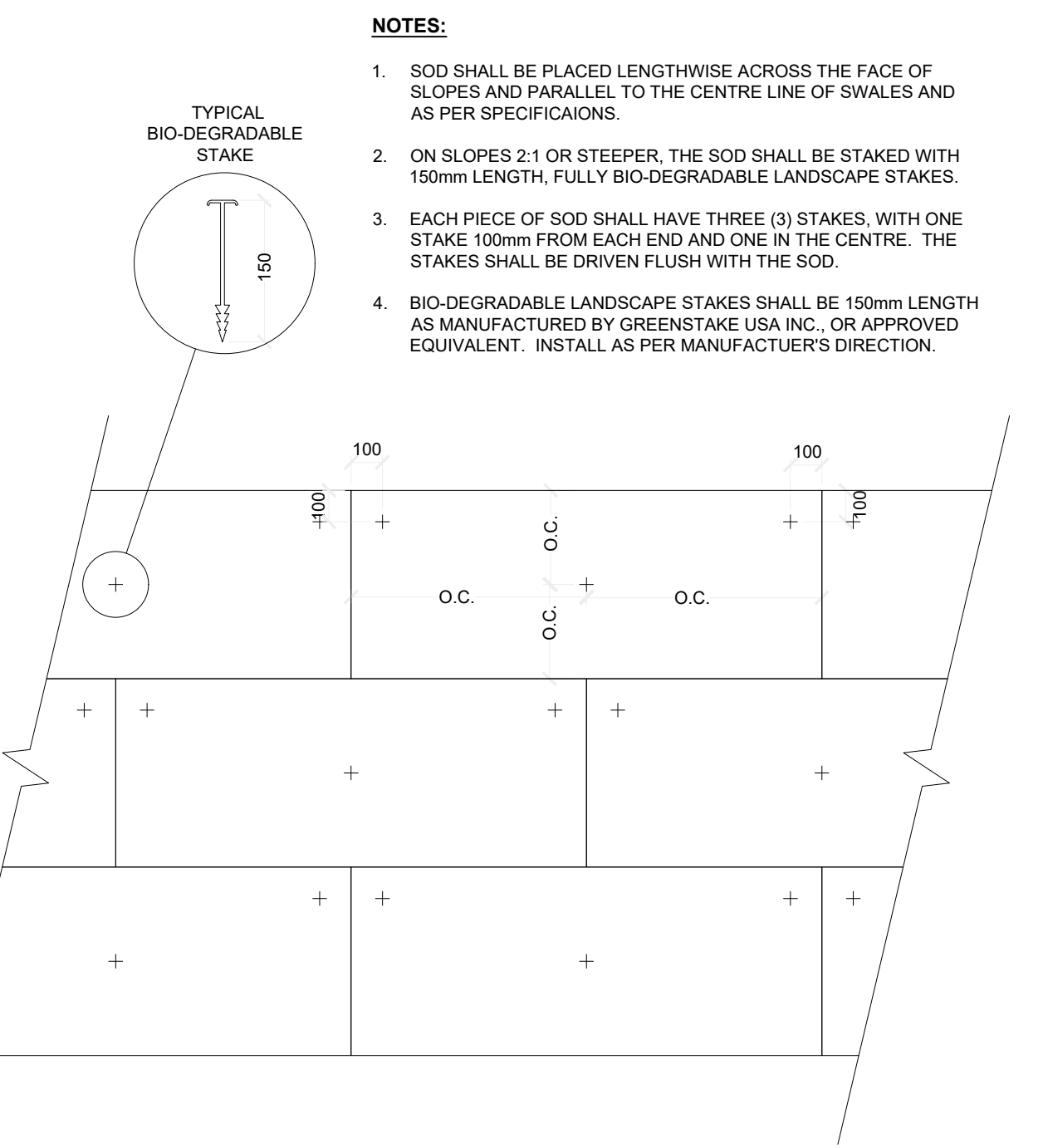
8 PERENNIAL & ORNAMENTAL GRASS PLANTING N.T.S.



9 SEEDING Scale 1:15



10 SOD Scale 1:15



11 SOD ON SLOPE INSTALLATION N.T.S.

Legend

- GENERAL NOTES:**
1. Drawings not to be used for construction unless authorized by the Landscape Architect.
 2. Contractor shall report any discrepancies between the drawings and site conditions prior to commencement of the work.
 3. All utility locates are the responsibility of the Contractor. Hand dig within the limits recommended by the service utility. Utility conflicts with proposed tree locations must be reported immediately to the Landscape Architect.
 4. Sixteen Mile Community Centre & Library base drawing provided by Diamond Schmidt Architects.
 5. For Sixteen Mile Community Centre grading information refer to drawing by MTE Consultants.
 6. North Park Sports Park base drawings provided by The MBTW Group.
 7. Landscape drawings show engineering information for design purposes only. Do not construct engineering works from these drawings.

PLANTING DETAILS

North Park Development: Community Centre, Library and Sports Park, Oakville, ON

ISSUED FOR SITE PLAN APPROVAL, NOT FOR CONSTRUCTION.



| DATE | ISSUE | BY |
|--------------|-------------------------------------|----|
| Feb 4 2022 | Issued for Site Plan Application 1 | BR |
| June 10 2022 | Issued for Site Plan Application 2 | BR |
| July 11 2022 | Issued for 30% CD | BR |
| Sept 12 2022 | Issued for Committee of Adjustments | MZ |
| Sept 27 2022 | Issued for 60% CD | MZ |
| Nov 14 2022 | Issued for Tender | MZ |
| Dec 15 2022 | Issued for Site Plan Application 3 | MZ |

| DATE | REVISIONS | BY |
|-------------|-------------------------|----|
| Jan 27 2022 | Issued for Coordination | BR |
| May 2 2022 | Issued for Coordination | MZ |

