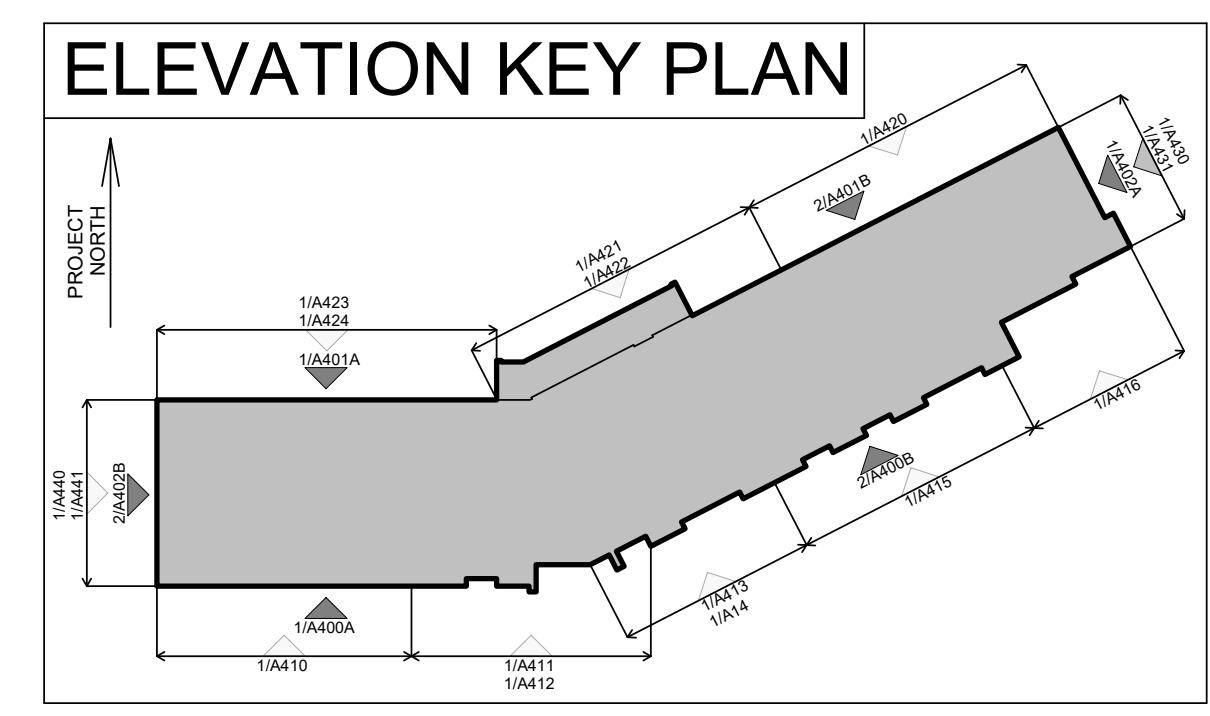


**1 EAST ELEVATION**  
A402 1:125

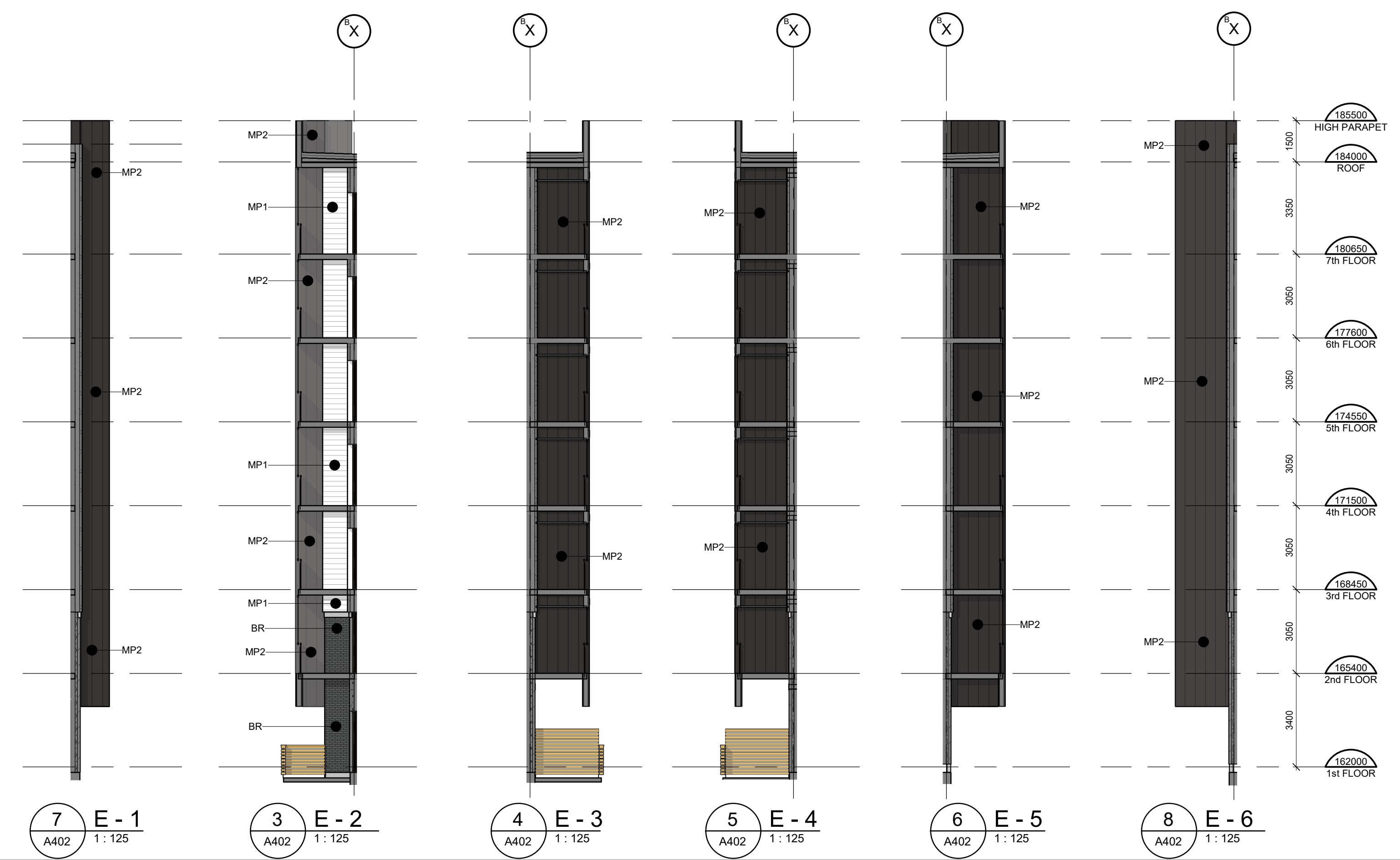


**2 WEST ELEVATION**  
A402 1:125



### LEGEND

GL	GLAZING PANEL Vitro Solarban 60 (2) Acuity + Acuity
G.GL	GUARD GLAZING PANEL Vitro Solarban 60 (2) Acuity
SP1	SPANDREL PANEL 1 I.C.D. OpacCoat 300 Colour: Basalt Grey #RAL 7012
SP2	SPANDREL PANEL 2 I.C.D. OpacCoat 300 Colour: Harmony Gray #3-820
	MULLIONS PPG Duranar - Metal Coatings Colour: Black Metallic UC99630XL
MP1	PREFIN METAL PANEL 1 MAC Metal Architectural Colour: Titanium White
MP2	PREFIN METAL PANEL 2 MAC Metal Architectural (VERSA) Colour: Titanium Black
MP3	PREFIN METAL PANEL 3 MAC Metal Architectural Colour: Cork
MP4	PREFIN METAL PANEL 4 MAC Metal Architectural (MS1) Colour: Titanium Black
MF1	PREFIN METAL FLASHING 1 Metalworks - #701 Colour: Polar White
MF2	PREFIN METAL FLASHING 2 Metalworks - #30 Colour: Black
LU	LUMON METAL PANEL Metal - Clear LUMON SYSTEM PANEL Metal Components - Jet Black 9005
AR	ALUMINUM RAILING W/ GLAZING Seguro Aluminum Railings Glass - Clear
BR	MASONRY Brampton Brick; Contempo PRP Onyx MORTAR: Maximix; Colour: #94C3



**7 E-1** A402 1:125  
**3 E-2** A402 1:125  
**4 E-3** A402 1:125  
**5 E-4** A402 1:125  
**6 E-5** A402 1:125  
**8 E-6** A402 1:125

**NOTES:**

**MANDATORY WINDOW WALL REQUIREMENTS**

1. THE WINDOW WALL SYSTEM MUST INCLUDE PRIMARY AND SECONDARY PLANES OF PROTECTION (WATER BARRIERS) AND VENTILATE AIR SPACES WITH PROVISION FOR POSITIVE DRAINAGE TO THE EXTERIOR IN A RAINSCREEN DESIGN.
2. THE DESIGN, TESTING AND INSTALLATION OF THE WINDOW WALL SYSTEM INCLUDING FRAMING MEMBERS, GLAZING UNITS, ANCHORAGE, SLAB EDGE COVERS, OPENING UNITS, DOORS AND THE TRANSITIONS TO THE ADJOINING ASSEMBLIES AND MATERIALS
  1. INCORPORATE THE RECOMMENDATIONS OF AN INDEPENDENT CONSULTANT (ARCHITECT OR PROFESSIONAL ENGINEER), HAVING EXPERTISE WITH THE DESIGN AND INSTALLATION OF WINDOW WALL SYSTEMS WHO HAS SPECIFICALLY ENGAGED FOR THIS PURPOSE.
  2. THE INDEPENDENT CONSULTANT HAS APPROVED THE CONSULTANT'S BUILDING DESIGN FOR THE WINDOW WALL SYSTEM FOR THE SPECIFIC PROJECT.
  3. THE WINDOW WALL SYSTEM AS INSTALLED ON THE PROJECT IS IN COMPLIANCE WITH THE ARCHITECT'S BUILDING DESIGN.
3. THE MANUFACTURER OF THE WINDOW WALL SYSTEM PROVIDES SHOP DRAWINGS AND CALCULATIONS FOR THE WINDOW WALL SYSTEM TO BE USED ON THE SPECIFIC PROJECT FOR REVIEW BY THE CONSULTANT AND THE INDEPENDENT CONSULTANT, AND THE SHOP DRAWINGS AND CALCULATIONS HAVE BEEN SEALED BY A PROFESSIONAL ENGINEER RETAINED BY THE MANUFACTURER RESPECTING STRUCTURAL INTEGRITY, AIR BARRIER CONTINUITY AND WATER INGRESS MANAGEMENT.
4. THE MANUFACTURER OF THE WINDOW WALL SYSTEM PROVIDES THE CONSULTANTS AND THE INDEPENDENT CONSULTANT WITH TEST REPORTS FOR AIR LEAKAGE AND WATER PENETRATION IN COMPLIANCE WITH THE REQUIREMENTS OF THE APPLICABLE VERSION OF CSA 4401, OR OTHER STANDARD APPLICABLE AT THE TIME AND PLACE OF CONSTRUCTION, AND THE CONSULTANTS AND THE INDEPENDENT CONSULTANT HAVE EACH REVIEWED AND ACCEPTED THESE REPORTS AS APPROPRIATE FOR THE SPECIFIC PROJECT.
5. A FULL SCALE MOCK-UP OF THE SPECIFIC WINDOW WALL SYSTEM FOR THE PROJECT, INCLUDING FRAMING MEMBERS, GLAZING UNITS, ANCHORAGE, SLAB EDGE COVERS, OPENING UNITS, DOORS AND TRANSITIONS TO ADJOINING ASSEMBLIES AND MATERIALS, HAS BEEN SUCCESSFULLY TESTED RESPECTING AIR AND WATER INFILTRATION AND ENVIRONMENTAL SEPARATION PERFORMANCE IN ACCORDANCE WITH RECOGNIZED INDUSTRY STANDARDS AS DETERMINED, REVIEWED AND APPROVED BY THE INDEPENDENT CONSULTANT.
6. THE COMPLETED WINDOW WALL SYSTEM AS DESIGNED, CONSTRUCTED AND INSTALLED IS WARRANTED RESPECTING AIR AND WATER INFILTRATION TO THE SATISFACTION OF THE INDEPENDENT CONSULTANT.
7. THE ENTIRE WINDOW WALL SYSTEM AS DESIGNED, CONSTRUCTED AND INSTALLED IS WARRANTED RESPECTING AIR LEAKAGE AND WATER INGRESS BY THE WINDOW WALL MANUFACTURER FOR A PERIOD OF NOT LESS THAN 5 YEARS FOLLOWING SUBSTANTIAL PERFORMANCE OF THE PROJECT OR REGISTRATION IN THE CASE OF A CONDOMINIUM, WHICHEVER COMES LATER. THE WARRANTY PROVIDED IS TO COVER ALL OF THE LABOUR AND MATERIALS REQUIRED TO REPAIR OR REPLACE THE WINDOW WALL SYSTEM SHOULD AIR LEAKAGE OR WATER INGRESS OCCUR DURING THE WARRANTY PERIOD.
8. THE INDEPENDENT CONSULTANT SHALL PROVIDE A PROFESSIONAL'S SEALED LETTER CONFIRMING THAT THEY WILL COMPLY WITH THE MANDATORY WINDOW WALL REQUIREMENTS ABOVE. THIS LETTER SHALL BE SUBMITTED AT THE TIME OF SHOP DRAWING SUBMISSION.

**NOTES:**

ALL GUARDS TO MEET REQUIREMENTS OF THE O.B.C. 2012. MANUFACTURER/SUPPLIER TO PROVIDE ENGINEERED, STAMPED SHOP DRAWINGS COMPLETE WITH MOUNTING DETAILS. GUARDS SHALL COMPLY WITH O.B.C. 3.3.1.17, 3.4.6.5 AND 4.1.10. GUARDS SHALL COMPLY WITH O.B.C. 4.3.6. ALL GLASS IN GUARDS TO COMPLY WITH O.B.C. SB-13. GLAZING LOCATED 1070 OR LESS ABOVE FINISHED FLOOR AND MORE THAN 600mm ABOVE GRADE SHALL BE DESIGNED AS A GUARD AND SHALL COMPLY WITH ALL REQUIREMENTS OF THE O.B.C. ALL WINDOWS TO MEET THE REQUIREMENTS OF THE O.B.C. 2012 ARTICLE 3.3.4.8. PROTECTION OF WINDOWS IN APARTMENT BUILDINGS. WINDOW SUPPLIER TO PROVIDE ENGINEERED STAMPED SHOP DRAWINGS FOR REVIEW. ALL DOOR AND WINDOW FRAMES AND SASHES TO MEET THE REQUIREMENTS OF THE O.B.C. 2012 ARTICLE 3.1.5.4. COMBUSTIBLE GLAZING AND SKYLIGHTS. REFER TO NOTICE IMPACT STUDY FOR ADDITIONAL GLAZING REQUIREMENTS. ENSURE CO-ORDINATION WITH MECHANICAL DRAWINGS FOR EXHAUST WALL BOX LOCATIONS WITHIN ALUMINUM SCREENS. ALL SPANDREL GLASS PANELS ARE TO HAVE A MINIMUM R-VALUE OF R-10, C/W METAL BACK PAN. DOOR AND WINDOW LOCATIONS, DIMENSIONS, DETAILS AND BUILDING MATERIALS MAY VARY DEPENDING ON FINAL BUILDING LAYOUT, AND SHOWN FOR INFORMATION PURPOSES ONLY. WINDOW SUPPLIER/INSTALLER IS TO PROVIDE DEFLECTION CONNECTION FOR ALL CURTAIN WALLS / WINDOW WALLS. (REFER TO STRUCTURAL DRAWINGS FOR REQUIRED DEFLECTION). ALL WINDOWS AND GLASS DOORS TO MEET MINIMUM ENERGY RATING FOR WINDOWS IN ZONE 3 OF THE O.B.C. SB-10.

NON-METAL FRAME WINDOWS/DOORS	0.325 MAX U VALUE 0.41 SOLAR HEAT GAIN COEFFICIENT
METAL FRAME (ALUM.) WINDOWS	0.325 MAX U VALUE 0.41 SOLAR HEAT GAIN COEFFICIENT
METAL FRAME DOORS	0.325 MAX U VALUE 0.41 SOLAR HEAT GAIN COEFFICIENT
INSULATED GLASS UNIT ASSEMBLY	0.29 U-VALUE WINTER 0.27 U-VALUE SUMMER 0.41 SOLAR HEAT GAIN COEFFICIENT

CONTRACTOR MUST CHECK AND VERIFY ALL DIMENSIONS AND JOB CONDITIONS BEFORE PROCEEDING WITH WORK. ALL DRAWINGS MAY BE SUBJECT TO CHANGE DUE TO COMMENTS FROM MUNICIPAL DEPARTMENTS AND OTHER AGENCIES WITH AUTHORITY. ALL DRAWINGS AND SPECIFICATIONS ARE THE PROPERTY OF THE ARCHITECTS AND MUST BE RETURNED AT THE COMPLETION OF THE WORK. THE CONTRACTOR WORKING FROM DRAWINGS NOT SPECIFICALLY MARKED FOR CONSTRUCTION MUST ASSUME FULL RESPONSIBILITY AND BEAR COSTS FOR ANY CORRECTIONS OR DAMAGES RESULTING FROM HIS OR HER WORK.

KEY TO DETAIL LOCATION

No.	DETAIL NUMBER
No.	DRAWING SHEET NUMBER

DRAWING SETS ISSUED	No.	DATE (DD.MM.YY)	BY
FOR CLIENT REVIEW	1	02.05.23	KNYMH
ISSUED FOR SPA SUBMISSION 1	2	19.05.23	KNYMH
ISSUED FOR COORDINATION	3	18.07.23	KNYMH
ISSUED FOR SPA 2 SUBMISSION	4	08.09.23	KNYMH
ISSUED FOR BUDGET SET	5	02.10.23	KNYMH
ISSUED FOR PERMIT SUBMISSION	6	15.11.23	KNYMH
ISSUED FOR TENDER	7	18.12.23	KNYMH
ISSUED FOR SPA SUBMISSION 3	8	12.01.24	KNYMH

ALL PREVIOUS ISSUES OF THIS DRAWING ARE SUPERSEDED

REVISIONS TO DRAWING	No.	DATE (DD.MM.YY)	BY

BUILDING PERMIT NUMBER:  
NOT FOR CONSTRUCTION WITHOUT PERMIT

**KNYMH**  
ARCHITECTURE • SOLUTIONS

KNYMH INC.  
1006 SKYVIEW DRIVE • SUITE 101  
BURLINGTON, ONTARIO • L7P 0V1  
T 905.639.6595  
F 905.639.0394  
www.knymh.com info@knymh.com

ONTARIO ASSOCIATION OF ARCHITECTS  
PRZEMYSŁAW MYŚKOWSKI  
LICENCE 7894

**mattamyHOMES**

**CLOCKWORK - Phase 2**  
3008 WILLIAM CUTMORE BLVD.  
OAKVILLE, ONTARIO

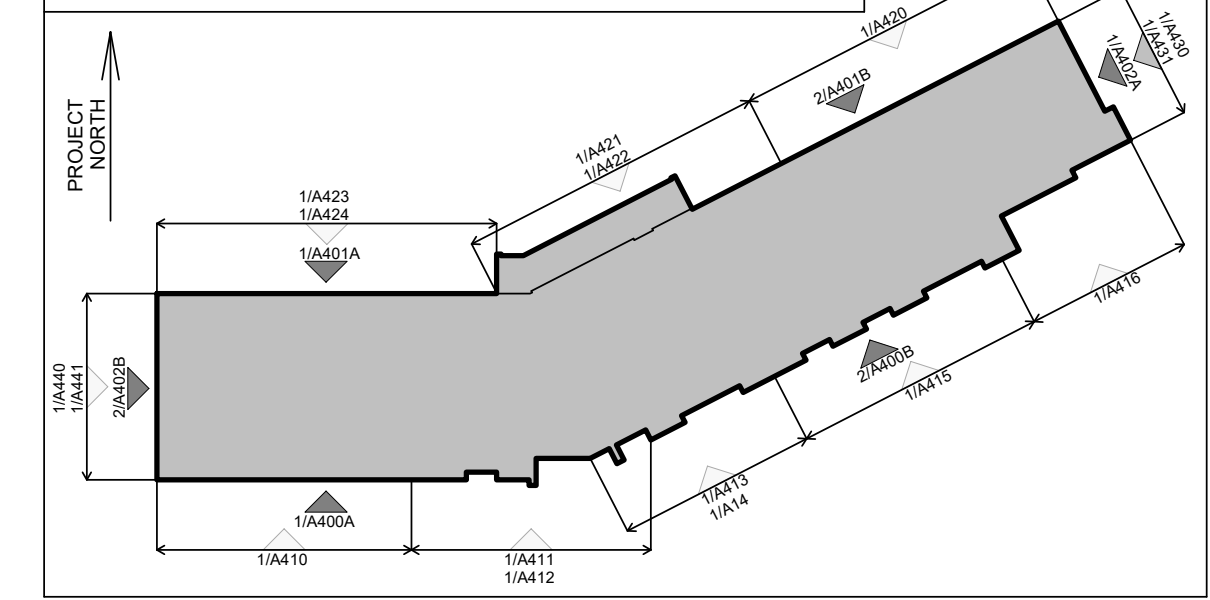
DRAWING SHEET TITLE:  
**EAST/WEST ELEVATIONS**

DRAWING SCALE: As indicated	PROJECT NUMBER: <b>22404</b>
DRAWN BY: Author	CHECKED BY: Checker
DRAWING VERSION: PLOT DATE: 2023-12-08	DRAWING SHEET NUMBER: <b>A402</b>

**LEGEND**

GL	GLAZING PANEL
G.GL	GUARD GLAZING PANEL
SP-1	SPANDREL/METAL PANEL - LIGHT
SP-2	SPANDREL/METAL PANEL - DARK
MP1	PREFIN METAL PANEL - WHITE
MP-2	PREFIN METAL PANEL - DARK
MP3	PREFIN METAL PANEL - WOOD
LU	LUMON SYSTEM PANEL
GGL	ALUMINUM RAILING W/ GLASS
BR	BRICK

**ELEVATION KEY PLAN**



CONTRACTOR MUST CHECK AND VERIFY ALL DIMENSIONS AND JOB CONDITIONS BEFORE PROCEEDING WITH WORK

ALL DRAWINGS MAY BE TO BE SUBJECT TO CHANGE DUE TO COMMENTS FROM MUNICIPAL DEPARTMENTS AND OTHER AGENCIES WITH AUTHORITY

ALL DRAWINGS AND SPECIFICATIONS ARE THE PROPERTY OF THE ARCHITECTS AND MUST BE RETURNED AT THE COMPLETION OF THE WORK

THE CONTRACTOR WORKING FROM DRAWINGS NOT SPECIFICALLY MARKED FOR CONSTRUCTION MUST ASSUME FULL RESPONSIBILITY AND BEAR COSTS FOR ANY CORRECTIONS OR DAMAGES RESULTING FROM HIS OR HER WORK

**KEY TO DETAIL LOCATION**

No.	DETAIL NUMBER
No.	DRAWING SHEET NUMBER

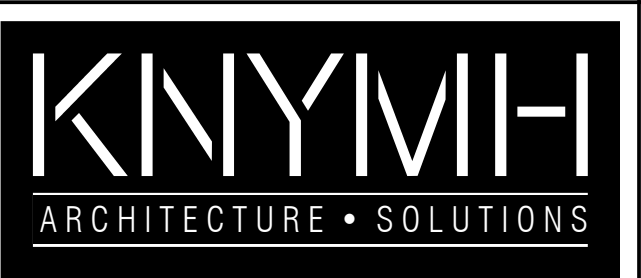
DRAWING SETS ISSUED	No.	DATE (DD.MM.YY)	BY
FOR CLIENT REVIEW	1	02.05.23	KNYMH
ISSUED FOR SPA SUBMISSION 1	2	19.05.23	KNYMH
ISSUED FOR COORDINATION	3	18.07.23	KNYMH
ISSUED FOR SPA 2 SUBMISSION	4	08.09.23	KNYMH
ISSUED FOR BUDGET SET	5	02.10.23	KNYMH
ISSUED FOR PERMIT SUBMISSION	6	15.11.23	KNYMH
ISSUED FOR TENDER	7	18.12.23	KNYMH
ISSUED FOR SPA SUBMISSION 3	8	12.01.24	KNYMH

ALL PREVIOUS ISSUES OF THIS DRAWING ARE SUPERSEDED

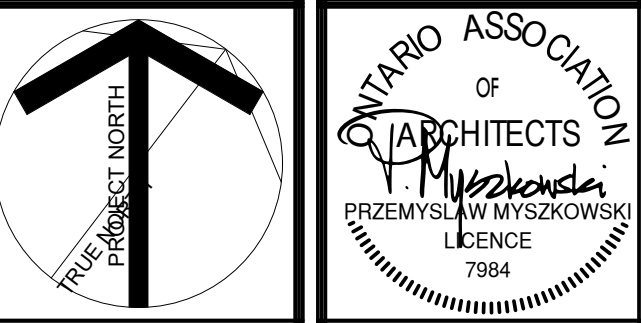
**REVISIONS TO DRAWING**

REVISIONS TO DRAWING	No.	DATE (DD.MM.YY)	BY

BUILDING PERMIT NUMBER:  
**NOT FOR CONSTRUCTION WITHOUT PERMIT**



KNYMH INC.  
1006 SKYVIEW DRIVE • SUITE 101  
BURLINGTON, ONTARIO • L7P 0V1  
T 905.639.6595  
F 905.639.0394  
www.knymh.com info@knymh.com



**CLOCKWORK - Phase 2**  
3008 WILLIAM CUTMORE BLVD.  
OAKVILLE, ONTARIO

DRAWING SHEET TITLE:  
**ENLARGED EAST ELEVATION - 1**

DRAWING SCALE: As indicated  
PROJECT NUMBER: **22404**

DRAWN BY: Author  
CHECKED BY: Checker  
DRAWING SHEET NUMBER: **A430**  
DRAWING VERSION:  
PLOT DATE: 2023-12-08



**1 ENLARGED EAST ELEVATION - 1**  
A430 1:50