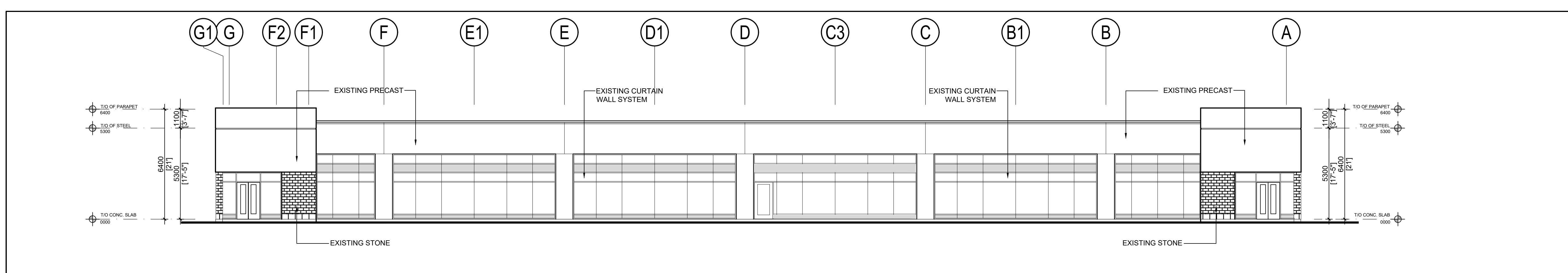
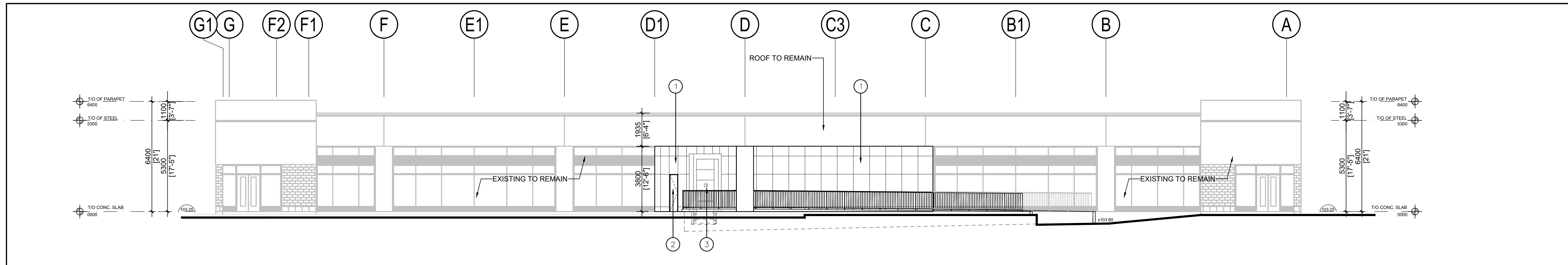


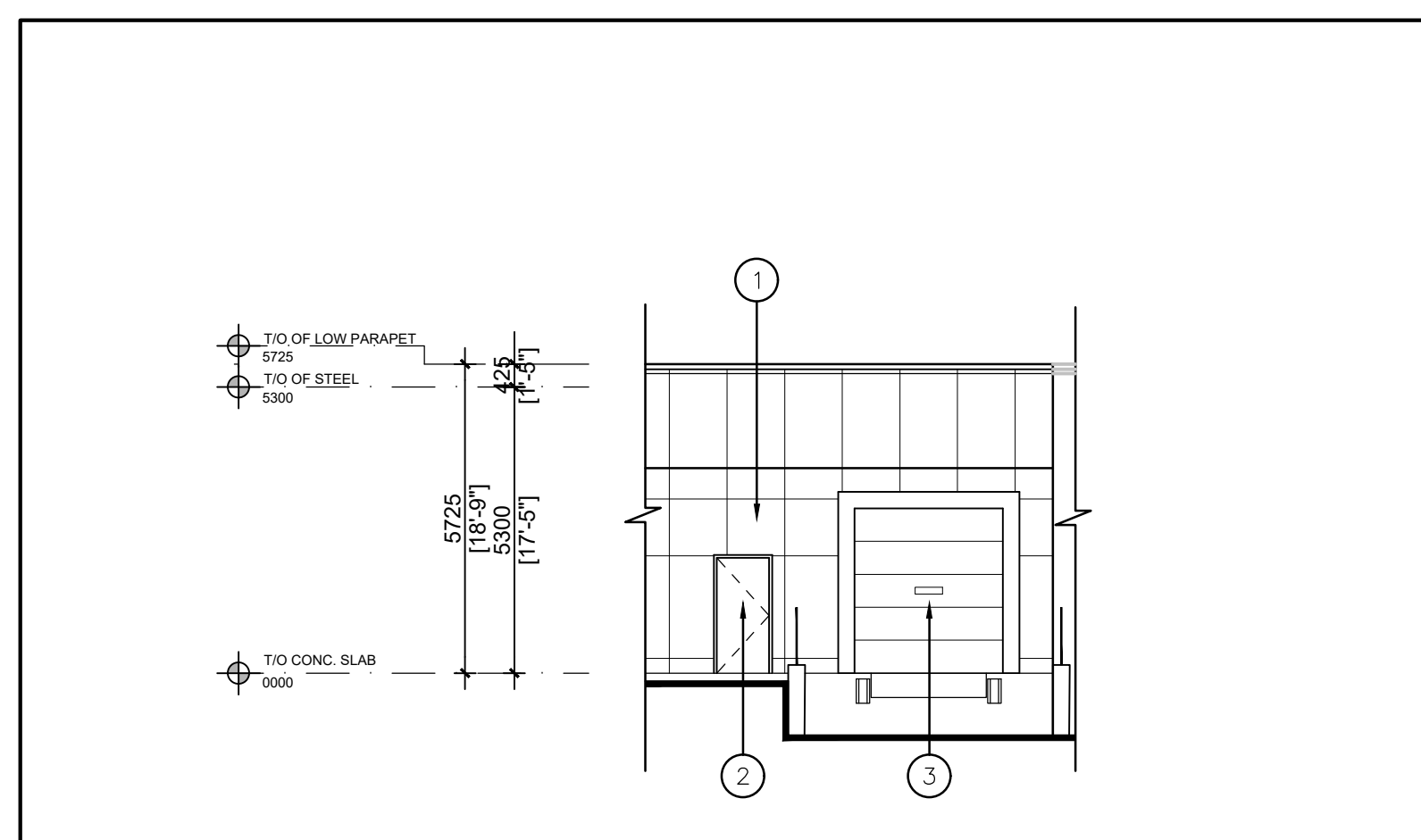
No.	ISSUED	DATE
1	ISSUED FOR PAC	JULY 14, 2023
2	ISSUED FOR SPA	OCT. 6, 2023
3	RE-ISSUED FOR SPA	DEC. 18, 2023



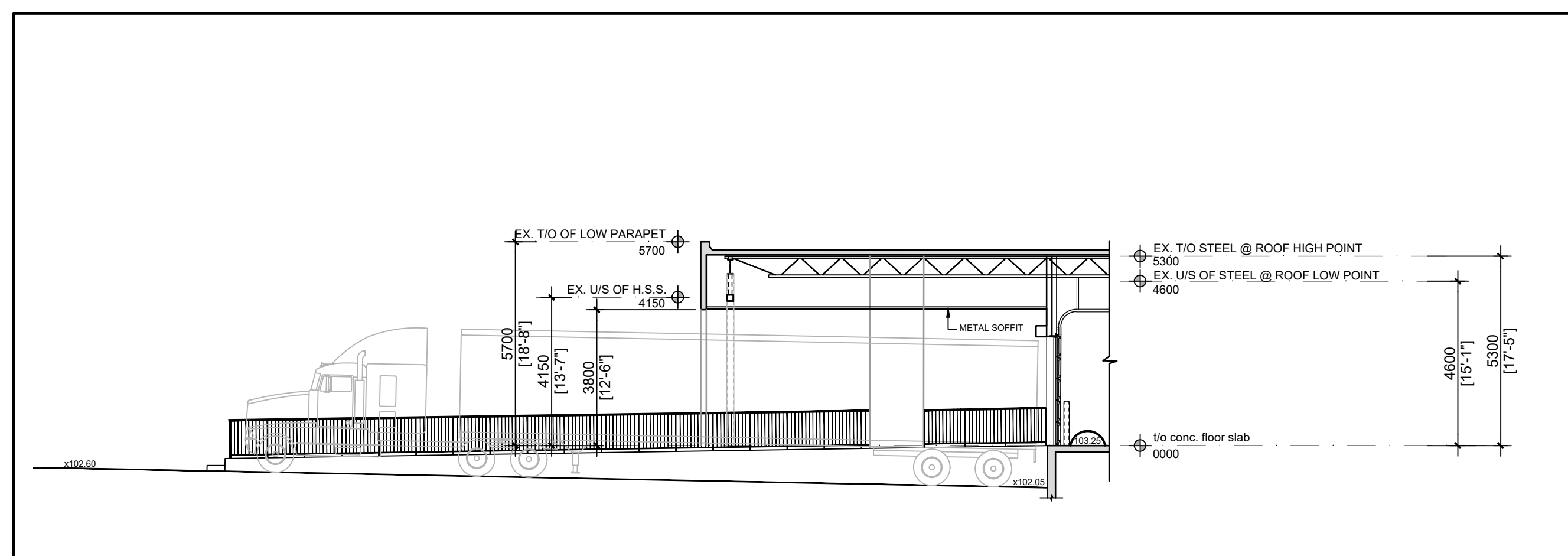
1 EXISTING NORTH ELEVATION
A-3.0 I:125



2 PROPOSED NORTH ELEVATION
A-3.0 I:125



3 PARTIAL ELEVATION AT LOADING DOOR
A-3.0 I:125



4 SECTION AT LOADING DOOR
A-3.0 I:125

MATERIAL LEGEND

- INSULATED METAL PANELS BY KINGSPAN OR APPROVED EQUAL. COLOUR TO WHITE. SAMPLE TO BE SUBMITTED FOR ARCHITECT'S APPROVAL.
- INSULATED HOLLOW METAL DOOR IN PRESSED STEEL THERMAL FRAME. DOOR AND FRAME PAINTED TO MATCH ADJACENT WALL COLOUR.
- INSULATED HOLLOW METAL OVERHEAD DOOR C/W TEMPERED GLASS VIEW WINDOW. COLOUR TO BE GREY TO MATCH INSULATED METAL PANELS. C/W DOCK SEAL, DOCK LEVELLER AND DOCK BUMPERS.

No.	REVISION	DATE
-----	----------	------

BALDASSARRA
Architects Inc.

30 Great Gulf Drive, Unit 20 | Concord ON | L4K 0K7
T. 905.660.0722 | www.baldassarra.ca



OWNERS INFORMATION:
BLACKWOOD PARTNERS

GREAT LAKES BUSINESS PARK
3421 SUPERIOR COURT
OAKVILLE, ONTARIO

ELEVATIONS BUILDING 'C'

DATE:	DRAWN BY:	CHECKED:	SCALE:
OCT. 2023	HP		AS NOTED
PROJECT No. P-23019		DRAWING No. A-3.0	

01/24/24, Great Lakes - Bldg. C - Loading, West of 23019 - Dept. Lines - Bldg. C - Truck Parking/Loading Area - Current Drawing No. 23019 - A-3.0.dwg