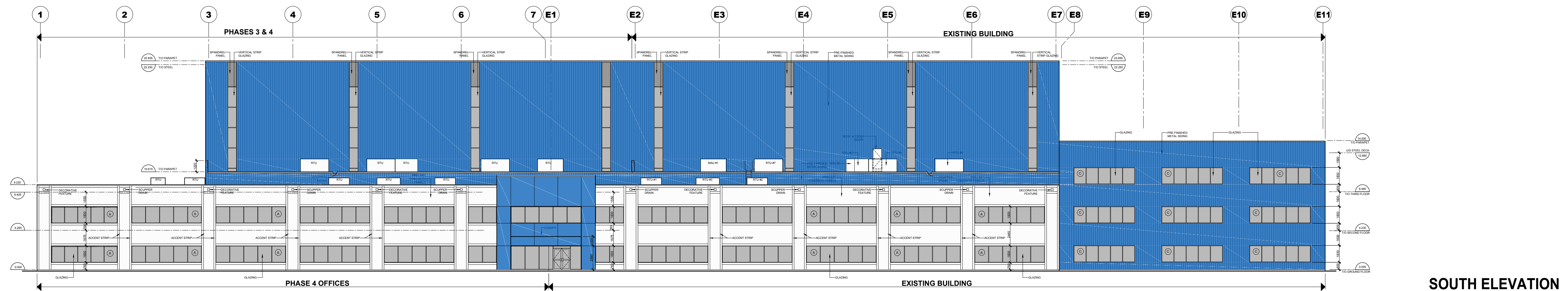
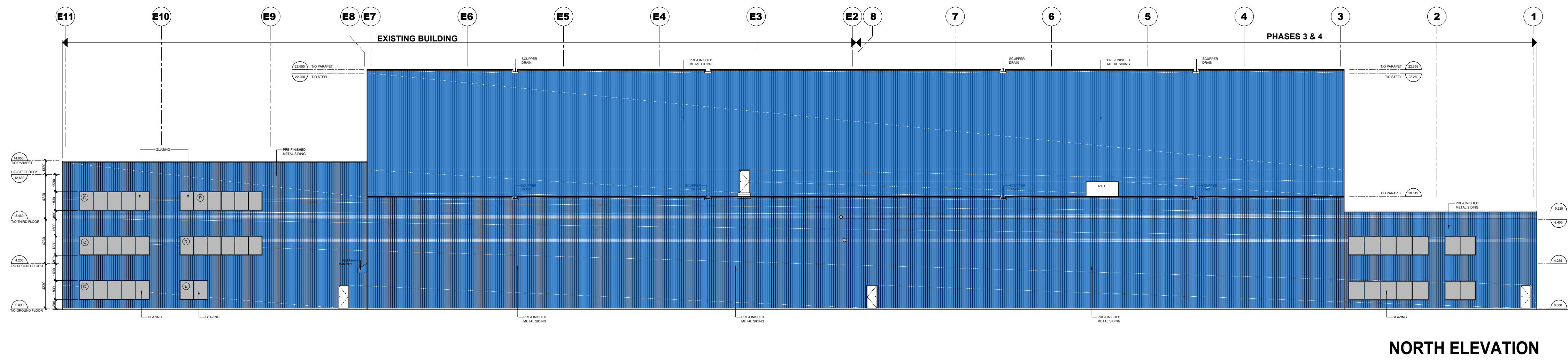
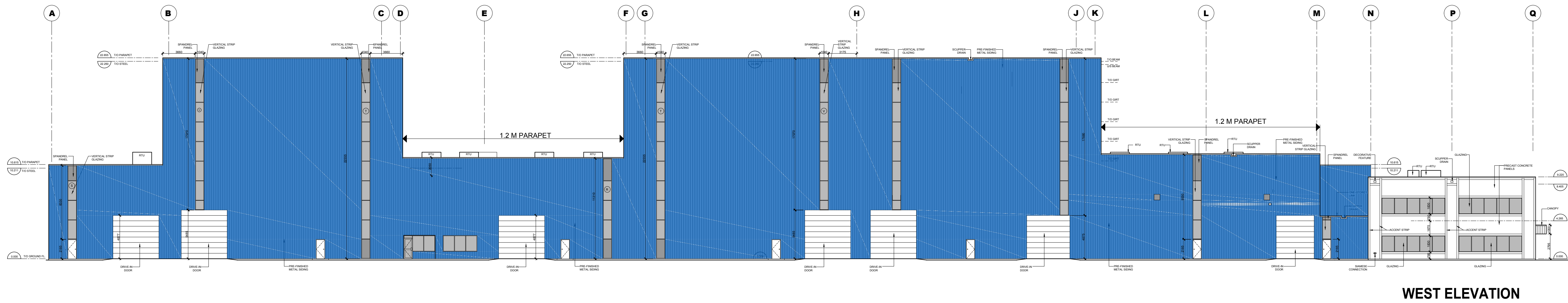


NO.	ISSUED	BY	DATE
1.	FOR SPA	N.R.	AUG. 17, 2022



NO.	REVISED	BY	DATE

Maple Reinders **MAPLE REINDERS CONSTRUCTORS LTD.**
 260 HOLIDAY INN DRIVE, SUITE 24,
 CAMBRIDGE, ON N3C 4E8
 TEL 519 220 0526 . WWW.MAPLE.CA

GLUCK PARTNERSHIP ARCHITECTS INC.
 156 DUNCAN MILL ROAD, SUITE 5
 TORONTO, ONTARIO M3B 3N2
 TEL 416 498 0201

ZETON INC.
NEW INDUSTRIAL DEVELOPMENT

455 MICHIGAN DRIVE, OAKVILLE, ONTARIO

PHASE 4 ELEVATIONS

DRAWN:	N.R.
CHECKED:	T.G.
SCALE:	1:250
DATE:	DECEMBER 10, 2019
PROJECT:	2150
DRWG. NO.:	A-3.0

