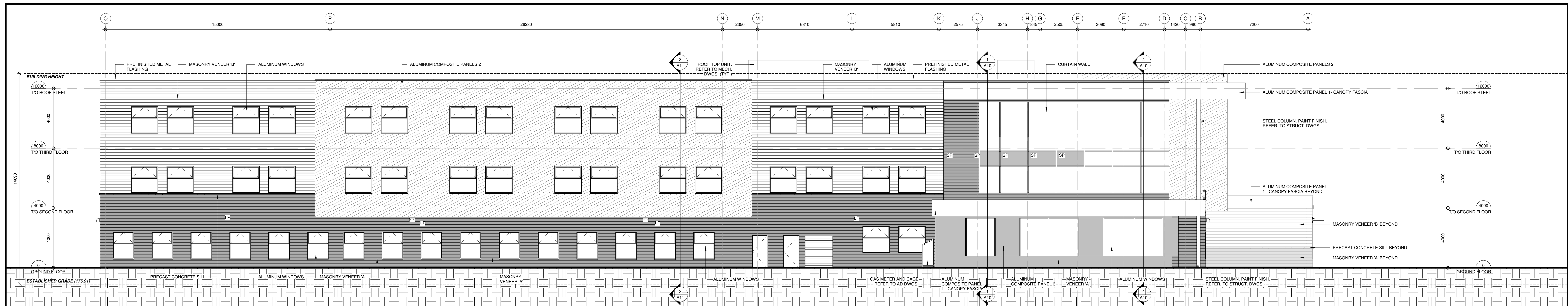
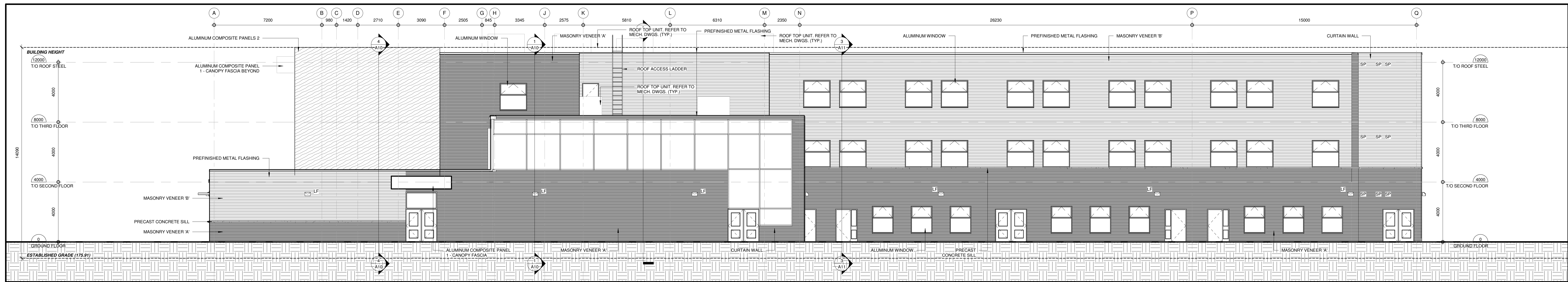


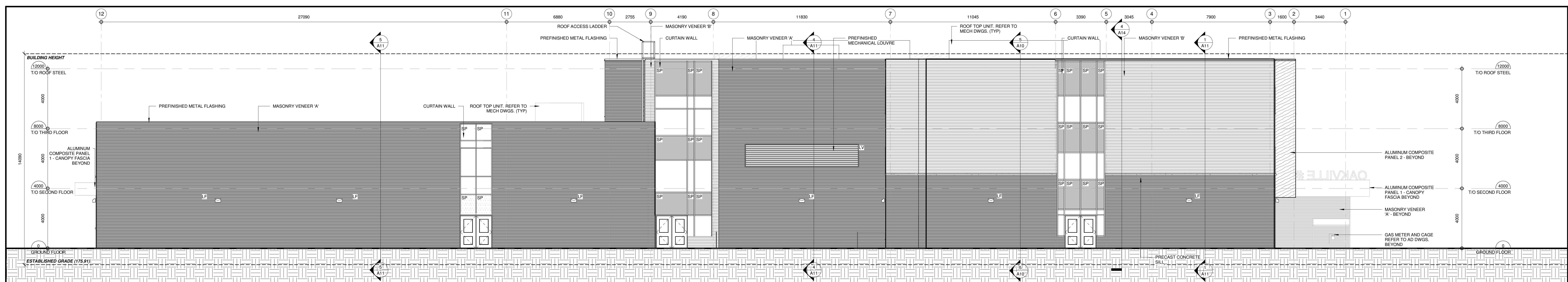
3 SOUTH ELEVATION  
SCALE: 1:100



2 WEST ELEVATION  
SCALE: 1:100



4 EAST ELEVATION  
SCALE: 1:100



1 NORTH ELEVATION  
SCALE: 1:100

**MATERIAL LEGEND**

- MASONRY VENEER 'A' (DARK GREY)
- MASONRY VENEER 'B' (LIGHT GREY)
- PRECAST SILL (CONCRETE)
- ALUMINUM COMPOSITE PANEL 1 - WHITE
- ALUMINUM COMPOSITE PANEL 2 - WOOD LOOK
- ALUMINUM COMPOSITE PANEL 3 - GREY
- SPANREL PANEL (GREEN)
- SPANREL PANEL (GREEN)
- SP SPANREL PANEL REFER TO ELEC. DWGS.
- CJ CONTROL JOINT REFER TO ELEC. DWGS.
- LF LIGHT FIXTURE REFER TO ELEC. DWGS.
- SC SCUPPER
- LV LOUVER REFER TO MECH. DWGS.
- BY BRICK VENT REFER TO MECH. DWGS.

NO.	REVISIONS	DATE
1	ISSUED FOR SITE PLAN APPROVAL & RESPONSE TO COMMENTS	05/31/22
2	ISSUED	DATE

DRAWINGS ARE NOT TO BE SCALED. CONTRACTOR MUST CHECK AND VERIFY ALL DIMENSIONS AND CONDITIONS ON THE PROJECT AND MUST REPORT ANY DISCREPANCIES TO THE CONSULTANT BEFORE PROCEEDING WITH THE WORK. THE USE OF THE DRAWINGS OR PART THEREOF IS FORBIDDEN WITHOUT THE WRITTEN APPROVAL OF THE CONSULTANT.



OAKVILLE #3 PUBLIC SCHOOL

SP 1313.005/04 WHEAT BOOM DRIVE OAKVILLE, ON

LEGAL DESCRIPTION: BLOCKS ##, REGISTERED PLAN ## & BLOCK ##, REGISTERED PLAN ##

TENDER NO. ## - ##

HALTON DISTRICT SCHOOL BOARD  
110 KINGSTON EDUCATION CENTRE  
1050 QUEENLINE  
BURLINGTON, ON L7R 1Z2  
TEL: (905) 335-3603  
FAX: (905) 335-3602

ELEVATIONS



SCALE: 1:100 PROJECT: 22104  
DATE: 3/28/2022  
DRAWN: Author DRAWING:  
CHECKED: A09  
PRINT DATE: 5/20/2022 10:22:09 AM  
REVIT FILE: T:\2019\15106102\Revit\HALTON10.DWG