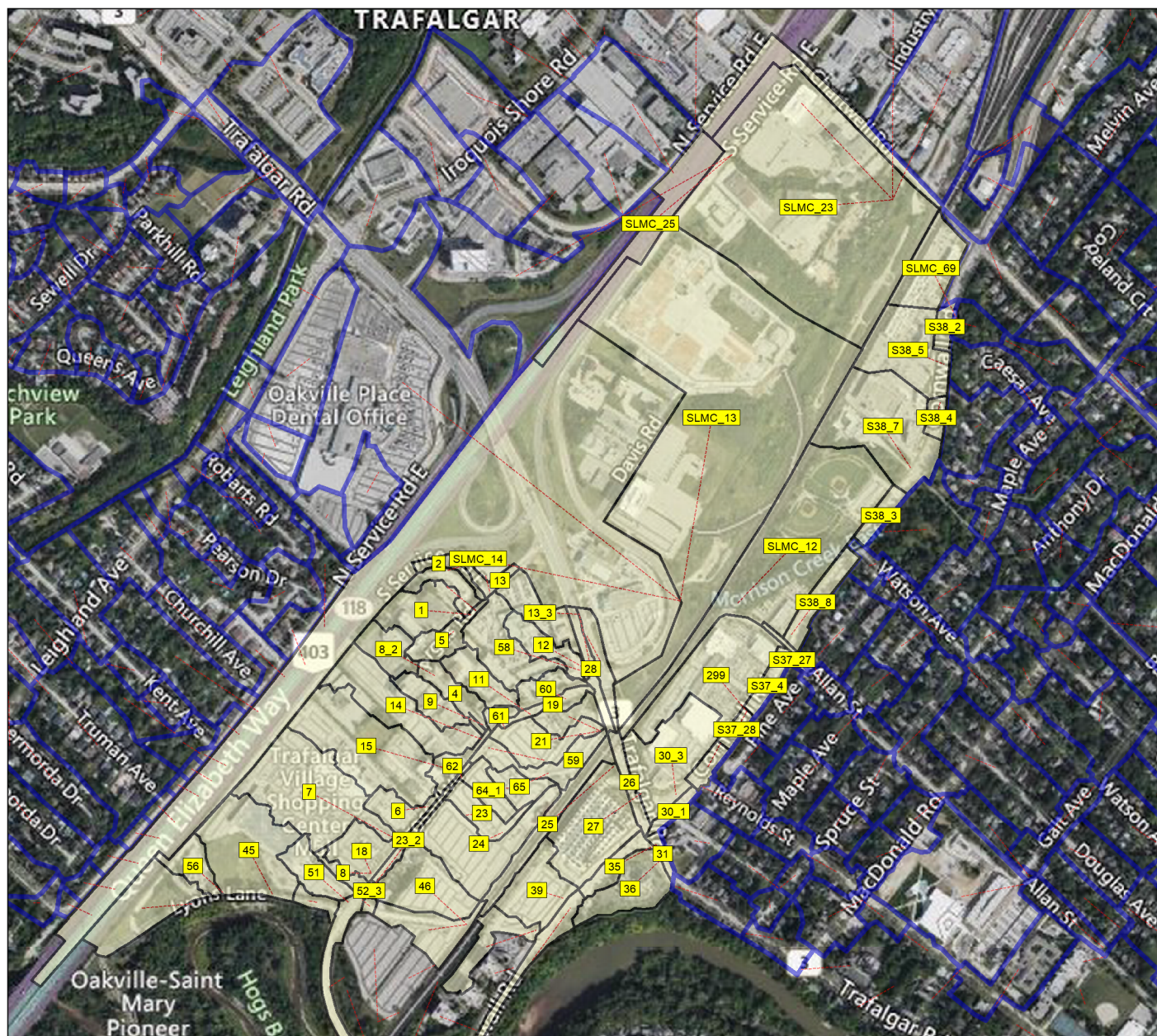


Appendix B. Catchment Delineation and Model Schematics



Existing Conditions - Midtown Subcatchments

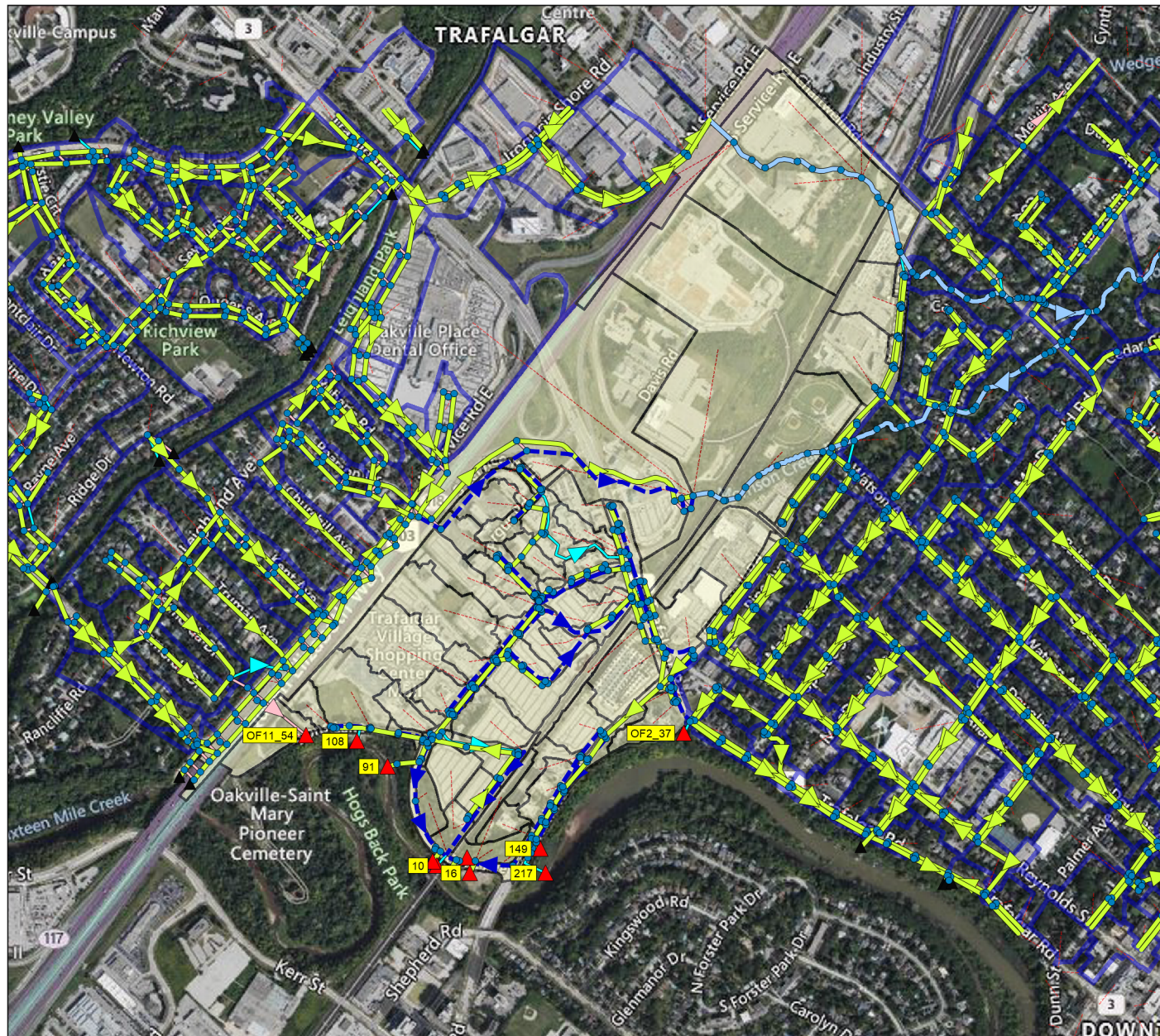
Legend

Subcatchments

- Outside of Midtown Area
- Within Midtown Area



350 m



Existing Conditions Model Schematic

Legend

- Junctions
- Outfalls
 - ▲ Outside of Midtown Area
 - ▲ Within Midtown Area
- Conduits
 - Minor System
 - Major System
 - Lower Morrison Creek (East and West)
- Orifices
- Weirs
- Outlets
- Subcatchments
 - Outside of Midtown Area
 - Within Midtown Area



450 m



Future Conditions - Midtown Subcatchments

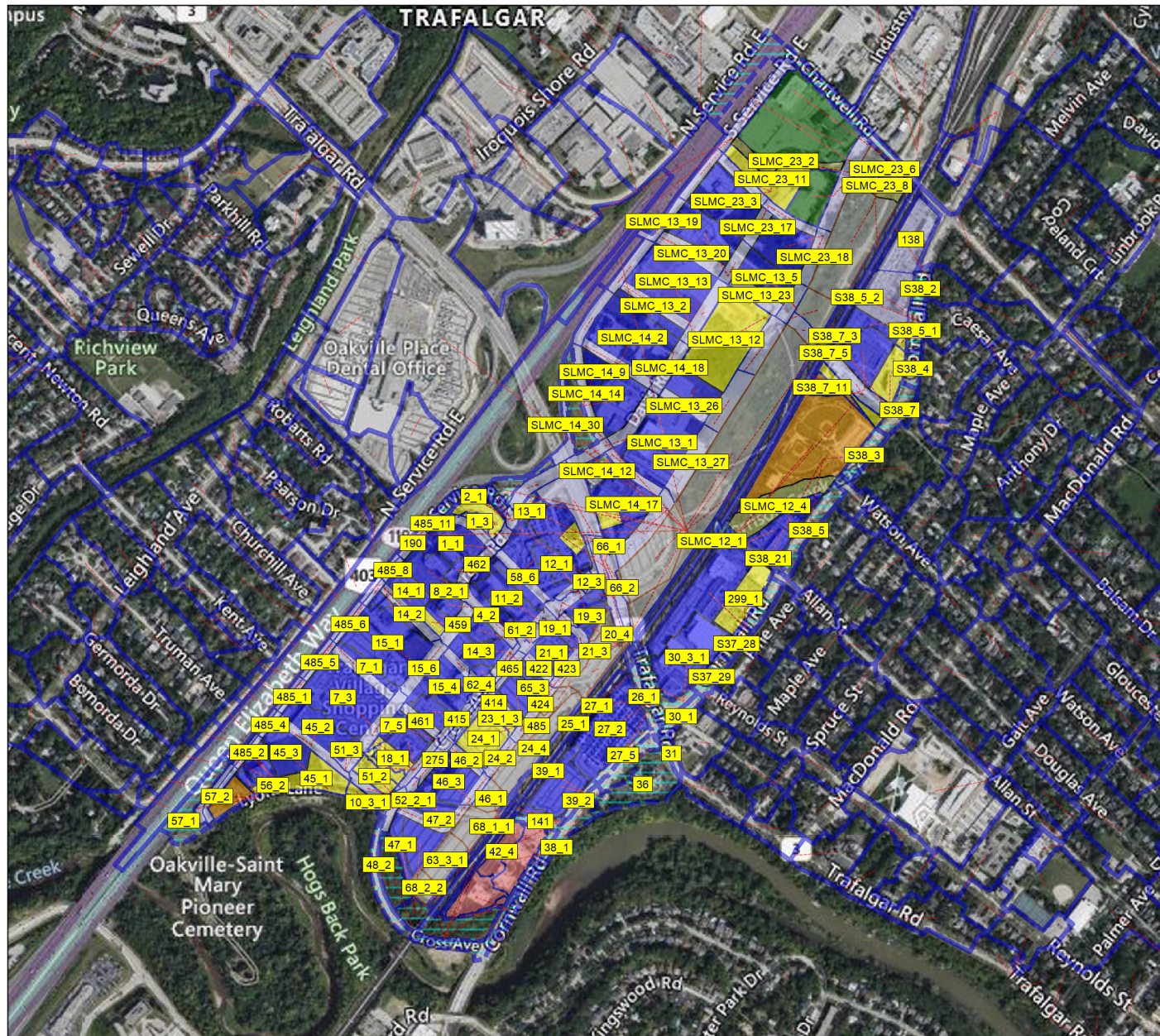
Legend

Subcatchments

- Outside of Midtown Area
- Park
- Road
- Urban Core
- Utility
- Natural Area
- Parks and Open Space
- High Density Residential
- Office Employment
- Community Commercial
- Railway
- No New Land Use



350 m



Future Conditions - Subcatchments with Labels

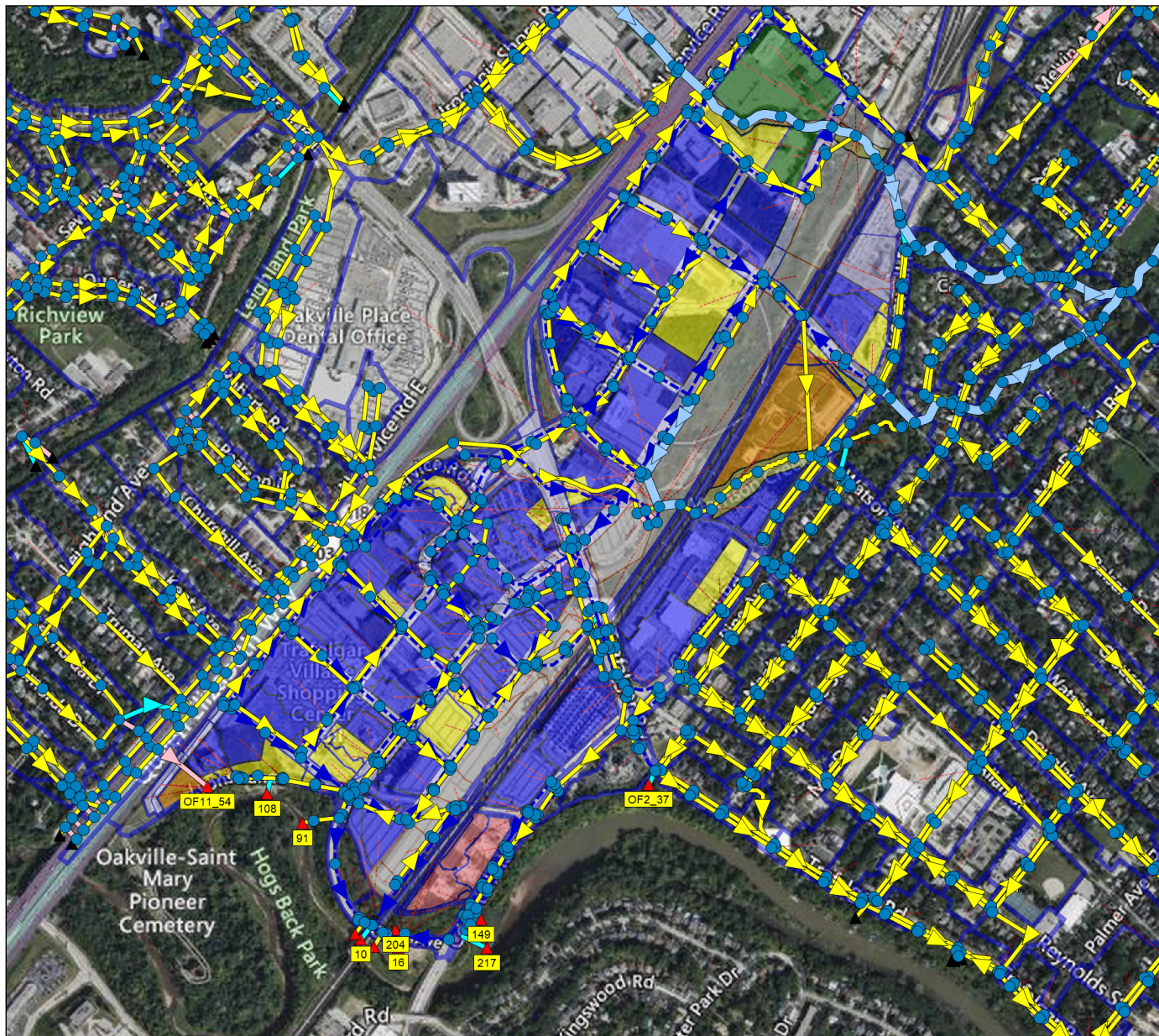
Legend

Subcatchments

- Outside of Midtown Area
- Park
- Road
- Urban Core
- Utility
- Natural Area
- Parks and Open Space
- High Density Residential
- Office Employment
- Community Commercial
- Railway
- No New Land Use



400 m



Future Uncontrolled Model

Legend

- Junctions
- Outfalls**
 - ▲ Outside of Midtown Area
 - ▲ Within Midtown Area
- Conduits**
 - Minor System
 - Major System
 - Lower Morrison Creek (East and West)
- Orifices
- Weirs
- Outlets



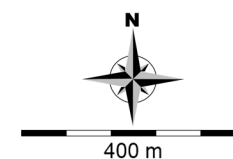
400 m

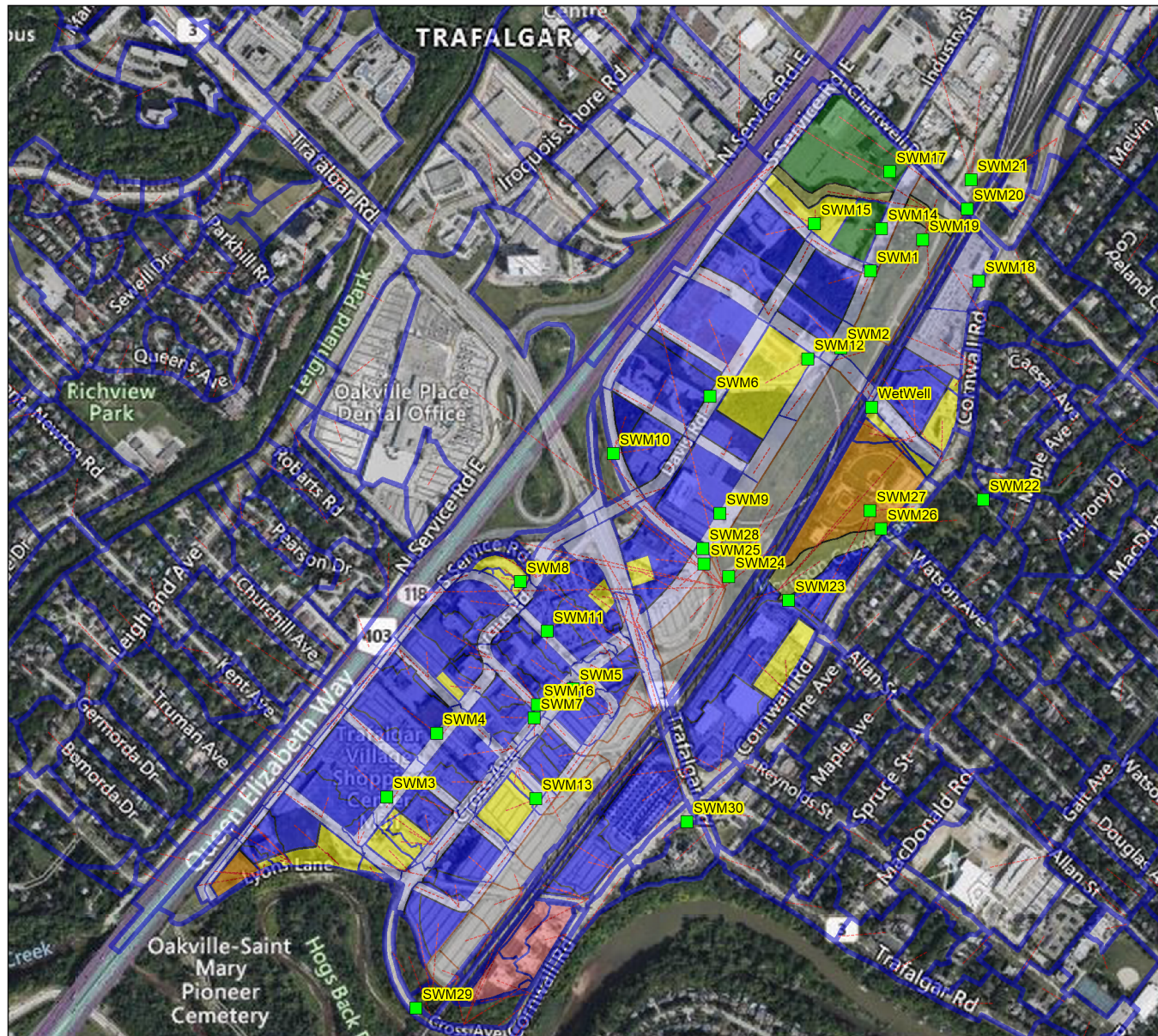


Future Controlled Model Schematic

Legend

- Junctions
- Outfalls**
 - ▲ Outside of Midtown Area
 - ▲ Within Midtown Area
- Storages
- Conduits**
 - Minor System
 - - Major System
 - Proposed Underground Superpipes
 - Proposed Forcemain
 - Proposed Pipe Upsizing
 - Lower Morrison Creek (East and West)
 - Proposed Channel
- Pumps
- Orifices
- Weirs
- Outlets





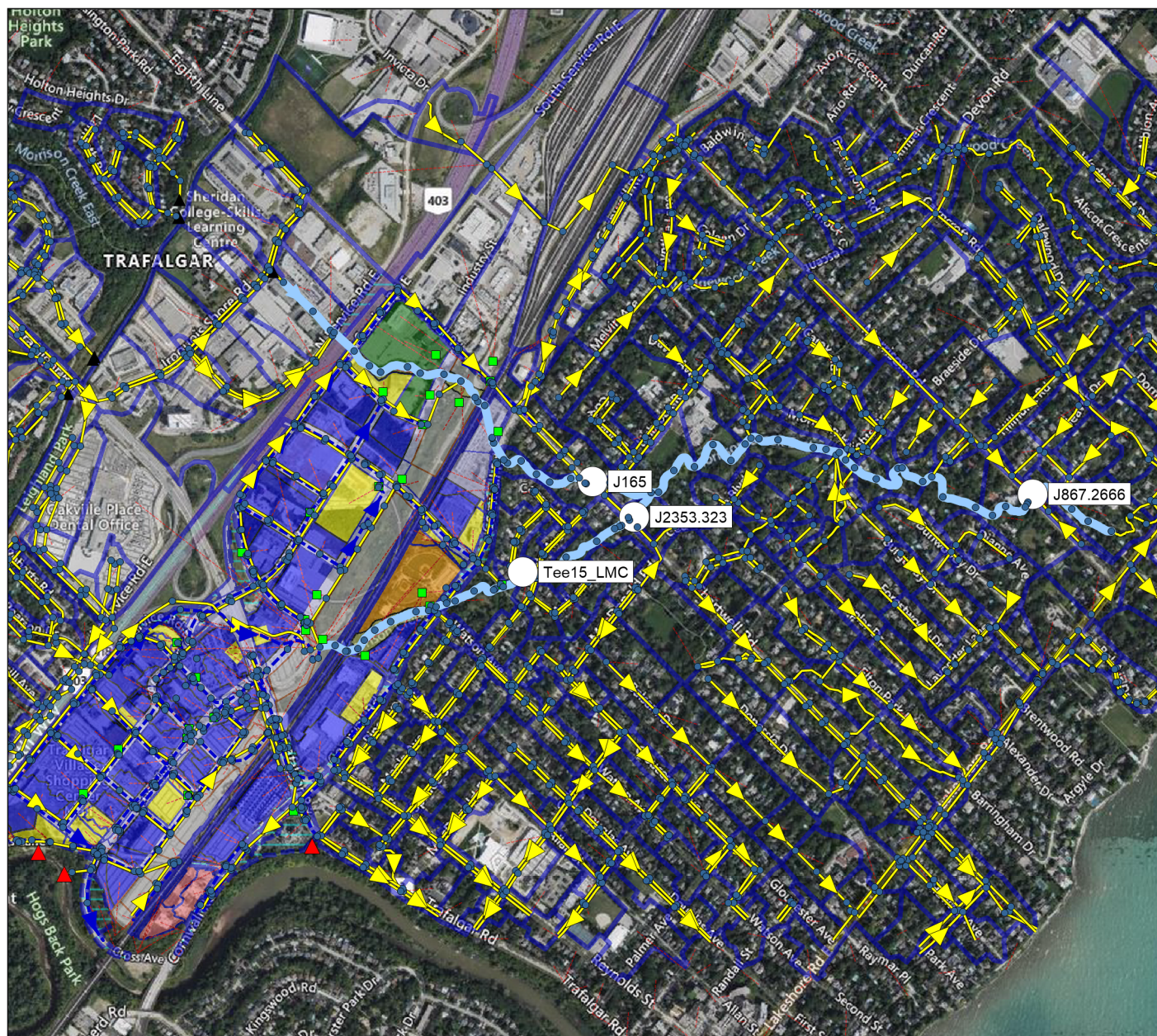
Proposed 100-Year SWM Facilities Locations

Legend

- Storages
- Subcatchments
- Outside of Midtown Area
- Park
- Road
- Urban Core
- Utility
- Natural Area
- Parks and Open Space
- High Density Residential
- Office Employment
- Community Commercial
- Railway



400 m



VO Flow Node Locations from DS Impact Assessment

Legend

Junctions

- VO Flow Nodes
- Nodes

Outfalls

- ▲ Outside of Midtown Area
- ▲ Within Midtown Area
- Storages

Conduits

- Minor System
- - - Major System
- Lower Morrison Creek (East and West)



0.5 km