

NOTES

BEARINGS ARE UTM GRID, DERIVED FROM OBSERVED REFERENCE POINTS A AND B, BY REAL TIME NETWORK (RTN) OBSERVATIONS, UTM ZONE 17, NAD83 (CSRS) (2010.0).

DISTANCES ARE GROUND AND CAN BE CONVERTED TO GRID BY MULTIPLYING BY THE COMBINED SCALE FACTOR OF 0.999708.

INTEGRATION DATA		
OBSERVED REFERENCE POINTS (ORPs): UTM ZONE 17, NAD83 (CSRS) (2010.0).		
COORDINATES TO URBAN ACCURACY PER SECTION 14 (2) OF O.REG 216/10.		
POINT ID	EASTING	NORTHING
ORP (A)	601 684.73	4 813 712.38
ORP (B)	601 788.66	4 813 618.39
COORDINATES CANNOT, IN THEMSELVES, BE USED TO RE-ESTABLISH CORNERS OR BOUNDARIES SHOWN ON THIS PLAN.		
THE RESULTANT TIE BETWEEN ORP (A) AND ORP (B) IS 140.16 N 47°52'30" W		

SCHEDULE			
PART	LOT	CONCESSION	PIN
1	PART OF LOT 19	CONCESSION 1 NORTH OF DUNDAS STREET	PART OF PIN 24929-6947 (LT)
2			

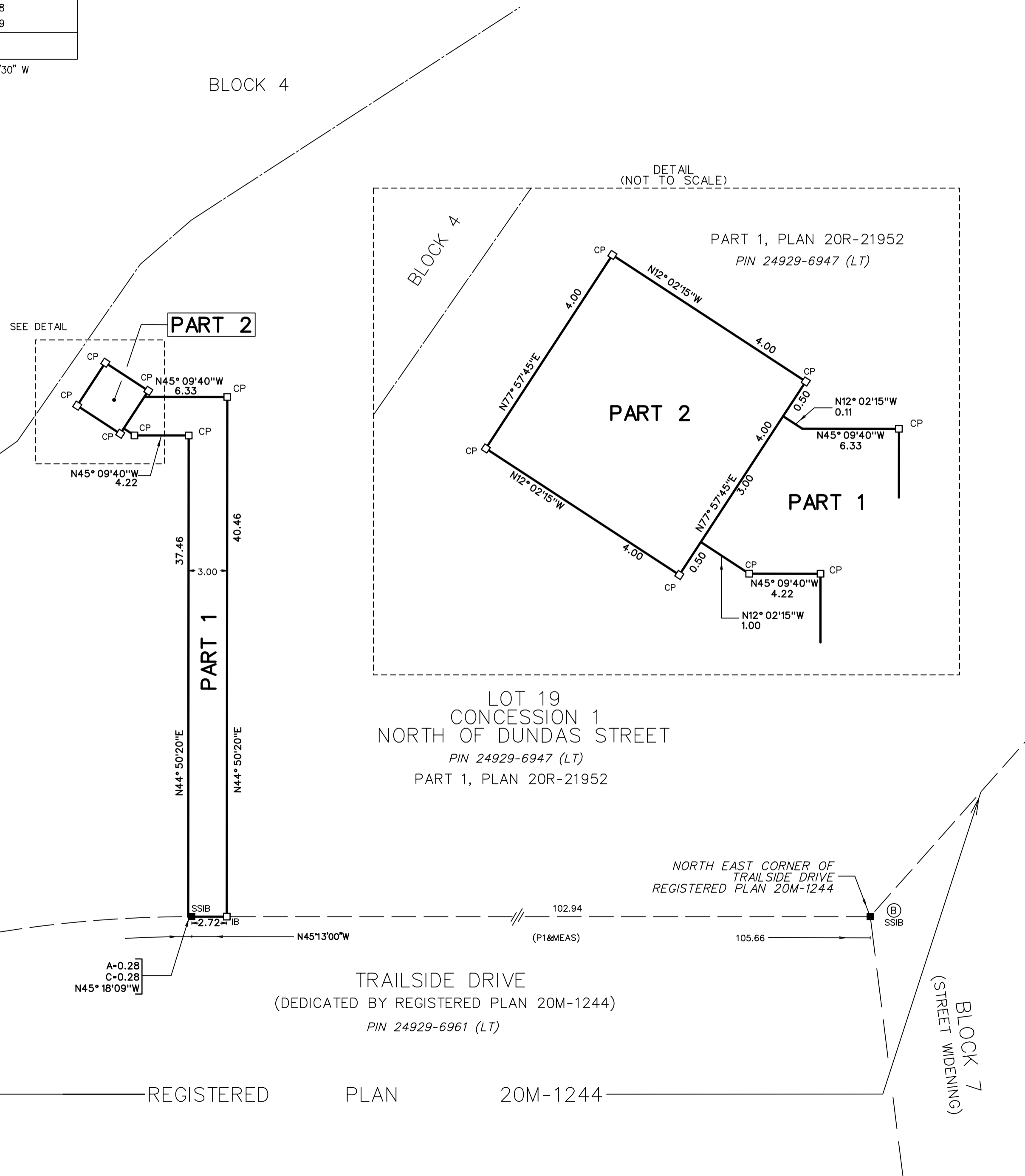
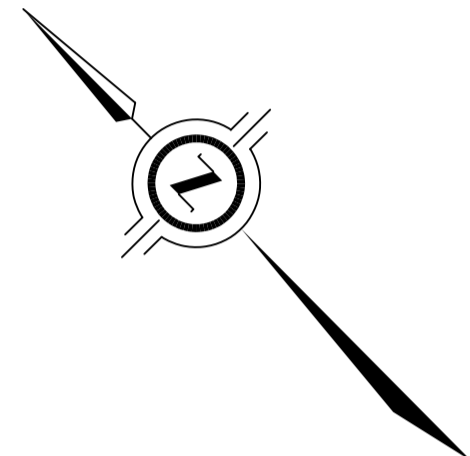
PLAN 20R-22479

Received and deposited

August 1st, 2023

Courtney Boyle

Representative for the
Land Registrar for the
Land Titles Division of
Halton (No.20)



PLAN OF SURVEY OF
**PART OF LOT 19, CONCESSION 1
NORTH OF DUNDAS STREET**
GEOGRAPHIC TOWNSHIP OF TRAFALGAR
TOWN OF OAKVILLE
REGIONAL MUNICIPALITY OF HALTON

SCALE 1 : 250
5 0 5 10 15 metres

THE INTENDED PLOT SIZE OF THIS PLAN IS 609mm IN WIDTH BY 457mm IN HEIGHT WHEN PLOTTED AT A SCALE OF 1:250

J.D. BARNES LIMITED

METRIC DISTANCES AND COORDINATES SHOWN ON THIS PLAN ARE IN METRES AND CAN BE CONVERTED TO FEET BY DIVIDING BY 0.3048.

LEGEND

- DENOTES SURVEY MONUMENT FOUND
 - DENOTES SURVEY MONUMENT SET
 - CP DENOTES CONCRETE PIN
 - IB DENOTES IRON BAR
 - WIT DENOTES WITNESS
 - MEAS DENOTES MEASURED
 - P1 DENOTES REGISTERED PLAN 20M-1244
- N=NORTH / S=SOUTH / E=EAST / W=WEST

ALL FOUND SURVEY MONUMENTS ARE J.D. BARNES LTD., UNLESS OTHERWISE NOTED.

SURVEYOR'S CERTIFICATE

- I CERTIFY THAT:
- THIS SURVEY AND PLAN ARE CORRECT AND IN ACCORDANCE WITH THE SURVEYS ACT, THE SURVEYORS ACT AND THE LAND TITLES ACT AND THE REGULATIONS MADE UNDER THEM.
 - THE SURVEY WAS COMPLETED ON JULY 12th 2023.

JULY 17th, 2023
DATE

R.S. Querubin
R. S. QUERUBIN
ONTARIO LAND SURVEYOR

THIS PLAN OF SURVEY RELATES TO AOLS PLAN SUBMISSION FORM NUMBER 2207004

<p>J. D. BARNES LIMITED SURVEYING MAPPING GIS</p> <p>LAND INFORMATION SPECIALISTS 401 WHEELABRATOR WAY, SUITE A, MILTON, ON L9T 3C1 T: (905) 875-9955 F: (905) 875-9956 www.jdbarnes.com</p>	DRAWN BY: MA	CHECKED BY: RSQ	REFERENCE NO.: 17-30-127-18-B
	PLOTTED: 7/26/2023	DATED: JULY 26, 2023	