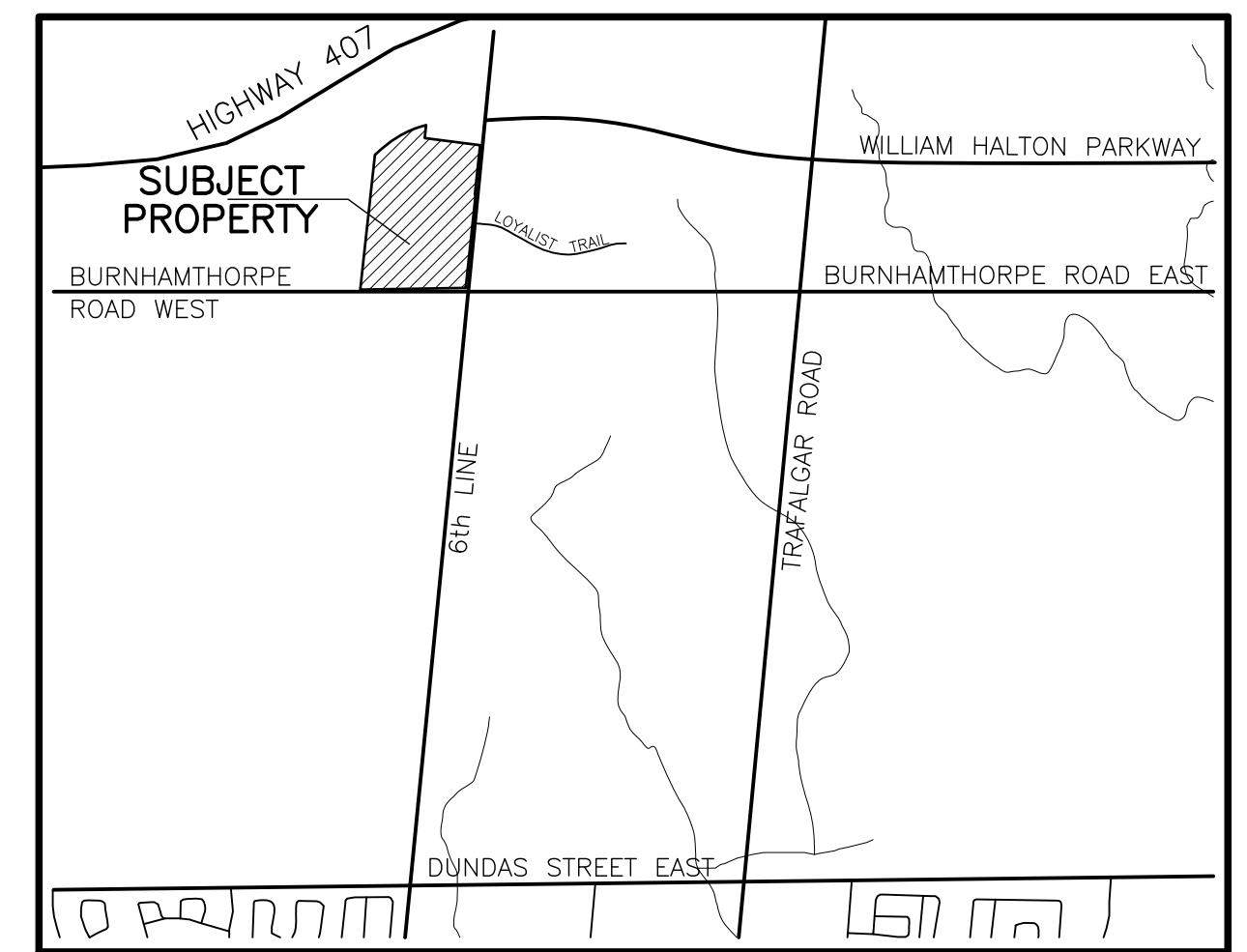


DRAFT PLAN OF SUBDIVISION PART OF LOT 16, CONCESSION 2 NORTH OF DUNDAS STREET (GEOGRAPHIC TOWNSHIP OF TRAFALGAR) TOWN OF OAKVILLE REGIONAL MUNICIPALITY OF HALTON

SCALE 1:1500

DRAFT PLAN T-



KEY PLAN

SECTION 51, PLANNING ACT, ADDITIONAL INFORMATION

- A. AS SHOWN ON DRAFT PLAN
- B. AS SHOWN ON DRAFT PLAN
- C. AS SHOWN ON DRAFT PLAN
- D. SEE SCHEDULE OF LAND USE
- E. AS SHOWN ON DRAFT PLAN
- F. AS SHOWN ON DRAFT PLAN
- G. AS SHOWN ON DRAFT PLAN
- H. MUNICIPAL PIPED WATER AVAILABLE AT TIME OF DEVELOPMENT
- I. CLAY-LOAM
- J. AS SHOWN ON DRAFT PLAN
- K. SANITARY AND STORM SEWERS, GARBAGE COLLECTION, FIRE PROTECTION
- L. AS SHOWN ON DRAFT PLAN

SURVEYOR'S CERTIFICATE

I HEREBY CERTIFY THAT THE BOUNDARIES OF THE LAND TO BE SUBDIVIDED AND THEIR RELATIONSHIP TO THE ADJACENT LANDS ARE CORRECTLY SHOWN.

DATE JANUARY 4, 2022

Ross Denbroeder
ROSS DENBROEDER OLS

OWNER'S CERTIFICATE

I AUTHORIZE KLM PLANNING PARTNERS INC. TO PREPARE AND SUBMIT THIS DRAFT PLAN OF SUBDIVISION TO THE TOWN OF OAKVILLE FOR APPROVAL.

OWNER

SIXTH OAK INC.

145 REYNOLDS STREET
SUITE 400
OAKVILLE, ONTARIO
L6J 0A7

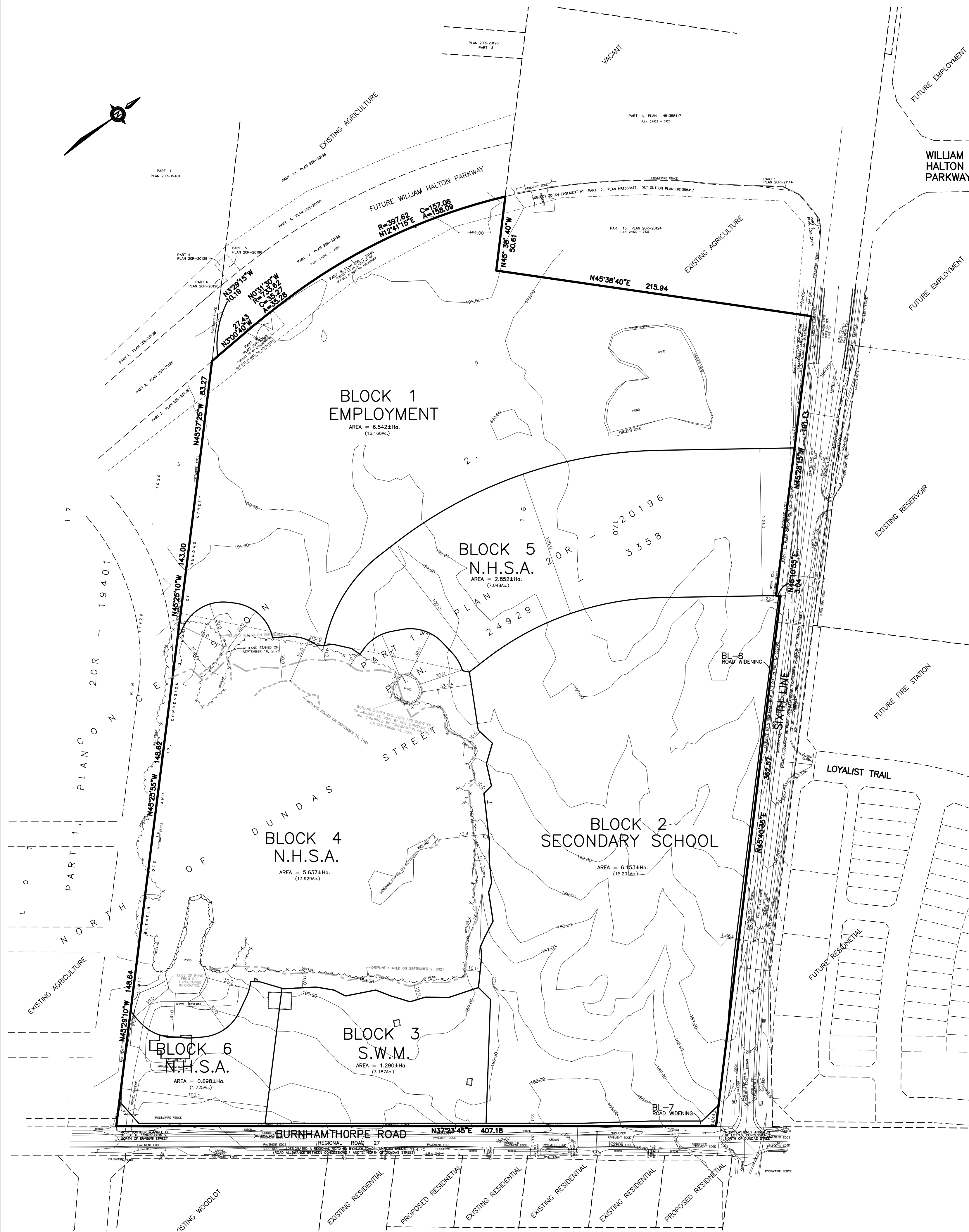
Silvio Guglietti
SILVIO GUGLIETTI A.S.O.

SCHEDULE OF LAND USE

TOTAL AREA OF LAND TO BE SUBDIVIDED=23.324±Ha. (57.635±AcS.)

BLOCKS	±Ha.	±AcS.
BLOCK 1 - EMPLOYMENT	1	6.542 16.166
BLOCK 2 - SECONDARY SCHOOL	1	6.153 15.204
BLOCK 3 - STORM WATER MANAGEMENT	1	1.290 3.187
BLOCKS 4-6 - NATURAL HERITAGE SYSTEM AREA	3	9.187 22.702
BLOCKS 7 & 8 - ROAD WIDENING	2	0.152 0.376
TOTAL	8	23.324 57.635

NOTE - ELEVATIONS RELATED TO CANADIAN GEODETIC DATUM



PROJECT No. P-3209
SCALE 1:1500 JANUARY 21, 2022
(3209DES7) X-REF: (3209MAS1 & 3209TOPO1)

KLM DWG. No. - 22:1
PLANNING PARTNERS INC. 64 JARDIN DRIVE - UNIT 1B, CONCORD ONTARIO L4K 3P3
TEL: (905)669-4055 FAX: (905)669-0097 design@klmplanning.com

Planning • Design • Development