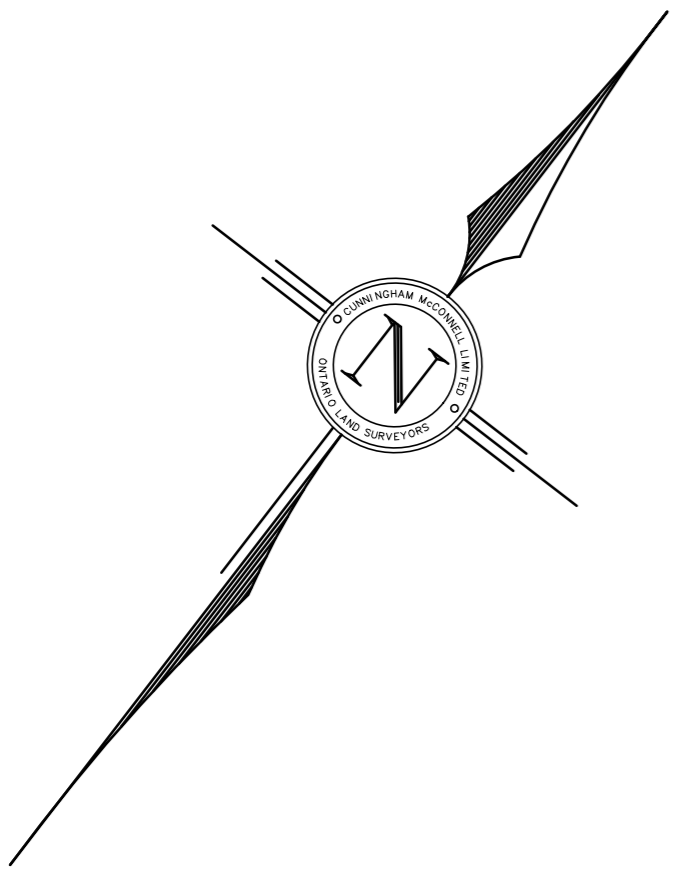


PRELIMINARY JANUARY 13, 2022



SCHEDULE				
PART	LOT	CONCESSION	PIN	AREA
1		2	PART OF 24929-3358 (LT)	439 SQ. M.
2		NORTH OF DUNDAS STREET (TRAFALGAR)		89 SQ. M.
3	PART OF 16			73 SQ. M.
4		1	PART OF 24929-0081 (LT)	113 SQ. M.
5				136 SQ. M.
6	PART OF 15	2	PART OF 24929-0011 (LT)	321 SQ. M.

PARTS 1 & 2 COMPRISE PART OF PIN 24929-3358 (LT)
 PARTS 3, 4 & 5 COMPRISE PART OF PIN 24929-0081 (LT)
 PART 6 COMPRISE PART OF PIN 24929-0011 (LT)

PLAN OF SURVEY OF
 PART OF LOT 16, CONCESSION 1 NORTH OF DUNDAS STREET
 AND
 PART OF LOT 15, CONCESSION 2 NORTH OF DUNDAS STREET
 AND
 PART OF LOT 16, CONCESSION 2 NORTH OF DUNDAS STREET
 GEOGRAPHIC TOWNSHIP OF TRAFALGAR
 TOWN OF OAKVILLE
 REGIONAL MUNICIPALITY OF HALTON
 SCALE 1:1000

GRAPHIC SCALE

THE INTENDED PLOT SIZE OF THIS PLAN IS 610mm IN WIDTH BY 914mm IN HEIGHT AT A SCALE OF 1:1000

METRIC NOTE:
 DISTANCES AND COORDINATES SHOWN ON THIS PLAN ARE IN METRES AND CAN BE CONVERTED TO FEET BY DIVIDING BY 0.3048.

- LEGEND**
- DENOTES SURVEY MONUMENT FOUND
 - SURVEY MONUMENT SET
 - SSB STANDARD IRON BAR
 - SSB SHORT STANDARD IRON BAR
 - IB IRON BAR
 - IP IRON PIPE
 - WT WITNESS
 - 950 CUNNINGHAM MCCONNELL LIMITED
 - (N) NO IDENTIFICATION
 - PIN PROPERTY IDENTIFIER NUMBER
 - P1 PLAN 20R-21114
 - P2 PLAN 20R-7858
 - P3 PLAN 20R-20271
 - P4 PLAN 20R-1221
 - P5 PLAN 20R-20196
 - P6 PLAN 20R-11053
 - P7 PLAN 20R-21707
 - 626 H.D. SEWELL O.L.S.
 - 780 K.H. MCCONNELL O.L.S.
 - MMM MARSHAL MACKLIN MONAGHAN ONTARIO LIMITED O.L.S.
 - RPE R-PE SURVEYING LTD. O.L.S.

INTEGRATION DATA

BEARINGS ARE UTM GRID, DERIVED FROM OBSERVED REFERENCE POINTS (ORP'S) A AND B, UTM ZONE 17, NAD 83 (CSRS) 2010.

COORDINATES ARE UTM ZONE 17, NAD 83 (CSRS) 2010, TO URBAN ACCURACY PER SEC. 14 (2) OF OREG. 216/10, AND CANNOT, IN THEMSELVES, BE USED TO RE-ESTABLISH CORNERS OR BOUNDARIES SHOWN ON THIS PLAN.

ORP #	NORTHING	EASTING
A	4816566.76	600973.05
B	4815878.51	601693.26

DISTANCES ARE GROUND AND CAN BE CONVERTED TO GRID BY MULTIPLYING BY THE COMBINED SCALE FACTOR OF 0.99972541.

BEARING COMPARISON NOTE:
 BEARING COMPARISONS AS SHOWN ON P2 & P6 ARE ASTRONOMIC BEARINGS.

SURVEYOR'S CERTIFICATE

- I CERTIFY THAT:
- THIS SURVEY AND PLAN ARE CORRECT AND IN ACCORDANCE WITH THE SURVEYS ACT, THE SURVEYORS ACT AND THE LAND TITLES ACT AND THE REGULATIONS MADE UNDER THEM.
 - THE SURVEY WAS COMPLETED ON

DATE: _____

ROBERT D. MCCONNELL
 ONTARIO LAND SURVEYOR

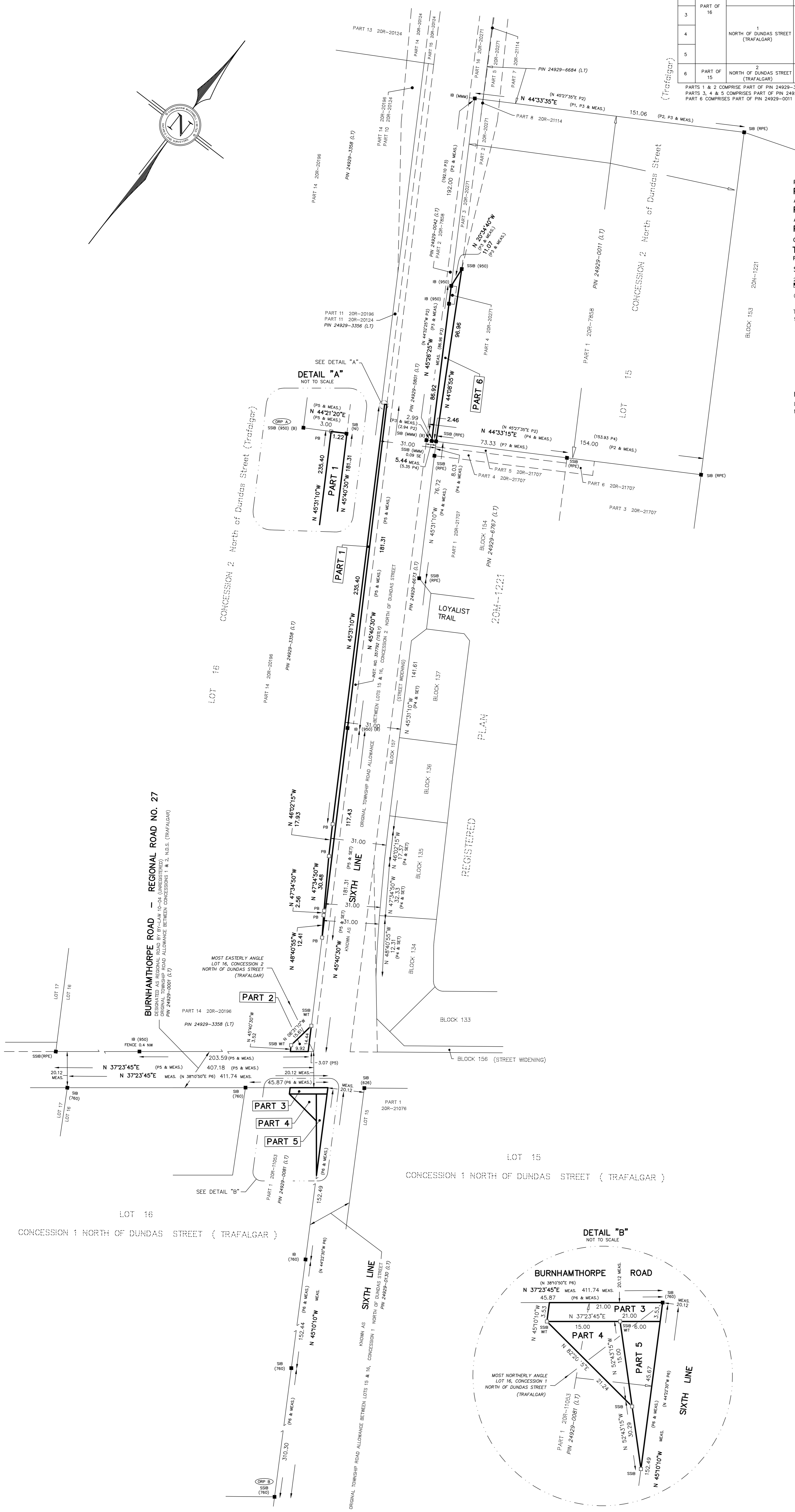
THIS PLAN OF SURVEY RELATES TO THE AOLS PLAN SUBMISSION FORM NUMBER

CUNNINGHAM MCCONNELL LIMITED
 ONTARIO LAND SURVEYORS

205 MAIN STREET MILTON, ONTARIO L9T 1N7
 PHONE (905) 878-6672
 EMAIL: milton.office@cmtsurveysors.ca

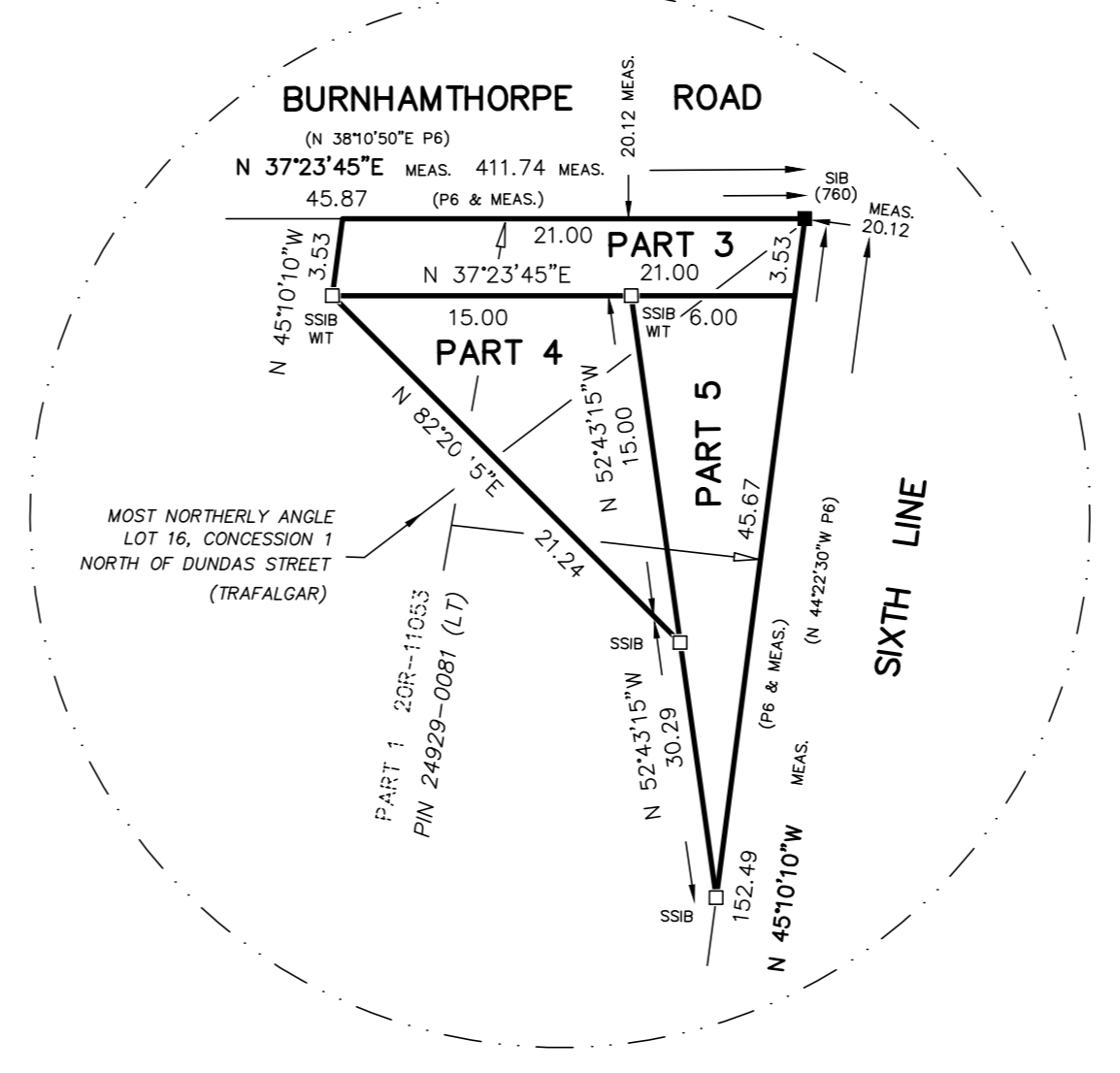
1200 SPEERS ROAD, UNIT 38 OAKVILLE, ONTARIO L6L 2X4
 PHONE (905) 845-3497
 EMAIL: info@ccmlsurveysors.ca

O.L.S. FILE # 28-20C



SEE DETAIL "A"
 NOT TO SCALE

DETAIL "B"
 NOT TO SCALE



BURNHAMTHORPE ROAD - REGIONAL ROAD NO. 27
 DESIGNATED AS REGIONAL ROAD BY R.F. LAW 10-04 (UNREGULATED)
 ORIGINAL TOWNSHIP ROAD ALLOWANCE BETWEEN CONCESSIONS 1 & 2, N.D.S. (TRAFALGAR)
 PIN 24929-0081 (LT)

MOST EASTERLY ANGLE
 LOT 16, CONCESSION 2
 NORTH OF DUNDAS STREET
 (TRAFALGAR)

REGISTERED

PLAN