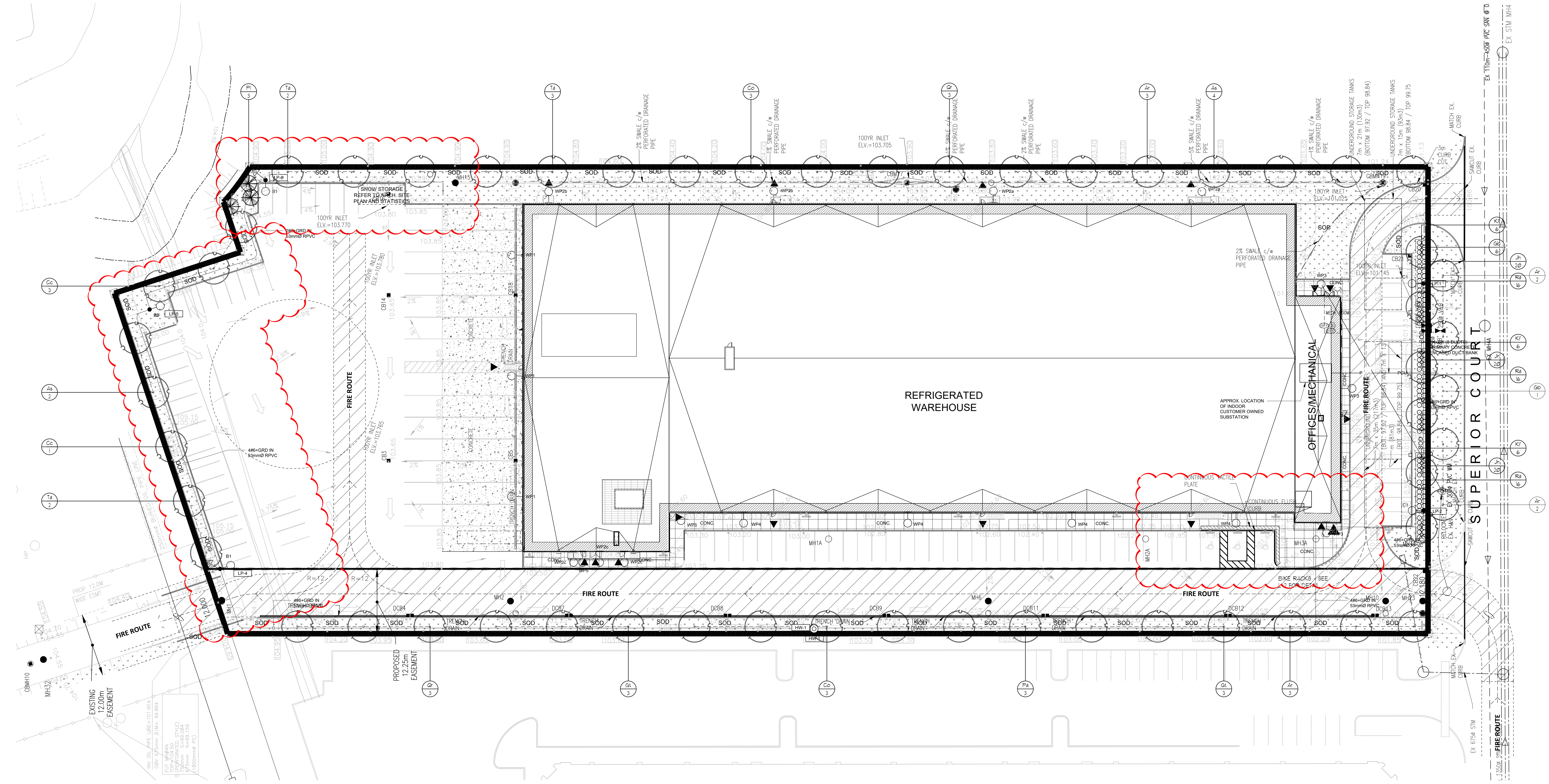


### LEGEND

- PROPOSED DECIDUOUS TREES
- PROPOSED CONIFEROUS TREES
- PROPOSED PLANTINGS
- PLANT KEYS - SEE PLANT MATERIALS LIST
- SOD - SEE NOTES
- PROPOSED BIKE RACK - SEE DETAIL
- PROPOSED LIGHTING - SEE ELECTRICAL PLAN



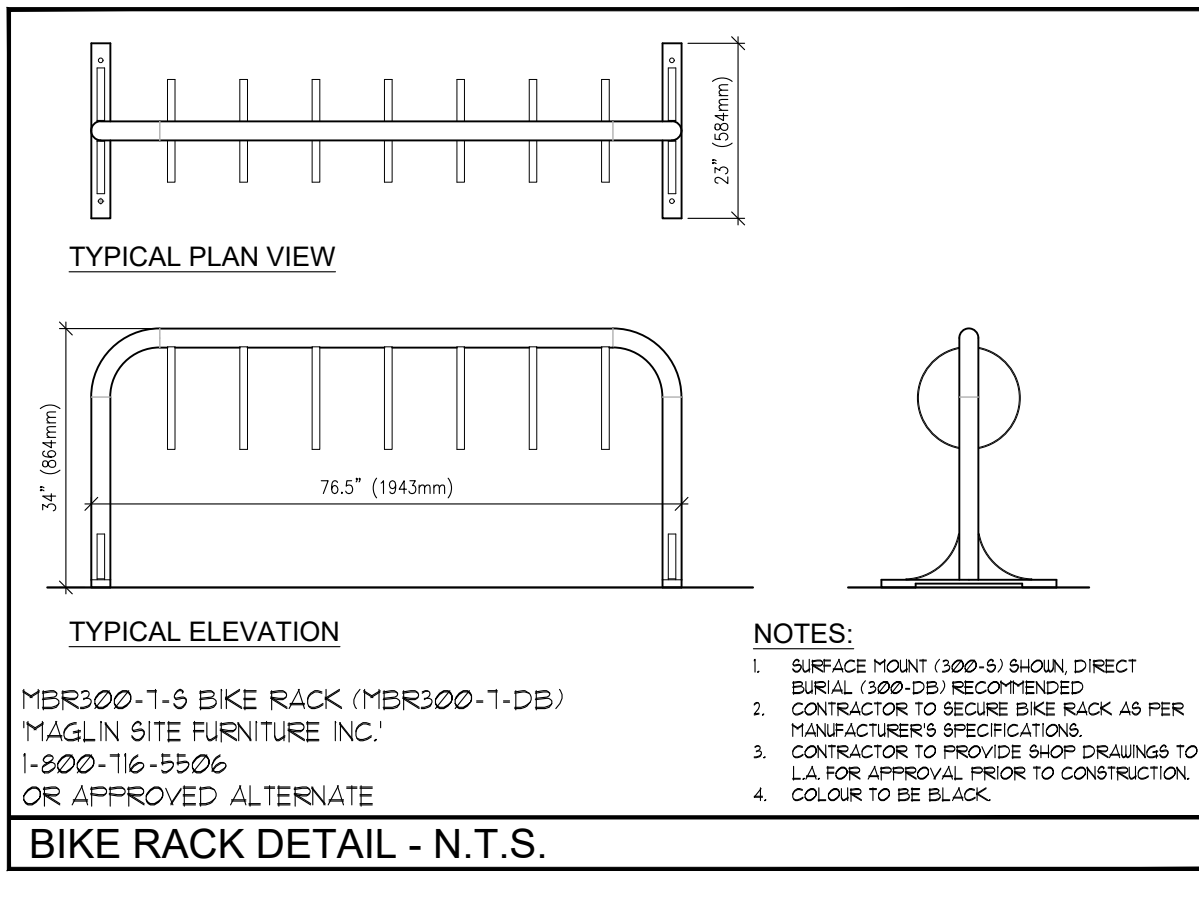
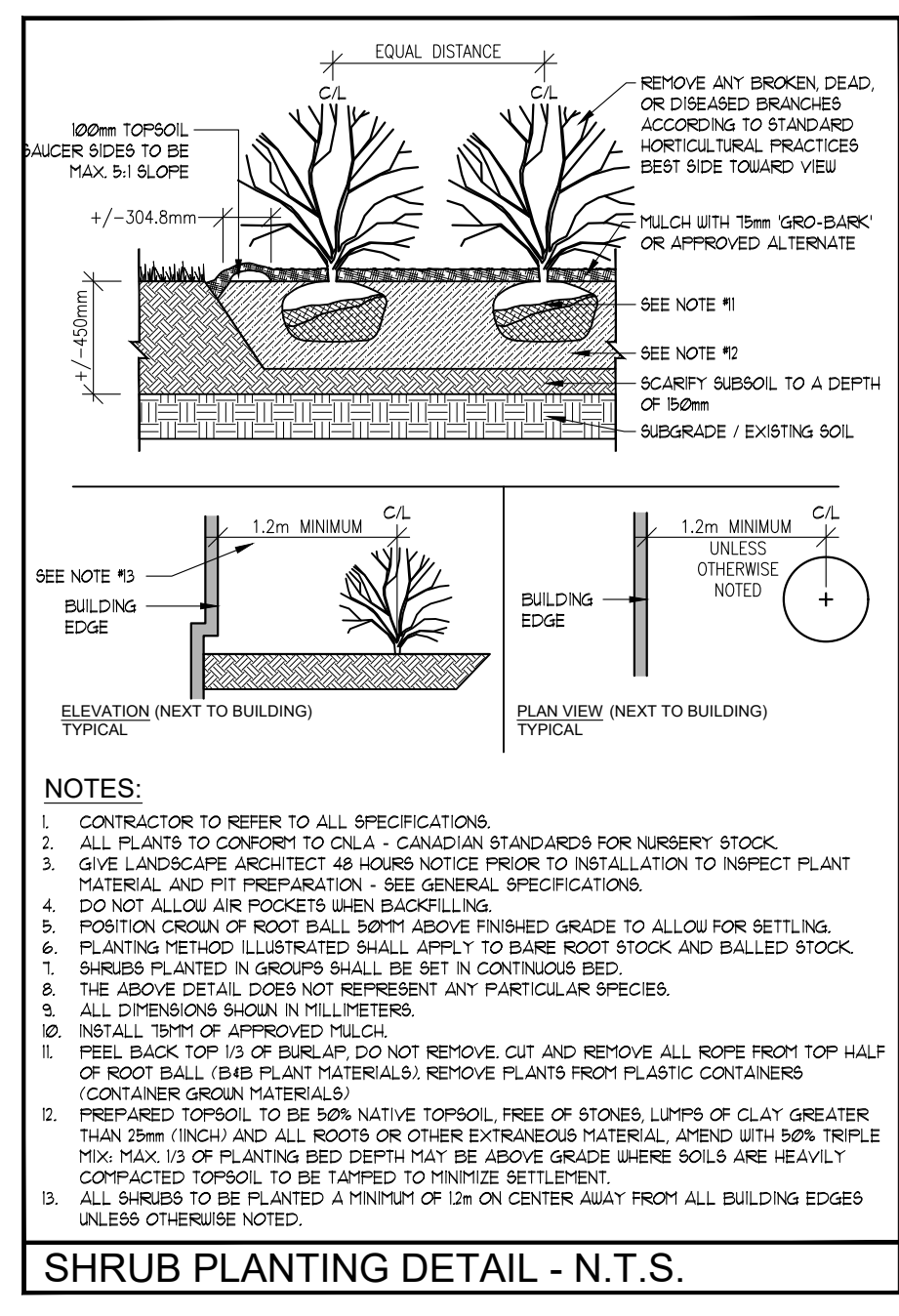
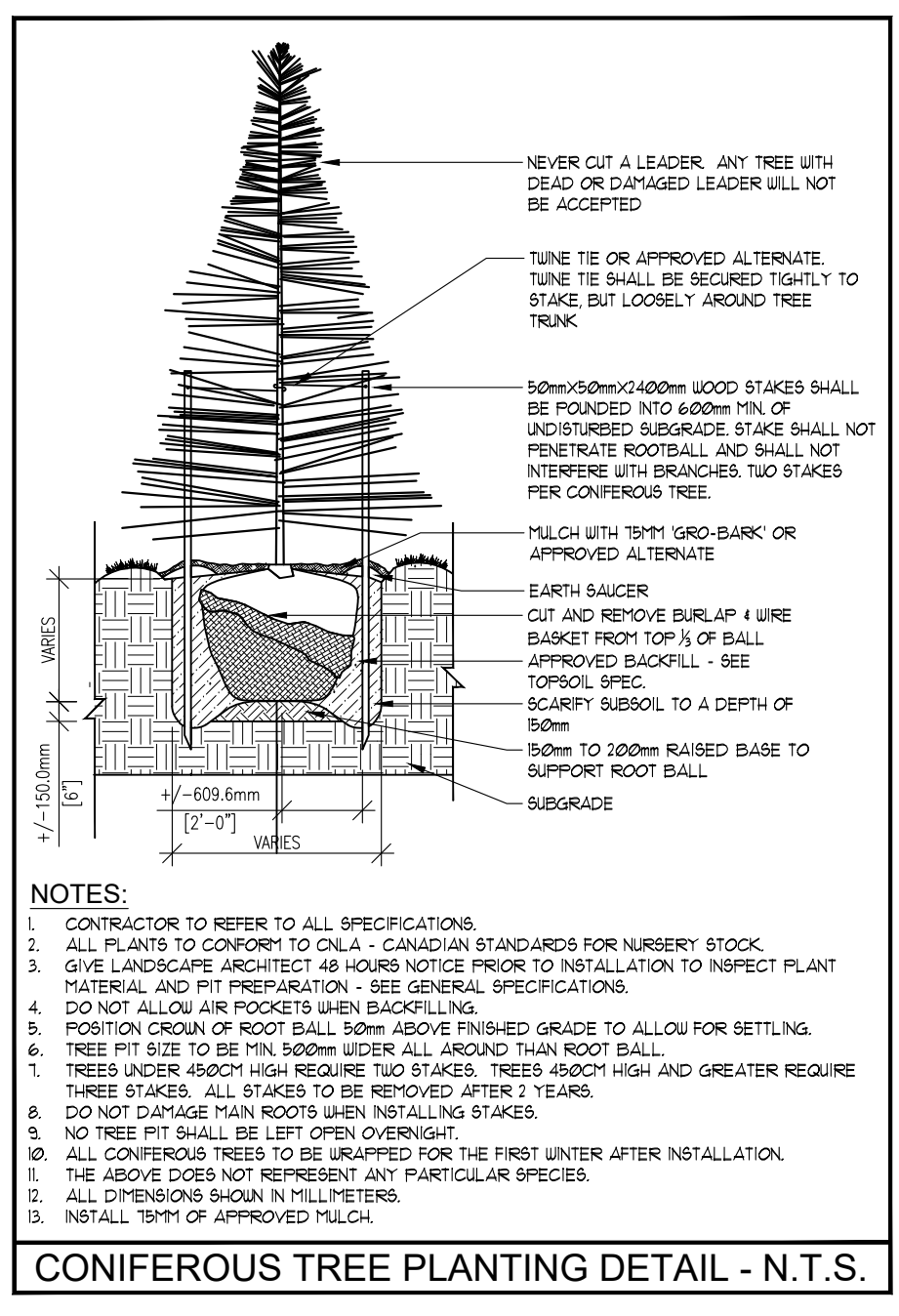
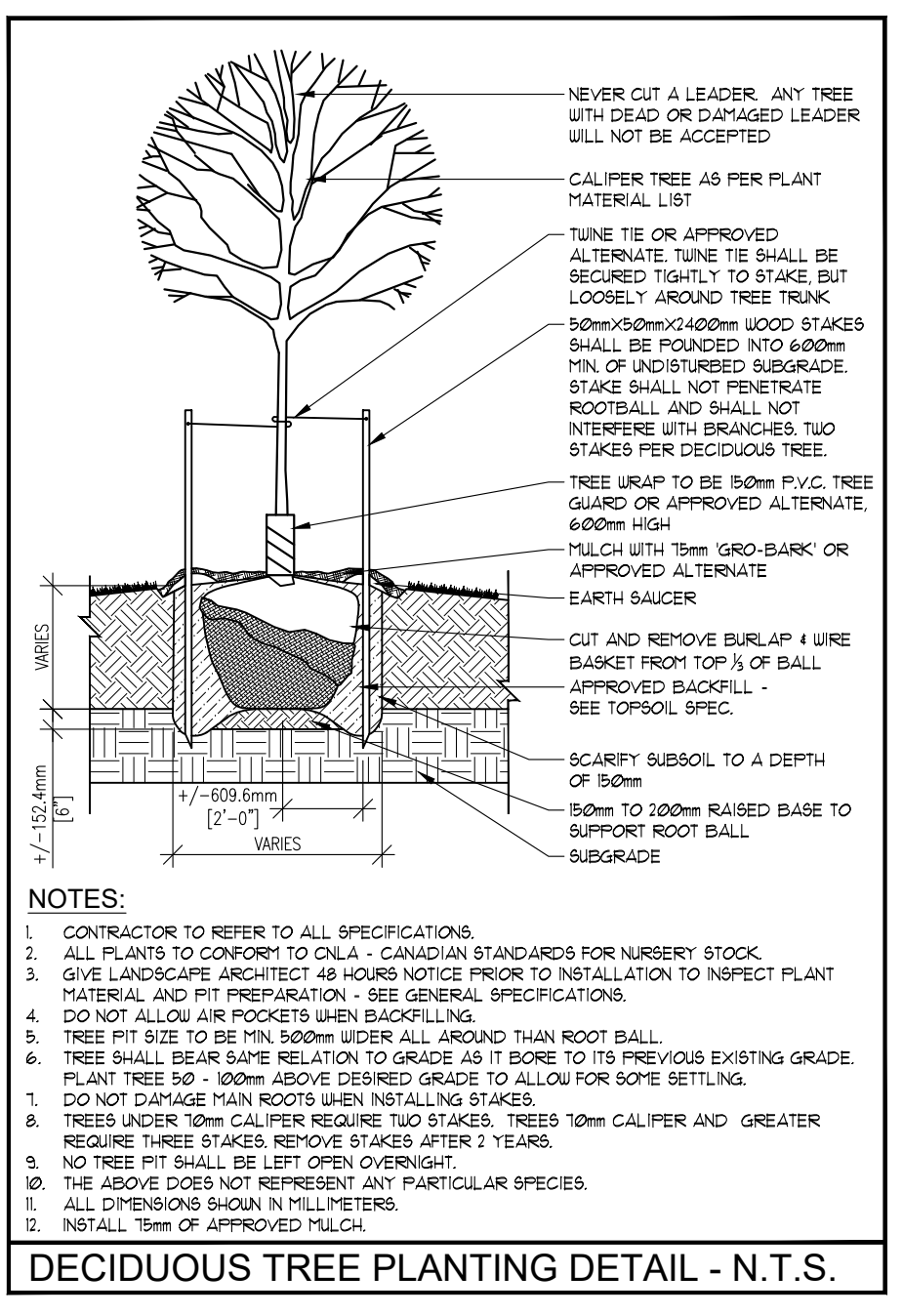
### LANDSCAPE PLAN

SCALE = 1:300



KEY	COMMON NAME	BOTANICAL NAME	QTY	SIZE	COND.
A	RED MAPLE	Acer rubrum 'Sures'	6	40cm x 1.8m	UB
B	BALCONY MAPLE	Acer saccharum	6	40cm x 1.8m	UB
C	SINGLE-STEM REDBUD	Cercis canadensis single-stem	6	40cm x 1.8m	POT
D	HEDGEHOG TREE	Castanea coccinea	6	40cm x 1.8m	UB
G	MADRID PALM TREE	Chamaelirium luteum	6	40cm x 1.8m	UB
H	BAUCONIA LOGIST	Baucoum logist	6	40cm x 1.8m	UB
J	PRINCE OF WALES JASMINE	Opuntia spectabilis	6	40cm x 1.8m	POT
K	KARL FORESTER REED GRASS	Phalaris amabilis	8	20cm x 1.8m	POT
L	BLOSSOMING LONDON PLANETREE	Platanus acerifolia 'Blossomiflora'	3	40cm x 1.8m	UB
M	LAUREL SPRUCE	Prunella lauro-coccinea	1	40cm x 1.8m	UB
N	RED OAK	Quercus rubra	4	40cm x 1.8m	UB
O	ALPINE GARLAND	Rosa alpinum	4	40cm x 1.8m	POT
T	BASSWOOD	Tilia americana	1	40cm x 1.8m	UB

KEY	COMMON NAME	BOTANICAL NAME	QTY	SIZE	COND.
A	RED MAPLE	Acer rubrum 'Sures'	4	40cm x 1.8m	UB
B	MADRID PALM TREE	Chamaelirium luteum	1	40cm x 1.8m	UB



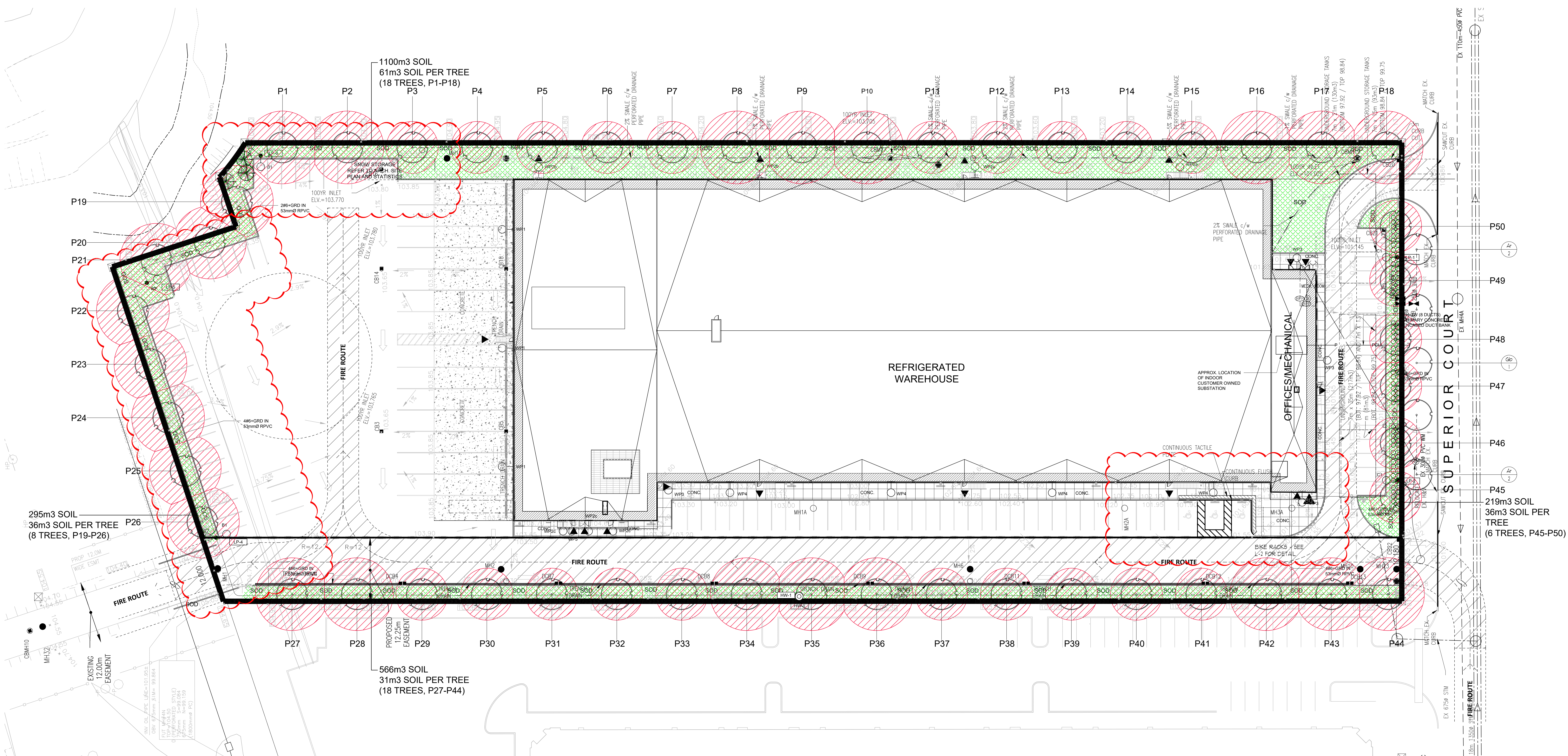
### GENERAL PLANTING SPECIFICATIONS:

1. BASE INFORMATION SHOWN BY COLOR BULLETS.
2. ENGINEERING INFORMATION SHOWN BY BROWN BULLETS.
3. CONTRACTOR TO VERIFY ALL PLANT MATERIAL LISTED IN THIS PLAN.
4. CONTRACTOR TO VERIFY ALL PLANT MATERIAL LISTED IN THIS PLAN.
5. CONTRACTOR TO VERIFY ALL PLANT MATERIAL LISTED IN THIS PLAN.
6. CONTRACTOR TO VERIFY ALL PLANT MATERIAL LISTED IN THIS PLAN.
7. CONTRACTOR TO VERIFY ALL PLANT MATERIAL LISTED IN THIS PLAN.
8. CONTRACTOR TO VERIFY ALL PLANT MATERIAL LISTED IN THIS PLAN.
9. CONTRACTOR TO VERIFY ALL PLANT MATERIAL LISTED IN THIS PLAN.
10. CONTRACTOR TO VERIFY ALL PLANT MATERIAL LISTED IN THIS PLAN.

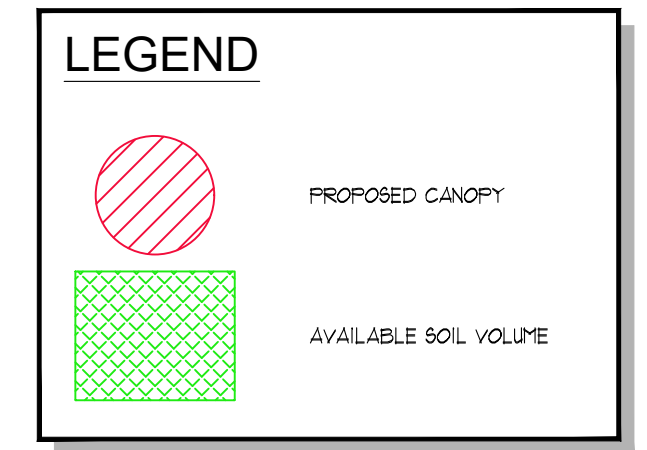
NO.	DATE	REVISION	BY
1	MAR. 14, 2022	ISSUED FOR SPA	NCR
2	OCT. 10, 2021	ISSUED FOR SPA	NCR
3	NOV. 24, 2022	ISSUED FOR SPA	NCR
4	AUG. 18, 2021	ISSUED FOR SPA	NCR
5	JUN. 28, 2021	ISSUED FOR SPA	NCR



**ACS SUPERIOR GRF**  
 SUPERIOR COURT, OAKVILLE, ONTARIO



**CANOPY COVER PLAN**  
SCALE = 1:300



CANOPY COVER CALCULATION											
FILE NUMBER:				FILE NAME:							
TREE #	SPECIES	STATURE (CM)	SOIL VOLUME/TREE (CUBIC METERS)	CANOPY AREA (SQUARE METERS)	CANOPY AREA SUBTOTAL (SQUARE METERS)	TREE #	SPECIES	STATURE (CM)	SOIL VOLUME/TREE (CUBIC METERS)	CANOPY AREA (SQUARE METERS)	CANOPY AREA SUBTOTAL (SQUARE METERS)
<b>PROPOSED CANOPY ON SITE</b>											
P1	Acer rubrum Red Sunser	L	61	150	5489	P27	Acer rubrum Red Sunser	L	31	50	5489
P2	Acer rubrum Red Sunser	L	61	150		P28	Acer rubrum Red Sunser	L	31	50	
P3	Gleditsia haccarifolia var. inermis 'Shademoor'	M	61	78		P29	Gleditsia haccarifolia var. inermis 'Shademoor'	M	31	78	
P4	Gleditsia haccarifolia var. inermis 'Shademoor'	M	61	78		P30	Gleditsia haccarifolia var. inermis 'Shademoor'	M	31	78	
P5	Gleditsia haccarifolia var. inermis 'Shademoor'	M	61	78		P31	Gleditsia haccarifolia var. inermis 'Shademoor'	M	31	78	
P6	Gleditsia haccarifolia var. inermis 'Shademoor'	M	61	78		P32	Gleditsia haccarifolia var. inermis 'Shademoor'	M	31	78	
P7	Gleditsia haccarifolia var. inermis 'Shademoor'	M	61	78		P33	Gleditsia haccarifolia var. inermis 'Shademoor'	M	31	78	
P8	Acer rubrum Red Sunser	L	61	150		P34	Acer rubrum Red Sunser	L	31	150	
P9	Acer rubrum Red Sunser	L	61	150		P35	Acer rubrum Red Sunser	L	31	150	
P10	Acer rubrum Red Sunser	L	61	150		P36	Acer rubrum Red Sunser	L	31	150	
P11	Gleditsia haccarifolia var. inermis 'Shademoor'	M	61	78		P37	Gleditsia haccarifolia var. inermis 'Shademoor'	M	31	78	
P12	Gleditsia haccarifolia var. inermis 'Shademoor'	M	61	78		P38	Gleditsia haccarifolia var. inermis 'Shademoor'	M	31	78	
P13	Gleditsia haccarifolia var. inermis 'Shademoor'	M	61	78		P39	Gleditsia haccarifolia var. inermis 'Shademoor'	M	31	78	
P14	Gleditsia haccarifolia var. inermis 'Shademoor'	M	61	78		P40	Gleditsia haccarifolia var. inermis 'Shademoor'	M	31	78	
P15	Acer rubrum Red Sunser	L	61	150		P41	Acer rubrum Red Sunser	L	31	150	
P16	Acer rubrum Red Sunser	L	61	150		P42	Acer rubrum Red Sunser	L	31	150	
P17	Gleditsia haccarifolia var. inermis 'Shademoor'	M	61	78		P43	Gleditsia haccarifolia var. inermis 'Shademoor'	M	31	78	
P18	Gleditsia haccarifolia var. inermis 'Shademoor'	M	61	78		P44	Gleditsia haccarifolia var. inermis 'Shademoor'	M	31	78	
P19	Acer rubrum Red Sunser	L	61	150	P45	Acer rubrum Red Sunser	L	31	150		
P20	Celtis occidentalis	L	36	135	P46	Acer rubrum Red Sunser	L	31	150		
P21	Celtis occidentalis	L	36	127	P47	Acer rubrum Red Sunser	L	31	150		
P22	Celtis occidentalis	L	36	134	P48	Ginkgo biloba	M	36	77		
P23	Thuja americana	L	36	134	P49	Ginkgo biloba	M	36	77		
P24	Celtis occidentalis	L	36	134	P50	Ginkgo biloba	M	36	77		
P25	Thuja americana	L	36	134							
P26	Thuja americana	L	36	137							
						<b>SUB TOTAL OF PROPOSED CANOPY ON SITE 5489</b>					
<b>EXISTING CANOPY ON SITE - NONE</b>											
<b>EXISTING CANOPY OVERHANGING SITE - NONE</b>											
<b>CANOPY SUMMARY</b>											
Total Site Area (square meters)										20141	
Site Canopy Cover										20%	
Canopy Cover Target by Land Use										22%	
<b>PARKING AREA SUMMARY</b>											
Total Parking Spaces Proposed										51	
Total # of trees or within 5m of parking Area										15	

No.	Date	Revision	By
5.	MAR.14.2022	RE ISSUED FOR SPA	NCB
4.	DEC.10.2021	RE ISSUED FOR SPA	NCB
3.	NOV.28.2021	RE ISSUED FOR SPA	NCB
2.	AUG.18.2021	ISSUED FOR SPA	NCB
1.	JUN.28.2021	ISSUED FOR SPA	NCB



**ACS SUPERIOR GRF**  
SUPERIOR COURT, OAKVILLE, ONTARIO