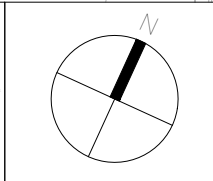


NOTES:
 AS PER THE ONTARIO BUILDING CODE 3.2.5

1. 5.1 LOCATION OF ACCESS ROUTES – ACCESS ROUTES SHALL BE LOCATED SO THAT THE PRINCIPAL ENTRANCE AND EVERY ACCESS OPENING ARE LOCATED NOT LESS THAN 3m AND NOT MORE THAN 15m FROM THE CLOSEST PORTION OF THE ACCESS ROUTE
2. 6.1 ACCESS ROUTE DESIGN – A PORTION OF A ROADWAY PROVIDED AS A REQUIRED ACCESS ROUTE FOR FIRE DEPARTMENT USE SHALL:
 - (i) 6.1.a HAVE A CLEAR WIDTH NOT LESS THAN 6m,
 - (ii) 6.1.b HAVE A CENTRELINE RADIUS NOT LESS THAN 12m
 - (iii) 6.1.c HAVE AN OH CLEARANCE OF NOT LESS THAN 5m
 - (iv) 6.1.g BE CONNECTED WITH A PUBLIC THOROUGHFARE

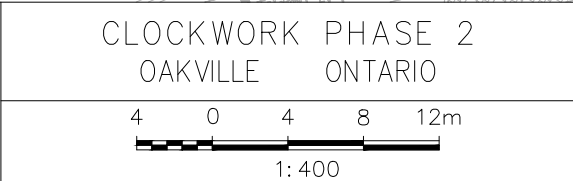
DRAWN BY: A.A. PLOT DATE: January 16, 2024

LEA Consulting Ltd.
 Consulting Engineers and Planners
 www.LEA.ca

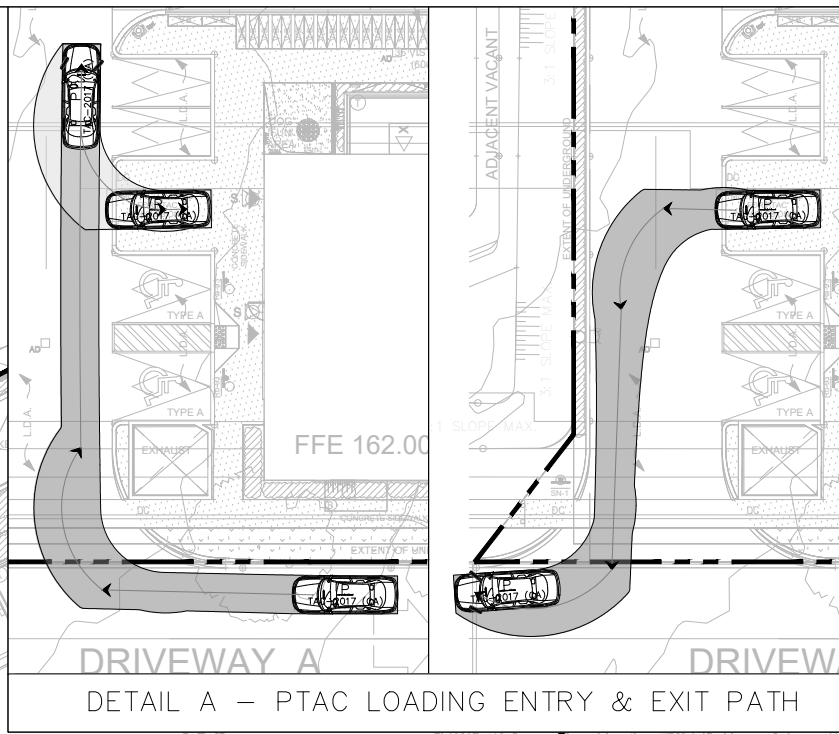
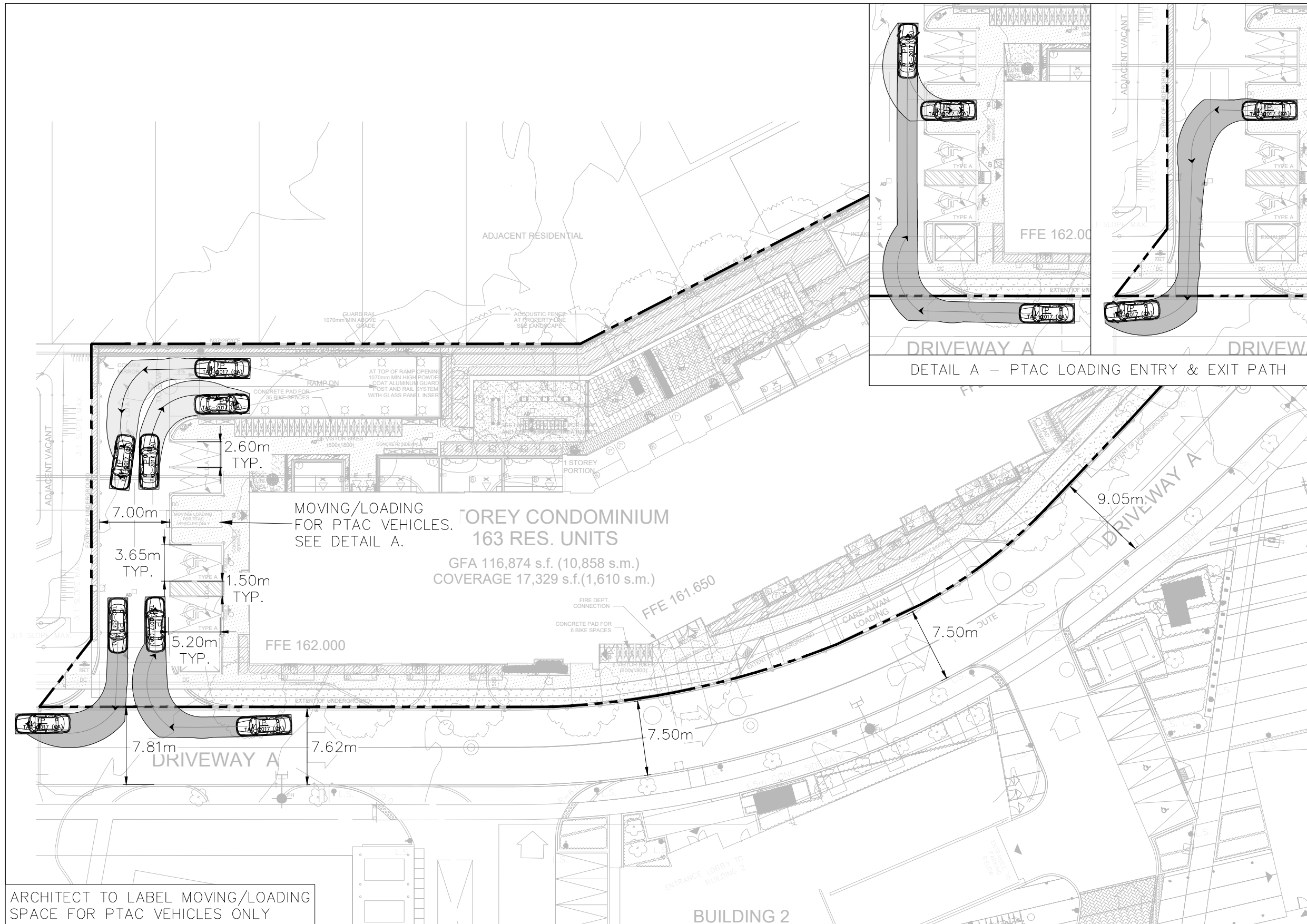
Project No.
 23308
 Date
 JAN 16, 2024

CLOCKWORK PHASE 2
 OAKVILLE ONTARIO



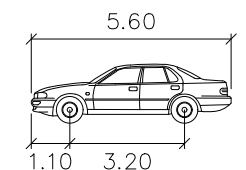
GROUND FLOOR
 FIRE ROUTE REVIEW

Drawing No.
 001



- NOTES:
- NORTH OAKVILLE ZONING BY-LAW 2009-189 (5.4.1.3):
1. THE MINIMUM PARKING SPACE SIZE SHALL BE A WIDTH OF 2.6 m; AND A LENGTH OF 5.2 m.
 2. OBSTRUCTIONS WITHIN 1.15 m OF EITHER STALL END AND NOT GREATER THAN 0.3 m IN WIDTH ARE PERMITTED.
 3. PARKING SPACES SHALL BE ACCESSED WITH A MINIMUM PARKING AISLE WIDTH OF 7 m FOR 90 DEGREE ANGLE PARKING.

- NORTH OAKVILLE ZONING BY-LAW 2009-189 (5.2):
4. AN ACCESSIBLE PARKING SPACE MUST HAVE THE FOLLOWING MINIMUM DIMENSIONS:
- TYPE A:
- (i)a) LENGTH OF 5.2 m;
 - (ii) WIDTH OF 3.65 m; AND
 - (iii) BARRIER-FREE PATH OF 1.5 m IN WIDTH.
- TYPE B:
- (i)b) LENGTH OF 5.2 m;
 - (ii) WIDTH OF 2.7 m; AND
 - (iii) BARRIER-FREE PATH OF 1.5 m IN WIDTH.

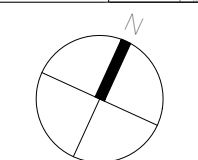


	metres
Width	: 2.00
Track	: 2.00
Lock to Lock Time	: 6.0
Steering Angle	: 35.9

DRAWN BY: A.A. PLOT DATE: January 16, 2024

ARCHITECT TO LABEL MOVING/LOADING SPACE FOR PTAC VEHICLES ONLY

LEA Consulting Ltd.
 Consulting Engineers and Planners
 www.LEA.ca



Project No.
23308

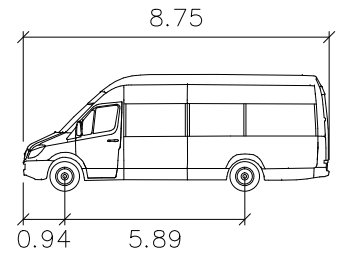
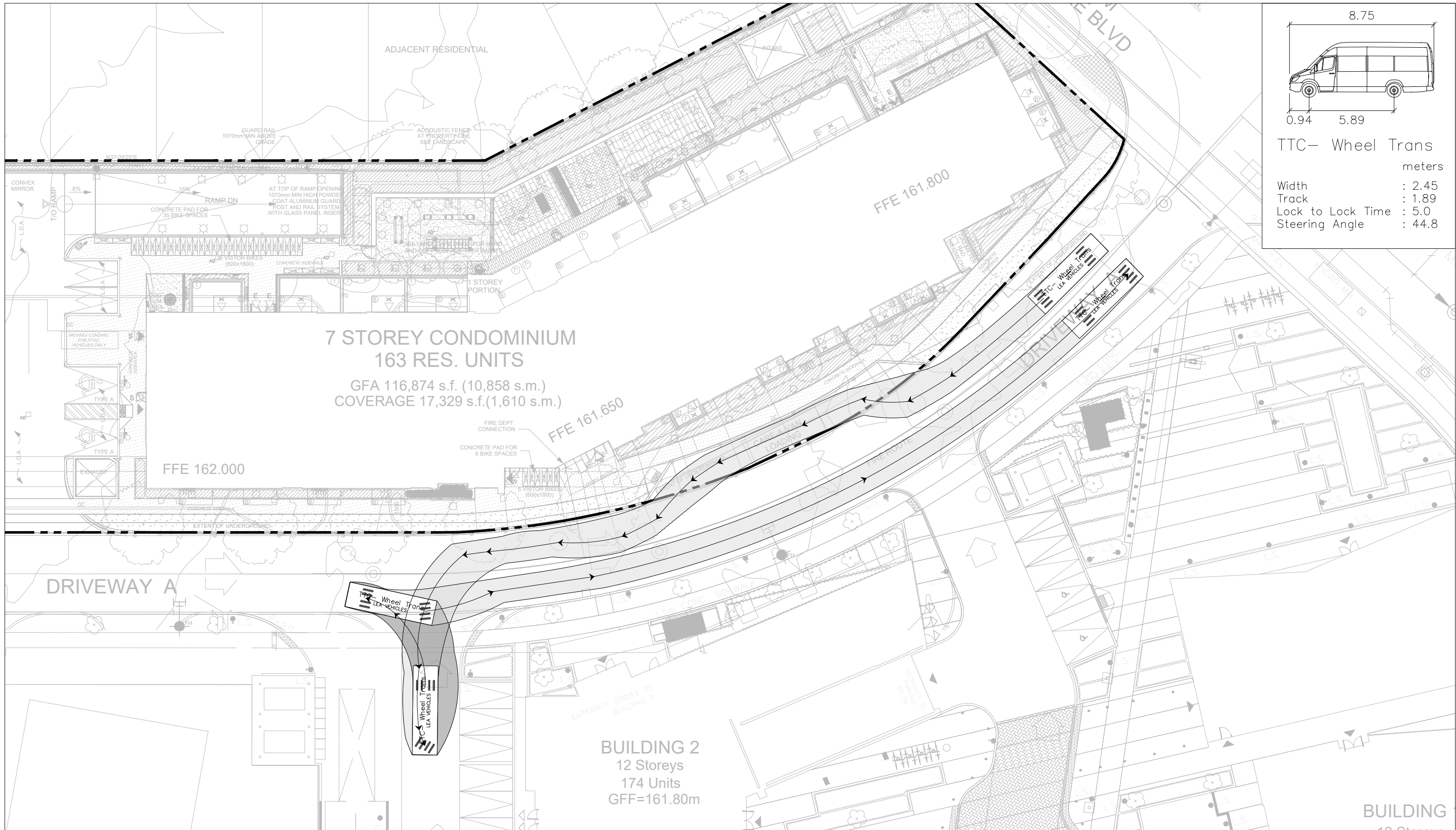
Date
JAN 16, 2024

CLOCKWORK PHASE 2
 OAKVILLE ONTARIO

1: 400

GROUND FLOOR
 PARKING AND LOADING REVIEW

Drawing No.
002



TTC- Wheel Trans

	units	metres
Width	: 2.45	
Track	: 1.89	
Lock to Lock Time	: 5.0	
Steering Angle	: 44.8	

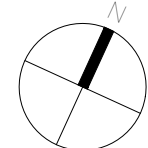
7 STOREY CONDOMINIUM
163 RES. UNITS

GFA 116,874 s.f. (10,858 s.m.)
COVERAGE 17,329 s.f. (1,610 s.m.)

BUILDING 2
12 Storeys
174 Units
GFF=161.80m

DRAWN BY: X.C. PLOT DATE: January 16, 2024

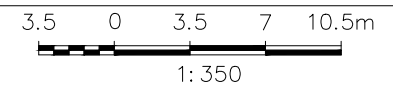
LEA Consulting Ltd.
Consulting Engineers
and Planners
www.LEA.ca



Project No.
23308

Date
JAN 16, 2024

CLOCKWORK PHASE 2
OAKVILLE ONTARIO

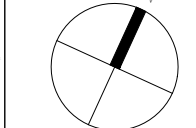


GROUND FLOOR
CARE-A-VAN
ENTRY & EXIT PATH

Drawing No.
003

DRAWN BY: A.A. PLOT DATE: January 16, 2024

LEA Consulting Ltd.
Consulting Engineers
and Planners
www.LEA.ca



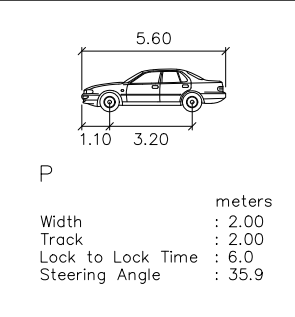
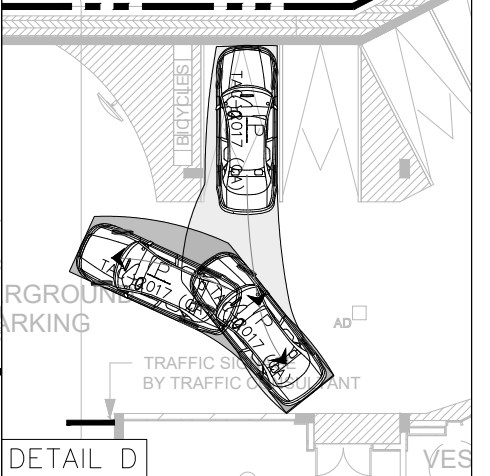
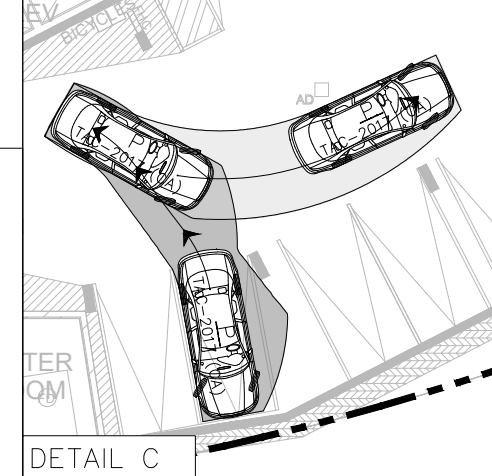
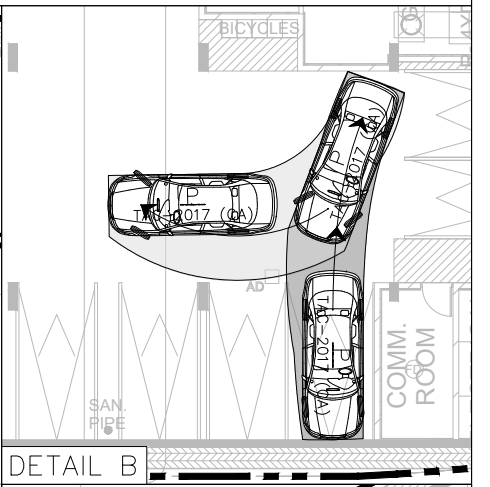
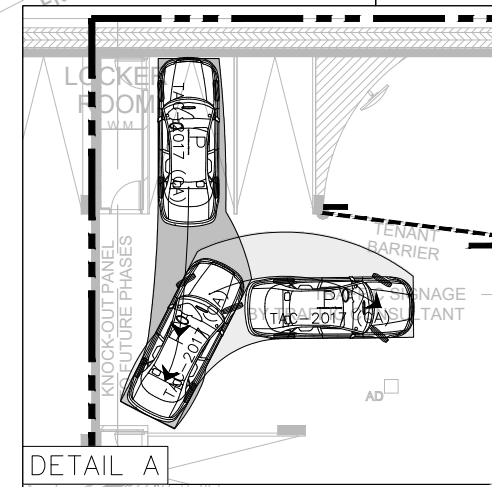
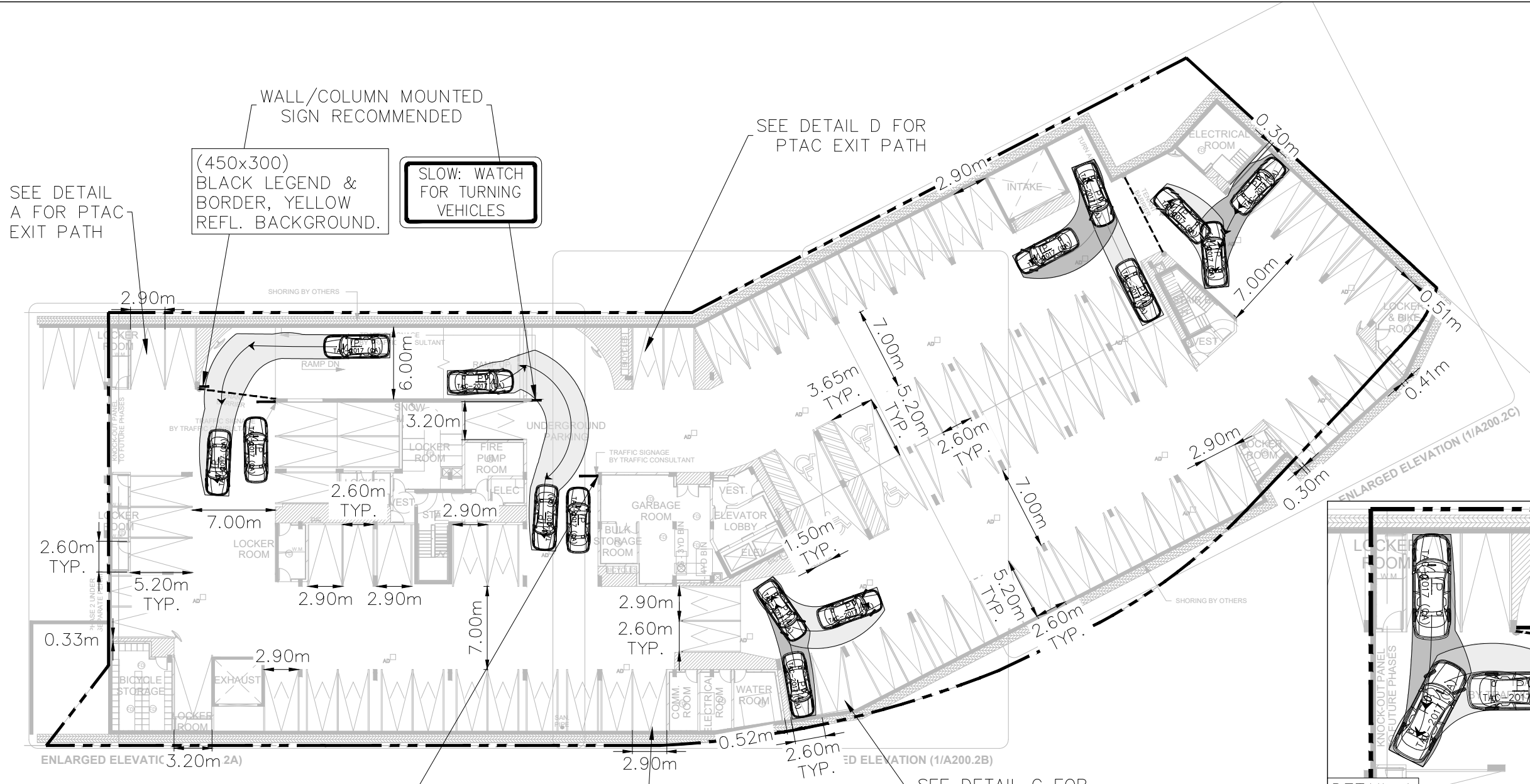
Project No.
23308
Date
JAN 16, 2024

CLOCKWORK PHASE 2
OAKVILLE ONTARIO
4 0 4 8 12m
1: 400

PARKING REVIEW – LEVEL P1
PASSENGER VEHICLE (PTAC)

Drawing No.
004

NOTES:
NORTH OAKVILLE ZONING BY-LAW 2009-189 (5.4.1.3):
1. THE MINIMUM PARKING SPACE SIZE SHALL BE A WIDTH OF 2.6 m; AND A LENGTH OF 5.2 m.
2. OBSTRUCTIONS WITHIN 1.15 m OF EITHER STALL END AND NOT GREATER THAN 0.3 m IN WIDTH ARE PERMITTED.
3. PARKING SPACES SHALL BE ACCESSED WITH A MINIMUM PARKING AISLE WIDTH OF 7 m FOR 90 DEGREE ANGLE PARKING.
NORTH OAKVILLE ZONING BY-LAW 2009-189 (5.2):
4. AN ACCESSIBLE PARKING SPACE MUST HAVE THE FOLLOWING MINIMUM DIMENSIONS:
TYPE A:
(i)a) LENGTH OF 5.2 m;
(ii)WIDTH OF 3.65 m; AND
(iii)BARRIER-FREE PATH OF 1.5 m IN WIDTH.
TYPE B:
(i)b) LENGTH OF 5.2 m;
(ii)WIDTH OF 2.7 m; AND
(iii)BARRIER-FREE PATH OF 1.5 m IN WIDTH.



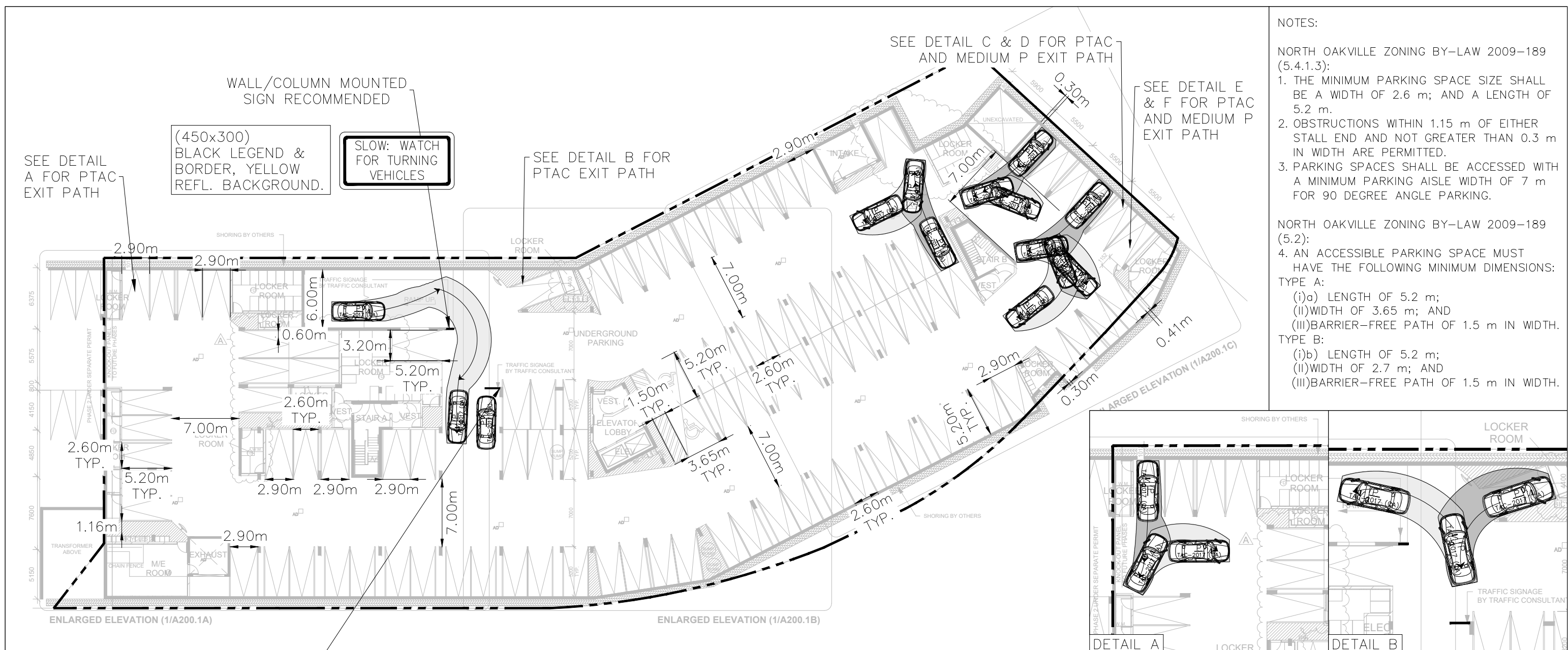
SEE DETAIL A FOR PTAC EXIT PATH
WALL/COLUMN MOUNTED SIGN RECOMMENDED
(450x300) BLACK LEGEND & BORDER, YELLOW REFL. BACKGROUND.
SLOW: WATCH FOR TURNING VEHICLES

SEE DETAIL D FOR PTAC EXIT PATH

WALL/COLUMN-MOUNTED SIGN RECOMMENDED SINCE SIMULTANEOUS P-TAC MANEUVERS CANNOT BE ACCOMMODATED (TYP.)
(450x300) BLACK LEGEND & BORDER, YELLOW REFL. BACKGROUND.
YIELD TO ONCOMING TRAFFIC

SEE DETAIL B FOR PTAC EXIT PATH

SEE DETAIL C FOR PTAC EXIT PATH



NOTES:

NORTH OAKVILLE ZONING BY-LAW 2009-189 (5.4.1.3):

1. THE MINIMUM PARKING SPACE SIZE SHALL BE A WIDTH OF 2.6 m; AND A LENGTH OF 5.2 m.
2. OBSTRUCTIONS WITHIN 1.15 m OF EITHER STALL END AND NOT GREATER THAN 0.3 m IN WIDTH ARE PERMITTED.
3. PARKING SPACES SHALL BE ACCESSED WITH A MINIMUM PARKING AISLE WIDTH OF 7 m FOR 90 DEGREE ANGLE PARKING.

NORTH OAKVILLE ZONING BY-LAW 2009-189 (5.2):

4. AN ACCESSIBLE PARKING SPACE MUST HAVE THE FOLLOWING MINIMUM DIMENSIONS:

TYPE A:

- (i)a) LENGTH OF 5.2 m;
- (ii) WIDTH OF 3.65 m; AND
- (iii) BARRIER-FREE PATH OF 1.5 m IN WIDTH.

TYPE B:

- (i)b) LENGTH OF 5.2 m;
- (ii) WIDTH OF 2.7 m; AND
- (iii) BARRIER-FREE PATH OF 1.5 m IN WIDTH.

SEE DETAIL A FOR PTAC EXIT PATH

WALL/COLUMN MOUNTED SIGN RECOMMENDED

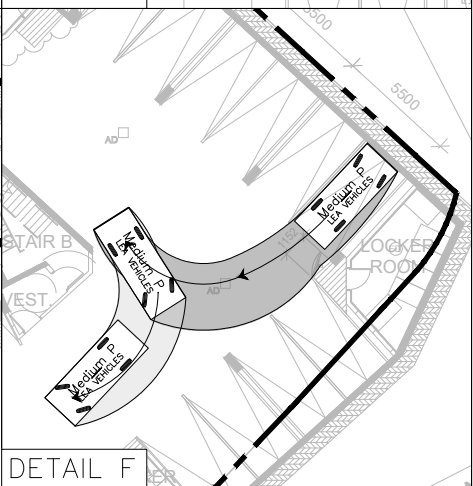
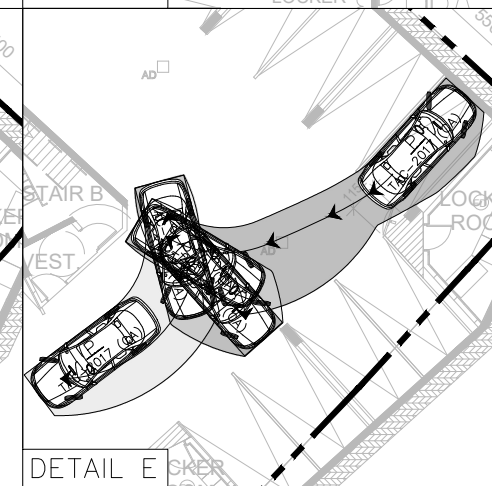
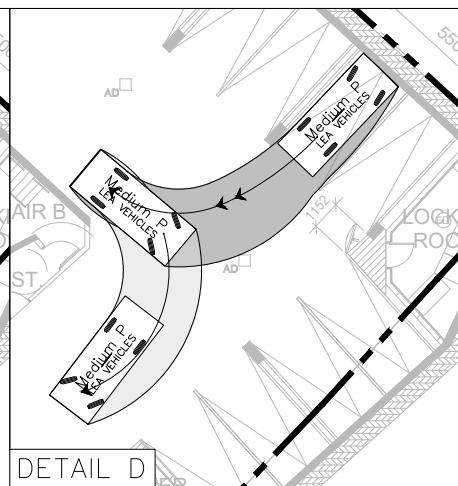
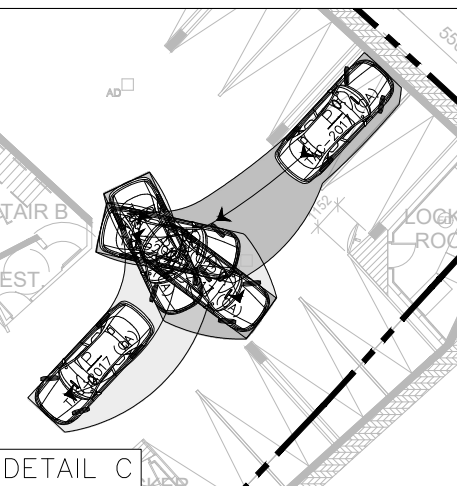
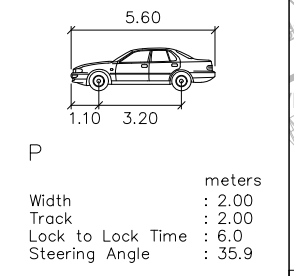
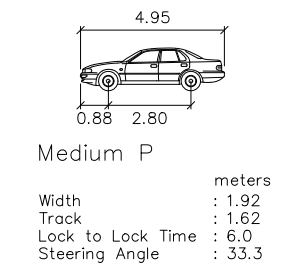
(450x300) BLACK LEGEND & BORDER, YELLOW REFL. BACKGROUND.

SLOW: WATCH FOR TURNING VEHICLES

WALL/COLUMN-MOUNTED SIGN RECOMMENDED SINCE SIMULTANEOUS P-TAC MANEUVERS CANNOT BE ACCOMMODATED (TYP.)

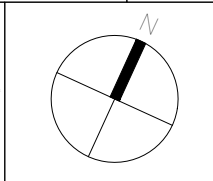
(450x300) BLACK LEGEND & BORDER, YELLOW REFL. BACKGROUND.

YIELD TO ONCOMING TRAFFIC



DRAWN BY: A.A. PLOT DATE: January 16, 2024

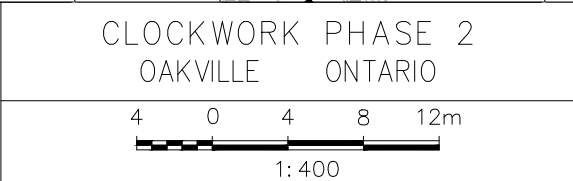
LEA Consulting Ltd.
Consulting Engineers and Planners
www.LEA.ca



Project No.
23308

Date
JAN 16, 2024

CLOCKWORK PHASE 2
OAKVILLE ONTARIO



PARKING REVIEW – LEVEL P2
PASSENGER VEHICLE (PTAC) &
MEDIUM P

Drawing No.
005