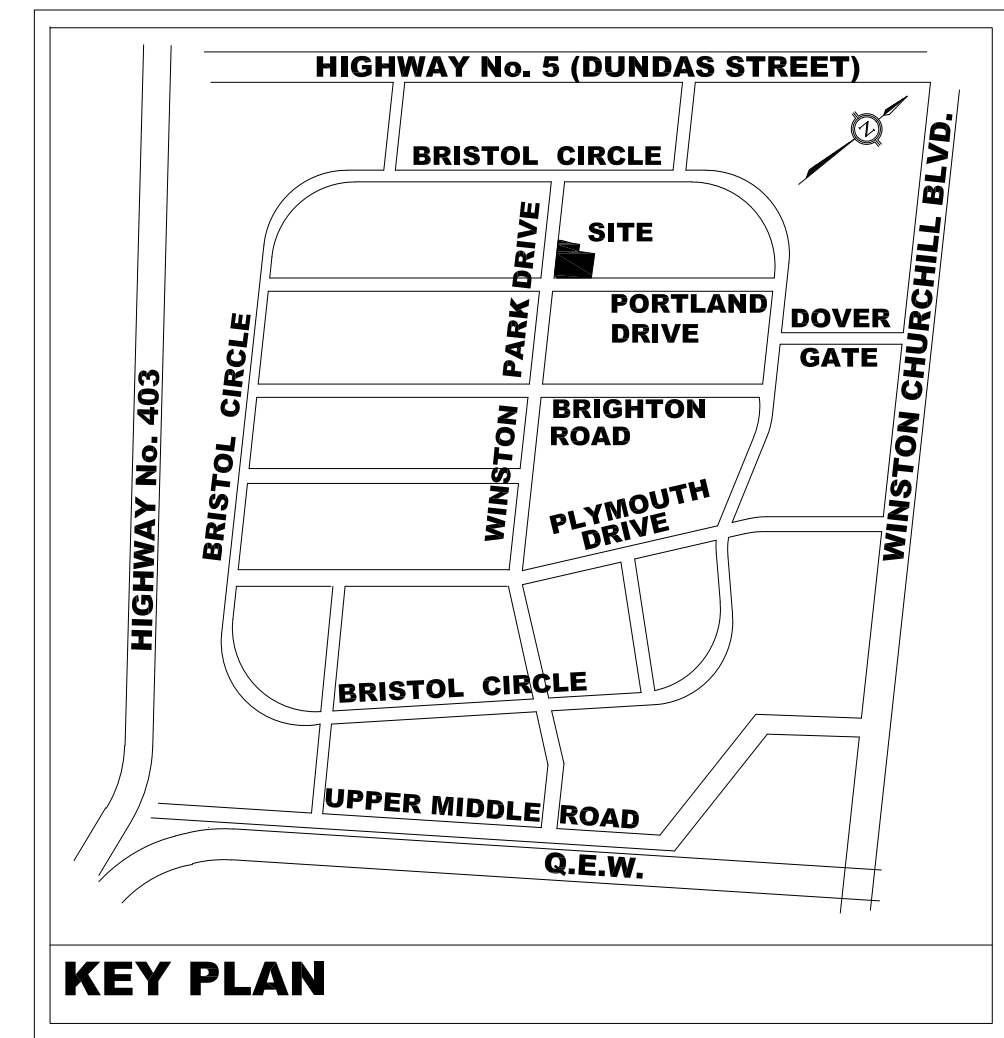


LEGEND
ALL ITEMS ARE TO BE PROVIDED UNLESS OTHERWISE NOTED

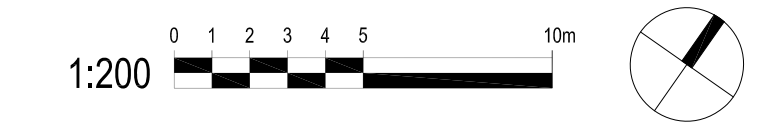
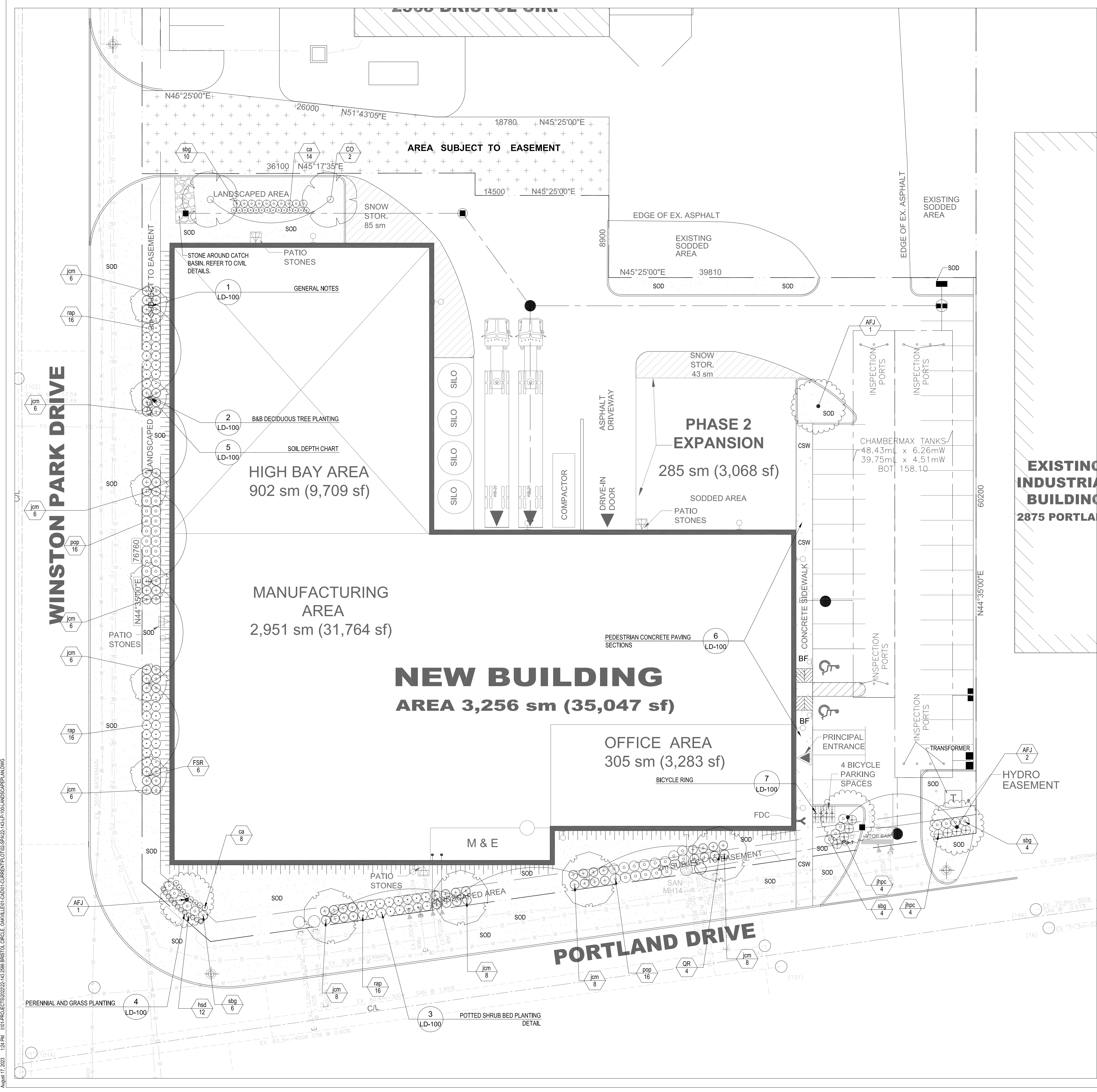
- DECIDUOUS TREE
- CONIFEROUS TREE
- CONTINUOUS SHRUB BED
- SOD
- CONCRETE PAVING
- BIKE RING QTY.-2



GENERAL NOTES

1. Drawing is in metric scale. Dimensions under 1000 mm are shown as whole number.
2. No extra will be allowed for discrepancies between the drawings and actual site conditions unless reported in writing prior to commencement of work.
3. Do not leave any holes open overnight.
4. Make good all damage resulting from the work at no extra cost.
5. Keep area outside construction zone clean and usable by others at all times.
6. No stockpile is allowed on site without Owner's approval and direction.
7. Contractor is to submit samples of all proposed materials in this contract for approval prior to placing orders.
8. Contractor to request stake out and verify locations for all utilities prior to any construction, and report all conflicts to the Landscape Architects in writing. Contractor to obtain written instructions prior to starting work.
9. This drawing to be read in conjunction with Architect's site plan and engineering drawings.
10. All shrubs and coniferous planting to be in continuous beds. All planting to meet municipality's specifications.
11. Contractor to layout all landscape elements, and confirm locations with the Landscape Architect prior to proceeding.
12. Landscape contractor must always follow the approved engineering grading plans. Report any discrepancies to landscape architect and engineer.
13. Master plant list, all plant material to be clay grown stock, Contractor to confirm that the plant quantities shown on the plant list conform to the landscape Drawings. Landscape drawings supersede the plant list totals. Any discrepancies not reported shall be the responsibility of the landscape contractor.
14. All shrubs to be fibre pot container stock. All trees to be string ball stock.
15. Contractor shall provide marked-up redline plans showing as-built conditions to the Landscape Architect prior to obtaining substantial completion.
16. Contractor to install new sod and new topsoil as per specifications and general notes throughout the site as designed. New topsoil and sod shall extend through the municipal boulevard to the rear of the municipal curb.
17. All planting beds that are surrounded by sod should be cut and edged at a 45° angle, so there is a clear and well defined separation between the planting beds and sodded areas.
18. The Landscape Contractor is to inform STUDIO ItA/Terraplan 30 days prior to the start date of the landscape construction.
19. The Landscape Contractor must contact STUDIO ItA/Terraplan to confirm start date 7 days prior to commencing the landscape construction.
20. In the event that the soil being used on the site deviates from the soil specifications provided by STUDIO ItA/Terraplan, the Landscape Contractor must provide reputable soil analysis. Soil used on the site must be approved by Terraplan.
21. STUDIO ItA/Terraplan inspections are required prior to payment.

PLANT SCHEDULE SITE								
DECIDUOUS TREES	CODE	QTY	BOTANICAL NAME	COMMON NAME	CONT.	CAL.	HT.	REMARKS
	AFJ	4	ACER FREEMANNI 'JEFFERSRED'	AUTUMN BLAZE MAPLE	B & B	70MM CAL		
	CO	2	CELTIS OCCIDENTALIS	COMMON HACKBERRY	B & B	70MM CAL		NATIVE
	FSR	6	FAGUS SYLVATICA 'RED OBELISK'	RED OBELISK BEECH	B & B	45MM CAL.		NATIVE
	QR	4	QUERCUS RUBRA	RED OAK	B & B	70MM CAL		NATIVE
DECIDUOUS SHRUBS	CODE	QTY	BOTANICAL NAME	COMMON NAME	CONT.	HT.	SPRL.	REMARKS
	ppp	32	PHYSCARPUS OPULEFOLIUS	NINEBARK	CONT.	60 CM		NATIVE
	ric	48	RIBES ALPINUM	ALPINE CURRANT	CONT.	60 CM		
	spq	24	SPIRAEA JAPONICA 'GOLDFLAME'	GOLDFLAME SPIREA	3 GAL.	60 CM		
EVERGREEN SHRUBS	CODE	QTY	BOTANICAL NAME	COMMON NAME	CONT.	HT.	SPRL.	REMARKS
	jpm	68	JUNIPERUS CHINENSIS 'MINT JULEP'	MINT JULEP JUNIPER	CONT.	60 CM		
	ppc	8	JUNIPERUS HORIZONTALIS 'PLUMOSA COMPACTA'	COMPACT ANDORRA JUNIPER	CONT.	60 CM		
GRASSES	CODE	QTY	BOTANICAL NAME	COMMON NAME	CONT.	HT.	SPRL.	REMARKS
	gr	22	CALAMAGROSTIS X ACUTIFLORA 'KARL FOERSTER'	FEATHER REED GRASS	1 GAL.			
PERENNIALS	CODE	QTY	BOTANICAL NAME	COMMON NAME	CONT.	HT.	SPRL.	REMARKS
	hd	12	HEMEROCALLIS X 'STELLA D'ORO'	DAVILY	1 GAL.	30CM		



no.	revision	date	by
3	RE-ISSUED FOR SPA	2023-08-17	TL
2	RE-ISSUED FOR SPA	2023-08-02	TL
1	ISSUED FOR SPA	2022-11-15	TL

CONTRACTOR MUST VERIFY ALL DIMENSIONS ON THE JOB AND REPORT ANY DISCREPANCY TO THE LANDSCAPE ARCHITECT BEFORE PROCEEDING WITH THE WORK.
ALL DRAWINGS AND SPECIFICATIONS ARE INSTRUMENTS OF SERVICE AND THE PROPERTY OF THE LANDSCAPE ARCHITECT WHICH MUST BE RETURNED AT THE COMPLETION OF THE WORK.
ALL DRAWINGS TO BE USED FOR CONSTRUCTION ONLY WHEN SIGNED BY THE LANDSCAPE ARCHITECT.

signed _____ date _____

STUDIO tla

20 Champlain Blvd, Suite 102 - Toronto ON - M3H 2Z1 info@studiotla.ca www.studiotla.ca

Cambria Design Build Ltd.

1250 Journey's End Circle, Unit #1
Newmarket, ON L3Y 0B9
TEL 905-830-6026
www.cambriadesign.ca

CLIENT
PREMIER POLY PRODUCTS
INDUSTRIAL DEVELOPMENT
OAKVILLE, ONTARIO

PROJECT
LANDSCAPE PLAN

DRAWING
DRAWN: TL
CHECKED:
SCALE: 1:200
DATE: 2022-06-16
PROJECT NO.: 22-143



SHEET NO.: **LP-100**