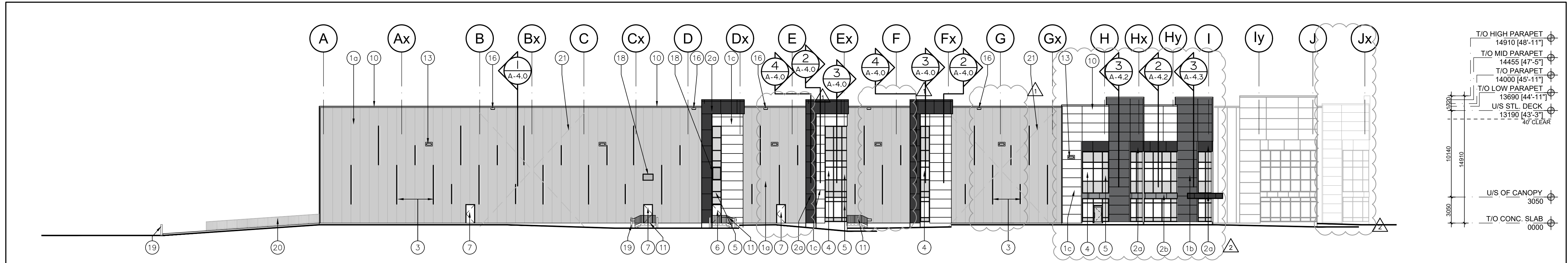
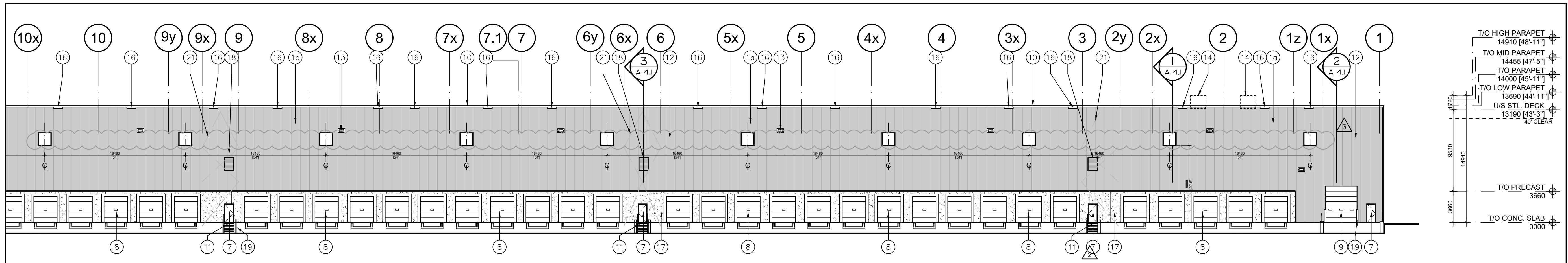


LEGEND

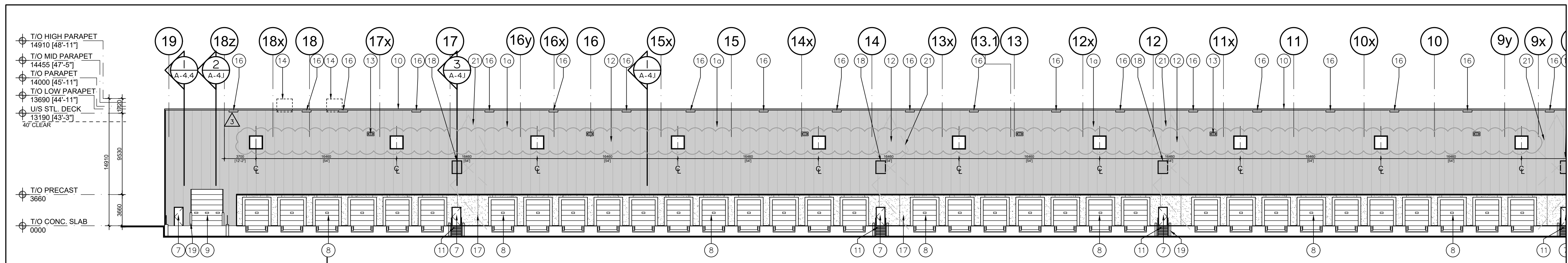
- 1a INSULATED METAL PANELS BY KINGSPAN KS SERIES WITH SHADOWLINE FINISH OR APPROVED EQUAL. COLOUR: LIGHT GREY. SAMPLE TO BE SUBMITTED FOR ARCHITECT'S APPROVAL.
- 1b INSULATED METAL PANELS BY KINGSPAN KS SERIES WITH SHADOWLINE FINISH OR APPROVED EQUAL. COLOUR: DARK GREY. SAMPLE TO BE SUBMITTED FOR ARCHITECT'S APPROVAL.
- 1c INSULATED METAL PANELS BY KINGSPAN KS SERIES WITH SHADOWLINE FINISH OR APPROVED EQUAL. COLOUR: WHITE. SAMPLE TO BE SUBMITTED FOR ARCHITECT'S APPROVAL.
- 2a PREFINISHED COMPOSITE ALUMINUM PANELS COLOUR: CHARCOAL
- 2b PREFINISHED COMPOSITE ALUMINUM PANELS COLOUR: LIGHT GREY
- 3 PREFINISHED METAL "FIN" (TWO LENGTHS -> 2250 or 4540mm). COLOUR: CHARCOAL GREY TO MATCH METAL PANELS.
- 4 WINDOW- THERMAL DOUBLE GLAZING (GREY TINT) IN PREFINISHED ALUMINUM CURTAIN WALL FRAMES. COLOUR OF CURTAIN WALL CAPS: BLACK ANODIZED ALUMINUM, C/W BIRD-FRIENDLY VISUAL MARKERS
- 5 SPANDREL GLAZING IN PREFINISHED ALUMINUM CURTAIN WALL FRAMES. COLOUR OF SPANDREL: OPACI-COAT # 3-3747 COSMIC GREY; COLOUR OF CURTAIN WALL CAPS: BLACK ANODIZED ALUMINUM
- 6 CLEAR TEMPERED THERMAL GLASS AND ALUMINUM DOOR(S). COLOUR OF ALUMINUM TO MATCH CURTAIN WALL CAPS.
- 7 MAN DOOR - INSULATED HOLLOW METAL DOOR PAINT COLOUR: TO MATCH ADJACENT METAL PANEL
- 8 INSULATED HOLLOW METAL OVERHEAD DOOR C/W TEMPERED GLASS VIEW WINDOW. COLOUR TO BE GREY TO MATCH INSULATED METAL PANELS. C/W DOCK SEAL, DOCK LEVELLER AND DOCK BUMPERS.
- 9 INSULATED HOLLOW METAL OVERHEAD DOOR C/W TEMPERED GLASS VIEW WINDOW. COLOUR TO BE GREY TO MATCH INSULATED METAL PANELS.
- 10 PREFINISHED METAL CAP FLASHING. COLOUR TO MATCH METAL PANELS BELOW.
- 11 STEEL GRATE EXTERIOR STAIR. PRIMED & MARINE OIL BASE PAINTED GREY.
- 12 TINTED THERMAL GLAZING IN ALUMINUM CURTAIN WALL FRAMES. COLOUR OF GLASS AND FRAMES TO MATCH WINDOWS, TAG # (GL-1). CAPS TO BE 50.8mm WIDE.
- 13 LIGHTING - WALL PAC. REFER TO ELECTRICAL DWGS.
- 14 ROOF TOP UNITS, TO BE SCREENED FROM PUBLIC VIEW.
- 15 STEEL GRATE EXTERIOR LADDER AND PLATFORM FOR FUEL LINE ACCESS. PRIMED & MARINE OIL BASE PAINTED GREY.
- 16 RAIN WATER RELIEF SCUPPER.
- 17 PRECAST CONCRETE WITH AGGREGATE FINISH. COLOUR TO BE WHITE.
- 18 STORM PROOF LOUVER. REFER TO MECHANICAL DRAWINGS.
- 19 PIPE BOLLARD, TYPE 'A' AS PER NOTE MS-25 ON SHEET A-0.0.
- 20 GALVANIZED GUARD SYSTEM. T/O GUARD SYSTEM @ 1070mm ABOVE TOP OF RETAINING WALL.
- 21 STRUCTURAL BRACING. REFER TO STRUCT. DWGS.



3 South Elevation
A-3.0 Scale = 1:250



2 Partial West Elevation
A-3.0 Scale = 1:250



1 Partial West Elevation
A-3.0 Scale = 1:250

No.	ISSUED	DATE
1	ISSUED FOR COORDINATION	MAR. 30, 2021
2	ISSUED FOR SPA	APR. 9, 2021
3	RE-ISSUED FOR SPA	DEC. 15, 2021
4	RE-ISSUED FOR SPA	DEC. 16, 2022
5	ISSUED FOR STEEL AND PRECAST TENDER	FEB. 17, 2023
6	REISSUED FOR STEEL TENDER	SEPT. 18, 2023
7	REISSUED FOR SPA	DEC. 19, 2023

3	REVISED AS NOTED	DEC. 15, 2023
2	REVISED AS NOTED	NOV. 10, 2023
1	REVISED AS NOTED	JULY 28, 2023

No.	REVISION	DATE
-----	----------	------

BALDASSARRA
Architects Inc.

30 Great Gulf Drive, Unit 20 | Concord ON | L4K 0K7
T. 905.660.0722 | www.baldassarra.ca



OWNERS INFORMATION:

FENGATE

772 Winston Churchill Blvd.
Oakville, Ontario

**ELEVATIONS
Building A**

DATE:	DRAWN BY:	CHECKED:	SCALE:
MAR. 2021	HP		AS NOTED

PROJECT No. 22-77 A
DRAWING No. A-3.1

03/2027 - 772 Winston Churchill - Fengate Architects Ltd. - Current Drawings: A-3.0, A-3.1, A-3.2, A-3.3, A-3.4, A-3.5, A-3.6, A-3.7, A-3.8, A-3.9, A-3.10, A-3.11, A-3.12, A-3.13, A-3.14, A-3.15, A-3.16, A-3.17, A-3.18, A-3.19, A-3.20, A-3.21, A-3.22, A-3.23, A-3.24, A-3.25, A-3.26, A-3.27, A-3.28, A-3.29, A-3.30, A-3.31, A-3.32, A-3.33, A-3.34, A-3.35, A-3.36, A-3.37, A-3.38, A-3.39, A-3.40, A-3.41, A-3.42, A-3.43, A-3.44, A-3.45, A-3.46, A-3.47, A-3.48, A-3.49, A-3.50, A-3.51, A-3.52, A-3.53, A-3.54, A-3.55, A-3.56, A-3.57, A-3.58, A-3.59, A-3.60, A-3.61, A-3.62, A-3.63, A-3.64, A-3.65, A-3.66, A-3.67, A-3.68, A-3.69, A-3.70, A-3.71, A-3.72, A-3.73, A-3.74, A-3.75, A-3.76, A-3.77, A-3.78, A-3.79, A-3.80, A-3.81, A-3.82, A-3.83, A-3.84, A-3.85, A-3.86, A-3.87, A-3.88, A-3.89, A-3.90, A-3.91, A-3.92, A-3.93, A-3.94, A-3.95, A-3.96, A-3.97, A-3.98, A-3.99, A-3.100