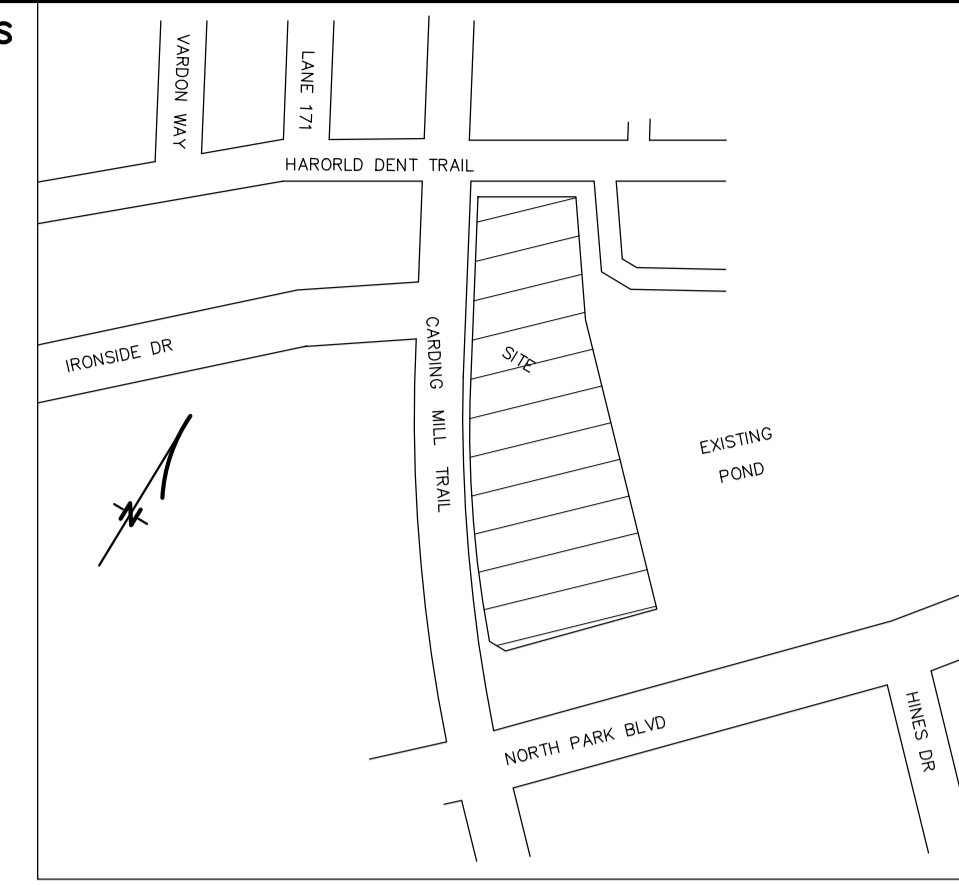


NOTES

- P.I.N. DENOTES PROPERTY IDENTIFIER NUMBER
- UP DENOTES STEPS UP
- DN DENOTES STEPS DOWN
- E.C. DENOTES ELECTRICAL CLOSET
- F.H.C. DENOTES FIREHOSE CABINET
- G.C.P. DENOTES GARBAGE CHUTE
- V DENOTES VISITOR PARKING
- H/C DENOTES HANDICAP
- PT DENOTES PATIO
- L DENOTES LOCKER
- B DENOTES BALCONY
- (C) DENOTES COMMERCIAL

ALL AREA MEASUREMENTS ARE COMPUTER GENERATED.
 ALL LAND USE INFORMATION ARE PROVIDED BY Q4 ARCHITECTS INC.
 (RECEIVED ON 04 JANUARY 2022).



DRAFT PLAN OF STANDARD CONDOMINIUM OF BLOCK 299
PLAN 20M-1198
TOWN OF OAKVILLE
REGIONAL MUNICIPALITY OF HALTON

SCALE 1:250
 0 10m 20m 30metres

R-PE SURVEYING LTD., O.L.S.
METRIC
 DISTANCES AND COORDINATES SHOWN ON THIS PLAN ARE IN METRES AND CAN BE CONVERTED TO FEET BY DIVIDING BY 0.3048.

SURVEYOR'S CERTIFICATE

I HEREBY CERTIFY THAT THE BOUNDARIES OF THE LANDS TO BE SUBDIVIDED AND THEIR RELATIONSHIP TO THE ADJOINING LANDS ARE ACCURATELY AND CORRECTLY SHOWN.

DATE OCTOBER 04, 2022

Y. WAHBA
 Y. WAHBA
 ONTARIO LAND SURVEYOR

OWNER'S CERTIFICATE

I HEREBY AUTHORIZE R-PE SURVEYING LTD., O.L.S. TO PREPARE AND SUBMIT THIS DRAFT PLAN OF STANDARD CONDOMINIUM TO THE TOWN OF OAKVILLE FOR APPROVAL.

MATTAMY (CARDING MILL) LIMITED

DATE 11-10-22, 2022

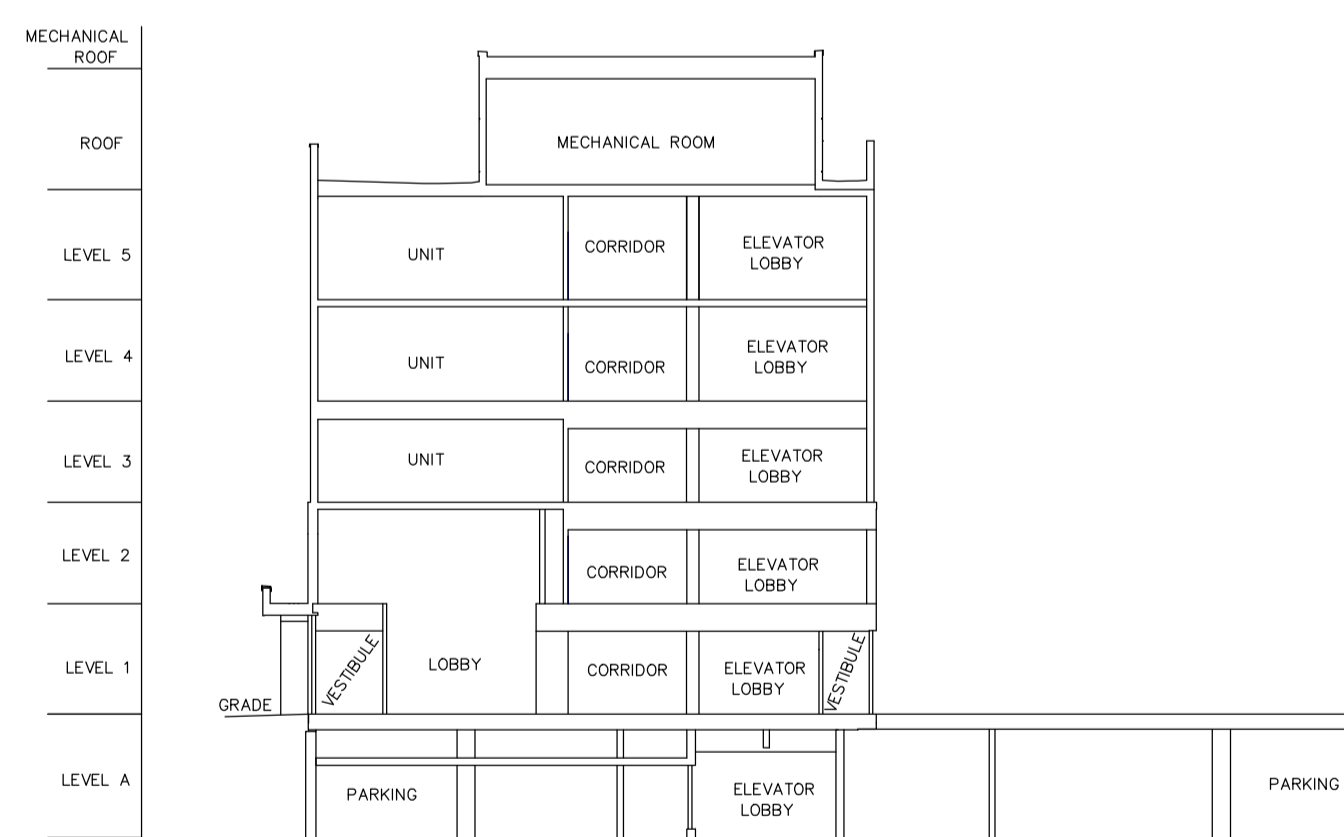
DocuSigned by:
James Circosta
 JAMES CIRCOSTA
 AUTHORIZED SIGNING OFFICER
 I HAVE THE AUTHORITY TO BIND THE CORPORATION

ADDITIONAL INFORMATION REQUIRED UNDER SECTION 51 (17) OF THE PLANNING ACT

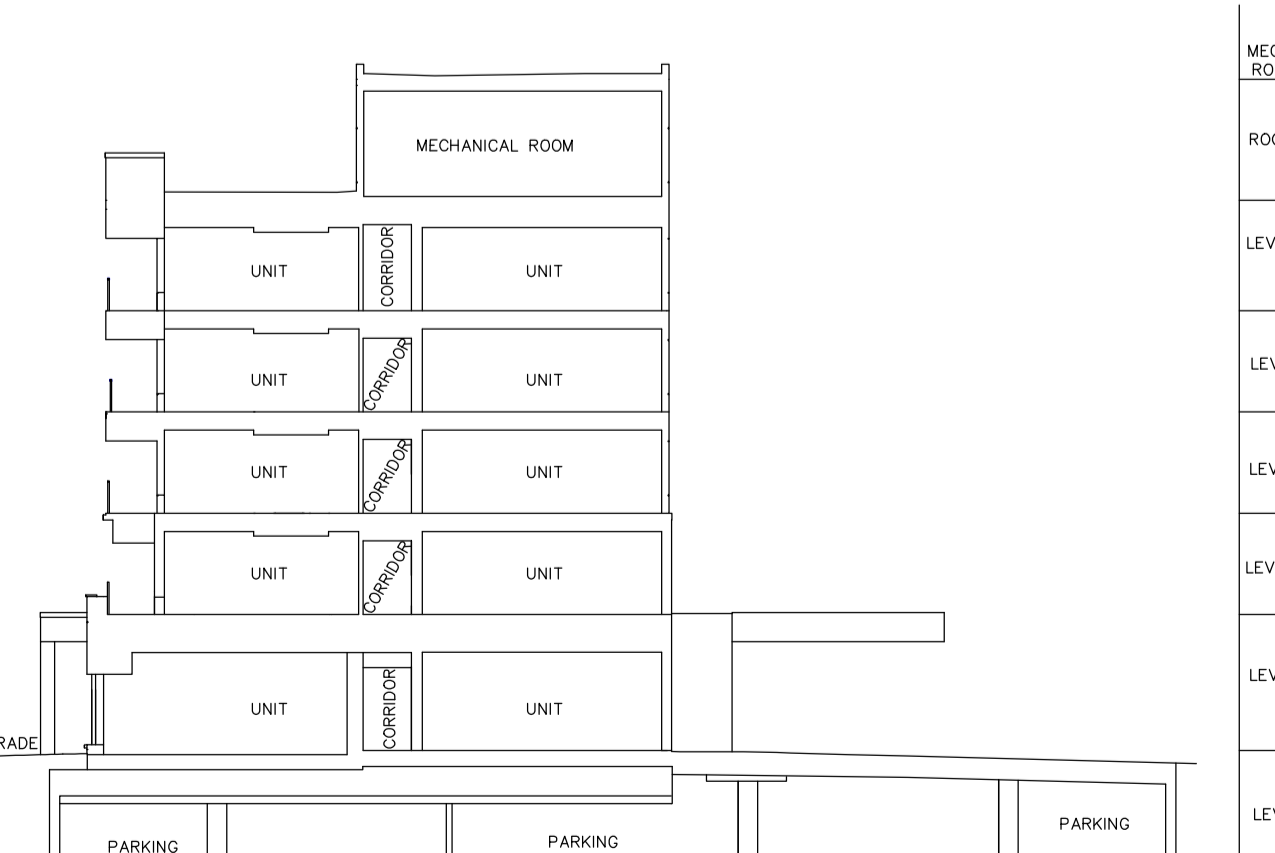
- (b) SEE PLAN
- (c) SEE PLAN
- (d) RESIDENTIAL/COMMERCIAL
- (e) SEE PLAN
- (f) SEE PLAN
- (g) SEE PLAN
- (h) PIPED WATER
- (i) SEE SOIL REPORT
- (j) SEE SITE AND GRADING PLAN
- (k) FULLY SERVICED
- (l) SEE PLAN

LAND USE

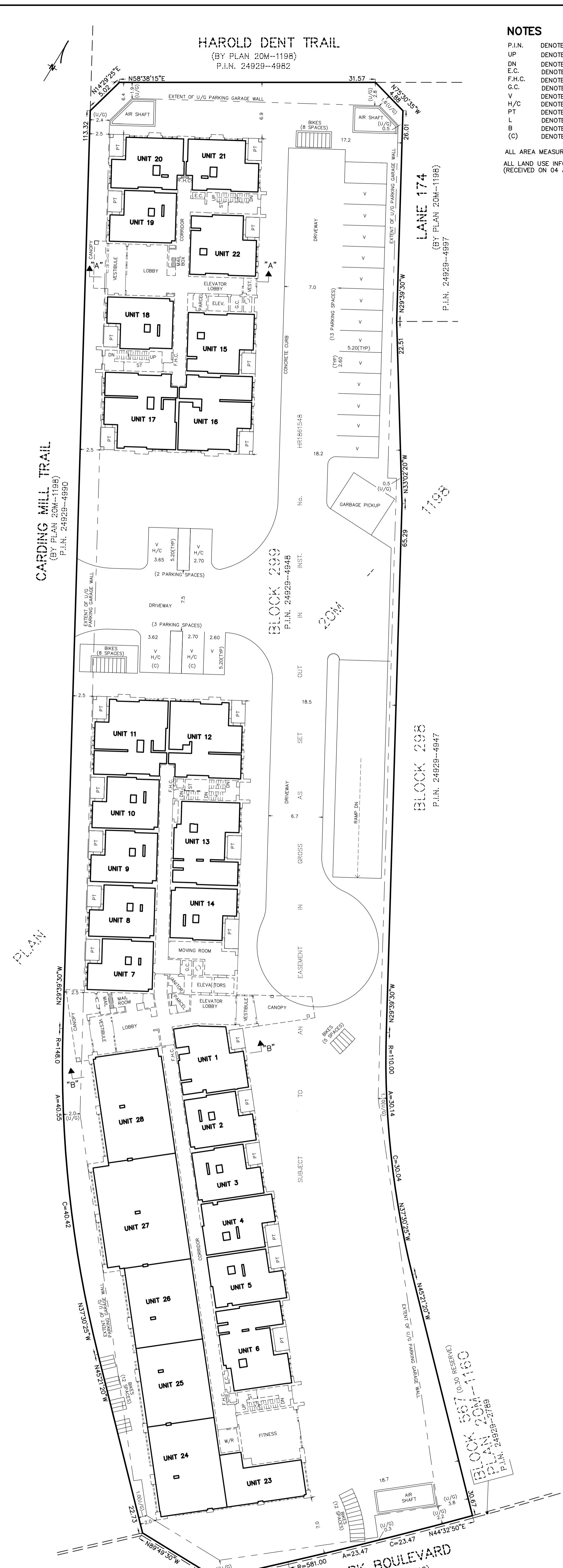
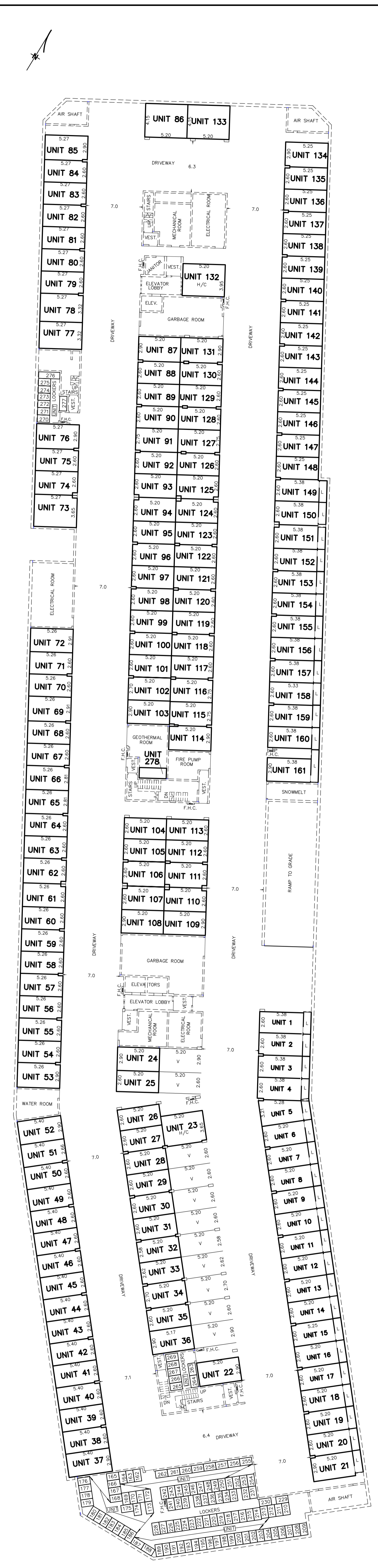
SITE AREA : 7209.86 SQM
 GROSS FLOOR AREA: 12114.50 SQM (INCLUDES COMMERCIAL AREA)
 PARKING PROVIDED:
 RESIDENTIAL: 153 SPACES (INCLUDES 34 COMBINED PARKING/LOCKER SPACES)
 COMMERCIAL: 8 SPACES
 VISITORS PARKING: 16 SPACES (ON SURFACE)
 2 COMMERCIAL SPACES (ON SURFACE)
 11 SPACES (UNDERGROUND)
 TOTAL PARKING PROVIDED : 190 SPACES (INCLUDING 6 H/C SPACES)
 TOTAL RESIDENTIAL UNITS: 147 UNITS
 LOCKER UNITS: 150 UNITS (INCLUDES 34 COMBINED PARKING/LOCKER UNITS)
 TOTAL COMMERCIAL UNITS: 6 UNITS



SECTION "A"-A' TO ILLUSTRATE THE VERTICAL RELATIONSHIP BETWEEN LEVELS (NOT TO SCALE)



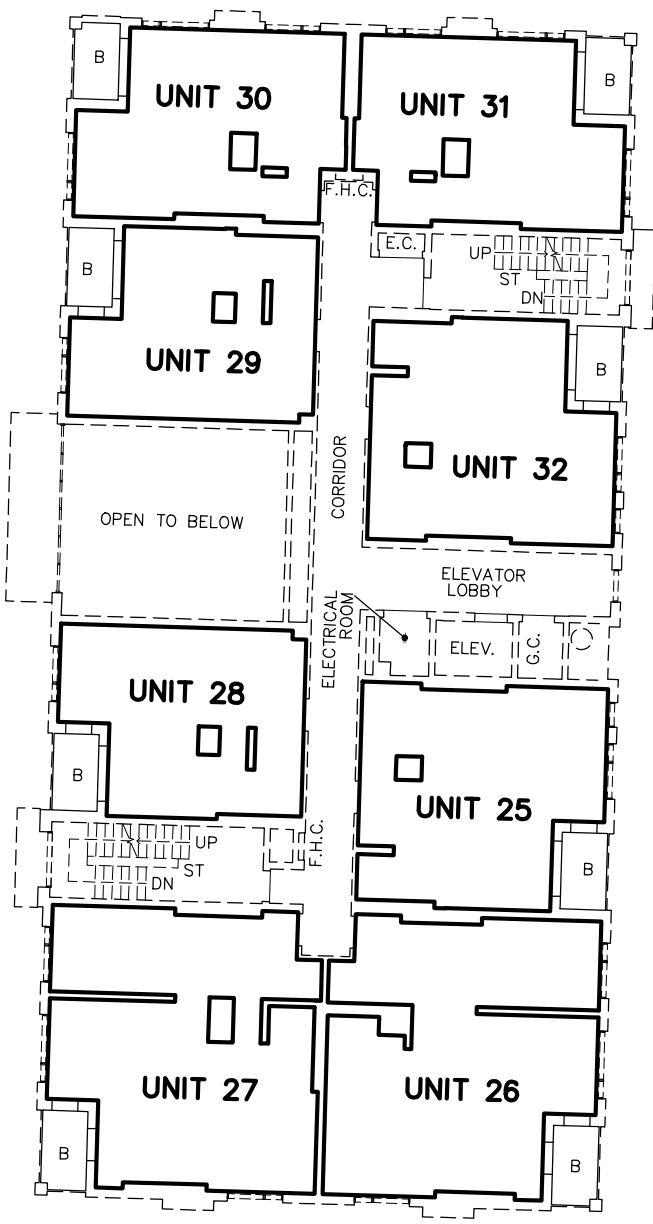
SECTION "B"-B' TO ILLUSTRATE THE VERTICAL RELATIONSHIP BETWEEN LEVELS (NOT TO SCALE)



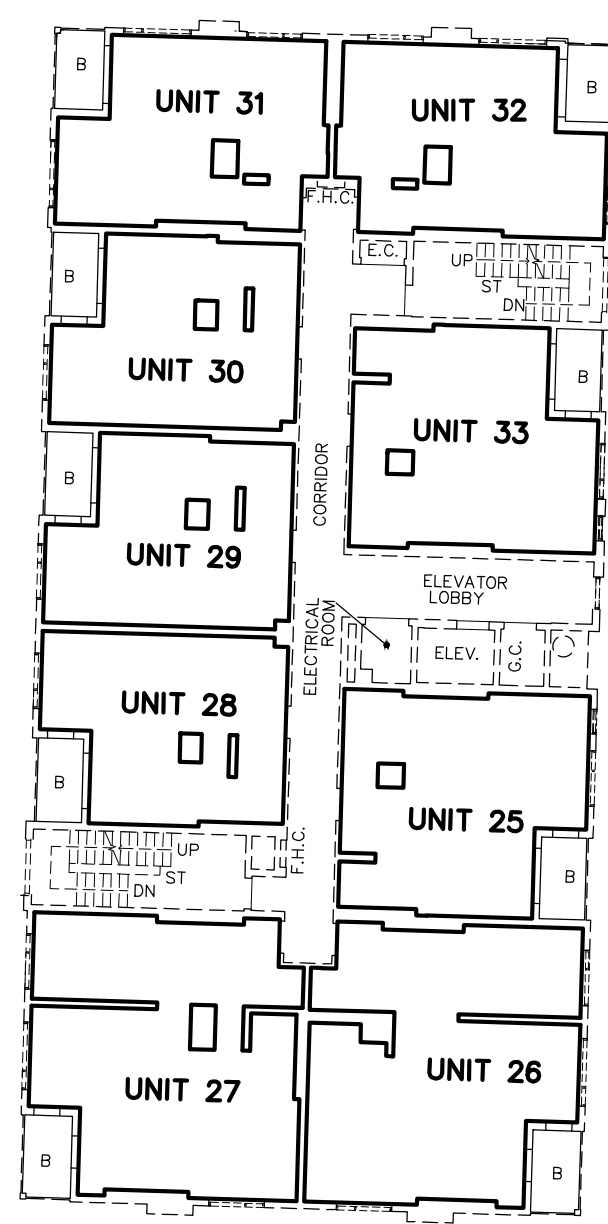
COMBINED PARKING/LOCKER UNITS 1 TO 21, INCLUSIVE, 149 TO 161, INCLUSIVE
 PARKING UNITS 22 TO 36, INCLUSIVE, 45 TO 148, INCLUSIVE
 COMMERCIAL PARKING UNITS 37 TO 44, INCLUSIVE
 LOCKER UNITS 162 TO 277, INCLUSIVE,
 GEOTHERMAL UNIT 278
 ON LEVEL A

RESIDENTIAL UNITS 1 TO 22, INCLUSIVE
 COMMERCIAL UNITS 23 TO 28, INCLUSIVE
 LEVEL 1

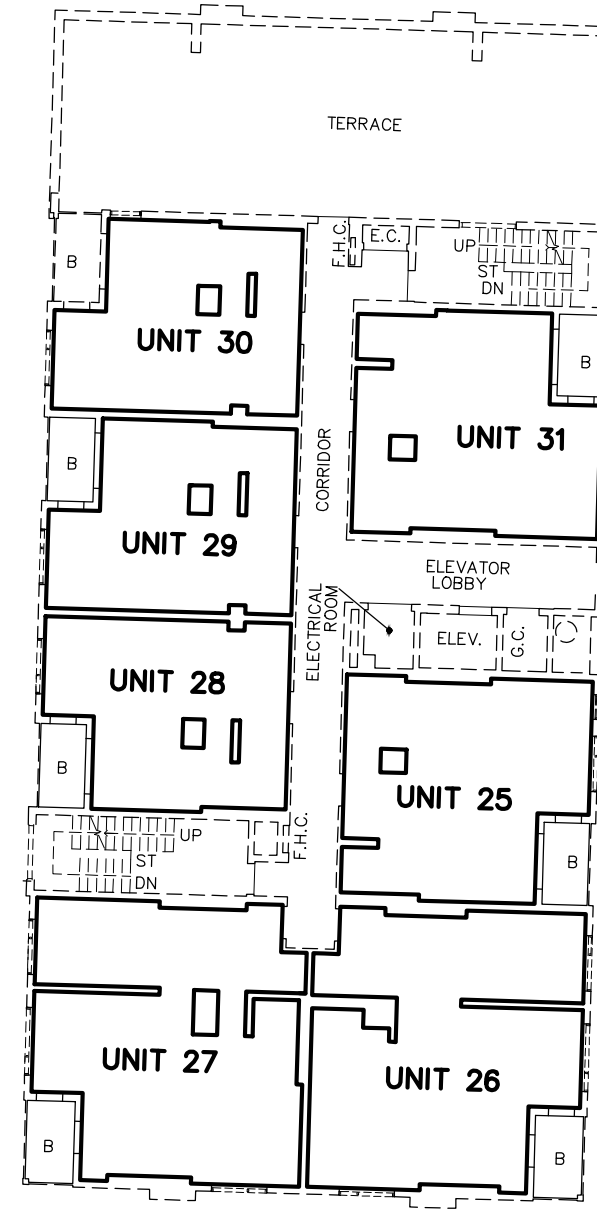
rpe R-PE SURVEYING LTD.
 ONTARIO LAND SURVEYORS
 643 Christie Road, Suite 7
 Woodbridge, Ontario L4L 8A3
 Tel: (416) 635-5000 Fax: (416) 635-5001
 Tel: (905) 264-0881 Fax: (905) 264-2099
 Website: www.r-pe.ca
 DRAWN: Y.B./E.G. CHECKED: Y.W.
 JOB No. 21-083
 CAD FILE No. 21-083-DR PLAN-1a



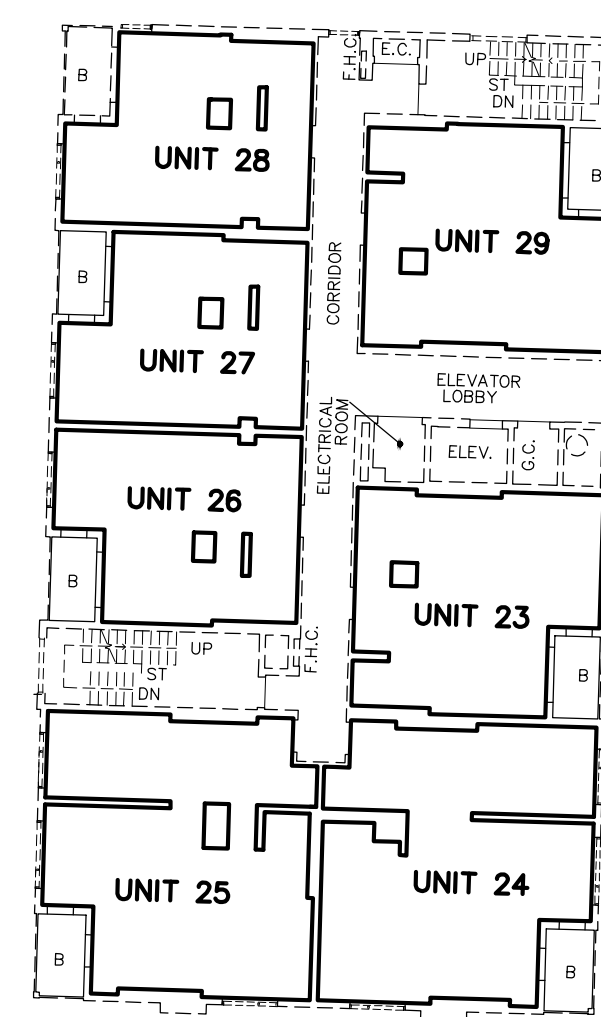
RESIDENTIAL UNITS 1 TO 32, INCLUSIVE ON LEVEL 2



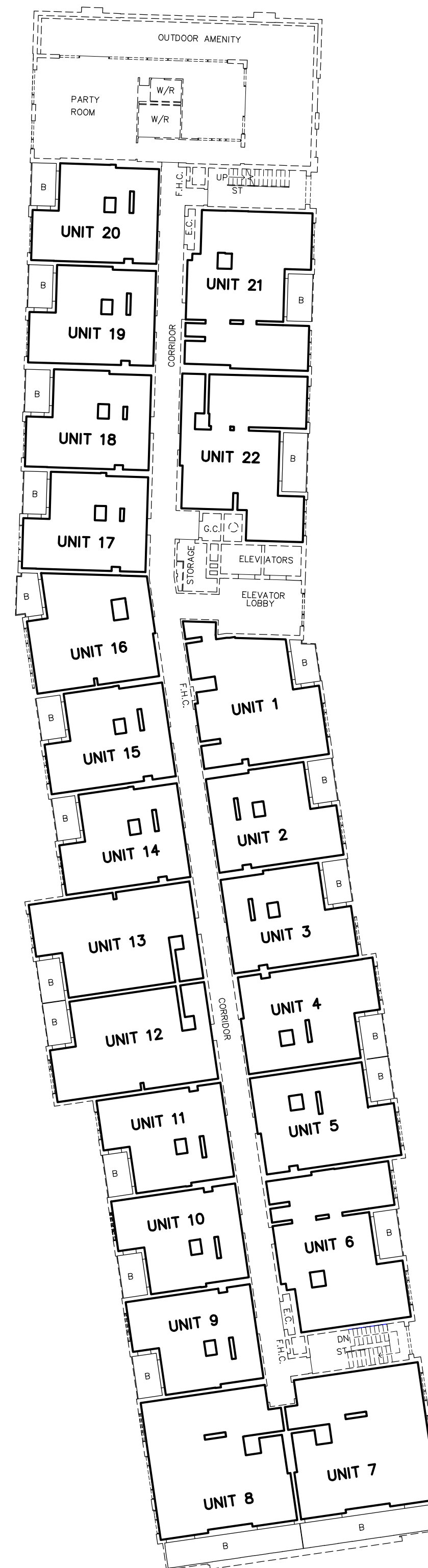
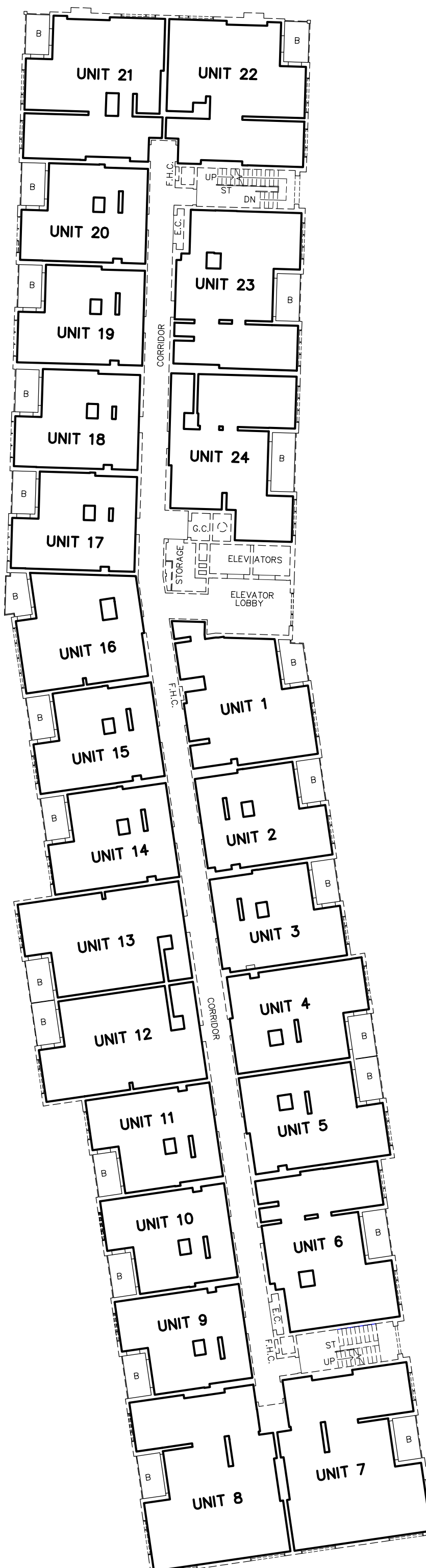
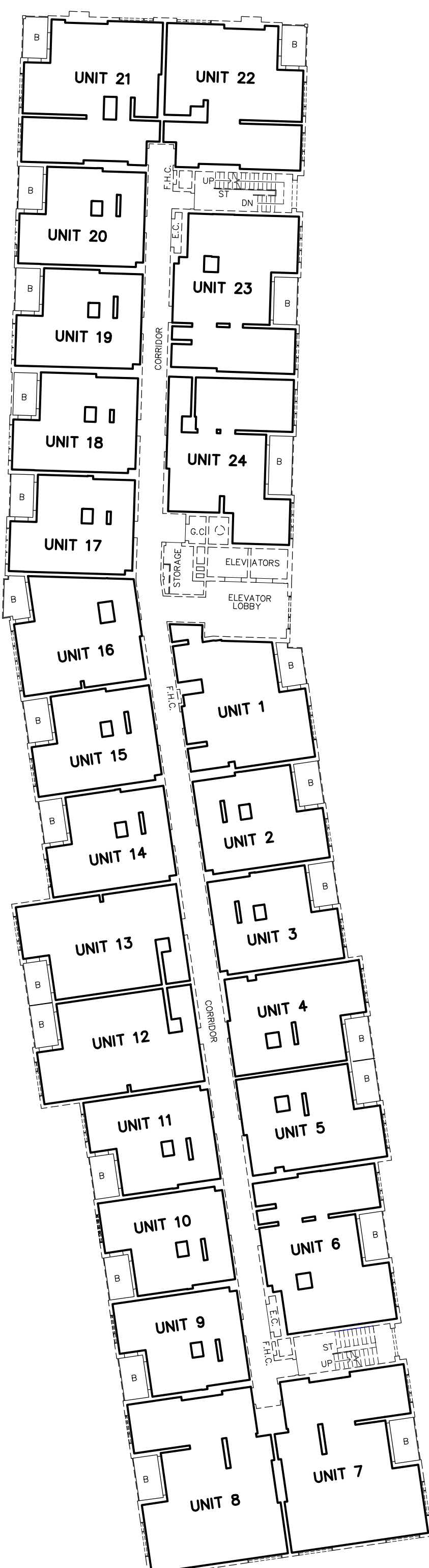
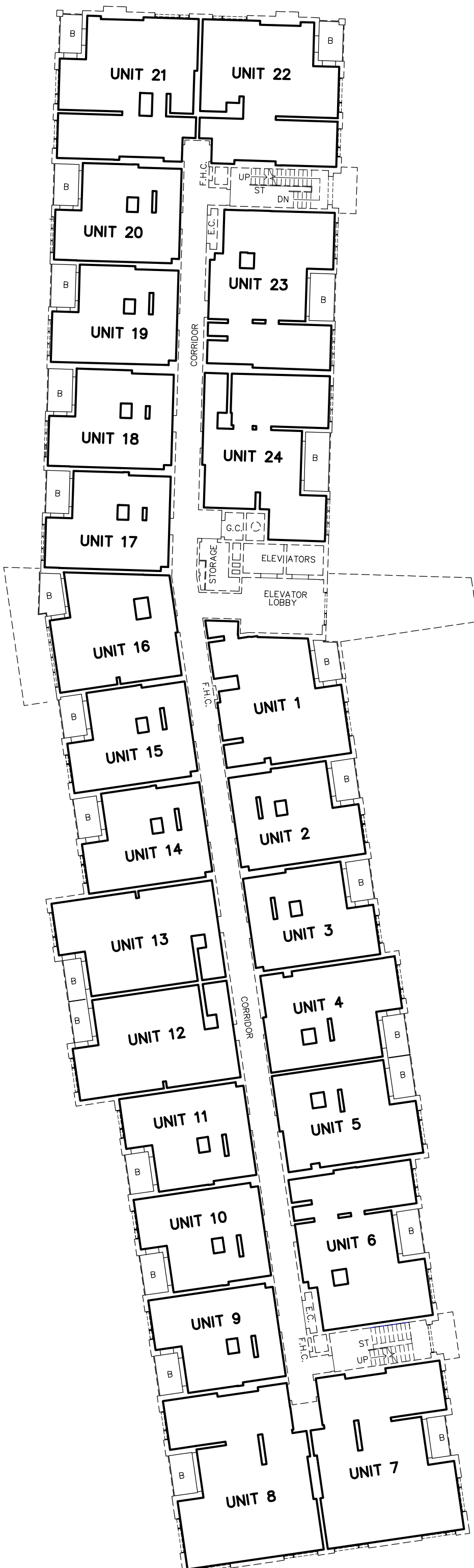
RESIDENTIAL UNITS 1 TO 33, INCLUSIVE ON LEVEL 3



RESIDENTIAL UNITS 1 TO 31, INCLUSIVE ON LEVEL 4



RESIDENTIAL UNITS 1 TO 29, INCLUSIVE ON LEVEL 5



rpe R-PE SURVEYING LTD.
 ONTARIO LAND SURVEYORS
 643 Chrislea Road, Suite 7
 Woodbridge, Ontario L4L 8A3
 Tel. (416) 635-5000 Fax (416) 635-5001
 Tel. (905) 264-0881 Fax (905) 264-2099
 Website: www.r-pe.ca
 DRAWN: Y.B./E.G. CHECKED: Y.W.
 JOB No. 21-083
 CAD FILE No. 21-083-DR PLAN-2a