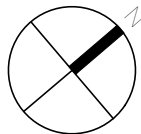


- NOTES:
- AS PER THE TOWN OF OAKVILLE  
DRIVEWAY ENTRANCE CRITERIA STD.10-2
- ENTRANCE WIDTH AT PROPERTY LINE  
FOR A MINOR ROAD TYPE IS 7.5m
  - CURB RADIUS SHOULD BE BETWEEN  
4.5M TO 6.0M

DRAWN BY: H.S. PLOT DATE: March 13, 2023

LEA Consulting Ltd.  
Consulting Engineers  
and Planners  
www.LEA.ca



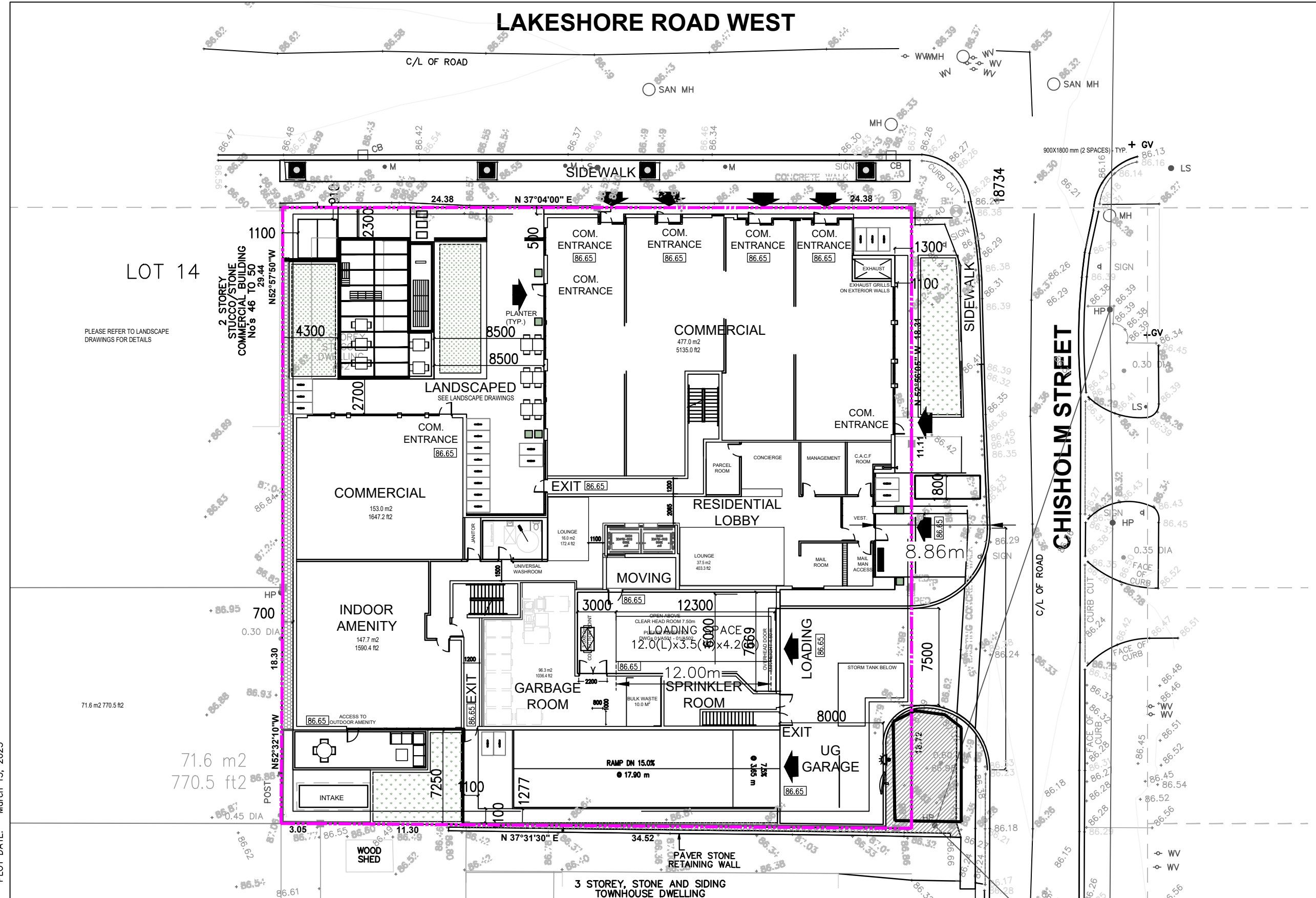
Project No.  
23129  
Date  
AUG 24, 2023

42 LAKESHORE ROAD W  
OAKVILLE ONTARIO

3 0 3 6 9m  
1: 300

ACCESS DESIGN REVIEW

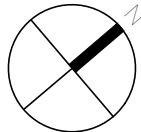
Drawing No.  
000



- NOTES:
- AS PER THE ONTARIO BUILDING CODE 3.2.5
- 5.1 LOCATION OF ACCESS ROUTES – ACCESS ROUTES SHALL BE LOCATED SO THAT THE PRINCIPAL ENTRANCE AND EVERY ACCESS OPENING ARE LOCATED NOT LESS THAN 3m AND NOT MORE THAN 15m FROM THE CLOSEST PORTION OF THE ACCESS ROUTE
  - 6.1 ACCESS ROUTE DESIGN – A PORTION OF A ROADWAY PROVIDED AS A REQUIRED ACCESS ROUTE FOR FIRE DEPARTMENT USE SHALL:
    - 6.1.a HAVE A CLEAR WIDTH NOT LESS THAN 6m,
    - 6.1.b HAVE A CENTRELINE RADIUS NOT LESS THAN 12m
    - 6.1.c HAVE AN OH CLEARANCE OF NOT LESS THAN 5m
    - 6.1.g BE CONNECTED WITH A PUBLIC THOROUGHFARE

DRAWN BY: H.S. PLOT DATE: March 13, 2023

LEA Consulting Ltd.  
Consulting Engineers  
and Planners  
www.LEA.ca



Project No.  
23129  
Date  
AUG 24, 2023

42 LAKESHORE ROAD W  
OAKVILLE ONTARIO

3 0 3 6 9m  
1:300

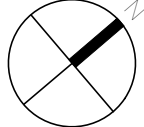
FIRE ROUTE REVIEW

Drawing No.  
001



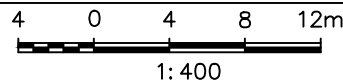
PLOT DATE: March 13, 2023

**LEA Consulting Ltd**  
Consulting Engineers  
and Planners  
**www.LEA.ca**



Project No.	23129
Date	AUG 24, 2023

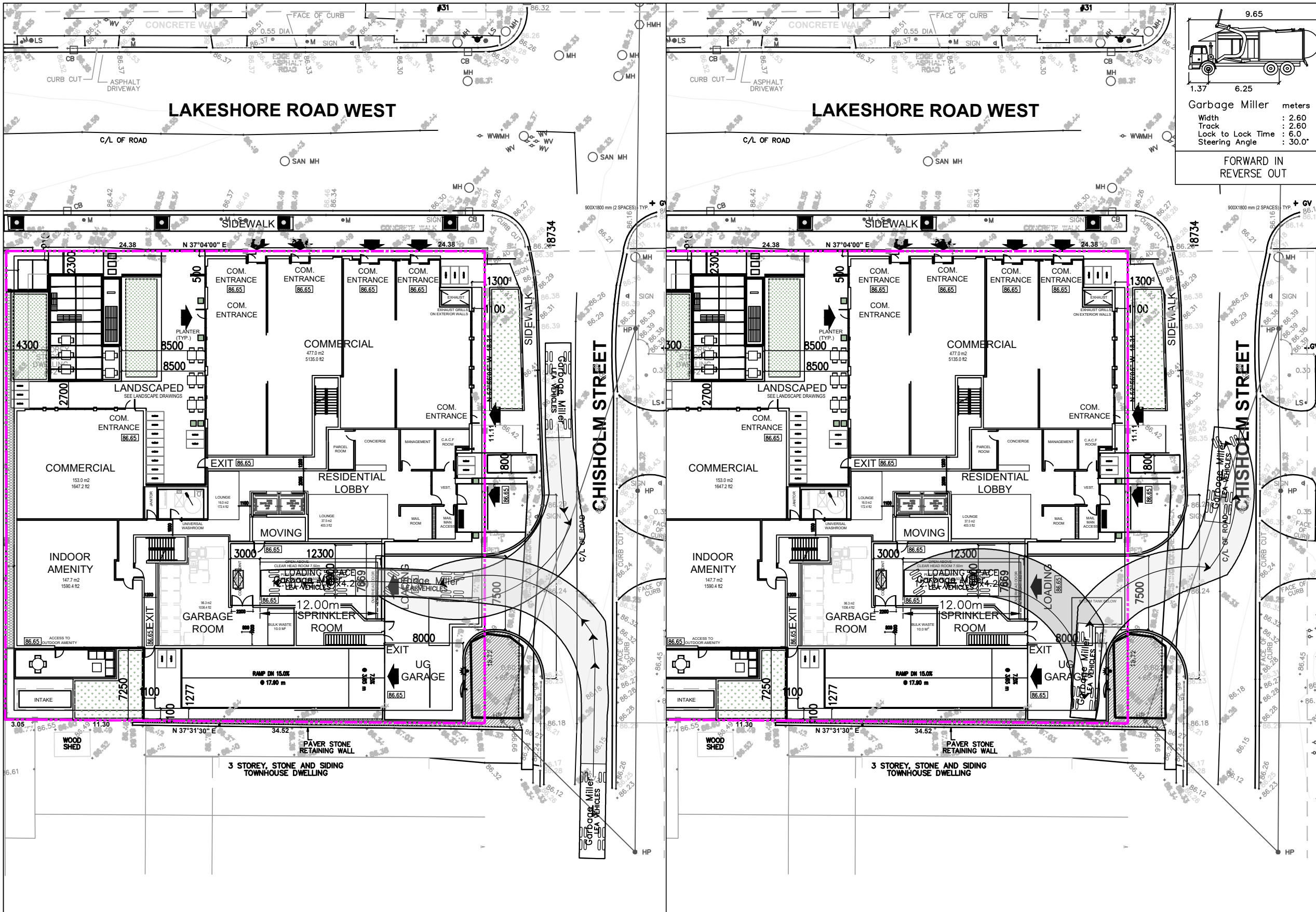
42 LAKESHORE ROAD W  
OAKVILLE ONTARIO



LOADING REVIEW  
PRIVATE PICKUP (MILLER)  
ENTRY AND EXIT PATH

Drawing No.

002



NOTES: AS PER HALTON REGION  
DEVELOPMENT GUIDELINES FOR SOURCE  
SEPARATION OF SOLID WASTE:

1.10.1.1. PRIVATE ROADS LAYOUTS SHALL ALLOW FOR DIRECT, CONSISTENT AND SAFE ACCESS FROM A MUNICIPAL ROAD TO THE WASTE COLLECTION POINT AND BACK TO THE MUNICIPAL ROAD WITHOUT DELAYS OR REVERSING ONTO THE MUNICIPAL ROAD.

1.10.1.2. PRIVATE ROAD LAYOUTS SHALL ALLOW FOR THE CONTINUOUS FORWARD COLLECTION OF WASTE WITHOUT THE NEED FOR WASTE COLLECTION VEHICLES TO REVERSE.

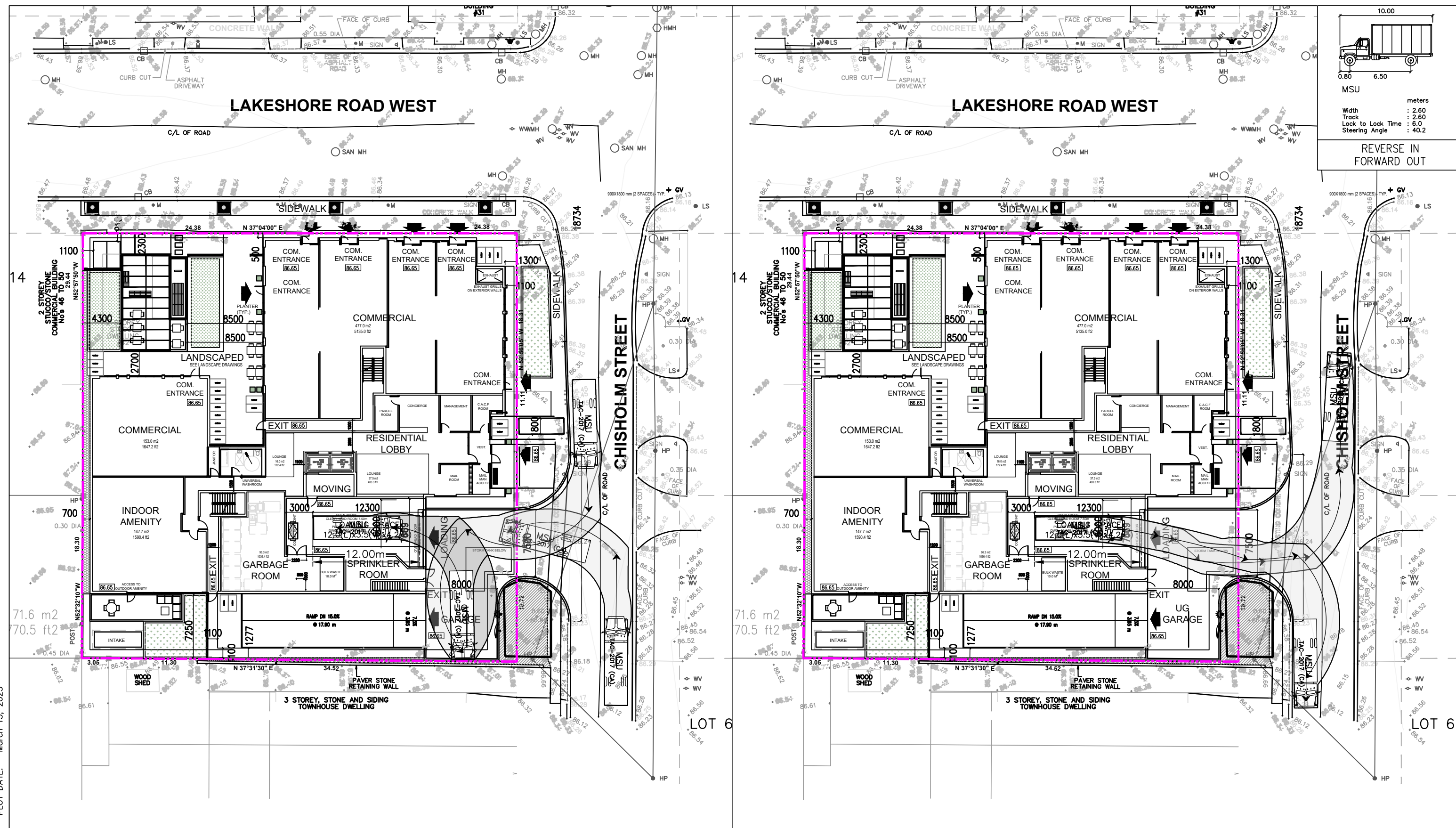
1.10.1.3. ALL PRIVATE ROADS SHALL BE CONSTRUCTED WITH A HARD SURFACE, SUCH AS ASPHALT, CONCRETE, OR ANOTHER SUITABLE MATERIAL ACCEPTABLE TO THE REGION, AND HAVE A MINIMUM WIDTH OF 6 METRES.

1.10.1.4. ALL TURNS SHALL HAVE A MINIMUM TURNING RADIUS FROM THE CENTRE LINE OF 13 METRES TO THE SATISFACTION OF THE REGION.

1.10.1.5. OVERHEAD CLEARANCE  
THROUGHOUT THE PRIVATE ROAD MUST  
BE A MINIMUM OF 7.5 METRES AND BE  
FREE FROM OBSTRUCTIONS SUCH AS  
OVERHANGS, AWNINGS, UTILITY WIRES,  
BALCONIES, AND MUST BE KEPT CLEAR  
OF TREE BRANCHES, ETC. 1.10.2:  
T-TURNAROUND MAY BE PERMITTED IN  
ACCORDANCE WITH SPECIFICATIONS  
OUTLINED IN APPENDIX 3. WASTE  
COLLECTION VEHICLES ARE NOT EXPECTED  
TO BACK UP MORE THAN 18M (FROM  
FRONT WHEEL TO FRONT WHEEL)

5. AS PER THE THE TOWN OF OAKVILLE,  
6. ZONING BYLAW 2014-014 :

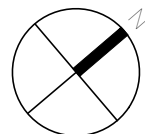
1. THE MINIMUM DIMENSIONS OF A LOADING SPACE ARE 3.5 METRES IN WIDTH AND 12.0 METRES IN LENGTH, WITH A MINIMUM VERTICAL CLEARANCE OF 4.2 METRES.
2. FLASHING WARNING LIGHT TO BE ACTIVATED WHEN TRUCKS ENTER AND EXIT THE SITE. THE SYSTEM TO REMAIN ACTIVATED DURING THE CITY GARBAGE COLLECTION ACTIVITY AND UNTIL THE TRUCK EXITS THE SITE.





DRAWN BY: H.S. PLOT DATE: March 13, 2023

LEA Consulting Ltd.  
Consulting Engineers  
and Planners  
www.LEA.ca



Project No.  
23129  
Date  
AUG 24, 2023

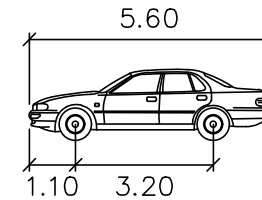
42 LAKESHORE ROAD W  
OAKVILLE ONTARIO

3 0 3 6 9m  
1: 300

PARKING REVIEW  
LEVEL P1  
SWEEP PATHS

Drawing No.

004



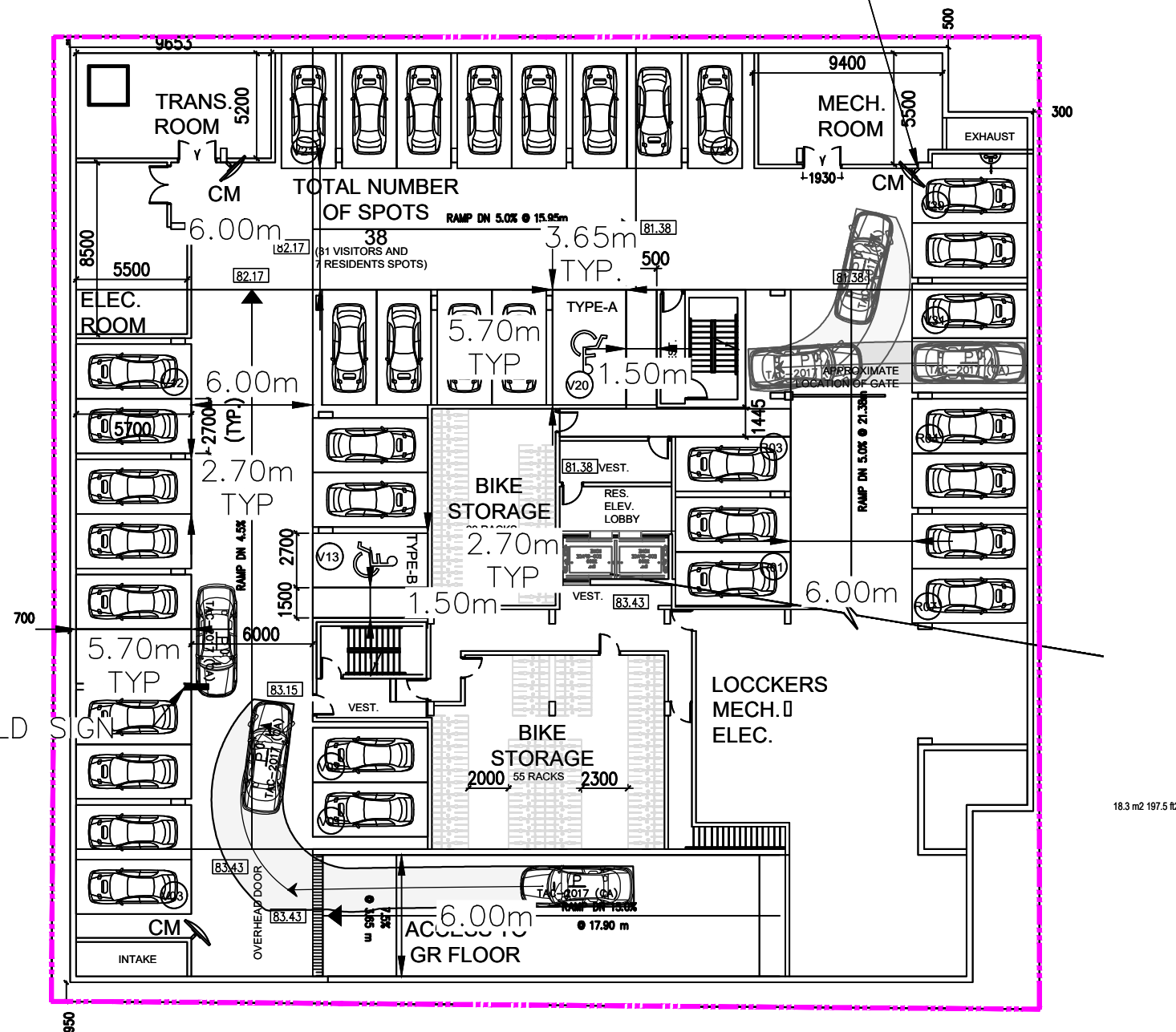
P  
Width : 2.00 meters  
Track : 2.00  
Lock to Lock Time : 6.0  
Steering Angle : 35.9

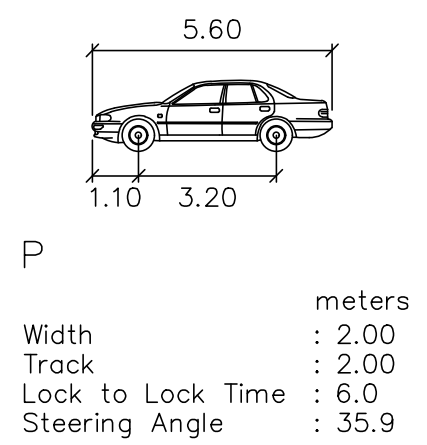
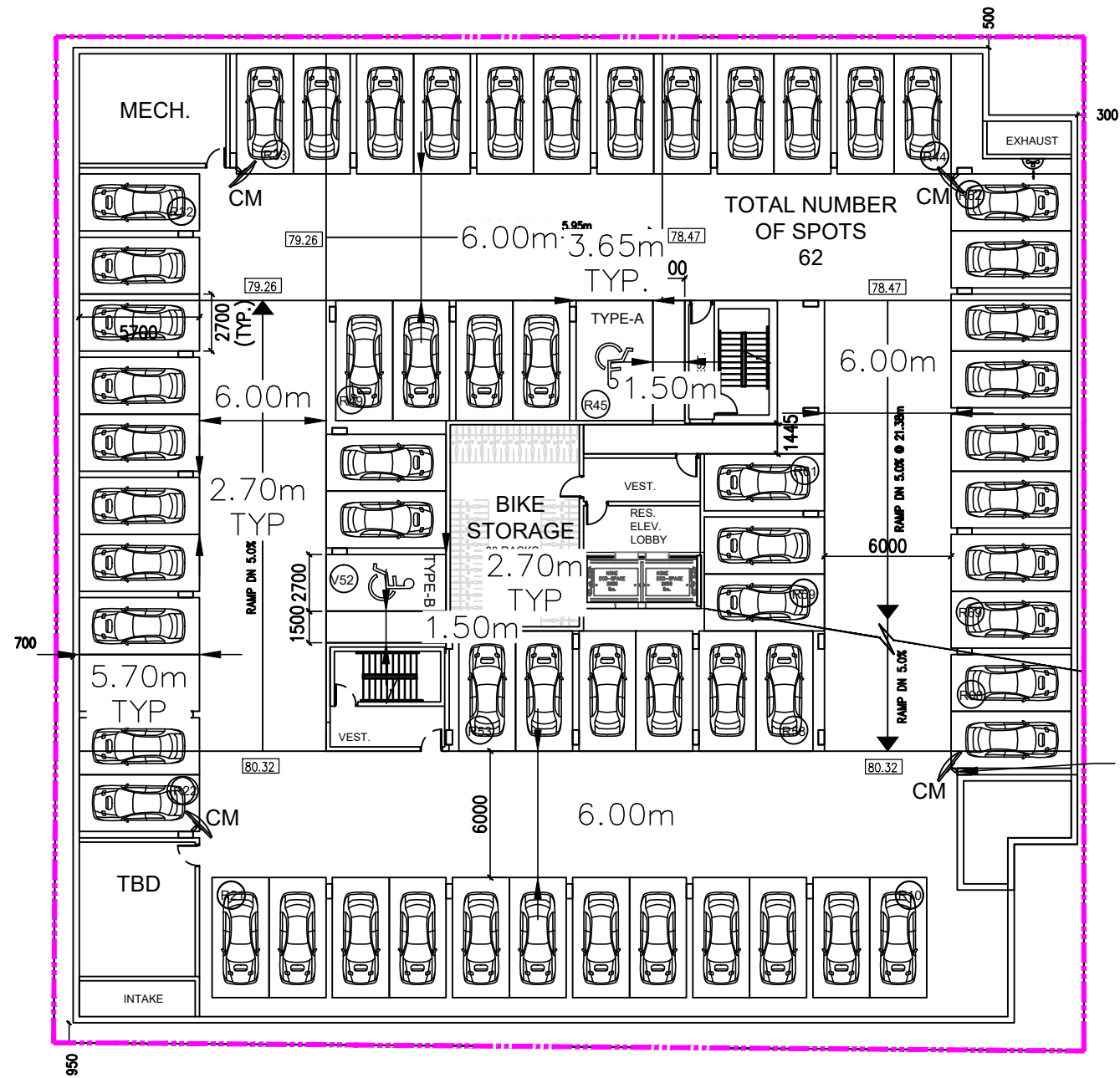
NOTES: TOWN OF OAKVILLE ZONING BY-LAW 2014-014:

- IF THE CENTRELINE OF A PARKING SPACE IS AT AN INTERIOR ANGLE OF 70 TO 90 DEGREES TO THE CENTRELINE OF THE DRIVE AISLE PROVIDING VEHICLE ACCESS, THE MINIMUM WIDTH FOR THAT ONE OR TWO LANE DRIVE AISLE IS 6.0 METRES.
- A PARKING SPACE MUST HAVE THE FOLLOWING MINIMUM DIMENSIONS:  
(i) LENGTH OF 5.7 METRES;  
(ii) WIDTH OF 2.7 METRES; AND  
(iii) THE MINIMUM WIDTH IN (ii) MUST BE INCREASED BY 0.3 METRES FOR EACH SIDE OF THE PARKING SPACE THAT IS OBSTRUCTED.
- AN ACCESSIBLE PARKING SPACE MUST HAVE THE FOLLOWING MINIMUM DIMENSIONS:  
TYPE A:  
(i) LENGTH OF 5.7 METRES;  
(ii) WIDTH OF 3.65 METRES; AND  
(iii) BARRIER-FREE PATH OF 1.5 METRES IN WIDTH.  
TYPE B:  
(i) LENGTH OF 5.7 METRES;  
(ii) WIDTH OF 2.7 METRES; AND  
(iii) BARRIER-FREE PATH OF 1.5 METRES IN WIDTH.
- THE SIDE OF A PARKING SPACE IS OBSTRUCTED IF ANY PART OF A FIXED OBJECT SUCH AS A WALL, COLUMN, BOLLARD, FENCE OR PIPE IS SITUATED:  
(i) WITHIN 0.3 METRES OF THE SIDE OF THE PARKING SPACE, MEASURED AT RIGHT ANGLES, AND  
(ii) MORE THAN 1.15 METRE FROM THE FRONT OR REAR OF THE PARKING SPACE PROVIDED THE OBSTRUCTION PROJECTS NO MORE THAN 0.15M INTO THE PARKING SPACE

COLUMN-MOUNTED YIELD SIGN

COLUMN/WALL-MOUNTED  
CONVEX MIRROR (TYP.)





NOTES: TOWN OF OAKVILLE ZONING BY-LAW 2014-014:

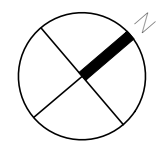
- 1. IF THE CENTRELINE OF A PARKING SPACE IS AT AN INTERIOR ANGLE OF 70 TO 90 DEGREES TO THE CENTRELINE OF THE DRIVE AISLE PROVIDING VEHICLE ACCESS, THE MINIMUM WIDTH FOR THAT ONE OR TWO LANE DRIVE AISLE IS 6.0 METRES.
- 2. A PARKING SPACE MUST HAVE THE FOLLOWING MINIMUM DIMENSIONS:
  - (i) LENGTH OF 5.7 METRES;
  - (ii) WIDTH OF 2.7 METRES; AND
  - (iii) THE MINIMUM WIDTH IN (II) MUST BE INCREASED BY 0.3 METRES FOR EACH SIDE OF THE PARKING SPACE THAT IS OBSTRUCTED.
- 2. AN ACCESSIBLE PARKING SPACE MUST HAVE THE FOLLOWING MINIMUM DIMENSIONS:
  - TYPE A:
    - (i) LENGTH OF 5.7 METRES;
    - (ii) WIDTH OF 3.65 METRES; AND
    - (iii) BARRIER-FREE PATH OF 1.5 METRES IN WIDTH.
  - TYPE B:
    - (i) LENGTH OF 5.7 METRES;
    - (ii) WIDTH OF 2.7 METRES; AND
    - (iii) BARRIER-FREE PATH OF 1.5 METRES IN WIDTH.
- 3. THE SIDE OF A PARKING SPACE IS OBSTRUCTED IF ANY PART OF A FIXED OBJECT SUCH AS A WALL, COLUMN, BOLLARD, FENCE OR PIPE IS SITUATED:
  - (i) WITHIN 0.3 METRES OF THE SIDE OF THE PARKING SPACE, MEASURED AT RIGHT ANGLES, AND
  - (ii) MORE THAN 1.15 METRE FROM THE FRONT OR REAR OF THE PARKING SPACE PROVIDED THE OBSTRUCTION PROJECTS NO MORE THAN 0.15M INTO THE PARKING SPACE

COLUMN/WALL-MOUNTED CONVEX MIRROR (TYP.)

18.3 m2 197.5 #2

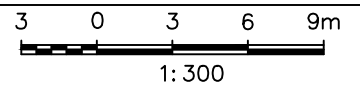
DRAWN BY: H.S. PLOT DATE: March 13, 2023

LEA Consulting Ltd.  
Consulting Engineers  
and Planners  
www.LEA.ca



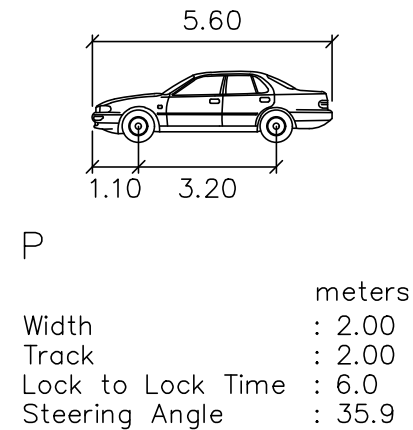
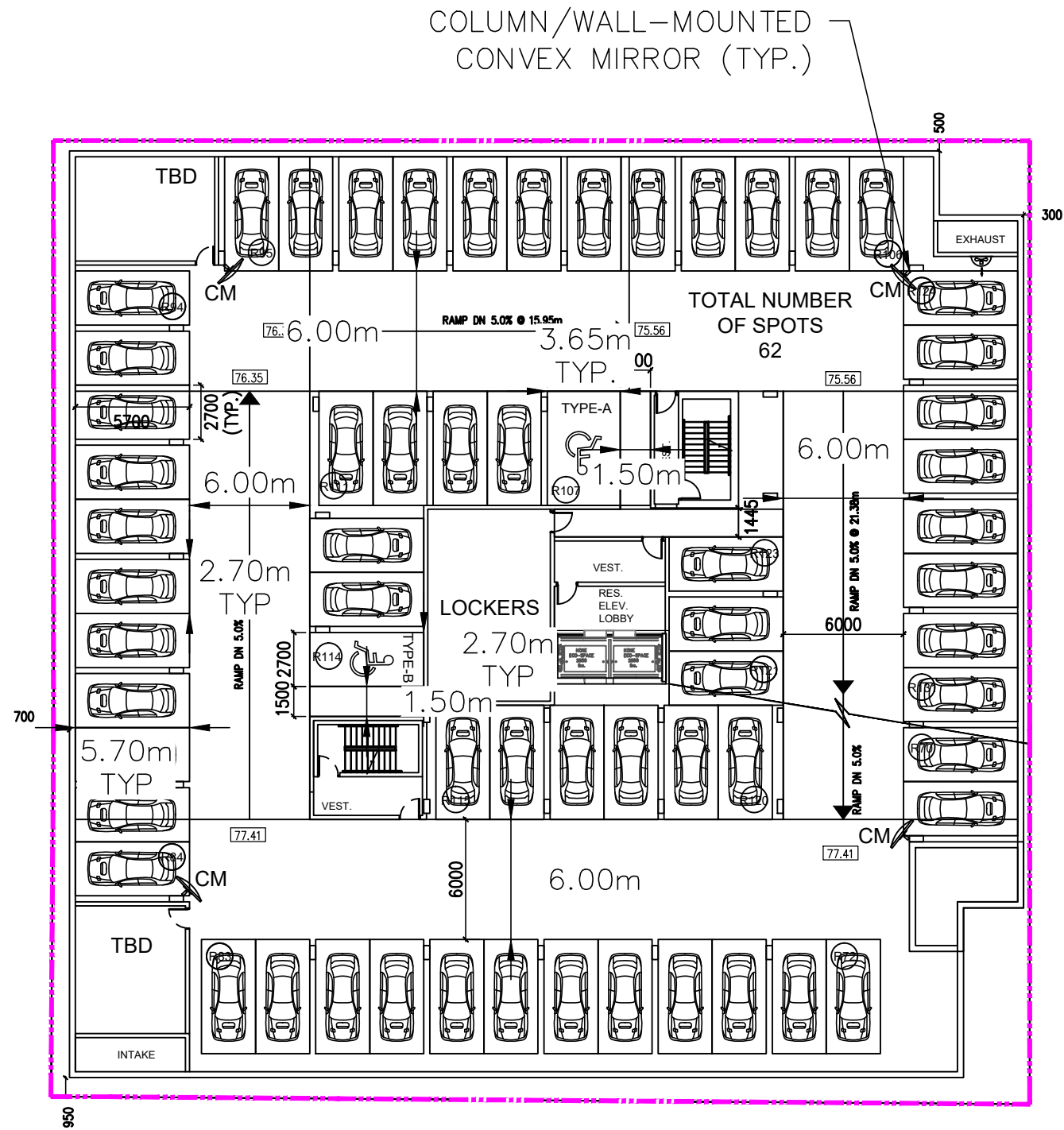
Project No.  
23129  
Date  
AUG 24, 2023

42 LAKESHORE ROAD W  
OAKVILLE ONTARIO



PARKING REVIEW  
LEVEL P2  
SWEEP PATHS

Drawing No.  
005

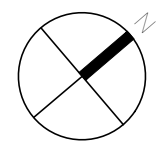


NOTES: TOWN OF OAKVILLE ZONING BY-LAW 2014-014:

- IF THE CENTRELINE OF A PARKING SPACE IS AT AN INTERIOR ANGLE OF 70 TO 90 DEGREES TO THE CENTRELINE OF THE DRIVE AISLE PROVIDING VEHICLE ACCESS, THE MINIMUM WIDTH FOR THAT ONE OR TWO LANE DRIVE AISLE IS 6.0 METRES.
- A PARKING SPACE MUST HAVE THE FOLLOWING MINIMUM DIMENSIONS:  
(i) LENGTH OF 5.7 METRES;  
(ii) WIDTH OF 2.7 METRES; AND  
(iii) THE MINIMUM WIDTH IN (ii) MUST BE INCREASED BY 0.3 METRES FOR EACH SIDE OF THE PARKING SPACE THAT IS OBSTRUCTED.
- AN ACCESSIBLE PARKING SPACE MUST HAVE THE FOLLOWING MINIMUM DIMENSIONS:  
TYPE A:  
(i) LENGTH OF 5.7 METRES;  
(ii) WIDTH OF 3.65 METRES; AND  
(iii) BARRIER-FREE PATH OF 1.5 METRES IN WIDTH.  
TYPE B:  
(i) LENGTH OF 5.7 METRES;  
(ii) WIDTH OF 2.7 METRES; AND  
(iii) BARRIER-FREE PATH OF 1.5 METRES IN WIDTH.
- THE SIDE OF A PARKING SPACE IS OBSTRUCTED IF ANY PART OF A FIXED OBJECT SUCH AS A WALL, COLUMN, BOLLARD, FENCE OR PIPE IS SITUATED:  
(i) WITHIN 0.3 METRES OF THE SIDE OF THE PARKING SPACE, MEASURED AT RIGHT ANGLES, AND  
(ii) MORE THAN 1.15 METRE FROM THE FRONT OR REAR OF THE PARKING SPACE PROVIDED THE OBSTRUCTION PROJECTS NO MORE THAN 0.15M INTO THE PARKING SPACE

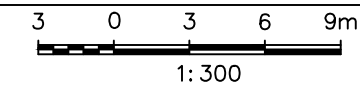
DRAWN BY: H.S. PLOT DATE: March 13, 2023

LEA Consulting Ltd.  
Consulting Engineers  
and Planners  
www.LEA.ca



Project No.  
23129  
Date  
AUG 24, 2023

42 LAKESHORE ROAD W  
OAKVILLE ONTARIO

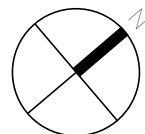


PARKING REVIEW  
LEVEL P3  
SWEEP PATHS

Drawing No.  
006

DRAWN BY: H.S. PLOT DATE: March 13, 2023

LEA Consulting Ltd.  
Consulting Engineers  
and Planners  
www.LEA.ca



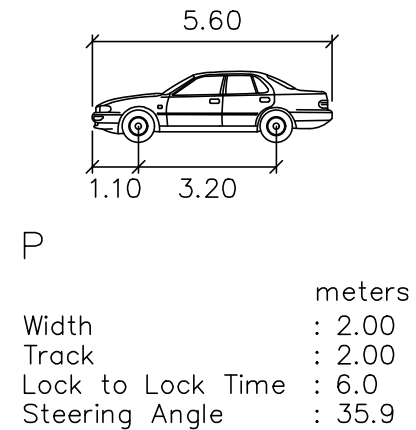
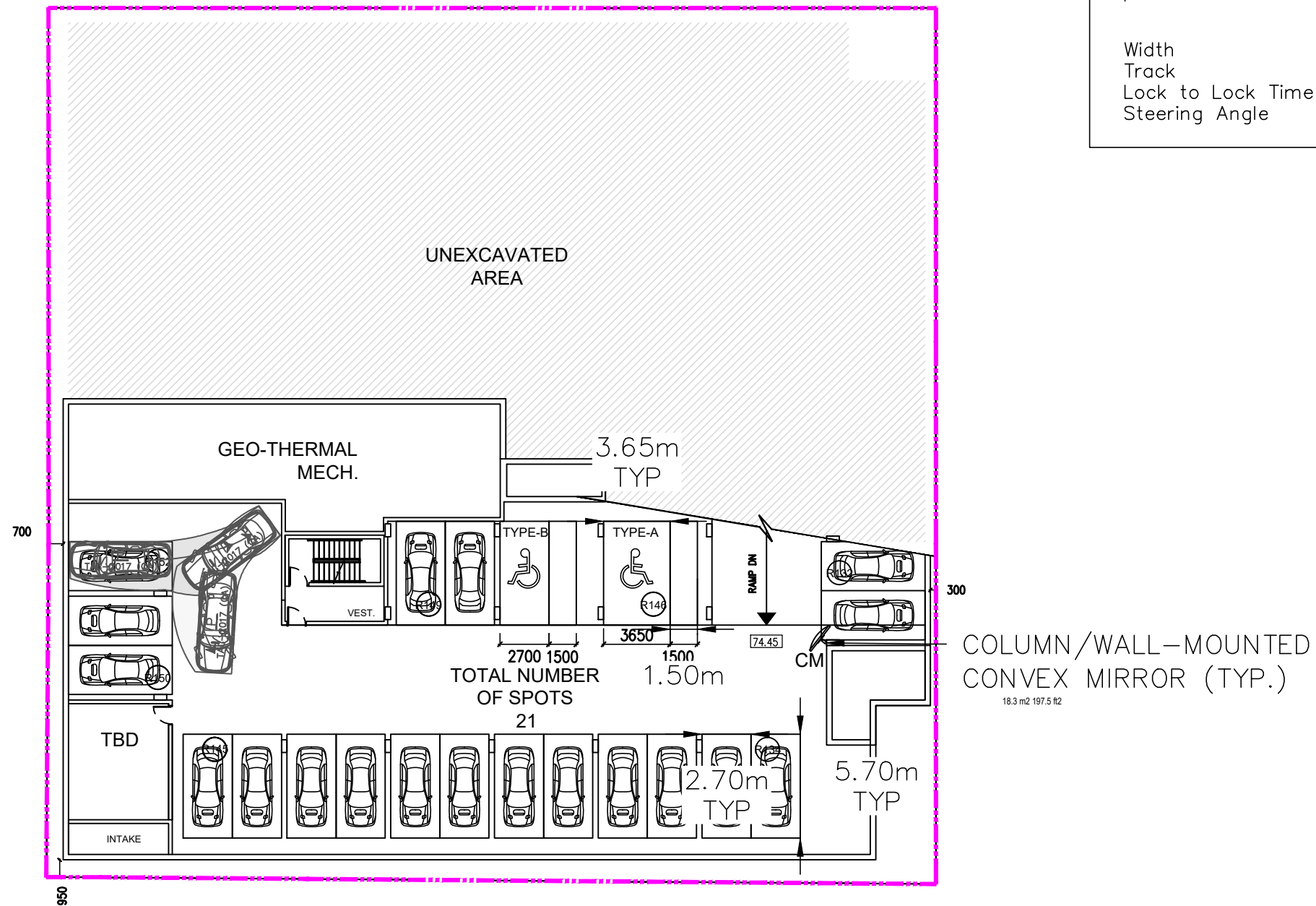
Project No.  
23129  
Date  
AUG 24, 2023

42 LAKESHORE ROAD W  
OAKVILLE ONTARIO

3 0 3 6 9m  
1:300

PARKING REVIEW  
LEVEL P4  
SWEEP PATHS

Drawing No.  
007



NOTES: TOWN OF OAKVILLE ZONING BY-LAW 2014-014:

- IF THE CENTRELINE OF A PARKING SPACE IS AT AN INTERIOR ANGLE OF 70 TO 90 DEGREES TO THE CENTRELINE OF THE DRIVE AISLE PROVIDING VEHICLE ACCESS, THE MINIMUM WIDTH FOR THAT ONE OR TWO LANE DRIVE AISLE IS 6.0 METRES.
- A PARKING SPACE MUST HAVE THE FOLLOWING MINIMUM DIMENSIONS:  
(i) LENGTH OF 5.7 METRES;  
(ii) WIDTH OF 2.7 METRES; AND  
(iii) THE MINIMUM WIDTH IN (ii) MUST BE INCREASED BY 0.3 METRES FOR EACH SIDE OF THE PARKING SPACE THAT IS OBSTRUCTED.
- AN ACCESSIBLE PARKING SPACE MUST HAVE THE FOLLOWING MINIMUM DIMENSIONS:  
TYPE A:  
(i) LENGTH OF 5.7 METRES;  
(ii) WIDTH OF 3.65 METRES; AND  
(iii) BARRIER-FREE PATH OF 1.5 METRES IN WIDTH.  
TYPE B:  
(i) LENGTH OF 5.7 METRES;  
(ii) WIDTH OF 2.7 METRES; AND  
(iii) BARRIER-FREE PATH OF 1.5 METRES IN WIDTH.
- THE SIDE OF A PARKING SPACE IS OBSTRUCTED IF ANY PART OF A FIXED OBJECT SUCH AS A WALL, COLUMN, BOLLARD, FENCE OR PIPE IS SITUATED:  
(i) WITHIN 0.3 METRES OF THE SIDE OF THE PARKING SPACE, MEASURED AT RIGHT ANGLES, AND  
(ii) MORE THAN 1.15 METRE FROM THE FRONT OR REAR OF THE PARKING SPACE PROVIDED THE OBSTRUCTION PROJECTS NO MORE THAN 0.15M INTO THE PARKING SPACE