

BIRD FRIENDLY TREATMENT
 LOW REFLECTANCE GLAZED MATERIALS
 VISUAL MARKERS APPLIED TO GLASS WITH A MAXIMUM SPACING OF 100MM x 100MM
 BUILDING INTEGRATED STRUCTURES TO AVOID REFLECTIONS ON GLASS SURFACES

- MATERIAL LEGEND**
- ① GLASS
 - ② SPANDREL PANEL
 - ③ LEUWER
 - ④ METAL PANEL
 - ⑤ BRICK

This drawing, as an instrument of service, is provided by and is the property of Graziani + Corazza Architects Inc. The contractor must verify and accept responsibility for all dimensions and conditions on site and must notify Graziani + Corazza Architects Inc. of any variations from the supplied information. Graziani + Corazza Architects Inc. is not responsible for the accuracy of survey, structural, mechanical, electrical, etc., engineering information shown on this drawing. Refer to the appropriate engineering drawings before proceeding with the work. Construction must conform to all applicable codes and requirements of the authorities having jurisdiction. Unless otherwise noted, no investigation has been undertaken or reported on by this office in regards to the environmental condition of this site.

This drawing is not to be scaled. All architectural symbols indicated on this drawing are graphic representations only.

Conditions for electronic information transfer

Electronic information is supplied to the other associated firms to assist them in the execution of their work/phase. The recipient firms must determine the completeness/appropriateness/relevance of the information in respect to their particular responsibility.

Graziani + Corazza Architects Inc. shall not be responsible for:

- Errors, omissions, incompleteness due to loss of information in whole or part when information is transferred.
- Transmission of any virus or damage to the receiving electronic system when information is transferred.

- NOV.02.2022 ISSUED FOR SPA J. CHL
- JULY.07.2023 ISSUED FOR SPA J. CHL
- OCT.19.2023 ISSUED FOR SPA J. CHL



SOUTH ELEVATION



NORTH ELEVATION

issued for revisions

GRAZIANI + CORAZZA ARCHITECTS INC.

JOHNNY CHIMENTI
 LICENCE 6299

8400 JANE ST. BUILDING D SUITE 300 CONCORD, ONTARIO L4K 4L8
 T.905.795.2601 F.905.795.2844 WWW.GC-ARCHITECTS.COM

PROPOSED DEVELOPMENT

455-465 DUNDAS STREET WEST

RIONE DEVELOPMENT CORP. ONTARIO

Project Architect: J. Chimenti
 Assistant Designer: A. Hassan / B. Doggostar
 Drawn By: B. Doggostar
 Checked By: D. Biase
 Plot Date: OCT.19.2023
 Job #: 1944.21

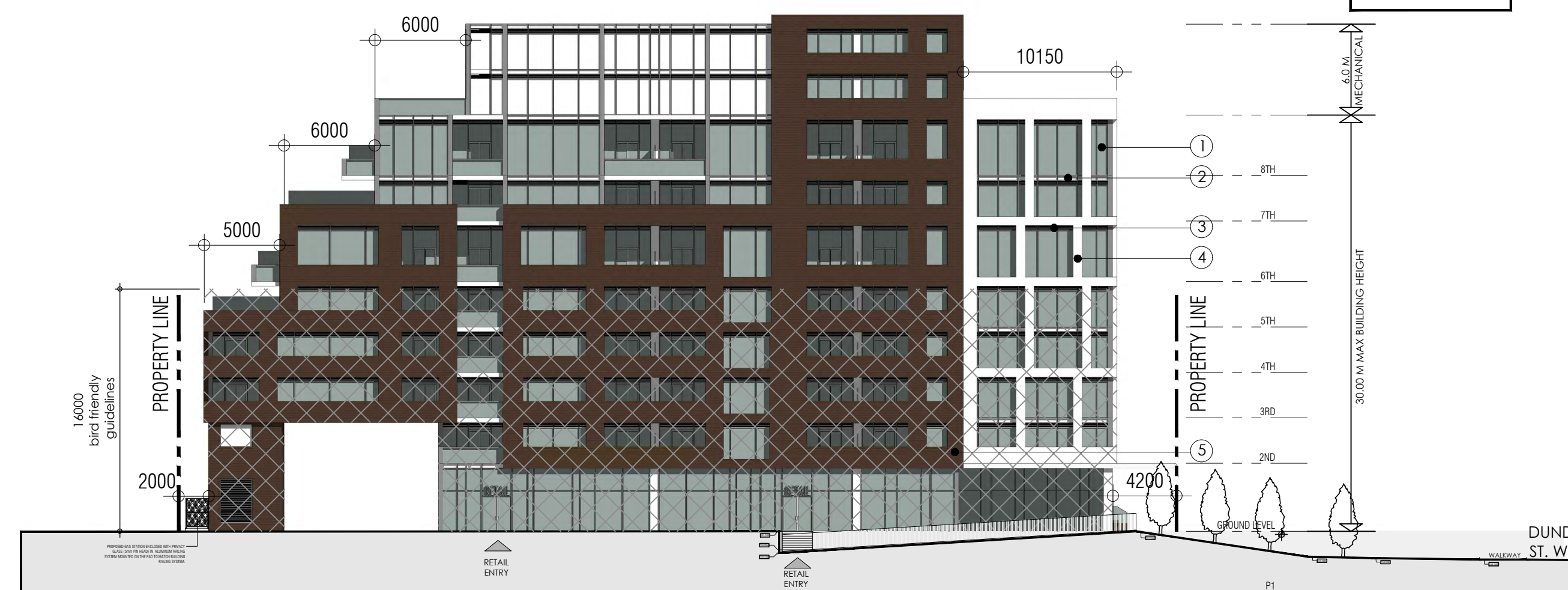
NORTH & SOUTH ELEVATIONS

1:300 A401

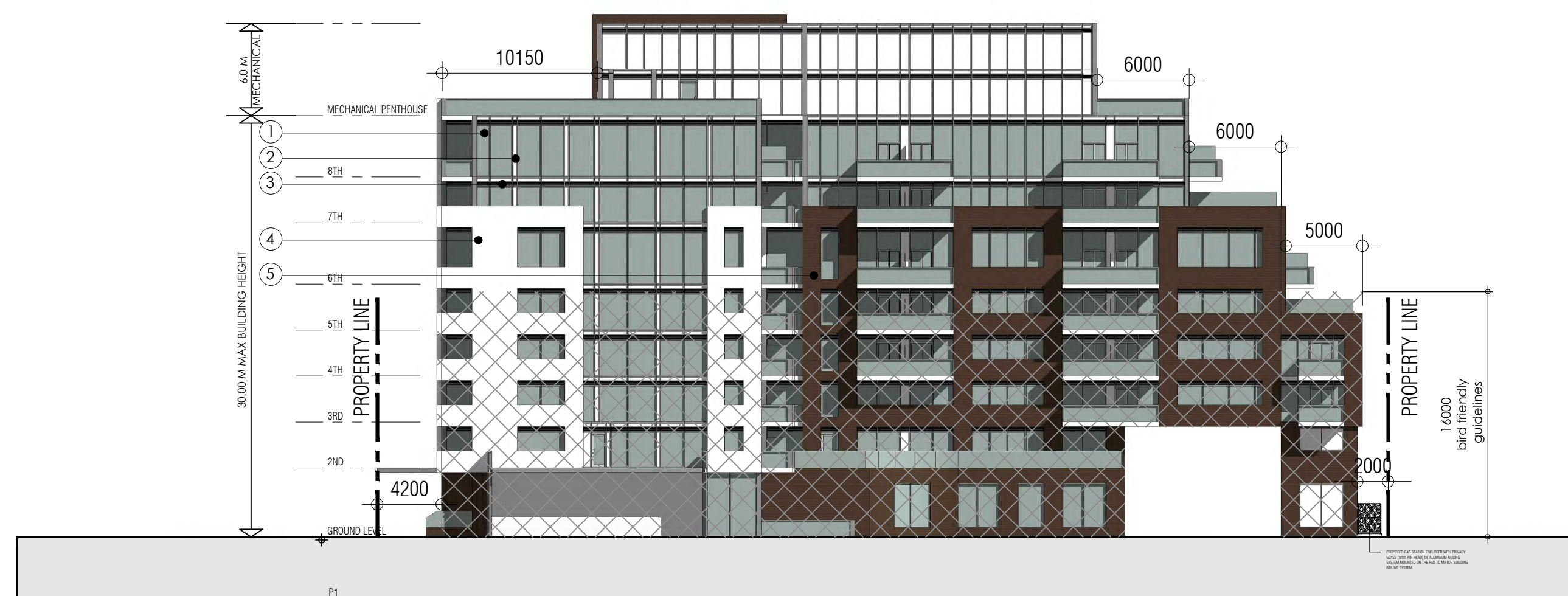
TITLEBLOCK SIZE: 610 x 900



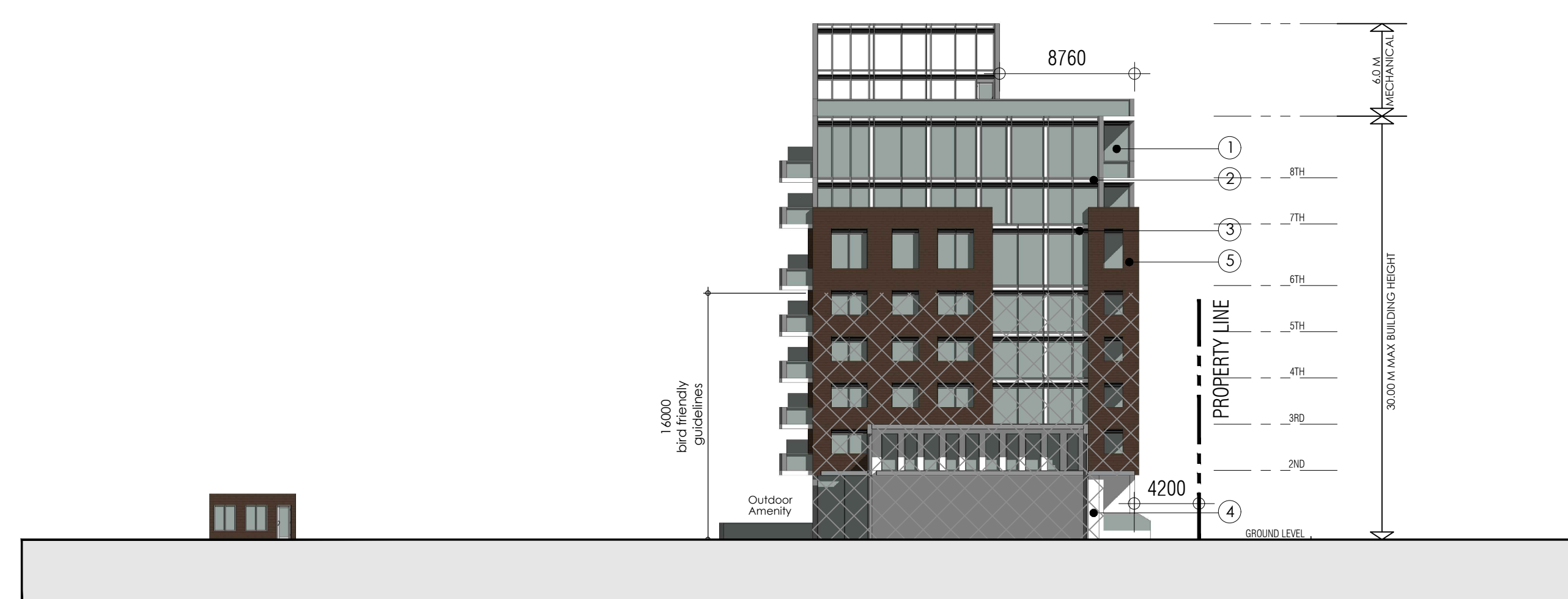
EAST ELEVATION



WEST ELEVATION



EAST ELEVATION - BUILDING A



WEST ELEVATION - BUILDING B

BIRD FRIENDLY TREATMENT

LOW REFLECTANCE SPANDREL MATERIALS
 VISUAL MARKERS APPLIED TO GLASS WITH A MAXIMUM SPACING OF 100MM x 100MM
 BUILDING INTEGRATED STRUCTURES TO MEET REFLECTING ON GLASS SURFACES

MATERIAL LEGEND

- ① GLASS
- ② SPANDREL PANEL
- ③ LEAFER
- ④ RETAIL PANEL
- ⑤ BRICK

This drawing, as an instrument of service, is provided by and is the property of Graziani + Corazza Architects Inc. The contractor must verify and accept responsibility for all dimensions and conditions on site and must notify Graziani + Corazza Architects Inc. of any variations from the supplied information. Graziani + Corazza Architects Inc. is not responsible for the accuracy of survey, structural, mechanical, electrical, etc., engineering information shown on this drawing. Refer to the appropriate engineering drawings before proceeding with the work. Construction must conform to all applicable codes and requirements of the authorities having jurisdiction. Unless otherwise noted, no investigation has been undertaken or reported on by this office in regards to the environmental condition of this site.

This drawing is not to be scaled. All architectural symbols indicated on this drawing are graphic representations only.

Conditions for electronic information transfer

Electronic information is supplied to the other associated firms to assist them in the execution of their work/review. The recipient firms must determine the completeness/appropriateness/relevance of the information in respect to their particular responsibility.

Graziani + Corazza Architects Inc. shall not be responsible for:

- Errors, omissions, incompleteness due to loss of information in whole or part when information is transferred.
- Transmission of any virus or damage to the receiving electronic system when information is transferred.

- NOV.02.2022 ISSUED FOR SPA J. CHL
- JULY.07.2023 ISSUED FOR SPA J. CHL
- OCT.19.2023 ISSUED FOR SPA J. CHL

issued for revisions

GRAZIANI + CORAZZA ARCHITECTS INC.

ONTARIO ASSOCIATION OF ARCHITECTS

JOHNNY CHIMIENTI LICENCE 6299

8400 JANE ST. BUILDING D SUITE 300 CONCORD, ONTARIO L4K 4L8
 T.905.795.2844 F.905.795.2844 WWW.GC-ARCHITECTS.COM

PROPOSED DEVELOPMENT

455-465 DUNDAS STREET WEST

RIONE DEVELOPMENT CORP. ONTARIO

Project Architect: J. Chimienti
 Assistant Designer: A. Hassan / B. Daggostar
 Drawn By: B. Daggostar
 Checked By: D. Blase
 Plot Date: OCT.19.2023
 Job #: 1944.21

WEST & EAST ELEVATIONS



AERIAL VIEW LOOKING NORTH EAST



AERIAL VIEW LOOKING NORTH WEST



AERIAL VIEW LOOKING SOUTH EAST



AERIAL VIEW LOOKING SOUTH WEST

This drawing, as an instrument of service, is provided by and is the property of Graziani + Corazza Architects Inc. The contractor must verify and accept responsibility for all dimensions and conditions on site and must notify Graziani + Corazza Architects Inc. of any variations from the supplied information. Graziani + Corazza Architects Inc. is not responsible for the accuracy of survey, structural, mechanical, electrical, etc., engineering information shown on this drawing. Refer to the appropriate engineering drawings before proceeding with the work. Construction must conform to all applicable codes and requirements of the authorities having jurisdiction. Unless otherwise noted, no investigation has been undertaken or reported on by this office in regards to the environmental condition of this site.

This drawing is not to be scaled. All architectural symbols indicated on this drawing are graphic representations only.

Conditions for electronic information transfer

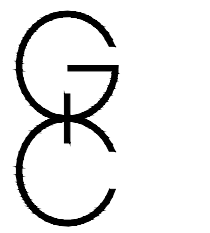
Electronic information is supplied to the other associated firms to assist them in the execution of their work/phase. The recipient firms must determine the completeness/appropriateness/relevance of the information in respect to their particular responsibility.

Graziani + Corazza Architects Inc. shall not be responsible for:

1. Errors, omissions, incompleteness due to loss of information in whole or part when information is transferred.
2. Transmission of any virus or damage to the receiving electronic system when information is transferred.


- | | | | |
|----|--------------|----------------|--------|
| 1. | NOV.02.2022 | ISSUED FOR SPA | J. CHL |
| 2. | JULY.07.2023 | ISSUED FOR SPA | J. CHL |
| 3. | OCT.19.2023 | ISSUED FOR SPA | J. CHL |

issued for revisions



ONTARIO ASSOCIATION
OF
ARCHITECTS

JOHNNY CHIMIENTI
LICENCE
6299



GRAZIANI + CORAZZA ARCHITECTS INC.

8400 JANE ST. BUILDING D SUITE 300 CONCORD, ONTARIO L4K 4L8
T.905.795.2801 F.905.795.2844 WWW.GC-ARCHITECTS.COM

PROPOSED DEVELOPMENT

455-465 DUNDAS STREET WEST

RIONE DEVELOPMENT CORP. ONTARIO

OAKVILLE

Project Architect: J. Chimienti
Assistant Designer: A. Hassan / B. Dadgostar
Drawn By: B. Dadgostar
Checked By: D. Biase
Plot Date: OCT.19.2023
Job #: 1944.21

AERIAL VIEWS

N.T.S. **A601**