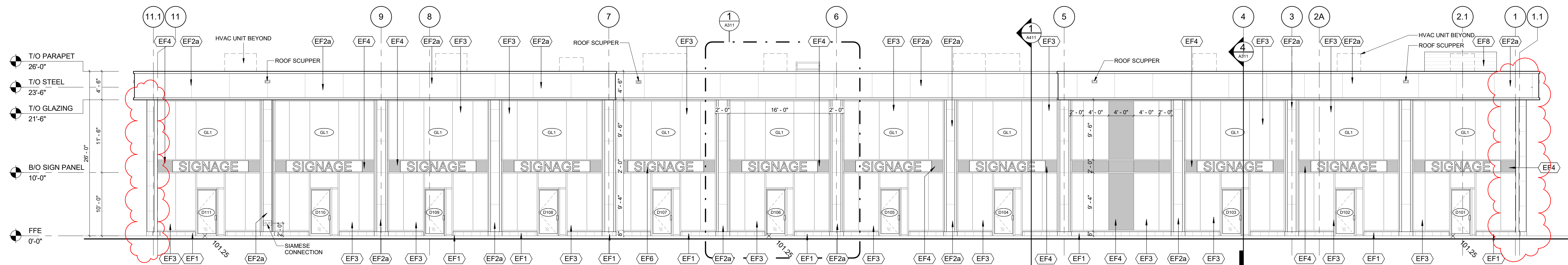
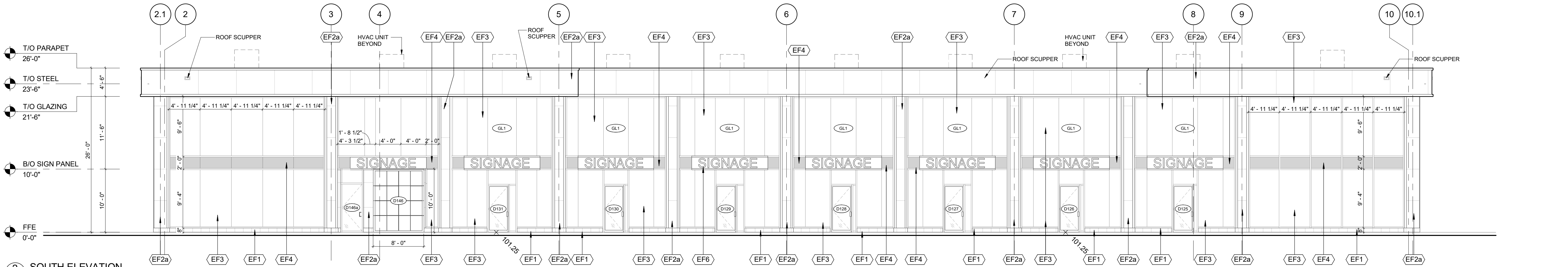


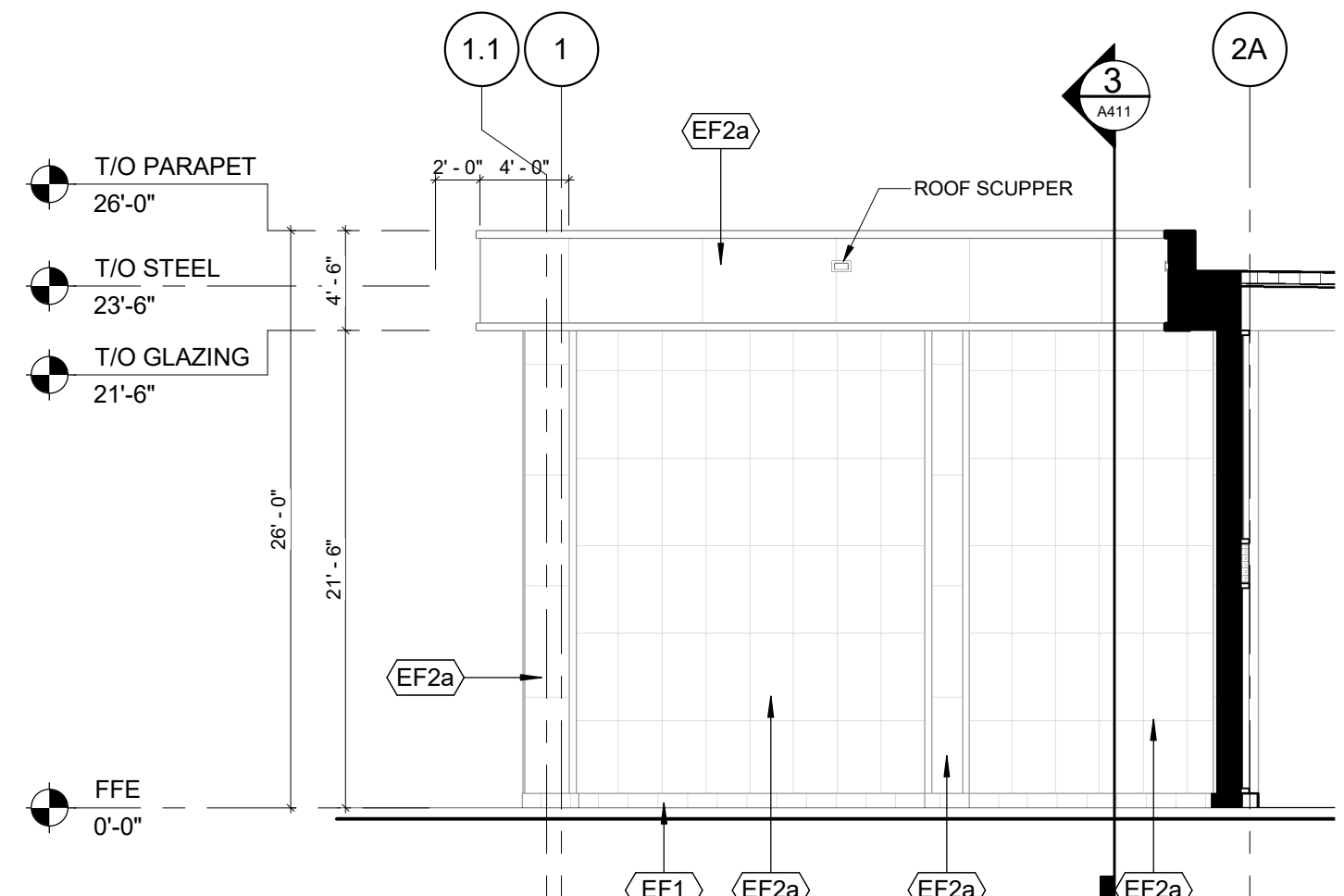
This drawing, as an instrument of service, is provided by and is the property of Turner Fleischer Architects Inc. The contractor must verify and accept responsibility for all dimensions and conditions on site and must notify Turner Fleischer Architects Inc. of any variations from the supplied information. This drawing is not to be scaled. The architect is not responsible for the accuracy of survey, structural, mechanical, electrical, etc. information shown on this drawing. Refer to the appropriate contract documents before proceeding with the work. Contractor must conform to all applicable codes and requirements of applicable building jurisdiction. The contractor working from drawings not specifically marked for Contractor must assume full responsibility and bear costs for any corrections or damages resulting from his work.



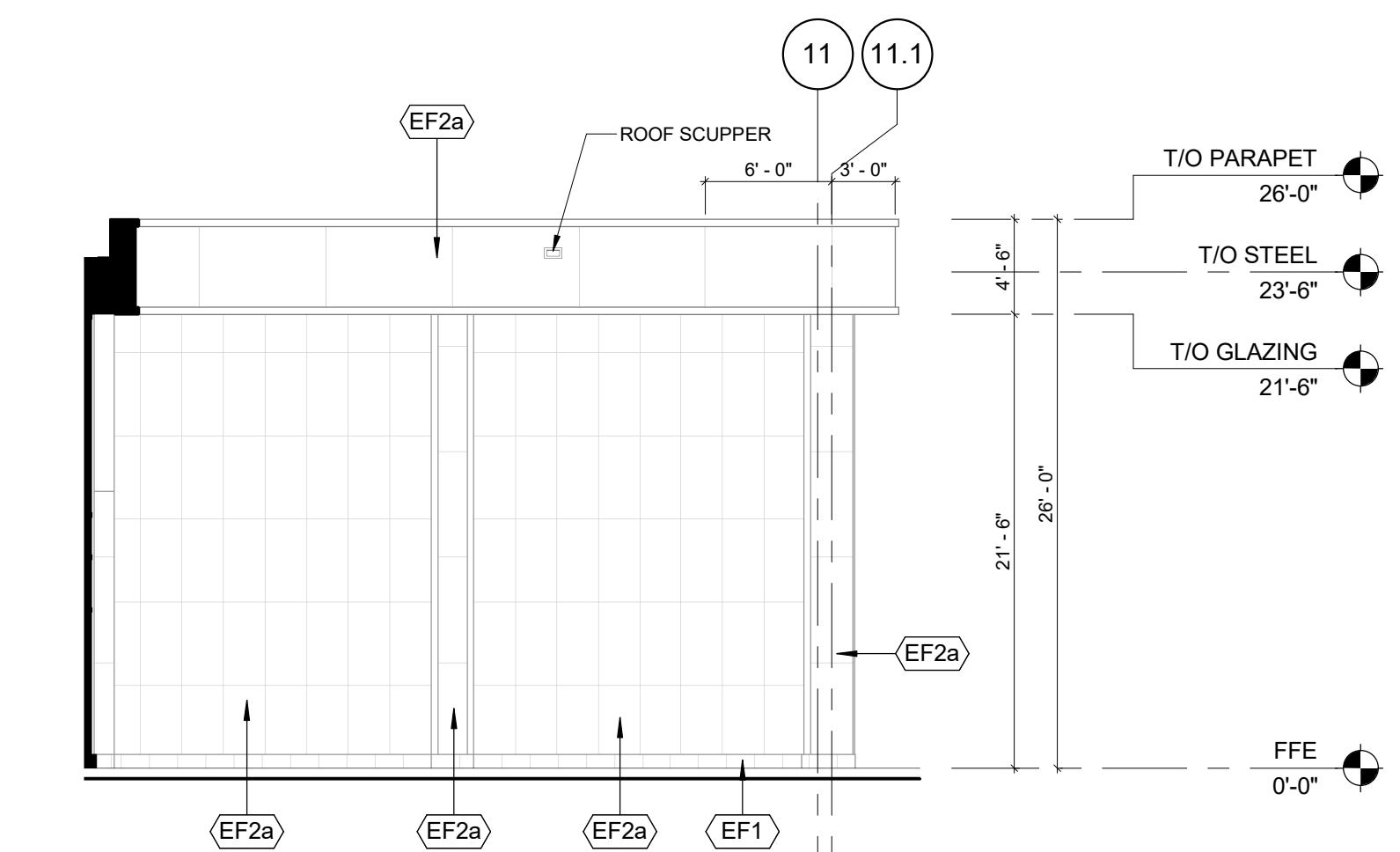
1 NORTH ELEVATION  
 A301 1/8" = 1'-0"



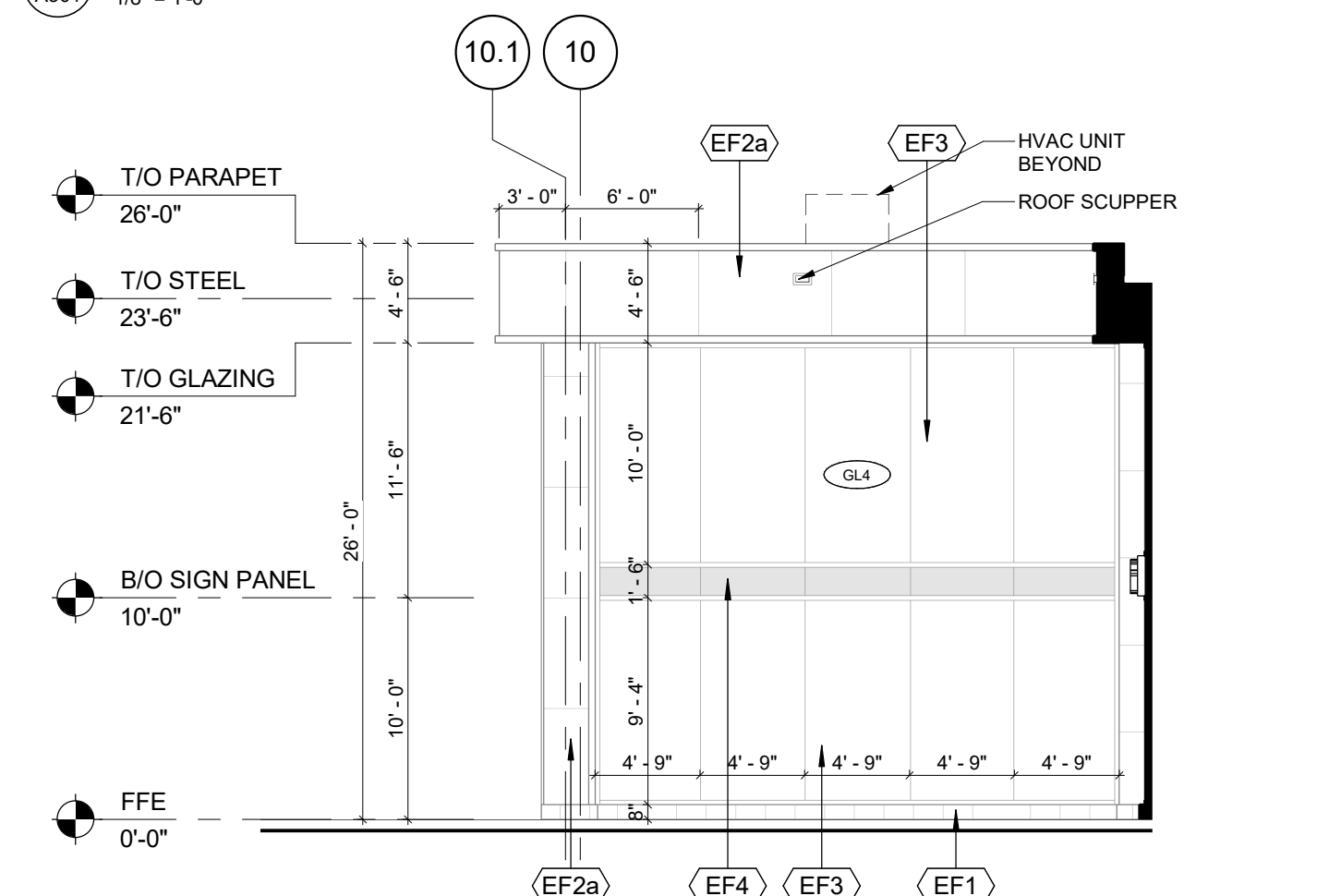
2 SOUTH ELEVATION  
 A301 1/8" = 1'-0"



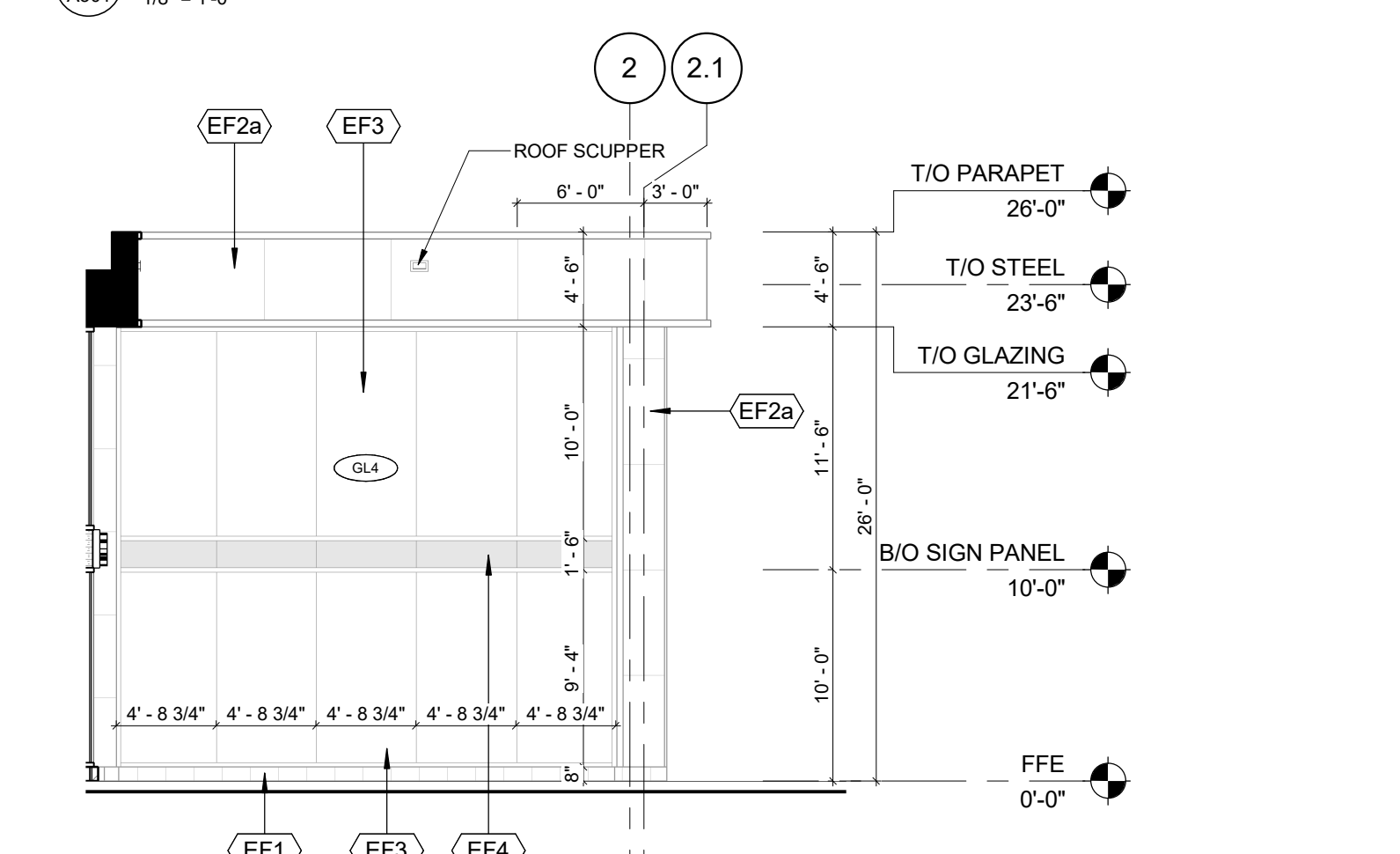
3 PARTIAL SOUTH ELEVATION A  
 A301 1/8" = 1'-0"



4 PARTIAL SOUTH ELEVATION B  
 A301 1/8" = 1'-0"



5 PARTIAL NORTH ELEVATION A  
 A301 1/8" = 1'-0"



6 PARTIAL NORTH ELEVATION B  
 A301 1/8" = 1'-0"

NOTE  
 BIRD FRIENDLY TREATMENT TO BE APPLIED TO ALL GLAZING

EXTERIOR FINISH SCHEDULE	
EF1	<b>CONCRETE BLOCK:</b> PRODUCT: SHOULDICE ARCH BLOCK SIZE: 190 X 390 COLOUR: COLBY FINISH: TAPESTRY MORTAR: SEE MANUFACTURER'S STANDARD SPECIFICATIONS CONTROL JOINT AND CAULKING COLOURS TO MATCH MASONRY UNIT COLOUR.
EF2a	<b>ALUMINUM COMPOSITE PANELS:</b> PRODUCT: ALPOLIC SIZE: SEE ELEVATIONS C/W MATCHING TRIMS/FLASHING COLOUR: DARK BRONZE ANODIZED CONTRACTOR TO PROVIDE COLOUR/FINISH SAMPLE FOR OWNER APPROVAL PRIOR TO ORDERING OF MATERIALS
EF3	<b>GLAZED DOORS &amp; WINDOWS:</b> CLEAR LOW E GLAZING IN COLOUR: BLACK ANODIZED THERMALLY BROKEN ALUMINUM FRAMES
EF4	<b>SPANDREL GLAZED DOORS &amp; WINDOWS:</b> BLACK ANODIZED ALUMINUM FRAMES CLEAR GLASS UNIT WITH CUSTOM COLOUR COATING ON INBOARD SURFACE OF OUTERLITE (TEMPERED GLASS TO BE USED AT DOORS AND SIDELIGHTS) COLOUR: BLACK ANODIZED
EF5	<b>ACM CORNICE:</b> PRODUCT: ALPOLIC COLOUR: BRONZE CONTRACTOR TO PROVIDE COLOUR/FINISH SAMPLE FOR OWNER APPROVAL PRIOR TO ORDERING OF MATERIALS PROFILE: REFER TO DETAILS, ACM TO BE BENT TO SUIT
EF6	<b>EXTERIOR SIGNAGE &amp; PANEL:</b> SIGNAGE TO BE PROVIDED BY AND INSTALLED BY TENANT. G.C. TO INSTALL 5/8" PLYWOOD BACKING FOR FUTURE MOUNTING OF SIGNAGE. SIGNAGE CONDUIT ROUGH-OUTS TO BE COORDINATED WITH TENANT.
EF7	<b>LONGBOARD CLADDING:</b> PRODUCT: LONGBOARD ARCHITECTURAL PRODUCTS COLOUR: LIGHT CHERRY CONTRACTOR TO PROVIDE COLOUR/FINISH SAMPLE FOR OWNER/ARCHITECT APPROVAL PRIOR TO ORDERING OF MATERIALS PROFILE: 6" V-GROOVE PLANKS
EF8	<b>METAL SIDING HORIZONTAL:</b> PRODUCT: VICWEST 24 GA CL 6025-SR COLOUR: TBC CONTRACTOR TO PROVIDE COLOUR/FINISH SAMPLE FOR OWNER/ARCHITECT APPROVAL PRIOR TO ORDERING OF MATERIALS

#	DATE	DESCRIPTION	BY
11	2022-10-07	ISSUED FOR SPA RESUBMISSION #3	ACY
10	2022-10-07	ISSUED FOR CITY COMMENTS	ACY
9	2022-08-03	ISSUED FOR PERMIT	SKJ
8	2022-07-19	ISSUED FOR PTA #01R1	SKJ
7	2022-07-13	ISSUED FOR PTA #01	SKJ
6	2022-06-24	ISSUED FOR ADDENDUM #01	SKJ
5	2022-06-10	ISSUED FOR TENDER	YSK
4	2022-05-27	ISSUED FOR SPA RESUBMISSION #1	SKJ
3	2022-01-24	ISSUED FOR SPA SUBMISSION	YSK
2	2022-01-20	ISSUED FOR COORDINATION	YSK
1	2022-01-06	ISSUED FOR REVIEW	YSK



PROJECT  
**PROPOSED BUILDING**  
 530 SPEERS ROAD, OAKVILLE, ON

DRAWING  
**EXTERIOR ELEVATIONS**

PROJECT NO. 21-101SH	
PROJECT DATE 2021-12-10	
DRAWN BY YSK	
CHECKED BY GAH	
SCALE 1/8" = 1'-0"	
DRAWING NO. <b>A301</b>	REV <b>11</b>

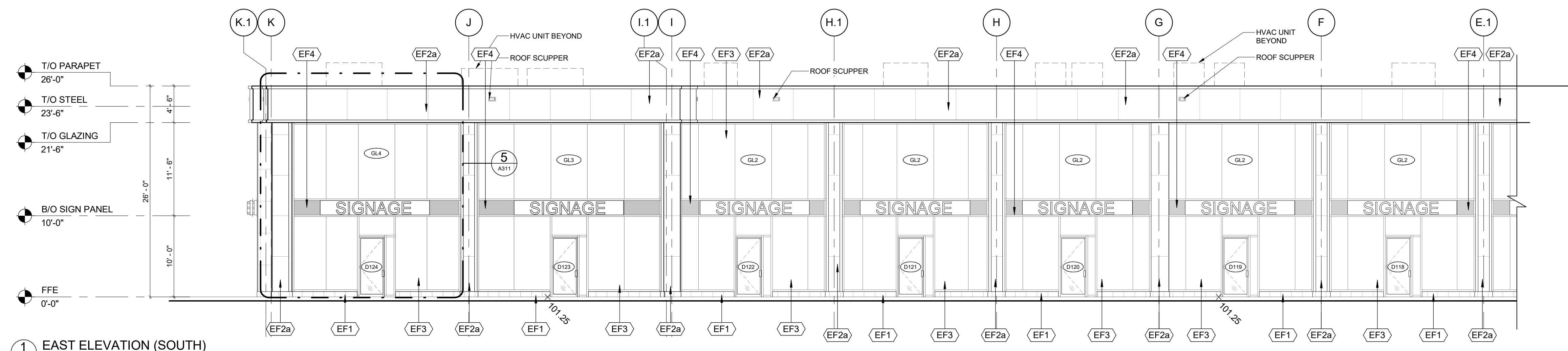
This drawing is an instrument of service, it is provided by and is the property of Turner Fleischer Architects Inc. The contractor must verify and accept responsibility for all dimensions and conditions on site and must notify Turner Fleischer Architects Inc. of any variations from the supplied information. This drawing is not to be scaled. The architect is not responsible for the accuracy of survey, structural, mechanical, electrical, etc. information shown on this drawing. Refer to the appropriate code and requirements of authority having jurisdiction. The contractor working from drawings not specifically marked for construction must assume full responsibility and bear costs for any corrections or damages resulting from his work.

NOTE

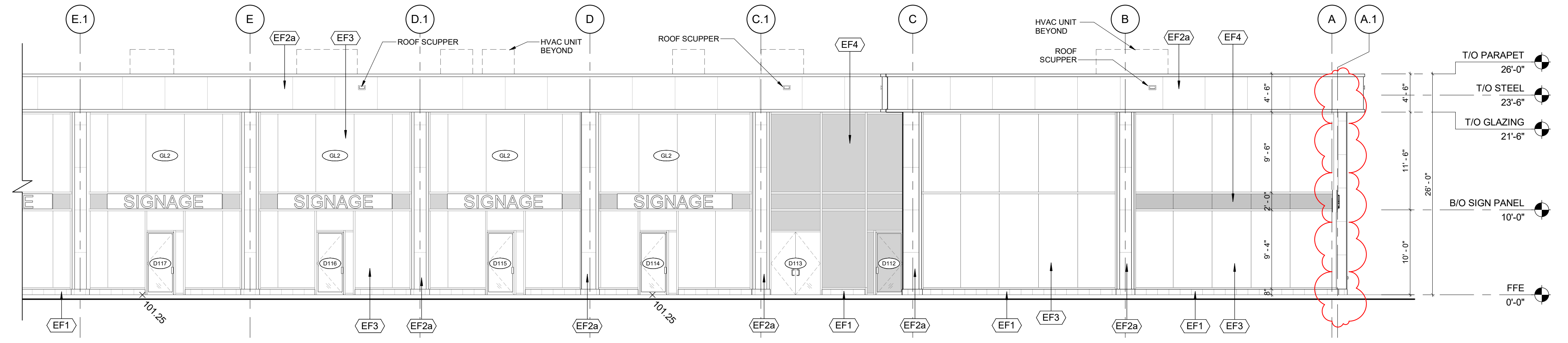
BIRD FRIENDLY TREATMENT TO BE APPLIED TO ALL GLAZING

EXTERIOR FINISH SCHEDULE

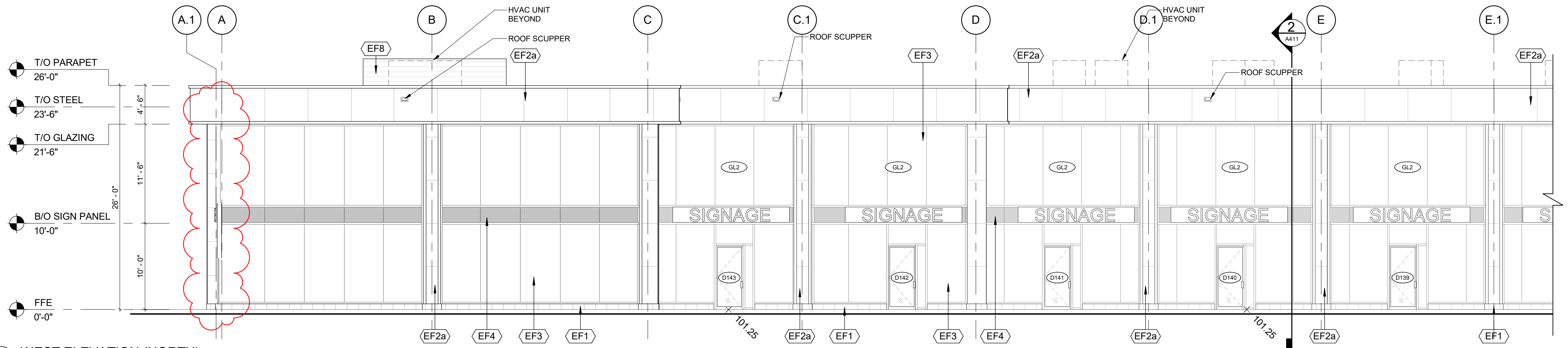
EF1	<b>CONCRETE BLOCK:</b> PRODUCT: SHOULDRICE ARCH BLOCK SIZE: 190 X 390 COLOUR: COLBY FINISH: TAPESTRY MORTAR: SEE MANUFACTURER'S STANDARD SPECIFICATIONS CONTROL JOINT AND CAULKING COLOURS TO MATCH MASONRY UNIT COLOUR.
EF2a	<b>ALUMINUM COMPOSITE PANELS:</b> PRODUCT: ALPOLIC SIZE: SEE ELEVATIONS C/W MATCHING TRIMS/FLASHING COLOUR: DARK BRONZE ANODIZED CONTRACTOR TO PROVIDE COLOUR/FINISH SAMPLE FOR OWNER APPROVAL PRIOR TO ORDERING OF MATERIALS
EF3	<b>GLAZED DOORS &amp; WINDOWS:</b> CLEAR LOW E GLAZING IN COLOUR: BLACK ANODIZED THERMALLY BROKEN ALUMINUM FRAMES
EF4	<b>SPANDREL GLAZED DOORS &amp; WINDOWS:</b> BLACK ANODIZED ALUMINUM FRAMES CLEAR GLASS UNIT WITH CUSTOM COLOUR COATING ON INBOARD SURFACE OF OUTERLITE (TEMPERED GLASS TO BE USED AT DOORS AND SIDELIGHTS) COLOUR: BLACK ANODIZED
EF5	<b>ACM CORNICE:</b> PRODUCT: ALPOLIC COLOUR: BRONZE CONTRACTOR TO PROVIDE COLOUR/FINISH SAMPLE FOR OWNER APPROVAL PRIOR TO ORDERING OF MATERIALS PROFILE: REFER TO DETAILS, ACM TO BE SENT TO SUIT
EF6	<b>EXTERIOR SIGNAGE &amp; PANEL:</b> SIGNAGE TO BE PROVIDED BY AND INSTALLED BY TENANT, G.C. TO INSTALL 5/8" PLYWOOD BACKING FOR FUTURE MOUNTING OF SIGNAGE. SIGNAGE CONDUIT ROUGH-OUTS TO BE COORDINATED WITH TENANT.
EF7	<b>LONGBOARD CLADDING:</b> PRODUCT: LONGBOARD ARCHITECTURAL PRODUCTS COLOUR: LIGHT CHERRY CONTRACTOR TO PROVIDE COLOUR/FINISH SAMPLE FOR OWNER/ARCHITECT APPROVAL PRIOR TO ORDERING OF MATERIALS PROFILE: 6" V-GROOVE PLANKS
EF8	<b>METAL SIDING HORIZONTAL:</b> PRODUCT: VIOWEST 24 GA CL 6025-SR COLOUR: TBC CONTRACTOR TO PROVIDE COLOUR/FINISH SAMPLE FOR OWNER/ARCHITECT APPROVAL PRIOR TO ORDERING OF MATERIALS



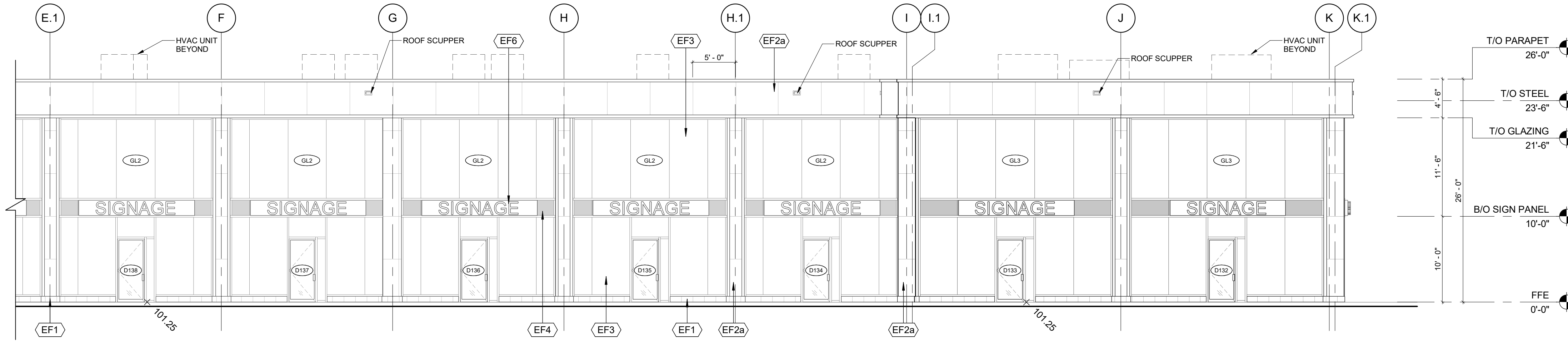
1 EAST ELEVATION (SOUTH)  
1/8" = 1'-0"



2 EAST ELEVATION (NORTH)  
1/8" = 1'-0"



3 WEST ELEVATION (NORTH)  
1/8" = 1'-0"



4 WEST ELEVATION (SOUTH)  
1/8" = 1'-0"

#	DATE	DESCRIPTION	BY
9	2022-10-07	ISSUED FOR SPA RESUBMISSION #3	ACY
7	2022-10-07	ISSUED FOR CITY COMMENTS	ACY
6	2022-07-19	ISSUED FOR PTA #01R1	SKJ
5	2022-07-13	ISSUED FOR PTA #01	SKJ
4	2022-06-24	ISSUED FOR ADDENDUM #01	SKJ
3	2022-06-10	ISSUED FOR TENDER	YSK
2	2022-06-07	ISSUED FOR SPA RESUBMISSION #1	SKJ
1	2022-05-21	ISSUED FOR COORDINATION	YSK



PROJECT  
**PROPOSED BUILDING**  
530 SPEERS ROAD, OAKVILLE, ON

DRAWING  
**EXTERIOR ELEVATIONS**

PROJECT NO:  
21-101SH  
PROJECT DATE:  
2021-12-10  
DRAWN BY:  
YSK  
CHECKED BY:  
GAH  
SCALE:  
1/8" = 1'-0"



DRAWING NO:  
**A302**  
REV:  
**8**