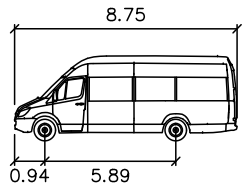


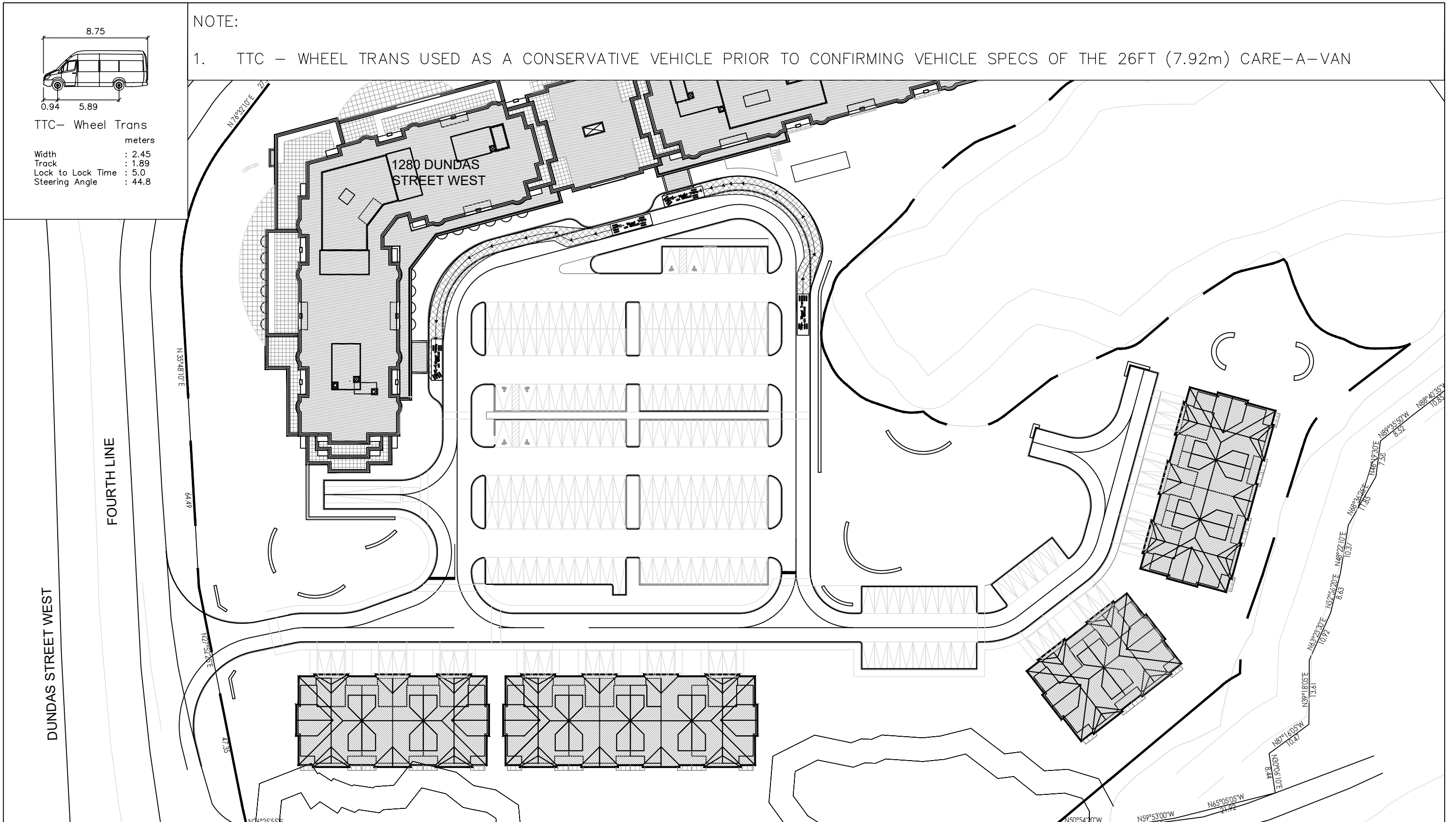
NOTE:

1. TTC – WHEEL TRANS USED AS A CONSERVATIVE VEHICLE PRIOR TO CONFIRMING VEHICLE SPECS OF THE 26FT (7.92m) CARE-A-VAN

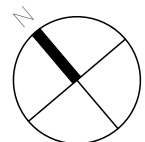


TTC- Wheel Trans

	meters
Width	: 2.45
Track	: 1.89
Lock to Lock Time	: 5.0
Steering Angle	: 44.8

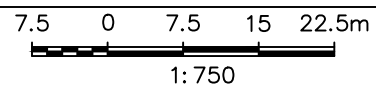


LEA Consulting Ltd.
Consulting Engineers
and Planners
www.LEA.ca



Project No.
20253-210
Date
DEC. 21, 2021

1280 DUNDAS STREET WEST
OAKVILLE ONTARIO



SITE PLAN
CIRCULAR LAY-BY REVIEW
SPECIALIZED TRANSIT PUDO
CARE-A-VAN

Drawing No.

004