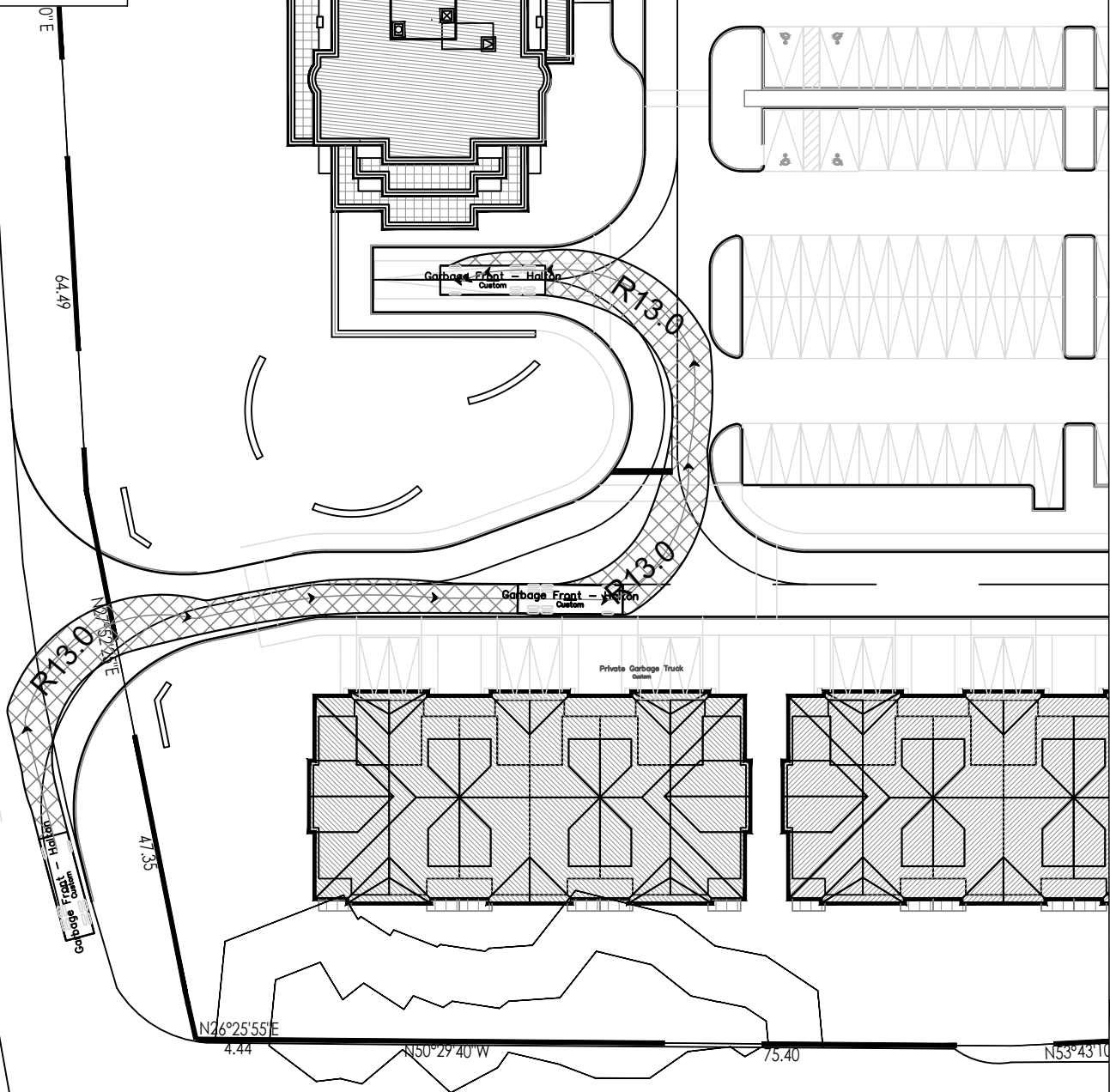


Garbage Front meters
 Width : 2.70
 Track : 2.70
 Lock to Lock Time : 6.0
 Steering Angle : 28.5

FORWARD IN
 REVERSE OUT

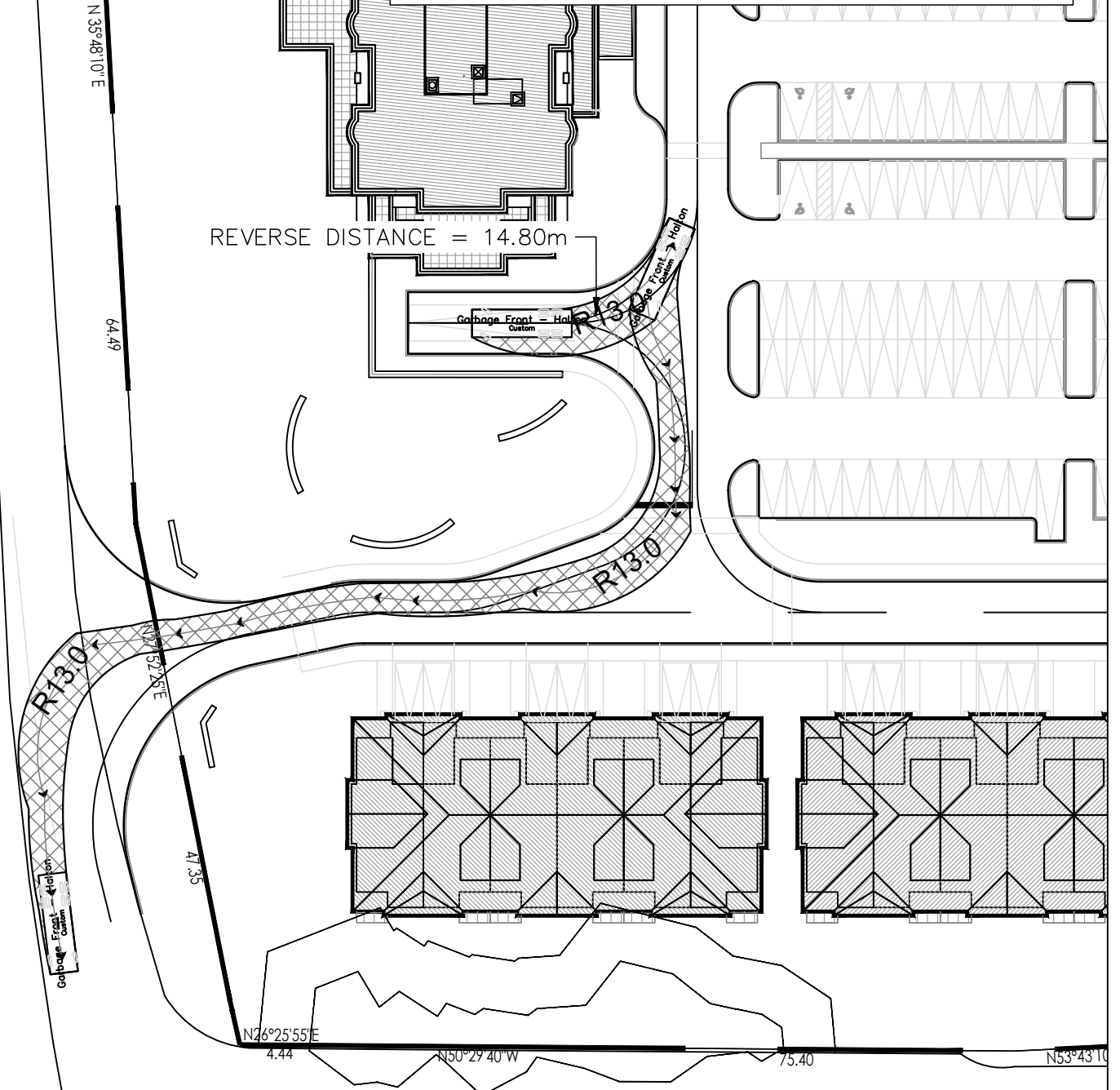
FOURTH LINE



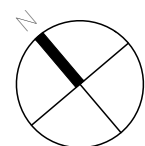
NOTES:

AS PER HALTON REGION DEVELOPMENT GUIDELINES FOR SOURCE SEPARATION OF SOLID WASTE:
 1. 1.10.2: T-TURNAROUND MAY BE PERMITTED IN ACCORDANCE WITH SPECIFICATIONS OUTLINED IN APPENDIX 3. WASTE COLLECTION VEHICLES ARE NOT EXPECTED TO BACK UP MORE THAN 18m (FROM FRONT WHEEL TO FRONT WHEEL)

FOURTH LINE

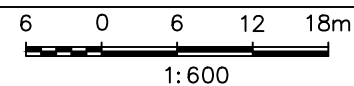


LEA Consulting Ltd.
 Consulting Engineers and Planners
 www.LEA.ca



Project No.
 20253-210
 Date
 DEC. 21, 2021

1280 DUNDAS STREET WEST
 OAKVILLE ONTARIO



SITE PLAN
 SERVICE LANE REVIEW
 CITY GARBAGE TRUCK
 ENTRY AND EXIT PATH

Drawing No.
 002