


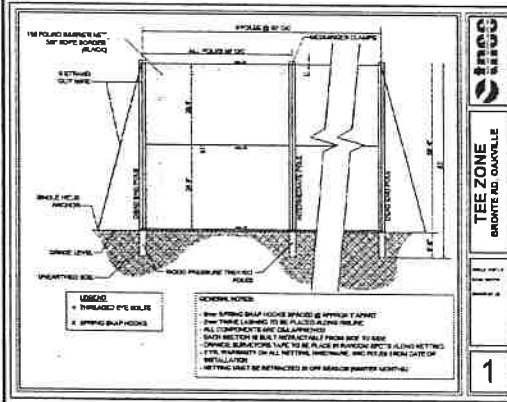
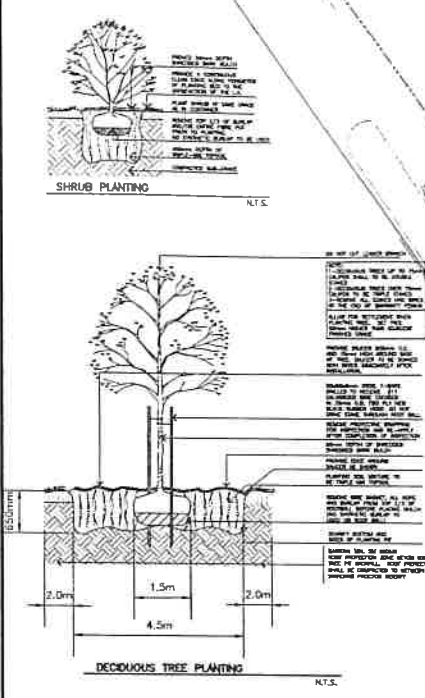
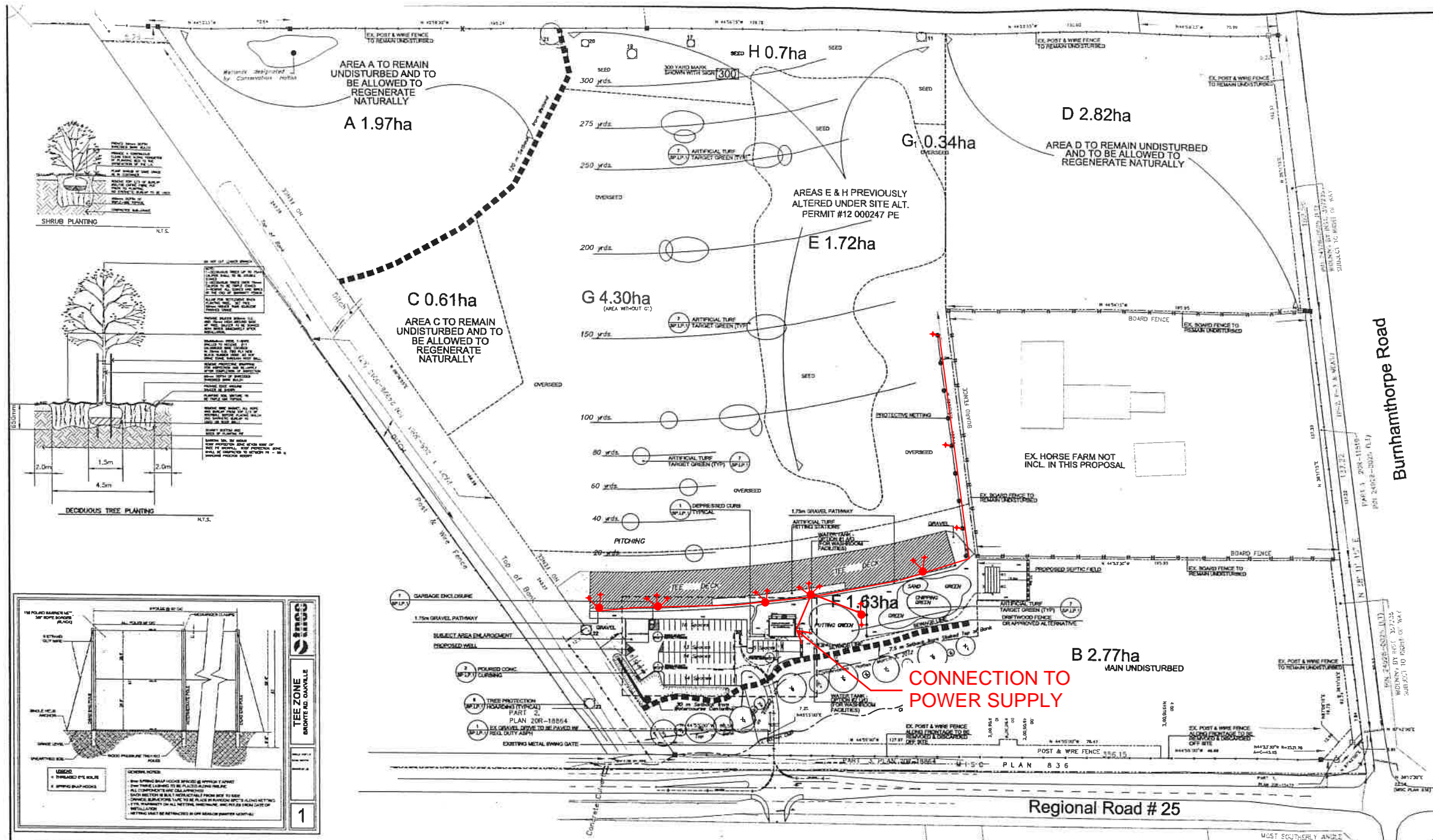


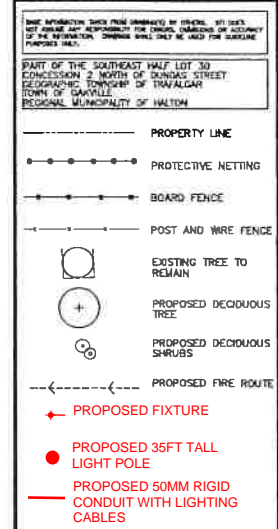
Legend

	PROPOSED FIXTURE
	PROPOSED 35FT TALL LIGHT POLE
	PROPOSED 50MM RIGID CONDUIT WITH LIGHTING CABLES

Site Plan of Tee Zone Driving Range
Date: November 21, 2023
Version: V1



KEY PLAN N.T.S.



NOV 21, 2023 LOCATION OF LIGHT POLES, FIXTURES, AND CONDUIT

MAR 1, 2013 REVIEW FOR CONDS HATCH & COVER

JAN 10, 2013 ISSUED FOR 2ND SITE PLAN APPLICATION CIRCULATION

JAN 12, 2012 ISSUED FOR 1ST SITE PLAN APPLICATION CIRCULATION

DATE DESCRIPTION CHECKED BY

REVISIONS

NOTE: Contractor to check and verify all dimensions and conditions on the project, and to immediately report any discrepancies to the landscape architect before proceeding with the work.

SOCIETY OF LANDSCAPE ARCHITECTS ONTARIO

BOT CONSTRUCTION

Salmona Tregunno INC. 3828 BRISTOL CIRCLE OAKVILLE, ONTARIO L6H 4Z7 TEL: 905.886.2844 FAX: 905.886.1885

DEVELOPMENT CONSULTANTS LANDSCAPE ARCHITECTS PRESCRIPTION PLANNERS LANDSCAPE ARCHITECTS ENVIRONMENTAL PLANNERS

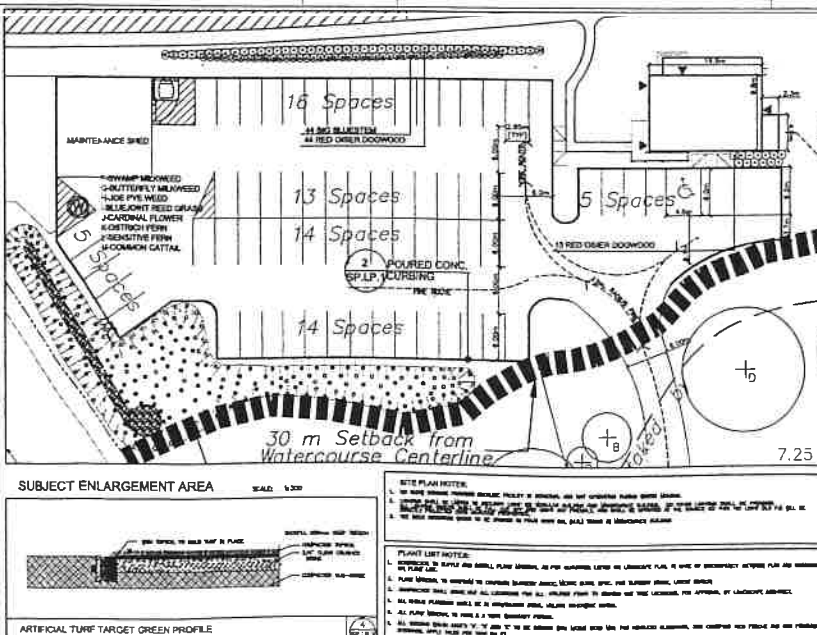
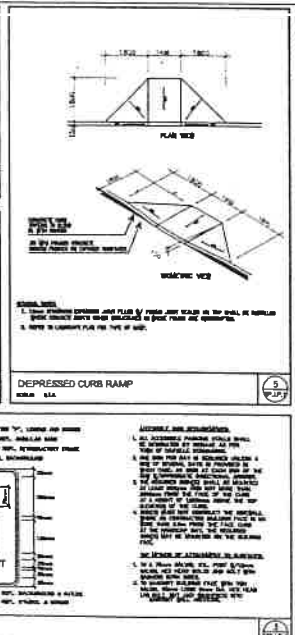
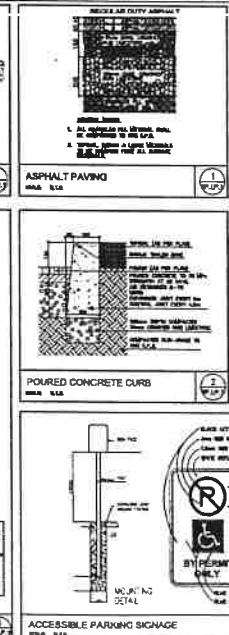
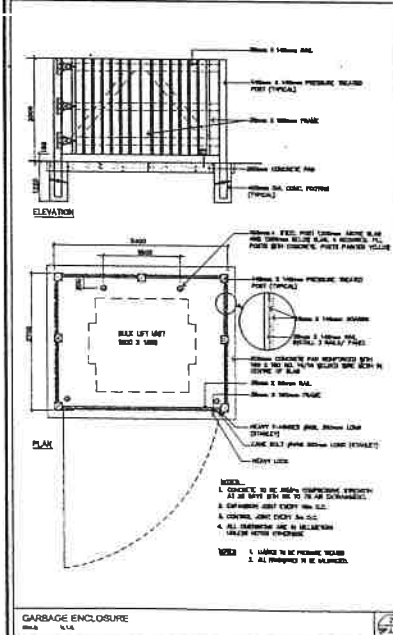
Project Name: TEE ZONE DRIVING RANGE & GOLF PRACTICE FACILITY 1488 REGIONAL RD 25 - OAKVILLE, ON

Sheet Description: SITE & LANDSCAPE PLAN SP, # 123.002/02

Date: JUN 12 2012

Scale: 1/1250

Sheet No: 13-169



Material Schedule Table

Item	Description	Quantity	Unit	Material
1	Asphalt Paving	1000	Sq. M	ASPHALT
2	Gravel Path	500	Sq. M	GRAVEL
3	Concrete Curb	100	M	CONCRETE
4	Artificial Turf	200	Sq. M	ARTIF. TURF
5	Planting	50	Each	PLANTS