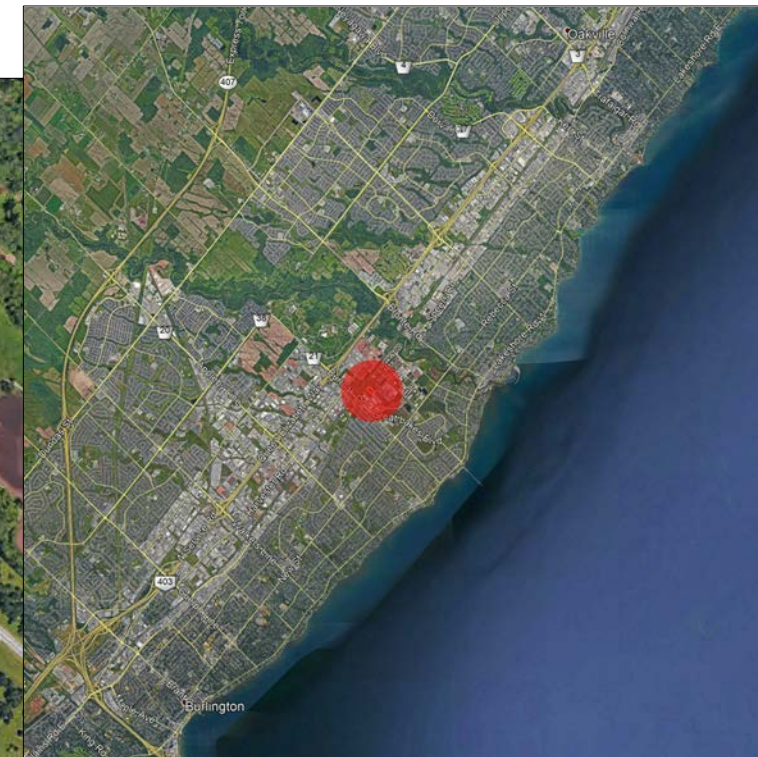


PRESENTATION R01 - SITE PLAN APPLICATION ACS SUPERIOR GRF

SUPERIOR COURT - OAKVILLE - ONTARIO



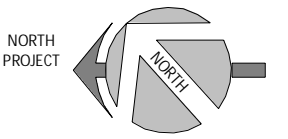
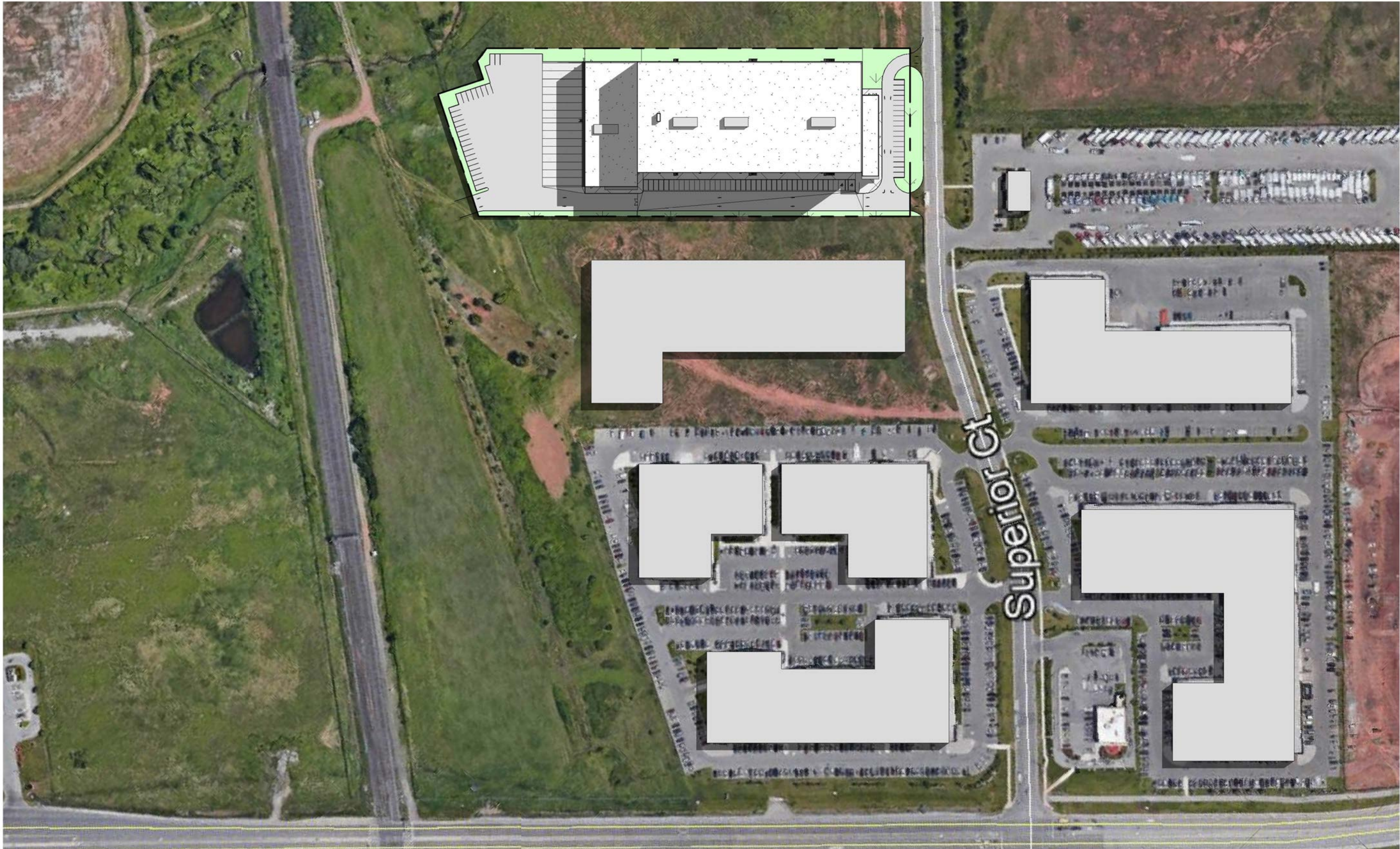


ACS SUPERIOR GRF

SUPERIOR COURT - OAKVILLE - ONTARIO

PRESENTATION R01 - SITE PLAN APPLICATION
LOCATION PLAN P100

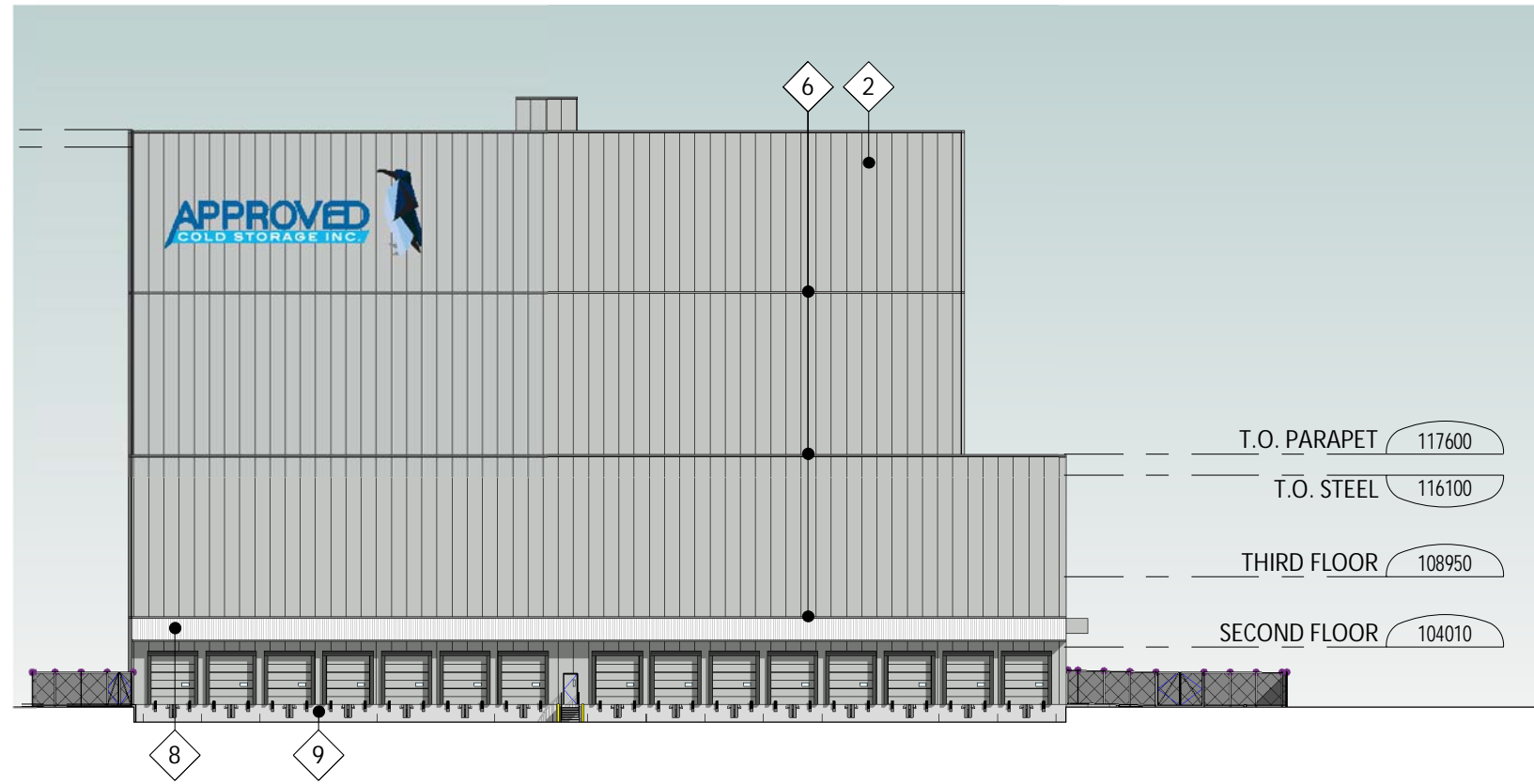
ISSUED FOR S.P.A R01 2021-08-16
FOLIO 21047



LEGEND OF FINISHES - EXTERIOR ELEVATIONS

1	KINGSPAN INSULATED METAL PANEL 42" MICRO-RIB FINISH, ASCOT WHITE COLOR		6	HORIZONTAL DECORATIVE METAL MOLDING, LIGHT GRAY COLOR	
2	KINGSPAN INSULATED METAL PANEL 42" MICRO-RIB FINISH, BRIGHT SILVER COLOR		7	KAWNEER CURTAIN WALL SYSTEM 2. LIGHT ANODIZED COLOR FINISH LIGHT GRAY THERMO GLASS	
3	DRI DESIGN ALUMINUM PANELS TAPERED SERIES SELECT SILVER COLOR		7A	TYMPAN KAWNEER CURTAIN WALL SYSTEM 2. LIGHT ANODIZED COLOR FINISH LIGHT GRAY THERMO GLASS	
4	1/8" THICK ALUMINUM PANEL. DURANAR XL FINISH, LIGHT GRAY COLOR MATCH WITH BRIGHT SILVER		8	CORRUGATED METAL LOADING DOCK CANOPY LIGHT GRAY COLOR	
5	1/8" THICK ALUMINUM PANEL. DURANAR XL FINISH, WHITE COLOR MATCH WITH ASCOT WHITE		9	EXPOSED CONCRETE FOUNDATION WALL	

140390 T.O. PARAPET HIGH ROOF
 139190 T.O. STEEL AT HIGH ROOF

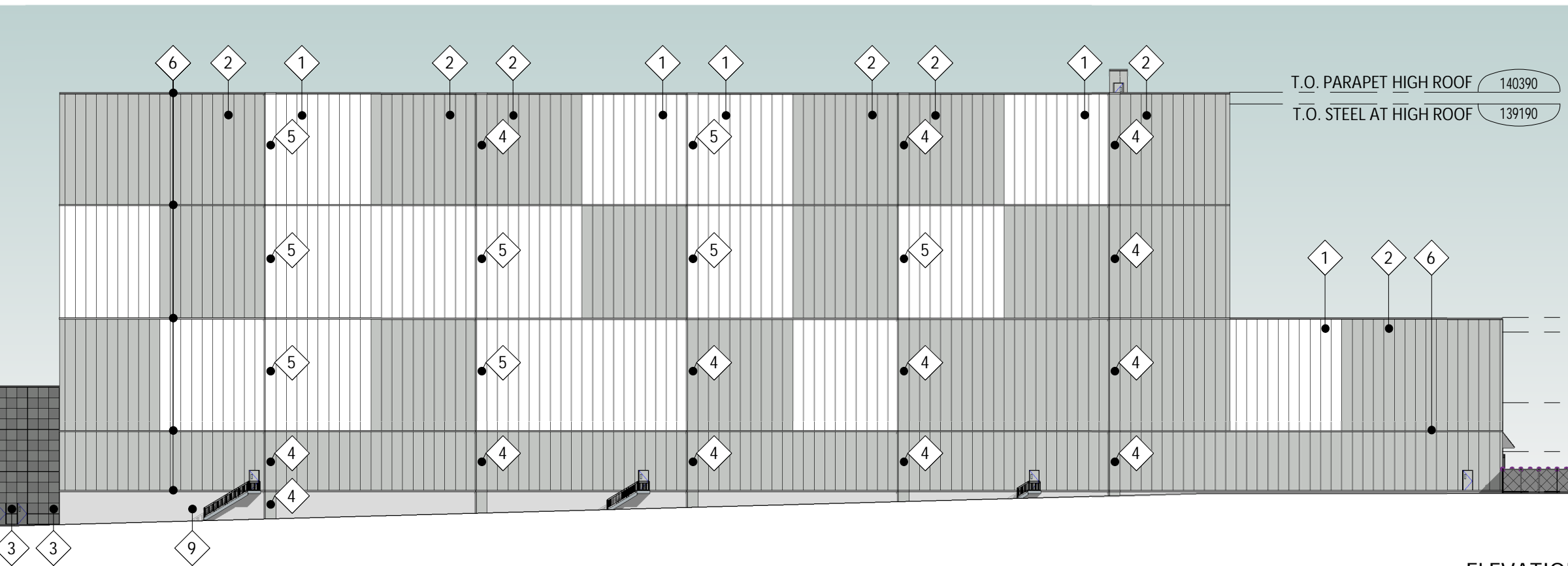


T.O. PARAPET 117600
 T.O. STEEL 116100
 THIRD FLOOR 108950
 SECOND FLOOR 104010

100000 GROUND FLOOR
 99848 SITE

ELEVATION NORTH 1
 1: 500 P410

110721 T.O. PARAPET OFFICES
 110111 T.O. STEEL OFFICES

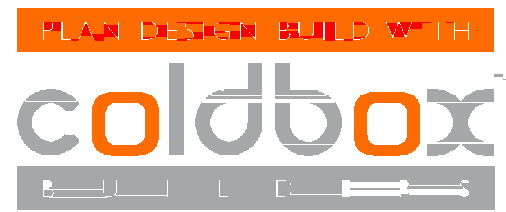


T.O. PARAPET HIGH ROOF 140390
 T.O. STEEL AT HIGH ROOF 139190

T.O. PARAPET 117600
 T.O. STEEL 116100
 THIRD FLOOR 108950
 SECOND FLOOR 104010
 GROUND FLOOR 100000
 SITE 99848

96700 GROUND FLOOR OFFICES
 96548 SITE STREET

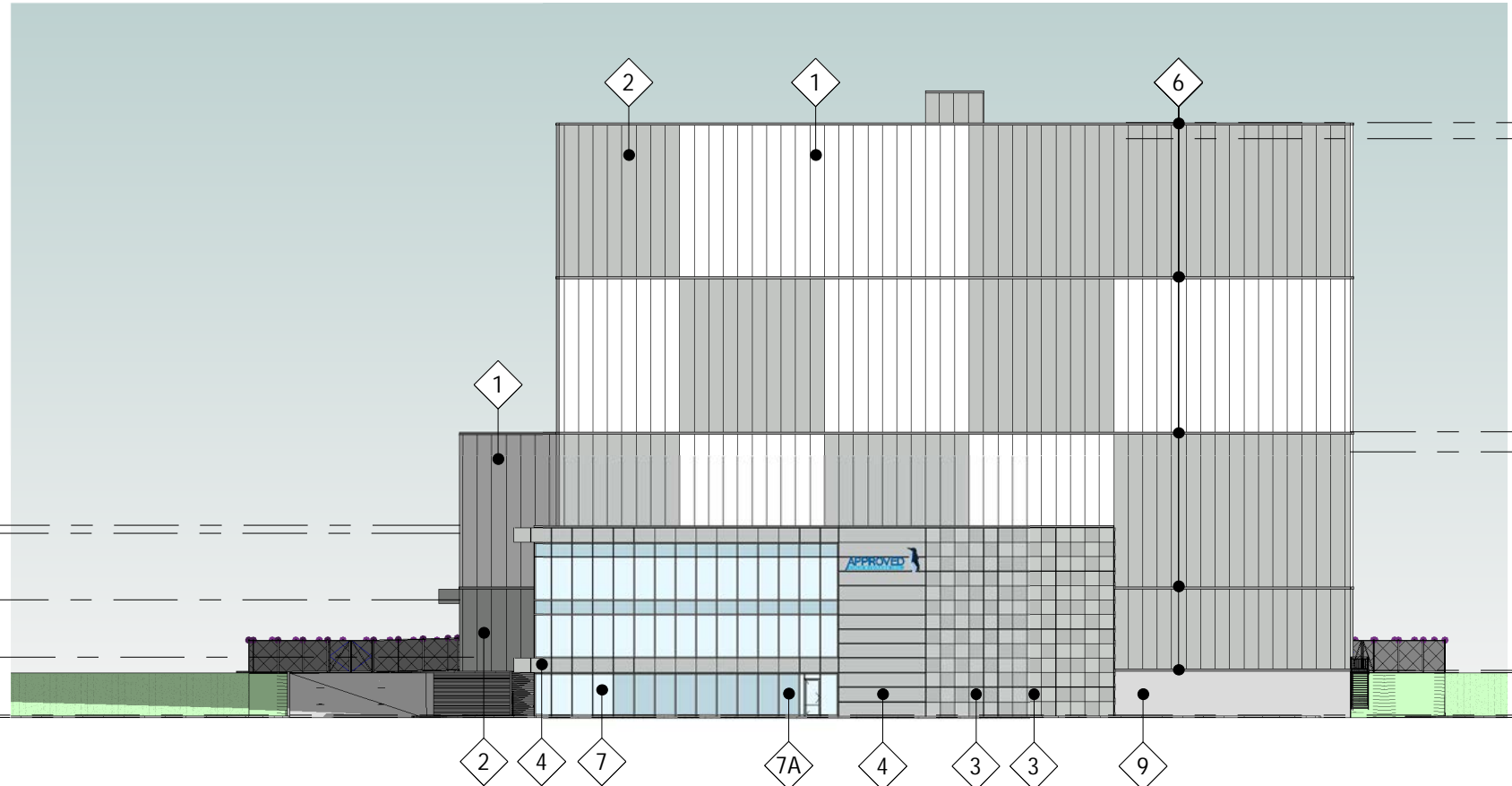
ELEVATION EAST 2
 1: 500 P410



ACS SUPERIOR GRF
 SUPERIOR COURT - OAKVILLE - ONTARIO

PRESENTATION R01 - SITE PLAN APPLICATION
 ELEVATIONS P410
 ISSUED FOR S.P.A R01 2021-08-16
 Scale: 1: 500 FOLIO 21047





T.O. PARAPET HIGH ROOF 140390
T.O. STEEL AT HIGH ROOF 139190

T.O. PARAPET 117600
T.O. STEEL 116100

110721 T.O. PARAPET OFFICES
110111 T.O. STEEL OFFICES
105234 THIRD FLOOR OFFICES
100967 SECOND FLOOR OFFICES
96700 GROUND FLOOR OFFICES
96548 SITE STREET

GROUND FLOOR 100000
SITE 99848

ELEVATION SOUTH 1
1:500 P420

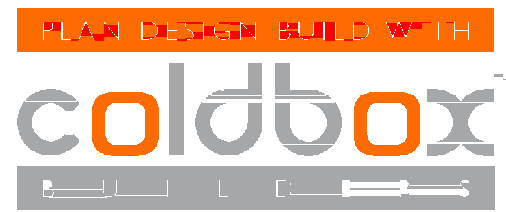


140390 T.O. PARAPET HIGH ROOF
139190 T.O. STEEL AT HIGH ROOF

117600 T.O. PARAPET
116100 T.O. STEEL
108950 THIRD FLOOR
104010 SECOND FLOOR
100000 GROUND FLOOR

T.O. PARAPET OFFICES 110721
T.O. STEEL OFFICES 110111
THIRD FLOOR OFFICES 105234
SECOND FLOOR OFFICES 100967
GROUND FLOOR OFFICES 96700
SITE STREET 96548

ELEVATION WEST 2
1:500 P420



ACS SUPERIOR GRF
SUPERIOR COURT - OAKVILLE - ONTARIO

PRESENTATION R01 - SITE PLAN APPLICATION
ELEVATIONS P420
ISSUED FOR S.P.A R01 2021-08-16
Scale: 1:500 FOLIO 21047







ACS SUPERIOR GRF

SUPERIOR COURT - OAKVILLE - ONTARIO

PRESENTATION R01 - SITE PLAN APPLICATION
PERPECTIVE P510
ISSUED FOR S.P.A R01 2021-08-16
FOLIO 21047



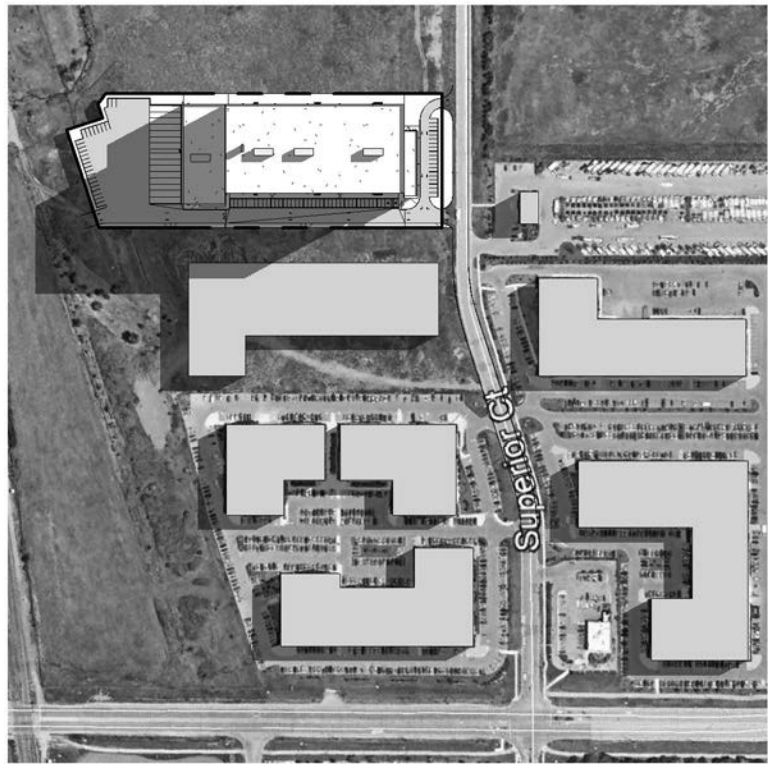
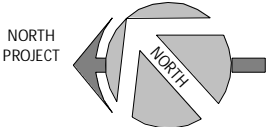


ACS SUPERIOR GRF

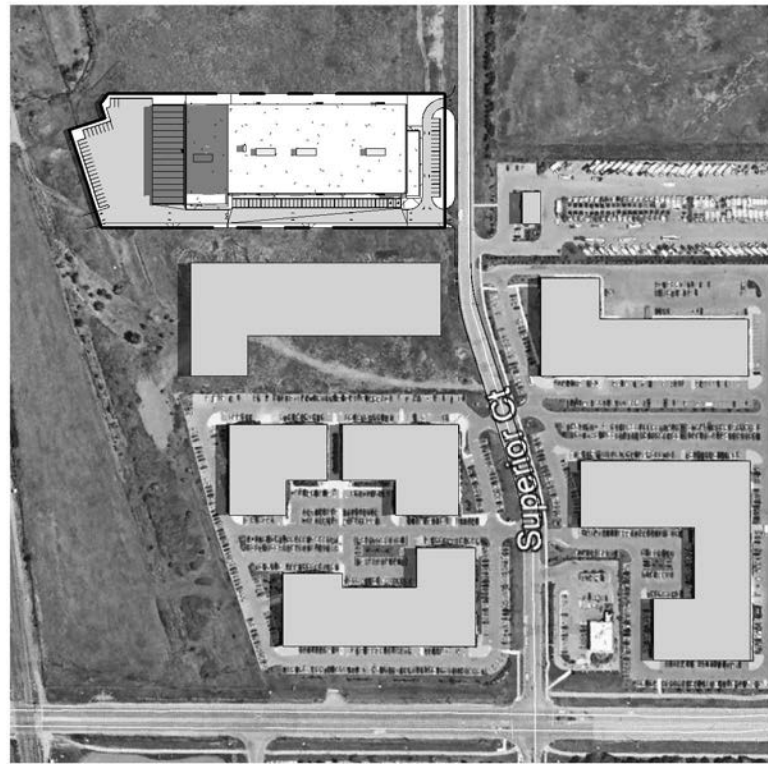
SUPERIOR COURT - OAKVILLE - ONTARIO

PRESENTATION R01 - SITE PLAN APPLICATION
PERSPECTIVE P520
ISSUED FOR S.P.A R01 2021-08-16
FOLIO 21047

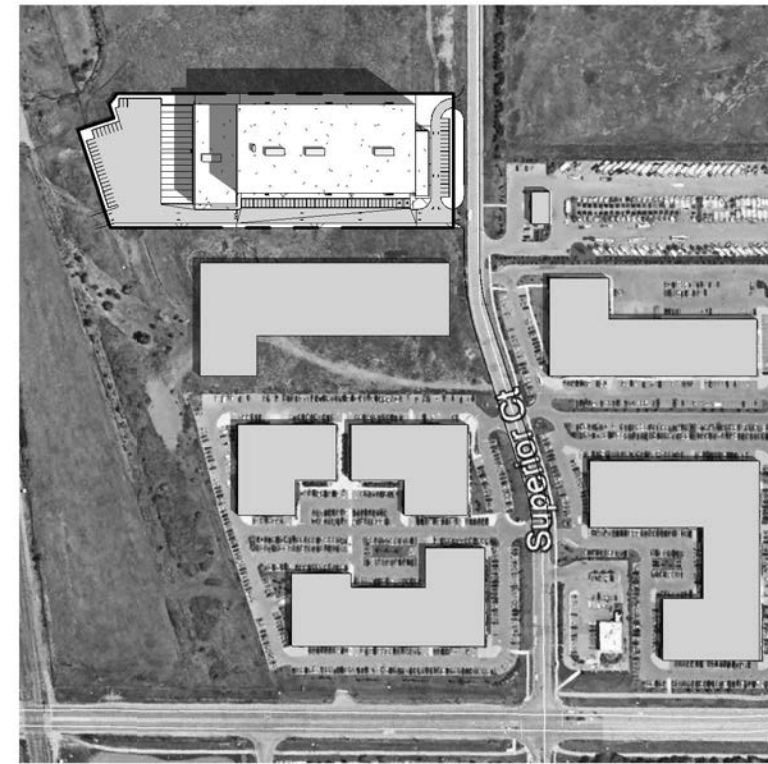




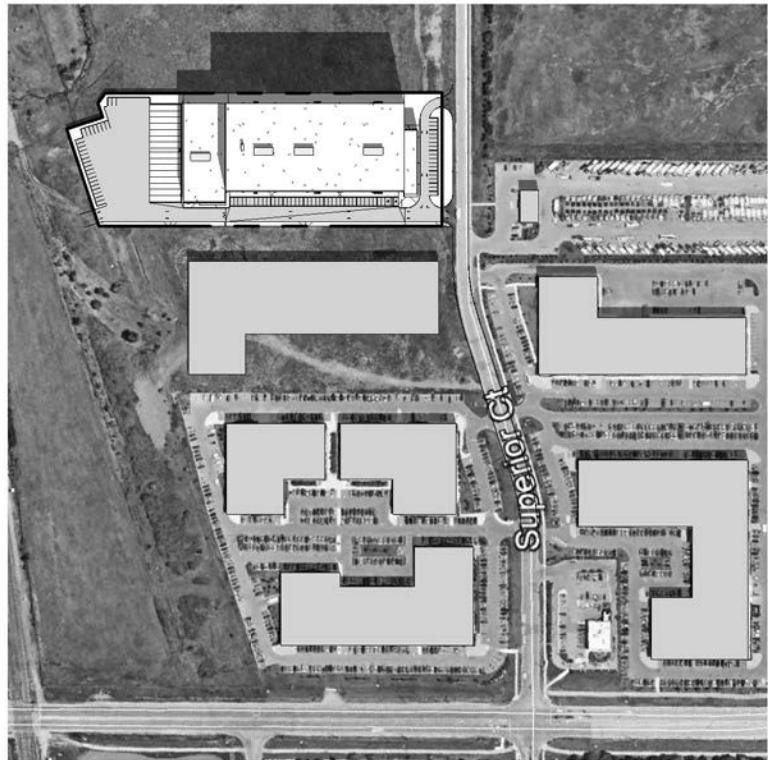
SPRING EQUINOX - 08 AM



SPRING EQUINOX - 10 AM



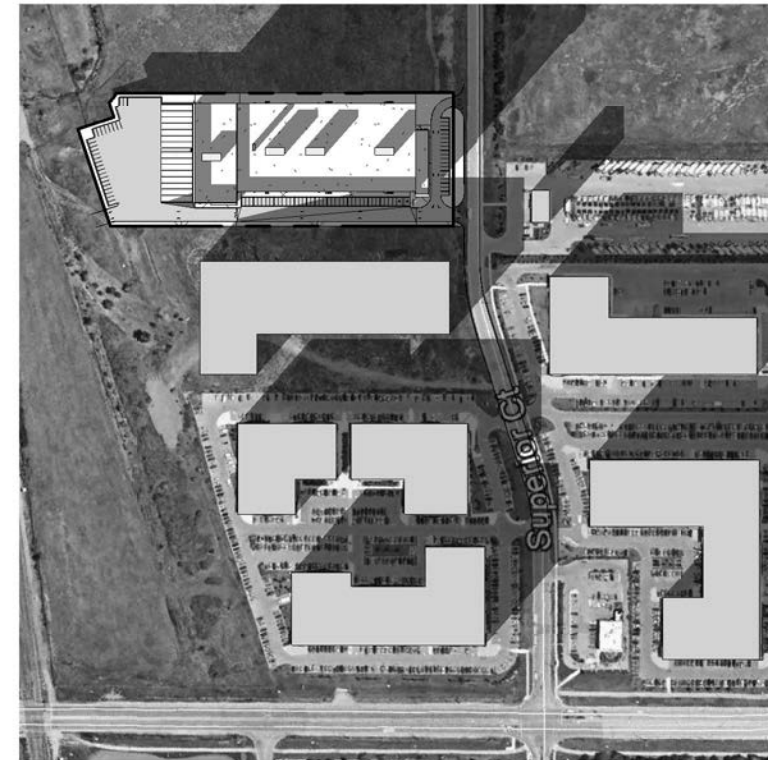
SPRING EQUINOX - 12 AM



SPRING EQUINOX - 02 PM

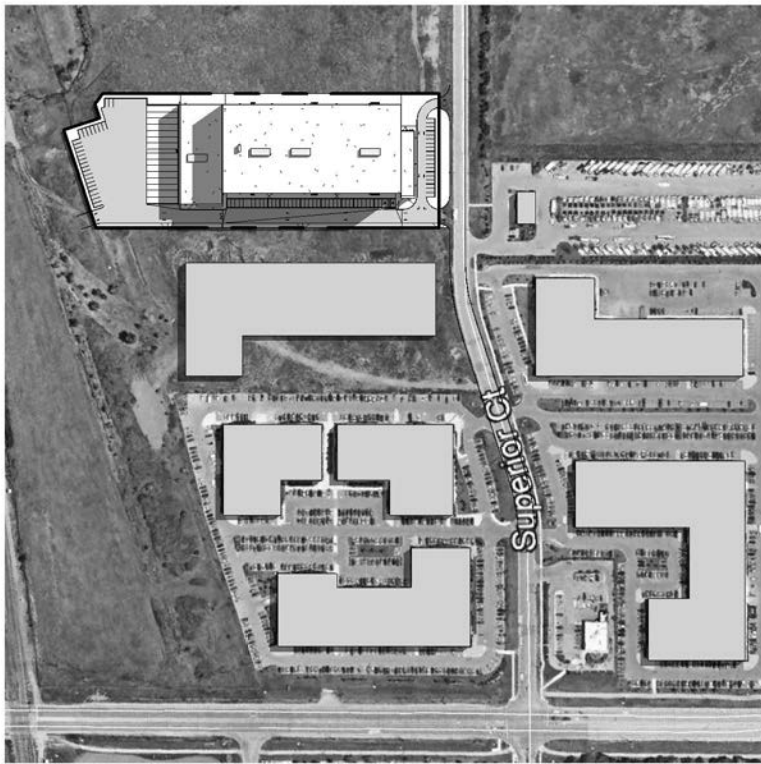
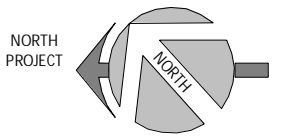


SPRING EQUINOX - 04 PM

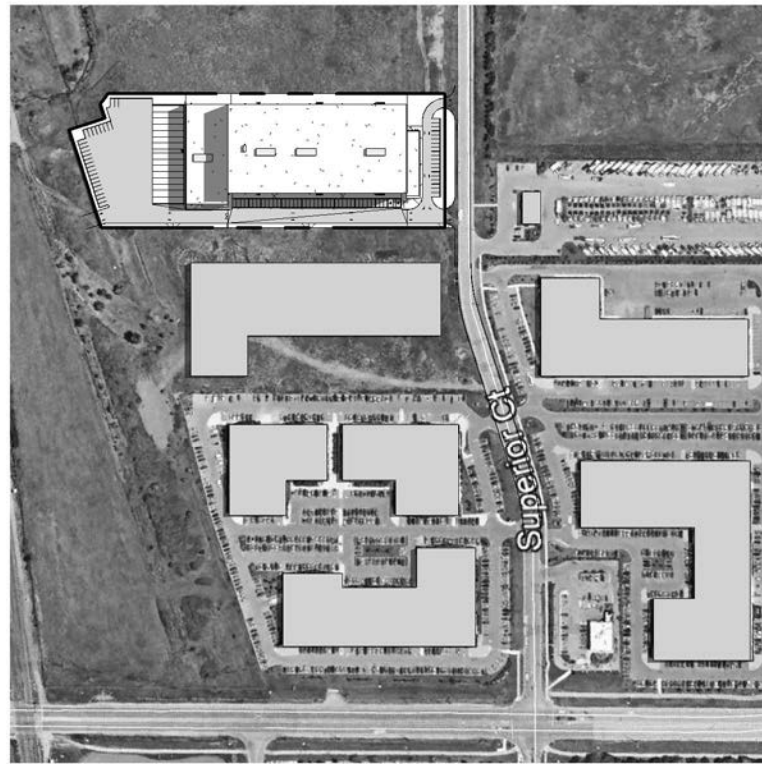


SPRING EQUINOX - 06 PM

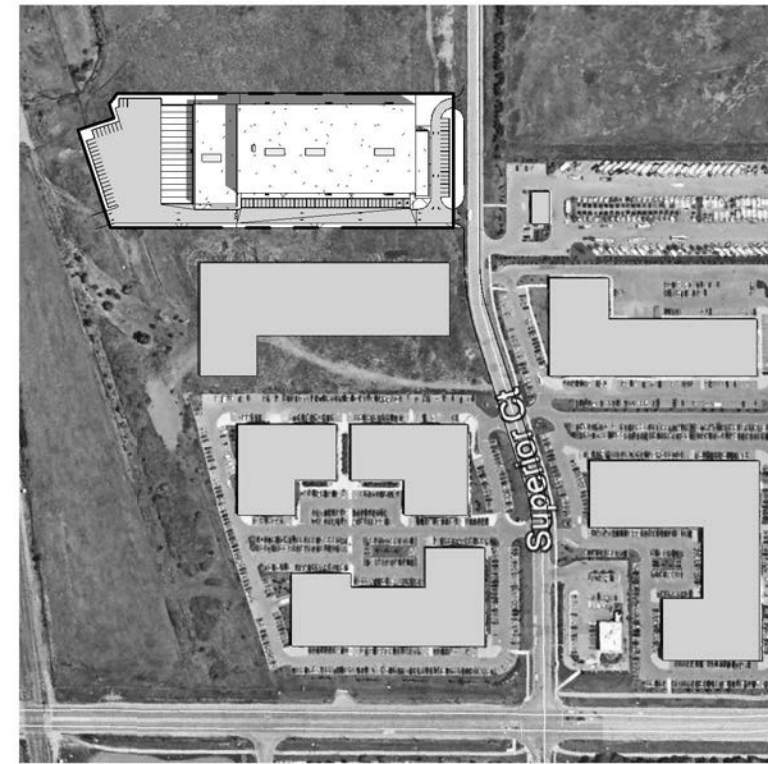
SUMMER SOLSTICE
2021-06-21



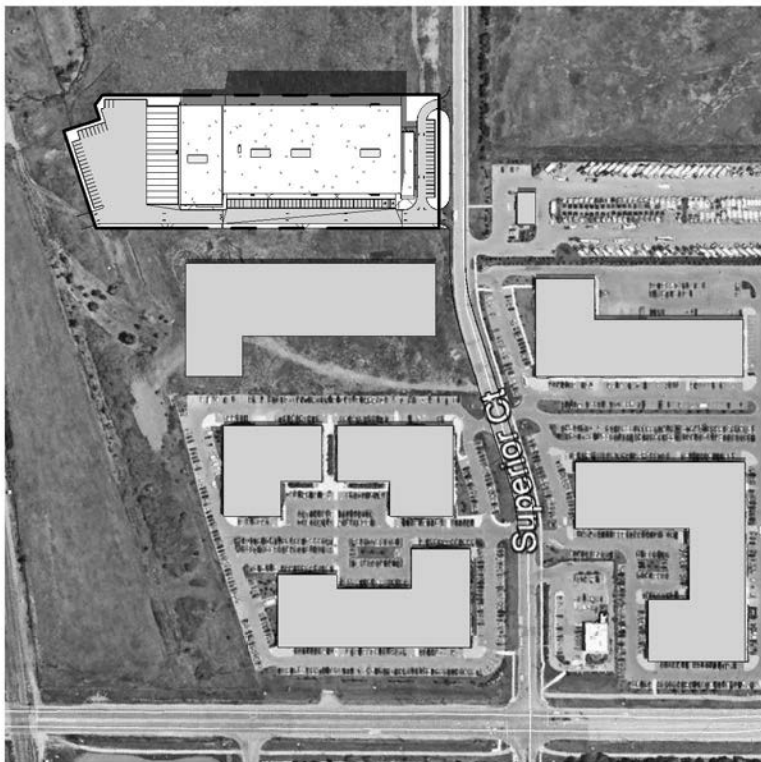
SUMMER SOLSTICE - 08 AM



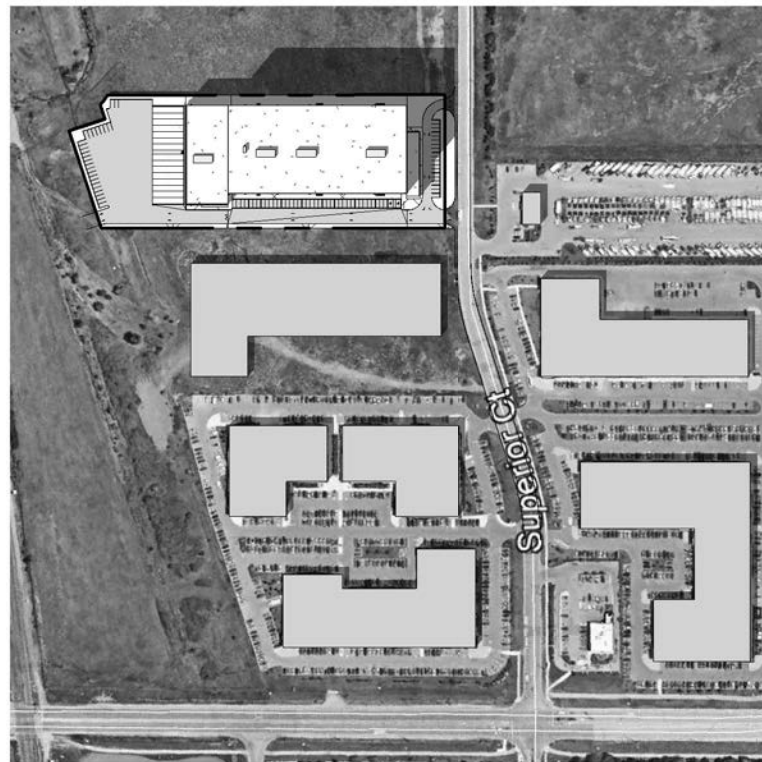
SUMMER SOLSTICE - 10 AM



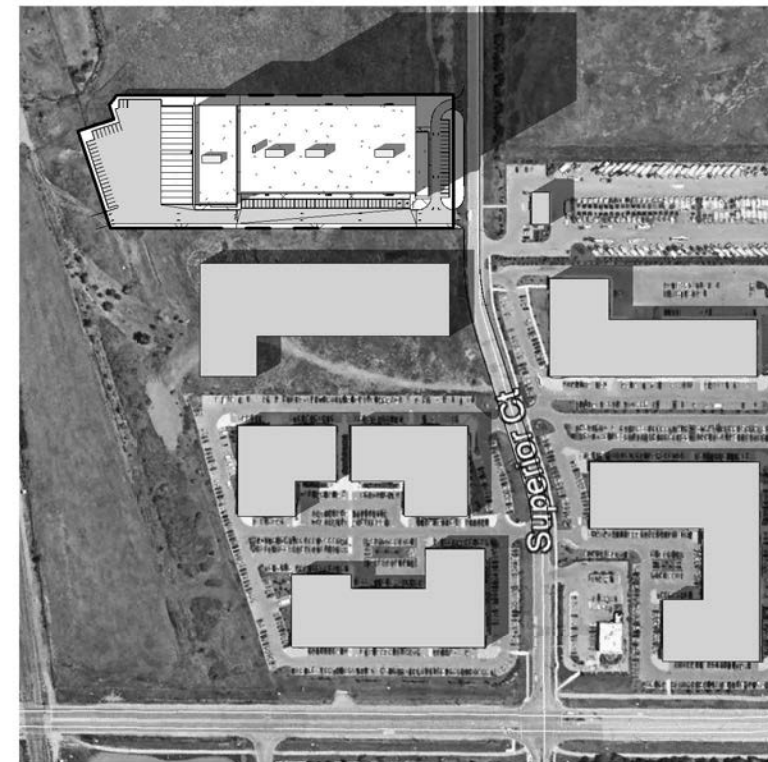
SUMMER SOLSTICE - 12 AM



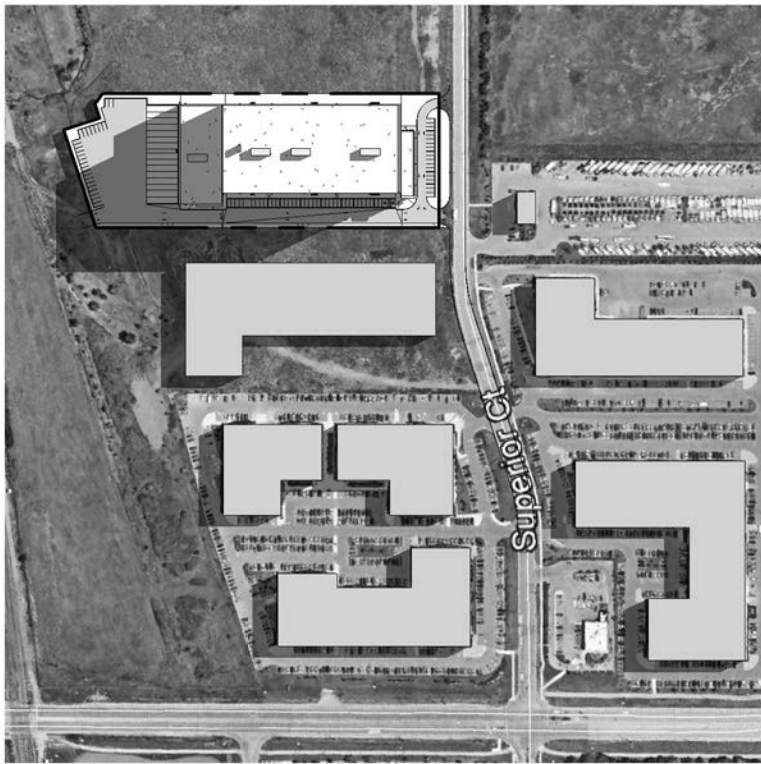
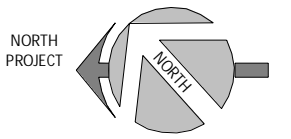
SUMMER SOLSTICE - 02 PM



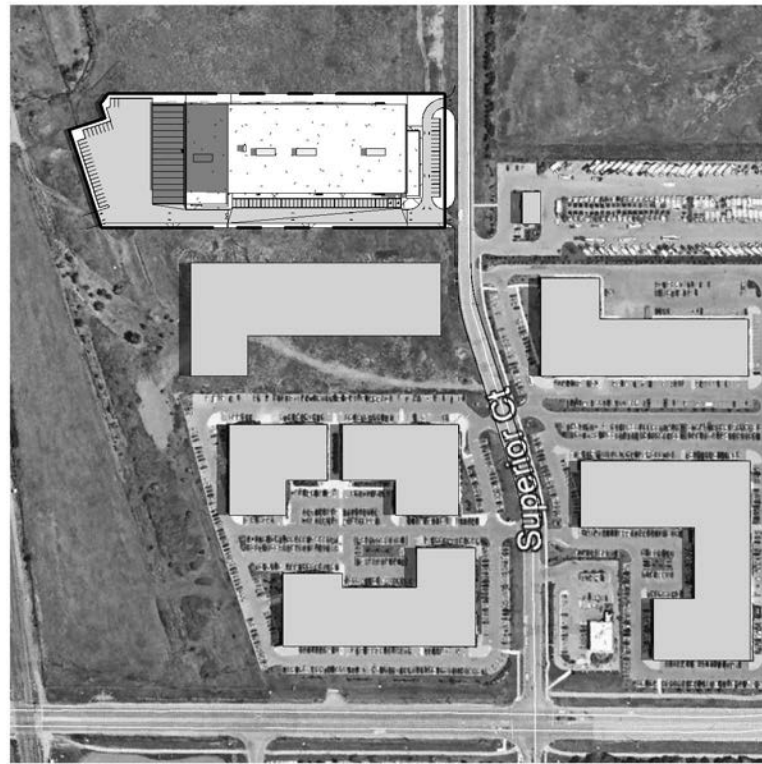
SUMMER SOLSTICE - 04 PM



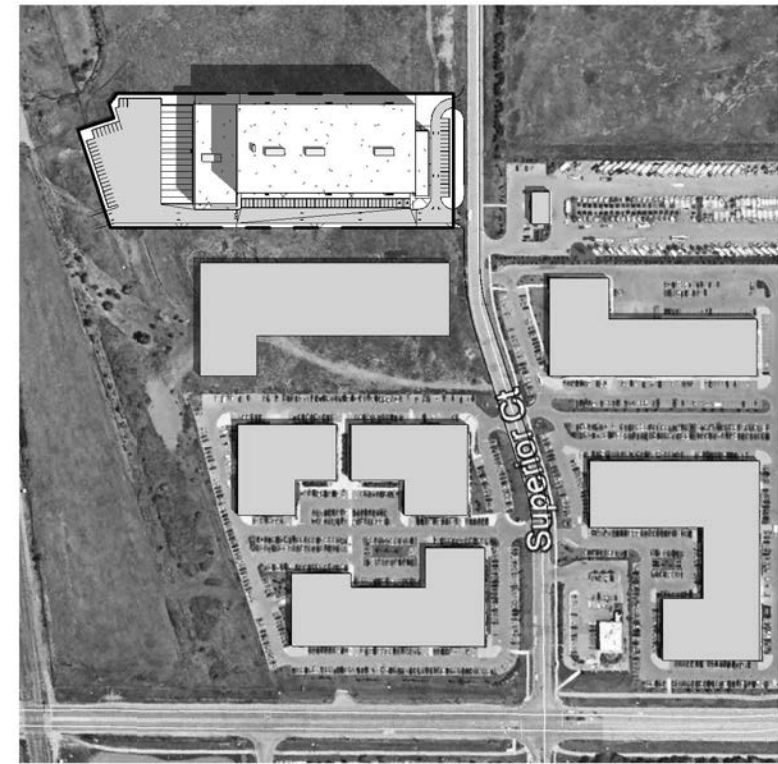
SUMMER SOLSTICE - 06 PM



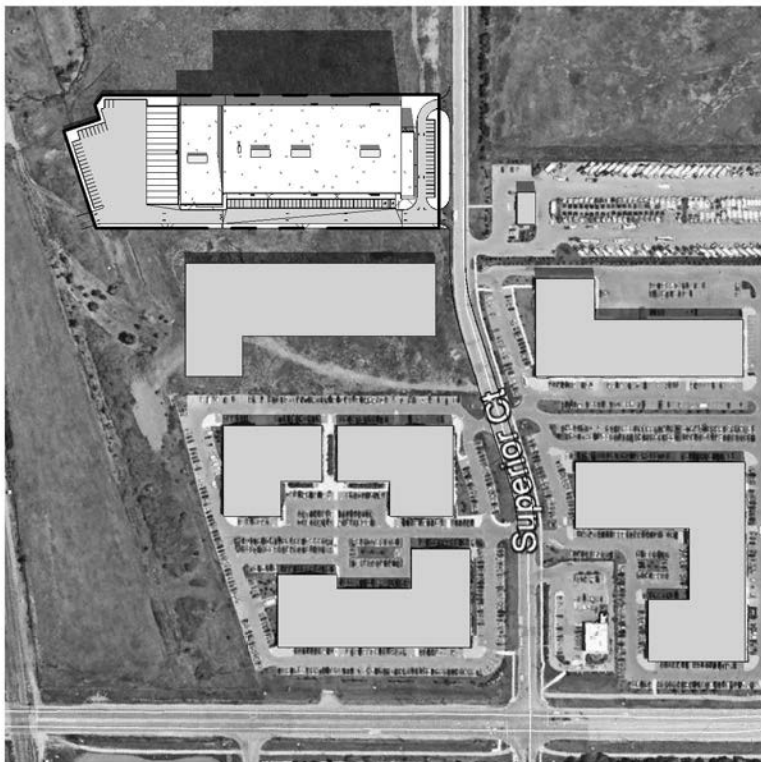
FALL EQUINOX - 08 AM



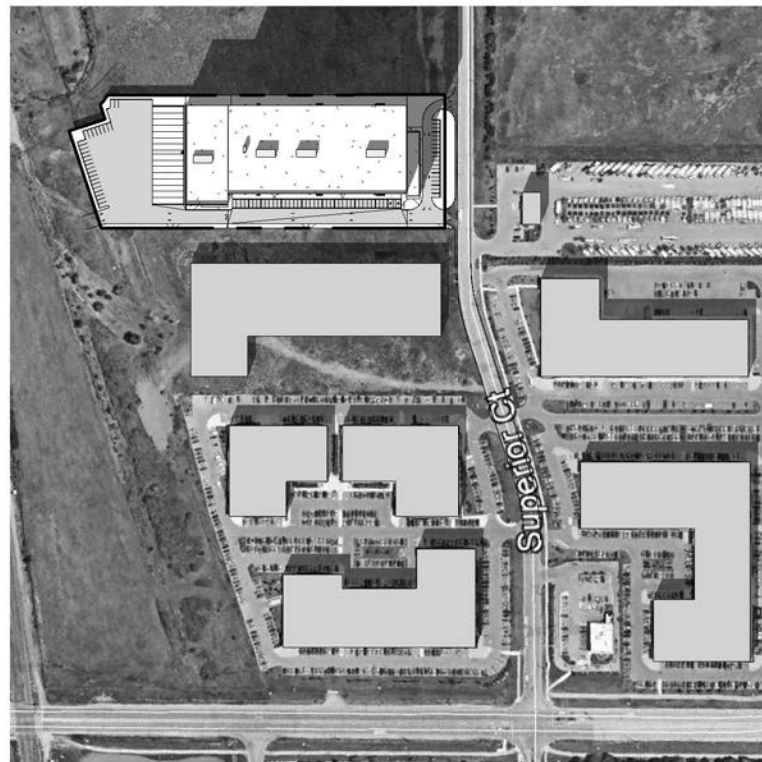
FALL EQUINOX - 10 AM



FALL EQUINOX - 12 AM



FALL EQUINOX - 02 PM

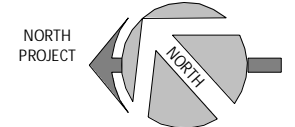


FALL EQUINOX - 04 PM

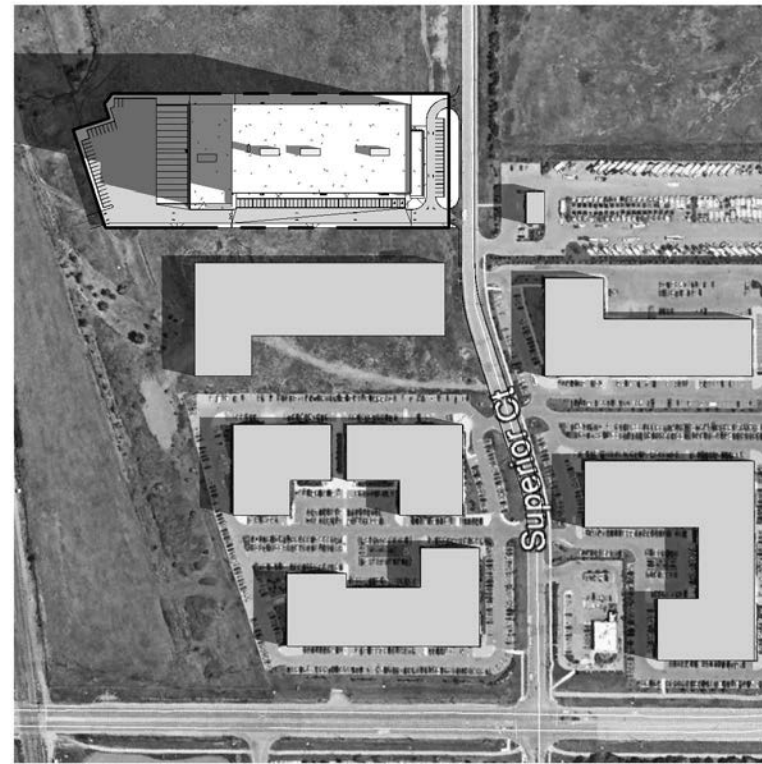


FALL EQUINOX - 06 PM

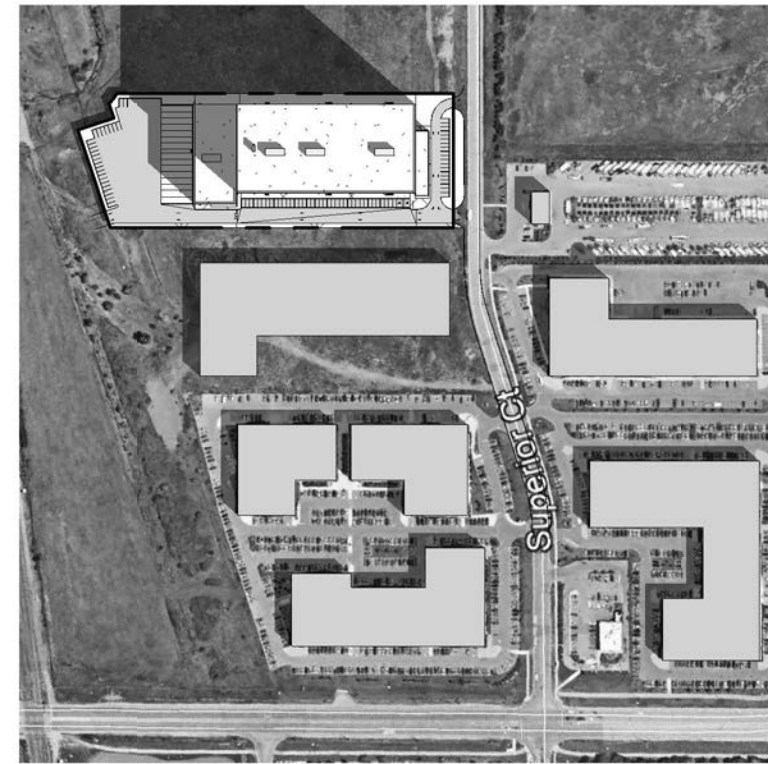
WINTER SOLSTICE
2021-12-21



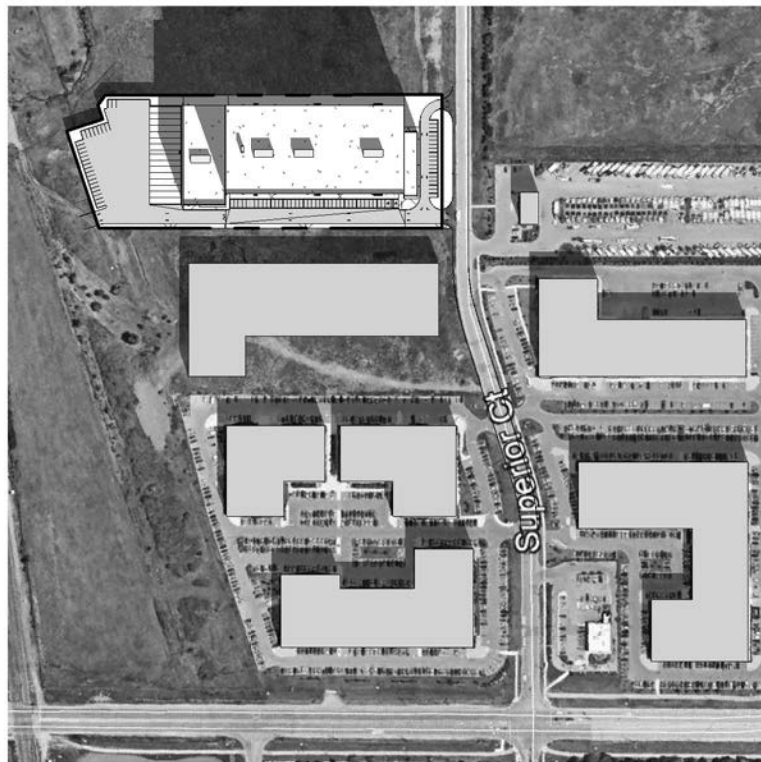
WINTER SOLSTICE - 08 AM



WINTER SOLSTICE - 10 AM



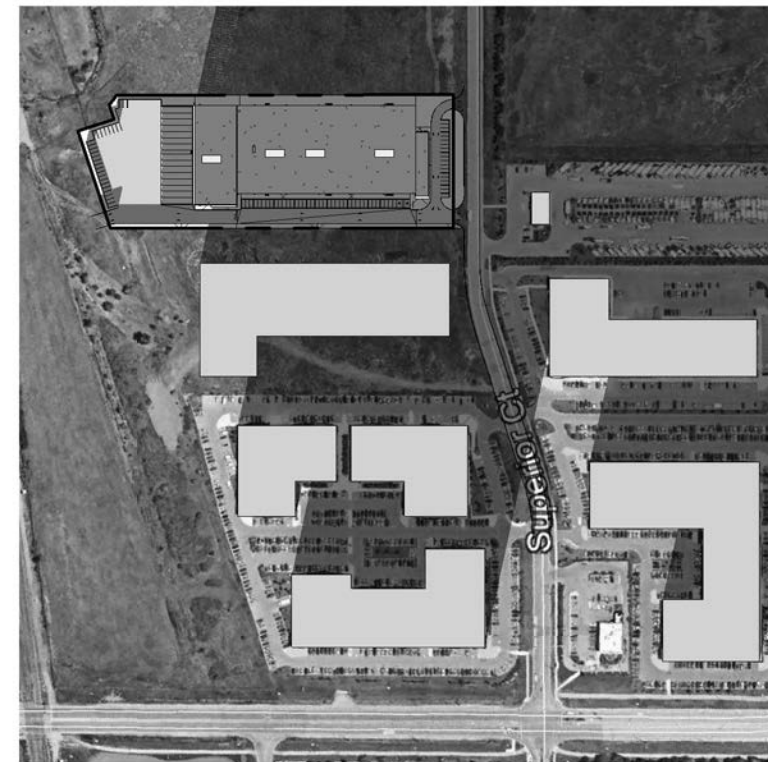
WINTER SOLSTICE - 12 AM



WINTER SOLSTICE - 02 PM



WINTER SOLSTICE - 04 PM



WINTER SOLSTICE - 06 PM