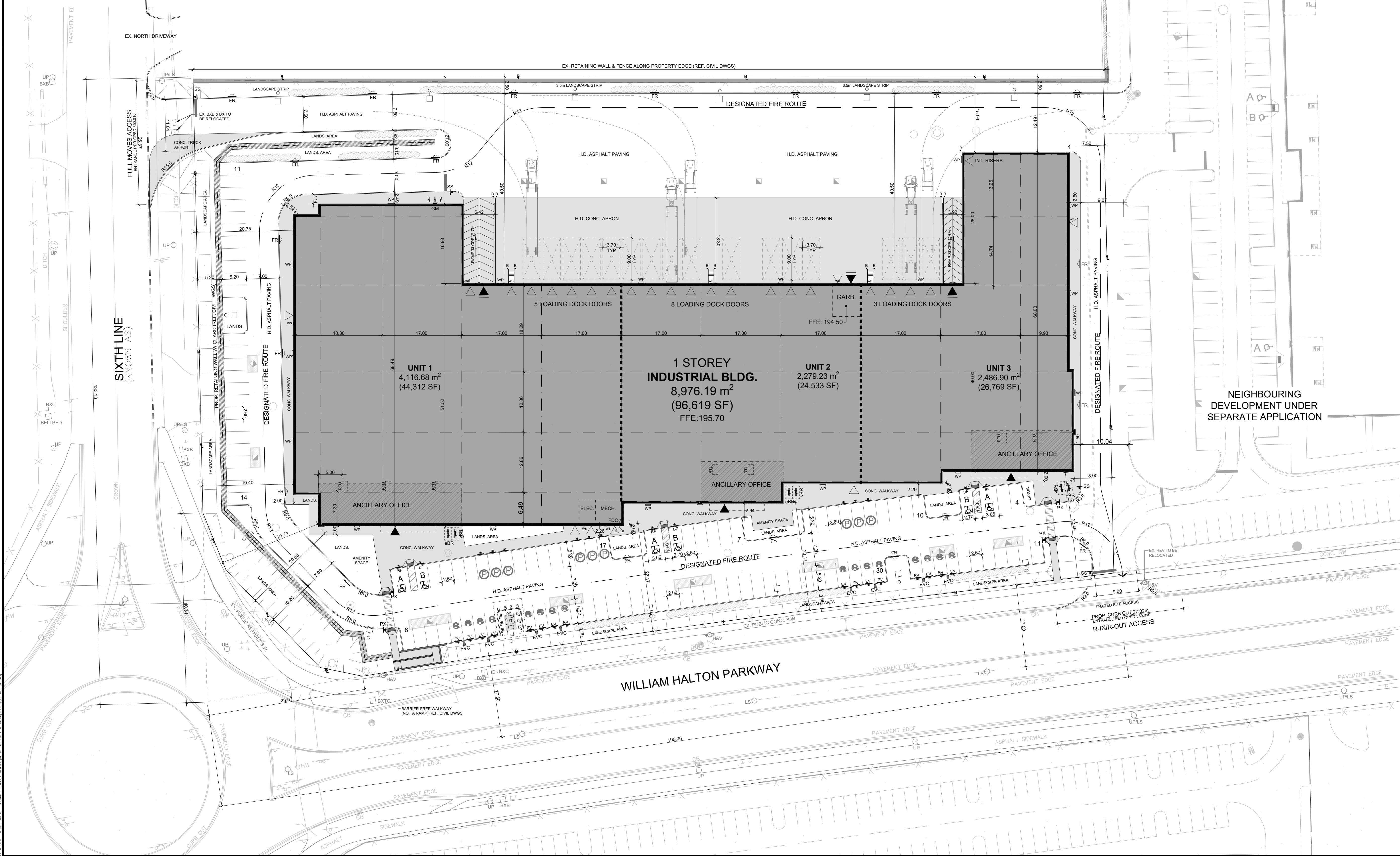
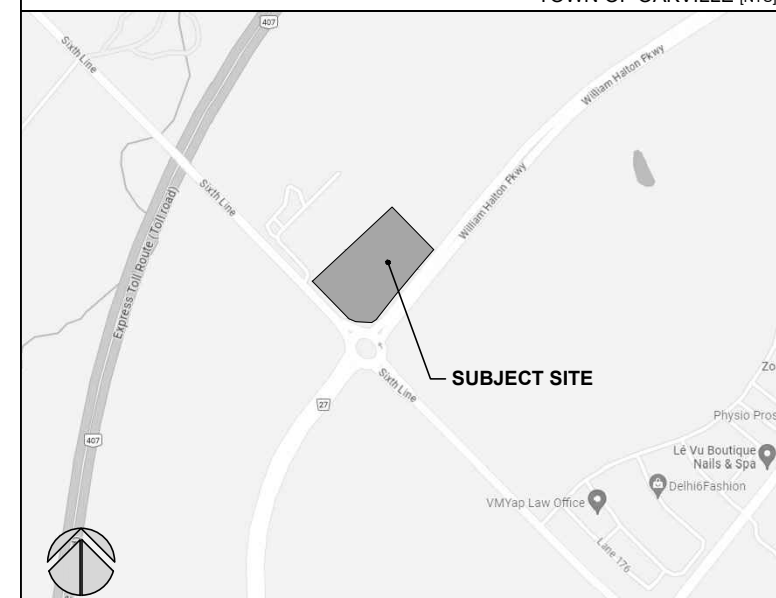


SURVEY LEGEND

BXB	DENOTES BELL BOX	-X-	DENOTES FENCE LINE	INV.	DENOTES INVERT ELEVATION
CB	DENOTES CATCH BASIN	PC	DENOTES PEDESTRIAN CROSSING	OBV.	DENOTES OBVERT ELEVATION
P.I.N.	DENOTES PROPERTY IDENTIFIER NUMBER	SW	DENOTES SIDEWALK		
MW	DENOTES MONITORING WELL	CONC.	DENOTES CONCRETE		
MH	DENOTES MANHOLE	LS	DENOTES LAMP STANDARD		
MHSA	DENOTES MANHOLE SANITARY	HW	DENOTES HANDWELL		
MHST	DENOTES MANHOLE STORM	BXC	DENOTES COMMUNICATION BOX		
MHW	DENOTES MANHOLE WATER	BKTC	DENOTES TRAFFIC CONTROL BOX		
UP	DENOTES UTILITY POLE		DENOTES GUY WIRE ANCHOR		
WV	DENOTES WATER VALVE				
-W-	DENOTES OVERHEAD WIRE				



KEY PLAN



LEGAL DESCRIPTION

BLOCK 7 on Plan 20M-1243
PLAN OF SUBDIVISION OF
PART OF XXXX
CONCESSION XX
NORTH OF DUNDAS STREET
(GEOGRAPHIC TOWNSHIP OF TRAFALGAR)
TOWN OF OAKVILLE
REGIONAL MUNICIPALITY OF HALTON

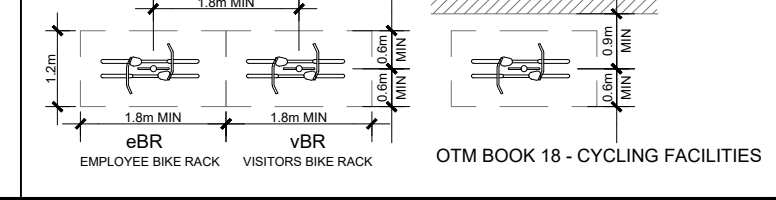
SITE STATISTICS

ZONING	LE sp.45	LIGHT EMPLOYMENT
SITE AREA	22,462.50 m ²	5.55 Ac
REQUIRED	15m MIN	133.13 m
FRONT YARD	3m MIN 24m MAX	19.40 m
INTERIOR SIDE YARD	3.0m	15.99 m
REAR YARD	7.5m	7.50 m
FLANKAGE YARD	3m MIN 24m MAX	22.49 m
FLOOR SPACE INDEX	3 MAX	0.4
SITE COVERAGE	UNKNOWN	39.96%
BUILDING HEIGHT	15 STOREYS	1 STOREY
LANDSCAPING COVERAGE	10% MIN	10.87%
PAVED AREA	UNKNOWN	49.17%
REQUIRED	PROVIDED	
INDUSTRIAL USE	89 Spaces	112 Spaces
LEASABLE FLOOR AREA OF EACH PREMISES UNDER 7,500 m ²	89 Spaces	112 Spaces
1 PARKING SPACE PER 100 m ² OF LEASABLE FLOOR AREA	89 Spaces	112 Spaces
TOTAL PARKING	89 Spaces	112 Spaces
BARrier FREE PARKING	3 Type A 2 Type B OR 5 Spaces	3 Type A 3 Type B OR 6 Spaces
101-150 Spaces PROVIDED	2 Spaces MIN	16 Spaces
LOADING SPACES	9 Spaces	12 Spaces
BICYCLE SPACES	9 Spaces	12 Spaces

SYMBOL LEGEND

MAN DOOR LOCATIONS	PRINCIPAL DOOR LOCATIONS
LOADING DOCK LOCATIONS	DRIVE-IN OR OVERHEAD DOORS
NEW FIRE HYDRANT	CATCH BASIN (REF. CIVIL DWGS)
DOUBLE CATCH BASIN (REF. CIVIL DWGS)	SANITARY MANHOLE (REF. CIVIL DWGS)
CATCH BASIN / MANHOLE (REF. CIVIL DWGS)	STORM MANHOLE (REF. CIVIL DWGS)
HYDRO POLE STANDARD / UTILITY POLE (REF. ELECTRICAL DWGS)	BICYCLE RING - 2 SPACES (REF. DTL BELOW & LANDS. DWGS)
DIRECTION OF TRAFFIC FLOW	HYDRO TRANSFORMER ON CONC. PAD (REF. ELECTRICAL DWGS)
GAS METER	BARrier FREE PARKING (TYPE 'A' (3.65m WIDE) TYPE 'B' (2.70m WIDE))
LIGHT STANDARD (REF. ELECTRICAL DWGS)	PEDESTRIAN DRIVE AISLE CONNECTIONS: PAINTED LINEWORK
CURB-RAMP WITH TACTILE PLATE (REF. A-1.2 DETAILS SHEET)	1.2m H. 0.2m DIA. CONC. FILLED STEEL BOLLARD
FIRE DEPARTMENT CONNECTION / SIAMSE CONNECTION	BARrier FREE PARKING SIGNAGE
CARPOOL PARKING SPACE & SIGN	REF. PLACEMENT MARKING & SIGNAGE PLAN BY LEA CONSULTING LTD.
POST MOUNTED STOP SIGN	REF. PLACEMENT MARKING & SIGNAGE PLAN BY LEA CONSULTING LTD.
PAINTED STOP BAR (WHERE REQUIRED)	MECH. MECHANICAL ROOM
ELEC. ELECTRICAL ROOM	GARB. INTERNAL REFUSE STORAGE ROOM
LOADING SPACE (9.0 m x 3.7 m x 4.2 m Clear Height)	HIGH EFFICIENCY VEHICLE CHARGING STATION
HIGH EFFICIENCY VEHICLE CHARGING STATION	HIGH EFFICIENCY VEHICLE CHARGING STATION
SNOW STORAGE AREAS (REF. LANDS. DWGS)	BOUNDARY / PROPERTY LINE
POST MOUNTED PEDESTRIAN CROSSING SIGNS	REF. PLACEMENT MARKING & SIGNAGE PLAN BY LEA CONSULTING LTD.
LIGHTING WALL PACK OR WALL SCONCE (REF. ELECTRICAL DWGS)	

BICYCLE PARKING CONFIGURATION CLEARANCES



No.	ISSUED	DATE
1	ISSUED FOR SITE PLAN PRE-CONSULTATION	JAN. 31, 2024
2	ISSUED FOR SITE PLAN REVIEW 1ST SUBMISSION	JULY 16, 2024
3	RE-ISSUED FOR SITE PLAN 2ND SUBMISSION	MAR. 21, 2025

No.	REVISION	DATE
1	REVISED TO SUIT MUNICIPAL COMMENTS	MAR. 21, 2025

BALDASSARRA
Architects Inc.

30 Great Gulf Drive, Unit 20 | Concord ON | L4K 0K7
T: 905.660.0722 | www.baldassarra.ca

OWNERS INFORMATION:
TAFIA DEVELOPMENT CORP.



SIXTH LINE & WILLIAM HALTON PKWY

15 WILLIAM HALTON PARKWAY EAST
OAKVILLE, ON

SITE PLAN

SP.1215.006/01

DATE: OCT. 2023
PROJECT No.

DRAWN BY: DW
DRAWING No.

CHECKED: SCALE: 1:400

24-06

A-1.0