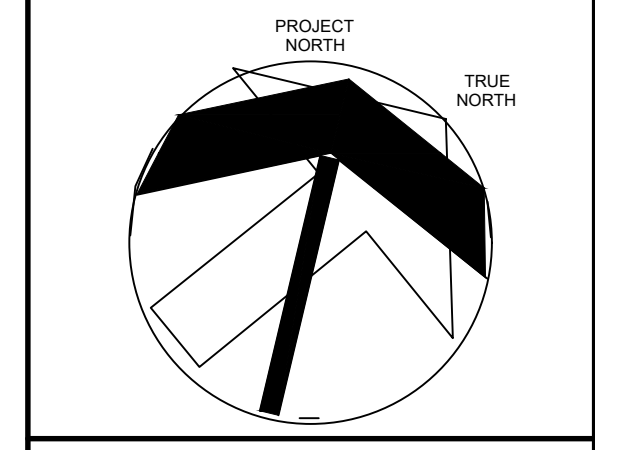
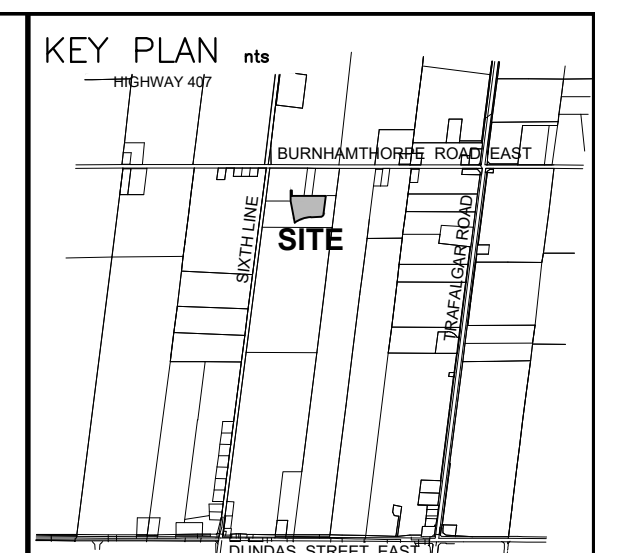
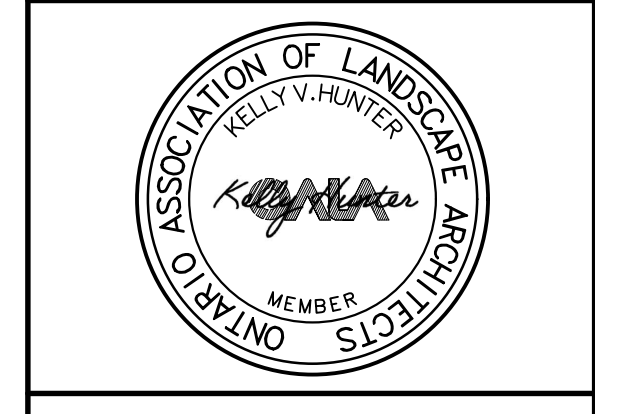


- ### GENERAL NOTES:
1. ALL CONSTRUCTION HOARDING AND TREE PROTECTION TO BE INSTALLED PRIOR TO START OF OPERATIONS.
 2. EXISTING CONDITIONS PLAN OF SURVEY BY CUNNINGHAM MCCONNELL LIMITED, DATED DECEMBER 3, 2023.
 3. CONTRACTOR TO VERIFY ALL SITE CONDITIONS AND REPORT ANY DISCREPANCIES TO THE LANDSCAPE ARCHITECT IMMEDIATELY.
 4. LAYOUT ALL WORK FOR INSPECTION AND APPROVAL BY CONSULTANT PRIOR TO COMMENCEMENT OF CONSTRUCTION.
 5. CONTRACTOR RESPONSIBLE FOR ANY AND ALL UNDERGROUND UTILITIES.
 6. CONTRACTOR TO LAY OUT ALL SITE FURNISHINGS FOR LANDSCAPE ARCHITECT / OWNER TO REVIEW AND FINAL FIELD ADJUSTMENT PRIOR TO CONTRACTOR AFFIXING SITE FURNISHINGS TO HARD SURFACES.
 7. CONTRACTOR TO ENSURE POSITIVE DRAINAGE FROM ALL STRUCTURES.
 8. CONTRACTOR TO MAKE GOOD ALL DAMAGE TO ANY EXISTING OR ADJACENT CONDITIONS/STRUCTURES DURING CONSTRUCTION TO THE SATISFACTION AND ACCEPTANCE OF THE CONSULTANT.



NO.	REVISIONS	DATE
1	ISSUED FOR SPA PRE-CONSULT	25-07-03
2	ISSUED FOR SPA	26-02-12



NORTH OAKVILLE #3 CATHOLIC ELEMENTARY SCHOOL

SP 3000 POST ROAD NORTH OAKVILLE, ON
 LEGAL DESCRIPTION: Block 7, Registered Plan 30M-1250 AND Block 11, Registered Plan 30M-1302
 TOWN OF OAKVILLE REGIONAL MUNICIPALITY OF HALTON



LANDSCAPE PLAN

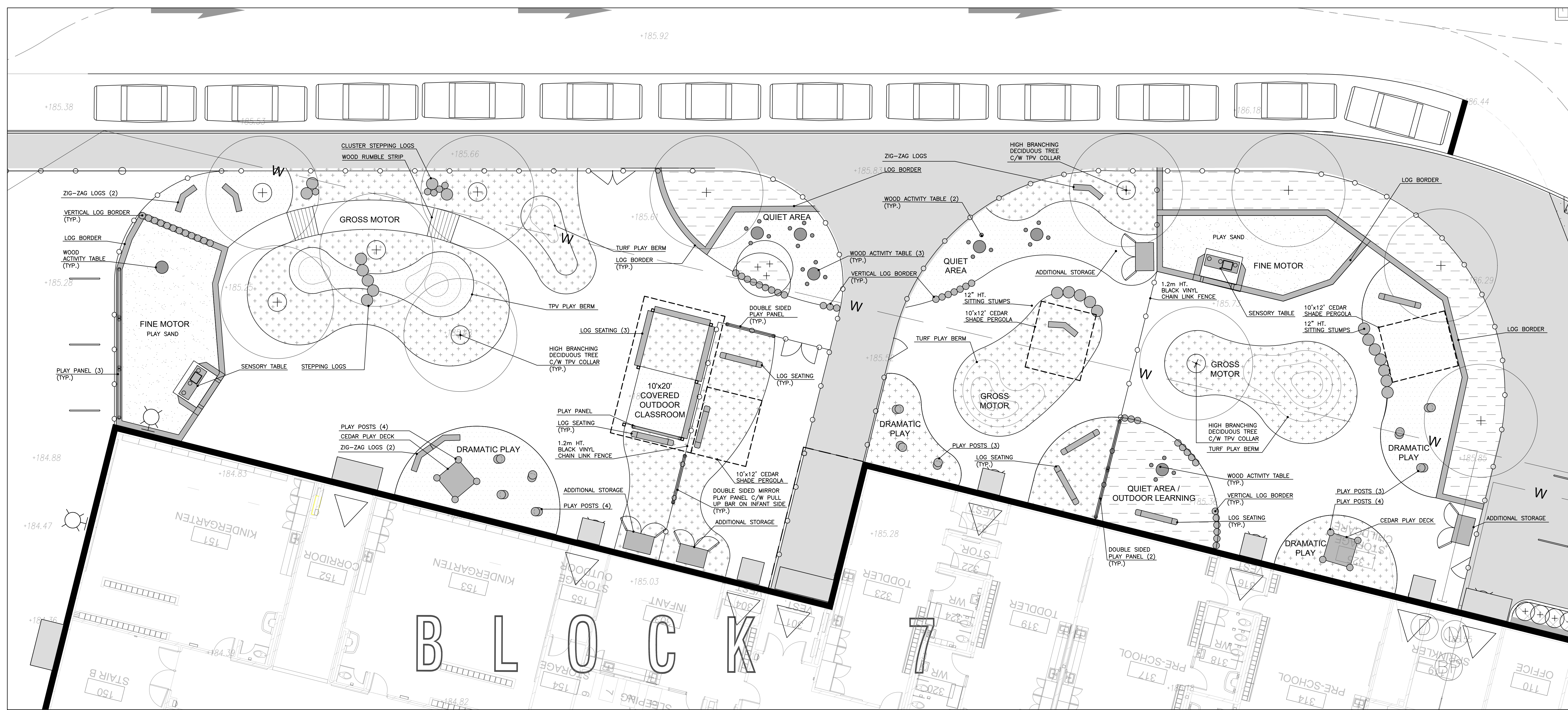


SCALE	1:250	PROJECT	251592
DATE	JULY 2025	DRAWING	L100
DRAWN	KH	CHECKED	KH
PRINT DATE			

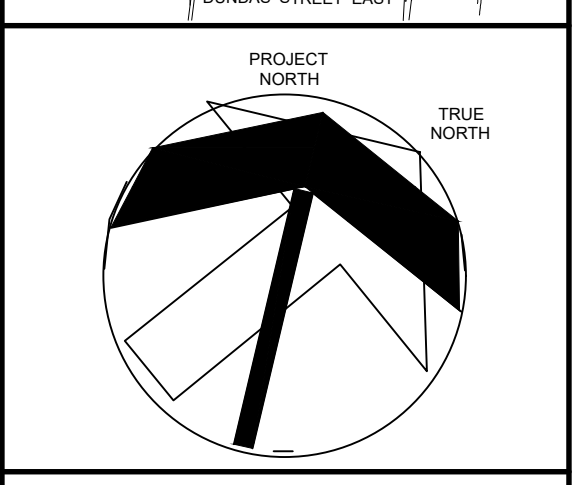
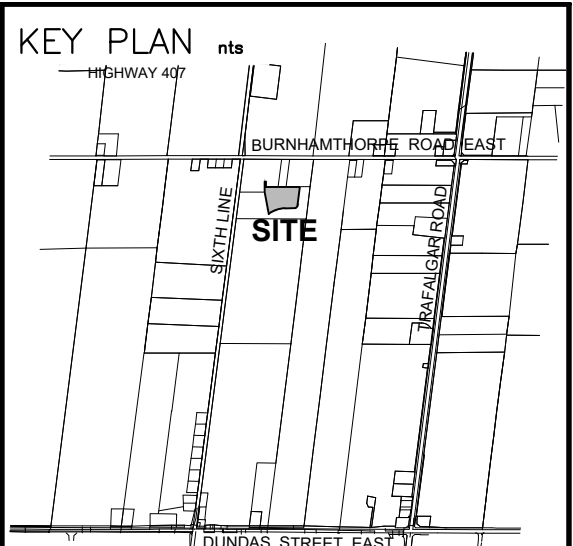
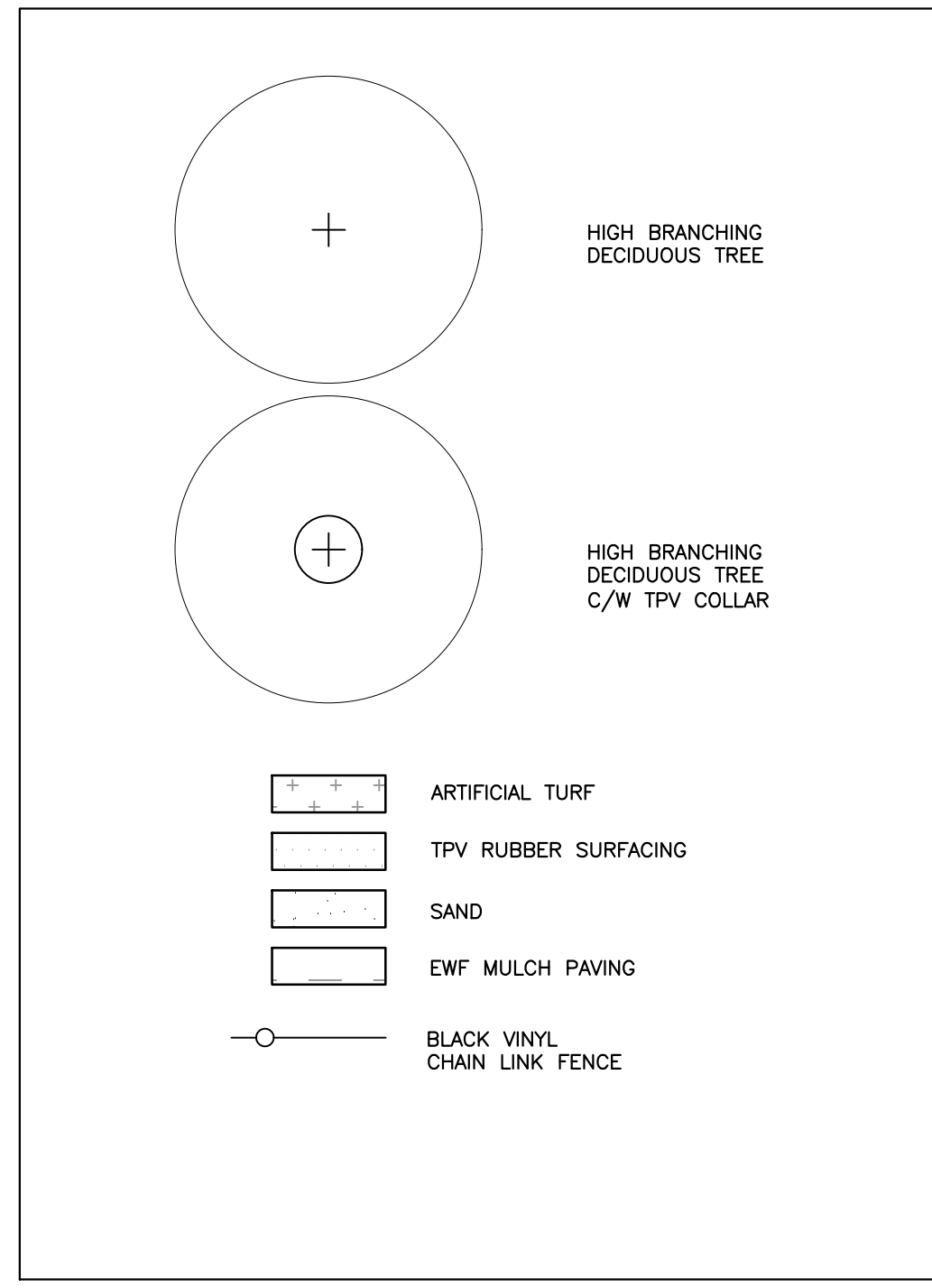
SCHEDULE 1 TREE PROTECTION BARRIER

Tree Protection Barriers

- 1) Tree protection barriers must be 1.2m (4ft) high, waferboard hoarding or an equivalent approved by Urban Forestry Services.
- 2) Tree protection barriers for trees situated on the Town road allowance where visibility must be maintained can be 1.2m (4ft) high and consist of plastic web strip fencing on a wood frame made of 2" x 4"s.
- 3) Where some excavate or fill has to be temporarily located near a tree protection barrier, plywood must be used to ensure no material enters the Tree Protection Zone.
- 4) All supports and bracing should be outside the Tree Protection Zone. All such supports should minimize damaging roots outside the Tree Protection Barrier.
- 5) No construction activity, grade changes, surface treatment or excavations of any kind is permitted within the Tree Protection Zone.



LEGEND



NO.	REVISIONS	DATE
1	ISSUED FOR SPA PRE-CONSULT	25-07-03
2	ISSUED FOR SPA	26-02-12



OAKVILLE #3
CATHOLIC
ELEMENTARY
SCHOOL

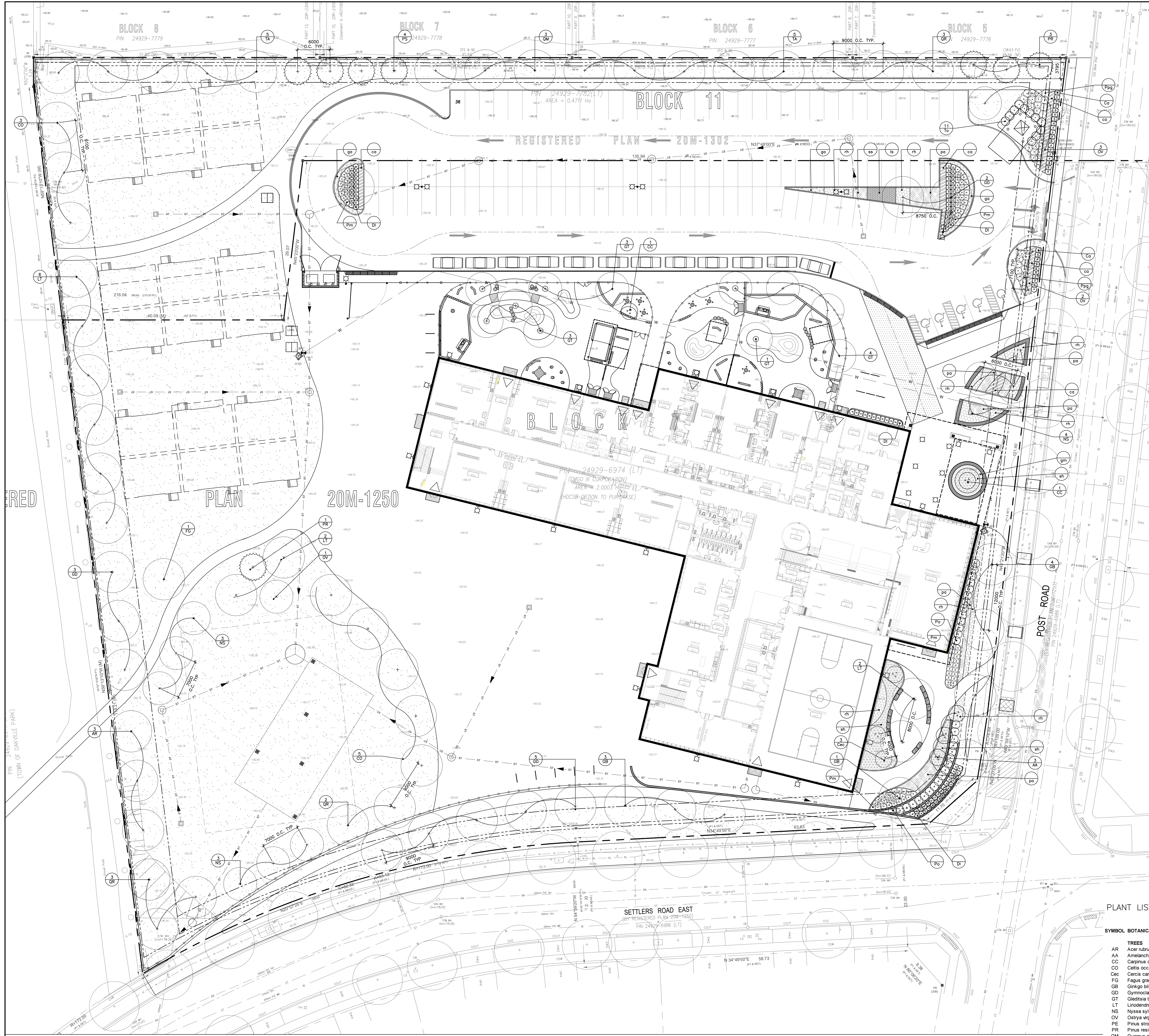
LEGAL DESCRIPTION:
Block XX Registered Plan XXXXX
TOWN OF OAKVILLE, REGION OF HALTON



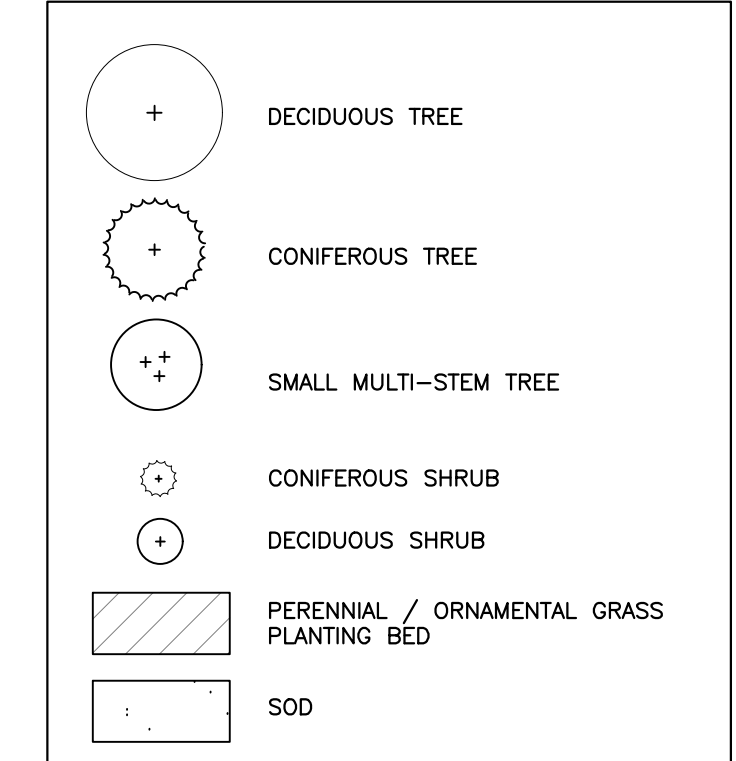
EARLY LEARNING
LANDSCAPE PLAN



SCALE	1:100	PROJECT	251592
DATE	JULY 2025	DRAWING	L105
DRAWN	HH	CHECKED	HH
PRINT DATE			

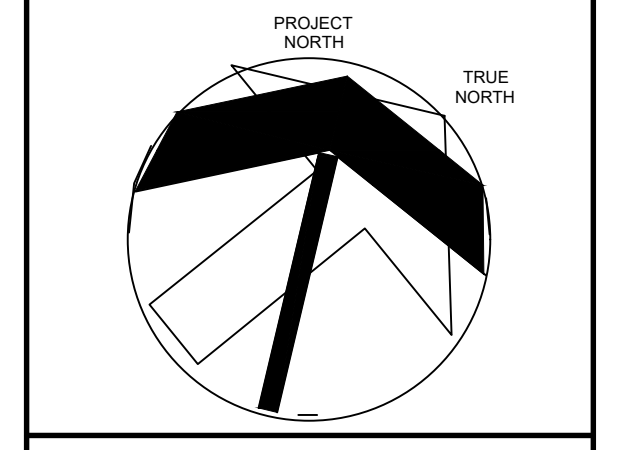
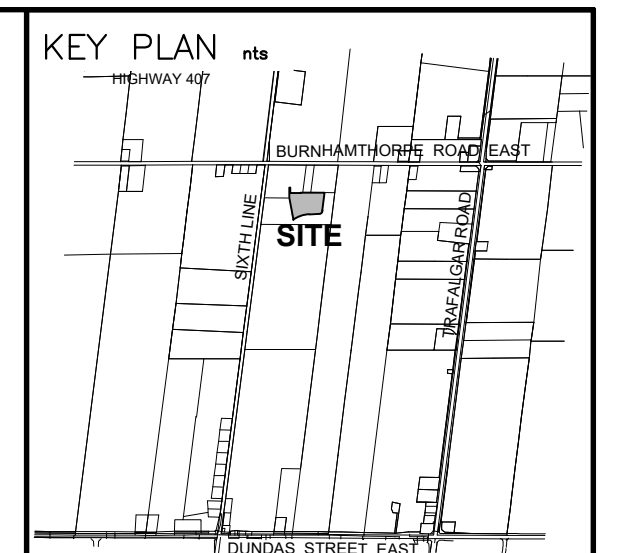


LEGEND



PLANTING NOTES:

1. ALL PLANT MATERIAL IS TO MEET THE STANDARDS AS OUTLINED IN THE CANADIAN STANDARDS FOR NURSERY STOCK, CURRENT EDITION.
2. FOR ALL CONTRACTOR SUBMITTED MATERIALS PLANT SIZES WILL BE AS MEASURED ON SITE. NURSERY WAYBILLS WILL NOT BE ACCEPTABLE FOR DETERMINATION OF PLANT SIZES.
3. PROTECT PLANT MATERIAL FROM FROST, EXCESSIVE HEAT, WIND AND SUN DURING TRANSPORTATION. ALL WILTED OR WIND DAMAGED PLANT MATERIAL WILL BE REJECTED.
4. CONTRACTOR TO LAYOUT ALL PLANT MATERIAL AS PER PLANTING PLANS PRIOR TO INSTALLATION FOR LANDSCAPE ARCHITECT REVIEW AND APPROVAL.
5. WARRANTY PERIOD FOR ALL PLANTING IS ONE YEAR FROM SUBSTANTIAL COMPLETION. WARRANTY REPLACEMENTS OF ALL PLANT MATERIAL WILL BE UNDERTAKEN BY THE CONTRACTOR AS REQUESTED BY THE LANDSCAPE ARCHITECT AT ANY TIME DURING THE WARRANTY PERIOD.
6. FOR BURLAPPED ROOT BALLS, CUT AWAY TOP ONE THIRD OF WRAPPING AND WIRE BASKET WITHOUT DAMAGING ROOT BALL. DO NOT PULL BURLAP OR ROPS FROM UNDER ROOT BALL. FOR POTTED PLANTS REMOVE ENTIRE CONTAINER.
7. BACKFILL SOIL IN 150mm LIFTS. TAMP EACH LIFT TO ELIMINATE AIR POCKETS. WHEN TWO THIRDS OF DEPTH OF PLANTING PIT HAS BEEN BACKFILLED, FILL REMAINING SPACE WITH WATER. AFTER WATER HAS PENETRATED INTO SOIL, BACKFILL TO FINISH GRADE.
8. PLANTS SHOWN IN GROUPS ARE TO BE PLANTED IN CONTINUOUS PLANT BEDS AS SHOWN ON PLANTING DETAIL.
9. PLANT MATERIAL INSTALLED FOLLOWING LEAF DROP IN THE FALL WILL BE ACCEPTED AFTER THE START OF THE NEXT GROWING SEASON PROVIDED THAT ACCEPTANCE CONDITIONS ARE FULFILLED.
10. ANY PLANTING OR LANDSCAPING WORK THAT IS REJECTED AT THE FINAL INSPECTION WILL BE CORRECTED IN A TIMELY MANNER AT CONTRACTOR'S EXPENSE.
11. REJECTED PLANT MATERIAL MUST BE REMOVED FROM THE SITE WITHIN ONE WORKING DAY.
12. WATER TREES ONCE A WEEK FOR FIRST 4 WEEKS AND THEN SUFFICIENTLY THEREAFTER TO MAINTAIN OPTIMUM GROWING WITHIN THE FIRST 2 YEARS AFTER PLANTING. APPLY SUFFICIENT WATER PER APPLICATION TO OBTAIN MOISTURE PENETRATION OF 75-100MM. ENSURE ADEQUATE MOISTURE IN ROOT ZONE AT FREEZE-UP.
13. ALL TOPSOIL TO BE NEW TOPSOIL TO BE FRIABLE. SOIL TEXTURE TO CONSIST OF 45% SAND, 30% SILT, AND 20% CLAY AND CONTAIN A MAXIMUM OF 0% ORGANIC MATTER. TOPSOIL MUST BE FREE FROM SUBSOIL, ROOTS, GRASS, WEEDS, TOXIC MATERIALS, STONES, FOREIGN OBJECTS AND WITH AN ACIDITY RANGE (PH) OF 5.5 TO 7.5.
14. SOIL MIXTURE FOR PLANTING TO BE 50% SANDY TOPSOIL, 25% PEATMOSS, 25% WELL ROTTED MANURE, AND 500G BONEMEAL PER CUBIC METRE OF PLANTING SOIL.
15. CONTRACTOR TO CHECK QUANTITIES AND REPORT ANY DISCREPANCIES TO THE LANDSCAPE ARCHITECT IMMEDIATELY. PLANT QUANTITIES INDICATED ON THE PLAN SUPERCEDE THE TOTALS IN THE PLANT LIST.



NO.	REVISIONS	DATE
1	ISSUED FOR SPA	26 02 12
2	ISSUED FOR SPA PIPE-CONSULT	26 07 03

REPRODUCTION OR DISTRIBUTION FOR PURPOSES OTHER THAN AUTHORIZED BY FRP INC. IS PROHIBITED. ANY REPRODUCTION OR DISTRIBUTION OF THIS DRAWING WITHOUT THE WRITTEN PERMISSION OF FRP INC. IS PROHIBITED. ANY REPRODUCTION OR DISTRIBUTION OF THIS DRAWING WITHOUT THE WRITTEN PERMISSION OF FRP INC. IS PROHIBITED.

FRP INC. LANDSCAPE ARCHITECTS
1875 DAVENPORT ROAD
TORONTO, ONT. M6N 1B9
www.frpinc.ca

PLANT LIST

SYMBOL	BOTANICAL NAME	COMMON NAME	QUANTITY	SIZE	CONDITION	COMMENTS	CANOPY STATURE (S,M,L)
TREES							
AR	Acer rubrum	Red Maple	3	70mm Cal.	B&B		L
AA	Ametelachne arborosa	Downy serviceberry	3	3.0m ht.	B&B	3 stem clump	L
CC	Carpinus cardifolia	Blue Beech	2	50mm Cal.	B&B		S
CO	Celtis occidentalis	Common Hackberry	8	70mm Cal.	B&B		S
CC	Cercis canadensis	Eastern Redbud	3	3.0m ht.	B&B		S
FG	Fagus grandifolia	American Beech	3	70mm Cal.	B&B	3 stem clump	L
OB	Ginkgo biloba	Maidenhair	8	70mm Cal.	B&B		L
GD	Gymnocladia dioica	Kentucky cobwebtree	11	70mm Cal.	B&B	male	L
GT	Gleditsia triacanthos 'Shademaster'	Shademaster Honey Locust	11	70mm Cal.	B&B		M
LT	Liriodendron tulipifera	Tulip tree	10	70mm Cal.	B&B		L
NS	Nyssa sylvatica	Black gum	10	70mm Cal.	B&B		M
OV	Ostrya virginiana	Ironwood	6	50mm Cal.	B&B		M
PE	Pinus strobus	Eastern White Pine	4	70mm Cal.	B&B		L
PR	Pinus resinosa	Red Pine	4	3.0m ht.	B&B		L
QM	Quercus macrocarpa	Burr Oak	3	70mm Cal.	B&B		L
QR	Quercus rubra	Red Oak	8	70mm Cal.	B&B		L
TO	Taxus occidentalis	Eastern White Cedar	11	3.0m ht.	B&B		N/A
TA	Tilia americana	Basswood	10	70mm Cal.	B&B		L
CONIFEROUS SHRUBS							
Pm	Pinus mugo 'Jakobsen'	Jakobsen Mugo Pine	TBD	3 Gal.	Potted		
Pgg	Picea purgens 'Globosa'	Dwarf Blue Spruce	TBD	3 Gal.	Potted		
DECIDUOUS SHRUBS							
Ca	Ceanothus americana	New Jersey Tea	TBD	3 Gal.	Potted		
DI	Desmodium illinoense	Burnt Honeysuckle	TBD	3 Gal.	Potted		
Po	Physocarpus opulifolius	Common Ninebark	TBD	3 Gal.	Potted		
PERENNIALS							
am	Achillea millefolium	Common Yarrow	TBD	1 Gal.	Potted		
ga	Gaillardia aristata	Blanket Flower	TBD	1 Gal.	Potted		
gm	Cerium maculatum	Wine Cerium	TBD	1 Gal.	Potted		
ls	Liatris spicata	Dense Blazing Star	TBD	1 Gal.	Potted		
pa	Panoxia arifolia 'Derim N Lace'	Russian Sage	TBD	1 Gal.	Potted		
rh	Rudbeckia hirta	Black-eyed Suson	TBD	1 Gal.	Potted		
ORNAMENTAL GRASSES							
ca	Calamagrostis acutiflora 'Karl Foerster'	Feather Reed Grass	TBD	2 Gal.	Potted		
sh	Sporobolus heterolepis	Prairie Dropseed	TBD	2 Gal.	Potted		
ss	Schizachyrium scoparium	Little Bluestem	TBD	2 Gal.	Potted		

NORTH OAKVILLE #3 CATHOLIC ELEMENTARY SCHOOL

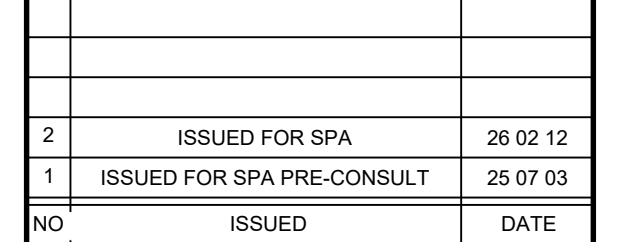
SP 8600 POST ROAD NORTH OAKVILLE, ON

LEGAL DESCRIPTION:
Block 7, Registered Plan 20M-1250 AND
Block 11, Registered Plan 20M-1302
TOWN OF OAKVILLE
REGIONAL MUNICIPALITY OF HALTON

TENDER NO. RFT



PLANTING PLAN

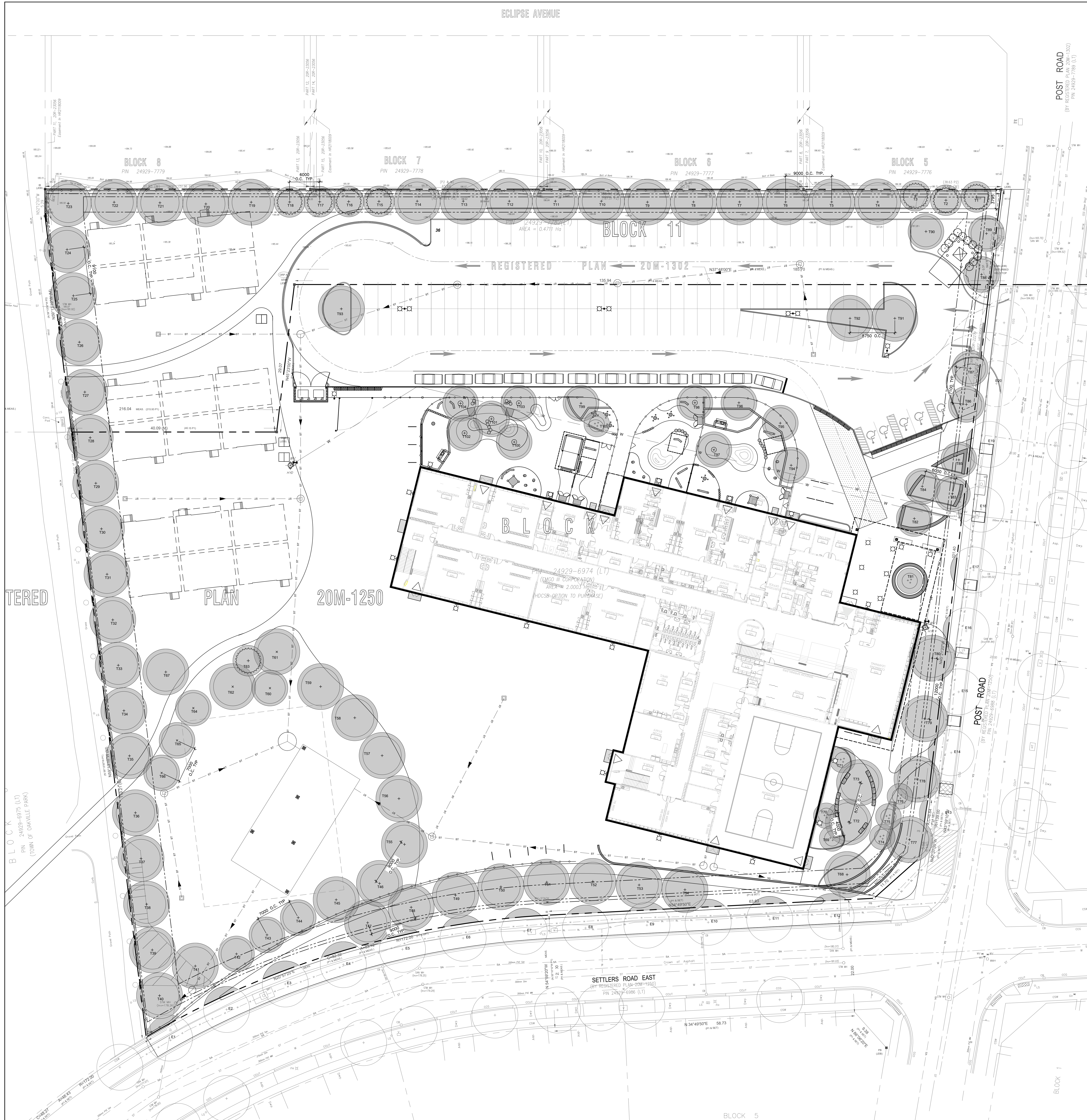


SCALE: 1:200 PROJECT: 251592

DATE: JULY 2005 DRAWING: L200

DRAWN: KH CHECKED: KH

PRINT DATE:



LEGEND

- SMALL DECIDUOUS TREE
- MEDIUM DECIDUOUS TREE
- LARGE DECIDUOUS TREE
- LARGE CONIFEROUS TREE

KEY PLAN

CANOPY SUMMARY

Total Site Area	24 690 m ²
Canopy Coverage Target by Land Use	25.00 %
Proposed Site Canopy Cover by 2057	21.96 %

Parking Area Summary

Total Parking Spaces Proposed	121
Total # of Trees in or within 5m of Parking Area	15

TREE CANOPY CALCULATION CHART

TREE #	BOTANICAL NAME	CATEGORY	MINIMUM SOIL VOLUME PER TREE (m ³)	SHARED VOLUME Y/N	CANOPY AREA (m ²)	CANOPY AREA SUBTOTAL (m ²)
T1	Pinus resinosa	L	18	Y	28	28
T2	Pinus resinosa	L	18	Y	28	28
T3	Pinus resinosa	L	18	Y	28	28
T4	Quercus rubra	L	18	Y	64	64
T5	Quercus rubra	L	18	Y	64	64
T6	Quercus rubra	L	18	Y	64	64
T7	Tilia americana	L	18	Y	64	64
T8	Tilia americana	L	18	Y	64	64
T9	Tilia americana	L	18	Y	64	64
T10	Tilia americana	L	18	Y	64	64
T11	Tilia americana	L	18	Y	64	64
T12	Quercus macrocarpa	L	18	Y	64	64
T13	Quercus macrocarpa	L	18	Y	64	64
T14	Quercus macrocarpa	L	18	Y	64	64
T15	Pinus strobus	L	18	Y	28	28
T16	Pinus strobus	L	18	Y	28	28
T17	Pinus strobus	L	18	Y	28	28
T18	Tilia americana	L	18	Y	64	64
T19	Tilia americana	L	18	Y	64	64
T20	Tilia americana	L	18	Y	64	64
T21	Tilia americana	L	18	Y	64	64
T22	Tilia americana	L	18	Y	64	64
T23	Tilia americana	L	18	Y	64	64
T24	Celtis occidentalis	L	18	Y	64	64
T25	Celtis occidentalis	L	18	Y	64	64
T26	Celtis occidentalis	L	18	Y	64	64
T27	Liriodendron tulipifera	L	18	Y	64	64
T28	Liriodendron tulipifera	L	18	Y	64	64
T29	Liriodendron tulipifera	L	18	Y	64	64
T30	Liriodendron tulipifera	L	18	Y	64	64
T31	Liriodendron tulipifera	L	18	Y	64	64
T32	Liriodendron tulipifera	L	18	Y	64	64
T33	Gymnocladus dioica	L	18	Y	64	64
T34	Gymnocladus dioica	L	18	Y	64	64
T35	Gymnocladus dioica	L	18	Y	64	64
T36	Acer rubrum	L	18	Y	64	64
T37	Acer rubrum	L	18	Y	64	64
T38	Acer rubrum	L	18	Y	64	64
T39	Quercus rubra	L	18	Y	64	64
T40	Quercus rubra	L	18	Y	64	64
T41	Quercus rubra	L	18	Y	64	64
T42	Nyssa sylvatica	M	12	Y	38	38
T43	Nyssa sylvatica	M	12	Y	38	38
T44	Nyssa sylvatica	M	12	Y	38	38
T45	Quercus rubra	L	18	Y	64	64
T46	Quercus rubra	L	18	Y	64	64
T47	Gymnocladus dioica	L	18	Y	64	64
T48	Gymnocladus dioica	L	18	Y	64	64
T49	Gymnocladus dioica	L	18	Y	64	64
T50	Gymnocladus dioica	L	18	Y	64	64
T51	Gymnocladus dioica	L	18	Y	64	64
T52	Ginkgo biloba	L	18	Y	64	64
T53	Ginkgo biloba	L	18	Y	64	64
T54	Ginkgo biloba	L	18	Y	64	64
T55	Celtis occidentalis	L	18	Y	64	64
T56	Celtis occidentalis	L	18	Y	64	64
T57	Celtis occidentalis	L	18	Y	64	64
T58	Celtis occidentalis	L	18	Y	64	64
T59	Celtis occidentalis	L	18	Y	64	64
T60	Ostrya virginiana	M	12	Y	35	35
T61	Liriodendron tulipifera	L	18	Y	64	64
T62	Liriodendron tulipifera	L	18	Y	64	64
T63	Pinus resinosa	L	18	Y	18	18
T64	Nyssa sylvatica	M	12	Y	38	38
T65	Nyssa sylvatica	M	12	Y	38	38
T66	Nyssa sylvatica	M	12	Y	38	38
T67	Fagus americana	L	18	Y	64	64
T68	Fagus americana	L	18	Y	64	64
T69	Cercis canadensis	S	6	Y	11	11
T70	Cercis canadensis	S	6	Y	10	10
T71	Cercis canadensis	S	6	Y	15	15
T72	Liriodendron tulipifera	L	18	Y	62	62
T73	Liriodendron tulipifera	L	18	Y	62	62
T74	Amelanchier arborea	S	6	Y	13	13
T75	Amelanchier arborea	S	6	Y	12	12
T76	Amelanchier arborea	S	6	Y	17	17
T77	Ginkgo biloba	L	24	N	64	64
T78	Ginkgo biloba	L	24	N	64	64
T79	Ginkgo biloba	L	24	N	64	64
T80	Ginkgo biloba	L	24	N	64	64
T81	Carpinus caroliniana	S	6	N	20	20
T82	Nyssa sylvatica	M	8	N	38	38
T83	Nyssa sylvatica	M	12	Y	38	38
T84	Nyssa sylvatica	M	12	Y	38	38
T85	Nyssa sylvatica	M	8	N	38	38
T86	Ostrya virginiana	M	12	Y	38	38
T87	Ostrya virginiana	M	12	Y	38	38
T88	Ostrya virginiana	M	12	Y	38	38
T89	Ostrya virginiana	M	12	Y	38	38
T90	Ostrya virginiana	M	12	Y	38	38
T91	Gymnocladus dioica	L	18	Y	64	64
T92	Gymnocladus dioica	L	18	Y	64	64
T93	Gymnocladus dioica	L	18	Y	64	64
T94	Gleditsia triacanthos 'Shademaster'	M	12	Y	38	38
T95	Gleditsia triacanthos 'Shademaster'	M	12	Y	38	38
T96	Gleditsia triacanthos 'Shademaster'	M	12	Y	38	38
T97	Gleditsia triacanthos 'Shademaster'	M	15	N	38	38
T98	Gleditsia triacanthos 'Shademaster'	M	12	Y	38	38
T99	Gleditsia triacanthos 'Shademaster'	M	12	Y	38	38
T100	Gleditsia triacanthos 'Shademaster'	M	12	Y	38	38
T101	Gleditsia triacanthos 'Shademaster'	M	12	Y	33	33
T102	Gleditsia triacanthos 'Shademaster'	M	12	Y	38	38
T103	Gleditsia triacanthos 'Shademaster'	M	12	Y	38	38
T104	Gleditsia triacanthos 'Shademaster'	M	12	Y	38	38
T105	Carpinus caroliniana	S	6	N	18	18

TREE CANOPY OVERHANGING SITE

TREE #	BOTANICAL NAME	CANOPY AREA ON SITE (m ²)	CANOPY AREA SUBTOTAL (m ²)
E1	Celtis occidentalis	10	10
E2	Celtis occidentalis	10	10
E3	Quercus rubra	7	7
E4	Quercus rubra	8	8
E5	Ulmus Morton'	10	10
E6	Ulmus Morton'	5	5
E7	Ulmus Morton'	5	5
E8	Ulmus americana	6	6
E9	Ulmus americana	6	6
E10	Ulmus americana	6	6
E11	Ulmus americana	6	6
E12	Ulmus americana	6	6
E13	Acer x freemanii	5	5
E14	Acer x freemanii	6	6
E15	Acer x freemanii	6	6
E16	Celtis occidentalis	4	4
E17	Celtis occidentalis	4	4
E18	Celtis occidentalis	1	1
E19	Quercus rubra	2	2
E20	Quercus rubra	2	2

Subtotal of proposed canopy: 5299

Subtotal of street tree canopy (overhanging site): 125

TOTAL CANOPY AREA (m²): 5424

REVISIONS

NO.	REVISIONS	DATE
1	ISSUED FOR SPA	26 02 12
2	ISSUED FOR SPA PRE-CONSULT	25 07 03

MEMBER OF ASSOCIATION OF LANDSCAPE ARCHITECTS

NORTH OAKVILLE #3 CATHOLIC ELEMENTARY SCHOOL

SP