

ROBINSON STREET

UNIT 10

UNIT 9

UNIT 8

UNIT 7

UNIT 6

UNIT 5

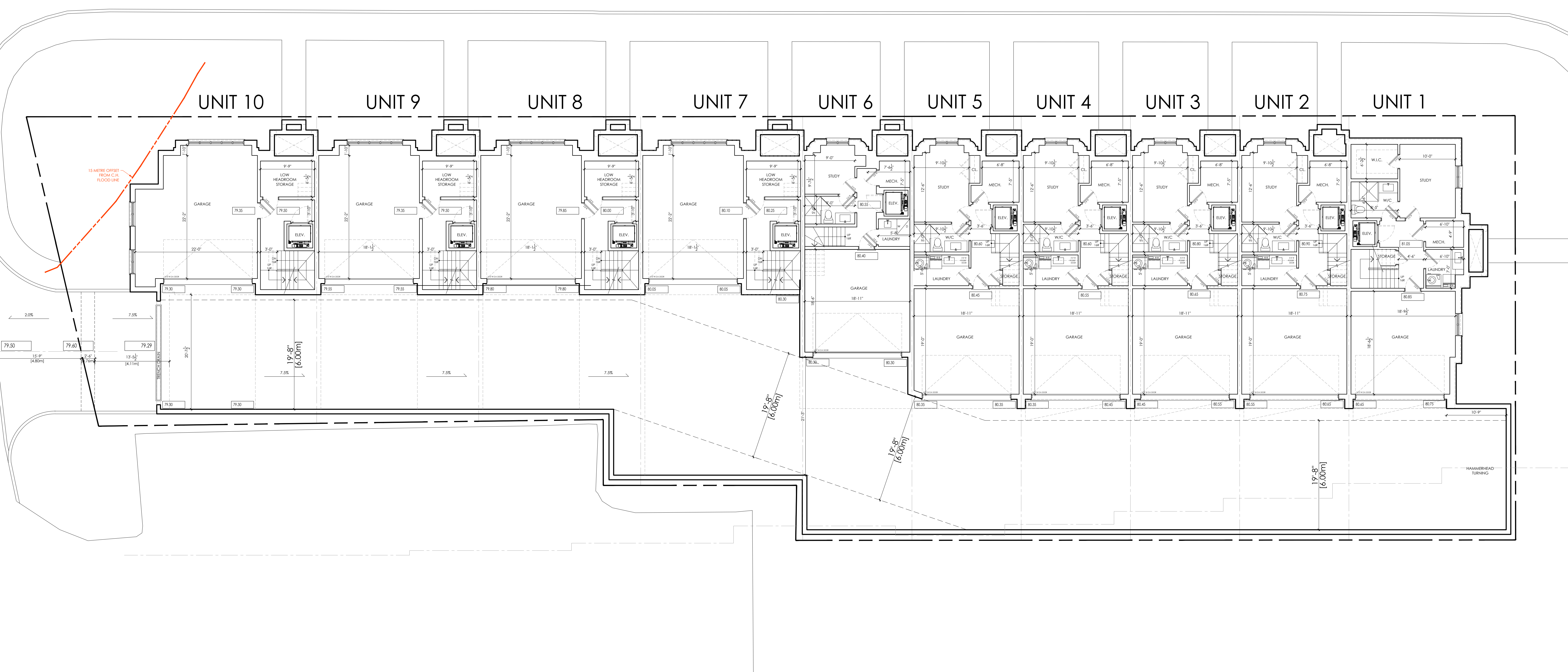
UNIT 4

UNIT 3

UNIT 2

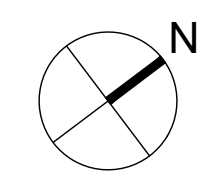
UNIT 1

15 METRE OFFSET FROM C.I. FLOOD LINE



ROSEVILLE PROPERTIES INC.
ROBINSON STREET
OAKVILLE, ONTARIO
MAY 12, 2022
2001

BASEMENT PLAN
SCALE: 1/8" = 1'-0"



ROBINSON STREET

268'-0"¹/₂
[81.69m]

UNIT 10

UNIT 9

UNIT 8

UNIT 7

UNIT 6

UNIT 5

UNIT 4

UNIT 3

UNIT 2

UNIT 1

241'-0"
[73.46m]

15 METRE OFFSET FROM C.I. FLOOD LINE

27'-10"
[8.48m]

48'-6"
[14.78m]

23'-8"
[7.22m]

120'-6"¹/₂
[36.74m]

120'-5"¹/₂
[36.72m]

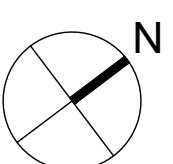
6'-0"
[1.83m]

68 - 70
NAVY STREET

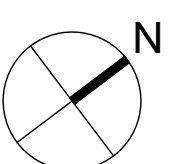
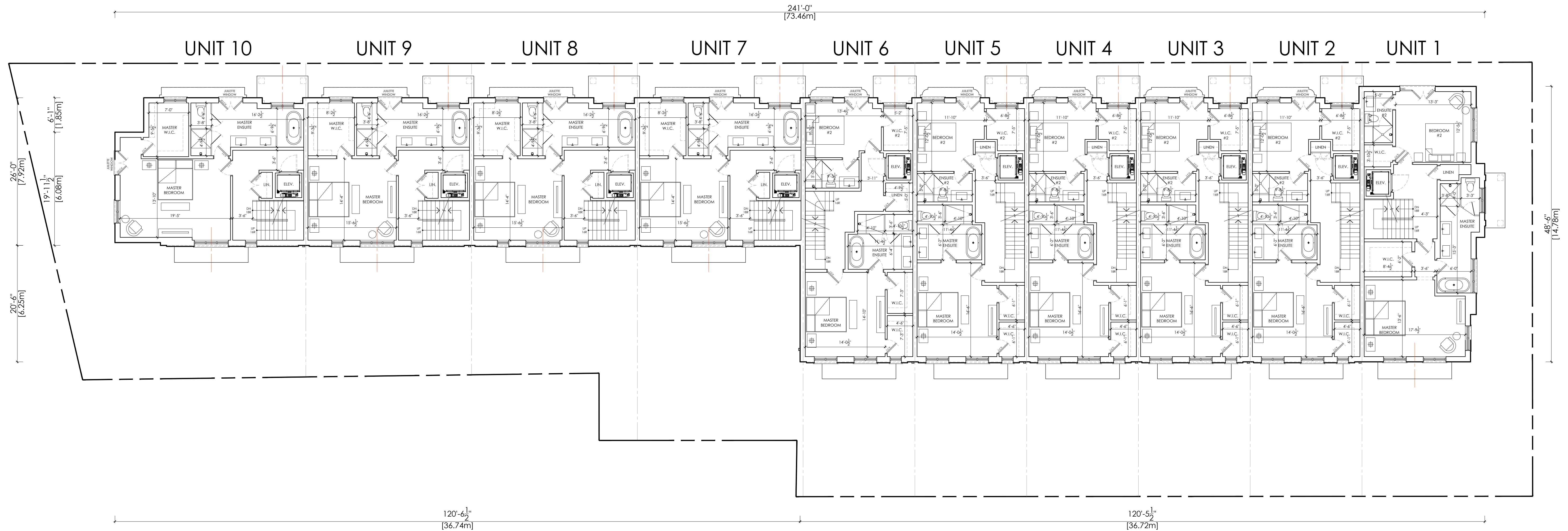
ROSEVILLE PROPERTIES INC.

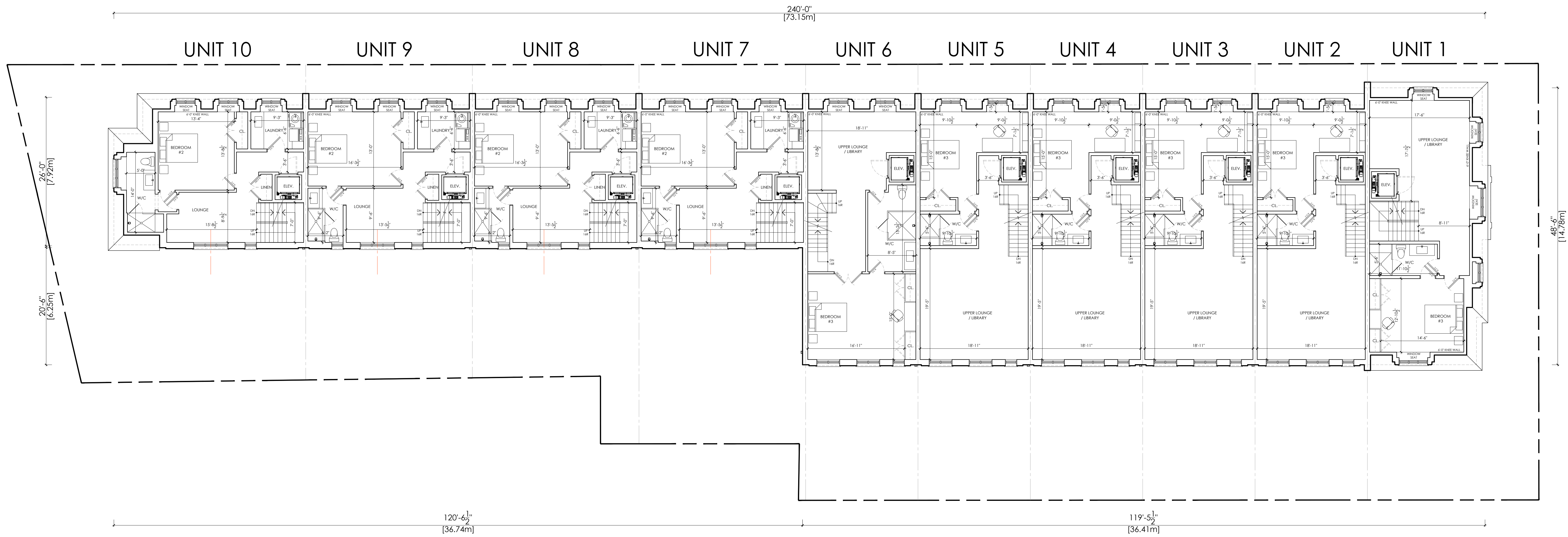
ROBINSON STREET
OAKVILLE, ONTARIO
MAY 12, 2022
2001

GROUND FLOOR PLAN
SCALE: 1/8" = 1'-0"



RICHARD WENGLER
ARCHITECT INC.

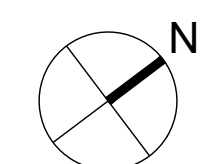




ROSEVILLE PROPERTIES INC.

ROBINSON STREET
 OAKVILLE, ONTARIO
 MAY 12, 2022
 2001

THIRD FLOOR PLAN
 SCALE: 1/8" = 1'-0"



UNIT 10

UNIT 9

UNIT 8

UNIT 7

UNIT 6

UNIT 5

UNIT 4

UNIT 3

UNIT 2

UNIT 1

