

LOCKERS LEGEND		PARKING LEGEND	
HORIZONTAL BIKE LOCKER		residential	retail
VERTICAL BIKE LOCKER		visitor	barrier free type A
HORIZONTAL STACKED BIKE LOCKER		barrier free type B	
BIKE LOCKER			
CONVEX MIRROR (C.M)		PARKING SPACE OBSTRUCTION LEGEND 2600 TYP. 2900 min. 3200 min. 	

This drawing, as an instrument of service, is provided by and is the property of Graziani + Corazza Architects Inc. The contractor must verify and accept responsibility for all dimensions and conditions on site and must notify Graziani + Corazza Architects Inc. of any variations from the supplied information. Graziani + Corazza Architects Inc. is not responsible for the accuracy of survey, structural, mechanical, electrical, etc., engineering information shown on this drawing. Refer to the appropriate engineering drawings before proceeding with the work. Construction must conform to all applicable codes and requirements of the authorities having jurisdiction. Unless otherwise noted, no investigation has been undertaken or reported on by this office in regards to the environmental condition of this site.

This drawing is not to be scaled. All architectural symbols indicated on this drawing are graphic representations only.

Conditions for electronic information transfer

Electronic information is supplied to the other associated firms to assist them in the execution of their work. The recipient firm must determine the completeness/appropriateness/relevance of the information in respect to their particular responsibility.

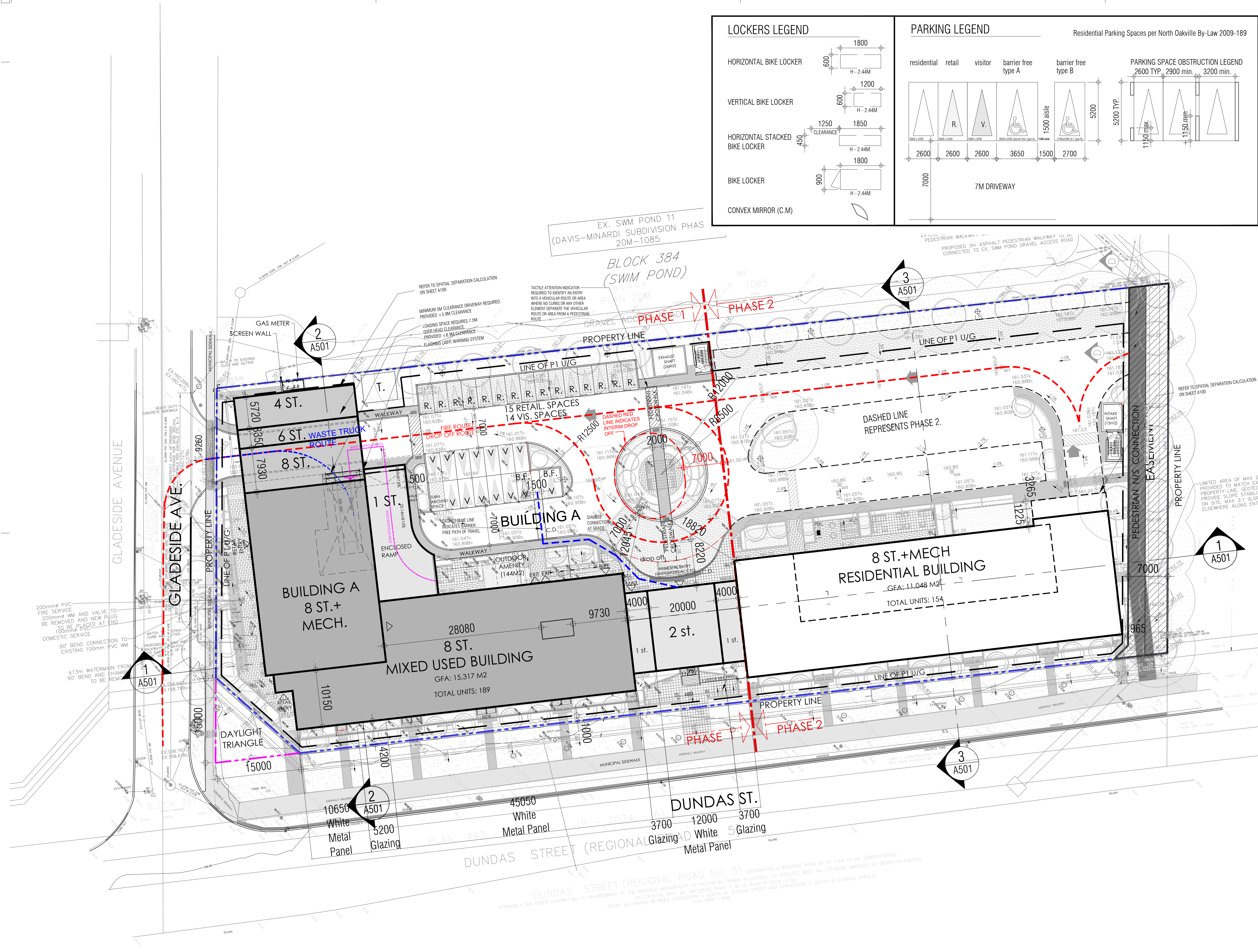
Graziani + Corazza Architects Inc. shall not be responsible for:

- Errors, omissions, incompleteness due to loss of information in whole or part when information is transferred.
- Transmission of any virus or damage to the receiving electronic system when information is transferred.

1. NOV.02.2022 ISSUED FOR SPA J. CHL
 2. JULY.07.2023 ISSUED FOR SPA J. CHL
 3. OCT.19.2023 ISSUED FOR SPA J. CHL
 4. MAR.01.2024 ISSUED FOR SPA J. CHL

General notes:

- Reinforced heavy duty concrete staging area (change in grade not greater than ±2%). Constructed to support a minimum of fully loaded waste truck (35 tonnes).
- A trained staff member is to be present on site at all times during City solid waste refuse collection to maneuver the container bins from garbage/recycling storage room to the collection pad and in front of the collection vehicle, return the bins to the respective storage rooms immediately upon collection and act as a flagsperson when the City's vehicle and other loading trucks are reversing.
- Snow storage is to be trucked off site.
- waste collection will be provided via front-end garbage collection. The collection of residential organic, and recycling materials will occur via totes.
- Flashing lights and sign at the top of the parking garage ramp to alert motorists coming up to watch for large vehicles loading operations going on head



issued for revisions

1	2	3
---	---	---

GRAZIANI + CORAZZA ARCHITECTS INC.

8400 JANE ST. BUILDING D SUITE 300 CONCORD, ONTARIO L4K 4L6
 T. 905.795.2601 F. 905.795.2844 WWW.GC-ARCHITECTS.COM

PROPOSED DEVELOPMENT

455-465 DUNDAS STREET WEST

RIONE DEVELOPMENT CORP. ONTARIO

Project Architect: J. Chimenti
 Assistant Designer: A. Hassan / B. Dadgostar
 Drawn By: B. Dadgostar
 Checked By: D. Biase
 Plot Date: MAR.26.2024
 Job #: 1944.21

PHASE 1 INTERIM SITE PLAN

1:300 A102

TITLEBLOCK SIZE: 610 x 900

GENERAL NOTES: for Waste Management

- This proposal was created to ensure that all Recyclable Material and Organic Waste systems are as convenient to use as Garbage systems.
- Collection point locations (Tri-Sorter Waste Chutes) are accessible to all residents/occupants and do not hinder residents/occupants from participating in Recyclable Material and Organic Waste programs and comply with Ontario's Accessibility for Ontarians with Disabilities Act.
- All applicable health and safety considerations are incorporated into the design for workers handling or moving Waste Receptacles and comply with the Ontario Health and Safety Act.
- The Waste storage area will be constructed to prevent pests.
- The storage area will be constructed of a material that may be easily cleaned and shall have an area to wash waste receptacles including a water hose connection and floor drain.
- The Waste storage area will have adequate and well maintained mechanical ventilation.
- The Waste storage area will have an air conditioning system to cool the room during hot weather periods.
- The Waste storage area will have sprinkler and fire prevention systems in accordance with all Ontario Fire Code and Ontario Building Code requirements.
- The Compactor for garbage will be secured at all times with no general access.
- The dedicated Waste Collection Point will be adequately signed indicating that the area is a Waste Collection Point and there will be no parking or blocking of Waste Collection containers.
- The dedicated Waste Collection Point will be kept cleared of snow and ice so as not to pose a danger to the collection vehicle or property during collection.
- The dedicated storage areas are adequate to store Waste for a minimum of one week. - Meeting capacity requirements outlined in Section 1.8 of Development Design Guidelines for Source separation of Solid Waste (ROP Guidelines for Halton Region)

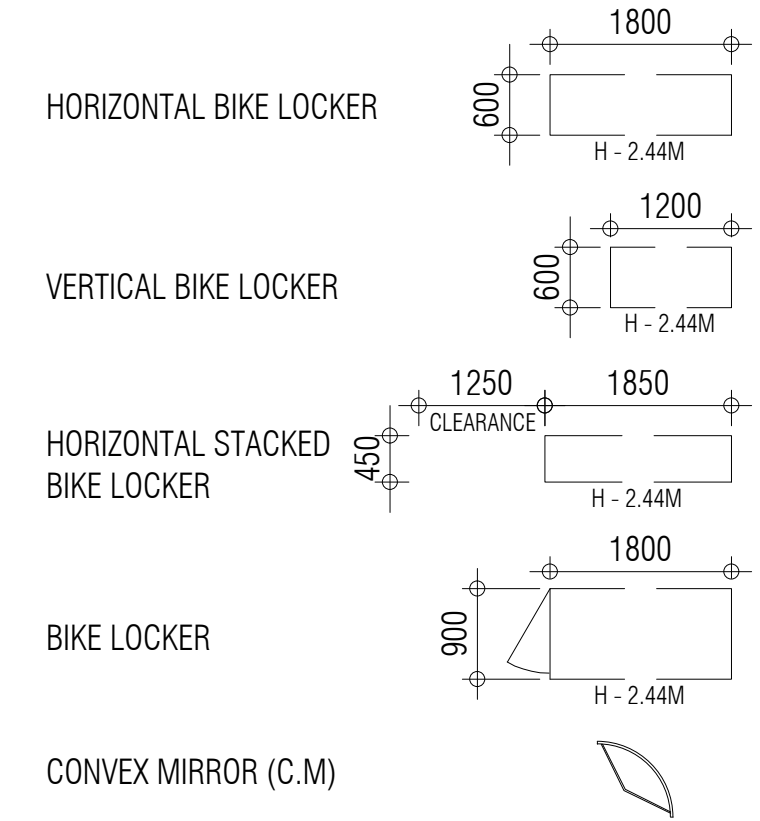
WASTE MANAGEMENT LEGEND

- TRAVEL PATH OF WASTE COLLECT. VEHICLE
- TRAVEL PATH OF WASTE BINS TO TYPE 'G' LOADING SPACE

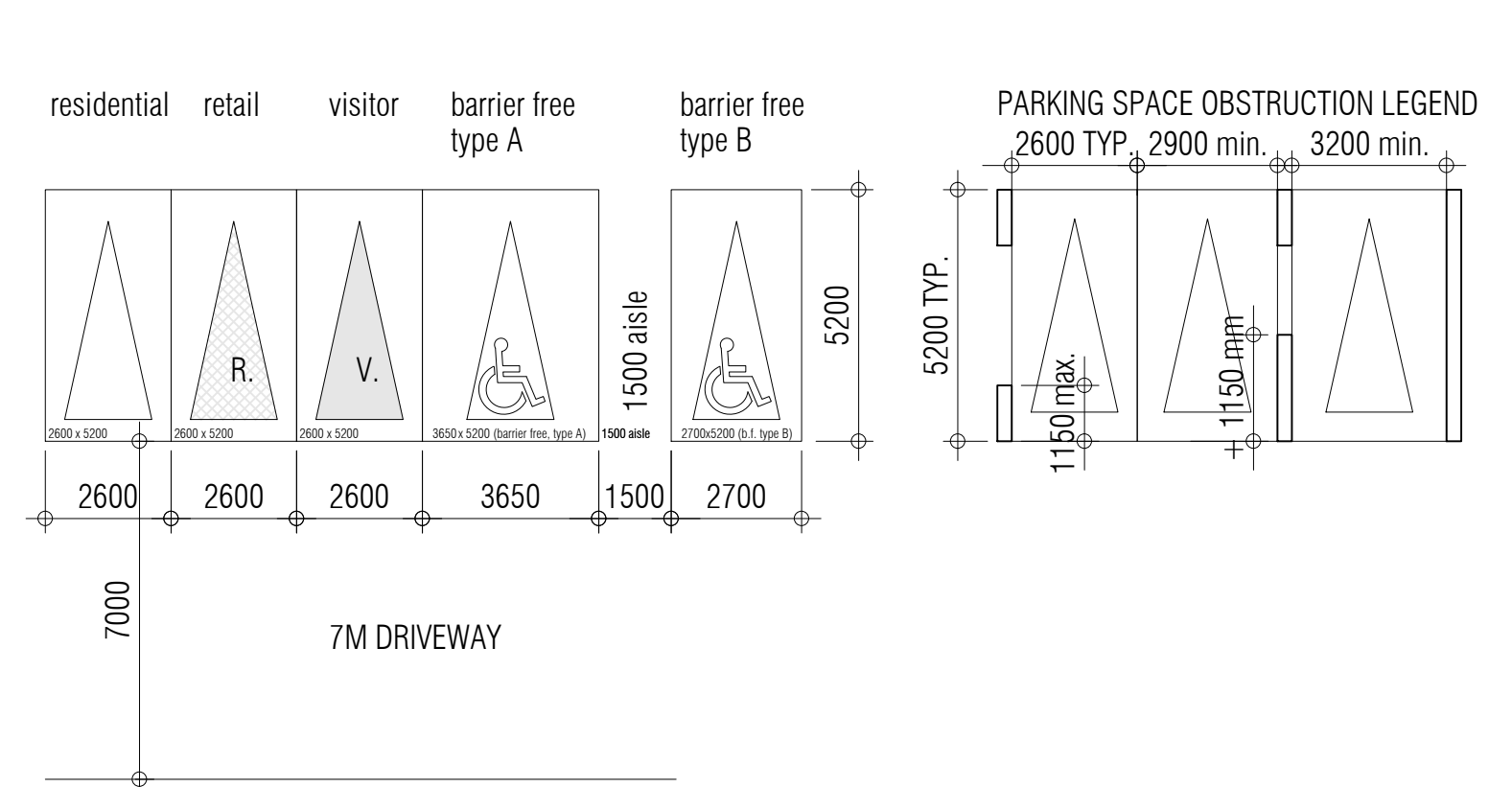
BUILDING A BINS	
# of Recycling Units	27
# of Organic Waste Units (semi-automated carts)	8
# of Bulk Waste Units (front end collection bins)	1

BUILDING B BINS	
# of Recycling Units	22
# of Organic Waste Units (semi-automated carts)	6
# of Bulk Waste Units (front end collection bins)	1

LOCKERS LEGEND



PARKING LEGEND



This drawing, as an instrument of service, is provided by and is the property of Graziani + Corazza Architects Inc. The contractor must verify and accept responsibility for all dimensions and conditions on site and must notify Graziani + Corazza Architects Inc. of any variations from the supplied information. Graziani + Corazza Architects Inc. is not responsible for the accuracy of survey, structural, mechanical, electrical, etc., engineering information shown on this drawing. Refer to the appropriate engineering drawings before proceeding with the work. Construction must conform to all applicable codes and requirements of the authorities having jurisdiction. Unless otherwise noted, no investigation has been undertaken or reported on by this office in regards to the environmental condition of this site.

This drawing is not to be scaled. All architectural symbols indicated on this drawing are graphic representations only.

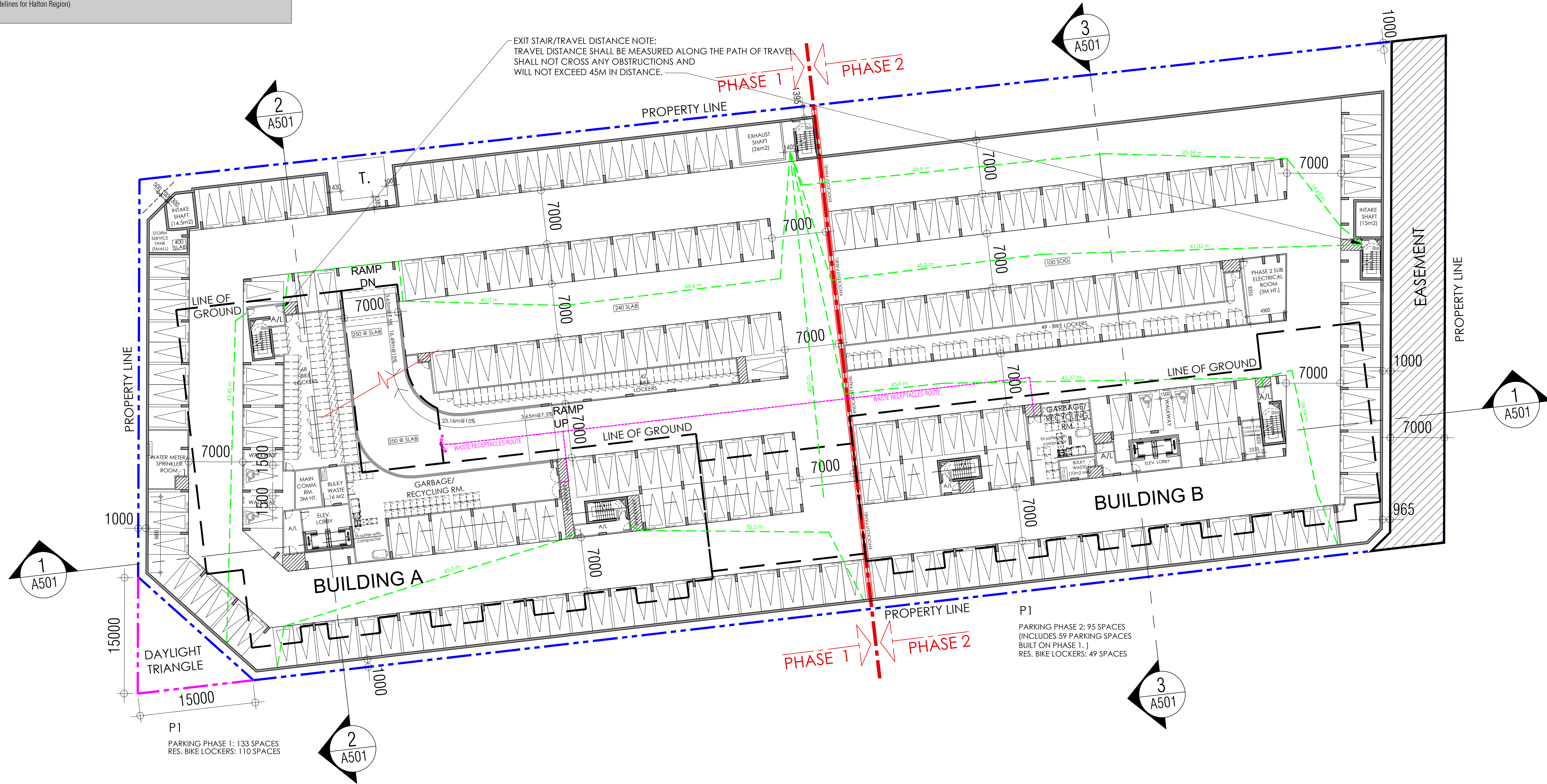
Conditions for electronic information transfer

Electronic information is supplied to the other associated firms to assist them in the execution of their work/phase. The recipient firms must determine the completeness/appropriateness/relevance of the information in respect to their particular responsibility.

Graziani + Corazza Architects Inc. shall not be responsible for:

- Errors, omissions, incompleteness due to loss of information in whole or part when information is transferred.
- Transmission of any virus or damage to the receiving electronic system when information is transferred.

- NOV.02.2022 ISSUED FOR SPA J. CHL
- JULY.07.2023 ISSUED FOR SPA J. CHL
- OCT.19.2023 ISSUED FOR SPA J. CHL
- MAR.01.2024 ISSUED FOR SPA J. CHL



issued for revisions

GRAZIANI + CORAZZA ARCHITECTS INC.

8400 JANE ST. BUILDING D SUITE 300 CONCORD, ONTARIO L4K 4L8
T. 905.795.2844 F. 905.795.2844 WWW.GC-ARCHITECTS.COM

PROPOSED DEVELOPMENT

455-465 DUNDAS STREET WEST

RIONE DEVELOPMENT CORP. ONTARIO

Project Architect: J. Chimienti
Assistant Designer: A. Hassan / B. Dodgostar
Drawn By: B. Dodgostar
Checked By: D. Biase
Plot Date: MAR.26.2024
Job #: 1944.21

WASTE MANAGEMENT PLAN
P1 FLOOR PLAN

BIRD FRIENDLY TREATMENT
 LOW REFLECTANCE SPANDREL MATERIALS
 VISUAL MARKERS APPLIED TO GLASS WITH A MAXIMUM SPACING OF 100MM VERTICALLY
 BUILDING INTEGRATED STRUCTURES TO MINIMIZE REFLECTIONS ON GLASS SURFACES

This drawing, as an instrument of service, is provided by and is the property of Graziani + Corazza Architects Inc. The contractor must verify and accept responsibility for all dimensions and conditions on site and must notify Graziani + Corazza Architects Inc. of any variations from the supplied information. Graziani + Corazza Architects Inc. is not responsible for the accuracy of survey, structural, mechanical, electrical, etc., engineering information shown on this drawing. Refer to the appropriate engineering drawings before proceeding with the work. Construction must conform to all applicable codes and requirements of the authorities having jurisdiction. Unless otherwise noted, no investigation has been undertaken or reported on by this office in regards to the environmental condition of this site.

This drawing is not to be scaled. All architectural symbols indicated on this drawing are graphic representations only.

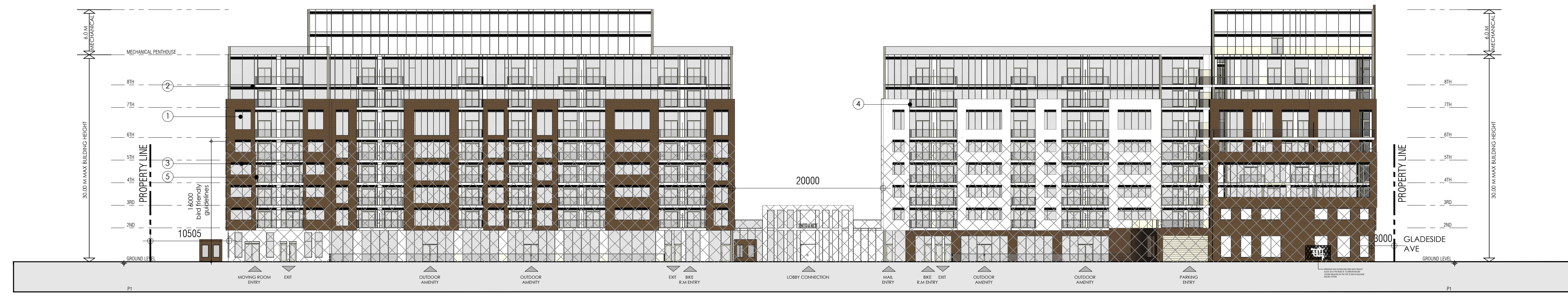
Conditions for electronic information transfer
 Electronic information is supplied to the other associated firms to assist them in the execution of their work/phase. The recipient firms must determine the completeness/appropriateness/relevance of the information in respect to their particular responsibility.

Graziani + Corazza Architects Inc. shall not be responsible for:
 1. Errors, omissions, incompleteness due to loss of information in whole or part when information is transferred.
 2. Transmission of any virus or damage to the receiving electronic system when information is transferred.

- NOV.02.2022 ISSUED FOR SPA J. CHL
- JULY.07.2023 ISSUED FOR SPA J. CHL
- OCT.19.2023 ISSUED FOR SPA J. CHL
- MAR.01.2024 ISSUED FOR SPA J. CHL



SOUTH ELEVATION



NORTH ELEVATION

MATERIAL LEGEND		
1	GLASS 1 MANUFACTURER: DESCRIPTION: CLEAR VISION	
2	SPANDREL PANEL MANUFACTURER: DESCRIPTION: WHITE	
3	LOUVER MANUFACTURER: DESCRIPTION: CHARCOAL	
4	METAL PANEL MANUFACTURER: DESCRIPTION: WHITE	
5	BRICK MANUFACTURER: DESCRIPTION: BROWN	
6	SPANDREL PANEL MANUFACTURER: DESCRIPTION: OPALUE WHITE	

issued for revisions

GRAZIANI + CORAZZA ARCHITECTS INC.

8400 JANE ST. BUILDING D SUITE 300 CONCORD, ONTARIO L4K 4L8
 T.905.795.2601 F.905.795.2844 WWW.GC-ARCHITECTS.COM

PROPOSED DEVELOPMENT

455-465 DUNDAS STREET WEST

RIONE DEVELOPMENT CORP. ONTARIO

Project Architect: J. Chimienti
 Assistant Designer: A. Hassan / B. Dodgostar
 Drawn By: B. Dodgostar
 Checked By: D. Biase
 Plot Date: MAR.26.2024
 Job #: 1944.21

NORTH & SOUTH ELEVATIONS

1:300 A401

TITLE BLOCK SIZE: 610 x 900

BIRD FRIENDLY TREATMENT
 LOW REFLECTANCE OPACQUE MATERIALS
 VISUAL MARKERS APPLIED TO GLASS WITH A MAXIMUM SPACING OF 100MM x 100MM
 BUILDING INTEGRATED STRUCTURES TO AVOID REFLECTIONS ON GLASS SURFACES

This drawing, as an instrument of service, is provided by and is the property of Graziani + Corazza Architects Inc. The contractor must verify and accept responsibility for all dimensions and conditions on site and must notify Graziani + Corazza Architects Inc. of any variations from the supplied information. Graziani + Corazza Architects Inc. is not responsible for the accuracy of survey, structural, mechanical, electrical, etc., engineering information shown on this drawing. Refer to the appropriate engineering drawings before proceeding with the work. Construction must conform to all applicable codes and requirements of the authorities having jurisdiction. Unless otherwise noted, no investigation has been undertaken or reported on by this office in regards to the environmental condition of this site.

This drawing is not to be scaled. All architectural symbols indicated on this drawing are graphic representations only.

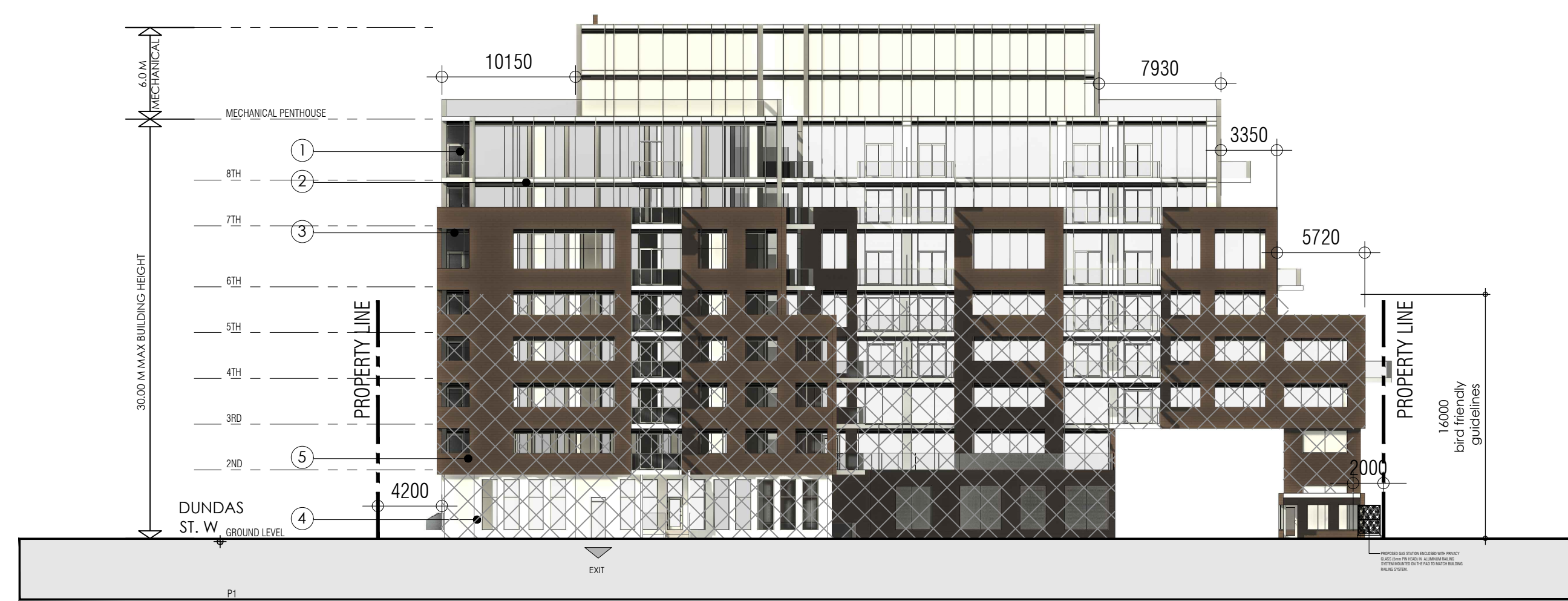
Conditions for electronic information transfer

Electronic information is supplied to the other associated firms to assist them in the execution of their work/phase. The recipient firms must determine the completeness/appropriateness/relevance of the information in respect to their particular responsibility.

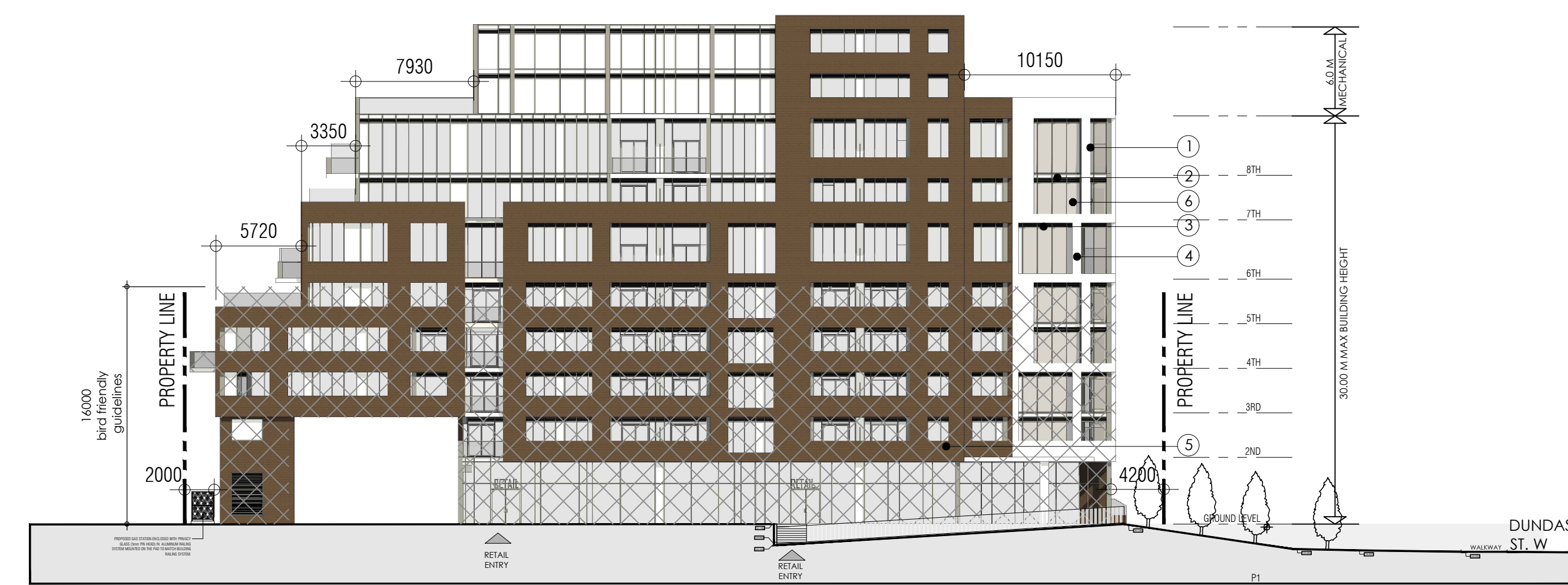
Graziani + Corazza Architects Inc. shall not be responsible for:

- Errors, omissions, incompleteness due to loss of information in whole or part when information is transferred.
- Transmission of any virus or damage to the receiving electronic system when information is transferred.

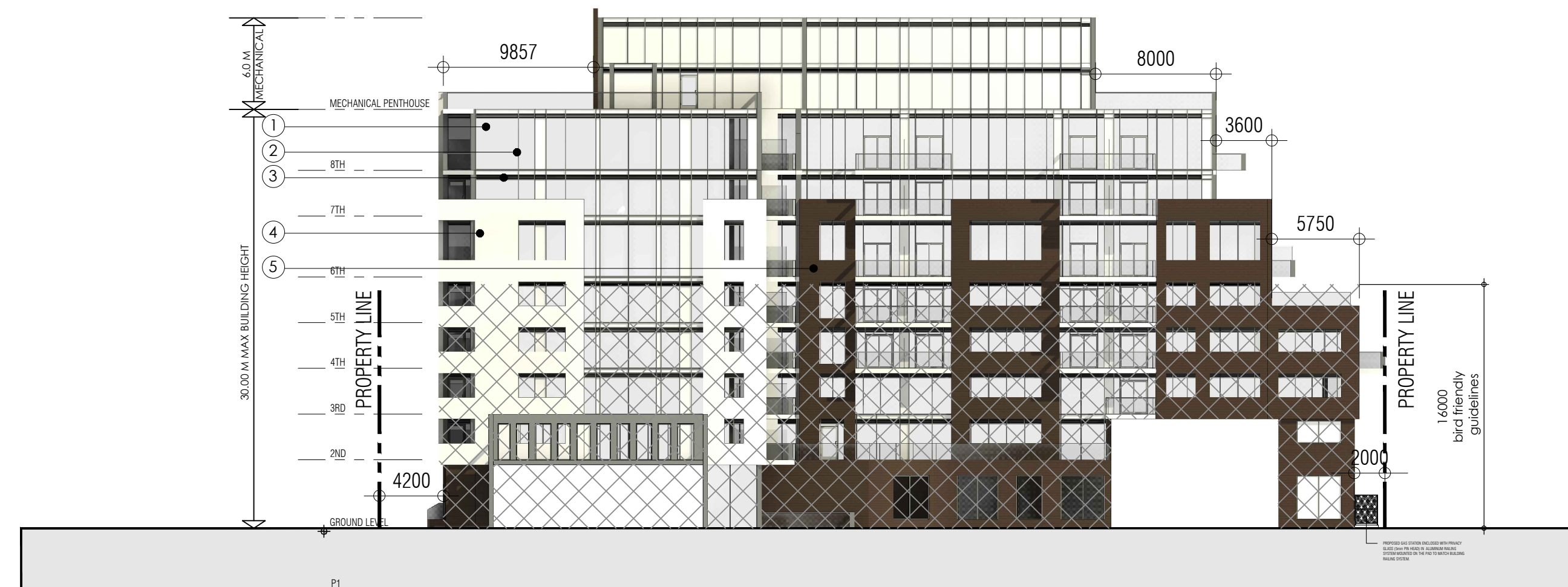
- NOV.02.2022 ISSUED FOR SPA J. CHL
- JULY.07.2023 ISSUED FOR SPA J. CHL
- OCT.19.2023 ISSUED FOR SPA J. CHL
- MAR.01.2024 ISSUED FOR SPA J. CHL



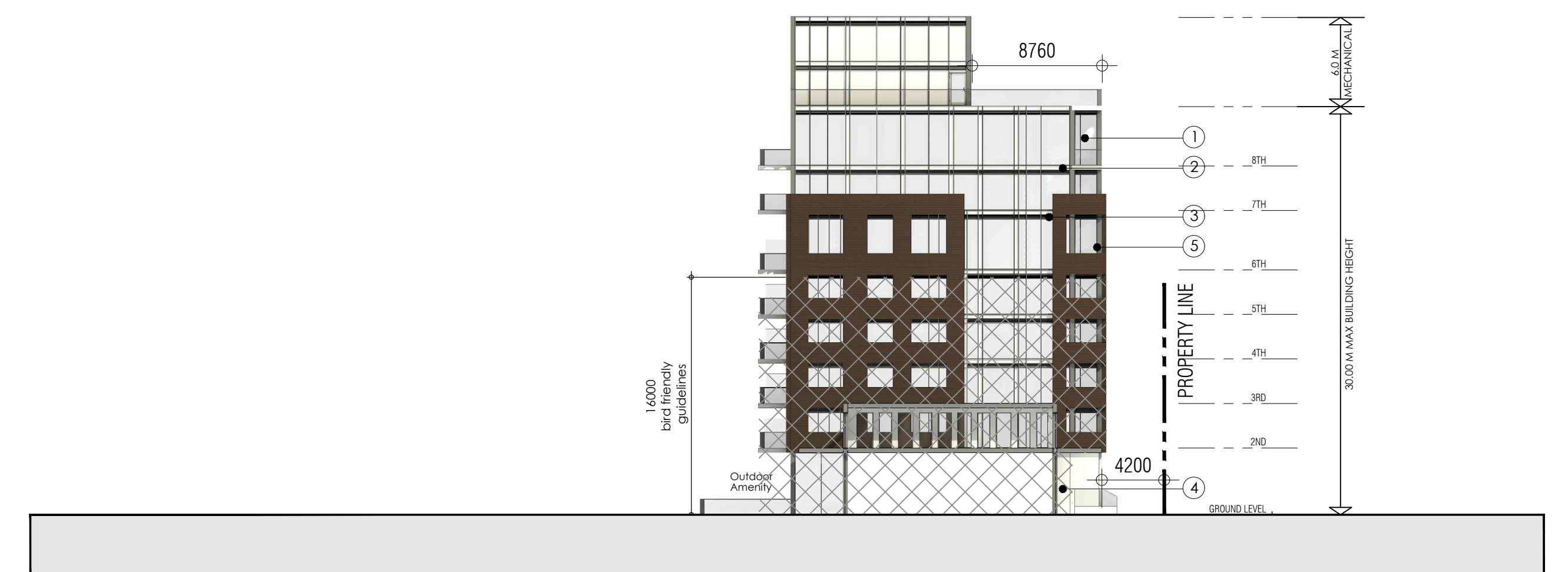
EAST ELEVATION



WEST ELEVATION



EAST ELEVATION - BUILDING A



WEST ELEVATION - BUILDING B

MATERIAL LEGEND

1	GLASS 1 MANUFACTURER: CLEAR VISION DESCRIPTION: CLEAR VISION	
2	SPANDREL PANEL MANUFACTURER: WHITE DESCRIPTION: WHITE	
3	LOUVER MANUFACTURER: CHARCOAL DESCRIPTION: CHARCOAL	
4	METAL PANEL MANUFACTURER: WHITE DESCRIPTION: WHITE	
5	BRICK MANUFACTURER: BROWN DESCRIPTION: BROWN	
6	SPANDREL PANEL MANUFACTURER: OPALQUE WHITE DESCRIPTION: OPALQUE WHITE	

issued for revisions

GRAZIANI + CORAZZA ARCHITECTS INC.

8400 JANE ST. BUILDING D SUITE 300 CONCORD, ONTARIO L4K 4L8
 T.905.795.2601 F.905.795.2844 WWW.GC-ARCHITECTS.COM

PROPOSED DEVELOPMENT

455-465 DUNDAS STREET WEST

RIONE DEVELOPMENT CORP. ONTARIO

Project Architect: J. Chimienti
 Assistant Designer: A. Hassan / B. Daggostar
 Drawn By: B. Daggostar
 Checked By: D. Biase
 Plot Date: MAR.26.2024
 Job #: 1944.21

WEST & EAST ELEVATIONS



AERIAL VIEW LOOKING NORTH EAST



AERIAL VIEW LOOKING NORTH WEST



AERIAL VIEW LOOKING SOUTH EAST



AERIAL VIEW LOOKING SOUTH WEST

This drawing, as an instrument of service, is provided by and is the property of Graziani + Corazza Architects Inc. The contractor must verify and accept responsibility for all dimensions and conditions on site and must notify Graziani + Corazza Architects Inc. of any variations from the supplied information. Graziani + Corazza Architects Inc. is not responsible for the accuracy of survey, structural, mechanical, electrical, etc., engineering information shown on this drawing. Refer to the appropriate engineering drawings before proceeding with the work. Construction must conform to all applicable codes and requirements of the authorities having jurisdiction. Unless otherwise noted, no investigation has been undertaken or reported on by this office in regards to the environmental condition of this site.

This drawing is not to be scaled. All architectural symbols indicated on this drawing are graphic representations only.

Conditions for electronic information transfer

Electronic information is supplied to the other associated firms to assist them in the execution of their work/review. The recipient firms must determine the completeness/appropriateness/relevance of the information in respect to their particular responsibility.

Graziani + Corazza Architects Inc. shall not be responsible for:

- Errors, omissions, incompleteness due to loss of information in whole or part when information is transferred.
- Transmission of any virus or damage to the receiving electronic system when information is transferred.

1.	NOV.02.2022	ISSUED FOR SPA	J. CHL
2.	JULY.07.2023	ISSUED FOR SPA	J. CHL
3.	OCT.19.2023	ISSUED FOR SPA	J. CHL
4.	MAR.01.2024	ISSUED FOR SPA	J. CHL

issued for revisions

GRAZIANI + CORAZZA ARCHITECTS INC.

8400 JANE ST. BUILDING D SUITE 300 CONCORD, ONTARIO L4K 4L8
 T.905.795.2801 F.905.795.2844 WWW.GC-ARCHITECTS.COM

PROPOSED DEVELOPMENT

455-465 DUNDAS STREET WEST

RIONE DEVELOPMENT CORP. ONTARIO

Project Architect: J. Chimienti
 Assistant Designer: A. Hassan / B. Dadgostar
 Drawn By: B. Dadgostar
 Checked By: D. Biase
 Plot Date: **MAR.26.2024**
 Job #: 1944.21

AERIAL VIEWS

N.T.S. **A601**