

**ARGO  
JOSHUA CREEK  
BLOCK 282**

**PRELIMINARY MIXED USE  
CONCEPT PLAN**

*For Discussion Purposes Only*

**Unit Count**

6-Storey Mixed Use	±95 units
<b>TOTAL</b>	<b>±95 units</b>

**Parking:**

Required parking:

**Commercial:** 1 space/30m<sup>2</sup> = 15 spaces @ 450m<sup>2</sup>

**Residential:** max 1.25 spaces/unit = 119 spaces

**Visitor:** 0.2space/unit = 19 spaces (to be shared with commercial parking)

Provided:

**Commercial** = ± 15 spaces (on surface)

**Residential** = 119 spaces (Underground)

**Visitor** = 19 spaces (±5 spaces to be shared with commercial on the surface)

Total Parking: ±148 spaces

- Surface Parking = ±15 spaces
- Underground Parking = ±133 spaces

**Site Area:** 0.45 ha  
**Density:** ±211 UPH

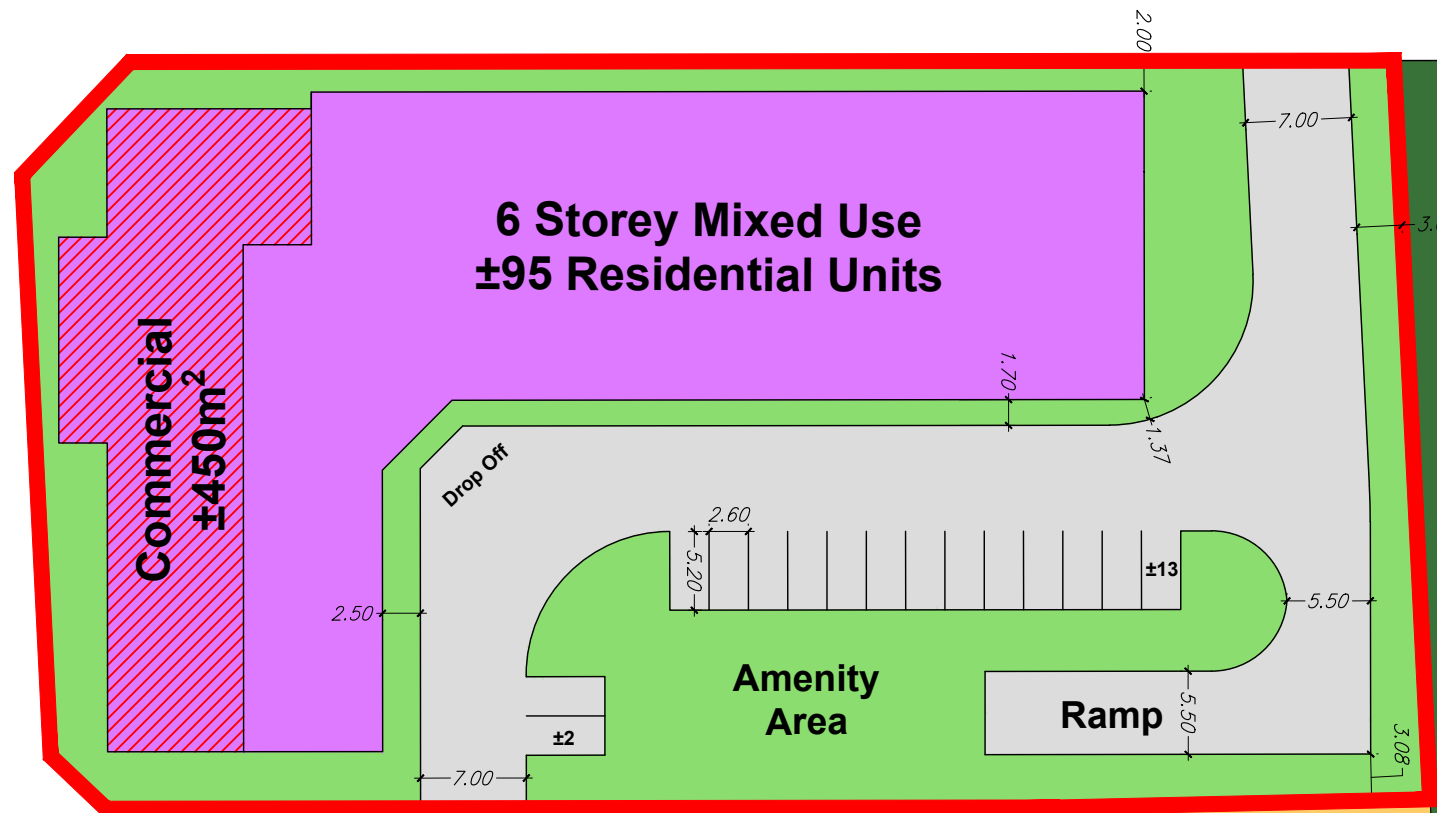
**STREET "A"**

**STREET "B"**

**ST. "G"**

**STREET "G"**

**LANE "D"**



Scale 1:500

October 26, 2020



206-277 Lakeshore Road East  
Oakville, Ontario L6J 1H9  
T: 905-257-0227  
info@korsiak.com