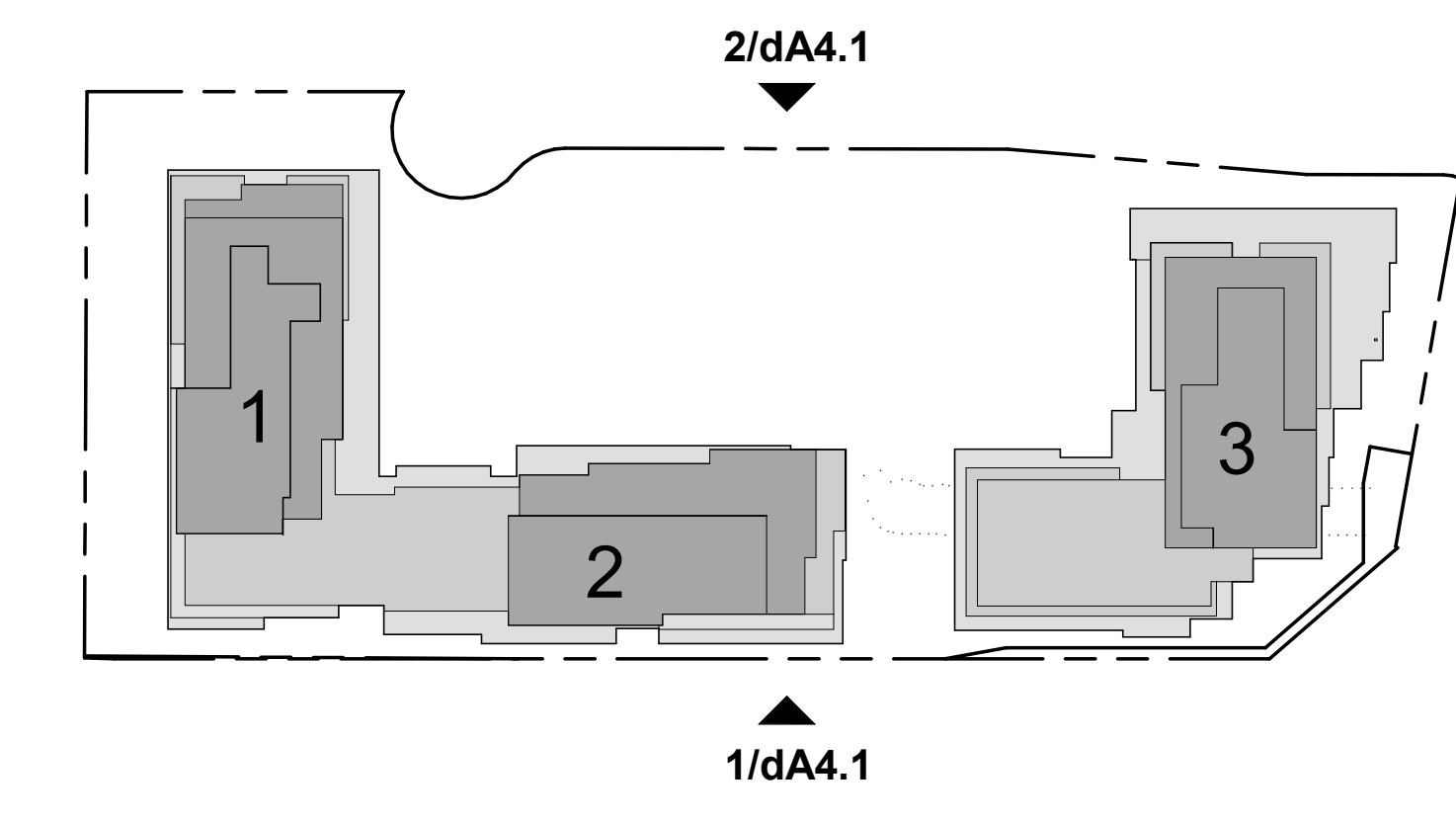


- EXTERIOR FINISH LEGEND:**
- E1 EIFS (TOWER & PODIUM) - WHITE SMOOTH FINISH
  - E2 EIFS (TOWER & PODIUM) - BEIGE SMOOTH FINISH
  - E3 EIFS (TOWER & PODIUM) - GRAY SMOOTH FINISH
  - E4 EIFS (TOWER & PODIUM) - DARK BLUE SMOOTH FINISH
  - M1 MASONRY (AT GRADE FOR SUITES) - WARM BRICK
  - M2 MASONRY (AT GRADE FOR SUITES) - IRONSPOT BRICK
  - A1 PREFINISHED ALUMINUM PANEL - BRASS FINISH
  - A2 PREFINISHED ALUMINUM PANEL - BLACKBERRY FINISH
  - G1 VISION GLASS ON PREFINISHED ALUMINUM WINDOW WALL
  - G2 VISION GLASS WITH FRIT PATTERN ON PREFINISHED ALUMINUM WINDOW WALL (BIRD FRIENDLY GLAZING TREATMENT)
  - R1 RAILING - CLEAR GLASS
  - R2 RAILING - FRITTED GLASS (BIRD FRIENDLY GLAZING TREATMENT)

**TYPICAL FRIT PATTERN:**

WHITE FRITTED PATTERN SHOULD BE A MINIMUM OF 5mm IN DIAMETER WITH A MAXIMUM SPACE OF 50x100mm



Exterior Finish Legend 4 dA4.1

Key Plan 3 dA4.1

All Drawings, Specifications, and Related Documents are the Copyright of the Architect. The Architect retains all rights in copyright of all uses of these documents for the intended jurisdiction as identified below. Reproduction of these documents, without permission from the Architect, is strictly prohibited. The Authorities Having Jurisdiction are permitted to use, distribute, and reproduce these drawings for the intended purpose as noted and dated below, however the intended permission to the Authorities Having Jurisdiction in no way releases or limits the Copyright of the Architect, or control of use of these documents to the Architect.

Do not scale the drawings.

The Drawing is Not To Be Used For Construction Until Signed By The Architect.

Date:



**KIRKOR ARCHITECTS AND PLANNERS**  
 20 De Boers Dr. # 400 Toronto ON M3J 0H1  
 Tel: 416 665 6060 kirkorarchitects.com

No.	Revision	Date



North Elevation 2 dA4.1



South Elevation 1 dA4.1

No.	Issued For:	Date:
03	SPA Re-submission #3	July 08, 2022
02	SPA Re-submission #2	Dec 17, 2021
01	SPA Submission #1	March 29, 2021

Drawing Title:

South & North Elevations  
 Daniels Emshoh Oakville Corporation

Client:  
**Daniels Emshoh Oakville Corporation**

Project:  
**Oakville Yards**

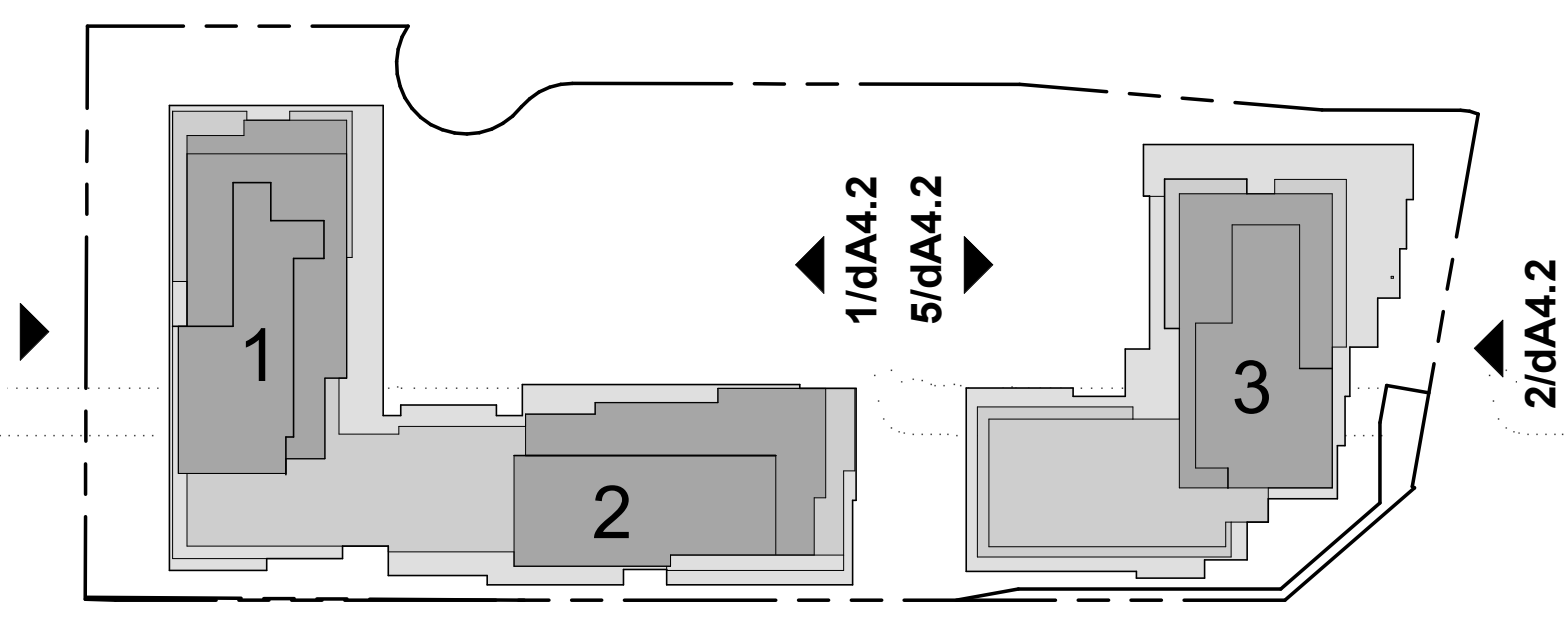
377 Dundas St E (Block 1), 387 Dundas St E (Block 2), 411 Dundas St E (Block 3)  
 Oakville, Ontario  
 Proposed Residential Development

Scale:  
 As indicated  
 Drawn by:  
 LG/MB  
 Checked by:  
 BW  
 Project No.:  
 20-058  
 Date:  
 July 08, 2022  
 Drawing No.:  
 dA4.1

EXTERIOR FINISH LEGEND:

- E1 EIFS (TOWER & PODIUM) - WHITE SMOOTH FINISH
- E2 EIFS (TOWER & PODIUM) - BEIGE SMOOTH FINISH
- E3 EIFS (TOWER & PODIUM) - GRAY SMOOTH FINISH
- E4 EIFS (TOWER & PODIUM) - DARK BLUE SMOOTH FINISH
- M1 MASONRY (AT GRADE FOR SUITES) - WARM BRICK
- M2 MASONRY (AT GRADE FOR SUITES) - IRONSPOT BRICK
- A1 PREFINISHED ALUMINUM PANEL - BRASS FINISH
- A2 PREFINISHED ALUMINUM PANEL - BLACKBERRY FINISH
- G1 VISION GLASS ON PREFINISHED ALUMINUM WINDOW WALL
- G2 VISION GLASS WITH FRIT PATTERN ON PREFINISHED ALUMINUM WINDOW WALL (BIRD FRIENDLY GLAZING TREATMENT)
- R1 RAILING - CLEAR GLASS
- R2 RAILING - FRITTED GLASS (BIRD FRIENDLY GLAZING TREATMENT)

**TYPICAL FRIT PATTERN:**  
 WHITE FRITTED PATTERN SHALL BE A MINIMUM OF 5mm IN DIAMETER WITH A MAXIMUM SPACE OF 50x100mm



Exterior Finish Legend 4 dA4.2

Key Plan 3 dA4.2  
1 : 1000

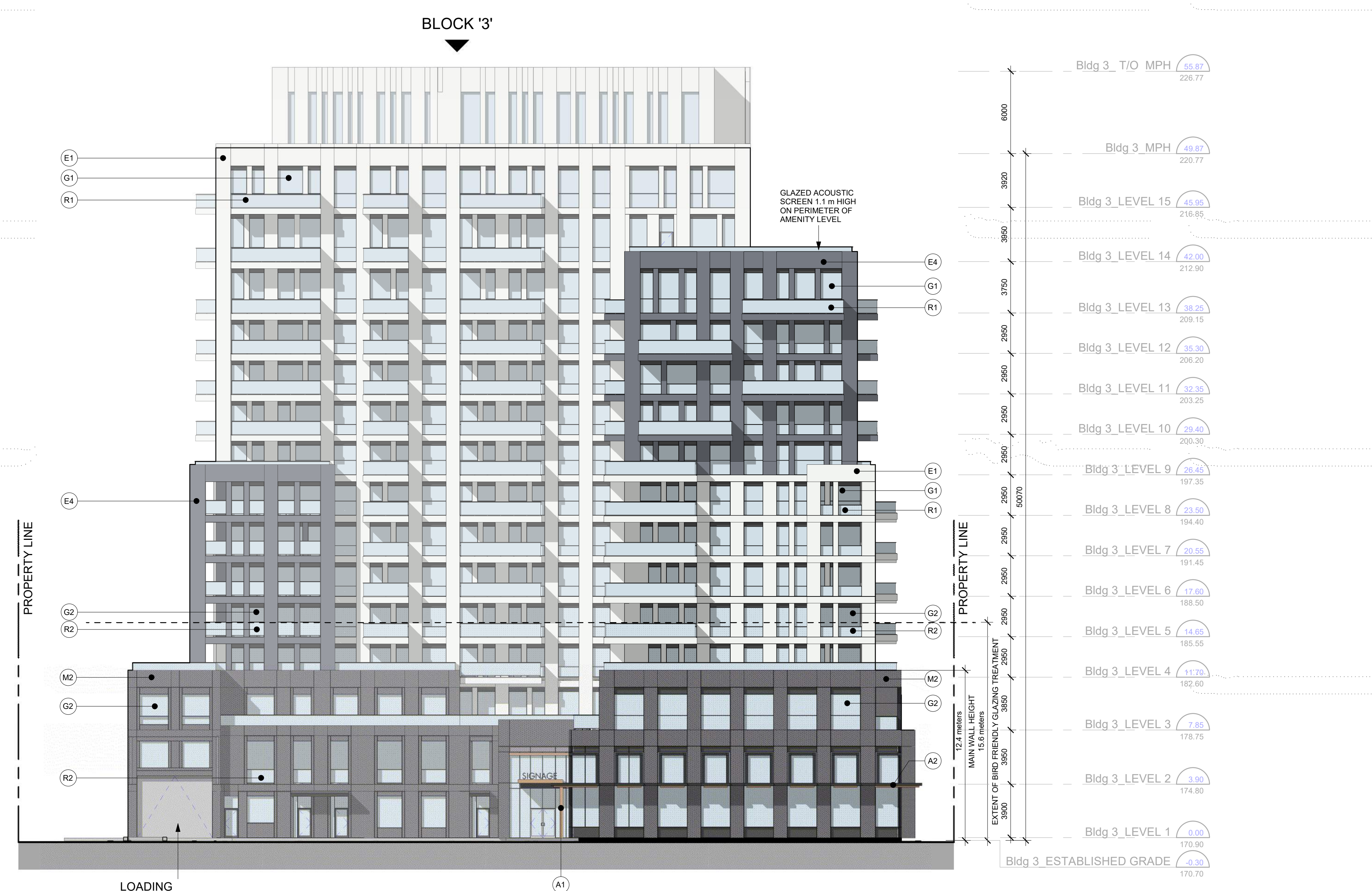
All Drawings, Specifications, and Related Documents are the Copyright of the Architect. The Architect retains all rights in control of all uses of these documents for the intended jurisdiction as identified below. Reproduction of these documents, without permission from the Architect, is strictly prohibited. The Authorities Having Jurisdiction are permitted to use, distribute, and reproduce these drawings for the intended purpose as noted and dated below, however the intended permission to the Authorities Having Jurisdiction in no way releases or binds the Copyright of the Architect, or control of use of these documents to the Architect.

This Drawing is Not To Be Used For Construction Until Signed By The Architect.  
 Date: \_\_\_\_\_

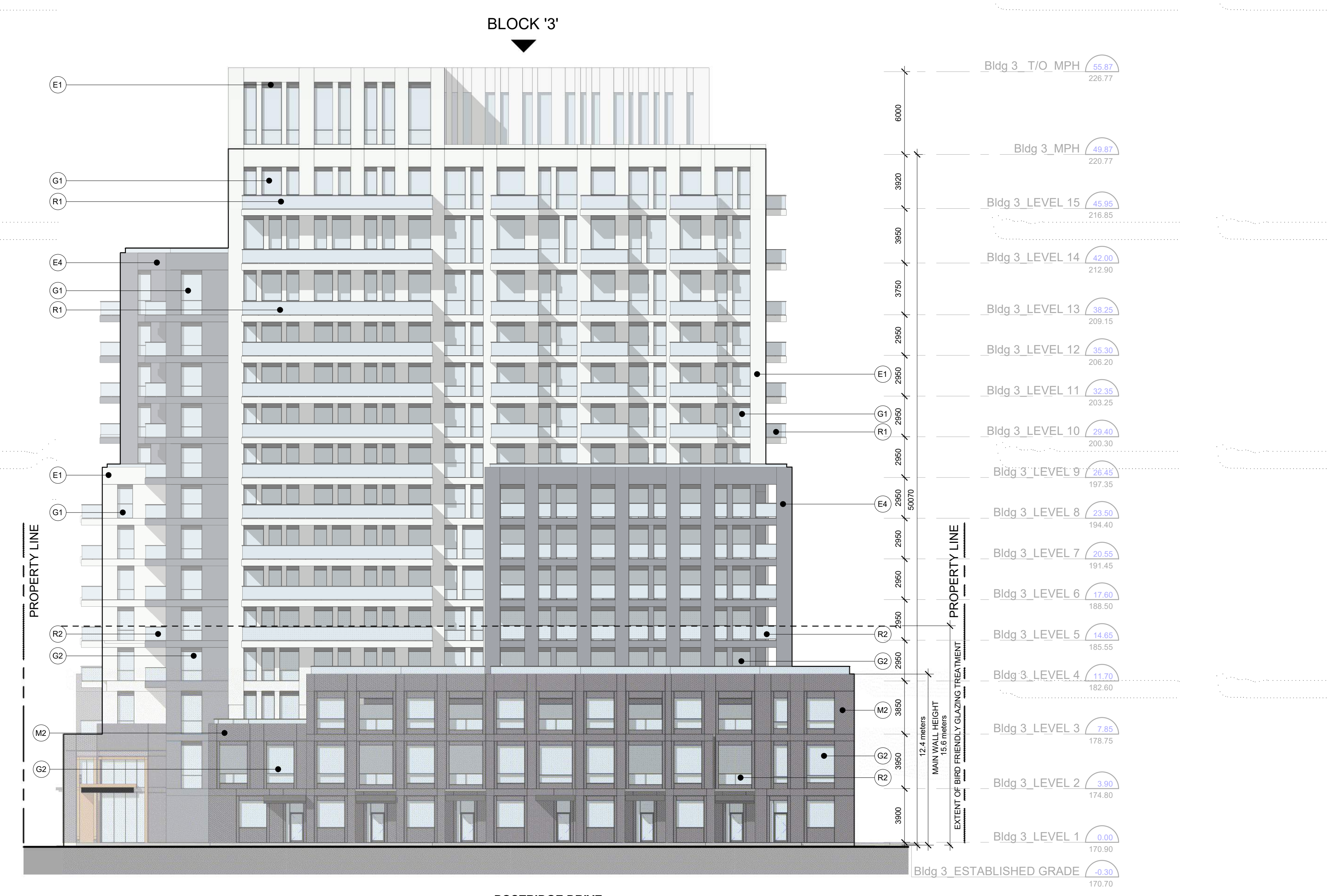


**KIRKOR ARCHITECTS AND PLANNERS**  
 20 De Boers Dr. # 400 Toronto ON M3J 0H1  
 Tel: 416 665 6060 kirkorarchitects.com

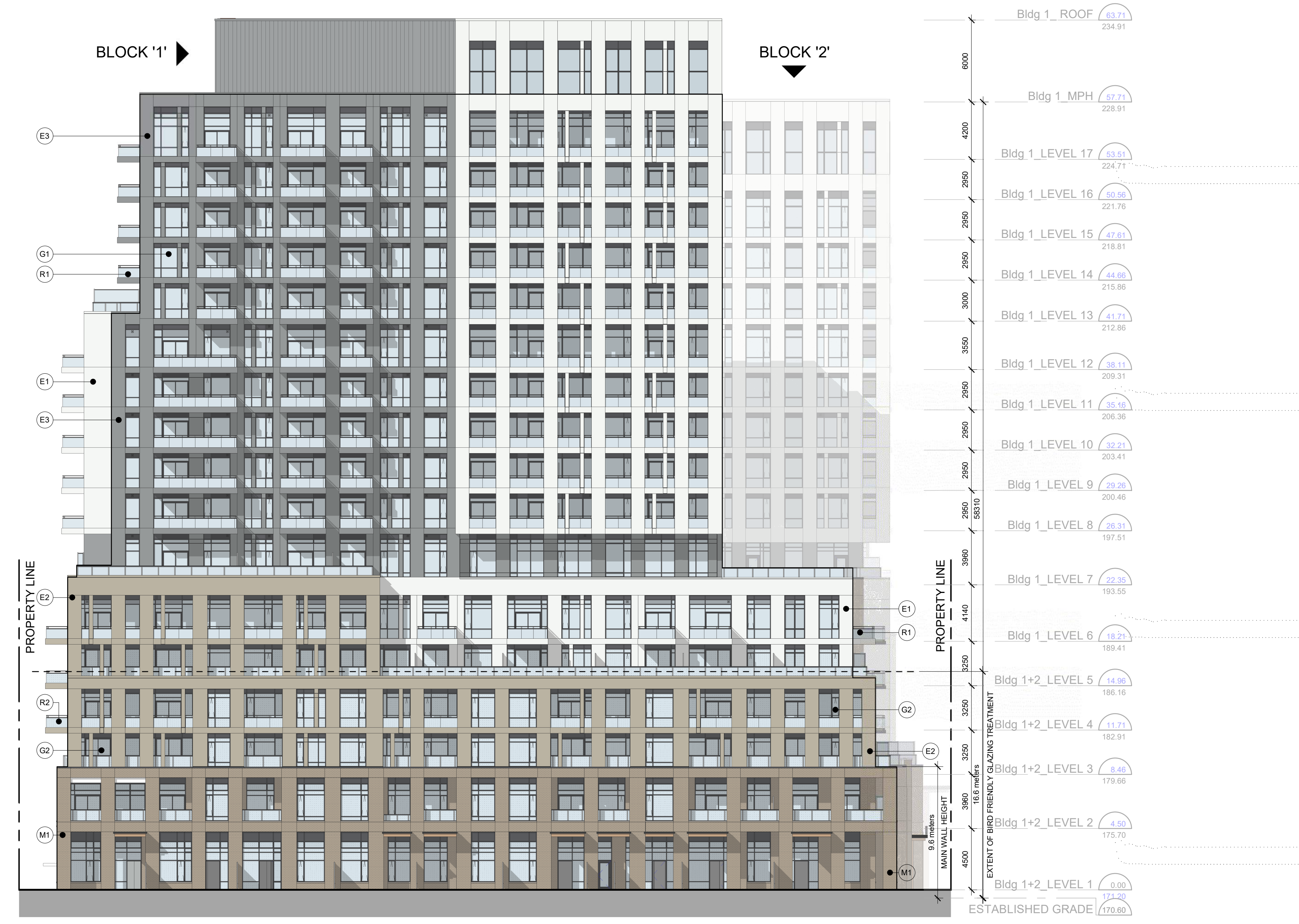
Revisions:  
 No. | Revision | Date



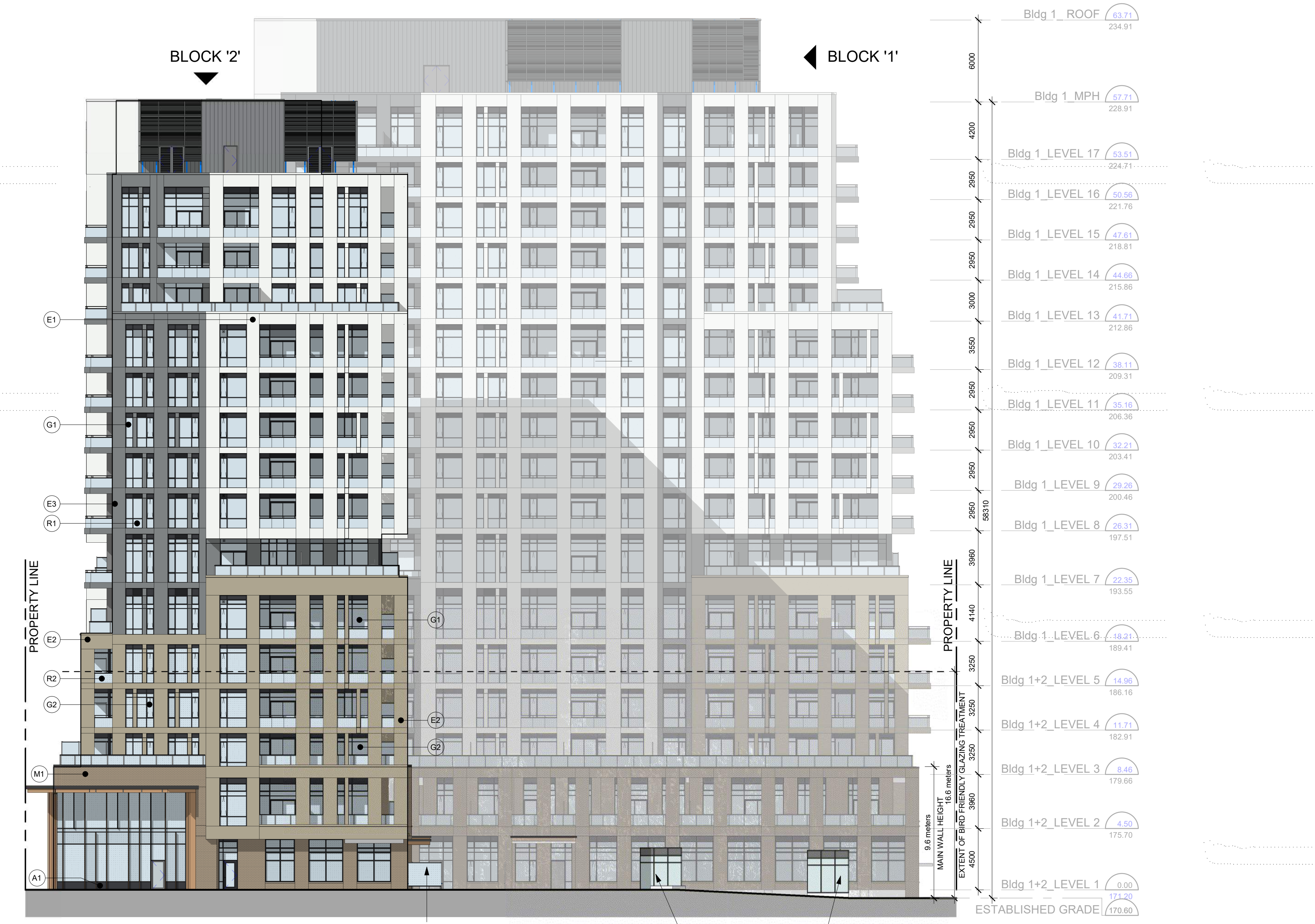
West Elevation - Block 3 5 dA4.2  
1 : 200



East Elevation - Block 3 2 dA4.2  
1 : 200



West Elevation - Blocks 1 & 2 6 dA4.2  
1 : 200



East Elevation - Blocks 1 & 2 1 dA4.2  
1 : 200

03	SPA Re-submission #3	July 08, 2022
02	SPA Re-submission #2	Dec 17, 2021
01	SPA Submission #1	March 29, 2021

West & East Elevations

Client:  
**Daniels Emshih Oakville Corporation**

Oakville Yards

377 Dundas St E (Block 1), 387 Dundas St E (Block 2), 411 Dundas St E (Block 3)  
 Oakville, Ontario  
 Proposed Residential Development

Scale: \_\_\_\_\_

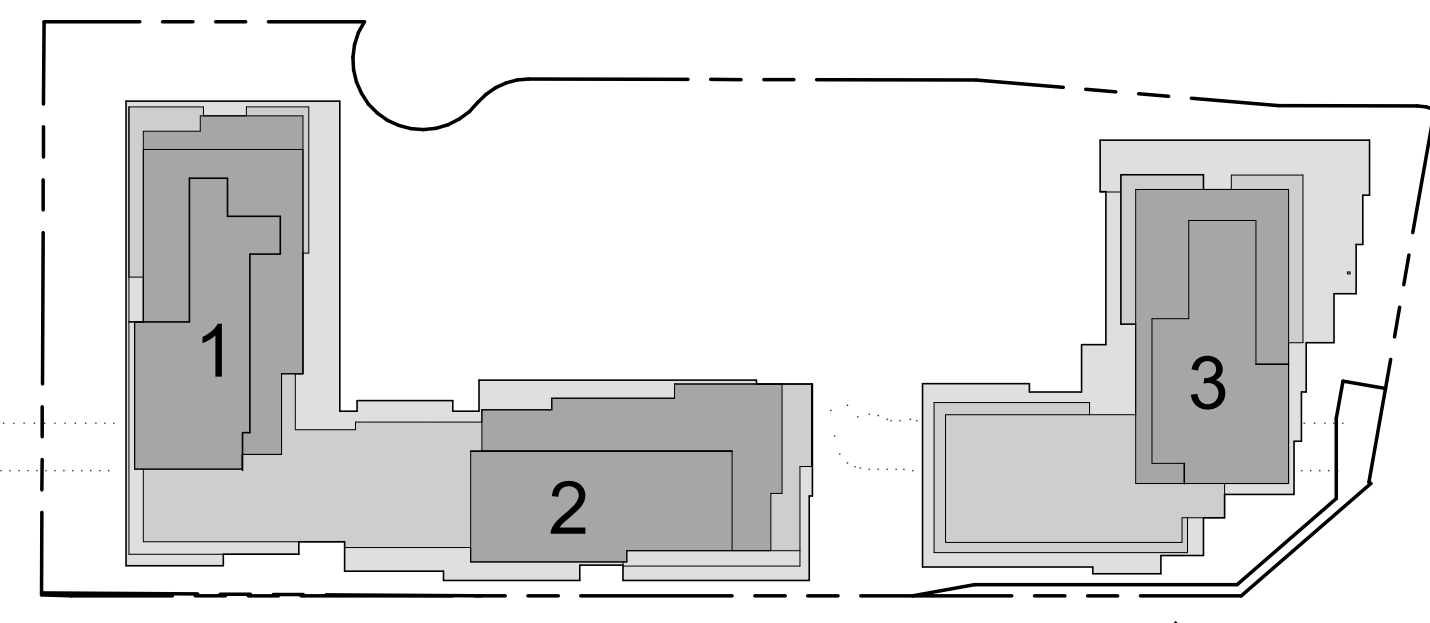
As indicated	Drawn by:
LG/MB	Checked by:
BW	Project No.:
20-058	Date:
July 08, 2022	Drawing No.:

**dA4.2**

- EXTERIOR FINISH LEGEND:**
- E1 EIFS (TOWER & PODIUM) - WHITE SMOOTH FINISH
  - E2 EIFS (TOWER & PODIUM) - BEIGE SMOOTH FINISH
  - E3 EIFS (TOWER & PODIUM) - GRAY SMOOTH FINISH
  - E4 EIFS (TOWER & PODIUM) - DARK BLUE SMOOTH FINISH
  - M1 MASONRY (AT GRADE FOR SUITES) - WARM BRICK
  - M2 MASONRY (AT GRADE FOR SUITES) - IRONSPOT BRICK
  - A1 PREFINISHED ALUMINUM PANEL - BRASS FINISH
  - A2 PREFINISHED ALUMINUM PANEL - BLACKBERRY FINISH
  - G1 VISION GLASS ON PREFINISHED ALUMINUM WINDOW WALL (BIRD FRIENDLY GLAZING TREATMENT)
  - G2 VISION GLASS WITH FRIT PATTERN ON PREFINISHED ALUMINUM WINDOW WALL (BIRD FRIENDLY GLAZING TREATMENT)
  - R1 RAILING - CLEAR GLASS
  - R2 RAILING - FRITTED GLASS (BIRD FRIENDLY GLAZING TREATMENT)

**TYPICAL FRIT PATTERN:**

WHITE FRITTED PATTERN SHOULD BE A MINIMUM OF 5mm IN DIAMETER WITH A MAXIMUM SPACE OF 50x100mm.



Exterior Finish Legend 2  
dA4.3

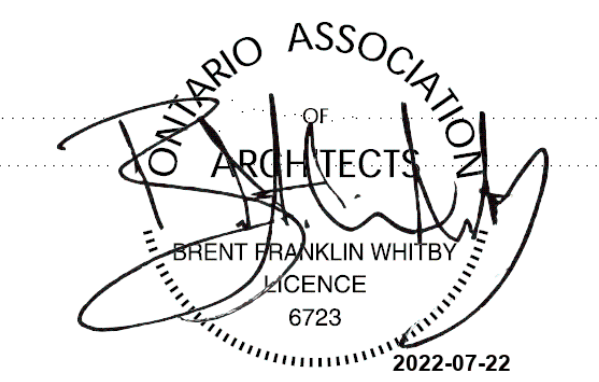
Key Plan 1  
1 : 1000 dA4.3

All Drawings, Specifications, and Related Documents are the Copyright of the Architect. The Architect retains all rights in control of all uses of these documents for the intended jurisdiction as identified below. Reproduction of these documents, without permission from the Architect, is strictly prohibited. The Authorities Having Jurisdiction are permitted to use, distribute, and reproduce these drawings for the intended purpose as noted and dated below, however the intended permission to the Authorities Having Jurisdiction in no way releases or limits the Copyright of the Architect, or control of use of these documents to the Architect.

Do not scale the drawings.

This Drawing is Not To Be Used For Construction Until Signed By The Architect.

Date:



**KIRKOR ARCHITECTS AND PLANNERS**  
 20 De Boers Dr. # 400 Toronto ON M3J 0H1  
 TEL: 416 665 6060 kirkorarchitects.com

No.	Revision	Date



A2

A1

RESIDENTIAL ENTRANCE

EXIT

AIRSHAFT SCREEN  
(refer to landscape)

E1

R2

G2

M2

G2

12.4 meters  
MAIN WALL HEIGHT

2950.00  
3850.00  
3950.00  
3900.00

Bldg 3\_LEVEL 5 14.65  
188.95  
Bldg 3\_LEVEL 4 11.75  
182.90  
Bldg 3\_LEVEL 3 7.85  
178.75  
Bldg 3\_LEVEL 2 3.95  
174.60  
Bldg 3\_LEVEL 1 0.05  
170.55  
Bldg 3\_ESTABLISHED GRADE 0.00  
170.70

POSTRIDGE DRIVE

DUNDAS STREET

No.	Issued For:	Date:
01	SPA Re-submission #3	July 08, 2022

Partial South Elevation - Block 3

Client:  
Daniels Emshih Oakvillage Corporation

Project:  
Oakville Yards  
377 Dundas St E (Block 1), 387 Dundas St E (Block 2), 411 Dundas St E (Block 3)  
Oakville, Ontario  
Proposed Residential Development

Scale:  
As indicated  
Drawn by:  
LG/MB  
Checked by:  
BW  
Project No.:  
20-058  
Date:  
July 08, 2022  
Drawing No.:

Partial South Elevation - Block 3  
1 : 50 3  
dA4.3

dA4.3