

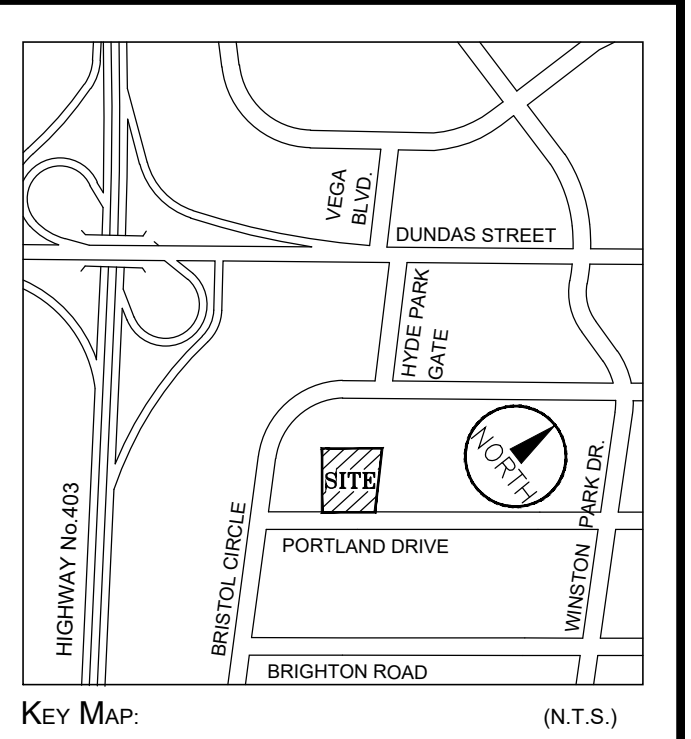
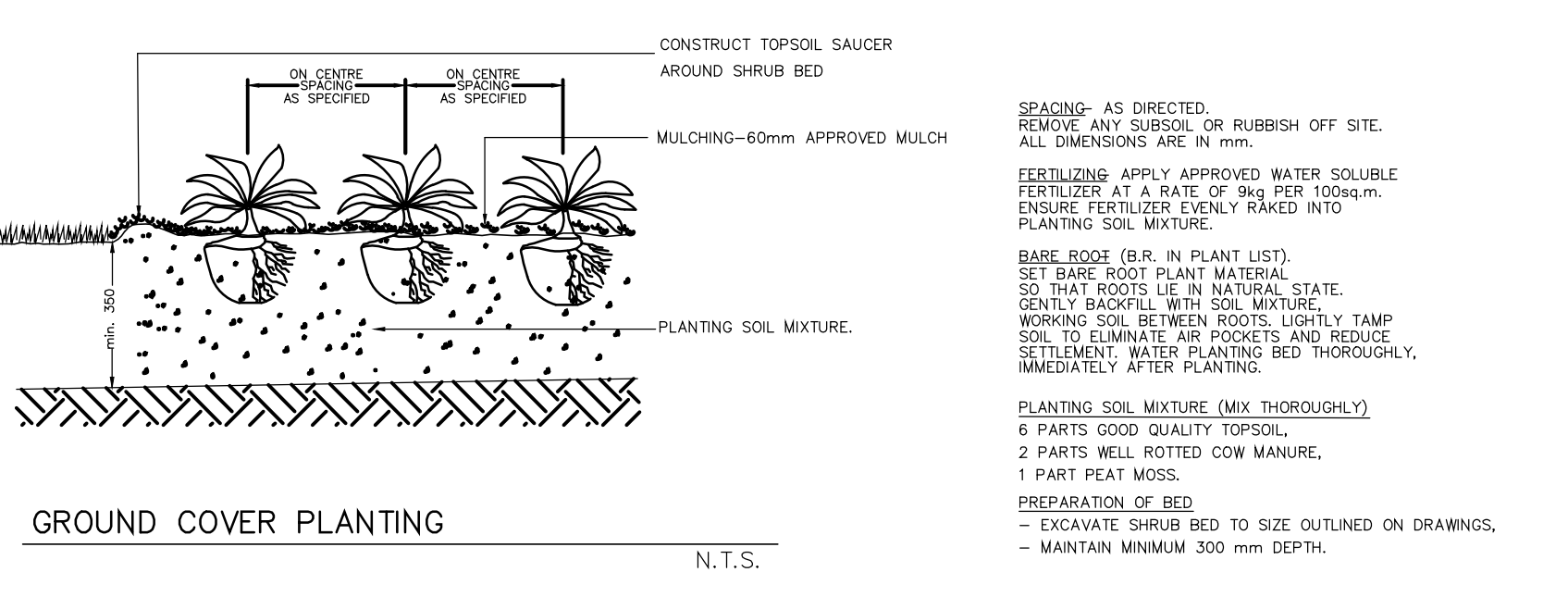
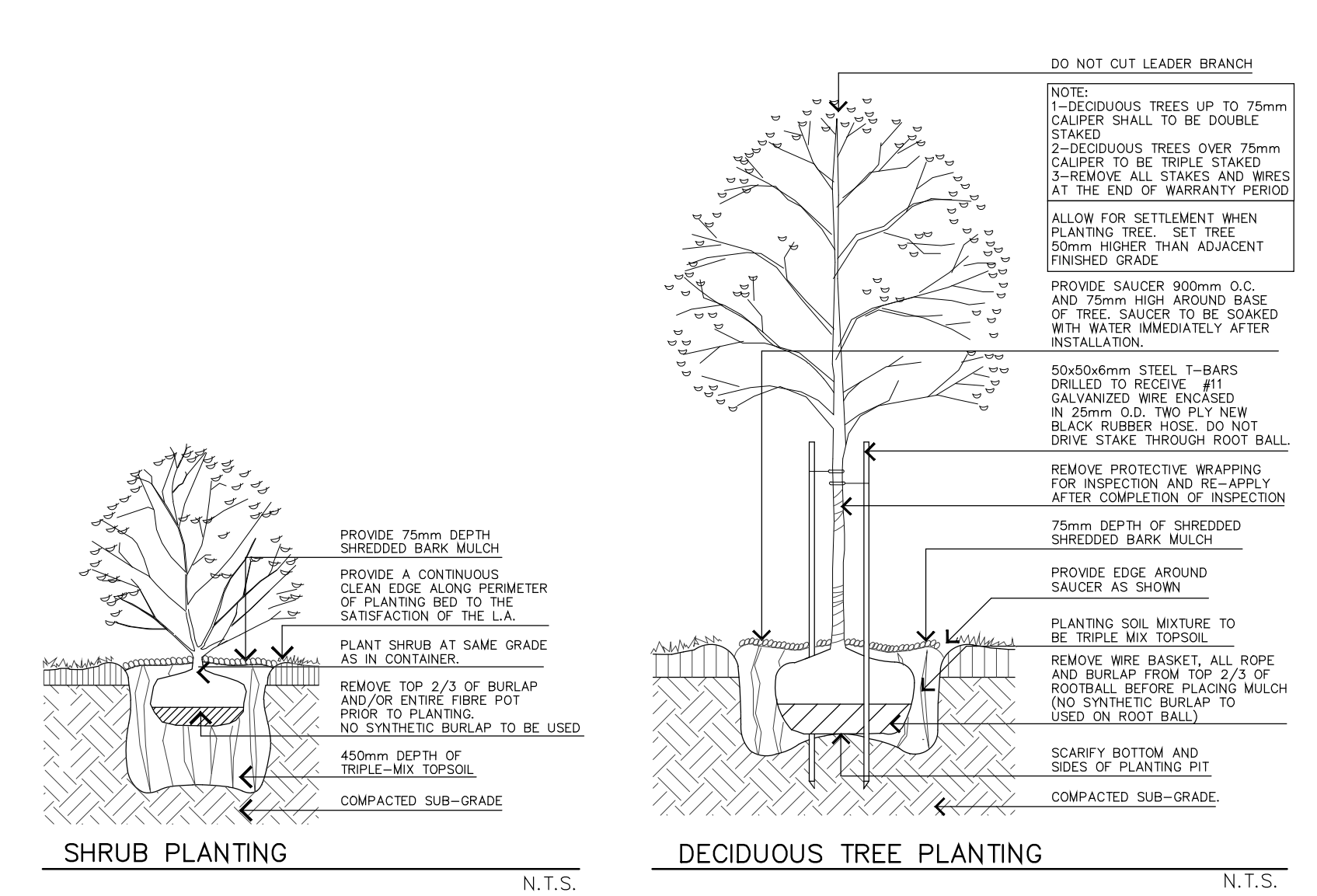
### PLANT LIST

Botanical Name	Common Name	Cal.	Ht.	Spr.	Cond.	Remarks	Total
<b>Deciduous Trees</b>							
<i>Acer freemanii</i> 'Autumn Blaze'	Freeman Maple	70mm			W.B.	Uniform Specimen	2
<i>Betula alleghaniensis</i>	Yellow Birch	70mm			W.B.	Uniform Specimen	2
<i>Ginkgo biloba</i>	Maidenhair Tree	70mm			W.B.	Uniform Specimen	4
<i>Liriodendron tulipifera</i>	Tulip Tree	70mm			W.B.	Uniform Specimen	2
<i>Ostrya virginiana</i>	Ironwood	70mm			W.B.	Uniform Specimen	1
<i>Quercus microcarpa</i>	Bur Oak	70mm			W.B.	Uniform Specimen	3
<b>Coniferous Shrubs</b>							
<i>Taxus media</i> 'Densiflora'	Dense Yew		60cm		G.G.	Uniform Specimen	8
<b>Deciduous Shrubs</b>							
<i>Cornus sericea</i>	Red Osier Dogwood		60cm		J. Cal.	Uniform Specimen	14
<i>Ribes aureum</i>	Golden Currant		60cm		G.G.	Uniform Specimen	14
<i>Euonymus fortunei</i> 'Sarcocoe'	Sarcocoe Euonymus		60cm		Potted	Uniform Specimen	15
<b>Perennials/Groundcover/Vine</b>							
<i>Parthenocissus quinquefolia</i>	Virginia Creeper				1 Cal.	Uniform Specimen	730
<i>Deschampsia cespitosa</i>	Tufted Hairgrass				1 Cal.	Uniform Specimen	90
<i>Echinacea purpurea</i>	Purple Coneflower				W.E.	Uniform Specimen	120
<i>Hemerocallis 'Joan Senior'</i>	Joan Senior Daylily				1 Cal.	Uniform Specimen	84
<i>Hosta 'June'</i>	June Hosta				1 Cal.	Uniform Specimen	63

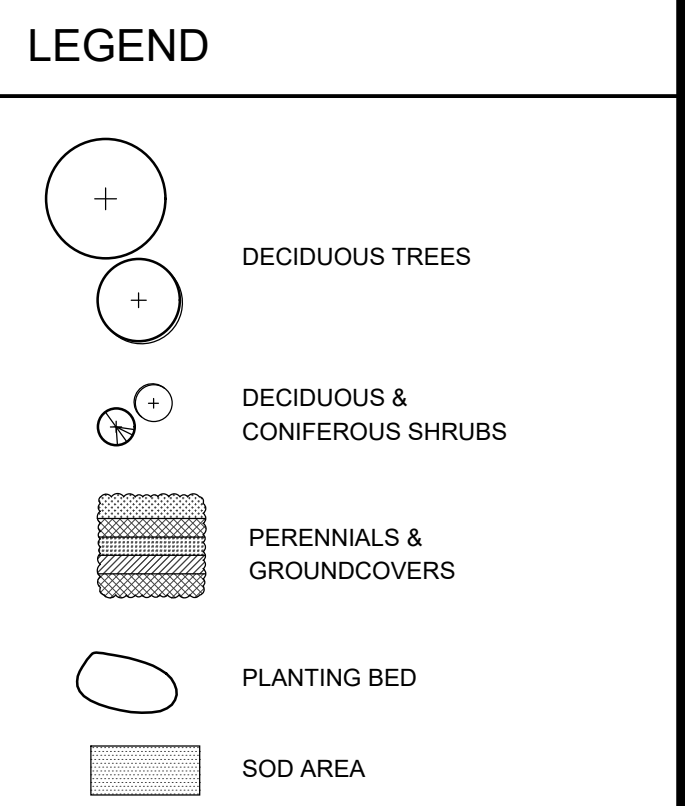
**NOTE:**

- IN CASE OF DISCREPANCY BETWEEN PLAN AND QUANTITIES ON PLANT LIST, CONTRACTOR TO SUPPLY AND INSTALL PLANT MATERIAL AS PER QUANTITIES LISTED ON LANDSCAPE PLAN.
- PLANT MATERIAL TO CONFORM TO CANADIAN NURSERY ASSOCIATION METRIC GUIDE SPECIFICATIONS FOR NURSERY STOCKS, LATEST EDITION.
- CONTRACTOR TO STAKE OUT ALL LOCATIONS FOR ALL UTILITIES PRIOR TO STAKING OUT TREE LOCATIONS.
- ALL SHRUB AND PERENNIAL PLANTINGS SHALL BE IN CONTINUOUS MULCHED BEDS, UNLESS OTHERWISE NOTED.
- ALL PLANT MATERIAL TO HAVE A 2-YEAR WARRANTY PERIOD.

S.B. = SHALLOW BALL  
 B.B. = BALLED & BURLAPPED  
 W.B. = WIRE BASKET  
 \* = NATIVE SPECIES  
 ♣ = WATER EFFICIENT SPECIES



BASE INFORMATION TAKEN FROM DRAWING(S) BY OTHERS. SALMONA DEVELOPMENT CORPORATION DOES NOT ASSUME ANY RESPONSIBILITY FOR ERRORS, OMISSIONS OR ACCURACY OF THE INFORMATION. DRAWINGS SHALL ONLY BE USED FOR GUIDELINE PURPOSES.

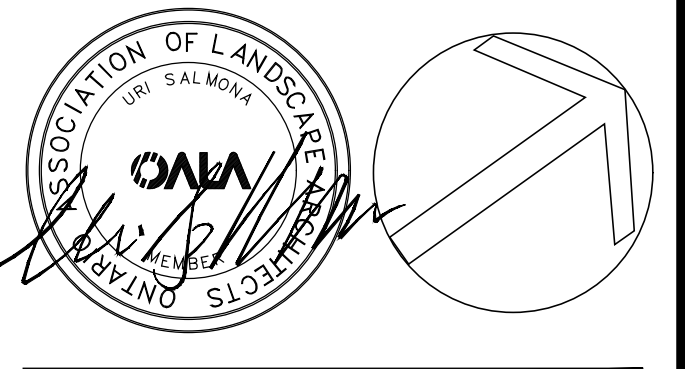


DATE	DESCRIPTION	CHECKED BY
DEC 12, 2021	ISSUED FOR 1ST SPA SUBMISSION	1. US

**REVISIONS:**

NOTE: Contractor is to check and verify all dimensions and conditions on the project, and is immediately report any discrepancies to the Architect and Engineer before proceeding with the work.

**SDC**  
 Salmona Development Consultants  
 2578 Bristol Circle, Suite 12, Oakville, Ontario L6H 6Z7 Tel: 416-809-8119



PROJECT:  
**PROPOSED INDUSTRIAL BUILDING**

2727 & 2737 PORTLAND DRIVE, OAKVILLE

DRAWING TITLE:  
**LANDSCAPE PLAN**

JOB NUMBER SDC 20210801	DRAWN BY DP
SCALE 1:250	CHECKED BY US
SHEET NUMBER	LP-1

MODIFIED: Dec 12, 2021  
 CREATED: Sep 04, 2021  
 PLOT STYLE TABLE: s4-Standard.ctb  
 FILE PATH: C:\Users\jcooper & sdc\Documents\Projects\2727 Portland Drive\2727 Portland Drive.dwg  
 PLOT: 11/12/2021 11:12:04 AM