

NOTE:  
FOR CROSS SECTIONS,  
REFER TO DWG. 8C

ALL REARYARD DRAINAGE TO  
BE CAPTURED IN REAR LOT  
CATCHBASINS. IN THE EVENT  
OF BLOCKAGES, EMERGENCY  
FLOWS SHALL BE DIRECTED  
TOWARDS THE NHS.

REFER TO  
DRAWING 7A

REFER TO  
DRAWING 7K



Legend		CUT-FILL DEPTH ALONG CENTERLINE	
	Coscorp (Rampen) Lands		0.00-1.00: Cut Depth (m)
	Subject Lands		1.00-2.00: Fill Depth (m)
	FSS Study Area		2.00-3.00: Cut Depth (m)
	Core 10 and 11 Boundary		>3.00: Fill Depth (m)
	Existing Elevation		0.00-1.00: Fill Depth (m)
	Proposed Elevation		1.00-2.00: Fill Depth (m)
	Existing Contour Elevation		2.00-3.00: Cut Depth (m)
	Overland Flow Direction		>3.00: Fill Depth (m)
	100 Yr Floodline		0.00-1.00: Cut Depth (m)
	Meander Belt Allowance		1.00-2.00: Fill Depth (m)
	Existing Regional Floodline		2.00-3.00: Cut Depth (m)
	15.0m Fisheries Setback		>3.00: Fill Depth (m)
	NHS Surveyed TOB		0.00-1.00: Cut Depth (m)
	Creek Centreline Limit		1.00-2.00: Fill Depth (m)
	NOCSS Connection Between Survey Points		2.00-3.00: Cut Depth (m)
	NHS Limit		>3.00: Fill Depth (m)
	30m Wetland Buffer		0.00-1.00: Cut Depth (m)
	Proposed Regional Storm Floodline		1.00-2.00: Fill Depth (m)

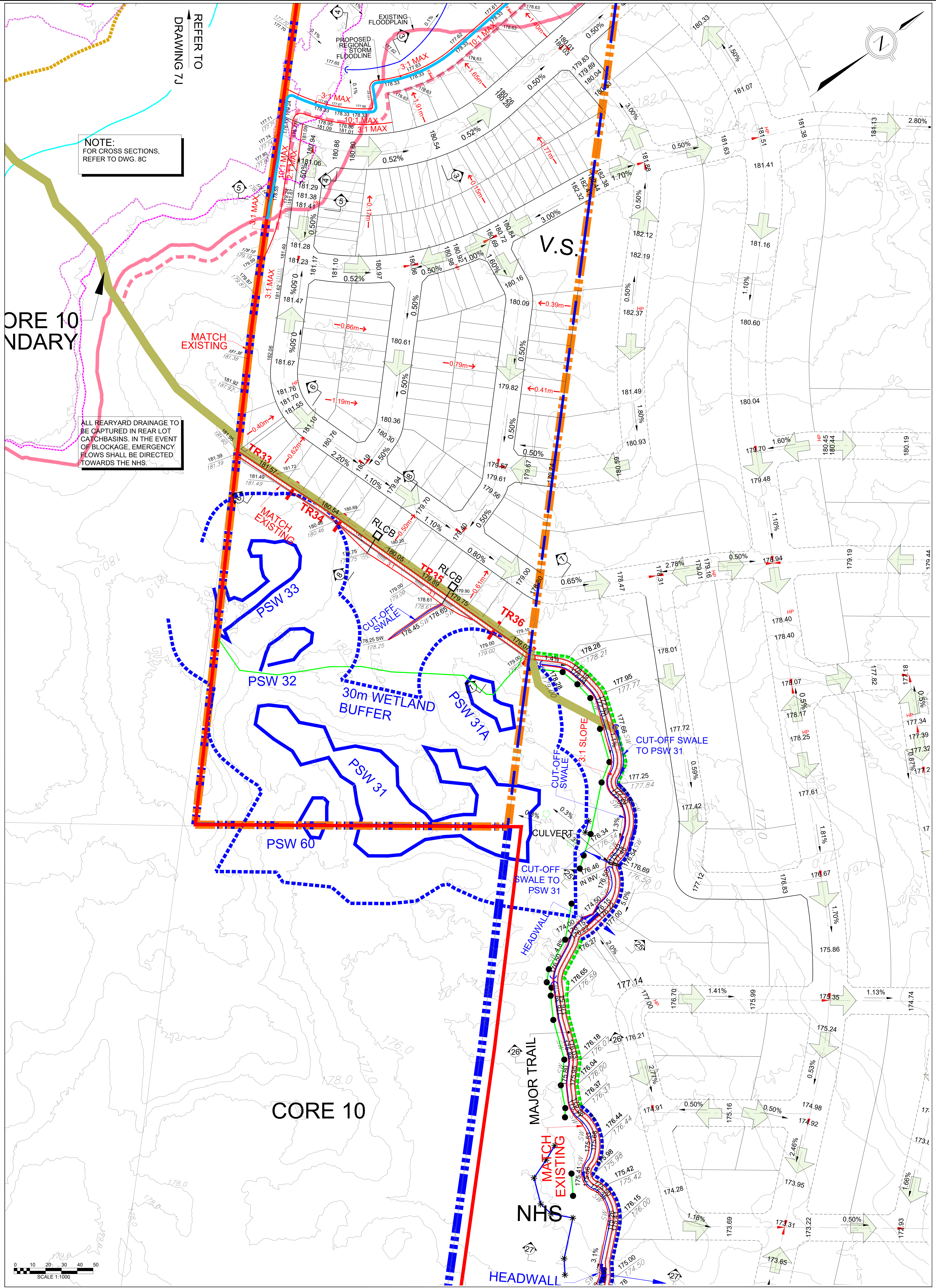
David Schaeffer Engineering Ltd.  
Jennifer Lawrence and Associates Inc.  
Savanta Inc.  
R. J. Burnside & Associates Ltd.  
GEO Morphix Ltd.  
Robert Russell Planning Consultants

COSCOP (RAMPEN) ADDENDUM TO THE  
JOSHUA'S CREEK TRIBUTARIES EIR/FSS

**DRAWING 7J**  
**CONCEPTUAL GRADING PLAN**

JULY 2022

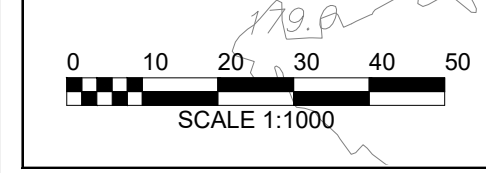




NOTE:  
FOR CROSS SECTIONS,  
REFER TO DWG. 8C

ALL REARYARD DRAINAGE TO  
BE CAPTURED IN REAR LOT  
CATCHBASINS. IN THE EVENT  
OF BLOCKAGE, EMERGENCY  
FLOWS SHALL BE DIRECTED  
TOWARDS THE NHS.

CORE 10  
BOUNDARY



Legend	
	Coscorp (Rampen) Lands
	Subject Lands
	FSS Study Area
	Core 10 and 11 Boundary
	Existing Elevation
	Proposed Elevation
	Existing Contour Elevation
	Overland Flow Direction
	100 Yr Floodline
	Meander Belt Allowance
	Existing Regional Floodline
	15.0m Fisheries Setback
	NHS Surveyed TOB
	Creek Centreline Limit
	NOCSS Connection Between Survey Points
	NHS Limit
	30m Wetland Buffer
	Proposed Regional Storm Floodline
	Drip Line
	10m Drip Line Offset
	PSW Limit

CUT-FILL DEPTH ALONG CENTERLINE	
Cut Depth (m)	Fill Depth (m)
0.00-1.00: Yellow	0.00-1.00: Light Blue
1.00-2.00: Orange	1.00-2.00: Medium Blue
2.00-3.00: Red	2.00-3.00: Dark Blue
>3.00: Dark Red	>3.00: Very Dark Blue

COSCROP (RAMPEN) ADDENDUM TO THE  
JOSHUA'S CREEK TRIBUTARIES EIR/FSS

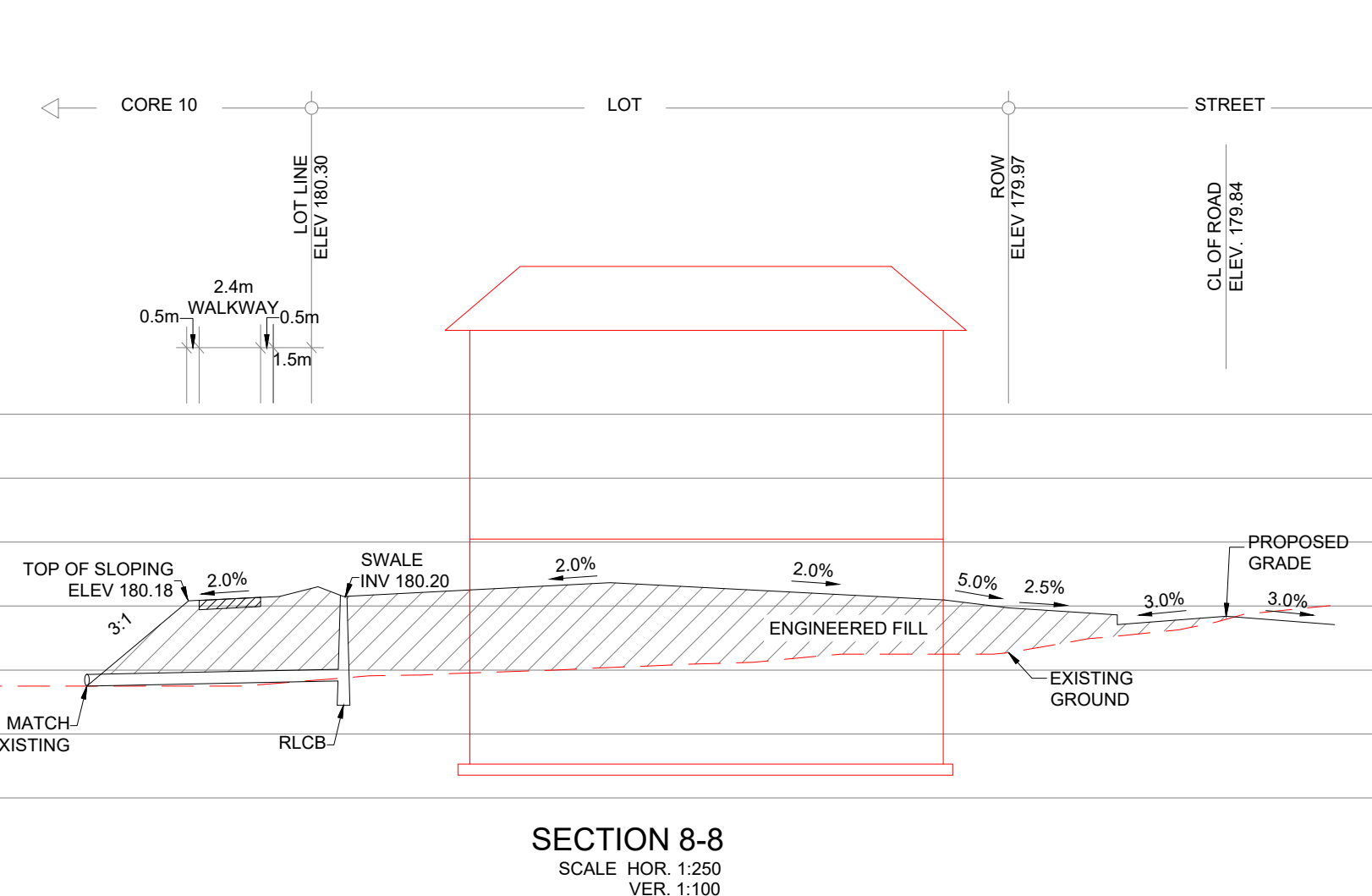
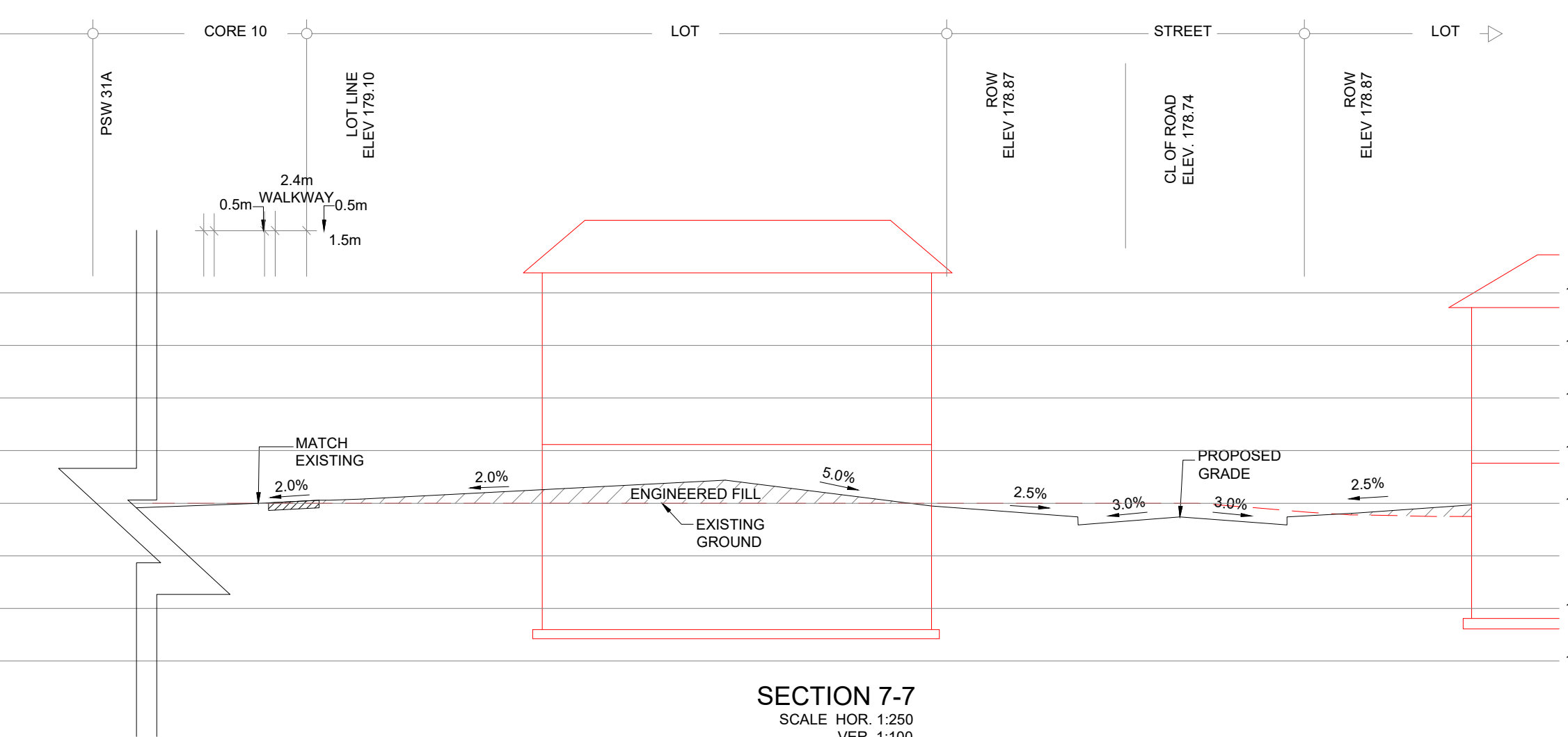
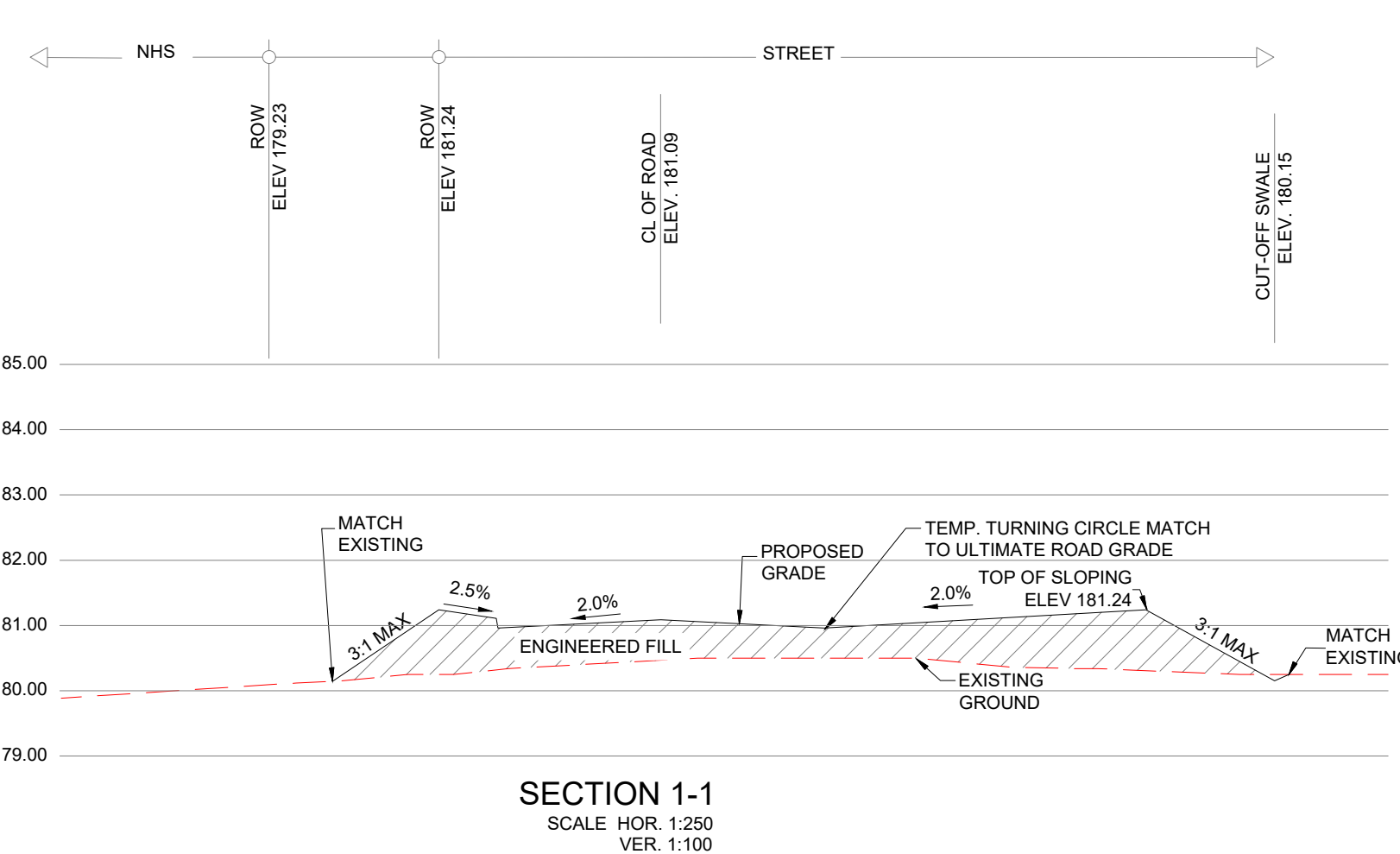
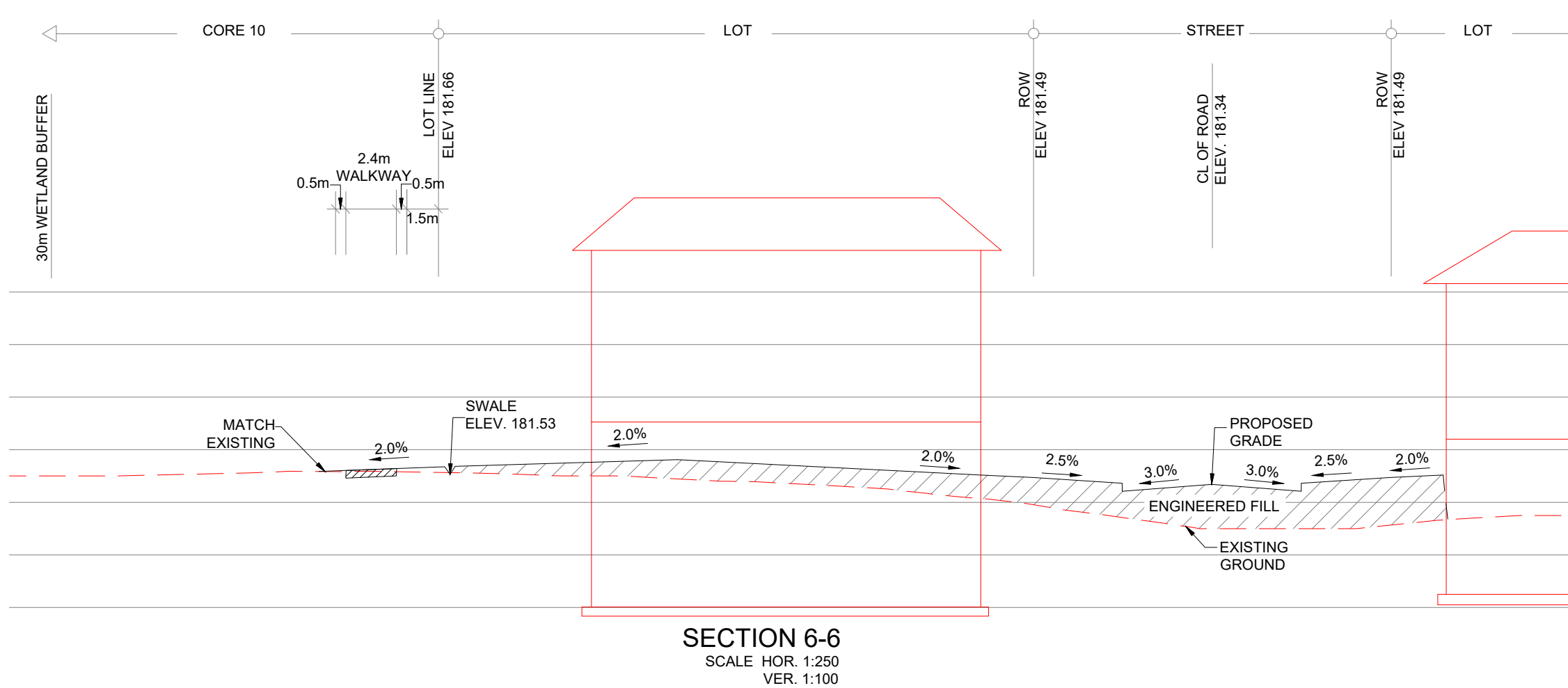
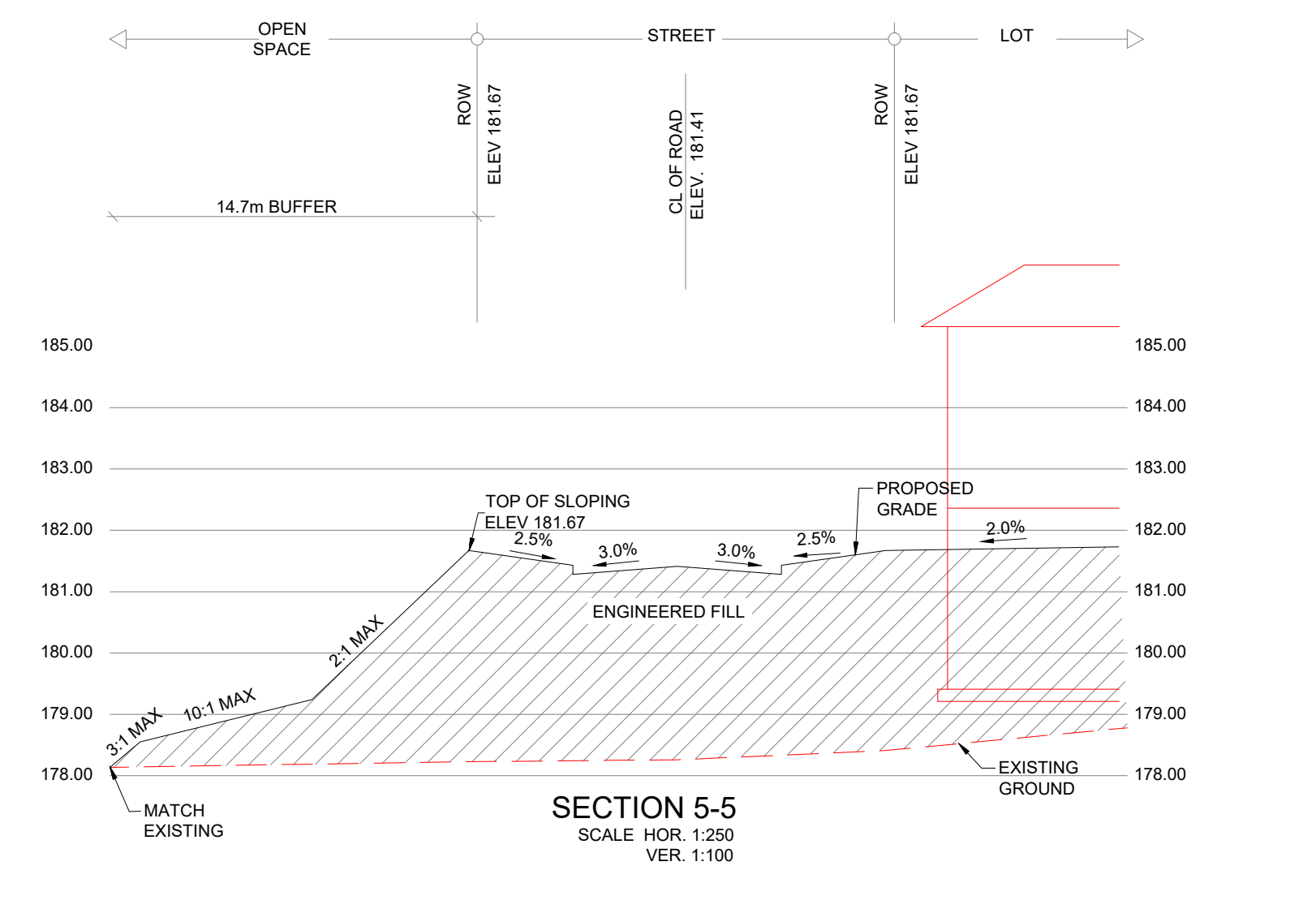
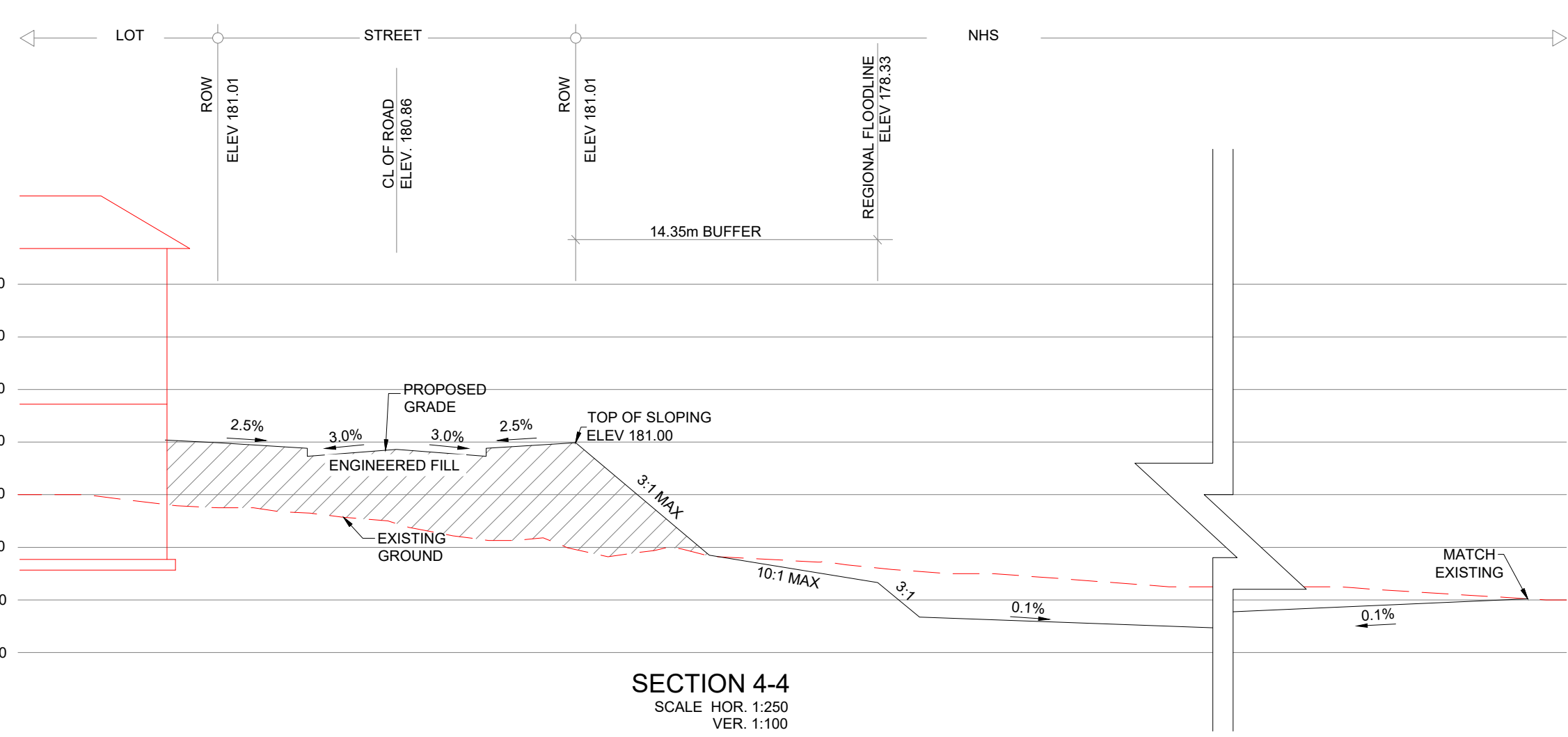
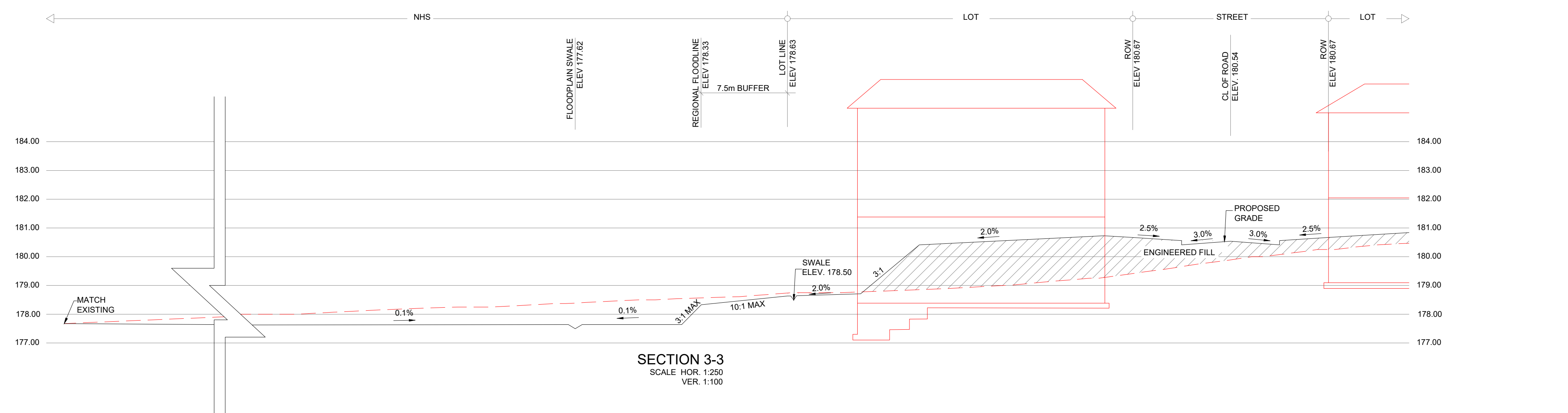
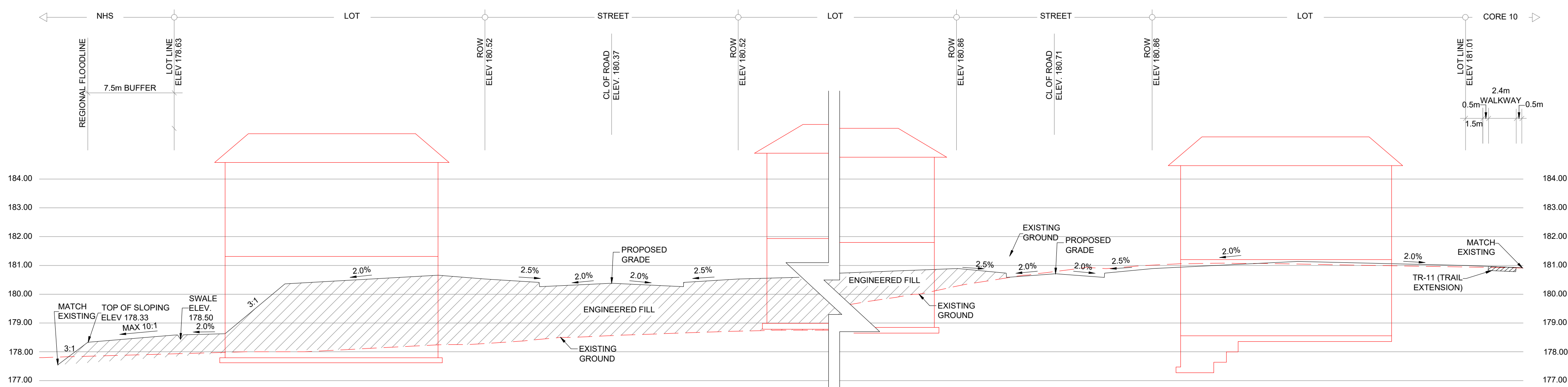
**DRAWING 7K**

**CONCEPTUAL GRADING PLAN**

JULY 2022

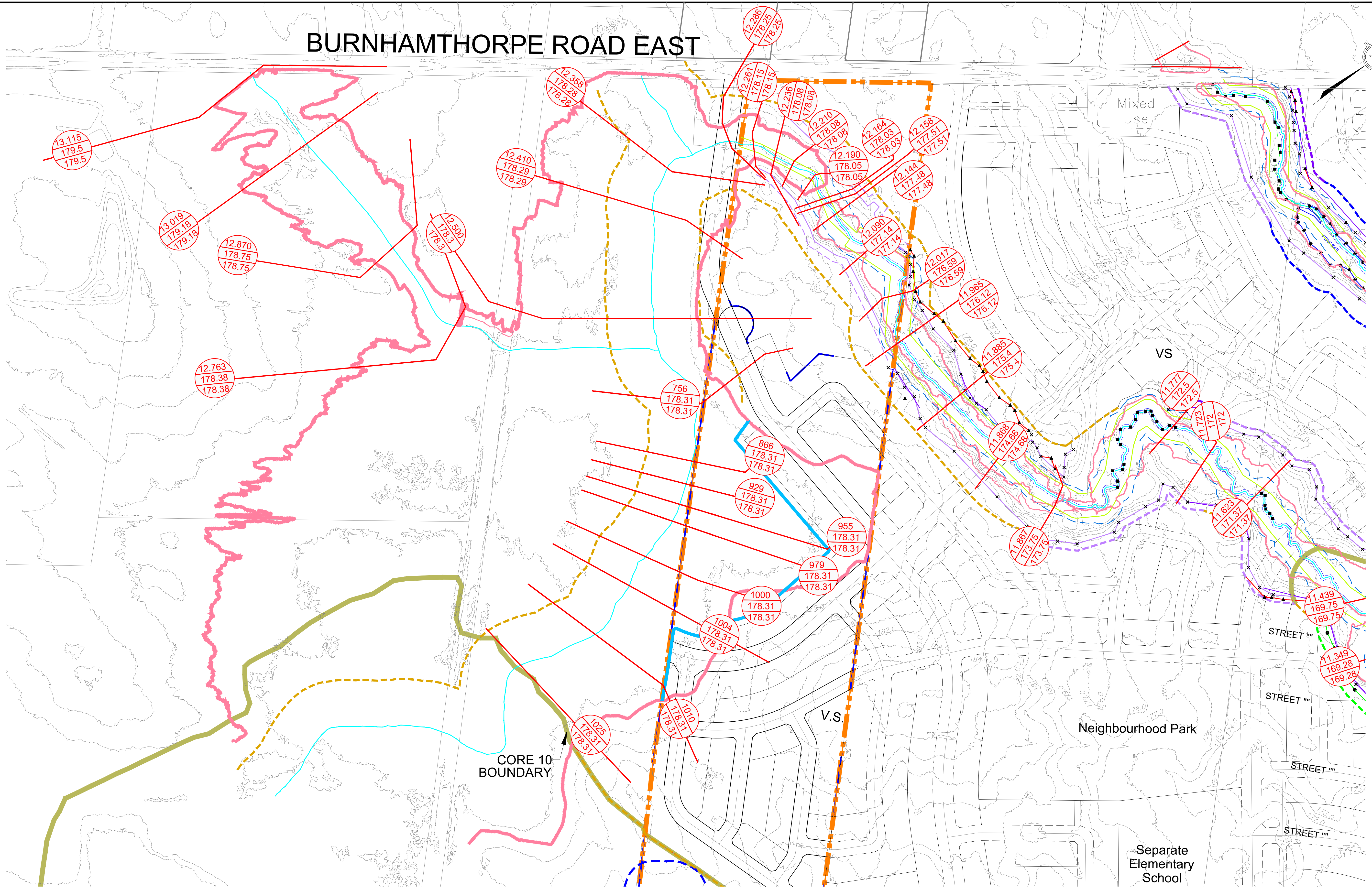
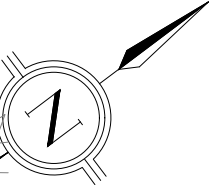
David Schaeffer Engineering Ltd.  
Jennifer Lawrence and Associates Inc.  
Savanta Inc.  
R. J. Burnside & Associates Ltd.  
GEO Morphix Ltd.  
Robert Russell Planning Consultants







# BURNHAMTHORPE ROAD EAST



**Legend**

- — — Coscorp (Rampen) Lands
- — — Subject Lands
- — — Existing Regional Floodplain
- — — Proposed Regional Storm Floodline
- NHS Limit
- Meander Belt Allowance
- 15.0m Fisheries Setback
- NHS Surveyed TOB
- Creek Centreline Limit
- NOCSS Connection Between Survey Points
- — — 30m Wetland Buffer

- 1687  
167.97  
168.25 HEC-RAS Cross Section ID
- Existing Regional Water Level
- Proposed Regional Water Level
- Existing Contour Elevation

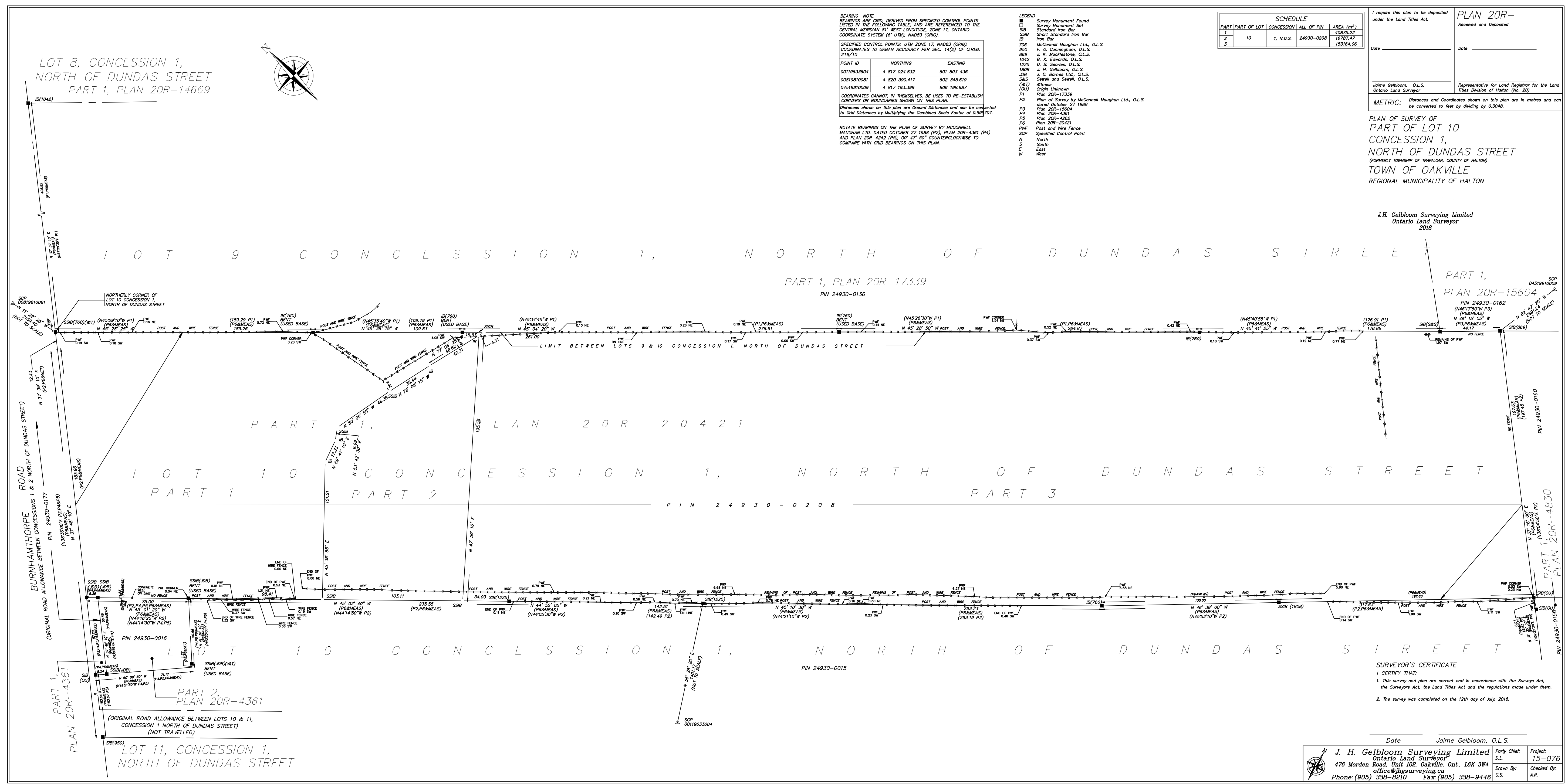
David Schaeffer Engineering Ltd.  
 Jennifer Lawrence and Associates Inc.  
 Savanta Inc.  
 R. J. Burnside & Associates Ltd.  
 GEO Morphix Ltd.  
 Robert Russell Planning Consultants

COSCOP (RAMPEN) ADDENDUM TO THE  
 JOSHUA'S CREEK TRIBUTARIES EIR/FSS

**DRAWING 10**  
**PRE AND POST DEVELOPMENT REGIONAL  
 FLOODPLAIN, JC-8**

JULY 2022





**BEARING NOTE:**  
 BEARINGS ARE DERIVED FROM SPECIFIED CONTROL POINTS LISTED IN THE FOLLOWING TABLE, AND ARE REFERENCED TO THE CENTRAL MERIDIAN OF WEST LONGITUDE, ZONE 17, ONTARIO COORDINATE SYSTEM (UTM), NAD83 (ORIG).

POINT ID	NORTHING	EASTING
0019833604	4 817 024.832	601 803 436
00819810081	4 820 390.417	602 345 619
04519910009	4 817 793.399	608 198 687

**SPECIFIED CONTROL POINTS: UTM ZONE 17, NAD83 (ORIG).**  
 COORDINATES TO URBAN ACCURACY PER SEC. 14(2) OF OREG. 216/70

**COORDINATES CANNOT, IN THEMSELVES, BE USED TO RE-ESTABLISH CORNERS OR BOUNDARIES SHOWN ON THIS PLAN.**

**DISTANCES SHOWN ON THIS PLAN ARE Ground Distances and can be converted to GSD Distances by Multiplying the Combined Scale Factor of 0.9999702.**

**ROTATE BEARINGS ON THE PLAN OF SURVEY BY MCCONNELL MAUGHAN LTD. DATED OCTOBER 27 1988 (P2), PLAN 20R-4361 (P4) AND PLAN 20R-4242 (P5), 50° 47' 50" COUNTERCLOCKWISE TO COMPARE WITH GSD BEARINGS ON THIS PLAN.**

**LEGEND**

- Survey Monument Found
- Survey Monument Set
- Stations from Survey
- Short Standard Iron Bar
- Pin Set
- McConnell Maughan Ltd., O.L.S.
- F. G. Cunningham, O.L.S.
- Stations from Survey
- J. K. MacKinnon, O.L.S.
- R. K. Edwards, O.L.S.
- D. B. Stearns, O.L.S.
- J. H. Gelbloom, O.L.S.
- J. D. Barnes Ltd., O.L.S.
- Sewell and Sewell, O.L.S.
- Witness
- Origin Unknown
- (OU)
- Plan 20R-17339
- P2
- Plan of Survey by McConnell Maughan Ltd., O.L.S. dated October 27 1988
- P3
- Plan 20R-15604
- Plan 20R-4361
- P4
- Plan 20R-4242
- Plan 20R-52421
- P5
- Post and Wire Fence
- SOP
- Specified Control Point
- N
- North
- S
- South
- E
- East
- W
- West

SCHEDULE			
PART	PART OF LOT	CONCESSION	AREA (m <sup>2</sup> )
1	10	1, N.D.S.	24930-0208
2			15764.08
3			

I require this plan to be deposited under the Land Titles Act.

**PLAN 20R-**  
 Received and Deposited

Date \_\_\_\_\_ Date \_\_\_\_\_

Jaime Gelbloom, O.L.S. Representative for Land Registrar for the Land Titles Division of Halton (No. 20)

**METRIC:** Distances and Coordinates shown on this plan are in metres and can be converted to feet by dividing by 0.3048.

**PLAN OF SURVEY OF PART OF LOT 10 CONCESSION 1, NORTH OF DUNDAS STREET (FORMERLY TOWNSHIP OF TRAFALGAR, COUNTY OF HALTON) TOWN OF OAKVILLE REGIONAL MUNICIPALITY OF HALTON**

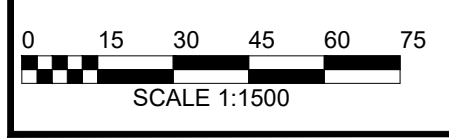
J.H. Gelbloom Surveying Limited  
 Ontario Land Surveyor  
 2018

**SURVEYOR'S CERTIFICATE**  
 I CERTIFY THAT:  
 1. This survey and plan are correct and in accordance with the Survey Act, the Surveyors Act, the Land Titles Act and the regulations made under them.  
 2. The survey was completed on the 12th day of July, 2018.

Date \_\_\_\_\_  
 Jaime Gelbloom, O.L.S.

**J. H. Gelbloom Surveying Limited**  
 Ontario Land Surveyor  
 476 Morden Road, Unit 102, Oakville, Ont., L6K 3W4  
 Phone: (905) 336-8210 Fax: (905) 336-9446

Party Chief: D.L.  
 Checked By: A.R.  
 Project: 15-076  
 Drawn By: G.S.



David Schaeffer Engineering Ltd.  
 Jennifer Lawrence and Associates Inc.  
 Savanta Inc.  
 R. J. Burnside & Associates Ltd.  
 GEO Morphix Ltd.  
 Robert Russell Planning Consultants

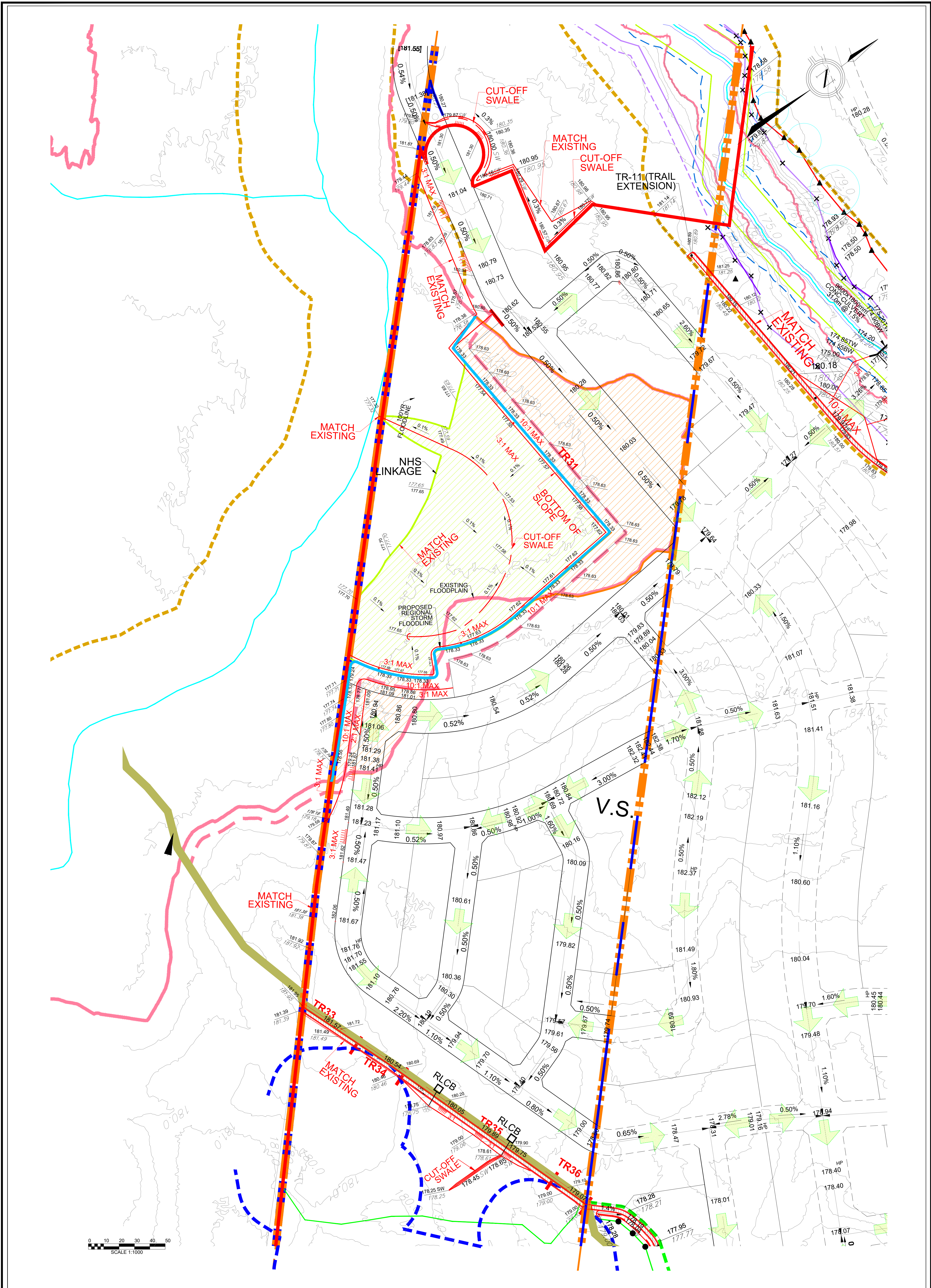
COSCORP (RAMPEN) ADDENDUM TO THE JOSHUA'S CREEK TRIBUTARIES EIR/FSS

**DRAWING 11**

**R-PLAN OF COSCORP (RAMPEN) LANDS**

JULY 2022





Legend			
	Coscorp (Rampen) Lands		Meander Belt Allowance
	Subject Lands		Regional Floodline
	FSS Study Area		Proposed Regional Floodline
	Core 10 and 11 Boundary		NHS Surveyed TOB
	Existing Elevation		Creek Centreline Limit
	Proposed Elevation		NOCSS Connection Between
	Existing Contour Elevation		Survey Points
	Overland Flow Direction		NHS Limit
	Thicket, Hedgerow & Cultural Meadow/Stream Veg		30m Wetland Buffer
			Dripline
			Proposed Floodplain Compensation Area
			Proposed Fill Within Regional Floodplain

David Schaeffer Engineering Ltd.  
 Jennifer Lawrence and Associates Inc.  
 Savanta Inc.  
 R. J. Burnside & Associates Ltd.  
 GEO Morphix Ltd.  
 Robert Russell Planning Consultants

COSCORP (RAMPEN) ADDENDUM TO THE JOSHUA'S CREEK TRIBUTARIES EIR/FSS

**DRAWING 12**

**FLOODPLAIN COMPENSATION JCB**

JULY 2022