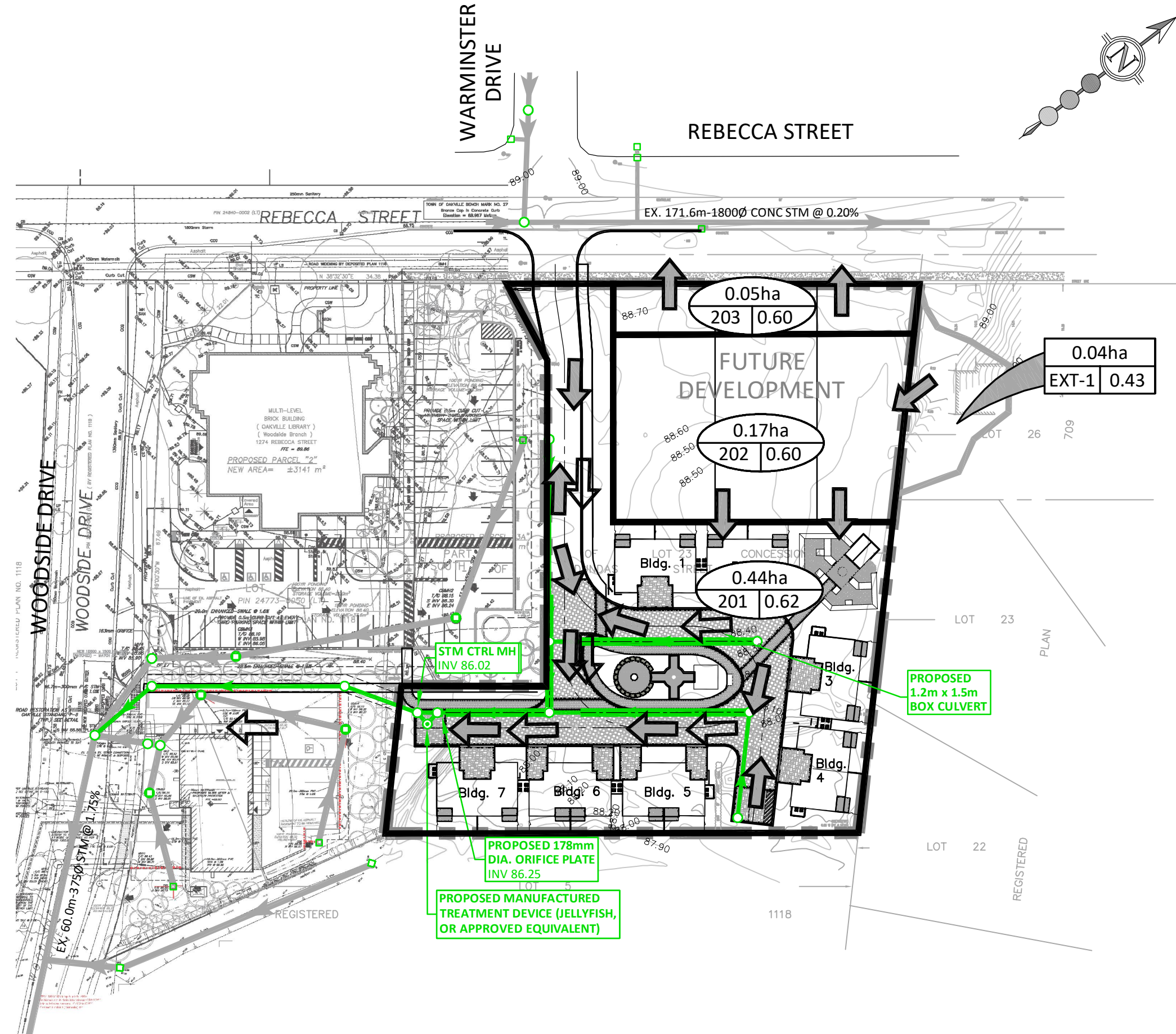


- LEGEND:**
- PROPERTY BOUNDARY
 - STORM DRAINAGE BOUNDARY
 - EXTERNAL STORM DRAINAGE BOUNDARY
 - DRAINAGE AREA (HECTARES)
RUNOFF COEFFICIENT
CATCHMENT ID
 - MAJOR SYSTEM FLOW
 - EXISTING CONTOUR
 - EXISTING STORM SEWER AND MANHOLE
 - EXTERNAL STORM DRAINAGE AREA (HECTARES)
RUNOFF COEFFICIENT
CATCHMENT ID
 - DRAINAGE AREA ACCOUNTED FOR WITHIN WOODSIDE DRIVE SEWER PER MUNICIPAL DRAWING NO. R-358-00-03 PREPARED BY TRAFALGAR ENGINEERING LTD.

30 CENTURIAN DRIVE, SUITE 100
MARKHAM, ONTARIO L3R 8B8
TEL: (905) 475-1900
FAX: (905) 475-8335

HALTON REGION
1258 REBECCA STREET,
OAKVILLE
EXISTING
STORM DRAINAGE PLAN

| | |
|----------------------------|--------------------------|
| DESIGNED BY: R.P.B. | CHECKED BY: P.A.T. |
| SCALE: 1:750 | DATE: APRIL 2022 |
| PROJECT No: 2480 | FIGURE No: 3.1 |



- LEGEND:**
- PROPERTY BOUNDARY
 - PROPOSED STORM DRAINAGE BOUNDARY
 - EXTERNAL STORM DRAINAGE BOUNDARY
 - DRAINAGE AREA (HECTARES)
RUNOFF COEFFICIENT
CATCHMENT ID
 - EXTERNAL STORM DRAINAGE AREA (HECTARES)
RUNOFF COEFFICIENT
CATCHMENT ID
 - MAJOR SYSTEM FLOW
 - EXISTING CONTOUR
 - EXISTING STORM SEWER AND MANHOLE
 - MINOR SYSTEM FLOW
 - PERMEABLE PAVER

*NOTE: LAYOUT IS SCHEMATIC ONLY, DETAILS TO BE PROVIDED AT DETAILED DESIGN STAGE.

30 CENTURIAN DRIVE, SUITE 100
MARKHAM, ONTARIO L3R 8B8
TEL: (905) 475-1900
FAX: (905) 475-8335

HALTON REGION
1258 REBECCA STREET,
OAKVILLE
PROPOSED
STORM DRAINAGE PLAN

| | |
|----------------------------|--------------------------|
| DESIGNED BY: R.P.B. | CHECKED BY: P.A.T. |
| SCALE: 1:750 | DATE: APRIL 2022 |
| PROJECT No: 2480 | FIGURE No: 3.2 |