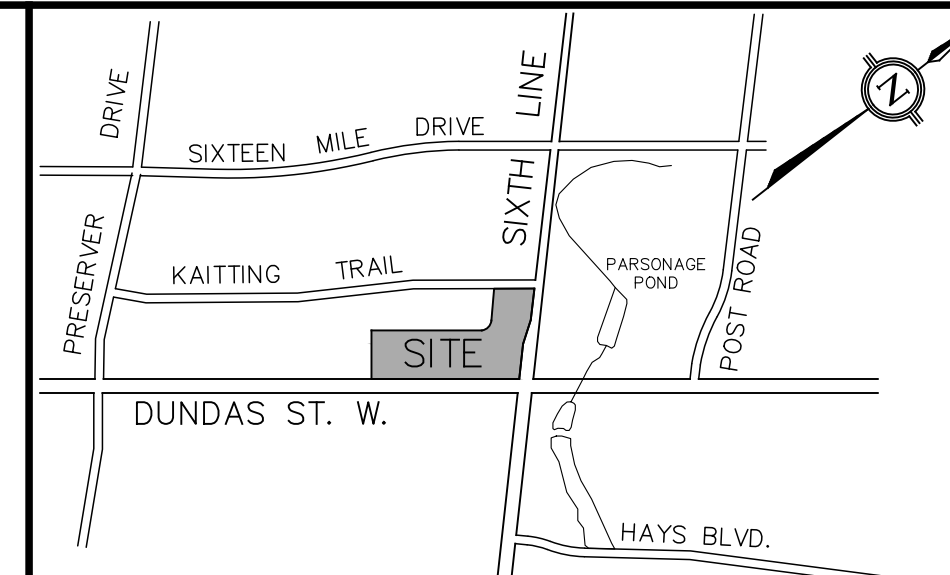
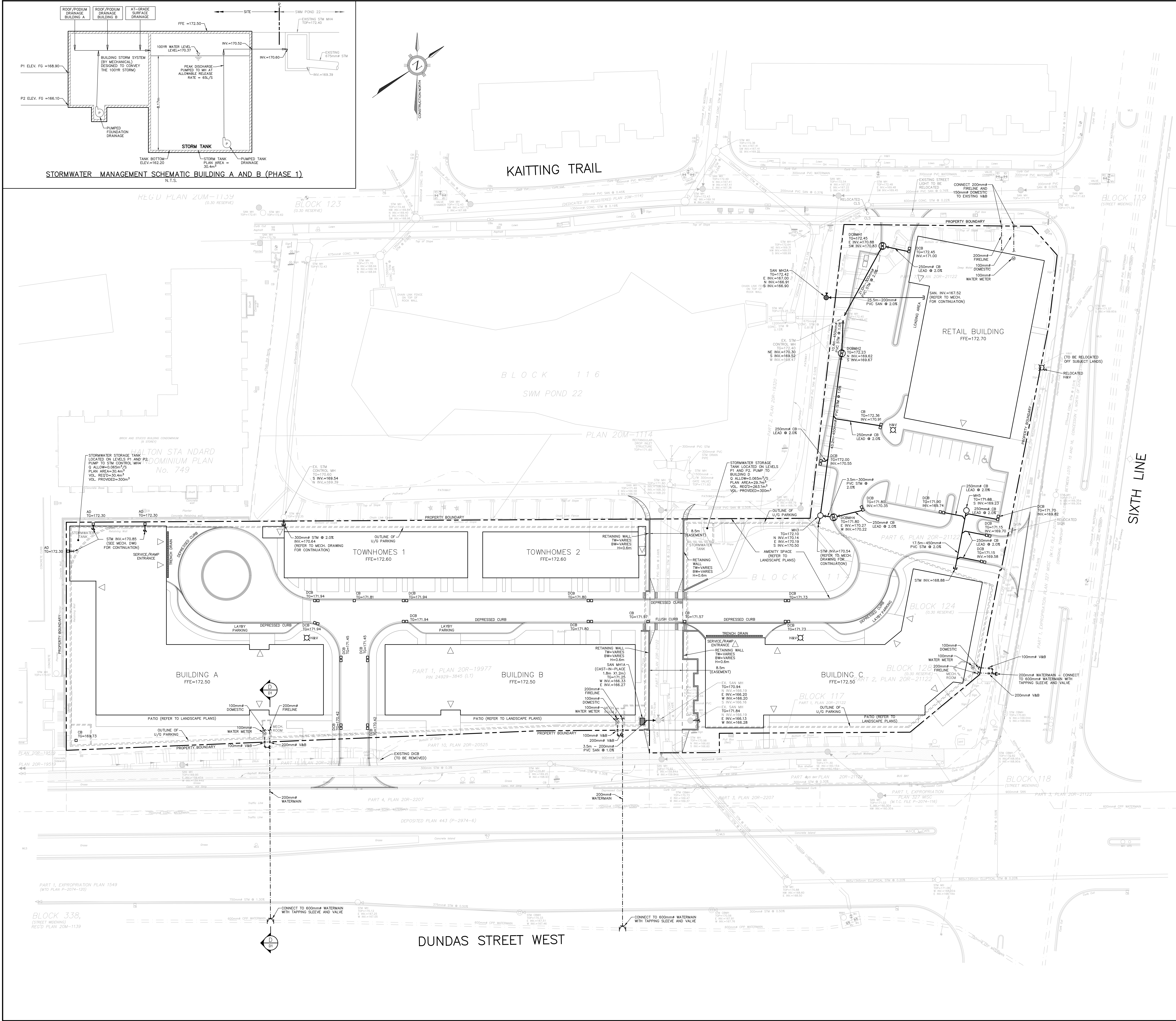


DATE: 2024/01/02  
DRAWN BY: CL  
CHECKED BY: PC  
DESIGNED BY: MW  
APPROVED BY: PC  
PROJECT NO: 1807  
PLAN NO: S1



- LEGEND**
- PROPOSED STORM MANHOLE
  - PROPOSED DOUBLE CATCHBASIN MANHOLE
  - PROPOSED CATCHBASIN
  - PROPOSED DOUBLE CATCHBASIN
  - PROPOSED SANITARY MANHOLE
  - PROPOSED CAST-IN-PLACE SANITARY MANHOLE
  - PROPOSED VALVE AND BOX
  - PROPOSED STORM SEWER
  - PROPOSED SANITARY SEWER
  - PROPOSED WATERMAIN

- EXISTING SERVICES LEGEND**
- EXISTING STORM MANHOLE
  - EXISTING SANITARY MANHOLE
  - EXISTING DOUBLE CATCHBASIN MANHOLE
  - EXISTING CATCHBASIN MANHOLE
  - EXISTING CATCHBASIN
  - EXISTING DOUBLE CATCHBASIN
  - EXISTING VALVE AND BOX
  - EXISTING STORM SEWER
  - EXISTING SANITARY SEWER
  - EXISTING WATERMAIN

NO.	DATE	BY/DRAWN	REVISIONS
2	12/12/24	MW/CL	ISSUED FOR ZONING
1	20/09/24	MW/CL	ISSUED FOR PRE-APPLICATION CONSULTATION

NO. DATE BY/DRAWN REVISIONS

DESIGNED BY: MW/CL  
APPROVED BY: PC

DESIGNED BY: MW/CL  
APPROVED BY: PC

DESIGNED BY: MW/CL  
APPROVED BY: PC

DESIGNED BY: MW/CL  
APPROVED BY: PC

DESIGNED BY: MW/CL  
APPROVED BY: PC

DESIGNED BY: MW/CL  
APPROVED BY: PC

DESIGNED BY: MW/CL  
APPROVED BY: PC

DESIGNED BY: MW/CL  
APPROVED BY: PC

DESIGNED BY: MW/CL  
APPROVED BY: PC

DESIGNED BY: MW/CL  
APPROVED BY: PC

DESIGNED BY: MW/CL  
APPROVED BY: PC

DESIGNED BY: MW/CL  
APPROVED BY: PC

DESIGNED BY: MW/CL  
APPROVED BY: PC

DESIGNED BY: MW/CL  
APPROVED BY: PC

DESIGNED BY: MW/CL  
APPROVED BY: PC

DESIGNED BY: MW/CL  
APPROVED BY: PC

DESIGNED BY: MW/CL  
APPROVED BY: PC

DESIGNED BY: MW/CL  
APPROVED BY: PC

DESIGNED BY: MW/CL  
APPROVED BY: PC

DESIGNED BY: MW/CL  
APPROVED BY: PC

DESIGNED BY: MW/CL  
APPROVED BY: PC

DESIGNED BY: MW/CL  
APPROVED BY: PC

DESIGNED BY: MW/CL  
APPROVED BY: PC

DESIGNED BY: MW/CL  
APPROVED BY: PC

DESIGNED BY: MW/CL  
APPROVED BY: PC