

KEY BUILDING PLAN (N.T.S.)

M&N MECHANICAL INC.
 DESIGN-BUILD CONTRACTORS
 1037 NORTH SERVICE ROAD, E.
 OAKVILLE, ONTARIO L6H 1A6
 PHONE: (416) 842-9200
 FAX: (416) 842-9204

THE KENNISCLARE CORPORATION BUILDERS & DEVELOPERS
 1075 NORTH SERVICE ROAD WEST #21
 OAKVILLE, ONTARIO L6H 2G2
 TEL: (416) 827-8625 FAX: (416) 827-7700

OFFICE
 TOWN OF OAKVILLE
 H.V.A.C. REVIEW
 HEATING AIR CONDITIONING
 VENTILATION KITCHEN EXHAUST
 PERMIT NO. 95-2005 DATE: JAN 23/95
 REVIEWED BY: [Signature]
 CONSTRUCTION MUST CONFORM TO THE ONTARIO BUILDING CODE

No.	REVISIONS	DATE	BY
2	ISSUED FOR BUILDING PERMIT	01/19/95	
1	ISSUED FOR CLIENT APPROVAL		

THIS DRAWING SHALL ONLY BE USED WHEN SIGNED FOR THE PURPOSE SPECIFIED ABOVE. CONTRACTOR MUST CHECK AND VERIFY ALL DIMENSIONS ON THE JOB AND REPORT ANY DISCREPANCY TO THE ENGINEER BEFORE PROCEEDING WITH THE WORK. DRAWINGS ARE NOT TO BE SCALED. ALL DRAWINGS AND SPECIFICATIONS ARE THE PROPERTY OF THE ENGINEER AND MUST BE RETURNED AT COMPLETION OF THE WORK.

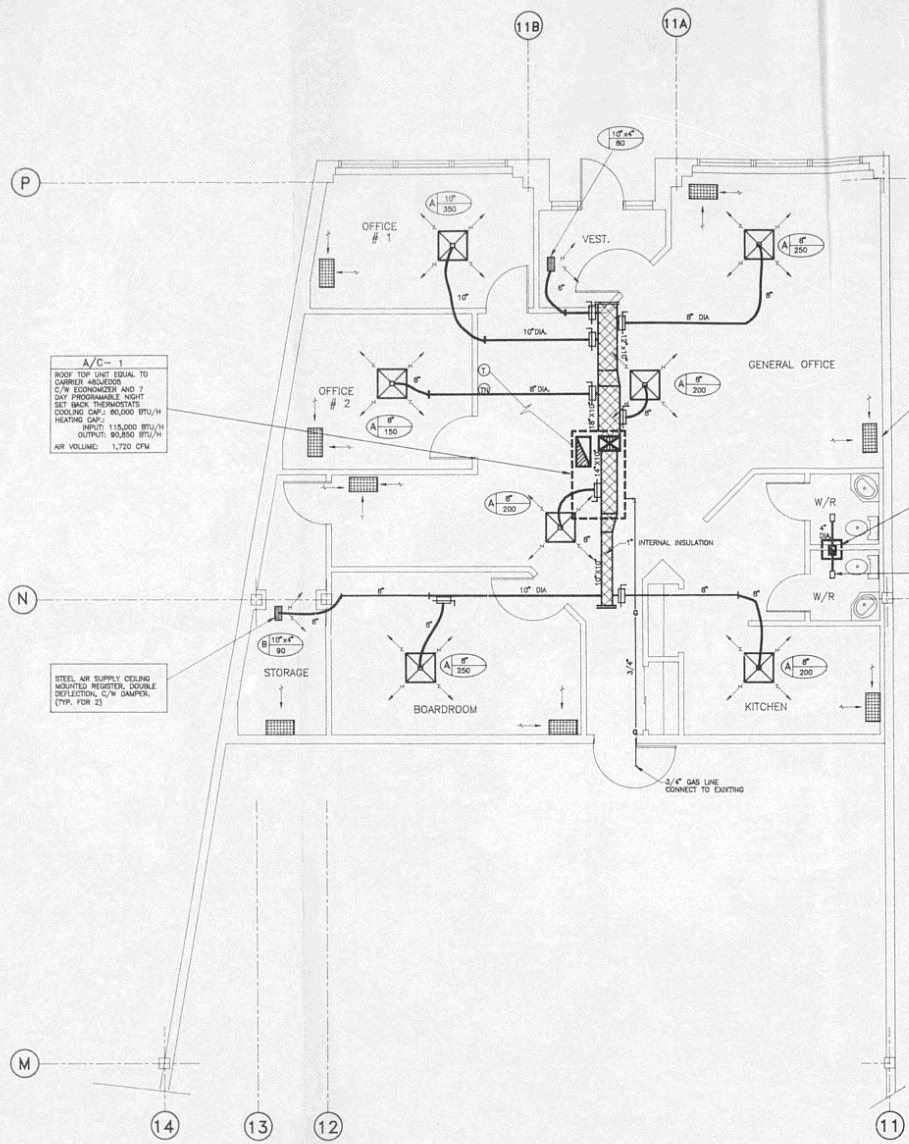
DRAWN BY: CAD
 DESIGN BY: MJS
 CHECKED BY: MJS
 DATE: 30 JANUARY 1995

EMESTON LTD.
 CONSULTING ENGINEERS
 Toronto Tel: (416) 848-4252 Ontario

PROJECT
NELLES JAMESBURY OFFICE
 1155 NORTH SERVICE ROAD, WEST, UNIT # 17
 OAKVILLE, ONTARIO

TITLE
 H.V.A.C. JAN 26 1995
 [Signature]

TRADE: MECHANICAL PROJECT: [Signature]
 SCALE: 1:50 No. 9302
 REV. SHEET DRAWING
 2 1 OF 1 No. M-1

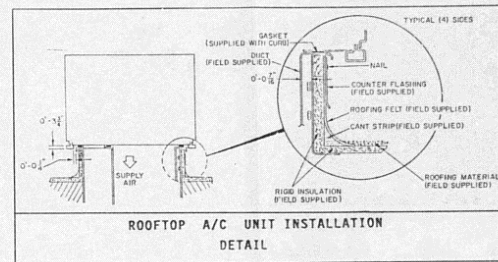


A/C-1
 ROOF TOP UNIT EQUAL TO
 CARRIER 400000
 C/W ECONOMIZER AND 7
 DAY PROGRAMMABLE NIGHT
 SET BACK THERMOSTATS
 COOLING CAP: 80,000 BTU/H
 HEATING CAP: 115,000 BTU/H
 INPUT: 80,000 BTU/H
 AIR VOLUME: 1,720 CFM

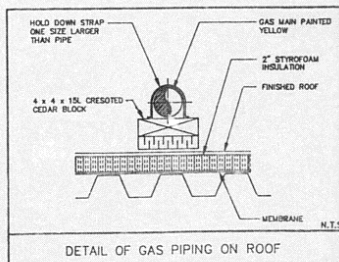
STEEL AIR SUPPLY CEILING
 MOUNTED REGISTER, DOUBLE
 DEFLECTION, C/W DAMPER.
 (TYP. FOR 2)

24" RETURN AIR
 1/2" ISO GASKET GRIFFLE
 (OFF-WHITE)
 C/W 4 FT. LONG INSULATED
 DUCT ABOVE (TYP.)

EF-1
 IN-LINE EXHAUST FAN EQUAL
 TO DELTA 1025, MOUNT IN
 CEILING SPACE AND EXHAUST
 THROUGH ROOF DECK, 1000W
 #35 PA, INTERCONNECT WITH
 LIGHT SWITCH



ROOFTOP A/C UNIT INSTALLATION
 DETAIL

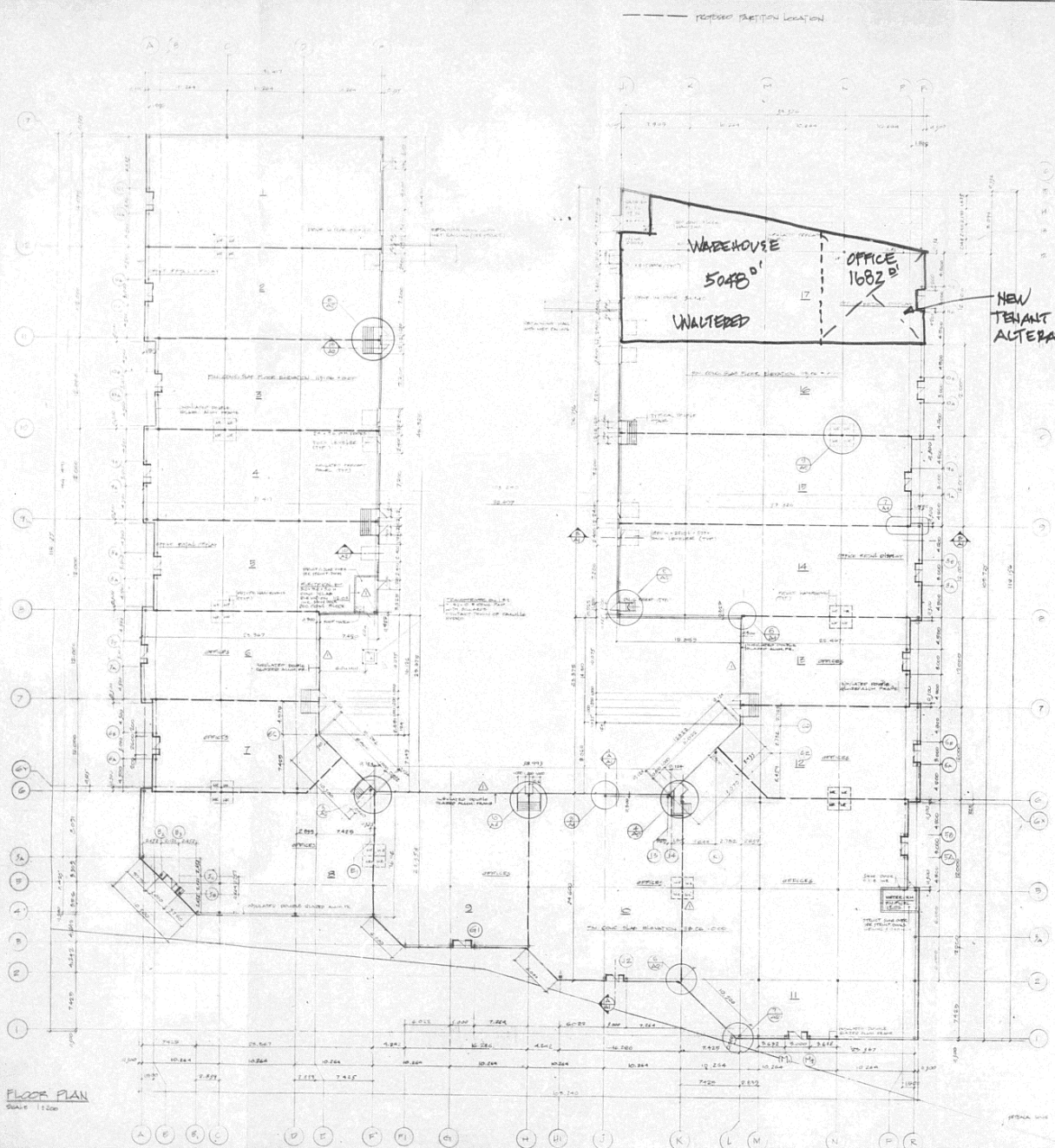


DETAIL OF GAS PIPING ON ROOF

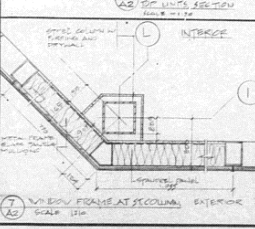
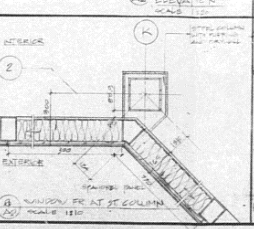
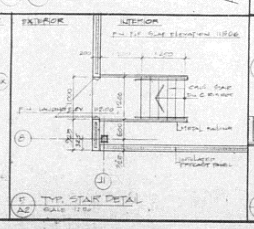
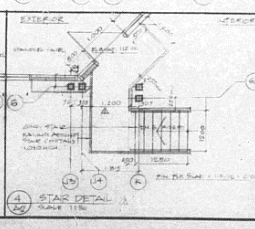
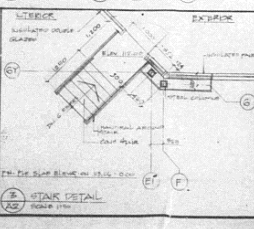
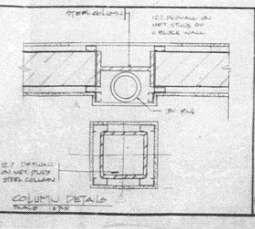
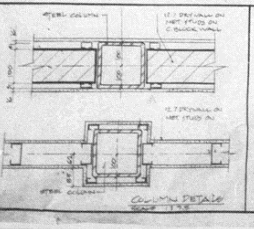
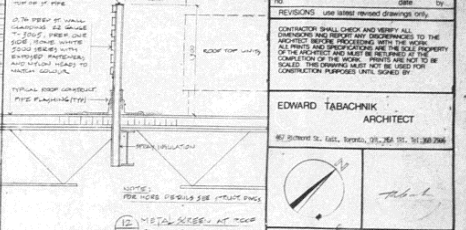
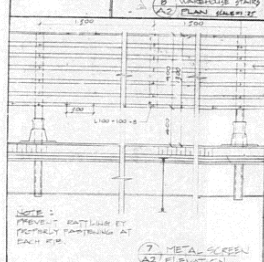
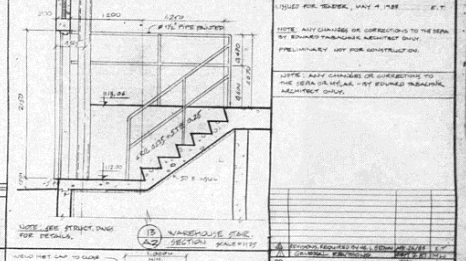
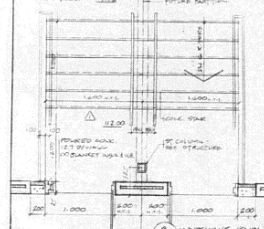
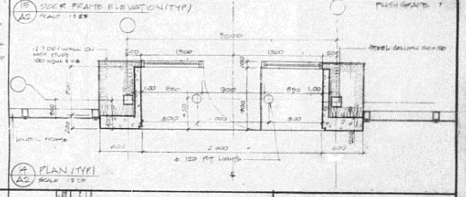
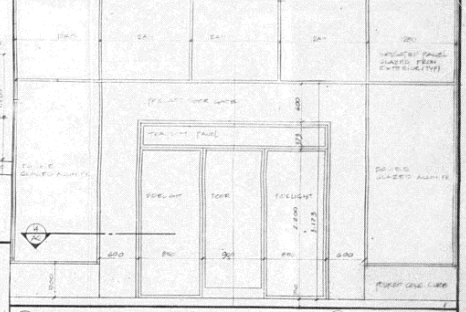
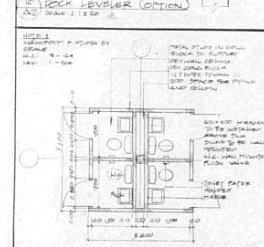
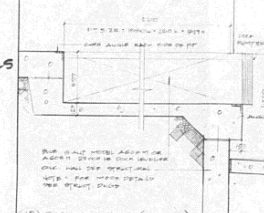
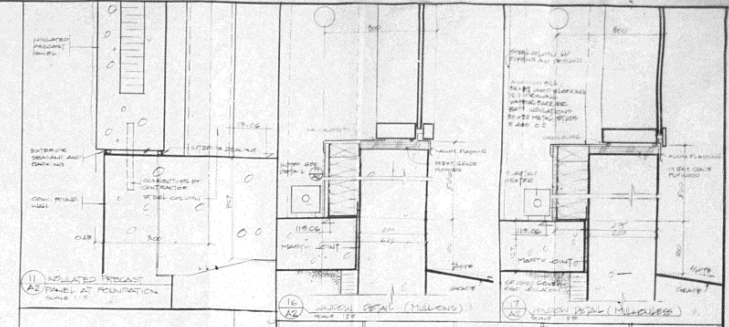
NOTE:
 GAS PIPING TO BE PROPERLY SUPPORTED FROM ROOF, SUPPORTED WITH PROPER HANGERS SUITABLE FOR SIZE OF PIPING. PIPING TO BE STEEL SCHEDULE 40 INCLUDING FITTINGS, BARE STEEL AND FITTINGS MUST BE CLEAN AND PAINTED WITH PRIMER OR EXTERIOR PAINT. EXPANSION CONTROL LUGS SHOULD BE USED ON PIPE SIZES OF 2" OR LESS WHENEVER THE UNRESTRAINED PIPE LENGTH IS AT LEAST 10FT. LARGER DIA. PIPING TO BE INSTALLED WITH EXPANSION JOINTS.

LEGEND	
SYMBOL	DESCRIPTION
[Symbol]	SUPPLY AIR DUCT - UP
[Symbol]	SUPPLY AIR DUCT - DOWN
[Symbol]	RETURN AIR DUCT - UP
[Symbol]	RETURN AIR DUCT - DOWN
[Symbol]	DOUBLE OR SINGLE LINE DUCTS - RIGID
[Symbol]	DUCTS - FLEXIBLE
[Symbol]	AIR DUCT IN GROUND
[Symbol]	RISE IN DUCT
[Symbol]	DROP IN DUCT
[Symbol]	RETURN AIR GRIFFLE
[Symbol]	SUPPLY AIR LINEAR DIFFUSER
[Symbol]	SUPPLY AIR DIFFUSER 24" X 24"
[Symbol]	SUPPLY AIR DIFFUSER 12" X 12"
[Symbol]	FLEX. CONNECTION
[Symbol]	AIR BALANCING DAMPER
[Symbol]	SPLIT DAMPER
[Symbol]	BACKDRIFT DAMPER
[Symbol]	FIRE DAMPER
[Symbol]	INTERNAL ACOUSTIC DUCT INSULATION
[Symbol]	EXTERNAL INSULATION
[Symbol]	THERMOSTAT - ELECTRICAL
[Symbol]	THERMOSTAT - PNEUMATIC
[Symbol]	NIGHT SET-BACK THERMOSTAT
[Symbol]	FAN SPEED CONTROL (VARIABLE)
[Symbol]	UNIT HEATER
[Symbol]	EL. BASEBOARD HEATER C/W BUILT-IN THERMOSTAT
[Symbol]	EXHAUST FAN - CEILING MOUNTED
[Symbol]	EXHAUST FAN - WALL MOUNTED
[Symbol]	TYPE OF DIFFUSER
[Symbol]	SIZE OF GRIFFLES, REGISTER, X CORN. CAPACITY (CFM)

- NOTES:**
- STRAP ALL OUTDOORS TO U/S DECK A MAXIMUM 6 FT. ON CENTRE.
 - PROVIDE CANAL FLEX CONNECTION ON ALL SIPS (SUPPLY AND RETURN).
 - SEAL ALL DUCTWORK WITH SILICONE.
 - MAX. HORIZONTAL TRAVEL FOR ALL FLEX. DUCT TO BE 5 FT.
 - ALL FLEXIBLE DUCTS TO BE TEST PRESSURE TO DECK OR HANGER WIRE.
 - ALL DUCTWORK TO BE STRAIGHT PLUMB AND LEVEL.
 - RETURN AIR GRIFFLES TO HAVE 4 FT. LONG INSULATED DUCT AS PER ENDSCLARE CO. DRAWING.



FLOOR PLAN
SCALE 1:100



FLOOR PLAN, DETAILS

**ENNISCLARE CENTRE
BLOCKS 5 & 6
BUILDING 2**

DATE 14.02.07
SIGNED BY M.L.W.
CHECKED BY E.T.

DATE 06.05.07
SCALE 1:100

A2