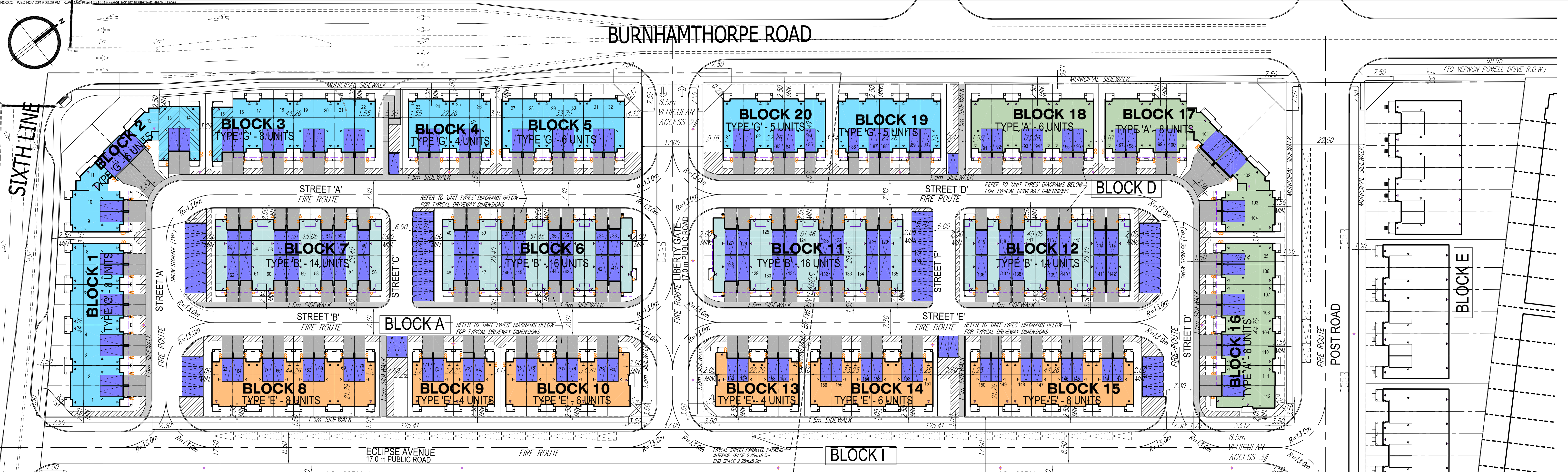
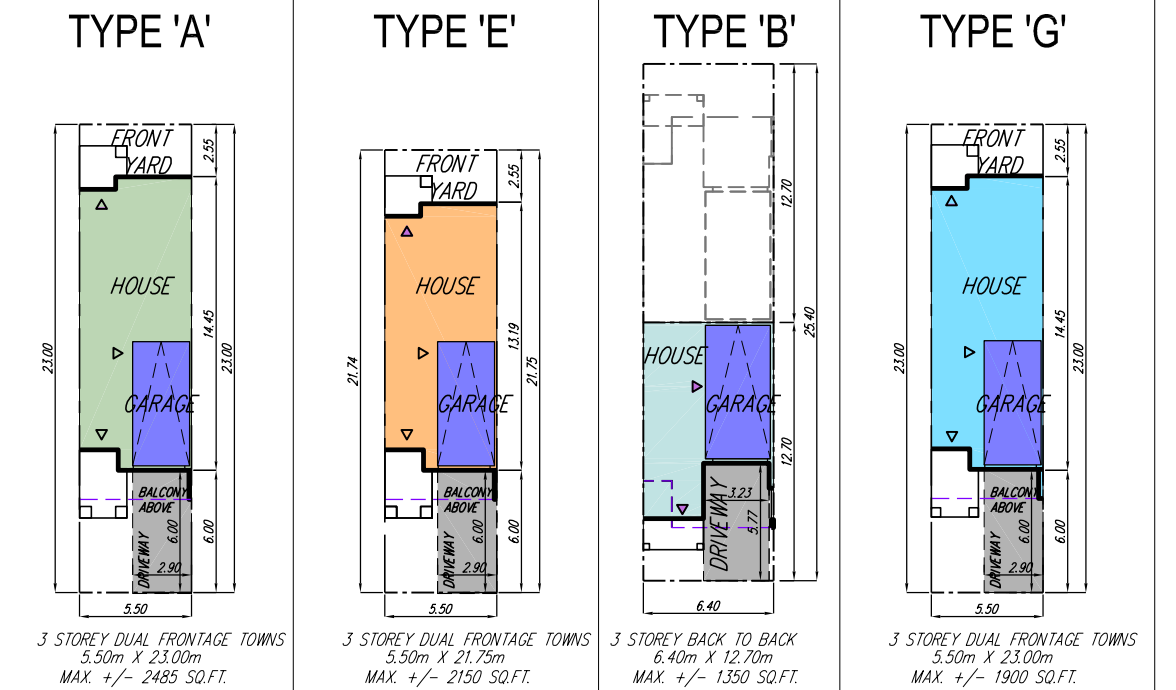


BURNHAMTHORPE ROAD



UNIT TYPES



S.W.M.POND
BLOCK G

SCHOOLPARK ACCESS

FUTURE SCHOOL BLOCK
BLOCK H

It is the builder's complete responsibility to ensure that all plans submitted for approval fully comply with the Architectural Guidelines and all applicable regulations and requirements including zoning provisions and any provisions in the applicable zoning by-law. The Architect is not responsible in any way for examining or approving the building plans or working drawings with respect to any zoning or building code or permit matter or that any house can be properly built or located on the lot.

This is to certify that these plans comply with the applicable Architectural Design Guidelines approved by the Town of Oakville.

TENURE: COMMON ELEMENT CONDOMINIUM

SITE PLAN

SITE STATISTICS

BLOCK A (CONDOMINIUM)	
ZONING CATEGORY: GU	
AREAS: (S.M.)	(%)
SITE AREA	100.00
BUILDING AREA	48.00
ROAD AND SIDEWALK AREA	25.00
DRIVEWAY AREA	6.00
LANDSCAPE AREA	18.20
NUMBER OF UNITS:	
TYPE A	0
TYPE E	18
TYPE B	30
TYPE G	32
TOTAL	80
DENSITY: (UNITS/ACRE)	23.38
VISITOR PARKING: SPACES PROVIDED	23
RATIO	0.288
SNOW STORAGE CALC.:	
HARD SURFACE AREA	4556.97
SNOW STORAGE AREA	506.81
RATIO	13.17%

BLOCK D (CONDOMINIUM)	
ZONING CATEGORY: GU	
AREAS: (S.M.)	(%)
SITE AREA	14137.78
BUILDING AREA	6780.83
ROAD AND SIDEWALK AREA	3559.83
DRIVEWAY AREA	553.71
LANDSCAPE AREA	2803.41
NUMBER OF UNITS:	
TYPE A	22
TYPE E	18
TYPE B	30
TYPE G	10
TOTAL	80
DENSITY: (UNITS/ACRE)	22.90
VISITOR PARKING: SPACES PROVIDED	23
RATIO	0.288
SNOW STORAGE CALC.:	
HARD SURFACE AREA	4553.54
SNOW STORAGE AREA	526.43
RATIO	11.6%

ONTARIO BUILDING CODE MATRIX:

BUILDING	Code Matrix	BUILDING	Code Matrix	BUILDING	Code Matrix	BUILDING	Code Matrix
BUILDING 1	...	BUILDING 6	...	BUILDING 11	...	BUILDING 16	...
BUILDING 2	...	BUILDING 7	...	BUILDING 12	...	BUILDING 17	...
BUILDING 3	...	BUILDING 8	...	BUILDING 13	...	BUILDING 18	...
BUILDING 4	...	BUILDING 9	...	BUILDING 14	...	BUILDING 19	...
BUILDING 5	...	BUILDING 10	...	BUILDING 15	...	BUILDING 20	...

Plans and drawings approved pursuant to the Planning Act.
Planning & Development Department
15-May-2026
Town of Oakville

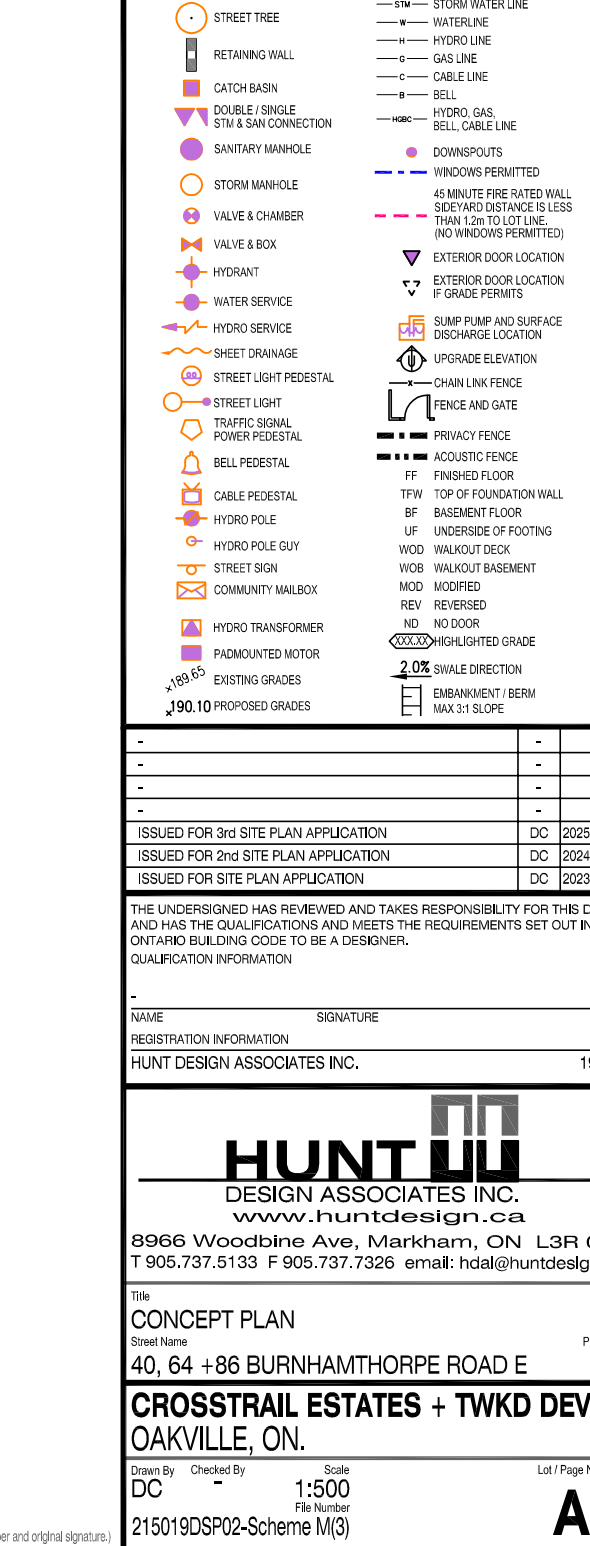
LANDSCAPE AREA CALCULATION (CALCULATED PER P.O.L.)

P.O.L. AREA (S.M.)	UNIT BUILDING AREA (S.M.)	DRIVEWAY AREA (S.M.)	STREET PAVEMENT AREA (S.M.)	LANDSCAPE AREA (S.M.)	LANDSCAPE AREA (%)	
LOF1	181.35	87.87	13.30	4.82	76.30	39.25%
LOF2	144.01	88.82	13.30	8.43	83.54	58.02%
LOF3	142.01	89.82	13.30	8.43	83.54	58.02%
LOF4	139.04	88.82	13.30	8.43	83.54	58.02%
LOF5	137.04	88.82	13.30	8.43	83.54	58.02%
LOF6	135.04	88.82	13.30	8.43	83.54	58.02%
LOF7	133.04	88.82	13.30	8.43	83.54	58.02%
LOF8	131.04	88.82	13.30	8.43	83.54	58.02%
LOF9	129.04	88.82	13.30	8.43	83.54	58.02%
LOF10	127.04	88.82	13.30	8.43	83.54	58.02%
LOF11	125.04	88.82	13.30	8.43	83.54	58.02%
LOF12	123.04	88.82	13.30	8.43	83.54	58.02%
LOF13	121.04	88.82	13.30	8.43	83.54	58.02%
LOF14	119.04	88.82	13.30	8.43	83.54	58.02%
LOF15	117.04	88.82	13.30	8.43	83.54	58.02%
LOF16	115.04	88.82	13.30	8.43	83.54	58.02%
LOF17	113.04	88.82	13.30	8.43	83.54	58.02%
LOF18	111.04	88.82	13.30	8.43	83.54	58.02%
LOF19	109.04	88.82	13.30	8.43	83.54	58.02%
LOF20	107.04	88.82	13.30	8.43	83.54	58.02%

LANDSCAPE AREA CALCULATION (CALCULATED PER P.O.L.)

P.O.L. AREA (S.M.)	UNIT BUILDING AREA (S.M.)	DRIVEWAY AREA (S.M.)	STREET PAVEMENT AREA (S.M.)	LANDSCAPE AREA (S.M.)	LANDSCAPE AREA (%)	
LOF21	105.04	88.82	13.30	8.43	83.54	58.02%
LOF22	103.04	88.82	13.30	8.43	83.54	58.02%
LOF23	101.04	88.82	13.30	8.43	83.54	58.02%
LOF24	99.04	88.82	13.30	8.43	83.54	58.02%
LOF25	97.04	88.82	13.30	8.43	83.54	58.02%
LOF26	95.04	88.82	13.30	8.43	83.54	58.02%
LOF27	93.04	88.82	13.30	8.43	83.54	58.02%
LOF28	91.04	88.82	13.30	8.43	83.54	58.02%
LOF29	89.04	88.82	13.30	8.43	83.54	58.02%
LOF30	87.04	88.82	13.30	8.43	83.54	58.02%
LOF31	85.04	88.82	13.30	8.43	83.54	58.02%
LOF32	83.04	88.82	13.30	8.43	83.54	58.02%
LOF33	81.04	88.82	13.30	8.43	83.54	58.02%
LOF34	79.04	88.82	13.30	8.43	83.54	58.02%
LOF35	77.04	88.82	13.30	8.43	83.54	58.02%
LOF36	75.04	88.82	13.30	8.43	83.54	58.02%
LOF37	73.04	88.82	13.30	8.43	83.54	58.02%
LOF38	71.04	88.82	13.30	8.43	83.54	58.02%
LOF39	69.04	88.82	13.30	8.43	83.54	58.02%
LOF40	67.04	88.82	13.30	8.43	83.54	58.02%

KEY MAP - NOT TO SCALE



HUNT
DESIGN ASSOCIATES INC.
WWW.HUNTDESIGN.COM
8966 Woodbine Ave, Markham, ON L3R 0J7
F 905.737.5133 F 905.737.7266 email: hunt@huntdesign.com

CONCEPT PLAN
40-64-88 BURNHAMTHORPE ROAD E
CROSSTAIL ESTATES + TWKD DEV. OAKVILLE, ON.

Scale: 1:500
Date: 15-May-2026
Sheet: A1