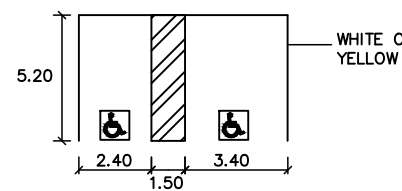
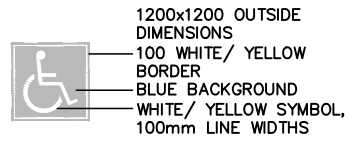


PAVEMENT MARKINGS

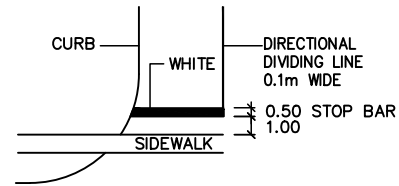
A- LANE LINES

- ① 10cm SOLID WHITE LINE
- ② 50cm SOLID WHITE LINE
- ③ WHITE HATCHING AS SHOWN
- ④ 10cm SOLID YELLOW LINE
- ⑤ 50cm SOLID YELLOW LINE

B- HANDICAPPED PARKING PAVEMENT GRAPHICS, AS PER TOWN OF OAKVILLE DESIGN STANDARDS AND AODA



C- STOP BAR



LEGEND:

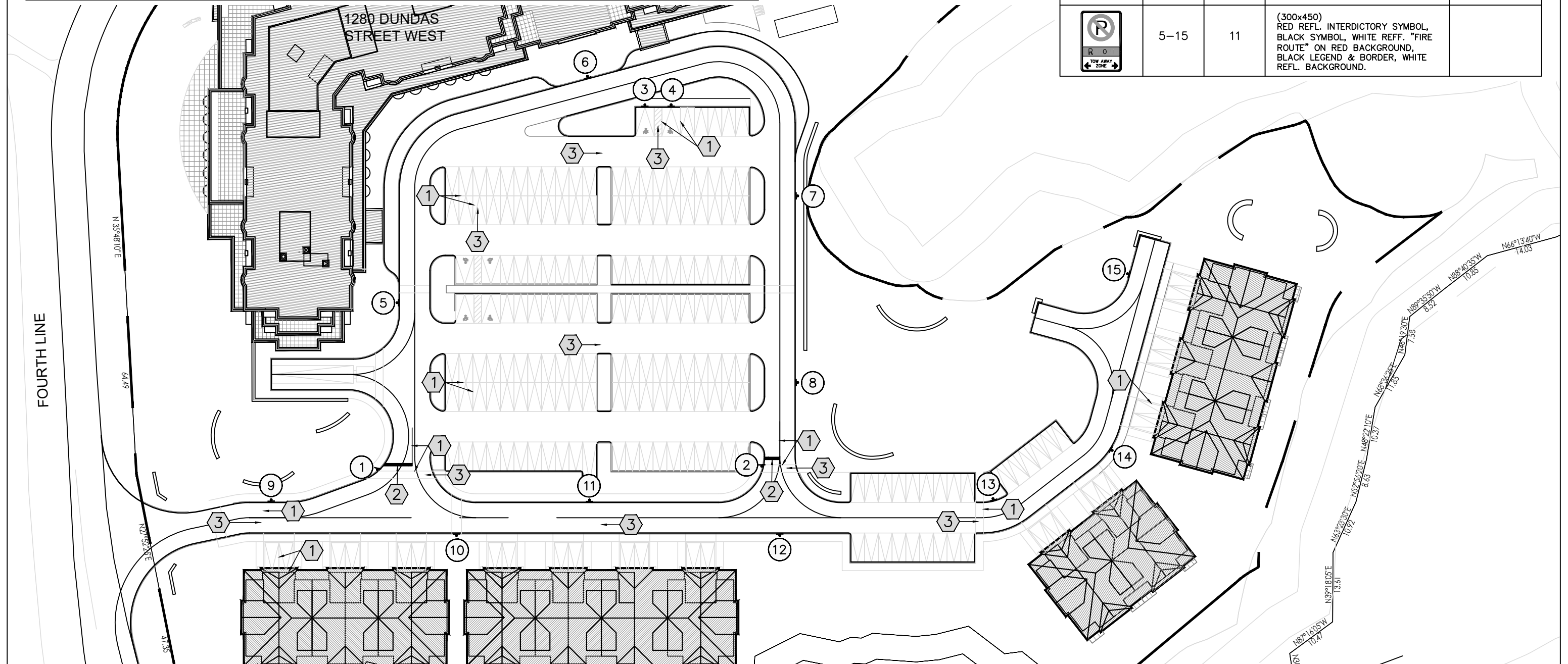
- ⬆ POST-MOUNTED SIGN
- ⊗ XX SIGN LOCATION

NOTES:

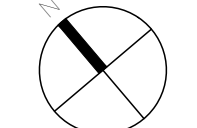
- ALL SIGNS ARE STEEL POST-MOUNTED, UNLESS OTHERWISE INDICATED.
- - ALL SIGNS ARE PER "ONTARIO TRAFFIC MANUAL", LATEST EDITION.

TRAFFIC SIGNS

SIGN	LOCATION	NEW QUANTITY REQUIRED	COLOURS	REMARKS
	1-2	2	Ra-1 (600x600) WHITE REFL. LEGEND & BORDER, RED REFL. BACKGROUND.	
	3-4	2	Rb-93 (300x600) RED REFL. INTERDICTIONARY BLUE REFL. SYMBOL OF ACCESS & SYMBOL BORDER, BLACK SYMBOL, LEGEND & BORDER, WHITE REFL. BACKGROUND.	
	5-15	11	(300x450) RED REFL. INTERDICTIONARY SYMBOL, BLACK SYMBOL, WHITE REFL. "FIRE ROUTE" ON RED BACKGROUND, BLACK LEGEND & BORDER, WHITE REFL. BACKGROUND.	



LEA Consulting Ltd.
 Consulting Engineers and Planners
 www.LEA.ca



Project No.
20253-210

Date
DEC. 21, 2021

1280 DUNDAS STREET WEST
 OAKVILLE ONTARIO

1:750

SITE PLAN
 PAVEMENT MARKINGS
 AND SIGNAGE PLAN

Drawing No.
006