

SCOPED TREE ASSESSMENT REPORT

550 KERR STREET, OAKVILLE ONTARIO

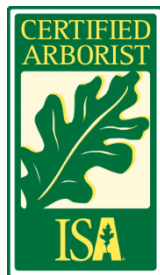
Prepared

MAY 2019

Prepared by

MICHELLE PEETERS

ISA CERTIFIED ARBORIST ON-2129A



A handwritten signature in black ink that reads "M. Peeters".

MICHELLE PEETERS
LANDSCAPE DESIGNER
BLA, DIP. HORT. TECH., OALA ASSOC., ISA CERTIFIED ARBORIST



Barry Murphy
Landscape architect
OALA, CSLA

RKLA JOB # 18-201

**RON KOUDYS
LANDSCAPE
ARCHITECTS INC**



TABLE OF CONTENTS

Introduction	1
Scope of Service.....	1
Methodology	1
Inventory Data and Preservation/Removal Recommendations	2
Executive Summary	3
Disclaimer	3
Scoped Tree Assessment Plan	3

INTRODUCTION

Ron Koudys Landscape Architects Inc (RKLA) was retained to conduct a scoped tree inventory and assessment at 550 Kerr Street in Oakville Ontario in anticipation of the proposed development and widening of Kerr Street.

SCOPE OF SERVICE

Our firm was instructed to undertake an assessment of the existing trees located within the scoped area as outlined in figure 1.

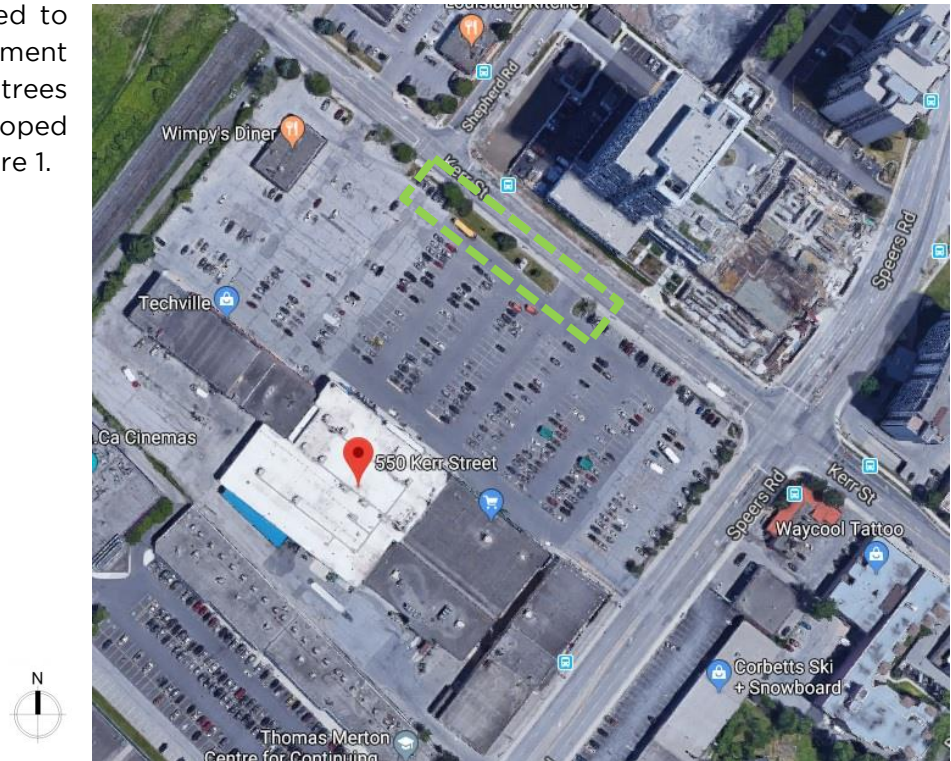


Figure 1 - scope of tree inventory and assessment NTS

METHODOLOGY

Field work was completed on August 2, 2018 by RKLA. The topographic survey prepared by Verhaegen Stubberfield Hartley Brewer Bezaire Inc Ontario Land Surveyors dated April 6, 2010 was used as the base for the field work.

A comprehensive inventory of all trees within this scoped area was completed. Trees were not tagged in the field.

The following information was recorded for each tree:

- Species
- Diameter at breast height (DBH) (centimeters)
- Crown radius (meters)
- Crown Condition (overall general vigour of crown)
- Structural Condition (good, fair, poor)
- General Comments

INVENTORY DATA AND PRESERVATION/REMOVAL RECOMMENDATIONS

Health Assessment Criteria

Crown Condition Classification

- 5 Healthy: less than 10% crown decline
- 4 Slight decline: 11% - 30% crown decline
- 3 Moderate decline: 31% - 60% crown decline
- 2 Severe decline: 61% - 90% crown decline
- 1 Dead

Structural Condition Classification

Good: Defects if present are minor (e.g. twig dieback, small wounds); defective tree part is small (e.g. 5-8 cm diameter limb) providing little if any risk.

Fair: Defects are numerous or significant (e.g. dead scaffold limbs); defective parts are moderate in size (e.g. limb greater than 5-8 cm in diameter).

Poor: Defects are severe (e.g. trunk cavity in excess of 50%); defective parts are large (e.g. majority of crown).

Dead: Tree exhibits no signs of life.

Tree Data and Recommendations

Recommendations below are based on a combination of tree health data and grading/construction requirements of the proposed development and street widening.

GENERAL INFORMATION			SIZE		HEALTH			RECOMMENDATION
ID #	BOTANICAL NAME	COMMON NAME	DBH (cm)	CANOPY RADIUS (m)	CROWN CONDITION 1 - DEAD 5 - HEALTHY	STRUCTURAL CONDITION	COMMENTS	PRESERVE OR REMOVE
1	<i>Gleditsia triacanthos</i> <i>var. inermis</i> 'Shademaster'	Shademaster Honeylocust	30	4	5	good	One large scaffold branch nearly equal in diameter to trunk. Immediately adjacent to street light. Very small growing space - sandwiched between concrete sidewalk and parking lot	Remove - tree is in direct conflict with proposed road widening
2	<i>Pinus nigra</i>	Austrian Pine	35	3.5	3	poor	Main leader is no longer present. Scaffold branches competing for apical dominance. Low, uneven crown. Browning needles	Remove - tree is in direct conflict with proposed road widening
3	<i>Quercus robur</i> 'Fastigiata'	Pyramidal English Oak	6	0.5	5	good	Recently planted - stakes still present. Edge of root ball visible above grade. Memorial tree with plaque at base.	Remove - tree is in direct conflict with proposed road widening
4	<i>Acer platanoides</i>	Norway Maple	30	4	3	poor	Dead leader still present. Mature sucker from base is forming part of the canopy. Onesided, uneven crown. Trunk defects.	Remove - tree is in very poor condition.
5	<i>Acer platanoides</i>	Norway Maple	15	2	3	poor	Remainin leader is only a stump. One scaffold branch has taken apical dominance and forms the entire canopy. One sided, uneven crown. Major trunk wound - significant defect >50% of trunk circumference at base. No trunk flare.	Remove - tree is in direct conflict with proposed road widening
6	<i>Ulmus pumila</i>	Siberian Elm	12, 12, 10, 8	4	4	fair	Multistem 4. Base is completely surrounded by concrete and asphalt. Tip dieback. No trunk flare (asphalt right up to trunk. Previous pruning cuts to elevate crown.	Remove - tree is in direct conflict with proposed road widening

EXECUTIVE SUMMARY

General Summary

No rare, endangered, or unusual species were observed on site. No specimen trees in terms of species or quality were observed on site. All trees included in inventory are common to the geographic area and are typical of a commercial site.

All trees are to be removed in anticipation of the widening of Kerr Street.

Note that the Pyramidal English Oak (tree #3) has a memorial plaque at its base dedicated to Lynda Sophia Graves.

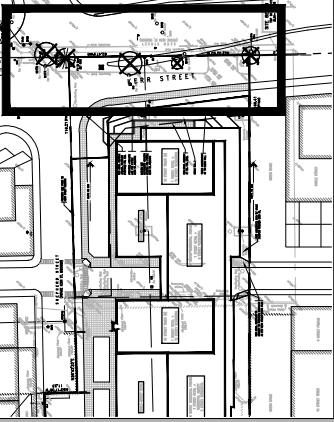
DISCLAIMER

The assessment of the trees presented within this report has been made using accepted arboricultural techniques. These include a visual examination of the above-ground parts of each tree for structural defects, scars, external indications of decay, evidence of insect presence, discoloured foliage, the general condition of the trees and the surrounding site, as well as the proximity of property and people. None of the trees examined were dissected, cored, probed, or climbed, and detailed root crown examinations involving excavation were not undertaken.



Notwithstanding the recommendations and conclusions made in this report, it must be realized that trees are living organisms and their health and vigour is constantly changing. They are not immune to changes in site conditions or seasonal variations in the weather.

SCOPED TREE ASSESSMENT PLAN

KEY MAP NTS



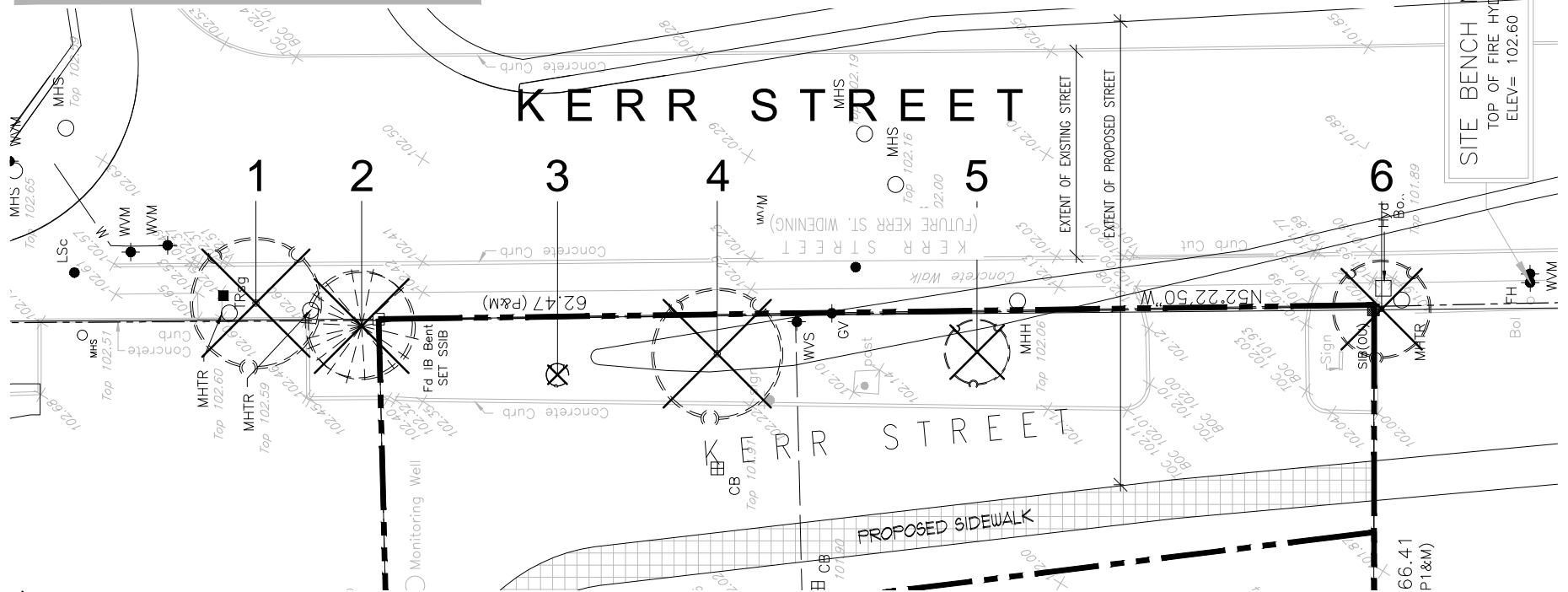
LEGEND

-  8 EXISTING DECIDUOUS TREES TO BE REMOVED
← TREE NUMBER
-  9 EXISTING CONIFEROUS TREES TO BE REMOVED
← TREE NUMBER

TREE REMOVAL/PRESERVATION RECOMMENDATIONS

- | | | |
|---|-------------------------|--------|
| 1 | SHADEMASTER HONEYLOCUST | REMOVE |
| 2 | AUSTRIAN PINE | REMOVE |
| 3 | PYRAMIDAL ENGLISH OAK | REMOVE |
| 4 | NORWAY MAPLE | REMOVE |
| 5 | NORWAY MAPLE | REMOVE |
| 6 | SIBERIAN ELM | REMOVE |

REFER TO SCOPED TREE ASSESSMENT REPORT FOR ADDITIONAL INFORMATION



SCOPED TREE ASSESSMENT PLAN



**RON KOUDYS
LANDSCAPE
ARCHITECTS INC.**
368 Oxford Street East, London, Ontario, N6A 1V7
Tel: (519) 667-3322, Fax: (519) 645-2474

TITLE:

SCOPED TREE ASSESSMENT

550 KERR STREET, OAKVILLE ON

PROJECT NUMBER:

18-201

SCALE:

1:400

DRAWN BY: RKLA Inc.

DATE: 2019.05.29

DRAWING NUMBER:

18-201Lb