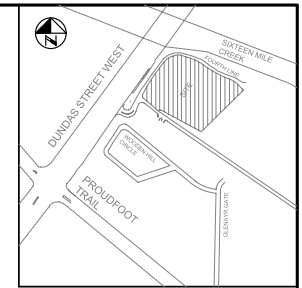
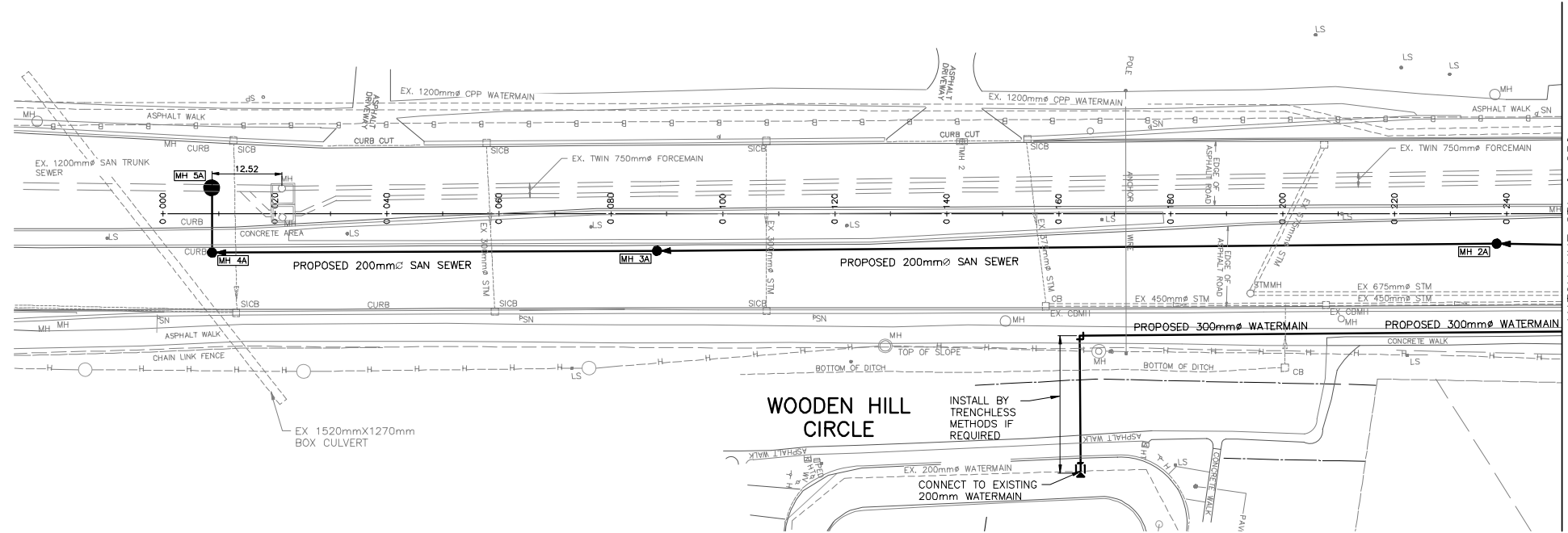


CONCEPTUAL PLAN AND PROFILE SKETCH

PROPOSED ALIGNMENT OF WATERMAIN AND SANITARY SEWER SHOWN SCHEMATICALLY FOR DISCUSSION PURPOSES TO SUPPORT 1280 DUNDAS STREET WEST ZBA APPLICATION



KEY PLAN
N.T.S.



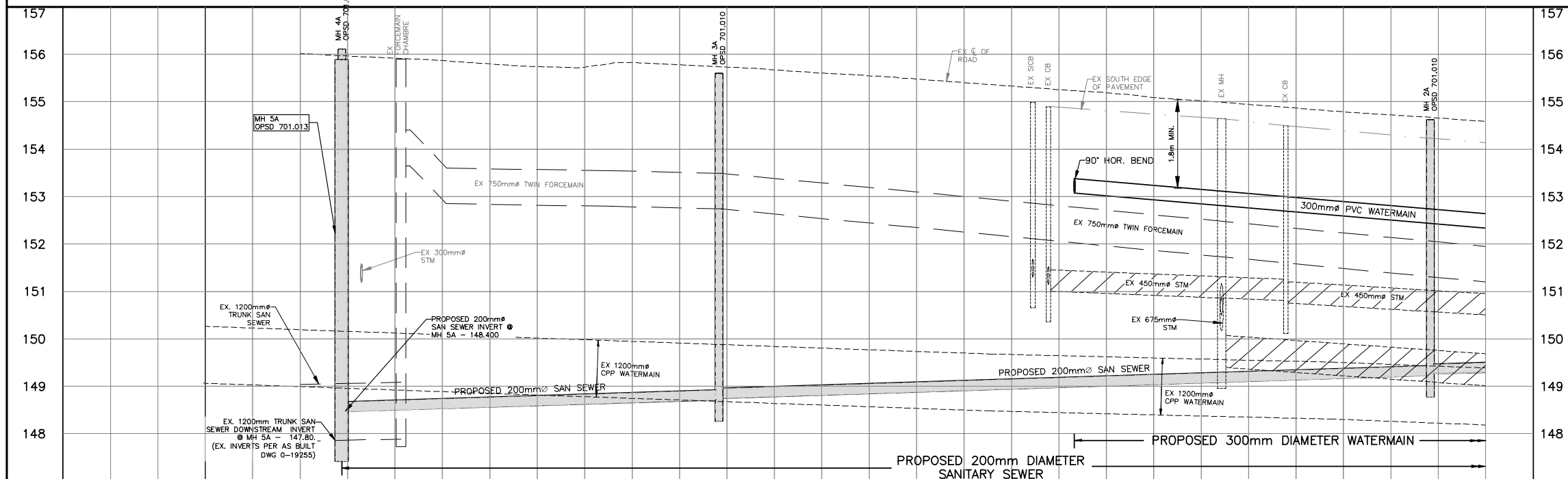
MATCH LINE STA. 0+250
SEE SHEET PP2

LEGEND

- LS EX LIGHT STANDARD
- MH EX MANHOLE
- DSICB EX DOUBLE SIDE INLET CATCHBASIN
- SICB EX SIDE INLET CATCHBASIN
- CB EX CATCHBASIN
- EX STORM SEWER
- EX SANITARY FORCEMAIN
- EX WATER
- EX BELL CANADA CONDUIT
- EX HYDRO CABLE
- G EX GAS MAIN
- PLUG
- PROP WATERMAIN
- PROP SANITARY SEWER
- PROP MANHOLE
- PROP HYDRANT AND VALVE
- PROP WATERMAIN TEE

DUNDAS STREET WEST (REG RD 5)

THE LOCATION OF UTILITIES IS APPROXIMATE ONLY. THE CONTRACTOR SHALL PROVE THE LOCATION OF UTILITIES AND SHALL BE RESPONSIBLE FOR ADEQUATE PROTECTION FROM DAMAGE



ELEVATIONS	156.01 156.014	155.82 155.819	155.60 155.796	155.73 155.730	155.78 155.779	155.67 155.672	155.65 155.578	155.40 155.401	155.28 155.255	155.08 155.088	154.84 154.842	154.79 154.786	154.66 154.656	ELEVATIONS
WATERMAIN INVERTS	11.6m - 200mm PVC SAN @ 0.32%											300mm PVC WATERMAIN	WATERMAIN INVERTS	
SANITARY INVERTS	79.5m - 200mm PVC SAN @ 0.32%											150.0m - 200mm PVC SAN @ 0.32%	SANITARY INVERTS	
CHAINAGE	0+000	0+020	0+040	0+060	0+080	0+100	0+120	0+140	0+160	0+180	0+200	0+220	0+240	CHAINAGE

NO.	DATE	BY	ISSUED FOR ZBA APPROVAL		
1	20/08/14	M.S.	ISSUED FOR ZBA APPROVAL		X
REVISIONS					
DESIGN	M.S.	CH'KD	D.A.S.	DATE	
DRAWN	C.C.	CH'KD		2020-07-06	
SCALE					
1:500 HORIZ.			REFERENCES		
1:50 VERT.					
REGIONAL			FIELD NOTES		
SEE COVER SHEET FOR REGIONAL ACCEPTANCE			STAMP		

Arva | R.V. Anderson Associates Limited
engineering • environment • infrastructure



PROPOSED 300mm WATERMAIN AND 200mm SANITARY ON DUNDAS STREET WEST (REG. RD. 5) FROM 130m EAST OF PRUDFOOT TRAIL TO 35m WEST OF FOURTH LINE STA 0+000 TO STA 0+250 IN THE TOWN OF OAKVILLE

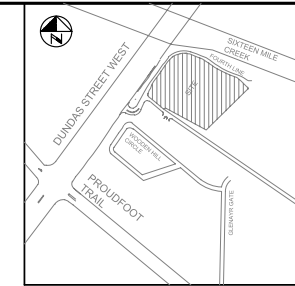
CONSULTANT FILE NO. 195028 REGIONAL DRAWING NO.

CONTRACT NO. X-XXXX-XX DRAWING NO. SHEET PP1 OF PP2

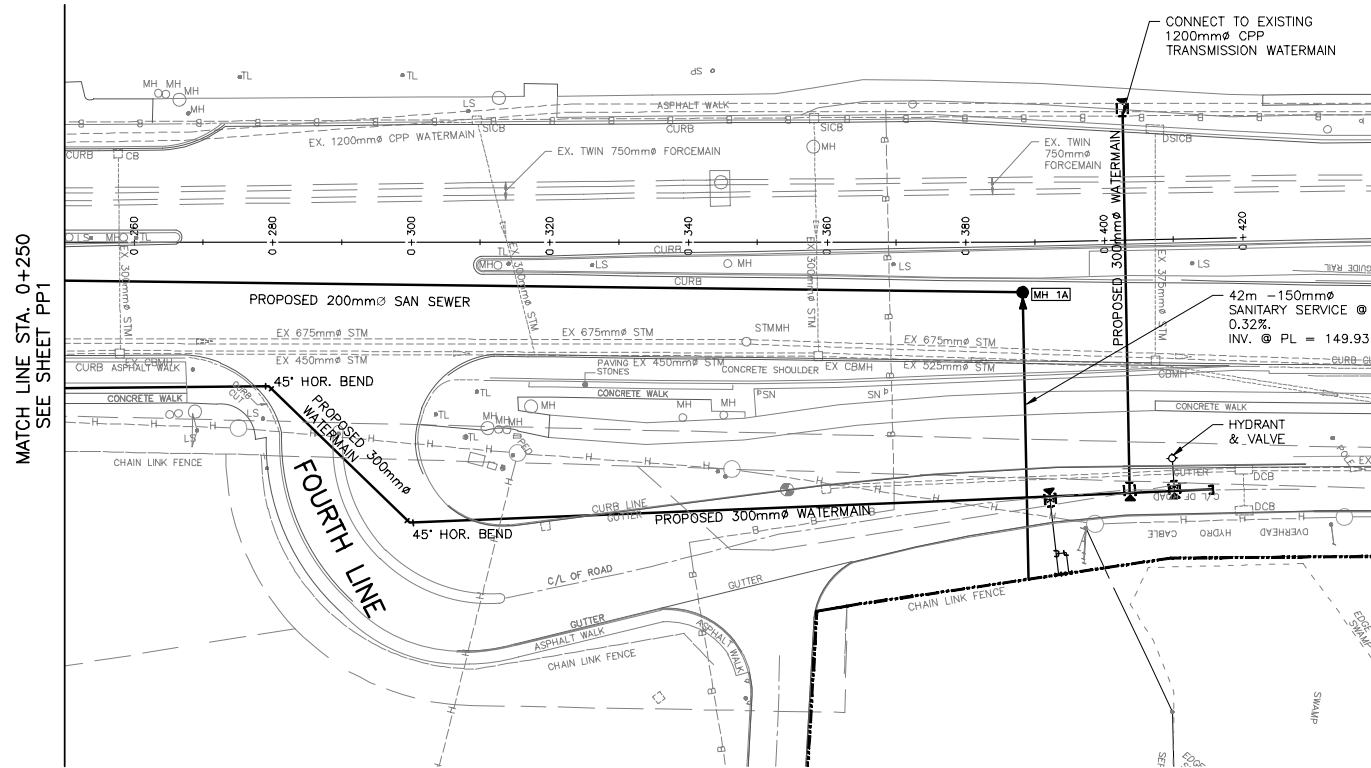
PR-XXXX-XX XX OF XX
D:\Projects\195028 - DELMAROR OAKVILLE Q CAD - URBAN\04 SHEETS\195028-S-PP1.DWG
Lopini, PPT
Date: 08/24/2020 Time: 01:52:49 PM

CONCEPTUAL PLAN AND PROFILE SKETCH

PROPOSED ALIGNMENT OF WATERMAIN AND SANITARY SEWER SHOWN SCHEMATICALLY FOR DISCUSSION PURPOSES TO SUPPORT 1280 DUNDAS STREET WEST ZBA APPLICATION



KEY PLAN
N.T.S.

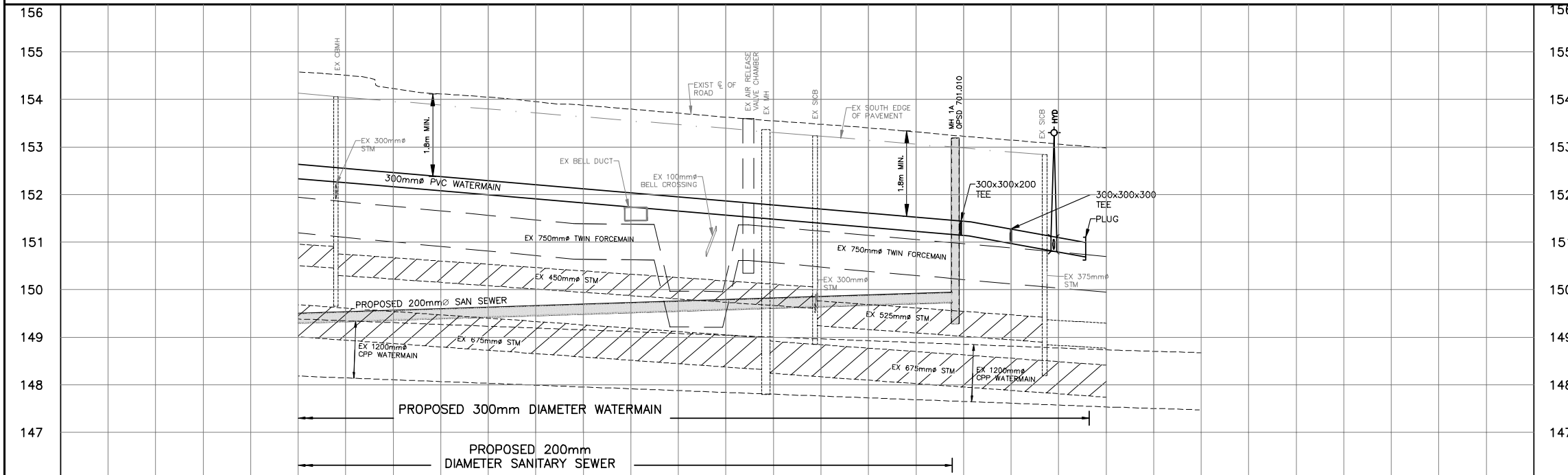


DUNDAS STREET WEST (REG RD 5)

LEGEND

- LS EX LIGHT STANDARD
- MH EX MANHOLE
- SICB EX DOUBLE SIDE INLET CATCHBASIN
- CB EX SIDE INLET CATCHBASIN
- CB EX CATCHBASIN
- EX STORM SEWER
- EX SANITARY FORCEMAIN
- EX WATER
- B EX BELL CANADA CONDUIT
- H EX HYDRO CABLE
- G EX GAS MAIN
- PLUG
- PROP WATERMAIN
- PROP SANITARY SEWER
- PROP MANHOLE
- PROP HYDRANT AND VALVE
- PROP WATERMAIN TEE

THE LOCATION OF UTILITIES IS APPROXIMATE ONLY. THE CONTRACTOR SHALL PROVE THE LOCATION OF UTILITIES AND SHALL BE RESPONSIBLE FOR ADEQUATE PROTECTION FROM DAMAGE



CHAINAGE	ELEVATIONS	PROPOSED 300mm DIAMETER WATERMAIN	PROPOSED 200mm DIAMETER SANITARY SEWER	ELEVATIONS
0+260	154.51 154.508	300mm PVC WATERMAIN	150.0m - 200mm PVC SAN @ 0.32%	154.12 154.116
0+280	153.95 153.952			153.39 153.317
0+300	153.80 153.796	300mm PVC WATERMAIN	150.0m - 200mm PVC SAN @ 0.32%	153.14 153.145
0+320	153.63 153.627			152.98 152.976
0+340	153.48 153.477	300mm PVC WATERMAIN	150.0m - 200mm PVC SAN @ 0.32%	152.82 152.817
0+360	152.67 152.667			152.67 152.667
0+380	152.51 152.507	300mm PVC WATERMAIN	150.0m - 200mm PVC SAN @ 0.32%	152.35 152.347
0+400	152.19 152.187			152.19 152.187
0+420	152.03 152.027	152.03 152.027		152.03 152.027

NO.	DATE	BY	REVISIONS	DATE
1	20/08/14	M.S.	ISSUED FOR ZBA APPROVAL	X
				MANU CAD

DESIGN	M.S.	CH'KD	D.A.S.	DATE
				2020-07-06

SCALE: 1:500 HORIZ. 0 5 10 20; 1:50 VERT. 0 0.5 1 2

REGIONAL FIELD NOTES

SEE COVER SHEET FOR REGIONAL ACCEPTANCE

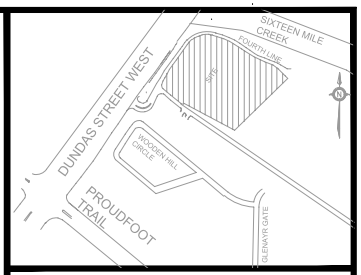
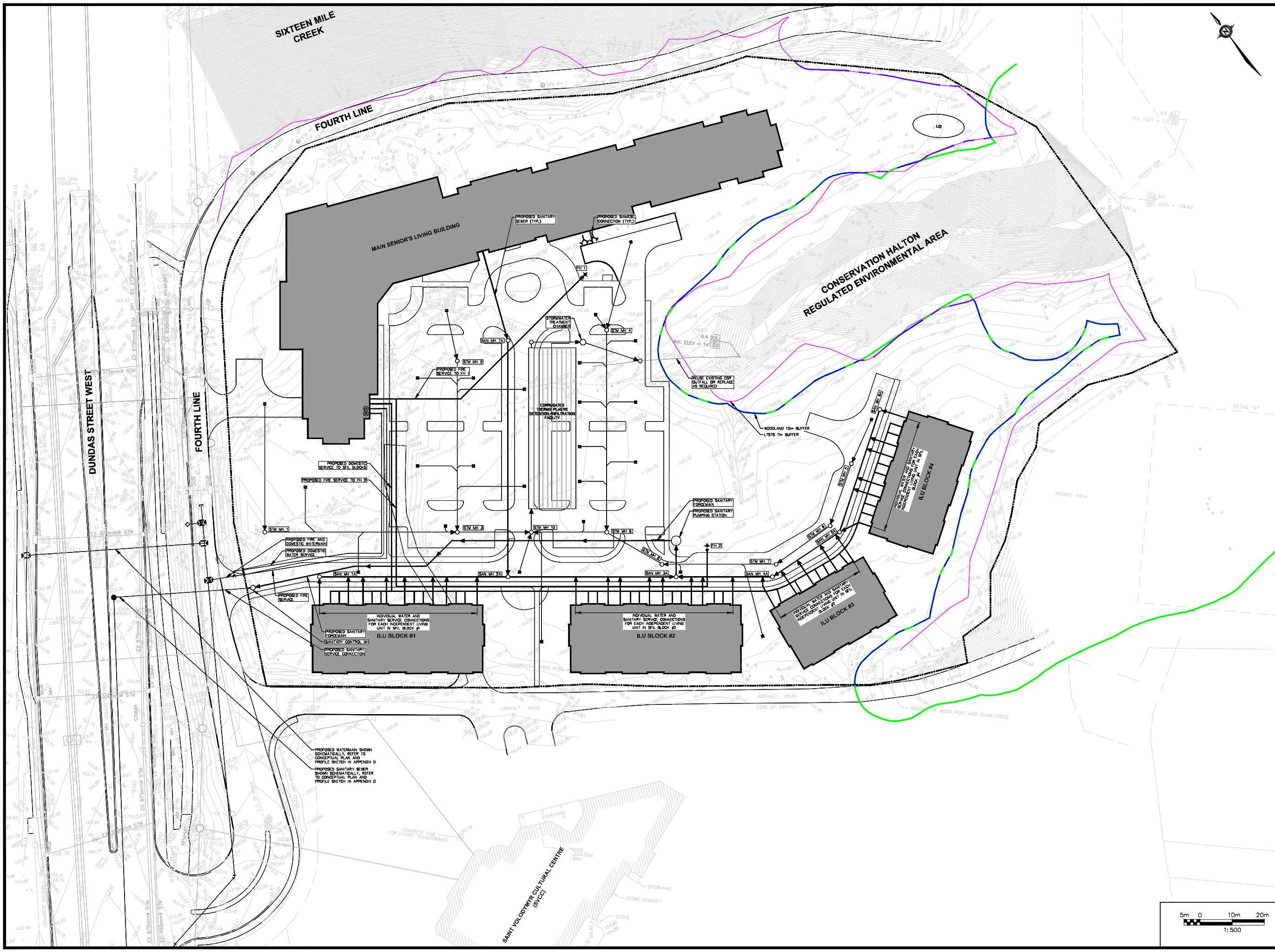
STAMP

Arva R.V. Anderson Associates Limited
engineering • environment • infrastructure



PROPOSED 300mm WATERMAIN AND 200mm SANITARY ON DUNDAS STREET WEST (REG. RD. 5) FROM 35m WEST OF FOURTH LINE TO 65m EAST OF FOURTH LINE STA 0+250 TO STA 0+420 IN THE TOWN OF OAKVILLE	
CONSULTANT FILE NO. 195028	REGIONAL DRAWING NO.
CONTRACT NO. X-XXXX-XX	DRAWING NO. SHEET PP2 OF PP2

PR-XXXX-XX XX OF XX
 Drawn by: 195028 - DELANOR OAKVILLE CAD - URBAN/04 SHEETS/195028-S-PP1.DWG
 Date: 08/24/2020 Time: 01:53:20 PM



KEY PLAN		
N.T.S.		
No.	Date	Comments
1	2020/09/XX	ISSUED FOR ZBA APPROVAL

THIS DRAWING SHALL BE READ IN CONJUNCTION WITH ALL OTHER RVA DRAWINGS

LEGEND	
	PROPERTY LINE
	CATCHBASIN WITH GOSS TRAP
	MH
	SANITARY SEWER AND FORCEMAIN
	WATERMAIN
	STORM SEWER
	VALVE
	SIAMISE CONNECTION
	FIRE HYDRANT
	WATER METER
	DETECTOR ASSEMBLY
	ARCHITECT'S PROPERTY LINE
	LISTS 7m BUFFER LINE
	WOODLAND 10m BUFFER LINE

All Drawings, Specifications And Related Documents Are The Copyright Of The Engineer And Must Be Returned Upon Request.

Reproduction Of Drawings, Specifications And Related Documents In Part Or Whole Is Forbidden Without The Engineers Written Permission.

This Drawing Is Not To Be Used For Construction Until Signed By The Engineer.

NOTE:
THE INFORMATION DENOTED IN BOXES WITHIN THE DRAWING DETAILS ON THIS SHEET ARE CONSIDERED TO BE PROPOSED DESIGN/SPECIFICATIONS. ALL OTHER INFORMATION IS SHOWN FOR CONTEXT ONLY. REFER TO THE APPROPRIATE DRAWINGS BY THE ARCHITECT, LANDSCAPE ARCHITECT, STRUCTURAL ENGINEER, AND MECHANICAL ENGINEER FOR DETAIL DESIGN AND SPECIFICATION OF OTHER DESIGN ELEMENTS.

Drawing Prepared By:



Client:
DELMANOR WEST OAK INC.

Project Name:
1280 DUNDAS STREET WEST REDEVELOPMENT DELMANOR WEST OAK

Drawing Title:
CONCEPTUAL SITE SERVICING FIGURE

Drawn:	M.S.	Design:	D.A.S.	Date:	JULY 2020	
Checked:	D.A.S.	Approved:	A.S.T.	Scale:	1:500	
CADD File:	195028-S-Servicing.dwg				Proj. No.:	C-1
Project No.:	195028					

