

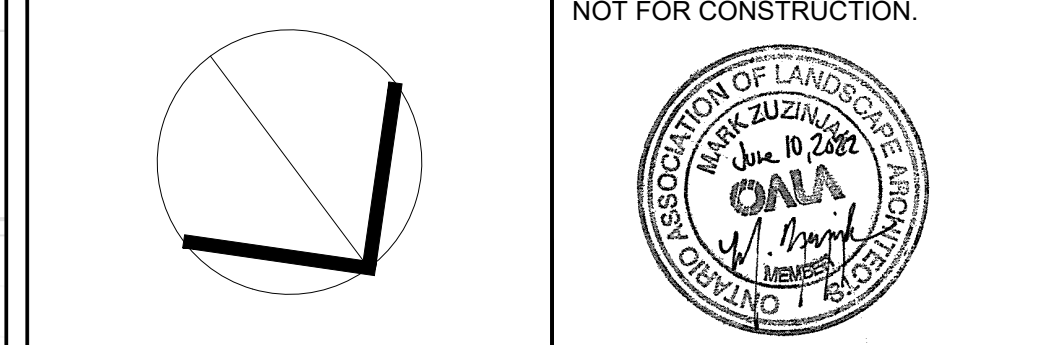
**Legend**

**GENERAL NOTES:**

1. Drawings not to be used for construction unless authorized by the Landscape Architect
2. Contractor shall report any discrepancies between the drawings and site conditions prior to commencement of the work
3. All utility locates are the responsibility of the Contractor. Hand dig within the limits recommended by the service utility. Utility conflicts with proposed tree locations must be reported immediately to the Landscape Architect
4. Sixteen Mile Community Centre & Library base drawing provided by Diamond Schmitt Architects.
5. For Sixteen Mile Community Centre grading information refer to drawing by MTE Consultants.
6. North Park Sports Park base drawings provided by The MBTW Group.
7. Landscape drawings show engineering information for design purposes only. Do not construct engineering works from these drawings.

**LANDSCAPE KEY PLAN**

North Park Development: Community Centre, Library and Sports Park, Oakville, ON



DATE	ISSUE	BY
Nov 2 2021	Preliminary Landscape Schematics	NZ
Feb 4 2022	Issued for Site Plan Application 1	BR
June 10 2022	Issued for Site Plan Application 2	NZ

DATE	REVISIONS	BY
Jan 25 2022	Issued for Coordination	BR
Jan 27 2022	Issued for Coordination	BR
Mar 11 2022	Issued for Coordination	NZ
May 27 2022	Issued for Coordination	NZ

21500 Steeles Ave. East, Suite 201  
Markham, Ontario L3R 0Y7  
1-888-888-8888

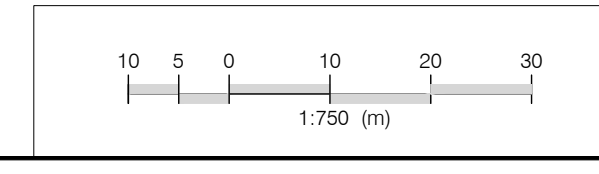
1000 Steeles Ave. East, Suite 201  
Markham, Ontario L3R 0Y7  
1-888-888-8888

www.gspgroup.ca

Date: June 2022  
Scale: 1:750 @ 36x48

Drawn By: NZ, BR  
Project No.: 21337

00.07



**NORTH PARK SPORTS PARK  
REFER TO LANDSCAPE  
DRAWINGS BY MBTW**

**NORTH PARK SPORTS PARK  
REFER TO LANDSCAPE  
DRAWINGS BY MBTW**

**SIXTEEN MILE COMMUNITY  
CENTRE AND LIBRARY  
AREA B**

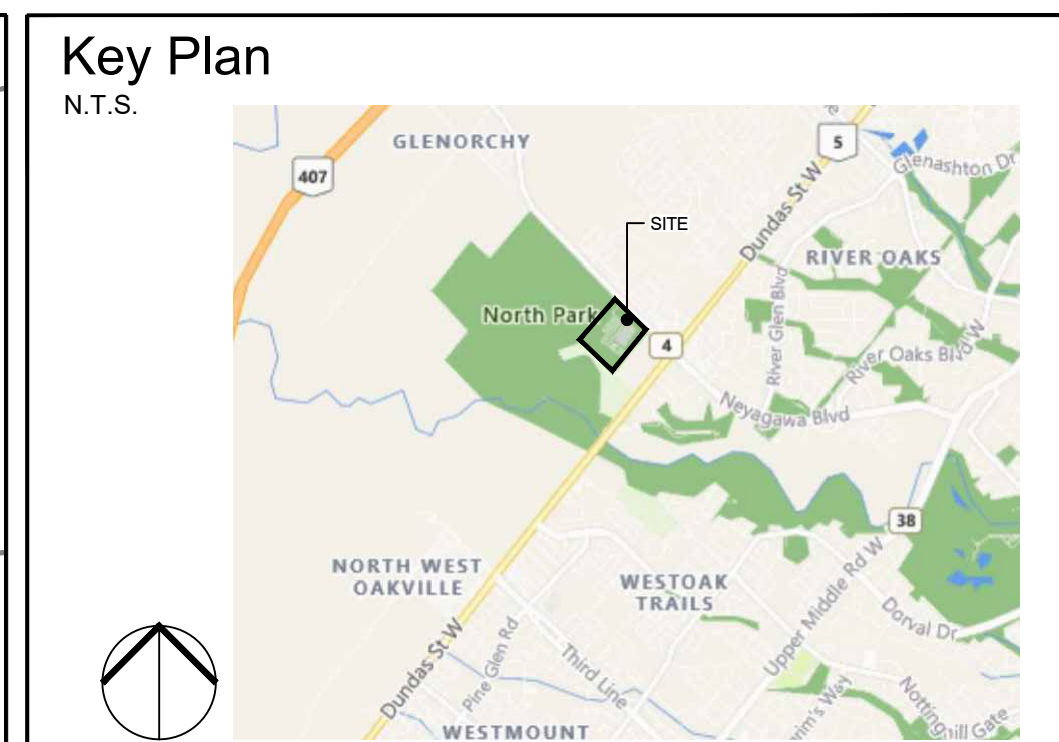
**SIXTEEN MILE COMMUNITY  
CENTRE AND LIBRARY  
AREA A**

SIXTEEN MILE DRIVE

SIXTEEN MILE DRIVE

GARDENBROOK AVE

NEYAGAWA BLVD.

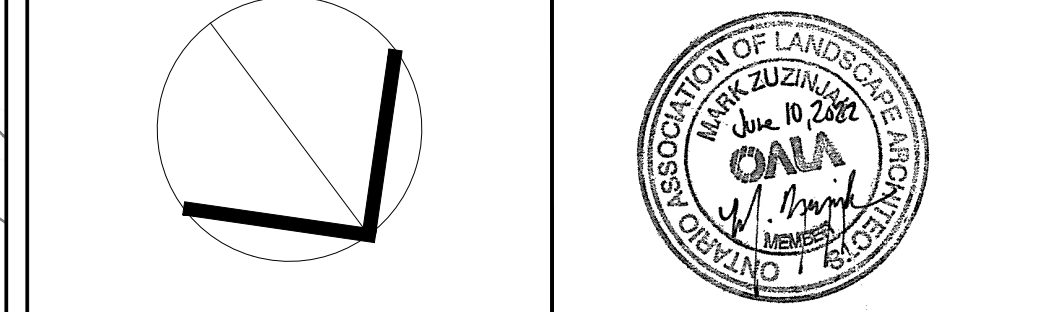


- ### Legend
- PROPERTY LINE
  - LIMIT OF WORK
  - EXISTING TREES
  - PROPOSED TREES
  - SHRUB PLANTING
  - ORNAMENTAL GRASS PLANTING
  - SOD (TYPE 1)
  - SOD (TYPE 2)
  - UPLAND SEED MIX
  - LOW LYING SEED MIX
  - THRESHOLD PAVING
  - CONCRETE PAVING W/ BROOM FINISH
  - PLAZA PAVING (TYPE 1)
  - PLAZA PAVING (TYPE 2)
  - PLAZA PAVING (TYPE 3)
  - BENCH (TYPE 1)
  - BENCH (TYPE 2)
  - BENCH (TYPE 3)
  - BENCH (TYPE 4)
  - BENCH (TYPE 5)
  - BIKE RACK
  - COMBINED WASTE RECEPTACLE
  - TABLE & UMBRELLA
  - BICYCLE REPAIR STATION
  - BOLLARD
  - LIGHT STANDARDS (REFER TO ELECTRICAL)

- ### REFERENCE NOTES
- Refer to traffic consultant drawings for all lane crossings and accessible parking aisle treatments.
  - Grading and servicing shown for reference only. Refer to grading, servicing, curbs and curb-ramp information.
  - Lighting for reference only. Refer to electrical drawings for detailed lighting information.
- ### GENERAL NOTES:
- Drawings not to be used for construction unless authorized by the Landscape Architect.
  - Contractor shall report any discrepancies between the drawings and site conditions prior to commencement of work.
  - All utility locates are the responsibility of the Contractor. Hand dig within the limits recommended by the service utility. Utility conflicts with proposed tree locations must be reported immediately to the Landscape Architect.
  - Sixteen Mile Community Centre & Library drawing provided by Diamond Schmitt Architects.
  - For Sixteen Mile Community Centre grading information refer to drawing by MTE Consultants.
  - North Park Sports Park base drawings provided by The MBTW Group.
  - Landscape drawings show engineering information for design purposes only. Do not construct engineering works from these drawings.

## LANDSCAPE SITE PLAN AREA A

North Park Development: Community Centre, Library and Sports Park, Oakville, ON



DATE	ISSUE	BY
June 10 2022	Issued for Site Plan Application 2	NZ

DATE	REVISIONS	BY
Jan 25 2022	Issued for Coordination	ER
Jan 27 2022	Issued for Coordination	ER
May 2 2022	Issued for Coordination	NZ

12000 Steeles Ave. East, Suite 101  
Markham, Ontario L3R 9V7  
1-877-477-7777  
www.gsgroup.ca

Issued for Site Plan Approval  
NOT FOR CONSTRUCTION

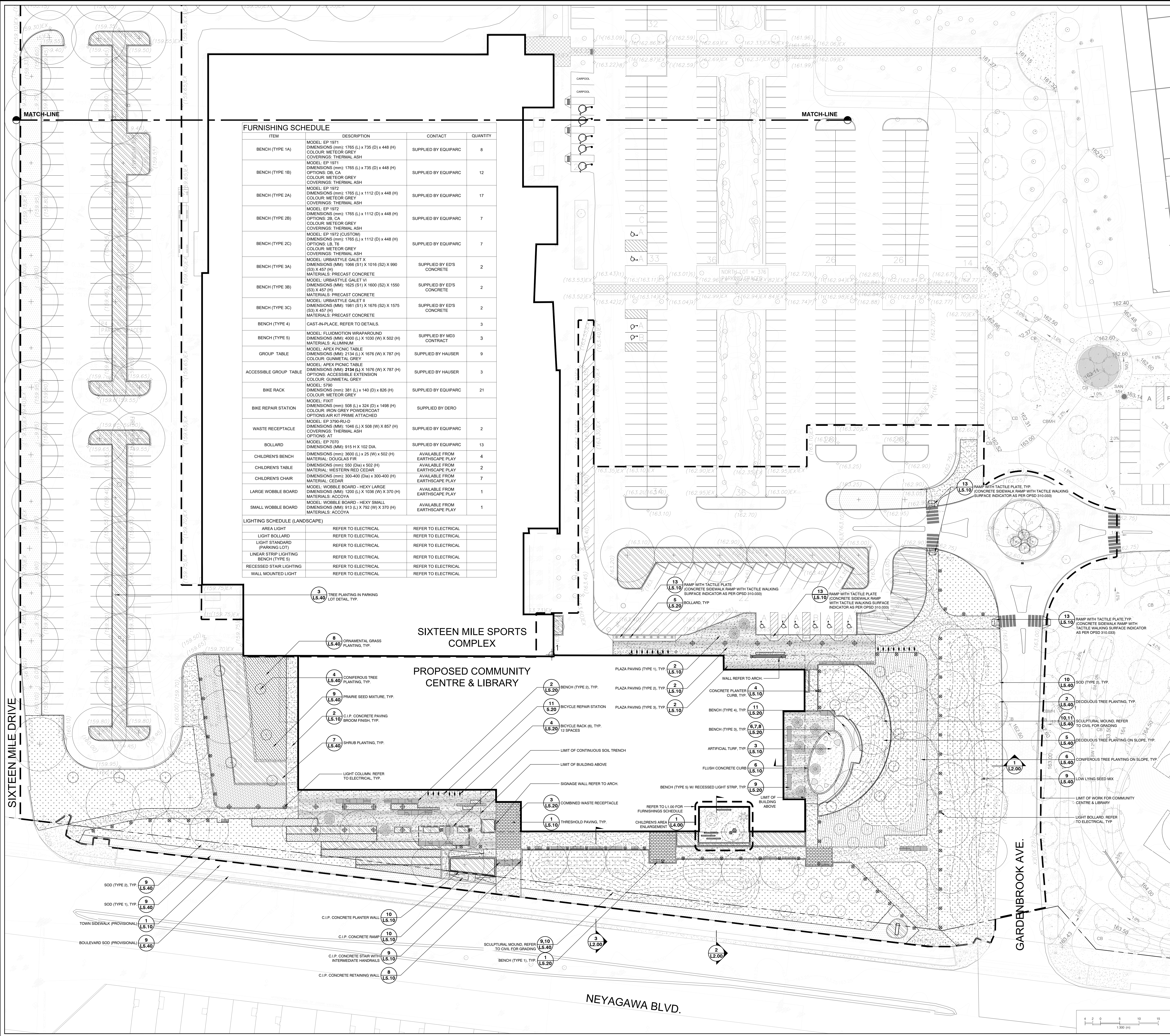
DATE: June 2022  
Scale: 1:300 @ 35x48  
Drawn By: NZ, BR  
Project No.: 21337

### FURNISHING SCHEDULE

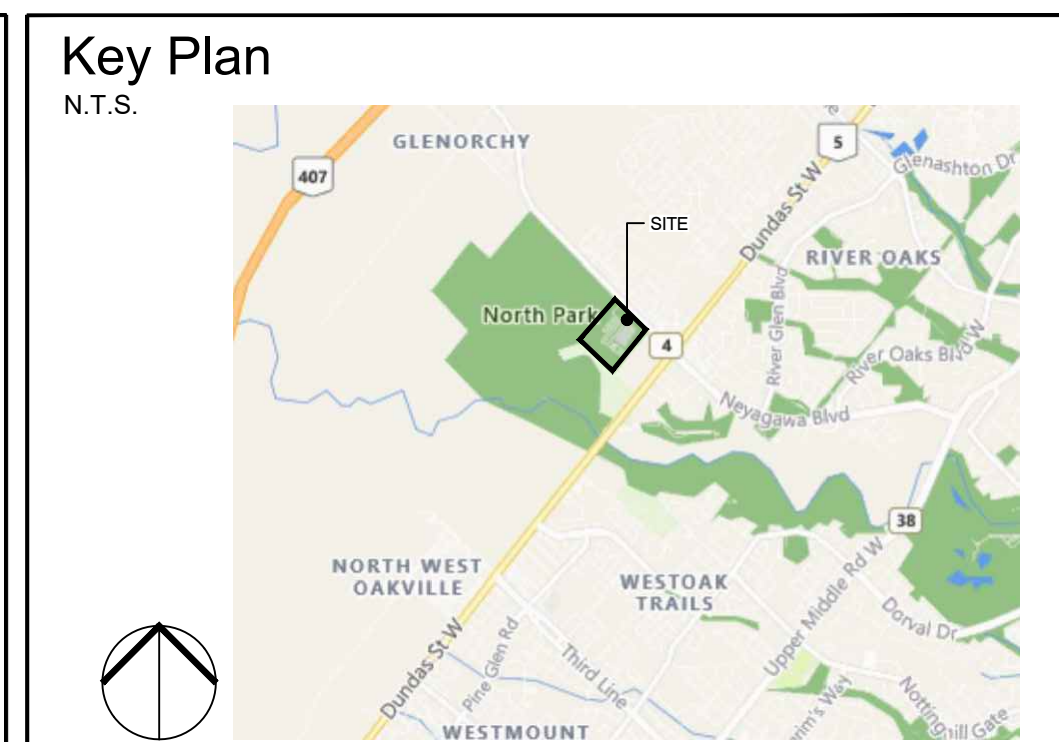
ITEM	DESCRIPTION	CONTACT	QUANTITY
BENCH (TYPE 1A)	MODEL: EP 1971 DIMENSIONS (mm): 1765 (L) x 735 (D) x 448 (H) COLOUR: METEOR GREY COVERINGS: THERMAL ASH	SUPPLIED BY EQUIPARC	8
BENCH (TYPE 1B)	MODEL: EP 1971 DIMENSIONS (mm): 1765 (L) x 735 (D) x 448 (H) OPTIONS: DS, CA COLOUR: METEOR GREY COVERINGS: THERMAL ASH	SUPPLIED BY EQUIPARC	12
BENCH (TYPE 2A)	MODEL: EP 1972 DIMENSIONS (mm): 1765 (L) x 1112 (D) x 448 (H) COLOUR: METEOR GREY COVERINGS: THERMAL ASH	SUPPLIED BY EQUIPARC	17
BENCH (TYPE 2B)	MODEL: EP 1972 DIMENSIONS (mm): 1765 (L) x 1112 (D) x 448 (H) OPTIONS: 2B, CA COLOUR: METEOR GREY COVERINGS: THERMAL ASH	SUPPLIED BY EQUIPARC	7
BENCH (TYPE 2C)	MODEL: EP 1972 (CUSTOM) DIMENSIONS (mm): 1765 (L) x 1112 (D) x 448 (H) COLOUR: METEOR GREY COVERINGS: THERMAL ASH	SUPPLIED BY EQUIPARC	7
BENCH (TYPE 3A)	MODEL: EP 1972 (CUSTOM) DIMENSIONS (mm): 1066 (S1) x 1016 (S2) x 990 (S3) x 457 (H) MATERIALS: PRECAST CONCRETE	SUPPLIED BY ED'S CONCRETE	2
BENCH (TYPE 3B)	MODEL: URBANSTYLE GALET VI DIMENSIONS (mm): 1625 (S1) x 1600 (S2) x 1550 (S3) x 457 (H) MATERIALS: PRECAST CONCRETE	SUPPLIED BY ED'S CONCRETE	2
BENCH (TYPE 3C)	MODEL: URBANSTYLE GALET II DIMENSIONS (mm): 1981 (S1) x 1676 (S2) x 1575 (S3) x 457 (H) MATERIALS: PRECAST CONCRETE	SUPPLIED BY ED'S CONCRETE	2
BENCH (TYPE 4)	CAST-IN-PLACE. REFER TO DETAILS.		3
BENCH (TYPE 5)	MODEL: FLUIDMOTION WRAPAROUND DIMENSIONS (mm): 4000 (L) x 1030 (W) x 502 (H) MATERIALS: ALUMINUM	SUPPLIED BY MD3 CONTRACT	3
GROUP TABLE	MODEL: APEX PICNIC TABLE DIMENSIONS (mm): 2154 (L) x 1676 (W) x 787 (H) COLOUR: GUNMETAL GREY	SUPPLIED BY HAUSER	9
ACCESSIBLE GROUP TABLE	MODEL: APEX PICNIC TABLE DIMENSIONS (mm): 2154 (L) x 1676 (W) x 787 (H) OPTIONS: ACCESSIBLE EXTENSION COLOUR: GUNMETAL GREY	SUPPLIED BY HAUSER	3
BIKE RACK	MODEL: 3790 DIMENSIONS (mm): 381 (L) x 140 (D) x 826 (H) COLOUR: METEOR GREY	SUPPLIED BY EQUIPARC	21
BIKE REPAIR STATION	MODEL: FIXIT DIMENSIONS (mm): 508 (L) x 334 (D) x 1498 (H) COLOUR: IRON GREY POWDERCOAT OPTIONS: AIR KIT PRIME ATTACHED	SUPPLIED BY DERO	1
WASTE RECEPTACLE	MODEL: EP 3790-RJ-D DIMENSIONS (mm): 1048 (L) x 508 (W) x 857 (H) COVERINGS: THERMAL ASH OPTIONS: AT	SUPPLIED BY EQUIPARC	2
BOLLARD	MODEL: EP 7070 DIMENSIONS (mm): 915 H x 102 DIA.	SUPPLIED BY EQUIPARC	13
CHILDREN'S BENCH	DIMENSIONS (mm): 3600 L x 25 (W) x 502 (H) MATERIAL: DOUGLAS FIR	AVAILABLE FROM EARTHSCAPE PLAY	4
CHILDREN'S TABLE	DIMENSIONS (mm): 550 (Dia) x 502 (H) MATERIAL: WESTERN RED CEDAR	AVAILABLE FROM EARTHSCAPE PLAY	2
CHILDREN'S CHAIR	DIMENSIONS (mm): 300-400 (Dia) x 300-400 (H) MATERIAL: CEDAR	AVAILABLE FROM EARTHSCAPE PLAY	7
LARGE WOBBLE BOARD	MODEL: WOBBLE BOARD - HEXY LARGE DIMENSIONS (mm): 1200 (L) x 1036 (W) x 370 (H) MATERIALS: ACCOYA	AVAILABLE FROM EARTHSCAPE PLAY	1
SMALL WOBBLE BOARD	MODEL: WOBBLE BOARD - HEXY SMALL DIMENSIONS (mm): 913 (L) x 792 (W) x 370 (H) MATERIALS: ACCOYA	AVAILABLE FROM EARTHSCAPE PLAY	1

### LIGHTING SCHEDULE (LANDSCAPE)

AREA LIGHT	REFER TO ELECTRICAL	REFER TO ELECTRICAL
LIGHT BOLLARD	REFER TO ELECTRICAL	REFER TO ELECTRICAL
LIGHT STANDARD (PARKING LOT)	REFER TO ELECTRICAL	REFER TO ELECTRICAL
LINEAR STRIP LIGHTING	REFER TO ELECTRICAL	REFER TO ELECTRICAL
BENCH (TYPE 1)	REFER TO ELECTRICAL	REFER TO ELECTRICAL
RECESSED STAIR LIGHTING	REFER TO ELECTRICAL	REFER TO ELECTRICAL
WALL MOUNTED LIGHT	REFER TO ELECTRICAL	REFER TO ELECTRICAL



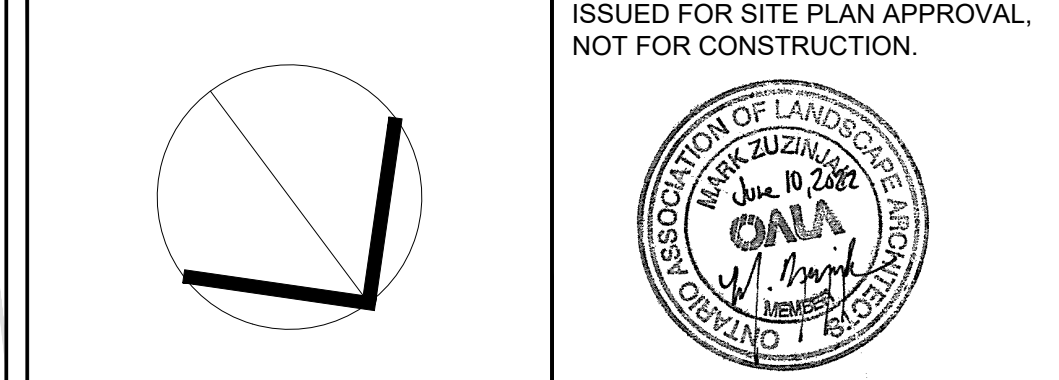
L1.00



- Legend**
- PROPERTY LINE
  - - - LIMIT OF WORK
  - ○ ○ EXISTING TREES
  - ○ ○ PROPOSED TREES
  - ▨ SHRUB PLANTING
  - ▨ ORNAMENTAL GRASS PLANTING
  - ▨ SOD (TYPE 1)
  - ▨ SOD (TYPE 2)
  - ▨ UPLAND SEED MIX
  - ▨ LOW LYING SEED MIX
  - ▨ THRESHOLD PAVING
  - ▨ CONCRETE PAVING W/ BROOM FINISH
  - ▨ PLAZA PAVING (TYPE 1)
  - ▨ PLAZA PAVING (TYPE 2)
  - ▨ PLAZA PAVING (TYPE 3)
  - ▨ BENCH (TYPE 1)
  - ▨ BENCH (TYPE 2)
  - ▨ BENCH (TYPE 3)
  - ▨ BENCH (TYPE 4)
  - ▨ BENCH (TYPE 5)
  - ⊕ BIKE RACK
  - ⊕ COMBINED WASTE RECEPTACLE
  - ⊕ TABLE & UMBRELLA
  - ⊕ BICYCLE REPAIR STATION
  - ⊕ BOLLARD
  - ⊕ LIGHT STANDARDS (REFER TO ELECTRICAL)

- GENERAL NOTES:**
1. Drawings not to be used for construction unless authorized by the Landscape Architect.
  2. Contractor shall report any discrepancies between the drawings and site conditions prior to commencement of the work.
  3. All utility locates are the responsibility of the Contractor. Hand dig within the limits recommended by the service utility. Utility conflicts with proposed tree locations must be reported immediately to the Landscape Architect.
  4. Sixteen Mile Community Centre & Library base drawing provided by Diamond Schmitt Architects.
  5. For Sixteen Mile Community Centre grading information refer to drawing by MTE Consultants.
  6. North Park Sports Park base drawings provided by The MBTW Group.
  7. Landscape drawings show engineering information for design purposes only. Do not construct engineering works from these drawings.

**LANDSCAPE SITE PLAN  
AREA B**  
North Park Development: Community Centre,  
Library and Sports Park, Oakville, ON



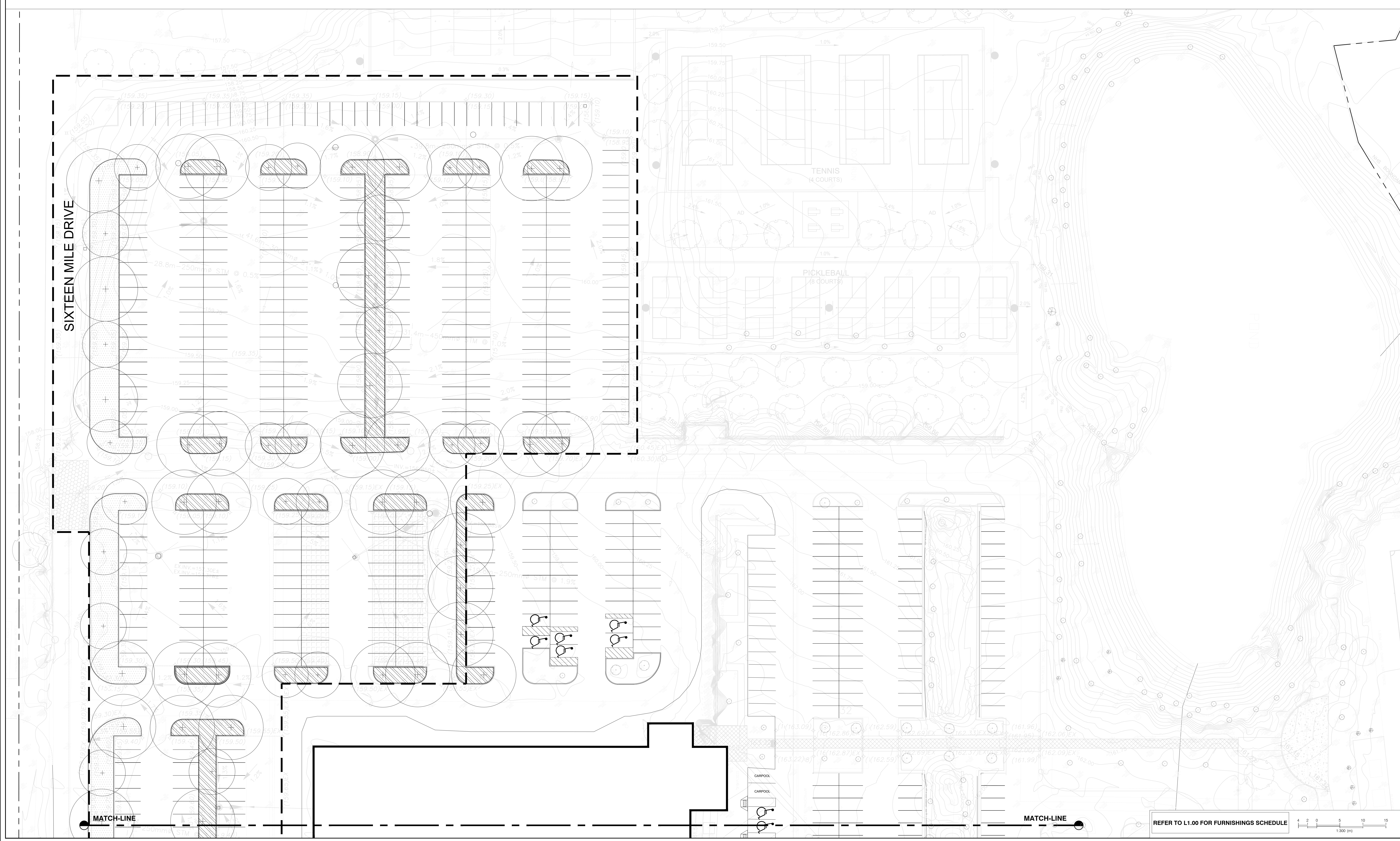
DATE	ISSUE	BY
March 9, 2022	Issued for Site Plan Approval	BT
June 10, 2022	Issued for Site Plan Application 2	AZ

DATE	REVISIONS	BY
May 2, 2022	Issued for Construction	AZ

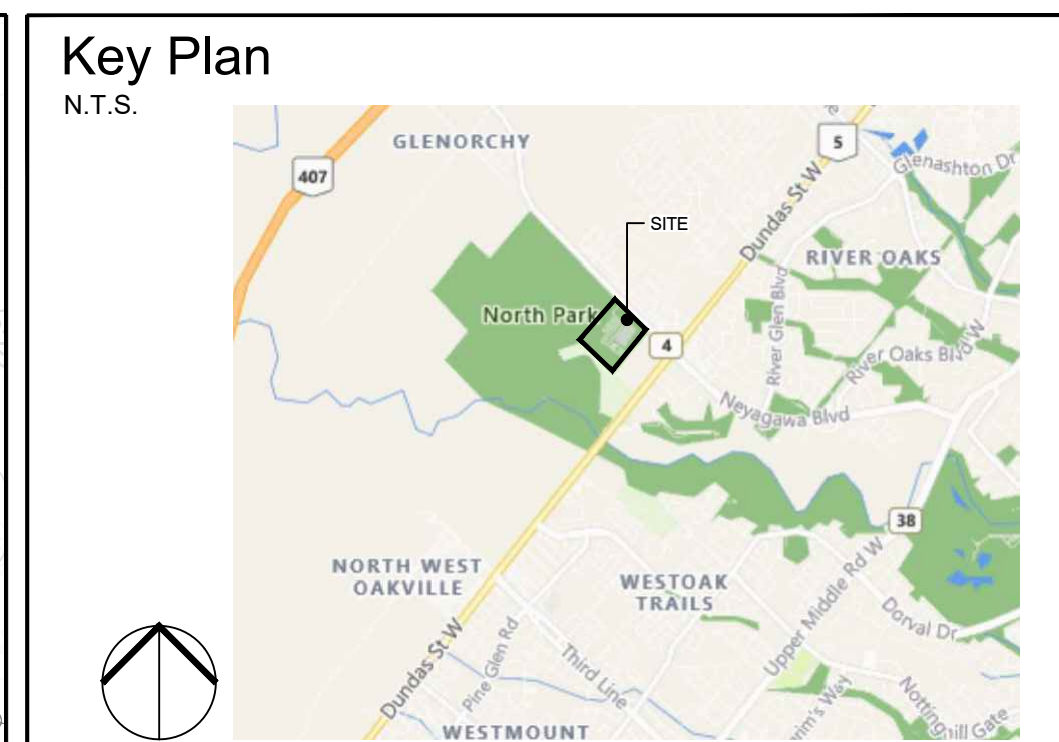
**GSP group**  
2500 Sheppard Ave. East, Suite 201  
Markham, Ontario L3R 9V8  
Tel: 905.477.1111  
www.gspgroup.ca

ISSUED FOR SITE PLAN APPROVAL,  
NOT FOR CONSTRUCTION.

DATE: June 2022  
Scale: 1:300 @ 35x48  
Drawn By: AZ, BT  
Project No: 21337



**L1.01**

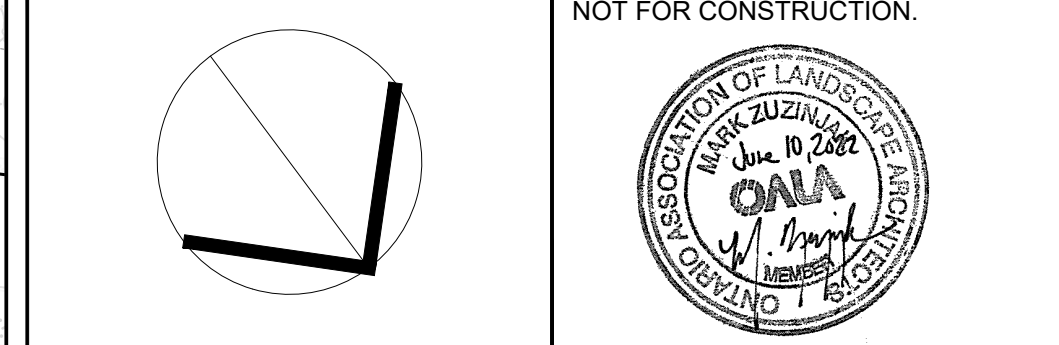


- ### Legend
- PROPERTY LINE
  - - - LIMIT OF WORK
  - EXISTING TREES
  - PROPOSED TREES
  - ▨ SHRUB PLANTING
  - ▨ ORNAMENTAL GRASS PLANTING
  - ▨ SOD (TYPE 1)
  - ▨ SOD (TYPE 2)
  - ▨ UPLAND SEED MIX
  - ▨ LOW LYING SEED MIX
  - ▨ THRESHOLD PAVING
  - ▨ CONCRETE PAVING W/ BROOM FINISH
  - ▨ PLAZA PAVING (TYPE 1)
  - ▨ PLAZA PAVING (TYPE 2)
  - ▨ PLAZA PAVING (TYPE 3)
  - ▨ BENCH (TYPE 1)
  - ▨ BENCH (TYPE 2)
  - ▨ BENCH (TYPE 3)
  - ▨ BENCH (TYPE 4)
  - ▨ BENCH (TYPE 5)
  - ⊞ BIKE RACK
  - ⊞ COMBINED WASTE RECEPTACLE
  - ⊞ TABLE & UMBRELLA
  - ⊞ BICYCLE REPAIR STATION
  - ⊞ BOLLARD
  - ⊞ LIGHT STANDARDS (REFER TO ELECTRICAL)

- ### GENERAL NOTES:
1. Drawings not to be used for construction unless authorized by the Landscape Architect.
  2. Contractor shall report any discrepancies between the drawings and site conditions prior to commencement of the work.
  3. All utility locations are the responsibility of the Contractor. Hand dig within the limits recommended by the service utility. Utility conflicts with proposed tree locations must be reported immediately to the Landscape Architect.
  4. Sixteen Mile Community Centre & Library base drawing provided by Diamond Schmitt Architects.
  5. For Sixteen Mile Community Centre grading information refer to drawing by MTE Consultants.
  6. North Park Sports Park base drawings provided by The MBTW Group.
  7. Landscape drawings show engineering information for design purposes only. Do not construct engineering works from these drawings.

## STREETSCAPE PLAN AREA A

North Park Development: Community Centre,  
Library and Sports Park, Oakville, ON



DATE	ISSUE	BY
March 9, 2022	Issued for Site Plan Approval	BT
June 10, 2022	Issued for Site Plan Application 2	AZ

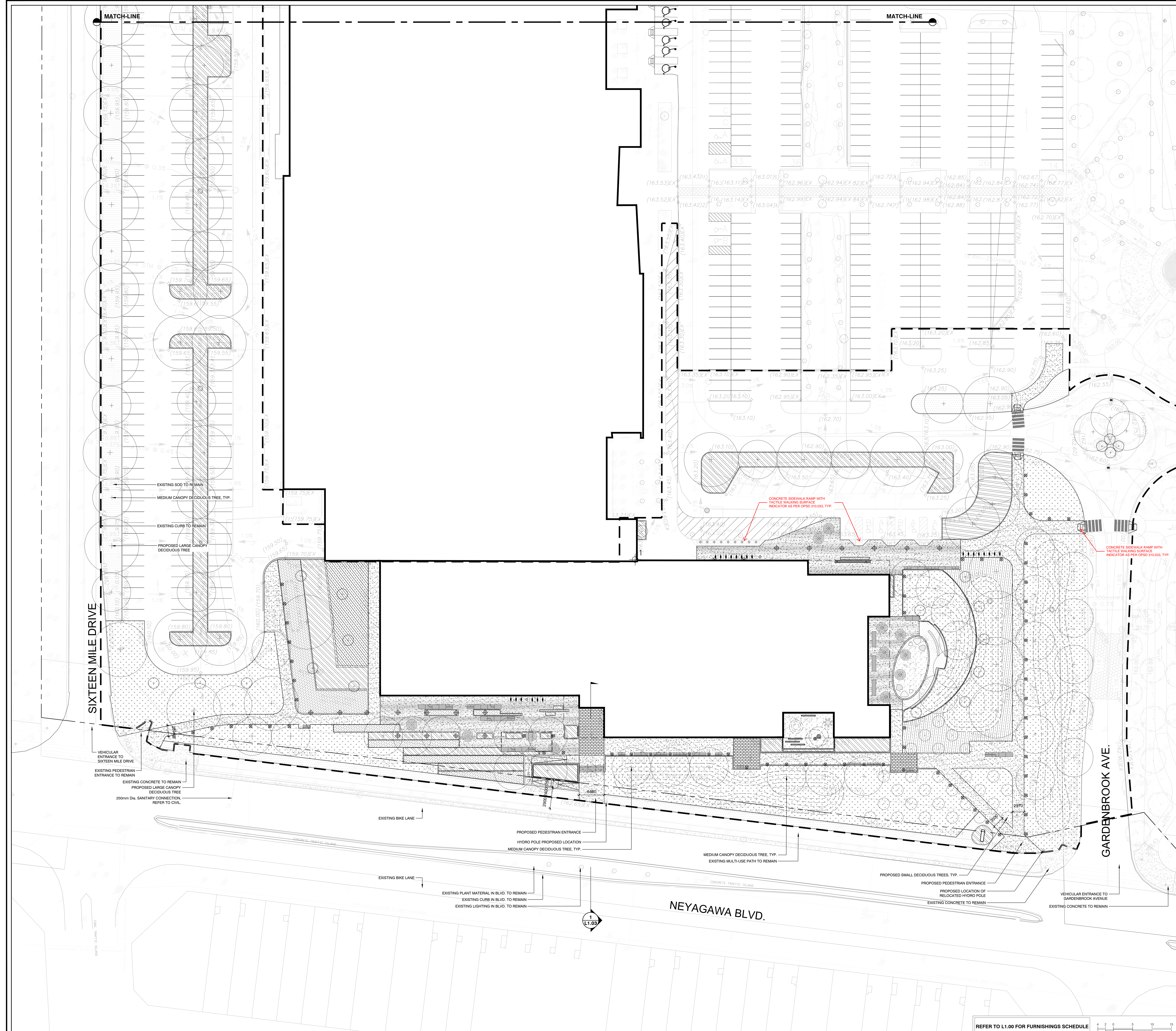
  

DATE	REVISIONS	BY
May 2, 2022	Issued for Construction	AZ

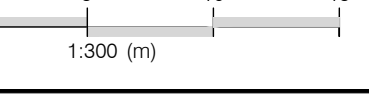
1600 Steeles East, Suite 201  
Markham, Ontario L3R 9V7  
1-888-888-8888  
www.gspgroup.ca

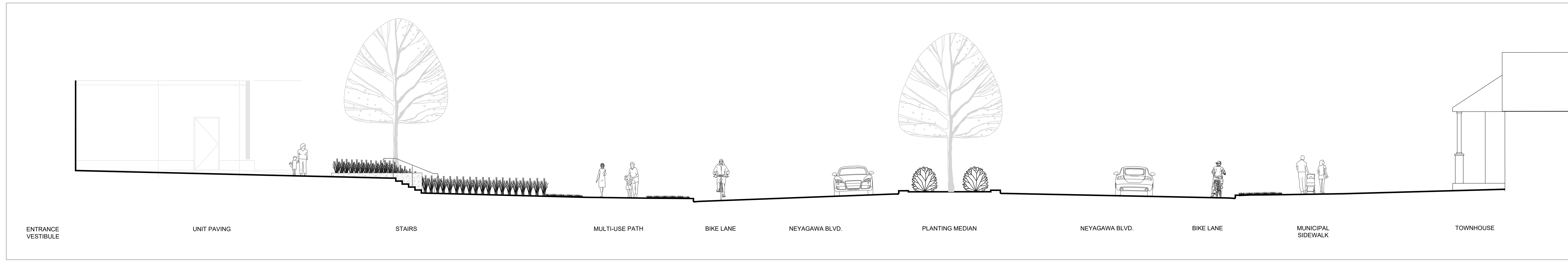
Date: June 2022  
Scale: 1:300 @ 35x48  
Project No: 21337

L1.02

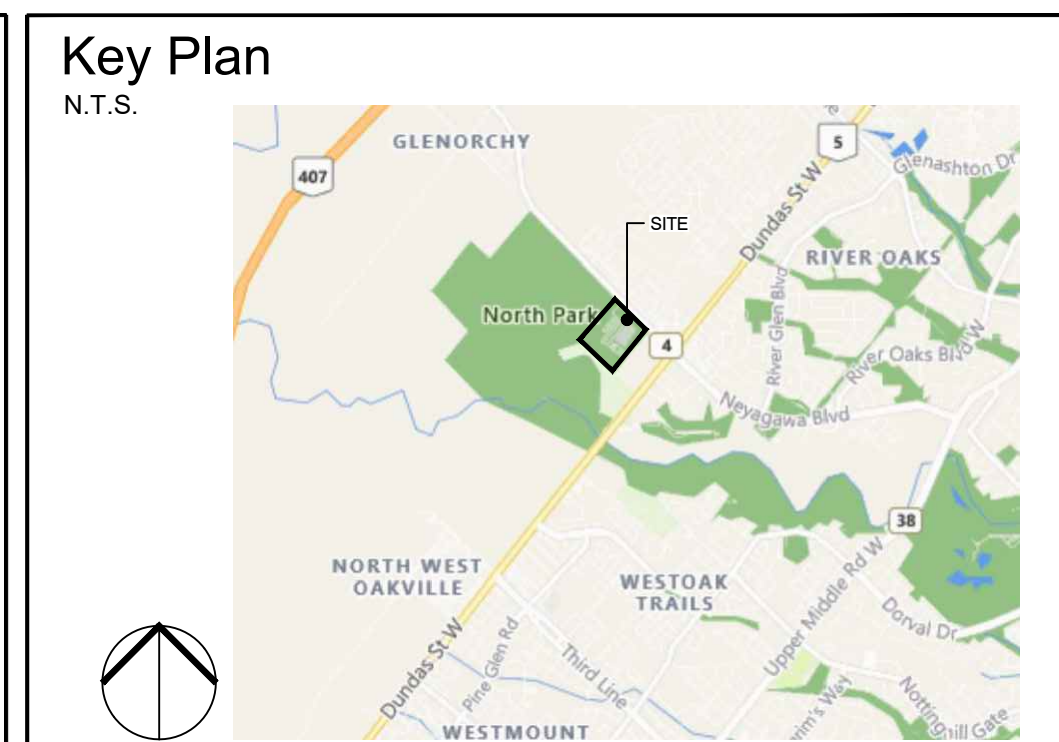


REFER TO L1.00 FOR FURNISHINGS SCHEDULE

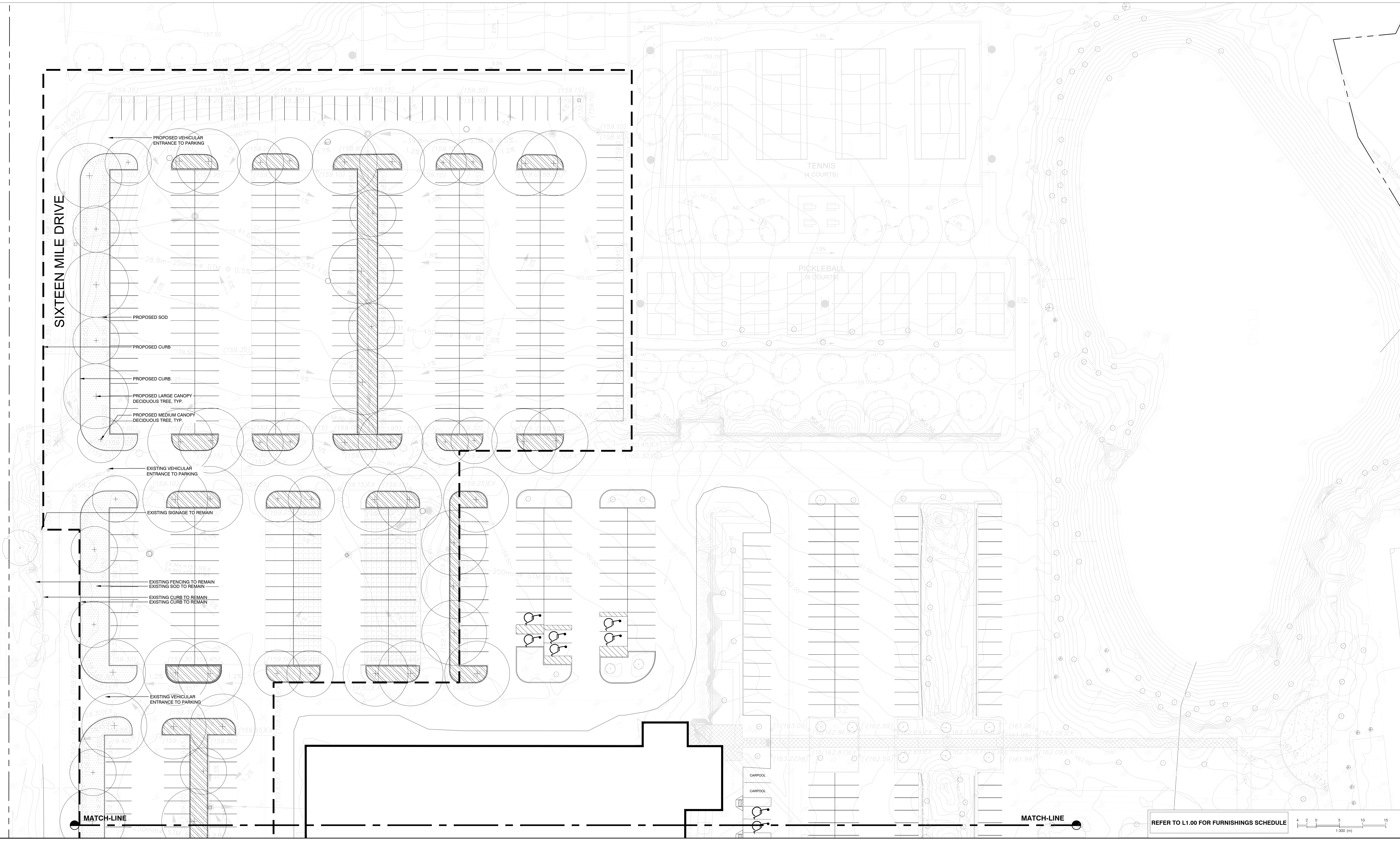




1 NEYAGAWA STREETSCAPE SECTION

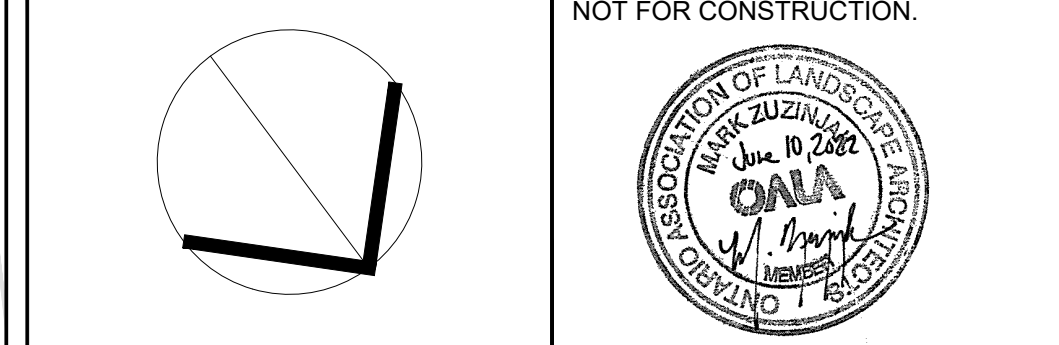


- Legend**
- PROPERTY LINE
  - - - LIMIT OF WORK
  - EXISTING TREES
  - PROPOSED TREES
  - ▨ SHRUB PLANTING
  - ▨ ORNAMENTAL GRASS PLANTING
  - ▨ SOD (TYPE 1)
  - ▨ SOD (TYPE 2)
  - ▨ UPLAND SEED MIX
  - ▨ LOW LYING SEED MIX
  - ▨ THRESHOLD PAVING
  - ▨ CONCRETE PAVING W/ BROOM FINISH
  - ▨ PLAZA PAVING (TYPE 1)
  - ▨ PLAZA PAVING (TYPE 2)
  - ▨ PLAZA PAVING (TYPE 3)
  - ▨ BENCH (TYPE 1)
  - ▨ BENCH (TYPE 2)
  - ▨ BENCH (TYPE 3)
  - ▨ BENCH (TYPE 4)
  - ▨ BENCH (TYPE 5)
  - ⊠ BIKE RACK
  - ⊠ COMBINED WASTE RECEPTACLE
  - ⊠ TABLE & UMBRELLA
  - ⊠ BICYCLE REPAIR STATION
  - ⊠ BOLLARD
  - ⊠ LIGHT STANDARDS (REFER TO ELECTRICAL)



- GENERAL NOTES:**
1. Drawings not to be used for construction unless authorized by the Landscape Architect.
  2. Contractor shall report any discrepancies between the drawings and site conditions prior to commencement of the work.
  3. All utility locations are the responsibility of the Contractor. Hand dig within the limits recommended by the service utility. Utility conflicts with proposed tree locations must be reported immediately to the Landscape Architect.
  4. Sixteen Mile Community Centre & Library base drawing provided by Diamond Schmitt Architects.
  5. For Sixteen Mile Community Centre grading information refer to drawing by MTE Consultants.
  6. North Park Sports Park base drawings provided by The MTE Group.
  7. Landscape drawings show engineering information for design purposes only. Do not construct engineering works from these drawings.

**STREETSCAPE PLAN  
AREA B**  
North Park Development: Community Centre,  
Library and Sports Park, Oakville, ON



DATE	ISSUE	BY
March 9, 2022	Issued for Site Plan Approval	BT
June 10, 2022	Issued for Site Plan Application 2	AZ

DATE	REVISIONS	BY
May 2, 2022	Issued for Coordination	AZ

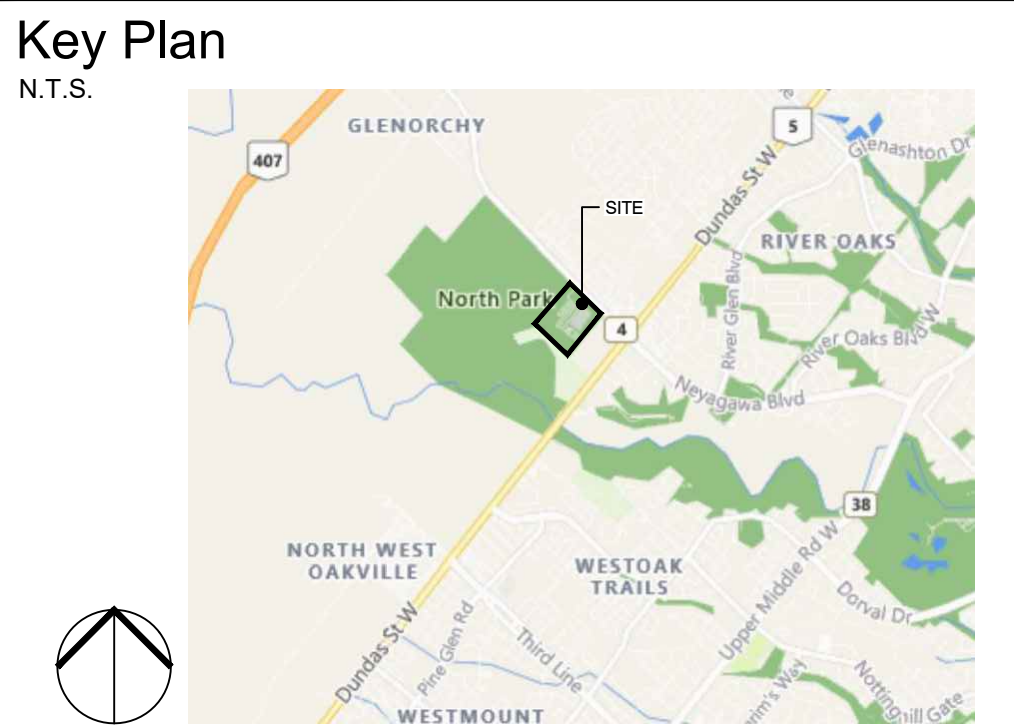
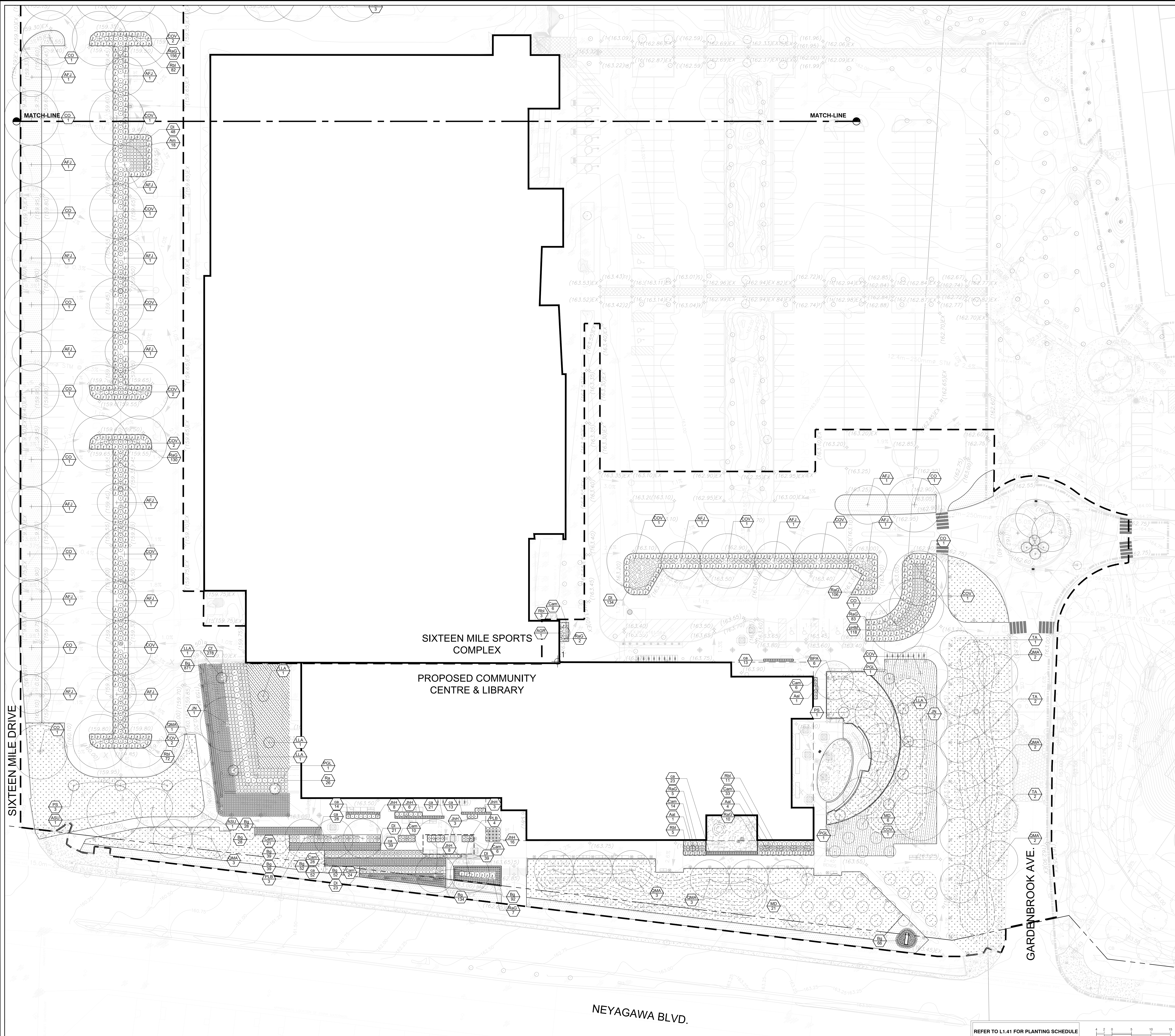
**GSP group**  
25 Stone Street, Suite 201  
Oakville, Ontario L6M 3H8  
1-888-888-8888  
www.gspgroup.ca

1200 Stone Street, Suite 201  
Oakville, Ontario L6M 3H8  
1-888-888-8888  
www.gspgroup.ca

Date: June 2022  
Scale: 1:300 @ 35x48  
Project No: 21337

ISSUED FOR SITE PLAN APPROVAL,  
NOT FOR CONSTRUCTION.

**L1.03**



- ### Legend
- PROPERTY LINE
  - - - LIMIT OF WORK
  - EXISTING TREES
  - PROPOSED TREES
  - ▨ SHRUB PLANTING
  - ▨ ORNAMENTAL GRASS PLANTING
  - ▨ SOD (TYPE 1)
  - ▨ SOD (TYPE 2)
  - ▨ UPLAND SEED MIX
  - ▨ LOW LYING SEED MIX
  - ▨ THRESHOLD PAVING
  - ▨ CONCRETE PAVING W/ BROOM FINISH
  - ▨ PLAZA PAVING (TYPE 1)
  - ▨ PLAZA PAVING (TYPE 2)
  - ▨ PLAZA PAVING (TYPE 3)
  - ▨ BENCH (TYPE 1)
  - ▨ BENCH (TYPE 2)
  - ▨ BENCH (TYPE 3)
  - ▨ BENCH (TYPE 4)
  - ▨ BENCH (TYPE 5)
  - ⊥ BIKE RACK
  - ⊥ COMBINED WASTE RECEPTACLE
  - ⊥ TABLE & UMBRELLA
  - ⊥ BICYCLE REPAIR STATION
  - ⊥ BOLLARD
  - ⊥ LIGHT STANDARDS (REFER TO ELECTRICAL)

- ### GENERAL NOTES:
1. Drawings not to be used for construction unless authorized by the Landscape Architect.
  2. Contractor shall report any discrepancies between the drawings and site conditions prior to commencement of the work.
  3. All utility locates are the responsibility of the Contractor. Hand dig within the limits recommended by the service utility. Utility conflicts with proposed tree locations must be reported immediately to the Landscape Architect.
  4. Sixteen Mile Community Centre & Library base drawing provided by Diamond Schmitt Architects.
  5. For Sixteen Mile Community Centre grading information refer to drawing by MTE Consultants.
  6. North Park Sports Park base drawings provided by The MBTW Group.
  7. Landscape drawings show engineering information for design purposes only. Do not construct engineering works from these drawings.

### PLANTING PLAN AREA A

North Park Development: Community Centre, Library and Sports Park, Oakville, ON

DATE	ISSUE	BY
June 10 2022	Issued for Site Plan Application 2	MZ

DATE	REVISIONS	BY
Jan 27 2022	Issued for Coordination	SI
May 2 2022	Issued for Coordination	MZ

1600 West Beaver Creek Road, Suite 100  
West Beaver Creek, Ontario L4B 1P7  
www.gspgroup.ca

Date: June 2022  
Scale: 1:300 @ 35x48

ISSUED FOR SITE PLAN APPROVAL, NOT FOR CONSTRUCTION.

Project No: 21337

L1.40

REFER TO L1.41 FOR PLANTING SCHEDULE

PLANT SCHEDULE COMMUNITY

Table with columns: BOTANICAL NAME, COMMON NAME, SIZE, CONTAINER, REMARKS. Rows include Coniferous Trees (LLA, PGL, PS), Deciduous Trees (AFJ, ASU, AGR, BPA, COV, CC, JN, MD, PLB, QMA, TA), Coniferous Shrubs (JH), Deciduous Shrubs (Aal, An, Cam, CI, DI, Ra, RaG, Rbl), and Ornamental Grasses (Bg, ca, pHM).

PLANTING NOTES:

- 1. ALL PLANT MATERIAL SHALL BE NO. 1 NURSERY GROWN... MEETING SPECIFICATIONS FOR SIZE, HEIGHT, SPREAD... QUALITY METHOD OF CULTIVATION...
2. NO SUBSTITUTIONS IN SPECIES, CULTIVAR, QUANTITY, SIZE OR CONDITION WILL BE PERMITTED WITHOUT THE WRITTEN APPROVAL...
3. ANY INCONSISTENCIES FOUND IN THE QUANTITIES AS SHOWN ON THE PLAN AND THE PLANT LIST SHALL BE IMMEDIATELY REPORTED TO THE CONSULTANT...

GROWING MEDIUM NOTES:

- 1.1. GROWING MEDIUM (TOPSOIL, PLANTING MIXES) AND ORGANIC AMENDMENTS MUST BE TESTED BY AN OMAFRA ACCREDITED AGENCY...
1.2. TOPSOIL: SHALL BE FERTILE, FRIABLE, TOPSOIL, FREE OF FRAGMENTS LARGER THAN 75MM IN SIZE...
2.1. FERTILIZER AND AMENDMENTS: MUST BE MADE AS PER SOIL TESTING AGENCY RECOMMENDATIONS...

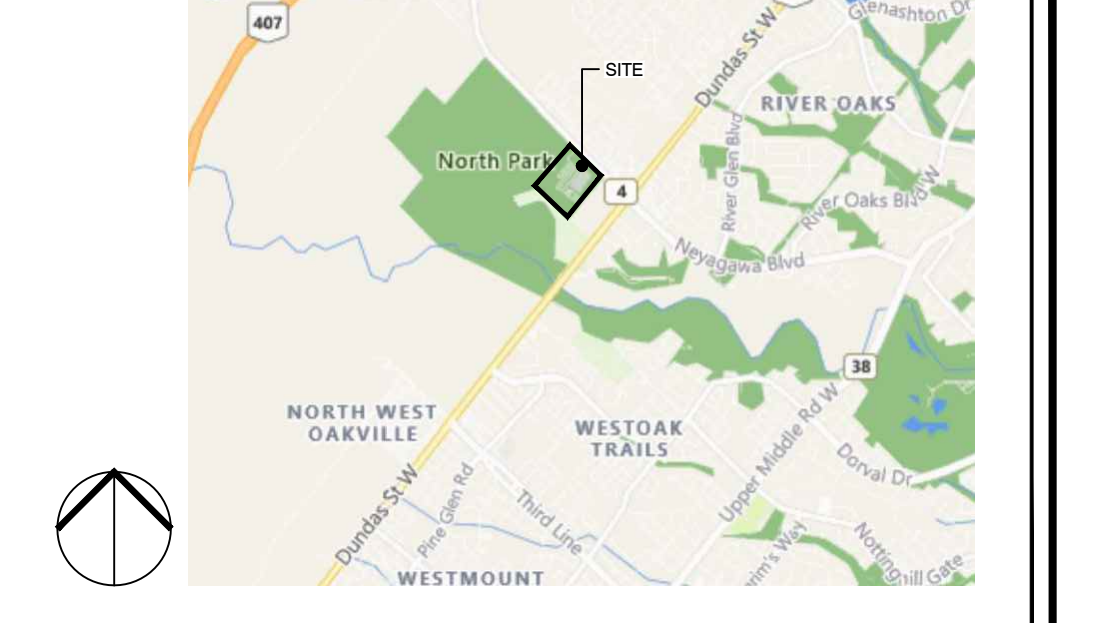
UPLAND SEED MIXTURE:

- 1. TABLELAND PRAIRIE GRASS NATIVE SEED MIXTURE #165 BY OSC SEEDS OR APPROVED SUBSTITUTE
2. CONTAINS: BIG BLUESTEM (ANDRPOON GARARDI), CANADA WILD RYE (ELYMUS CANADENSIS), INDIAN GRASS (SORGHASTRUM NOTARI), LITTLE BLUESTEM (SCHIZACHYR SCOPARUM)...

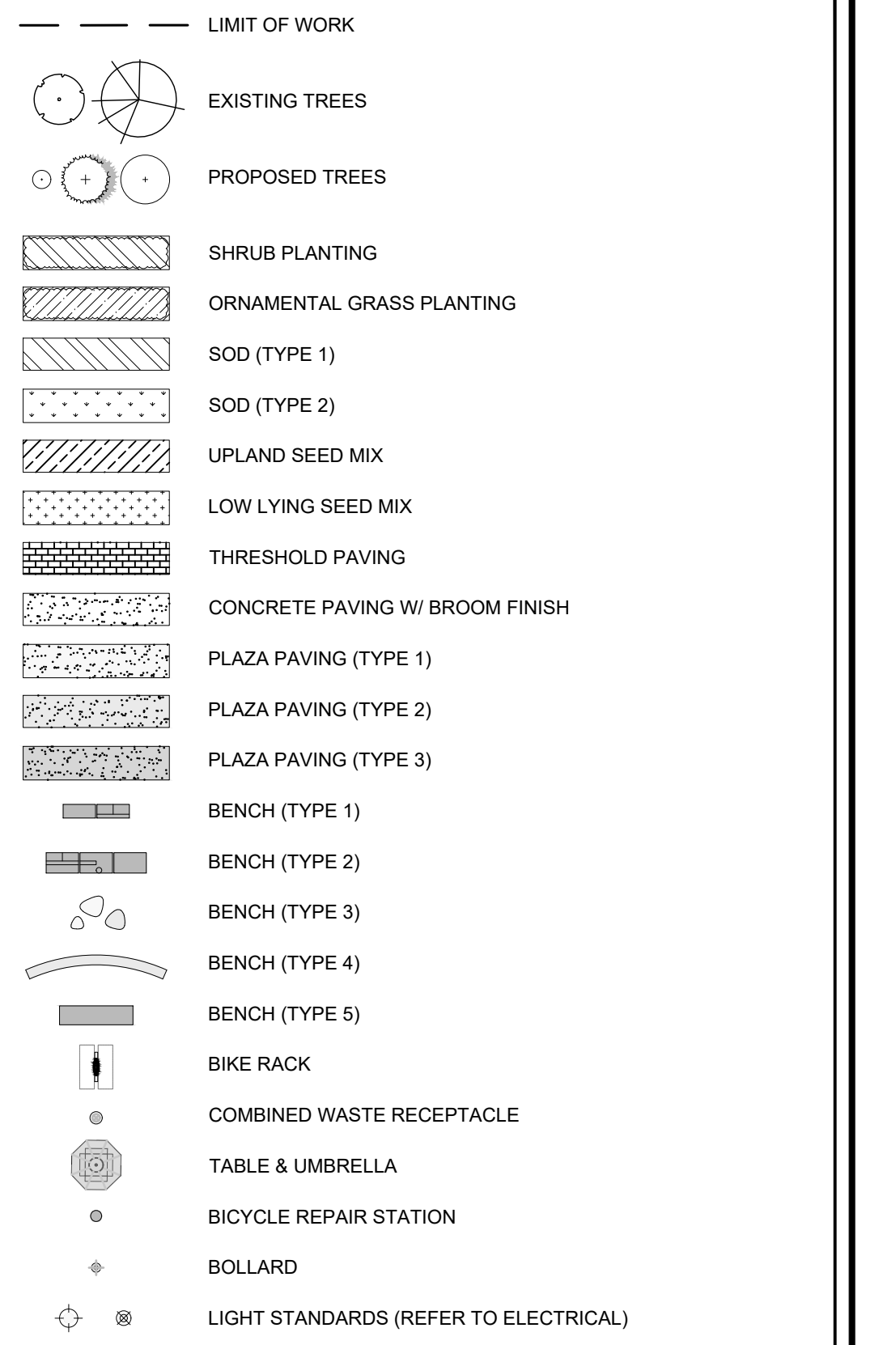
LOW LYING SEED MIXTURE:

- 1. SEASONALLY FLOODED NATIVE SEED MIXTURE #240 BY OSC SEEDS OR APPROVED SUBSTITUTE
2. CONTAINS: DEER TONGUE (PANICUM CLANDESTINUM), FOWL BLUEGRASS (POA PALUSTRIS), FOX SEDGE (CAREX VULPINOIDA)...

Key Plan N.T.S.



Legend



- GENERAL NOTES:
1. Drawings not to be used for construction unless authorized by the Landscape Architect
2. Contractor shall report any discrepancies between the drawings and site conditions prior to commencement of work...

PLANTING PLAN AREA B North Park Development: Community Centre, Library and Sports Park, Oakville, ON

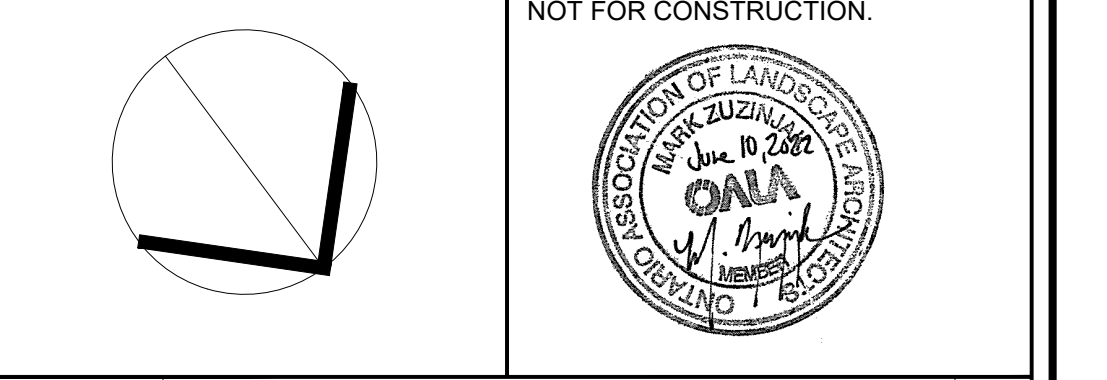
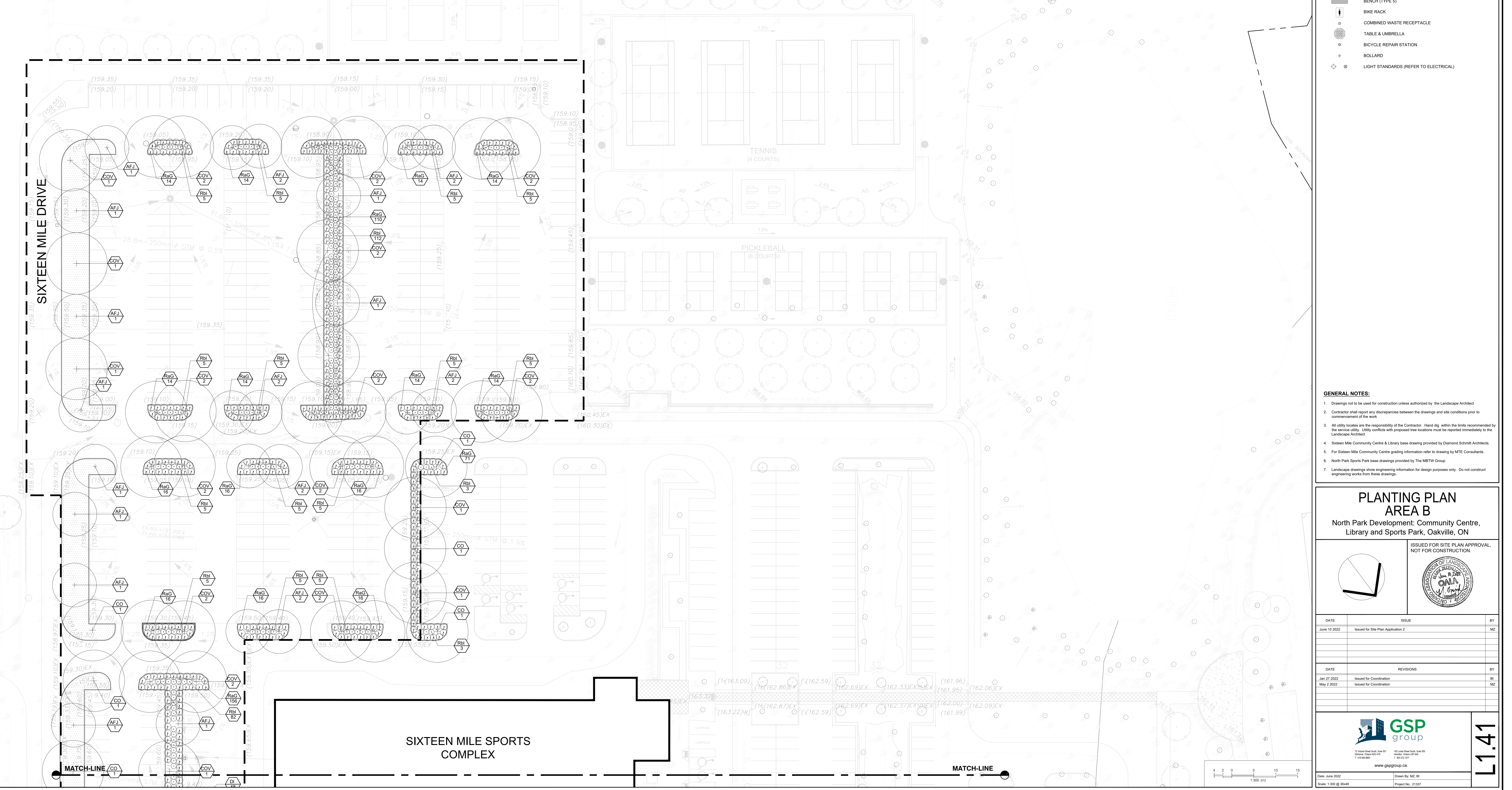
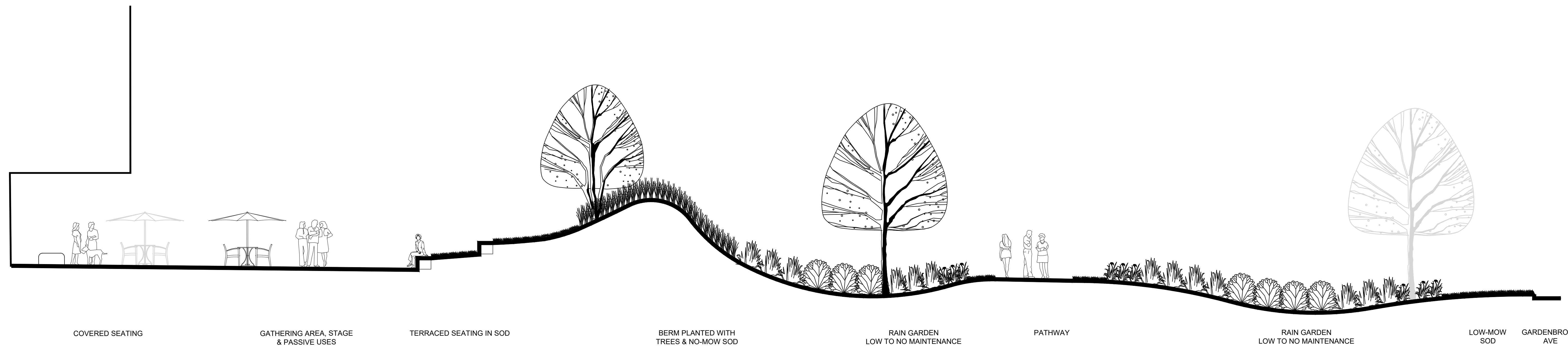


Table with columns: DATE, ISSUE, BY. Rows include June 10 2022 (Issued for Site Plan Application 2) and May 2 2022 (Issued for Coordination).

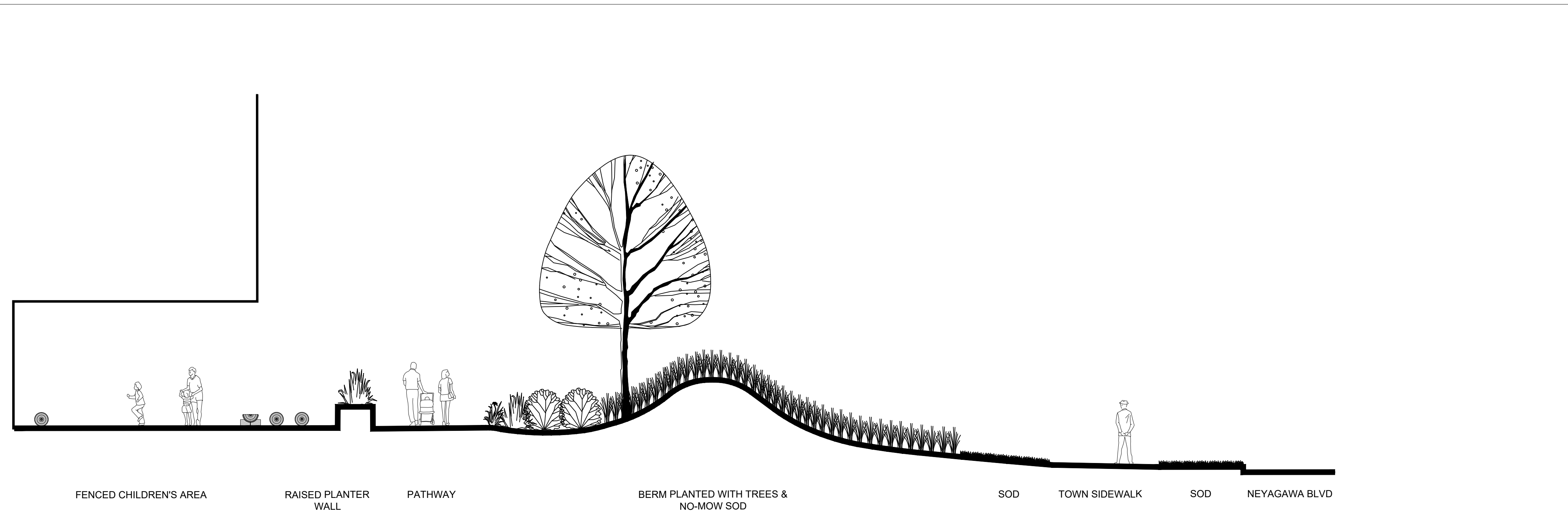
GSP group logo and contact information: 1500 Steeles East, Suite 511, Oakville, Ontario L6H 6K9. Includes website www.gsgroup.ca and scale 1:300 @ 34x48.



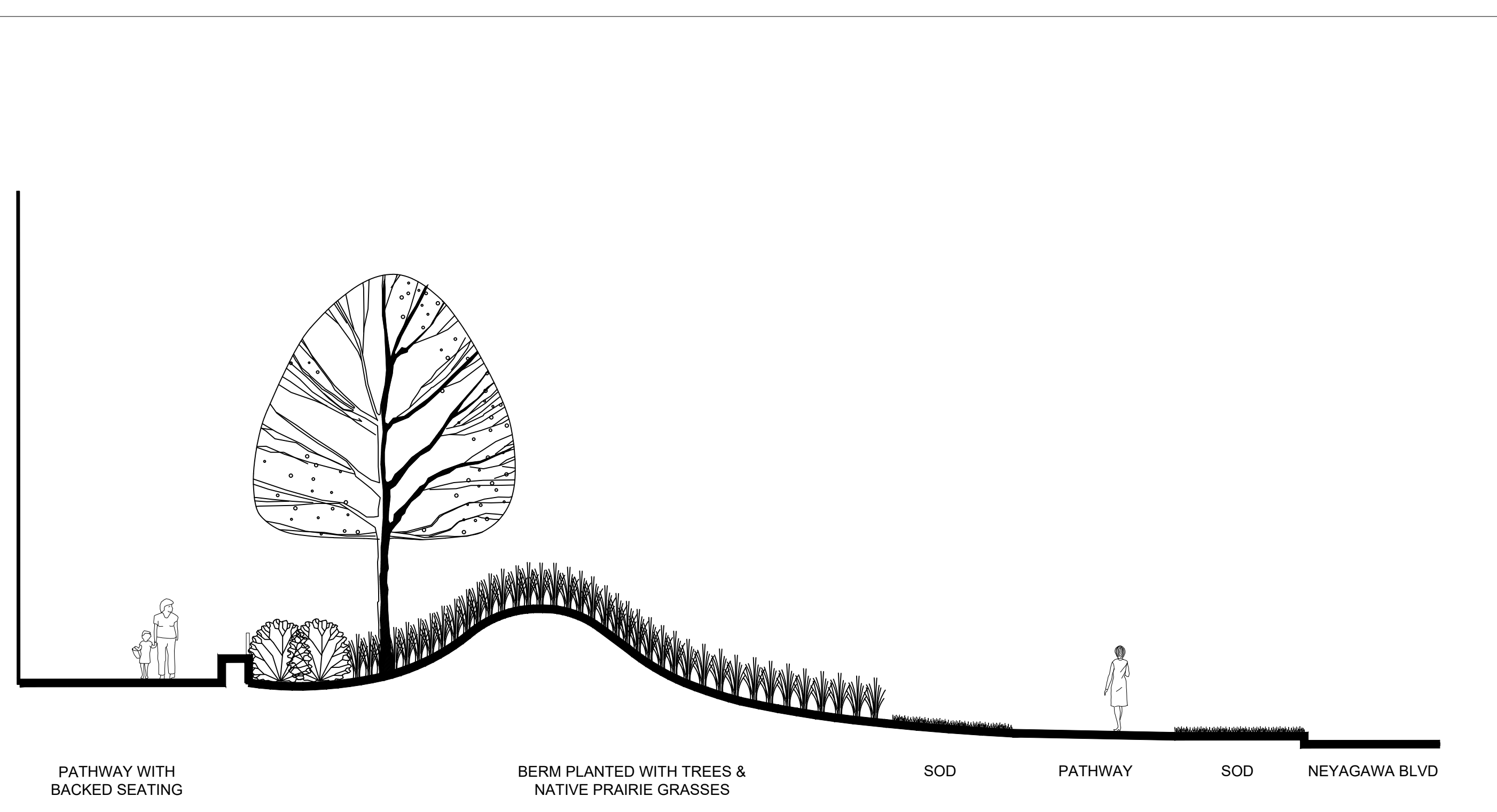
L1.41



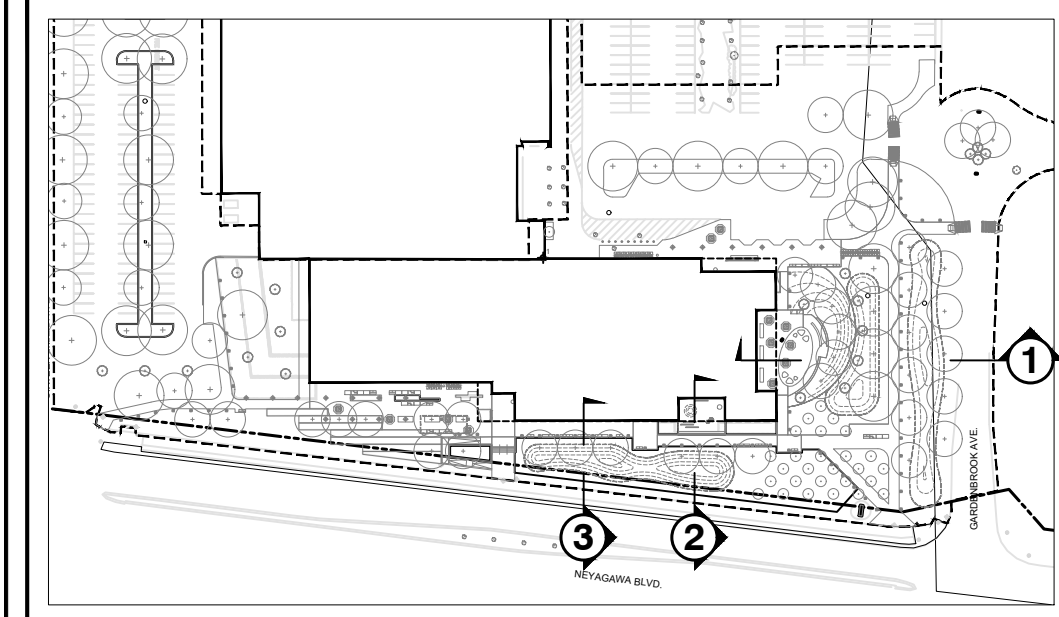
1 WEST SECTION  
1:75



2 NORTH SECTION 1



3 NORTH SECTION 2

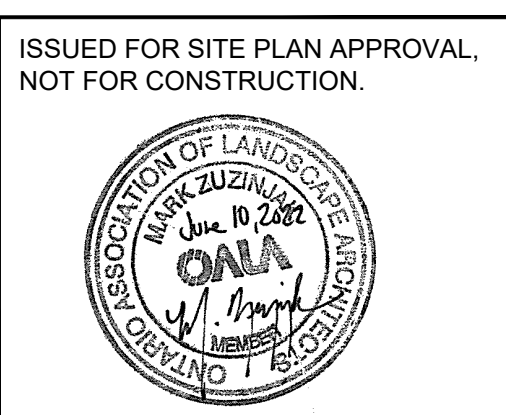


Legend

- GENERAL NOTES:**
1. Drawings not to be used for construction unless authorized by the Landscape Architect.
  2. Contractor shall report any discrepancies between the drawings and site conditions prior to commencement of the work.
  3. All utility locates are the responsibility of the Contractor. Hand dig within the limits recommended by the service utility. Utility conflicts with proposed tree locations must be reported immediately to the Landscape Architect.
  4. Sixteen Mile Community Centre & Library base drawing provided by Diamond Schmitt Architects.
  5. Four Sixteen Mile Community Centre grading information refer to drawing by MTE Consultants.
  6. North Park Sports Park base drawings provided by The MBTW Group.
  7. Landscape drawings show engineering information for design purposes only. Do not construct engineering works from these drawings.

**LANDSCAPE SECTIONS**

North Park Development: Community Centre,  
Library and Sports Park, Oakville, ON



DATE	ISSUE	BY
June 10 2022	Issued for Site Plan Application 2	MZ
DATE	REVISIONS	BY
Dec. 22 2021	Issued for Review	EB
Jan 27 2022	Issued for Coordination	EB
May 2 2022	Issued for Coordination	MZ

**GSP group**

2150 Sheppard Ave. East, Suite 201  
Markham, Ontario L3R 9V8  
1-877-888-8888  
www.gspgroup.ca

100 West Beaver Creek, Suite 200  
Richmond Hill, Ontario L4B 1N7  
905-709-7171

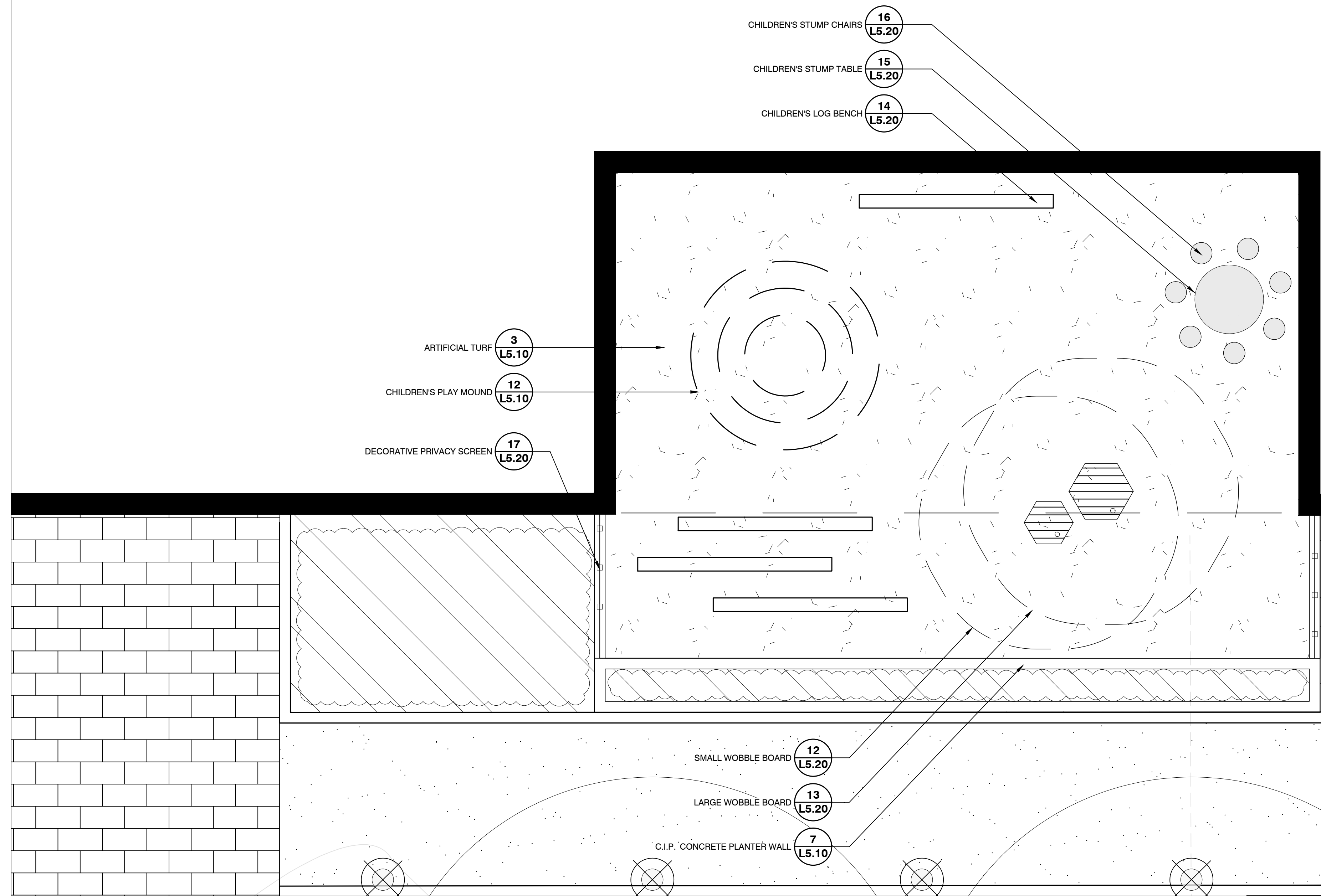
Date: June 2022  
Scale: AS SHOWN

Drawn By: MZ, EB  
Project No.: 21537

L2.00

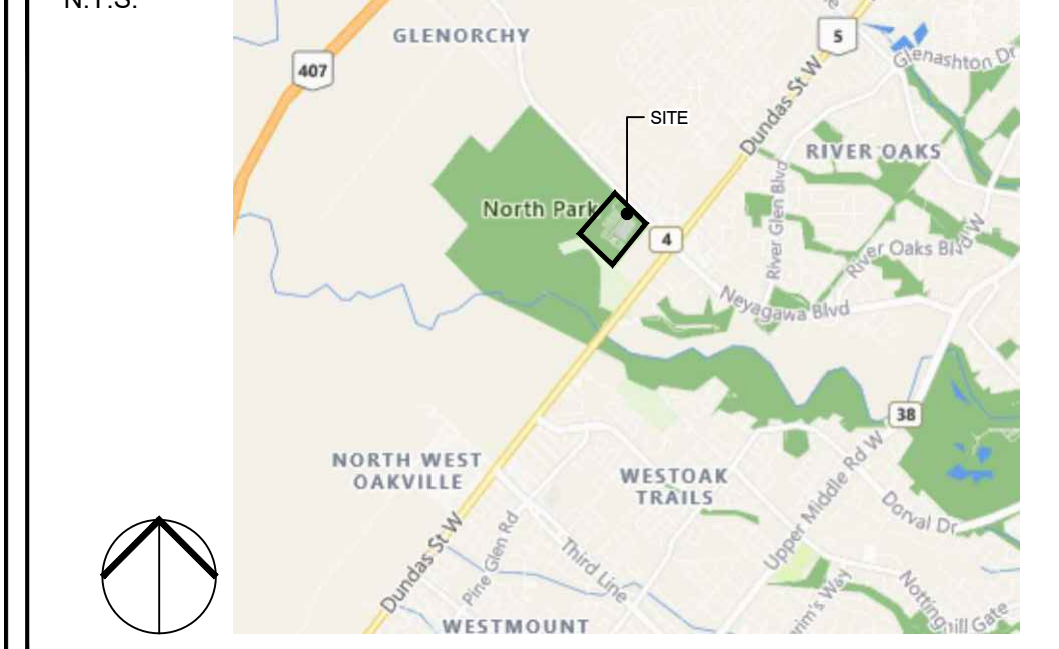


NOTE:  
REFER TO L1.41 FOR PLANTING SCHEDULE



1 CHILDREN'S PLAY AREA ENLARGEMENT

Key Plan  
N.T.S.

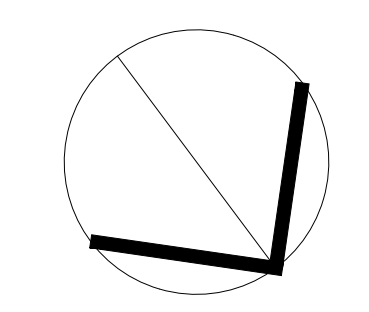


Legend

- GENERAL NOTES:**
1. Drawings not to be used for construction unless authorized by the Landscape Architect.
  2. Contractor shall report any discrepancies between the drawings and site conditions prior to commencement of the work.
  3. All utility locates are the responsibility of the Contractor. Hand dig within the limits recommended by the service utility. Utility conflicts with proposed tree locations must be reported immediately to the Landscape Architect.
  4. Sixteen Mile Community Centre & Library base drawing provided by Diamond Schmitt Architects.
  5. For Sixteen Mile Community Centre grading information refer to drawing by MTE Consultants.
  6. North Park Sports Park base drawings provided by The MBTW Group.
  7. Landscape drawings show engineering information for design purposes only. Do not construct engineering works from these drawings.

LANDSCAPE ENLARGEMENTS

North Park Development: Community Centre,  
Library and Sports Park, Oakville, ON



DATE	ISSUE	BY
June 10 2022	Issued for Site Plan Application 2	MZ

DATE	REVISIONS	BY
Jan 27 2022	Issued for Coordination	SI
May 2 2022	Issued for Coordination	MZ

**GSP group**

11500 Steeles Ave. East, Suite 201  
Markham, Ontario L3R 0Y8  
1-888-888-8888

10000 Steeles Ave. East, Suite 201  
Markham, Ontario L3R 0Y8  
1-888-888-8888

www.gspgroup.ca

Date: June 2022  
Scale: AS SHOWN  
Project No: 21337

Drawn By: MZ, SI

**L4.00**