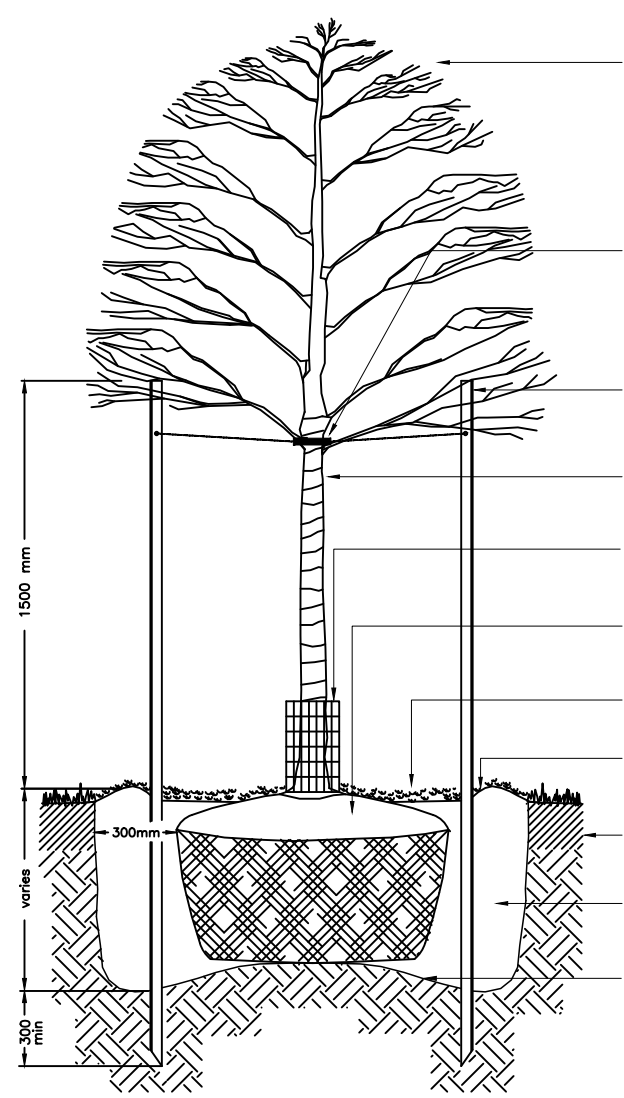


Key	Botanical Name	Common Name	Cal.	Ht.	Spr.	Cond.	Remarks	Total
DECIDUOUS TREES								
Afa	Acer Freemanii 'Autumn Blaze'	Autumn Blaze Maple	70mm			WB	Tree Form	1
Sri	Syringa Recticulata 'Ivory Silk'	Ivory Silk Japanese Lilac	60mm			WB	Tree Form	4
ORNAMENTAL TREES								
Fsd	Fagus Sylvatica 'Dawyc Green'	Dawyc Green Beech	50mm			WB	Tree Form	3
CONIFEROUS TREES								
Pr	Pinus resinosa	Red Pine	175cm			WB	Uniform Specimen	1
toe	Thuja occidentalis 'Emerald'	Emerald Cedar	175cm			WB	Uniform Specimen	10
LARGE DECIDUOUS SHRUBS								
ac	Amelanchier canadensis	Serviceberry	150cm		15 GAL		Multi-stem	1
CONIFEROUS / EVERGREEN SHRUBS								
jhb	Juniperus horizontalis 'Blue Chip'	Blue Chip Juniper	40cm	3 GAL			Uniform Specimen	8
tmh	Taxus x media 'Hicksii'	Hick's Yew	80cm	5 GAL			Uniform Specimen	12

PLANT LIST - LOT A



PRUNE TO PRESERVE THE NATURAL CHARACTER OF THE PLANT: DO NOT REMOVE LEADERS.

TREE SHALL BE FASTENED AROUND TRUNK IN A FIGURE EIGHT USING PLUMBING NO. 9 GAUGE MIN. GALVANIZED IRON WIRE FOR TREES 75mm AND OVER, AND NO. 11 GAUGE FOR SMALLER TREES. RUBBER HOSE SHALL BE BLACK, TWO PLY, REINFORCED, 13mm IN DIAMETER.

RECENT GUARD: 200 MM LONG, 100MM DIA. BIG 'O' PLASTIC PIPE

7" RAIL STEEL STAKES 37mm x 37mm x 5mm

TREE MUST BE DENSE AND FULL WITH COMPLETE BRANCH DEVELOPMENT AND VIGOROUS FOLIAGE.

CUT AND REMOVE BURLAP AND WIRE BASKET FROM TOP 1/3 OF ROOT BALL.

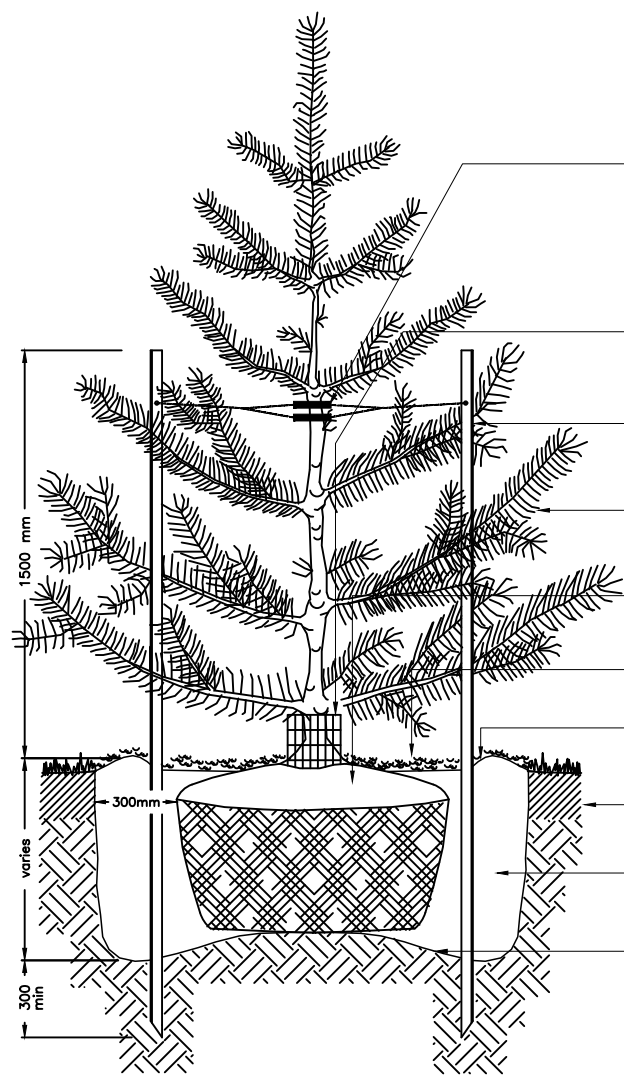
APPROVED MULCH.

CONSTRUCT TOPSOIL SAUCER AROUND TREE BASE.

EXISTING TOPSOIL.

PLANTING SOIL MIXTURE.

SCARIFY SURFACE OF SUBSOIL PRIOR TO PLANTING.



TREE SHALL BE FASTENED AROUND TRUNK IN A FIGURE EIGHT USING PLUMBING NO. 9 GAUGE MIN. GALVANIZED IRON WIRE FOR TREES 1800mm IN HEIGHT AND OVER, AND NO. 11 GAUGE FOR SMALLER TREES. RUBBER HOSE SHALL BE BLACK, TWO PLY, REINFORCED, 13mm IN DIAMETER.

RECENT GUARD: 200 MM LONG, 100MM DIA. BIG 'O' PLASTIC PIPE

7" RAIL STEEL STAKES 37mm x 37mm x 5mm

TREE MUST BE DENSE AND FULL WITH COMPLETE BRANCH DEVELOPMENT AND VIGOROUS FOLIAGE.

CUT AND REMOVE BURLAP AND WIRE BASKET FROM TOP 1/3 OF ROOT BALL.

APPROVED MULCH.

CONSTRUCT TOPSOIL SAUCER AROUND TREE BASE.

EXISTING TOPSOIL.

PLANTING SOIL MIXTURE.

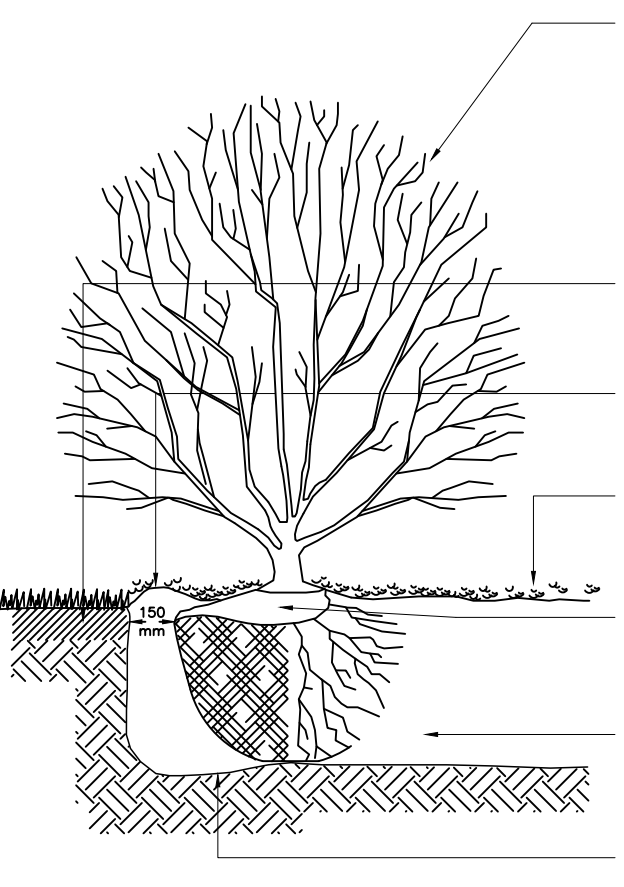
SCARIFY SURFACE OF SUBSOIL PRIOR TO PLANTING.

NOTES:
 - TREES UNDER 70mm REQUIRE TWO STAKES, TREES 70mm CALIPER AND OVER REQUIRE THREE STAKES.
 - SET TREE 50mm HIGHER THAN SURROUNDING GRADE TO ALLOW FOR SETTLEMENT.
 - THE ABOVE DETAIL DOES NOT REPRESENT ANY PARTICULAR SPECIES.

NOTES:
 - TREES UNDER 1800mm REQUIRE TWO STAKES, TREES OVER 1800mm REQUIRE THREE STAKES.
 - SET TREE 50mm HIGHER THAN SURROUNDING GRADE TO ALLOW FOR SETTLEMENT.
 - THE ABOVE DETAIL DOES NOT REPRESENT ANY PARTICULAR SPECIES.

DECIDUOUS TREE PLANTING DETAIL NO. 1

CONIFEROUS TREE PLANTING DETAIL NO. 2



PRUNING - (TO SUIT SPECIES) PRUNE LARGE BRANCHES BY 1/3 TO REMOVE DAMAGED OR OBSERVABLE BRANCHES FOLLOWING PROPER HORTICULTURAL PRACTICE. DO NOT PRUNE LEADERS. PRUNE TO PRESERVE THE NATURAL CHARACTER OF THE PLANT.

GRUBBING - AS DIRECTED, APPROPRIATE TO SPECIES AND SIZE OF SHRUB

EXISTING TOPSOIL.

CONSTRUCT 100mm TOPSOIL SAUCER AROUND SHRUB BASE OR SHRUB BED TO RETAIN MULCH.

MULCHING - 60 mm APPROVED MULCH

CUT AND REMOVE BURLAP FROM TOP 1/3 OF ROOT BALL. REMOVE ROOTS FROM ALL POTTED MATERIAL.

PLANTING SOIL MIXTURE.

SEPARATION - AS DIRECTED, APPROPRIATE TO SPECIES OR RUBBISH OFF SITE. ALL DIMENSIONS ARE IN mm.

SCARIFY SURFACE OF TOPSOIL PRIOR TO PLANTING.

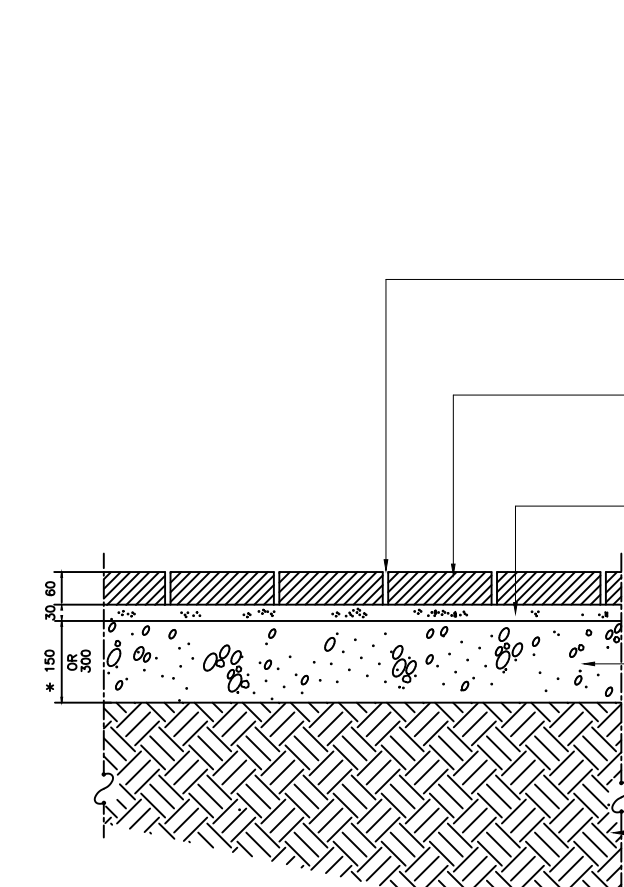
FERTILIZING - APPLY APPROVED WATER SOLUBLE FERTILIZER AT A RATE OF 10g PER 100mm². ENSURE FERTILIZER IS CONTAINED WITHIN SAUCER AND EVENLY MIXED INTO PLANTING SOIL MIXTURE.

BASEL ROOT - (B.R. IN PLANT LIST). SET ALL PLANT MATERIAL SLIGHTLY HIGHER THAN ADJACENT GRADE. SET BARE ROOT PLANT MATERIAL SO THAT ROOTS LIE IN NATURAL STATE. GENTLY BACKFILL WITH SOIL MIXTURE. WORKING SOIL BETWEEN ROOTS. LIGHTLY TAMP SOIL TO ELIMINATE AIR POCKETS AND REDUCE SETTLEMENT. WATER PLANTING BED THOROUGHLY, IMMEDIATELY AFTER PLANTING.

PLANTING SOIL MIXTURE (MIX THOROUGHLY)
 6 PARTS GOOD QUALITY TOPSOIL,
 2 PARTS WELL ROTTED COW MANURE,
 1 PART PEAT MOSS.
 PREPARATION OF BED
 - LOCATE SHRUB BED TO SIZE OUTLINED ON DRAWINGS.
 - MAINTAIN MINIMUM 450 mm DEPTH.

NOTES:
 - PLANTING METHOD ILLUSTRATED, SHALL APPLY EQUALLY TO BARE ROOT STOCK AND BALLED STOCK.
 - SET SHRUBS 50 mm HIGHER THAN SURROUNDING GRADE TO ALLOW FOR SETTLEMENT.
 - SHRUBS PLANTED IN GROUPS SHALL BE SET IN CONTINUOUS BEDS.
 - THE ABOVE DETAIL DOES NOT REPRESENT ANY PARTICULAR SPECIES.

SHRUB PLANTING DETAIL DETAIL NO. 3

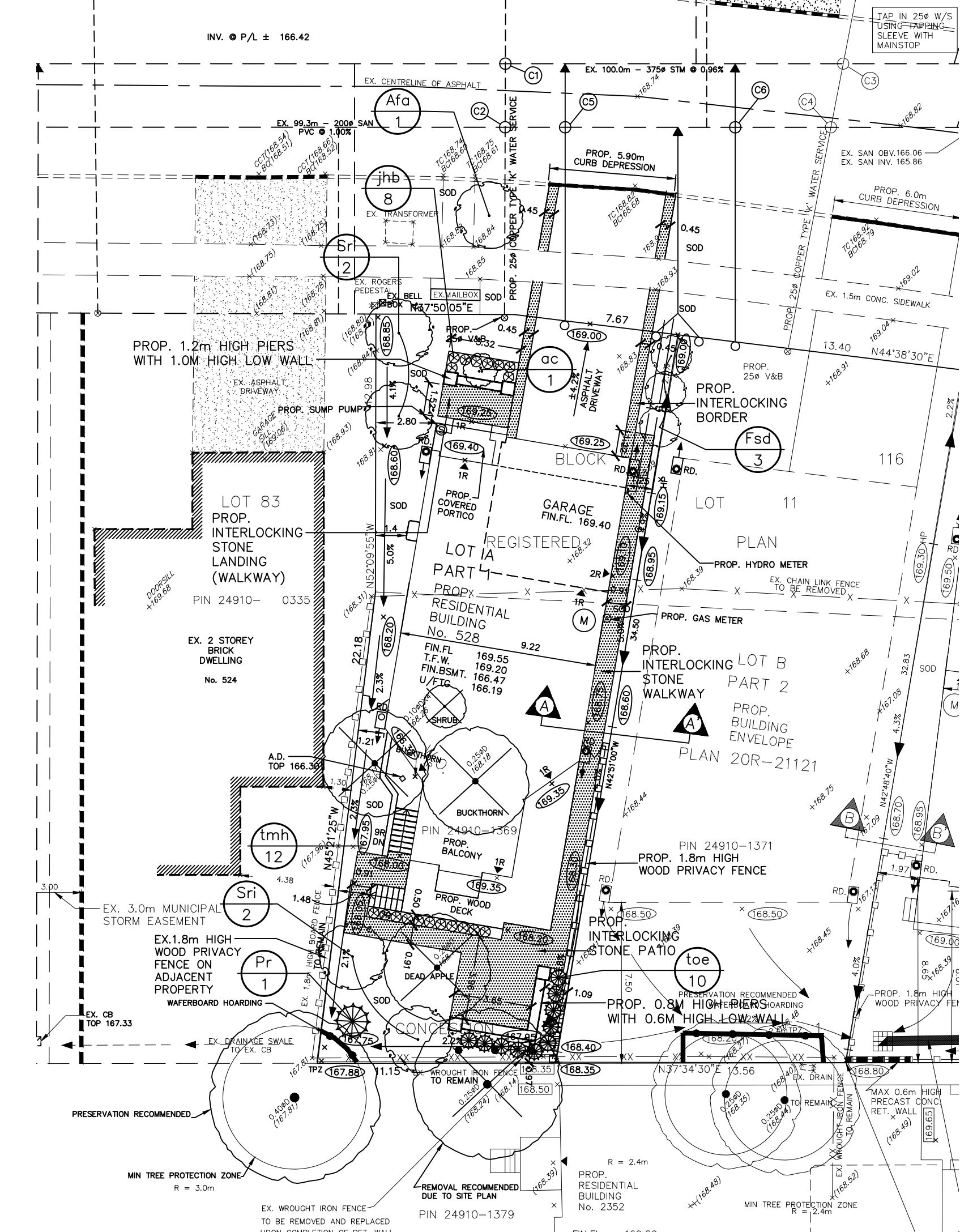


150mm DEPTH BASE FOR PEDESTRIAN SURFACES
 300mm DEPTH BASE FOR DRIVEWAY SURFACES

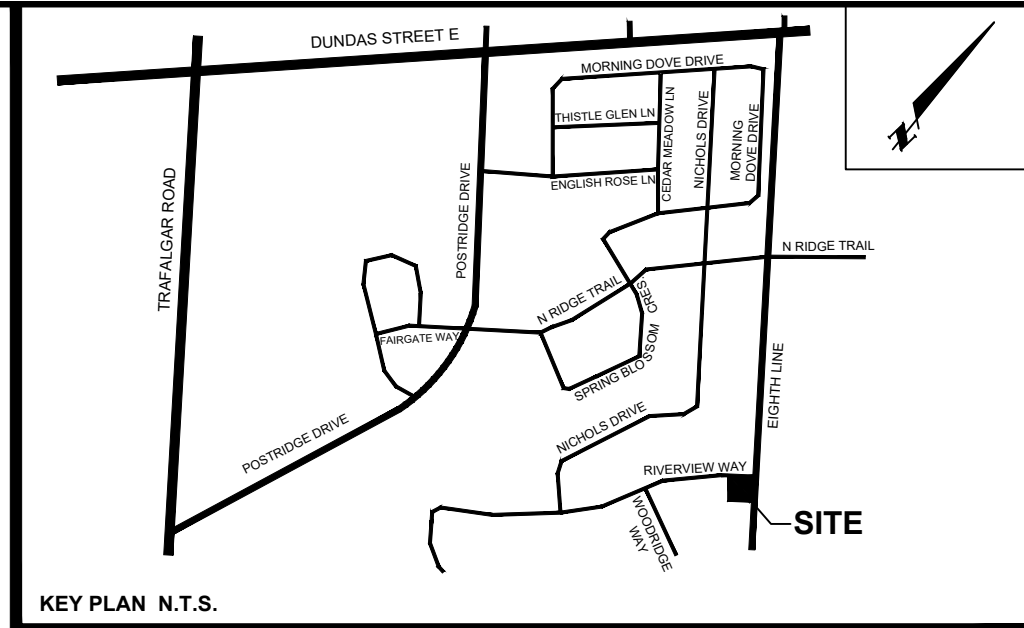
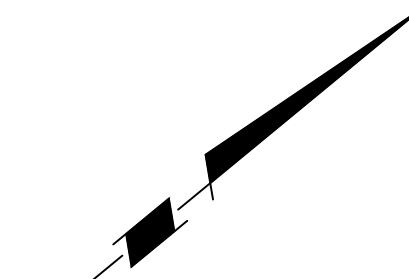
UNIT PAVERS:
 TYPE: BEACON HILL FLAGSTONE WITH CORTHORNE DOUBLE INNER BAND BY UNLOCK OR APPROVED EQUAL.
 THICKNESS: 60MM FOR WALKWAY & PATIO, 80MM FOR DRIVEWAY.
 COLOUR: BEACON HILL FLAGSTONE/GRANITE FUSION, CORTHORNE: BASALT.

NOTES:
 - SUBGRADE AND GRANULAR COMPACTION TO CONFORM WITH OPSS FORM 501.
 - PRECAST CONCRETE UNIT PAVERS TO BE UNLOCK PRODUCT OR APPROVED EQUAL.
 - CRUSHER RUN LIMESTONE TO CONFORM WITH OPSS FORM 1010 GRADATION FOR GRANULAR 'A'.

INTERLOCKING STONE PAVERS DETAIL NO. 4



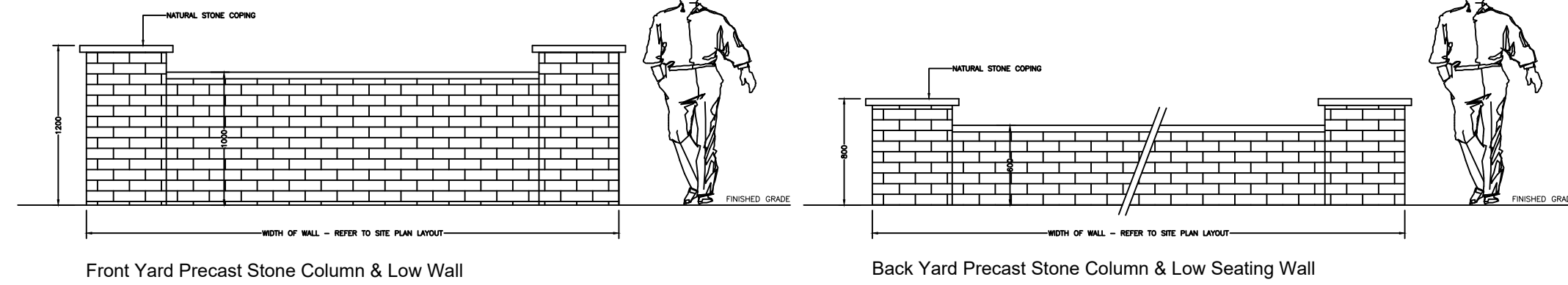
NOTE:
 THE MUNICIPAL RIGHT-OF-WAY WILL BE RESTORED TO THE SATISFACTION OF THE TOWN OF OAKVILLE.



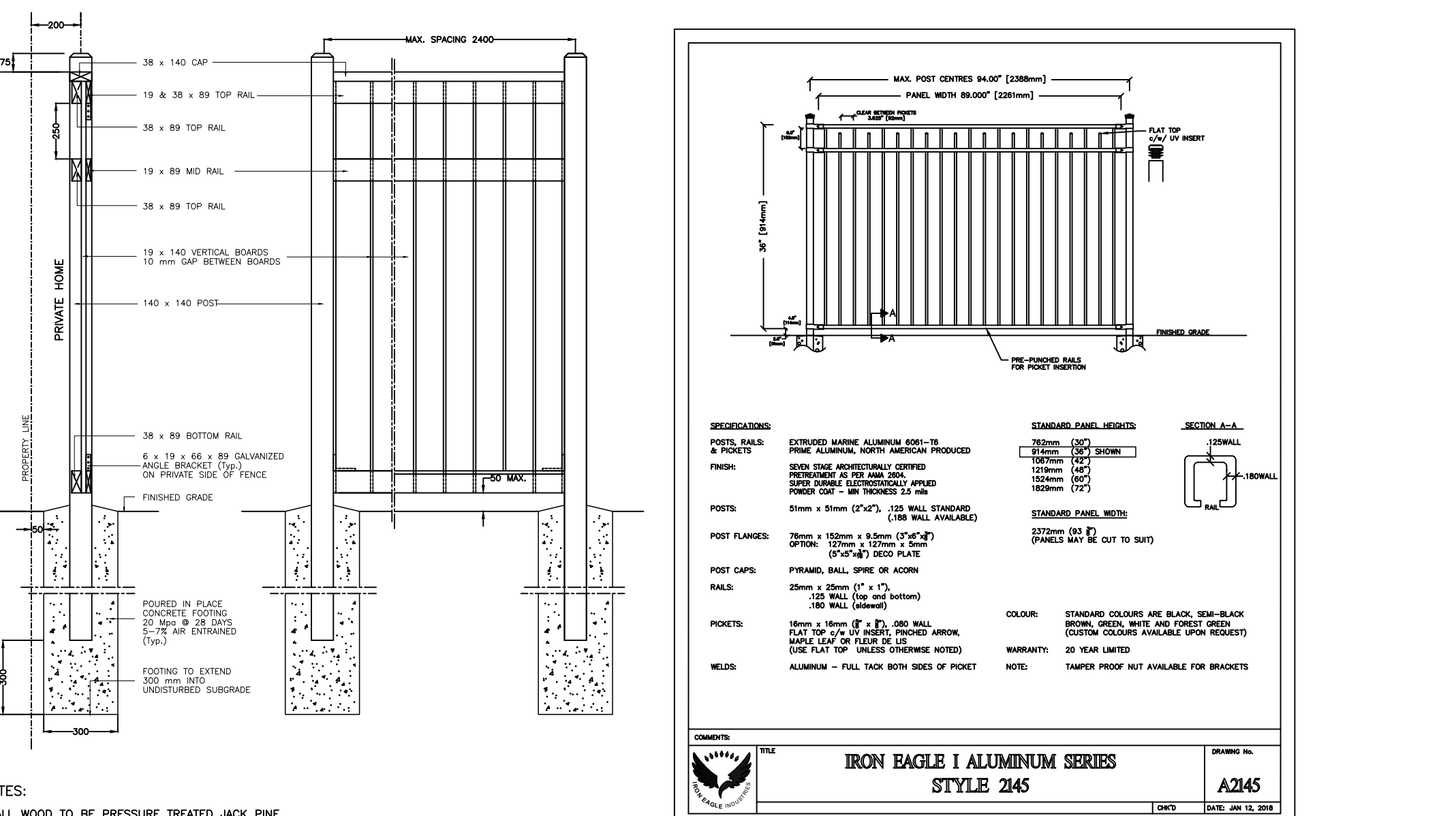
LEGEND

- PROPOSED DECIDUOUS TREES
- PROPOSED CONIFEROUS TREES
- PROPOSED ORNAMENTAL TREES
- PROPOSED LARGE DECIDUOUS SHRUBS
- PROPOSED DECIDUOUS, EVERGREEN SHRUBS & PERENNIAL
- INTERLOCKING STONE PAVERS - DRIVEWAY, BORDER, LANDING, WALKWAY & PATIO. SEE DETAIL 4.
- FRONT YARD 1.2M HIGH PIERS AND 1.0M HIGH LOW WALL FEATURE. SEE DETAIL 7.
- BACK YARD 0.8M HIGH PIERS AND 0.6M HIGH LOW WALL FEATURE. SEE DETAIL 7.
- 1.8M HIGH WOOD PRIVACY FENCE SEE DETAIL 5.
- 1.0M HIGH DECORATIVE FENCE SEE DETAIL 6.
- FRAMED TREE HOARDING REFER TO TIPP PREPARED BY KUNTZ FORESTRY CONSULTING INC.

LANDSCAPE SITE PLAN

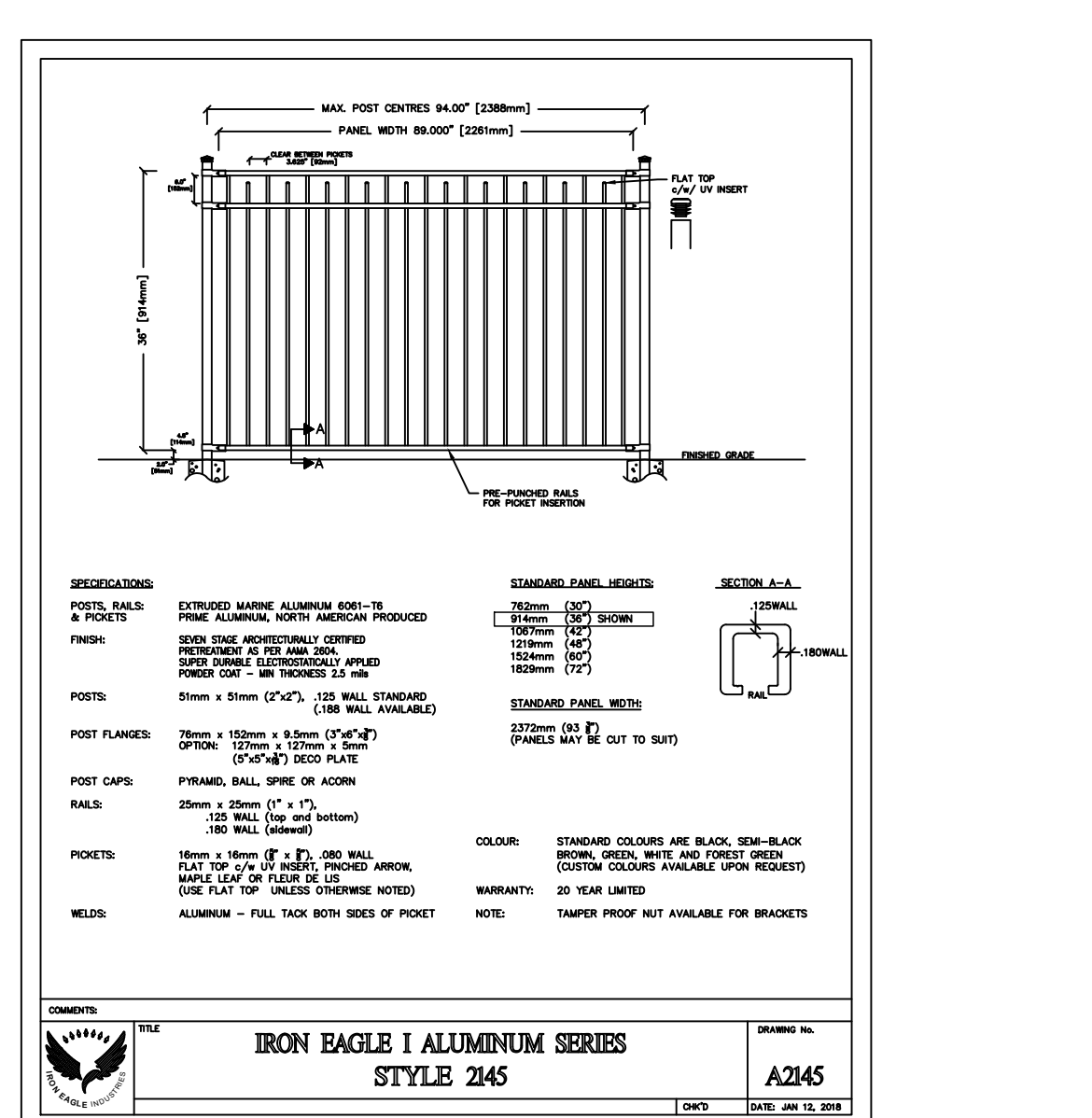


FRONT & BACK YARD PIERS & WALLS DETAIL NO. 7



NOTES:
 - ALL WOOD TO BE PRESSURE TREATED JACK PINE.
 - ALL FASTENERS TO BE HOT DIPPED GALVANIZED.

1.8M HT. WOOD PRIVACY FENCE DETAIL NO. 5



1.0M HT. DECORATIVE METAL FENCE DETAIL NO. 6



NOTE:
 FOR ADDITIONAL INFORMATION, DETAILS, DIMENSIONS AND CONFORMITY TO THE SITE PLAN, THE CONTRACTOR MUST REFER TO THE ARCHITECTURAL SITE PLAN PREPARED BY: VERUS DESIGN

FOR GRADING INFORMATION, SERVICING & UTILITIES, THE CONTRACTOR MUST REFER TO GRADING PLAN PREPARED BY: SKIRA ASSOCIATES LTD.

No.	DATE	REVISION	INIT.
3	AUG. 15/22	2ND SUBMISSION TO TOWN	P.H.
2	MAR. 10/22	FIRST SUBMISSION TO TOWN	P.H.
1	FEB. 28/22	ISSUED TO ARCH & ARBORIST FOR REVIEW	P.H.

TODESIGN landscape designer
 34 Sequoia Drive, Markham, Ontario L6C 3J1
 416 993 1968

PROPOSED RESIDENTIAL BUILDINGS
 PART OF BLOCK 116, REGISTERED PLAN 20M-706, AND PART OF LOT 11, CONCESSION 1, SOUTH OF DUNDAS STREET

2358 EIGHTH LINE

MEADOWRIDGE DEVELOPERS INC.
 13182 BRITANNIA ROAD, MILTON, ONTARIO L9E 0V5 TEL. (647) 533-8780

TOWN OF OAKVILLE

LANDSCAPE PLAN FOR LOT A

DATE: FEBRUARY 2022 AREA: OAKVILLE REGION FILE:
 SCALE: 1:200 DRAWN BY: P.H. DWG.No. **LP-01**