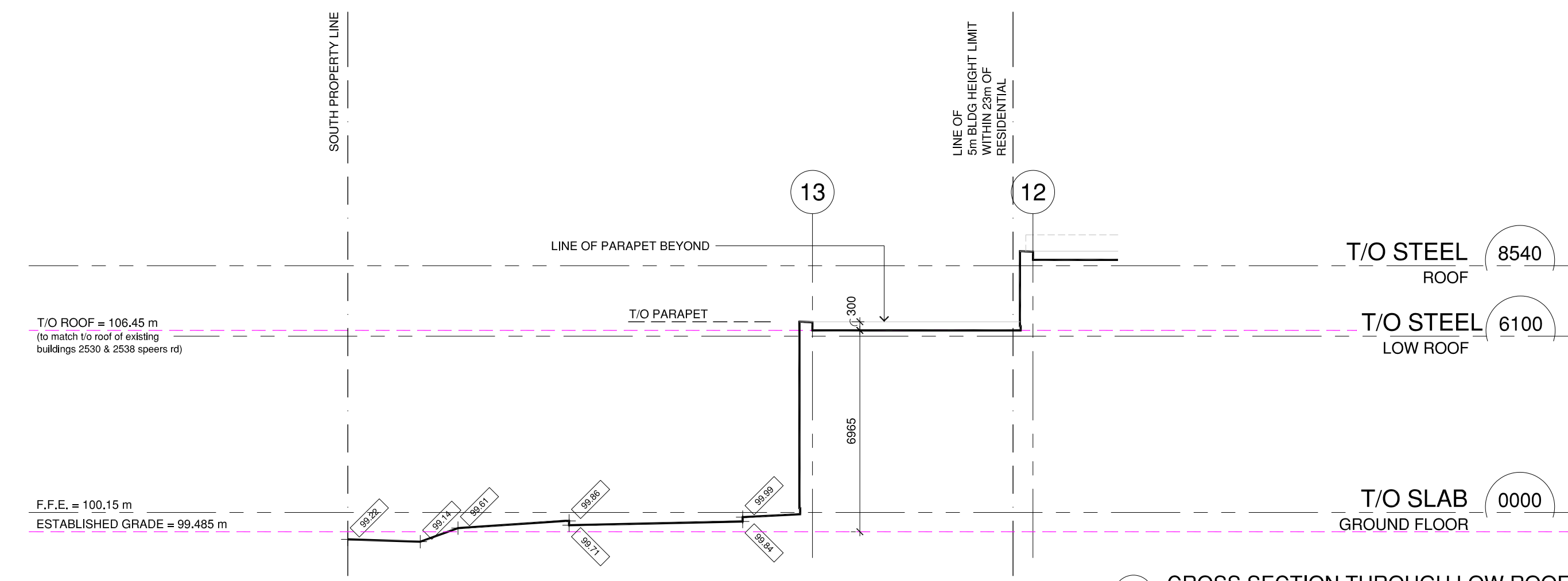
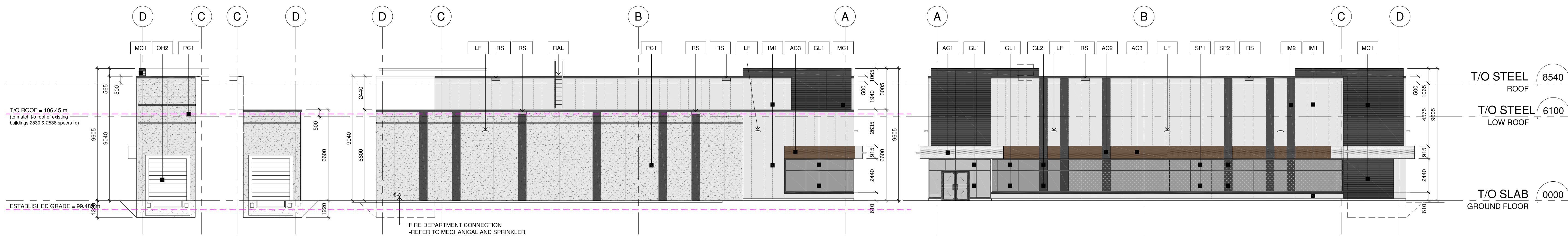


7 EAST ELEVATION
SCALE 1:150



6 CROSS SECTION THROUGH LOW ROOF
SCALE 1:150 NORTH-SOUTH SECTION LOOKING WEST

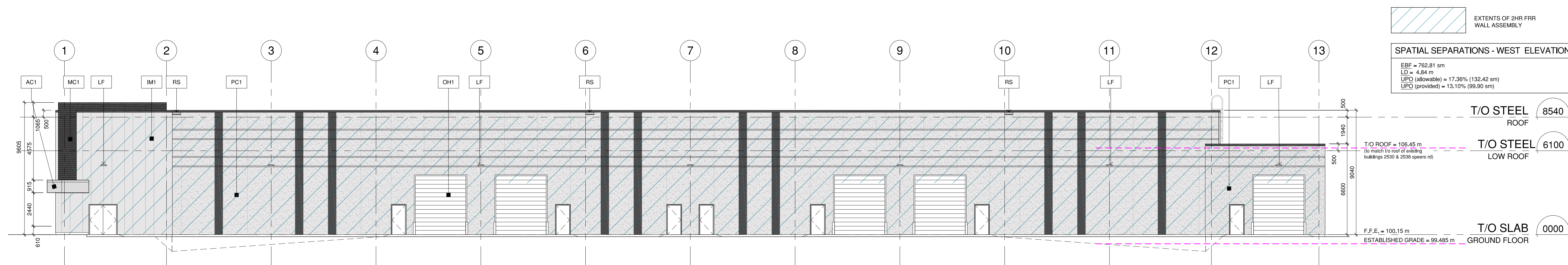


5 PARTIAL SOUTH ELEVATION
SCALE 1:150

4 PARTIAL NORTH ELEVATION
SCALE 1:150

3 SOUTH ELEVATION
SCALE 1:150

2 NORTH ELEVATION
SCALE 1:150



1 WEST ELEVATION
SCALE 1:150

REFER TO A0.1 + A0.2 FOR ASSEMBLY TYPES SCHEDULE, EXTERIOR FINISHES, AND DRAWING LEGEND

Pearce McCluskey Architects
2203 Durwin Drive • Mississauga, Ontario • L5L 1X2
www.pmarchitects.ca 1.905.607.2444

PEARCE MCCLUSKEY ASSOCIATES
KEY: RAMMORD MCCLUSKEY
LICENCE 5612

This drawing is not to be used for construction unless signed by partner in charge.
Contractors must verify all dimensions and be responsible for same, report any discrepancies to the architect before commencing the work.
Prints are not to be scaled.

All drawings and related documents are the sole copyright property of the architect and must be returned upon request, any reproduction of drawings and related documents in part or in whole is forbidden without the architect's written permission.

detail number key to details
sheet number

SOUTHDOWN BUILDERS LIMITED

OWNER: SOUTH DOWN BUILDERS LIMITED
2241 Avenue Road
Toronto | Ontario | M5M 4A5

APPLICANT:

Site Plan Application File No.
Town of Oakville - SP.1630.031/01

- △ Reissued for Site Plan Approval 06 Feb 23
- △ Issued for COA 02 Nov 22
- △ Issued for Site Plan Approval 26 July 22

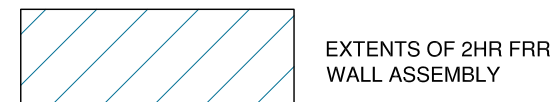
Speers Road Redevelopment
2538, 2530, 2526 Speers Road
Oakville, Ontario

BUILDING A OVERALL ELEVATIONS

Project Number:
21067

Drawn By: KM
Checked By: KM
Date: JULY 2022
Scale: 1:150
Sheet Number:

A3.0A



EXTENTS OF 2HR FRR WALL ASSEMBLY

SPATIAL SEPARATIONS - NORTH ELEVATION

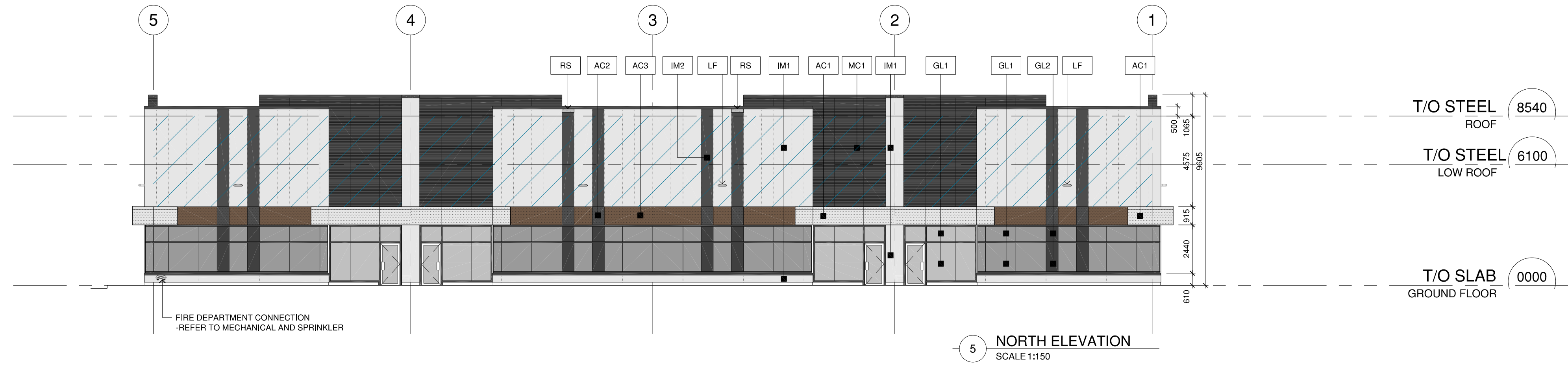
EBF = 429.90 sm
LD = 10.49 m
UPO (allowable) = 55% (236.45 sm)
UPO (provided) = 48.34% (207.83 sm)

SPATIAL SEPARATIONS - EAST ELEVATION

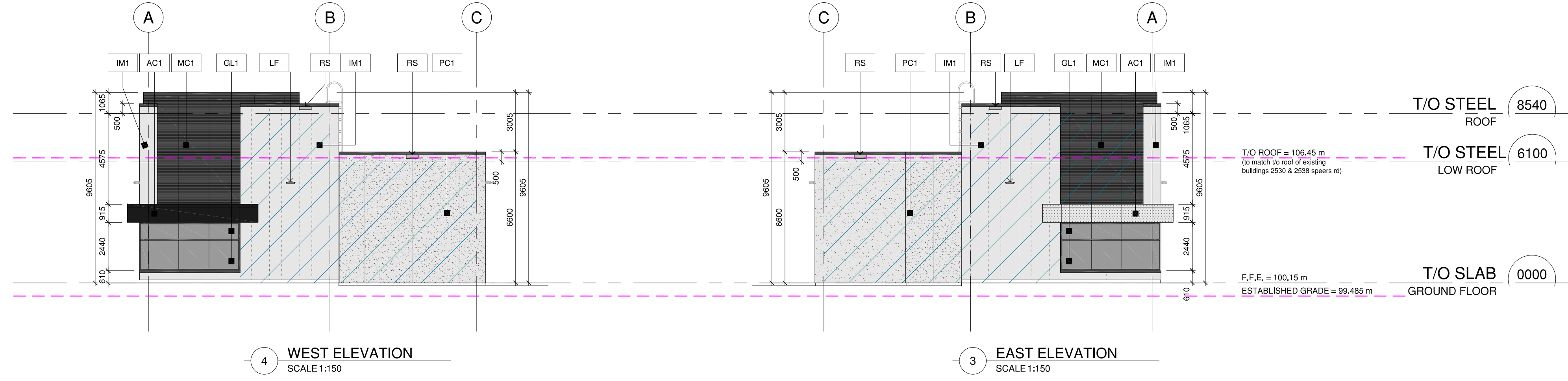
EBF = 123.26 sm
LD = 4.24 m
UPO (allowable) = 23.08% (28.45 sm)
UPO (provided) = 17.22% (21.22 sm)

SPATIAL SEPARATIONS - WEST ELEVATION

EBF = 123.26 sm
LD = 6.95 m
UPO (allowable) = 38.19% (47.07 sm)
UPO (provided) = 32.71% (40.32 sm)

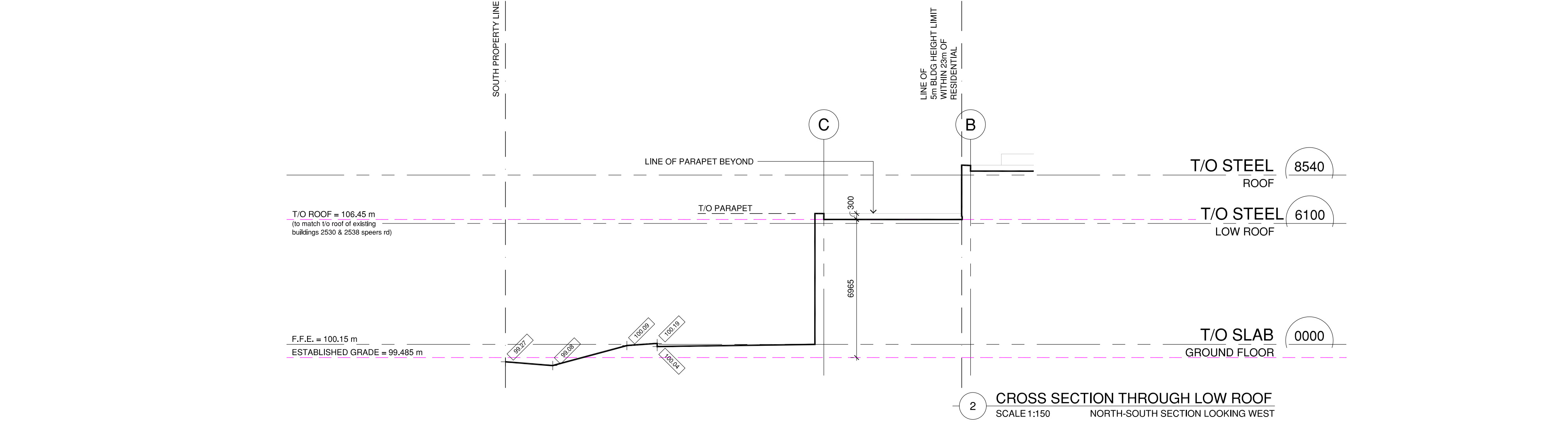


5 NORTH ELEVATION
SCALE 1:150

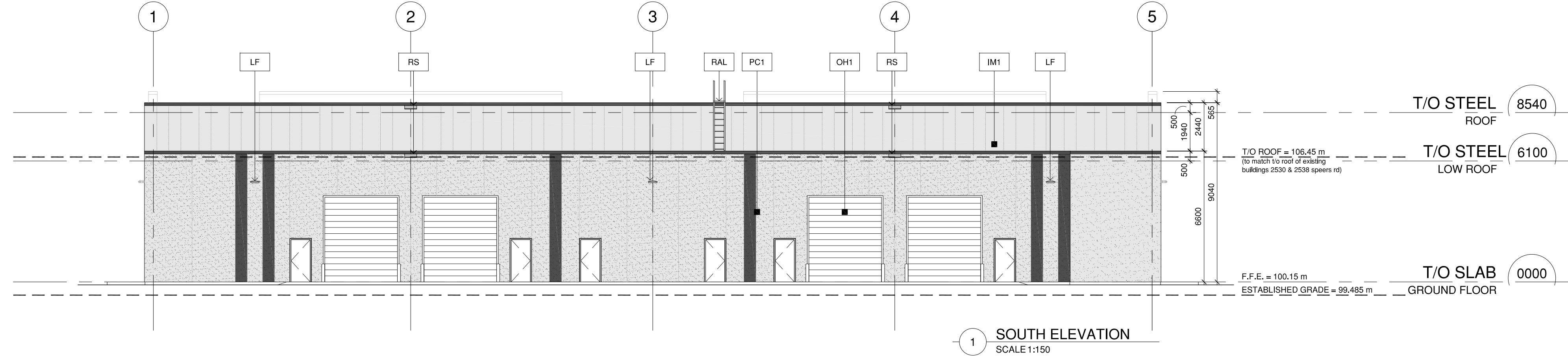


4 WEST ELEVATION
SCALE 1:150

3 EAST ELEVATION
SCALE 1:150



2 CROSS SECTION THROUGH LOW ROOF
SCALE 1:150
NORTH-SOUTH SECTION LOOKING WEST



1 SOUTH ELEVATION
SCALE 1:150

REFER TO A.0.1 + A.0.2 FOR ASSEMBLY TYPES SCHEDULE, EXTERIOR FINISHES, AND DRAWING LEGEND

Pearce McCluskey Architects
2203 Durwin Drive • Mississauga, Ontario • L5L 1X2
www.pmarchitects.ca 1.905.607.2444

ONTARIO ASSOCIATION OF ARCHITECTS
PEARCE MCCLUSKEY ARCHITECTS
LICENCE 5612

This drawing is not to be used for construction unless signed by partner in charge.
Contractors must verify all dimensions and be responsible for same, report any discrepancies to the architect before commencing the work.
Prints are not to be scaled.

All drawings and related documents are the sole copyright property of the architect and must be returned upon request, any reproduction of drawings and related documents in part or in whole is forbidden without the architect's written permission.

SOUTHDOWN BUILDERS LIMITED

OWNER: SOUTH DOWN BUILDERS LIMITED
2241 Avenue Road
Toronto | Ontario | M5M 4A5

APPLICANT:

Site Plan Application File No.
Town of Oakville - SP.1630.031/01

- △ Reissued for Site Plan Approval 06 Feb 23
- △ Issued for COA 02 Nov 22
- △ Issued for Site Plan Approval 26 July 22

Speers Road Redevelopment
2538, 2530, 2526 Speers Road
Oakville, Ontario

BUILDING B OVERALL ELEVATIONS

Project Number:
21067

Drawn By: KM
Checked By: KM
Date: JULY 2022
Scale: 1:150
Sheet Number:

A3.0B