

- LEGEND - SITE SYMBOLS**
 - LAP: ASPHALT PAVING, LIGHT DUTY. REFER TO GEOTECHNICAL REPORT.
 - HAP: ASPHALT PAVING, HEAVY DUTY. REFER TO GEOTECHNICAL REPORT.
 - CAP: CONCRETE APRON. SEE STRUCTURAL FOR DETAILS.
 - G: GRASS AND OTHER LANDSCAPING. SEE LANDSCAPE.
 - CSW: CONCRETE SIDEWALK. EXPANSION JOINT @ 5'-0" O.C. SEE SPECIFICATIONS / SEE CIVIL PLAN.
 - TWS: TACTILE WALKING SURFACE INDICATOR.
 - EK-D: EXISTING FENCE TO DEMOLISH.
 - GAS: GALVANIZED EXTERIOR STAIR AND GUARDRAIL.
 - H: BARRIER FREE PARKING SIGN ACCORDING TO CITY STANDARDS.
 - S: STOP SIGN.
 - FR: FIRE ROUTE SIGN ACCORDING TO CITY STANDARDS.
 - NLF: NEW WALL MOUNTED LIGHT FIXTURE. SEE ELECTRICAL PLANS.
 - NLP: NEW LIGHTING POLE. SEE ELECTRICAL PLANS.
 - PL: YELLOW PAINTED LINE - EXTERIOR.
 - ECC: EXTERIOR CONCRETE CURBS. SEE CIVIL FOR DETAIL.
 - RPM: HANDICAP RAMP. SEE SPECIFICATIONS / CIVIL ENGINEERING PLAN.
 - MH: MANHOLE. SEE CIVIL PLAN.
 - CB: CATCH BASIN. SEE CIVIL PLAN.
 - TD: TRENCH DRAIN. SEE CIVIL FOR DETAIL.
 - BCGA: GALVANIZED BOLLARD, 4" DIA X 4'-0" HT. OR 8" DIA X 4'-0" HT. FULL WITH CONCRETE. CLOSED END WITH GALVANIZED CAP. INSTALLED IN A CONCRETE SCOUROUT OF 20" X 5'-0" DEPTH MIN.
 - BPG: YELLOW PAINTED BOLLARD, 4" DIA X 4'-0" HT. OR 8" DIA X 4'-0" HT. 1" DIA DEPTH. FULL WITH CONCRETE. CLOSED END WITH CAP.
 - PH: FIRE HYDRANT. PROVIDE 4" PROTECTION BOLLARDS AND MAINTAIN REQUIRED CLEARANCES AROUND FIRE HYDRANT.
- LEGEND - SITE WAY FINDING**
 - 10: STOP SIGN. 60x60 cm OCTAGON.
 - 11: MAX SPEED LIMIT. SIGN 45 X 60 cm.
 - 12: MAX SPEED LIMIT. SIGN 45 X 60 cm.
 - 13A: NO PARKING FIRE - FIRE LANE. SIGN 45 X 60 cm.
 - 14A: NO PARKING ANY TIME. SIGN 45 X 60 cm.
 - 15A: NO ENTRY - AUTHORIZED PERSONNEL ONLY. SIGN 45 X 60 cm.
 - 16A: VISITOR PARKING. SIGN 45 X 60 cm.
 - 17A: 15 MINUTE PARKING. SIGN 45 X 60 cm.
 - 18A: HANDICAPPED PARKING. SIGN 45 X 60 cm.
 - 19A: FUTURE ELECTRIC PARKING. SIGN 45 X 60 cm.
- CUSTOM TRAFFIC CONTROL SIGNAGE**
 - 30: WELCOME TO [REDACTED]. CUSTOM SIGNAGE, 90 cm DIA. LETTERING ON WHITE REFLECTIVE BACKGROUND 120 X 90 cm.
 - 31: ONE-WAY. CUSTOM SIGNAGE, 90 cm BLACK LETTERING ON WHITE REFLECTIVE BACKGROUND 120 X 70 cm.
 - 32: NO PARKING. CUSTOM SIGNAGE, 90 cm BLACK LETTERING ON WHITE REFLECTIVE BACKGROUND 120 X 30 cm.
 - 33: NO PARKING. CUSTOM SIGNAGE, 10 cm BLACK LETTERING ON WHITE REFLECTIVE BACKGROUND 120 X 30 cm.
 - 34: NO PARKING. CUSTOM SIGNAGE, 10 cm BLACK LETTERING ON WHITE REFLECTIVE BACKGROUND 120 X 30 cm.
 - 35: NO PARKING. CUSTOM SIGNAGE, 10 cm BLACK LETTERING ON WHITE REFLECTIVE BACKGROUND 120 X 30 cm.
 - 36: NO PARKING. CUSTOM SIGNAGE, 10 cm BLACK LETTERING ON WHITE REFLECTIVE BACKGROUND 120 X 30 cm.
 - 37: NO PARKING. CUSTOM SIGNAGE, 10 cm BLACK LETTERING ON WHITE REFLECTIVE BACKGROUND 120 X 30 cm.
 - 38: NO PARKING. CUSTOM SIGNAGE, 10 cm BLACK LETTERING ON WHITE REFLECTIVE BACKGROUND 120 X 30 cm.
 - 39: NO PARKING. CUSTOM SIGNAGE, 90 cm BLACK LETTERING ON WHITE REFLECTIVE BACKGROUND 120 X 40 cm.
 - 40: NO PARKING. CUSTOM SIGNAGE, 90 cm BLACK LETTERING ON WHITE REFLECTIVE BACKGROUND 120 X 40 cm.
 - 41: VISITOR & EMPLOYEE ENTRANCE.

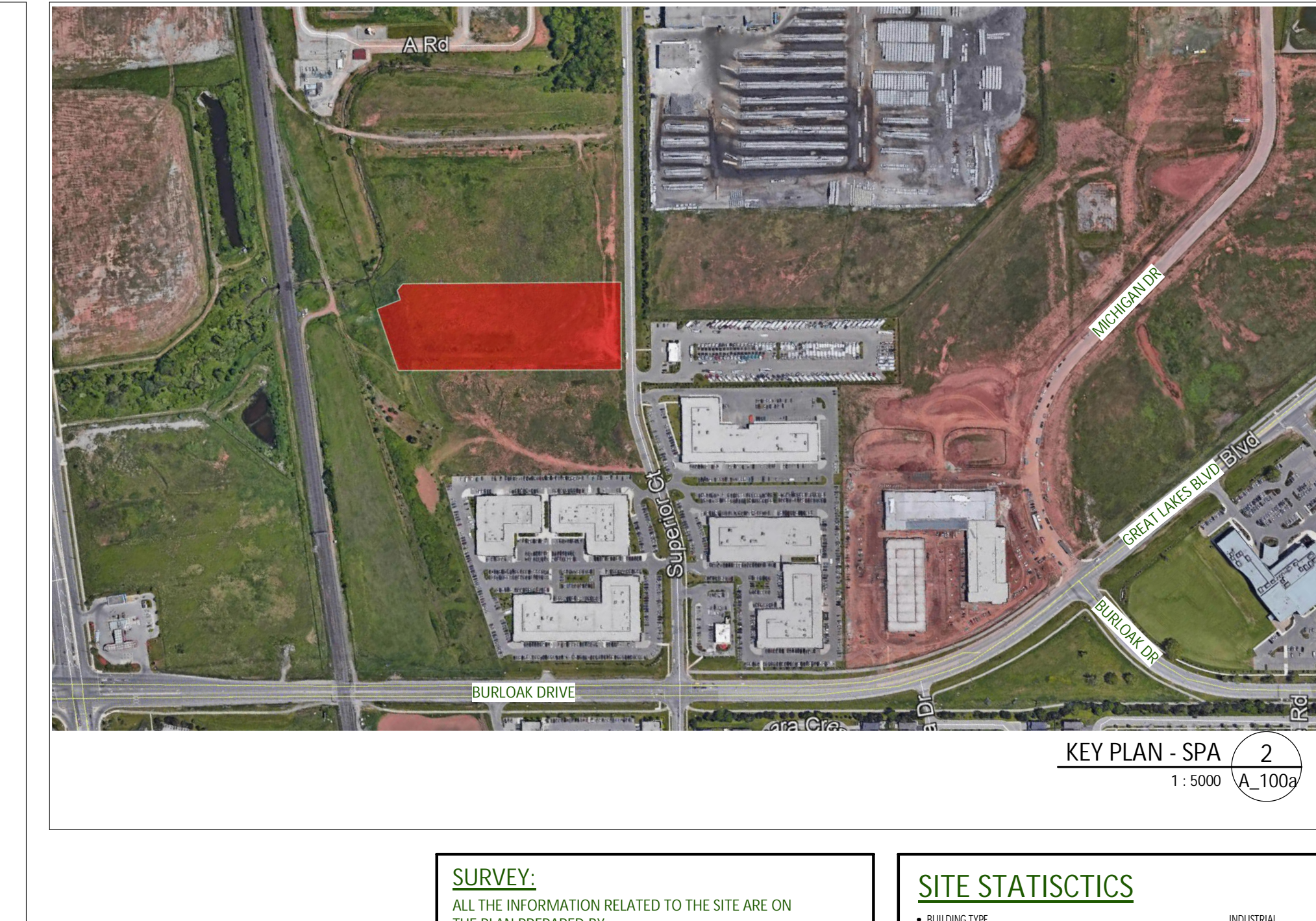
Name of Project: ACS Superior GRF
Location: 100 Lakeshore Blvd. Unit 205 Mississauga, ON L4X 1L4
Date: Aug 04, 2021

Building Code Version	Building Code Reference ¹
3.00	Building Code Version: 0_Reg 2021-2 Last Amendment: 0_Reg 1913-4
3.01	Project Type: 3.12.1(1) Description: Refrigerated warehouse with automated systems
3.02	Major Occupancy Classification: E-2 Refrigerated warehouse with automated systems
3.03	Superintended Major Occupancies: 322.7
3.04	Building Area (m²): Existing: 4,806.8; New: 4,806.8; Total: 9,613.6

3.05	Gross Area (m²)	Description		Existing	New	Total	1,141.2
		Refrigerated Warehouse		5,817.7	5,817.7	11,635.4	
		Refrigerated Dock		1,995.0	1,995.0	3,990.0	
		Front Offices/Mech Rooms		1,102.2	1,102.2	2,204.4	
		Back Staff Rooms/Offices/Storage		306.3	306.3	612.6	
		Total		9,221.2	9,221.2	18,442.4	

3.16	Importance Category	Description		Existing	New	Total	3.2.1.1
		Low	High	Low	High	Low	
3.17	Occupant Load	Description		Existing	New	Total	3.2.1.1
		Warehouse		70	70	140	
		Offices		10	10	20	

3.21	Spatial Separation	Description		Existing	New	Total	3.2.3
		Low	High	Low	High	Low	
		Warehouse		20	20	40	
		Offices		10	10	20	



3.06	Barrier-free Design	Description		Existing	New	Total	3.2.1.1(1)(b)
		Yes	No	Yes	No	Yes	
3.07	Barrier-free Design	Yes	No	Yes	No	Yes	No

3.10	Required Fire Resistance Ratings	Description		Existing	New	Total	3.2.2.8, 3.2.3.4
		Structural Assembly	Roof Deck	Existing	New	Existing	
		Structural Assembly	Roof Deck				

3.11	Sprocket System	Description		Existing	New	Total	3.2.1.8, 3.2.1.7
		Required	Not Required	Required	Not Required	Required	
		Required	Not Required	Required	Not Required	Required	Not Required

3.12	Shandage System	Description		Existing	New	Total	3.2.9
		Required	Not Required	Required	Not Required	Required	
		Required	Not Required	Required	Not Required	Required	Not Required

3.13	Fire Alarm System	Description		Existing	New	Total	3.2.4
		Required	Not Required	Required	Not Required	Required	
		Required	Not Required	Required	Not Required	Required	Not Required

1:500

SITE PLAN

1:500

SITE PLAN

1:500

3.14	Water Service / Supply is Adequate	Description		Existing	New	Total	3.2.2.8, 3.2.1.4
		Yes	No	Yes	No	Yes	
		Yes	No	Yes	No	Yes	No

3.15	Construction Type	Description		Existing	New	Total	3.2.2.8, 3.2.1.4
		Non-combustible	Combustible	Non-combustible	Combustible	Non-combustible	
		Non-combustible	Combustible	Non-combustible	Combustible	Non-combustible	Combustible

1:500

No.	Date	Revision	By
3	2021-08-16	RE ISSUED FOR SPA	YK
2	2021-08-11	ISSUED FOR PLAN REVIEW	YK
1	2021-08-06	ISSUED FOR COORDINATION	YK
0	2021-08-04	ISSUED FOR COORDINATION	YK

APPROVED
GOLD STORAGE INC.

ACS SUPERIOR GRF
Address/ Adresse
SUPERIOR CT, OAKVILLE ONTARIO

Ondré des archives
A-6048
FERNANDO LOZANO
ARCHITECTE
M. Québec

ARCHITECTURE

SITE PLAN

DRAWN BY: J.D.J. CHECKED BY: Y.K.

SCALE: As indicated

FIG. 21047

A_100a R3