



REAR-LANE ELEVATION
3-STOREY DUAL-FRONTAGE TOWNS

TYPE 'A/E'



FRONT ELEVATION 'A'
3-STOREY DUAL-FRONTAGE TOWNS

TYPE 'A/E'

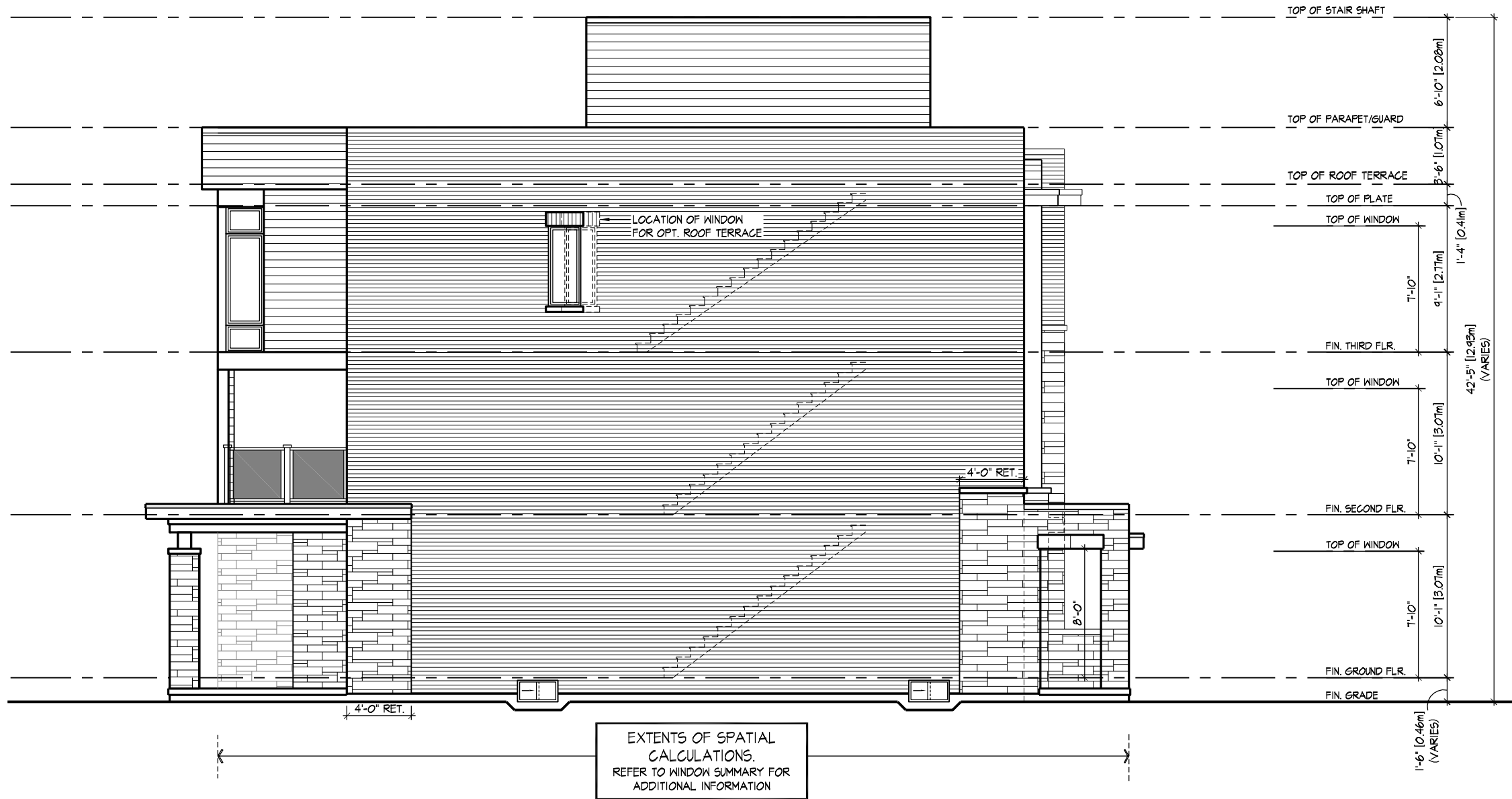


FRONT ELEVATION 'B'
3-STOREY DUAL-FRONTAGE TOWNS

TYPE 'A/E'

DCR00000 | FRIDAY 9/23/21 12:32 PM | K:\PROJECTS\2021\221098-FERMEDESIGNTOWNS\21088DT_BLOCKS.DWG

SPATIAL CALCULATION			
PER O.B.C. TABLE 9.10.15.4			
LEFT SIDE ELEV.			
EXPOSING BUILDING	1804.37	S.F.	
FACE AREA	167.63	S.M.	
PORTION WALL AREA	1804.37	S.F.	
	167.63	S.M.	
LIMITING DISTANCE	1.5 m		
MAX. % OPENINGS	7	%	
QUAN	WIDTH	DEPTH	WINDOW / DOOR FRAME SIZE (S.F.)
1	24"	60"	7.78
1	60"	68"	24.89
1	28"	68"	10.67
2	28"	20"	5.33
2	30"	16"	4.33
0	0"	0"	0.00
0	ARCH	0.00	0.00
0	ARCH	0.00	0.00
0	ARCH	0.00	0.00
OPENINGS ALLOWED	126.31	S.F.	
OPENINGS PROVIDED	53.00	S.F.	
ADDITIONAL NOTES			
GLAZED AREA CALCULATED W/ FRAME SIZE MINUS 2" AROUND ENTIRE PERIMETER			



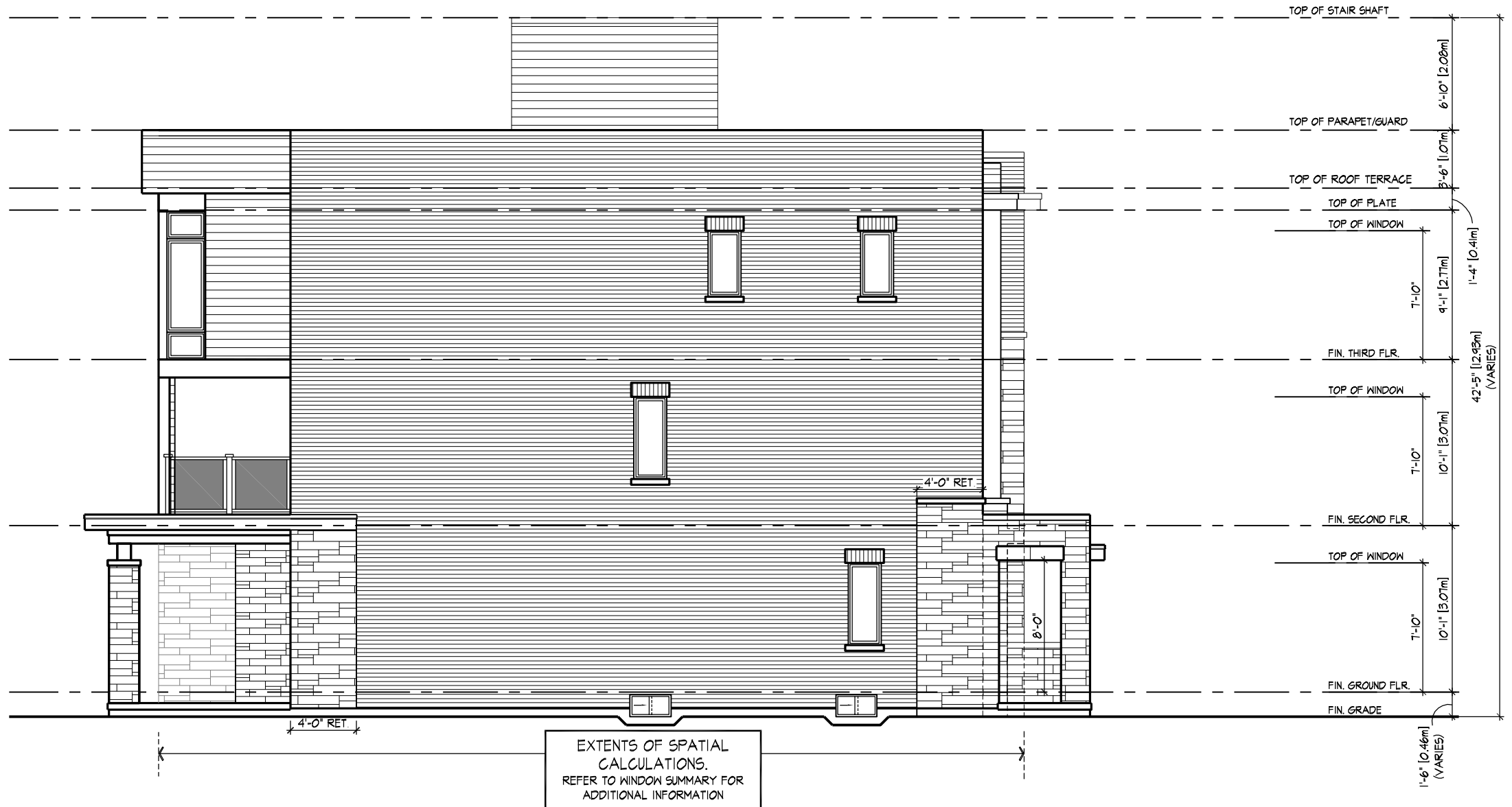
UNIT A1801

LEFT SIDE ELEVATION 'B3' - END CONDITION
3-STOREY DUAL-FRONTAGE TOWNS

TYPE 'A'

DCR00000 | FRIDAY 02/23/2021 01:32 PM | K:\PROJECTS\2021\221098-FERNIDESE\TOWNS\21098DT_BLOCKS.DWG

SPATIAL CALCULATION			
PER O.B.C. TABLE 9.10.15.4			
LEFT SIDE ELEV.			
EXPOSING BUILDING	1801.54	S.F.	
FACE AREA	167.37	S.M.	
PORTION WALL AREA	1801.54	S.F.	
	167.37	S.M.	
LIMITING DISTANCE	1.5 m		
MAX. % OPENINGS	7	%	
QUAN	WIDTH	DEPTH	WINDOW / DOOR FRAME SIZE (S.F.)
2	24"	48"	12.22
1	28"	68"	10.67
2	28"	20"	5.33
2	30"	16"	4.33
2	24"	60"	15.56
0	ARCH	0.00	0.00
0	ARCH	0.00	0.00
0	ARCH	0.00	0.00
OPENINGS ALLOWED	126.11	S.F.	
OPENINGS PROVIDED	48.11	S.F.	
ADDITIONAL NOTES			
GLAZED AREA CALCULATED W/ FRAME SIZE MINUS 2" AROUND ENTIRE PERIMETER			



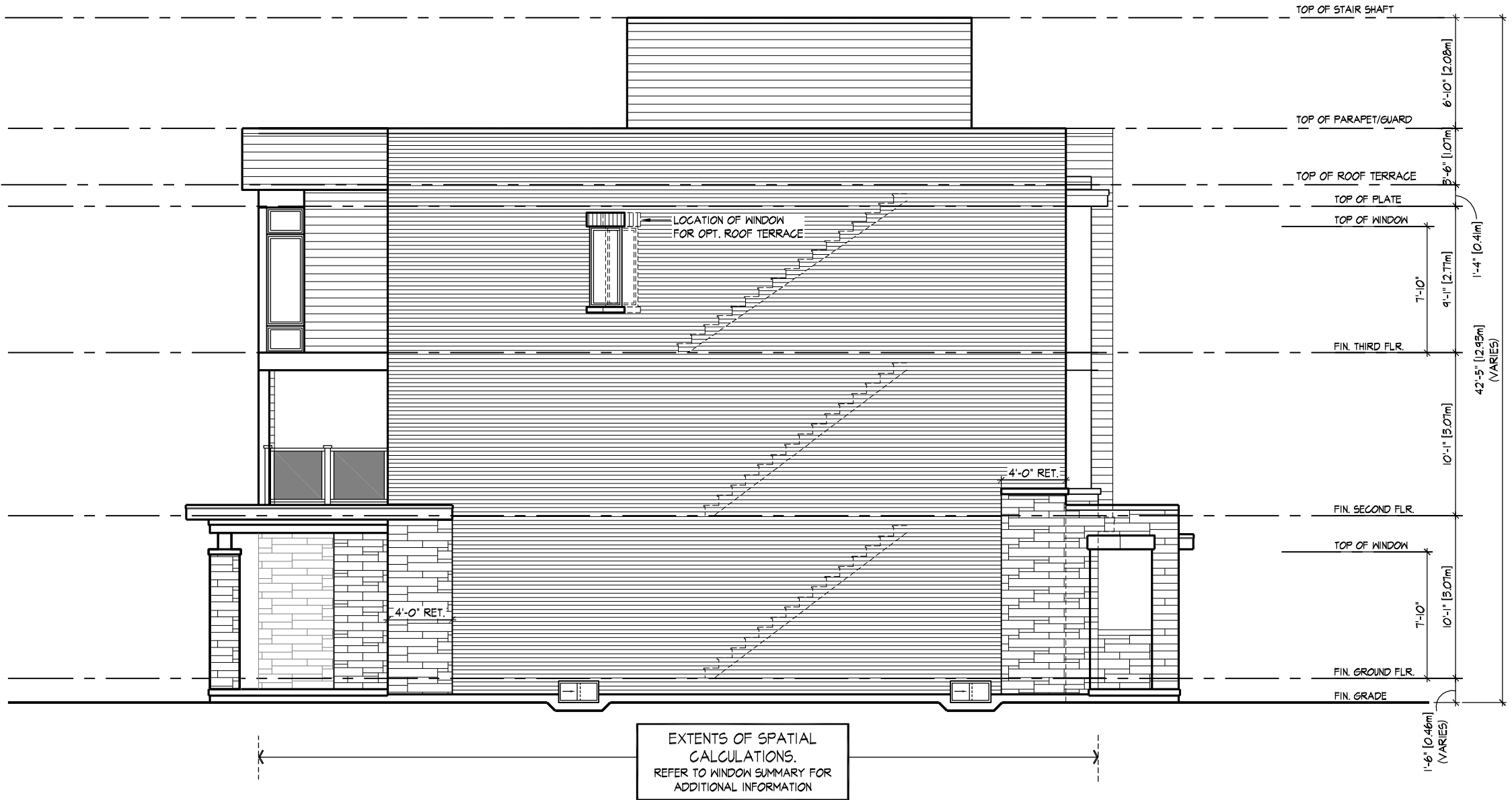
UNIT A1802

LEFT SIDE ELEVATION 'B3' - END CONDITION
3-STOREY DUAL-FRONTAGE TOWNS

TYPE 'A'

DCR0000 | FR JUN 02 01:32 PM | K:\PROJECTS\2021\221098-FERNSIDE\TOWNS\21088DT_BLOCKS.DWG

SPATIAL CALCULATION			
PER O.B.C. TABLE 9,10,15,4			
LEFT SIDE ELEV.			
EXPOSING BUILDING	1811.31	S.F.	
FACE AREA	168.28	S.M.	
PORTION WALL AREA	1811.31	S.F.	
	168.28	S.M.	
LIMITING DISTANCE	1.5 m		
MAX. % OPENINGS	7	%	
QUAN	WIDTH	DEPTH	WINDOW / DOOR FRAME SIZE (S.F.)
1	24"	60"	7.78
1	28"	68"	10.67
2	28"	20"	5.33
2	30"	16"	4.33
0	0"	0"	0.00
0	ARCH	0.00	0.00
0	ARCH	0.00	0.00
0	ARCH	0.00	0.00
OPENINGS ALLOWED	126.79	S.F.	
OPENINGS PROVIDED	28.11	S.F.	
ADDITIONAL NOTES			
GLAZED AREA CALCULATED W/ FRAME SIZE MINUS 2" AROUND ENTIRE PERIMETER			

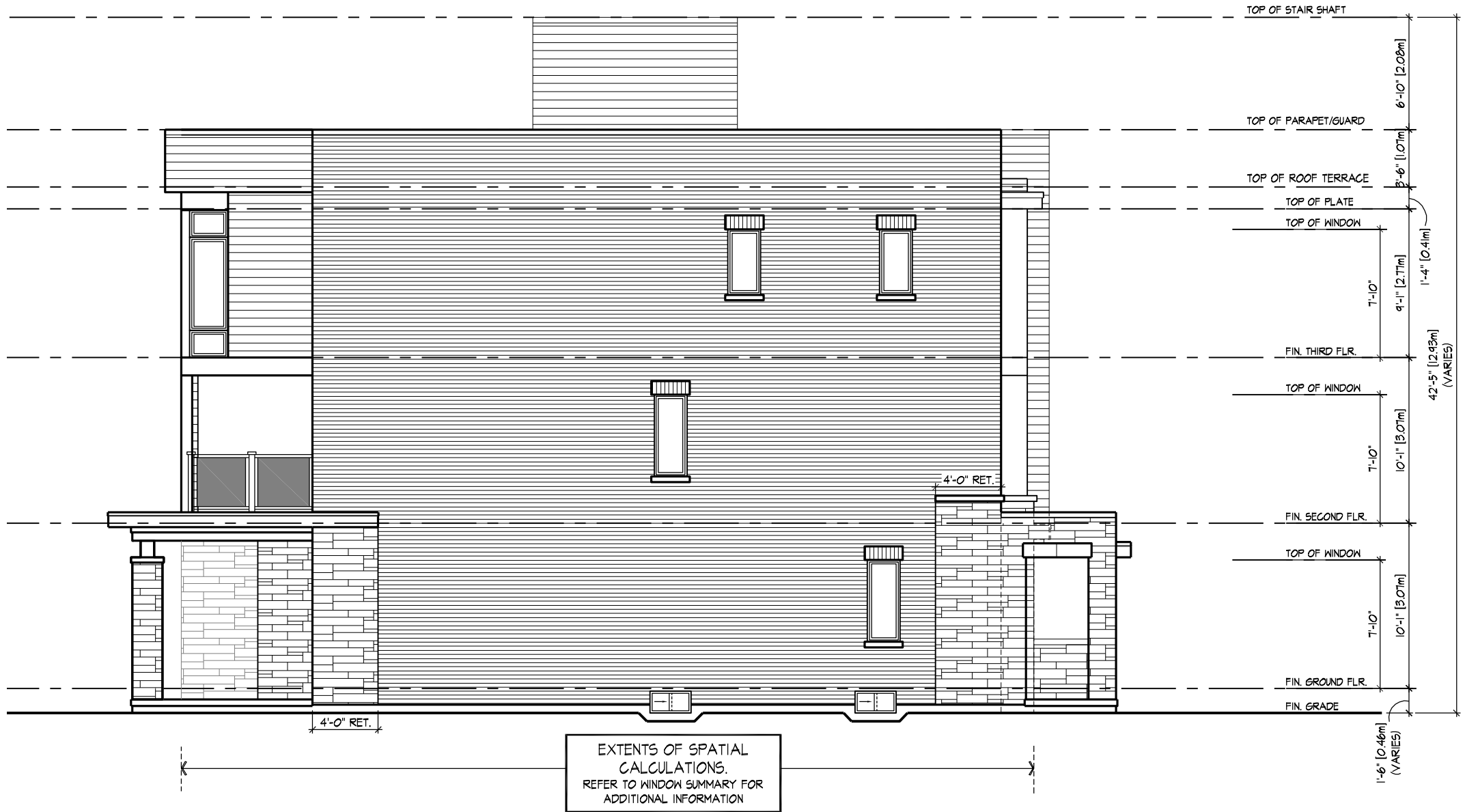


UNIT A1801
LEFT SIDE ELEVATION 'A' - END CONDITION
3-STOREY DUAL-FRONTAGE TOWNS

TYPE 'A'

DCR00000 | FRI JUN 02 01:32 PM | K:\PROJECTS\2021\221098 FERNEDESIGNTOWNS\221098DT_BLOCKS.DWG

SPATIAL CALCULATION			
PER O.B.C. TABLE 9.10.15.4			
LEFT SIDE ELEV.			
EXPOSING BUILDING	1810.41	S.F.	
FACE AREA	168.19	S.M.	
PORTION WALL AREA	1810.41	S.F.	
	168.19	S.M.	
LIMITING DISTANCE	1.5 m		
MAX. % OPENINGS	7 %		
QUAN	WIDTH	DEPTH	WINDOW / DOOR FRAME SIZE (S.F.)
2	24"	48"	12.22
1	28"	68"	10.67
2	28"	20"	5.33
2	30"	16"	4.33
2	24"	60"	15.56
0	0"	0"	0.00
0	ARCH	0.00	0.00
0	ARCH	0.00	0.00
0	ARCH	0.00	0.00
OPENINGS ALLOWED	126.73	S.F.	
OPENINGS PROVIDED	48.11	S.F.	
ADDITIONAL NOTES			
GLAZED AREA CALCULATED W/ FRAME SIZE MINUS 2" AROUND ENTIRE PERIMETER			

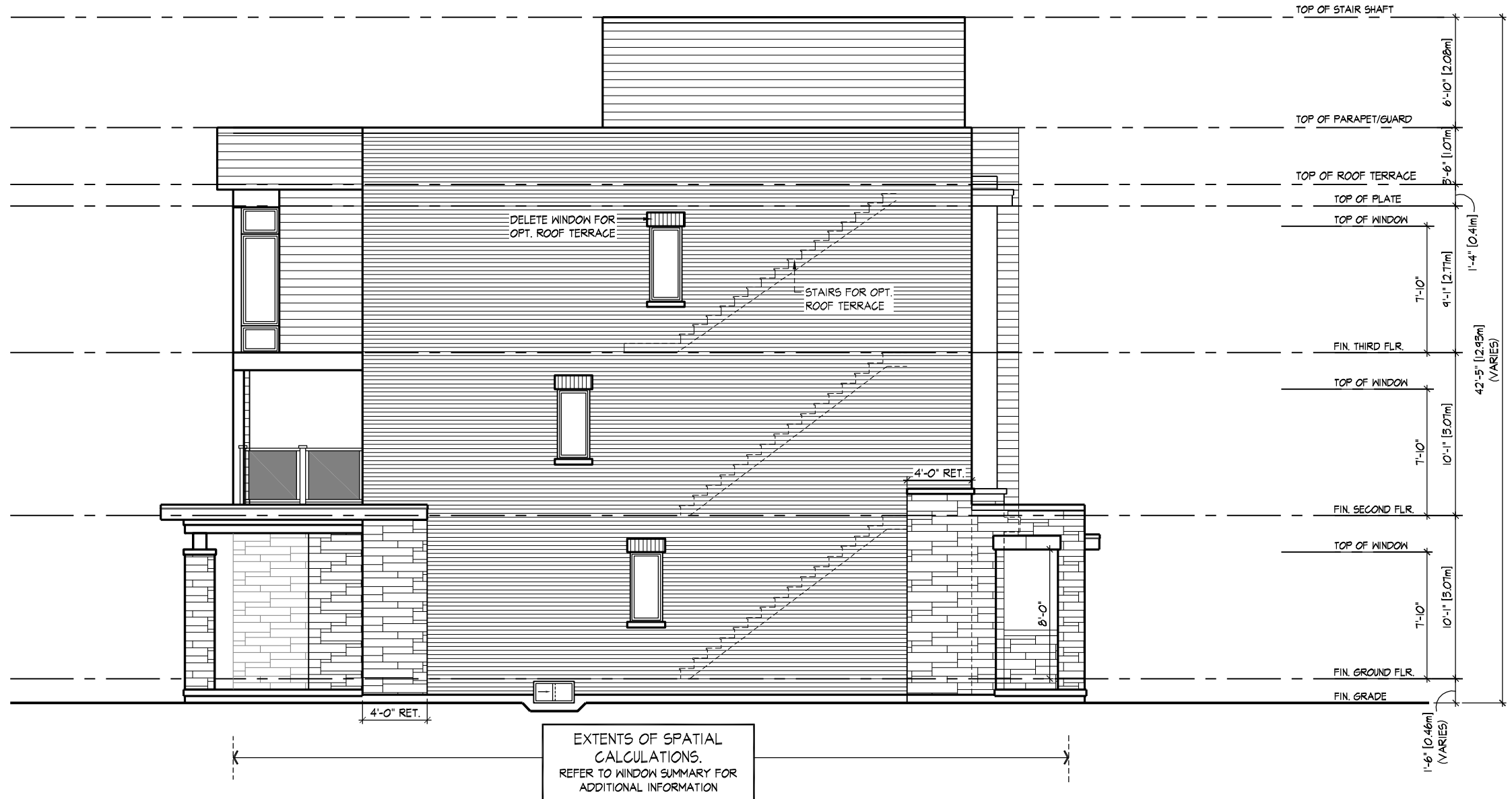


UNIT A1802
 LEFT SIDE ELEVATION 'A' - END CONDITION
 3-STOREY DUAL-FRONTAGE TOWNS

TYPE 'A'

DCR0000 | FR JUN 02 01:32 PM | K:\PROJECTS\2021\221098\PERMDESIGN\TOWNS\210801T_BLOCKS.DWG

SPATIAL CALCULATION			
PER O.B.C. TABLE 9.10.15.4			
LEFT SIDE ELEV.			
EXPOSING BUILDING FACE AREA	1808.58	S.F.	
PORTION WALL AREA	168.02	S.M.	
PORTION WALL AREA	1808.58	S.F.	
PORTION WALL AREA	168.02	S.M.	
LIMITING DISTANCE	1.5 m		
MAX. % OPENINGS	7	%	
QUAN.	WIDTH	DEPTH	WINDOW / DOOR FRAME SIZE (S.F.)
1	28"	68"	10.67
2	28"	20"	5.33
1	30"	16"	2.17
2	24"	52"	13.33
1	24"	56"	7.22
0	ARCH	0.00	0.00
0	ARCH	0.00	0.00
0	ARCH	0.00	0.00
OPENINGS ALLOWED	126.60	S.F.	
OPENINGS PROVIDED	38.72	S.F.	
ADDITIONAL NOTES			
GLAZED AREA CALCULATED W/ FRAME SIZE MINUS 2" AROUND ENTIRE PERIMETER			

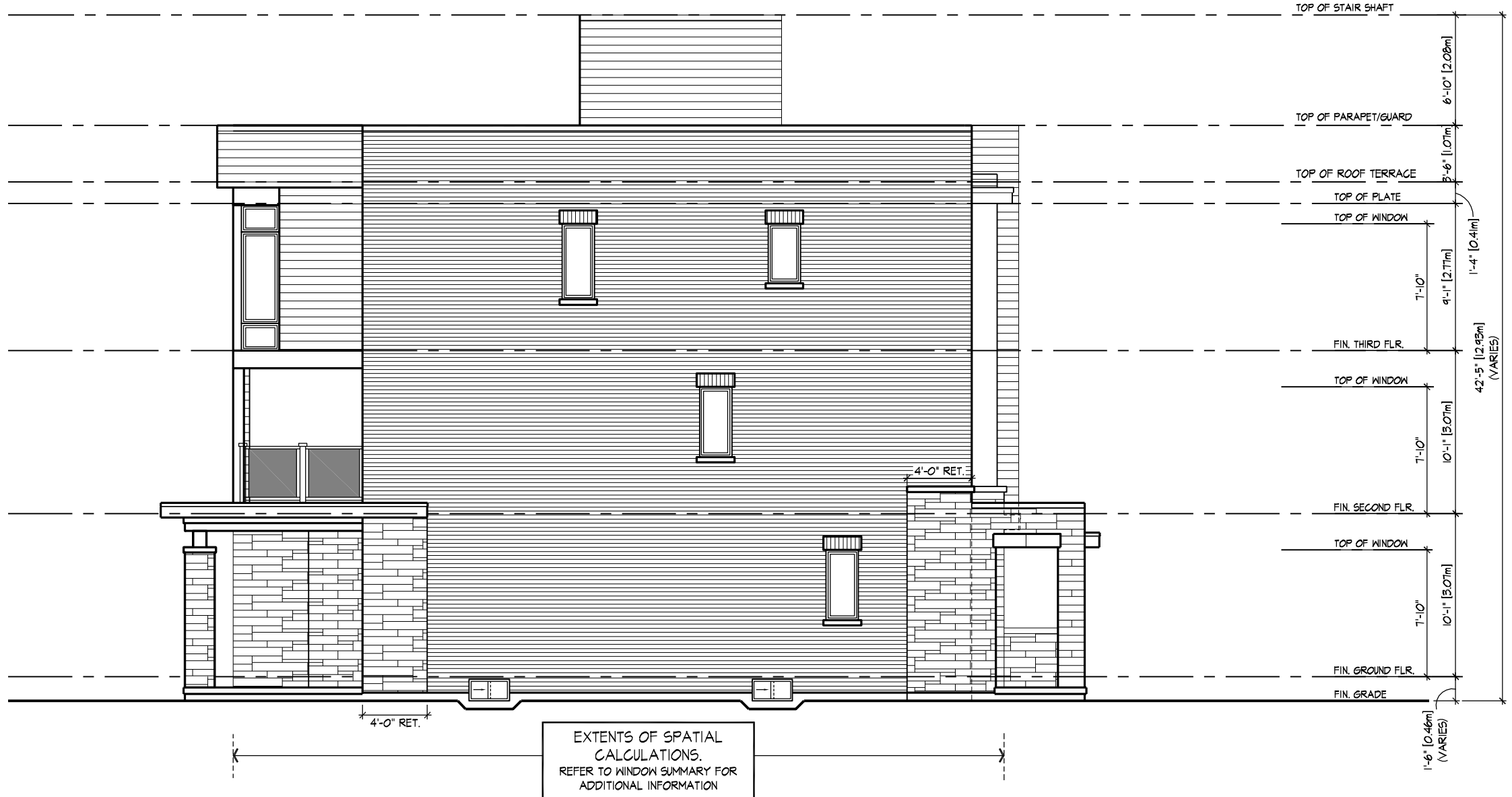


UNIT E1801
LEFT SIDE ELEVATION 'A' - END CONDITION
3-STOREY DUAL-FRONTAGE TOWNS

TYPE E1

DCR000001 | FR JUN 9 2021 01:32 PM | K:\PROJECTS\2021\221098\TOWNS\211802T_BLOCKS.DWG

SPATIAL CALCULATION			
PER O.B.C. TABLE 9.10.15.4			
LEFT SIDE ELEV.			
EXPOSING BUILDING	1742.53	S.F.	
FACE AREA	161.89	S.M.	
PORTION WALL AREA	1742.53	S.F.	
	161.89	S.M.	
LIMITING DISTANCE	1.5 m		
MAX. % OPENINGS	7	%	
QUAN.	WIDTH	DEPTH	
	WINDOW / DOOR FRAME SIZE (S.F.)		
1	28"	68"	10.67
2	28"	20"	5.33
2	30"	16"	4.33
2	24"	52"	13.33
1	24"	56"	7.22
1	24"	44"	5.56
0	ARCH	0.00	0.00
0	ARCH	0.00	0.00
0	ARCH	0.00	0.00
OPENINGS ALLOWED	121.98	S.F.	
OPENINGS PROVIDED	46.44	S.F.	
ADDITIONAL NOTES			
GLAZED AREA CALCULATED W/ FRAME SIZE MINUS 2" AROUND ENTIRE PERIMETER			

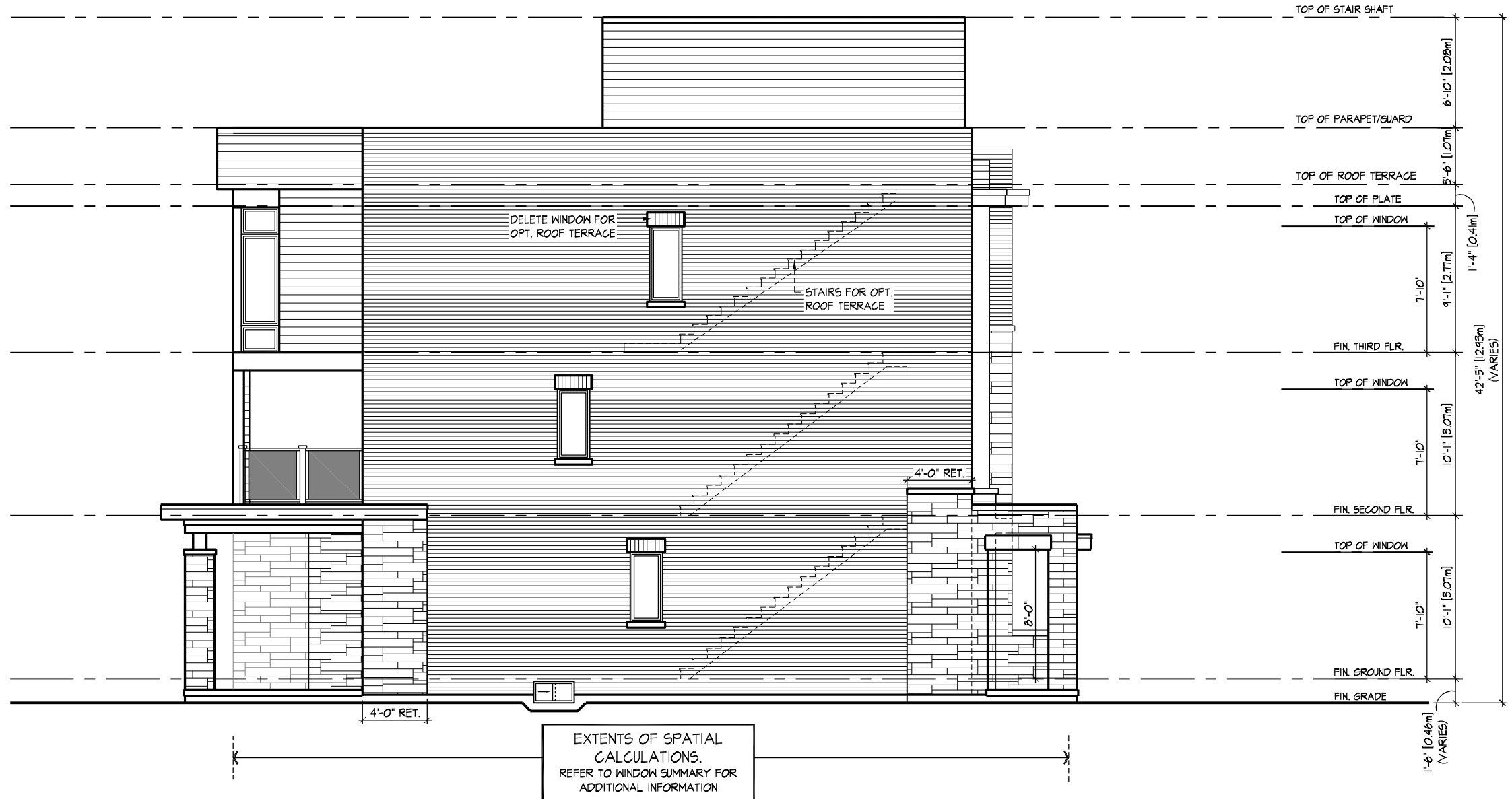


UNIT E1802
LEFT SIDE ELEVATION 'A' - END CONDITION
3-STOREY DUAL-FRONTAGE TOWNS

TYPE 'E'

DCR0000 | FR JUN 02 01:32 PM | K:\PROJECTS\2021\221098\TOWNS\21098DT_BLOCKS.DWG

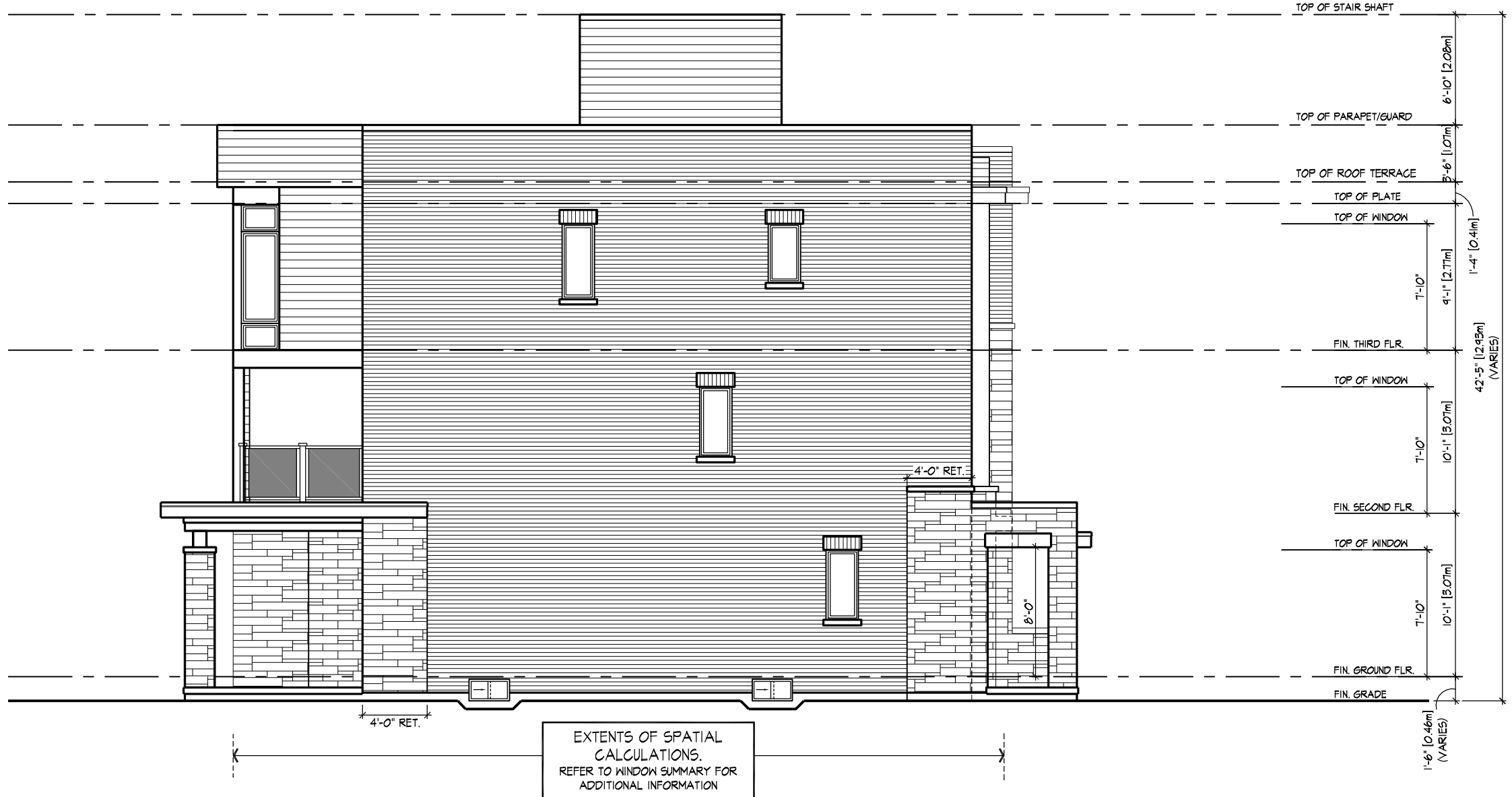
SPATIAL CALCULATION			
PER O.B.C. TABLE 9.10.15.4			
LEFT SIDE ELEV.			
EXPOSING BUILDING FACE AREA	1801.65	S.F.	
PORTION WALL AREA	167.38	S.M.	
PORTION WALL AREA	1801.65	S.F.	
PORTION WALL AREA	167.38	S.M.	
LIMITING DISTANCE	1.5 m		
MAX. % OPENINGS	7	%	
QUAN.	WIDTH	DEPTH	WINDOW / DOOR FRAME SIZE (S.F.)
1	28"	68"	10.67
2	28"	20"	5.33
1	30"	16"	2.17
2	24"	52"	13.33
1	24"	56"	7.22
0	ARCH	0.00	0.00
0	ARCH	0.00	0.00
0	ARCH	0.00	0.00
OPENINGS ALLOWED	126.12	S.F.	
OPENINGS PROVIDED	38.72	S.F.	
ADDITIONAL NOTES			
GLAZED AREA CALCULATED W/ FRAME SIZE MINUS 2" AROUND ENTIRE PERIMETER			



UNIT E1801
LEFT SIDE ELEVATION 'B3' - END CONDITION
3-STOREY DUAL-FRONTAGE TOWNS

TYPE E1

SPATIAL CALCULATION			
PER O.B.C. TABLE 9.10.15.4			
LEFT SIDE ELEV.			
EXPOSING BUILDING FACE AREA	1733.89	S.F.	
PORTION WALL AREA	1733.89	S.F.	
LIMITING DISTANCE	1.5 m		
MAX. % OPENINGS	7	%	
QUAN.	WIDTH	DEPTH	
WINDOW / DOOR FRAME SIZE (S.F.)			
1	28"	68"	10.67
2	28"	20"	5.33
2	30"	16"	4.33
2	24"	52"	13.33
1	24"	56"	7.22
1	24"	44"	5.56
0	ARCH	0.00	0.00
0	ARCH	0.00	0.00
0	ARCH	0.00	0.00
OPENINGS ALLOWED	121.37	S.F.	
OPENINGS PROVIDED	46.44	S.F.	
ADDITIONAL NOTES			
GLAZED AREA CALCULATED W/ FRAME SIZE MINUS 2" AROUND ENTIRE PERIMETER			



UNIT E1802
 LEFT SIDE ELEVATION 'B3' - END CONDITION
 3-STOREY DUAL-FRONTAGE TOWNS

TYPE 'E'



UNIT A1802

UPGRADED LEFT SIDE ELEVATION 'B'
3-STOREY DUAL-FRONTAGE TOWNS

TYPE 'A'



UNIT A1802
 CORNER UPGRADE ELEVATION
 3-STOREY DUAL-FRONTAGE TOWNS

FRONT ELEVATION
 (FOR CORNER UPGRADE)

TYPE 'A'



UNIT E1802

UPGRADED LEFT SIDE ELEVATION 'B'
3-STOREY DUAL-FRONTAGE TOWNS

TYPE E1



UNIT E1802
 CORNER UPGRADE ELEVATION
 3-STOREY DUAL-FRONTAGE TOWNS

FRONT ELEVATION
 (FOR CORNER UPGRADE)

TYPE E1



FRONT ELEVATION 'A'
3-STOREY BACK-TO-BACK TOWNS

TYPE B

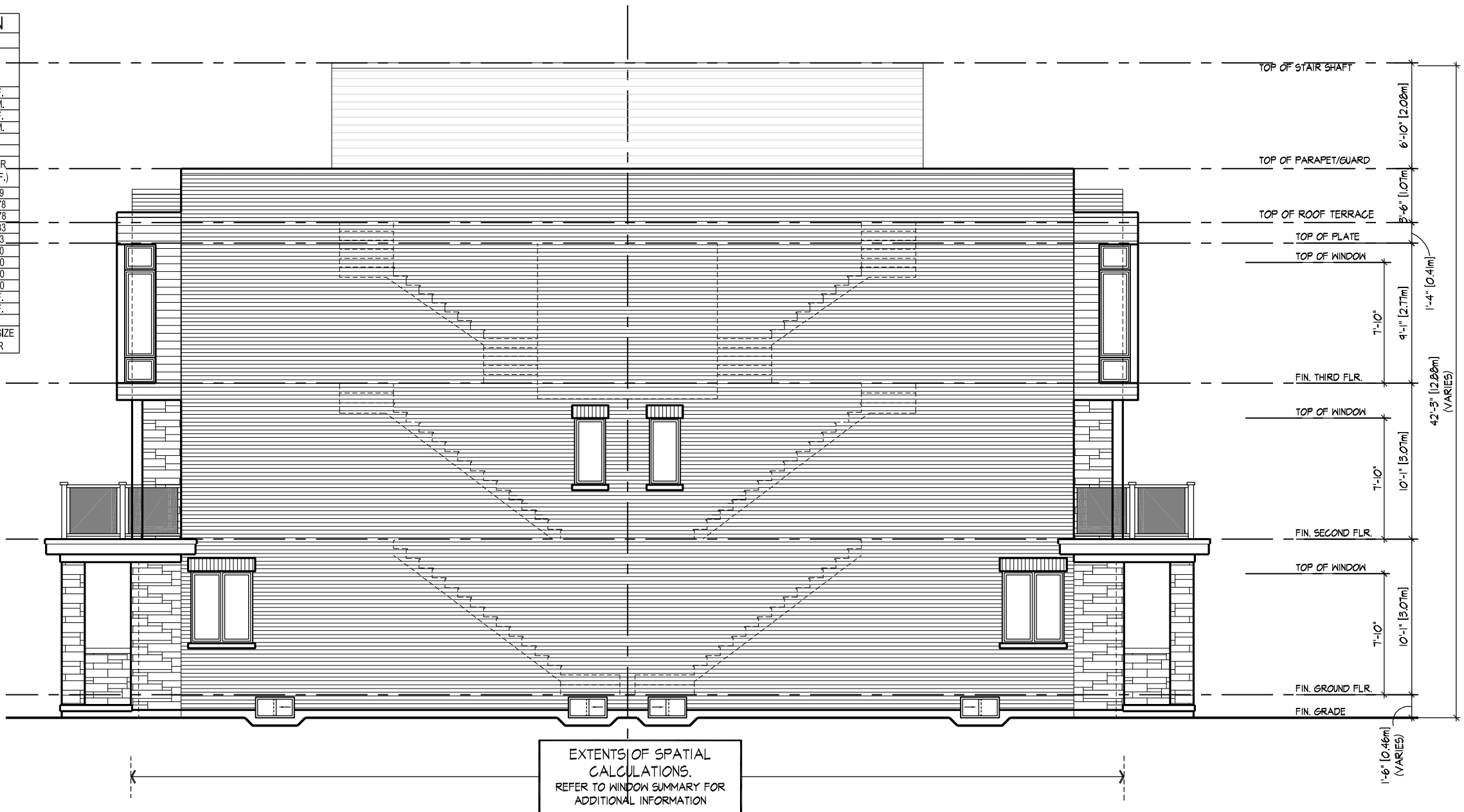


FRONT ELEVATION 'B'
3-STOREY BACK-TO-BACK TOWNS

TYPE B

DCR00000 | FR JUN 09 23 01:34 PM | K:\PROJECTS\2021\221098\FERMINDESIGNTOWNS\21088DT_BLOCKS.DWG

SPATIAL CALCULATION			
PER O.B.C. TABLE 9.10.15.4			
LEFT SIDE ELEV.			
EXPOSING BUILDING	2307.79	S.F.	
FACE AREA	214.40	S.M.	
PORTION WALL AREA	2307.79	S.F.	
	214.40	S.M.	
LIMITING DISTANCE	7	1.5 m	
MAX. % OPENINGS		%	
QUAN	WIDTH	DEPTH	WINDOW / DOOR FRAME SIZE (S.F.)
4	24"	20"	8.89
2	24"	68"	17.78
2	48"	56"	31.78
2	24"	52"	13.33
2	30"	16"	4.33
0	0"	0"	0.00
0	ARCH	0.00	0.00
0	ARCH	0.00	0.00
0	ARCH	0.00	0.00
OPENINGS ALLOWED	161.55	S.F.	
OPENINGS PROVIDED	76.11	S.F.	
ADDITIONAL NOTES			
GLAZED AREA CALCULATED W/ FRAME SIZE MINUS 2" AROUND ENTIRE PERIMETER			

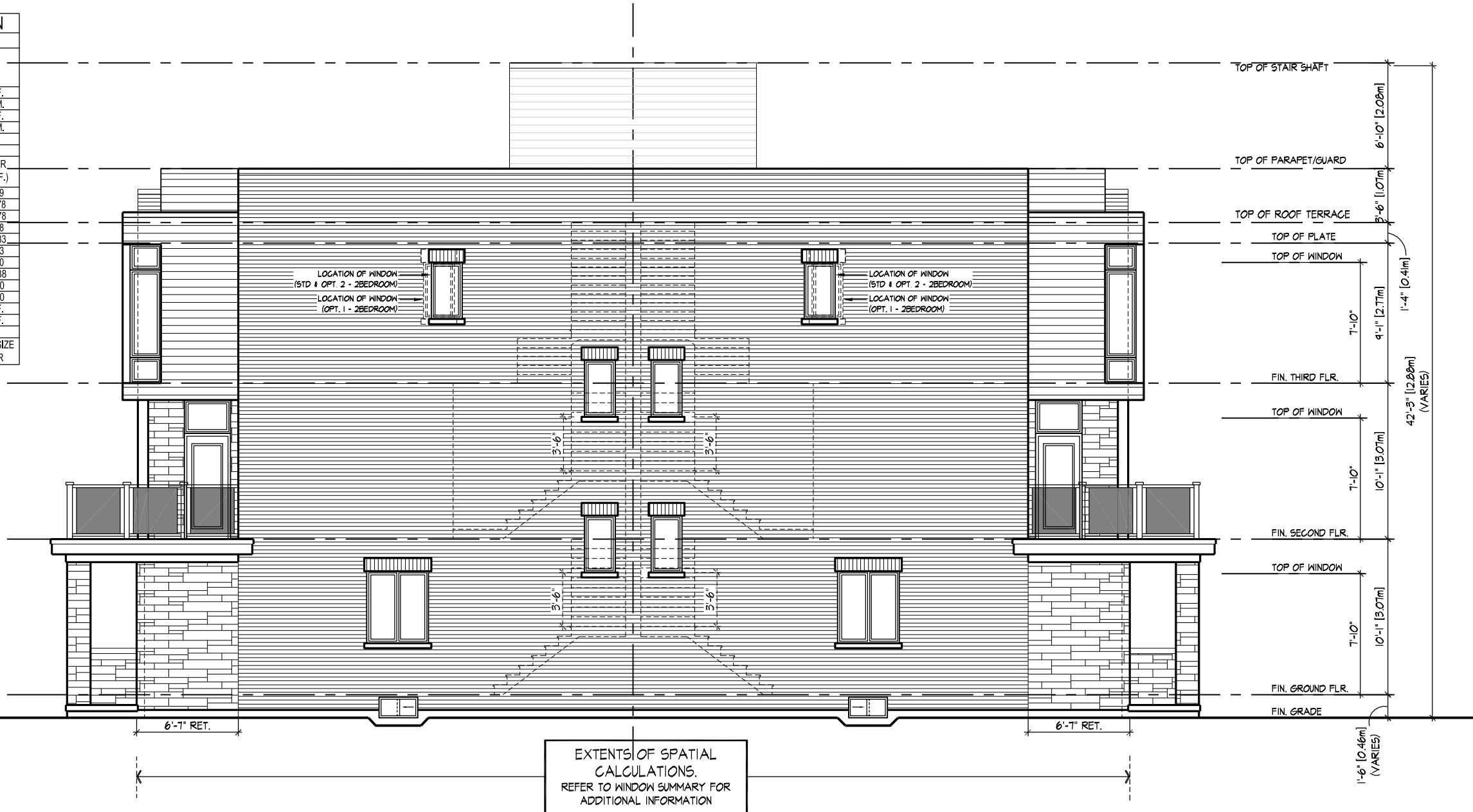


LEFT SIDE ELEVATION 'B3' - END CONDITION - B2101
3-STOREY BACK-TO-BACK TOWNS

TYPE 'B'

D:\PROJECTS\2021\221098\BURNHAMTHORPE\TOWNS\21098DT_BLOCKS.DWG

SPATIAL CALCULATION			
PER O.B.C. TABLE 9.10.15.4			
LEFT SIDE ELEV.			
EXPOSING BUILDING	2306.17	S.F.	
FACE AREA	214.25	S.M.	
PORTION WALL AREA	2306.17	S.F.	
	214.25	S.M.	
LIMITING DISTANCE	7	1.5 m	
MAX. % OPENINGS		%	
QUAN	WIDTH	DEPTH	WINDOW / DOOR FRAME SIZE (S.F.)
4	24"	20"	8.89
2	24"	68"	17.78
2	48"	56"	31.78
2	36"	26"	9.78
6	24"	44"	33.33
2	30"	16"	4.33
0	0"	0"	0.00
2	DOOR	9.19	18.38
0	ARCH	0.00	0.00
0	ARCH	0.00	0.00
OPENINGS ALLOWED	161.43	S.F.	
OPENINGS PROVIDED	124.27	S.F.	
ADDITIONAL NOTES			
GLAZED AREA CALCULATED W/ FRAME SIZE MINUS 2" AROUND ENTIRE PERIMETER			

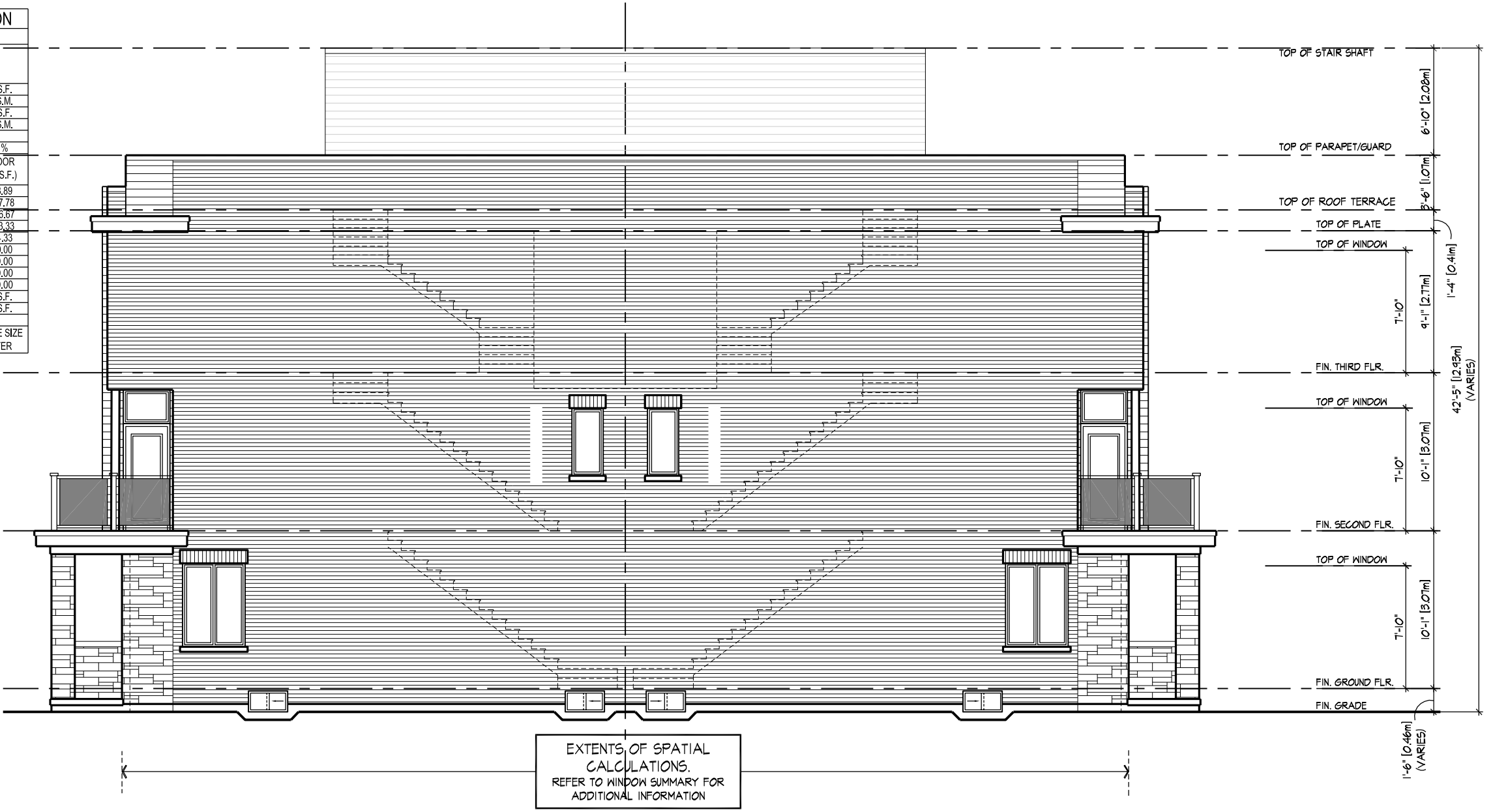


LEFT SIDE ELEVATION 'B3' - END CONDITION - B2102
3-STOREY BACK-TO-BACK TOWNS

TYPE 'B'

DCR00000 | FRI JUN 02 01:34 PM | K:\PROJECTS\2021\221098\FERMI\DESIGN\TOWNS\21098DT_BLOCKS.DWG

SPATIAL CALCULATION			
PER O.B.C. TABLE 9.10.15.4			
LEFT SIDE ELEVATION			
EXPOSING BUILDING FACE AREA	2353.78	S.F.	
	218.67	S.M.	
PORTION WALL AREA	2353.78	S.F.	
	218.67	S.M.	
LIMITING DISTANCE	1.5 m		
MAX. % OPENINGS	7	%	
QUAN.	WIDTH	DEPTH	WINDOW / DOOR FRAME SIZE (S.F.)
4	24"	20"	8.89
2	24"	68"	17.78
2	48"	64"	36.67
2	24"	52"	13.33
2	30"	16"	4.33
0	0"	0"	0.00
0	ARCH	0.00	0.00
0	ARCH	0.00	0.00
0	ARCH	0.00	0.00
OPENINGS ALLOWED	164.78	S.F.	
OPENINGS PROVIDED	81.00	S.F.	
ADDITIONAL NOTES			
GLAZED AREA CALCULATED W/ FRAME SIZE MINUS 2" AROUND ENTIRE PERIMETER			



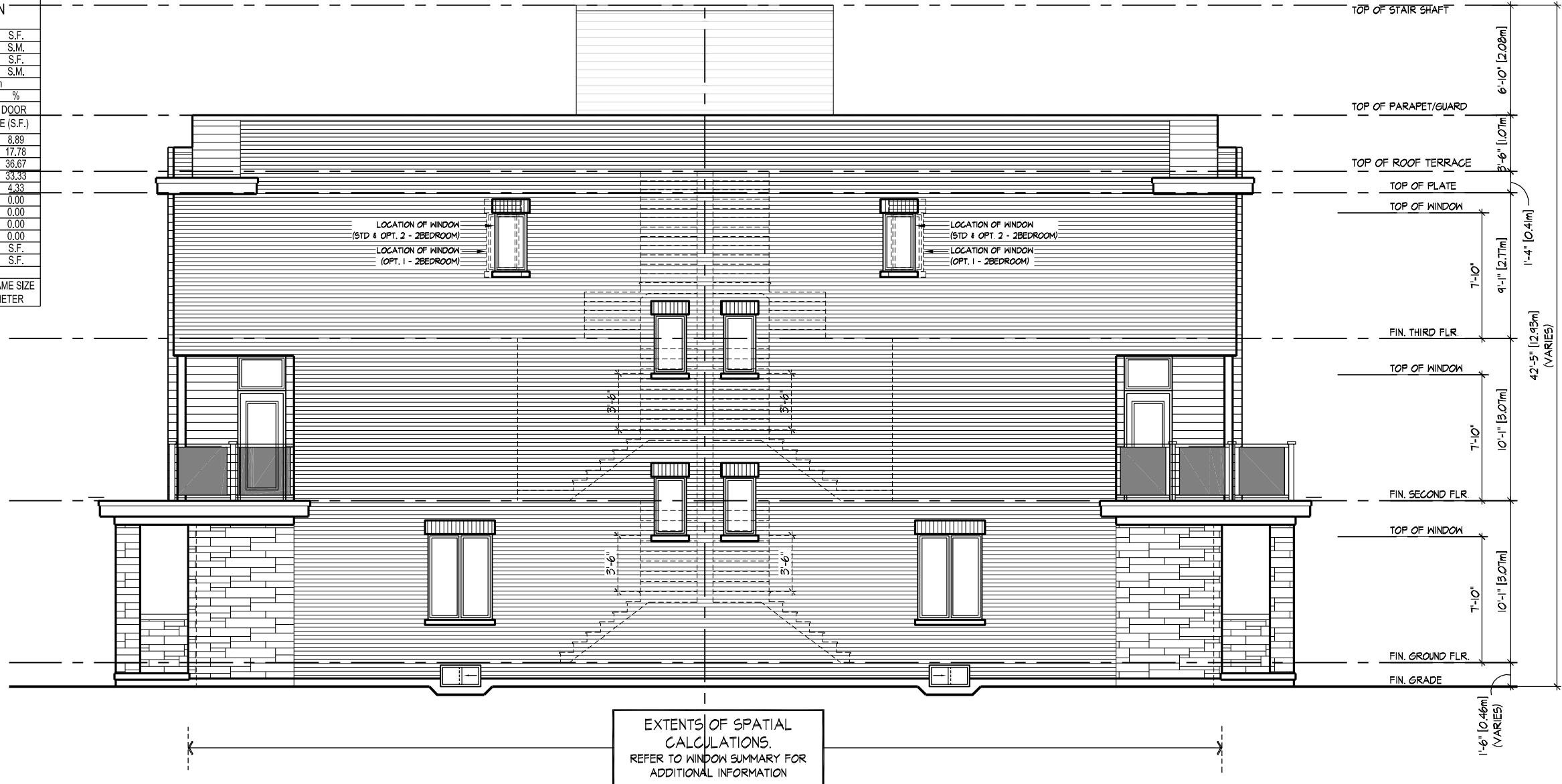
EXTENTS OF SPATIAL CALCULATIONS. REFER TO WINDOW SUMMARY FOR ADDITIONAL INFORMATION

LEFT SIDE ELEVATION 'A1'- END CONDITION - B2101
3-STOREY BACK-TO-BACK TOWNS

TYPE 'B'

D:\PROJECTS\2021\221098\BURNHAMTHORPE\TOWNS\21098DT_BLOCKS.DWG

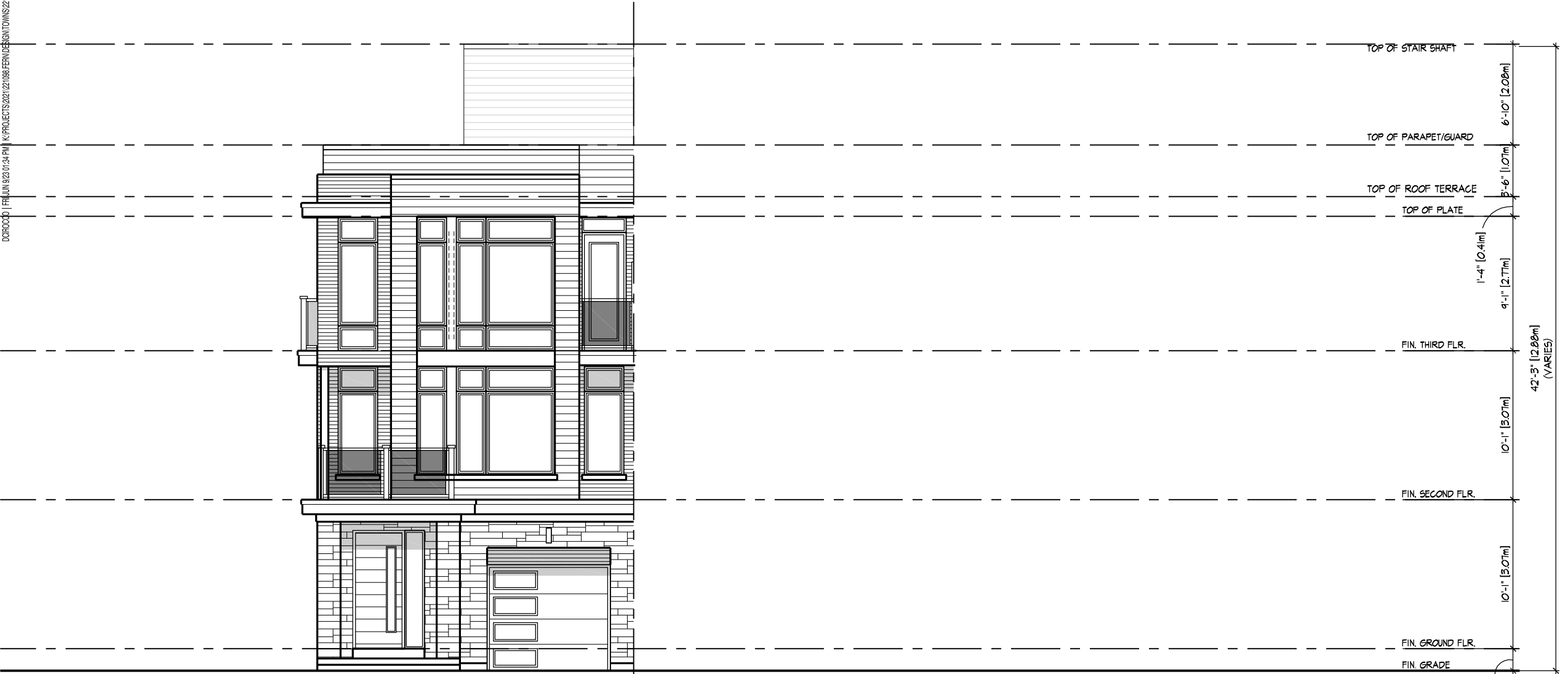
SPATIAL CALCULATION			
PER O.B.C. TABLE 9.10.15.4			
LEFT SIDE ELEVATION			
EXPOSING BUILDING	2350.36	S.F.	
FACE AREA	218.36	S.M.	
PORTION WALL AREA	2350.36	S.F.	
	218.36	S.M.	
LIMITING DISTANCE	1.5 m		
MAX. % OPENINGS	7	%	
QUAN.	WIDTH	DEPTH	WINDOW / DOOR FRAME SIZE (S.F.)
4	24"	20"	8.89
2	24"	68"	17.78
2	48"	64"	36.67
6	24"	44"	33.33
2	30"	16"	4.33
0	0"	0"	0.00
0	ARCH	0.00	0.00
0	ARCH	0.00	0.00
0	ARCH	0.00	0.00
OPENINGS ALLOWED	164.53	S.F.	
OPENINGS PROVIDED	101.00	S.F.	
ADDITIONAL NOTES			
GLAZED AREA CALCULATED W/ FRAME SIZE MINUS 2" AROUND ENTIRE PERIMETER			



EXTENTS OF SPATIAL CALCULATIONS. REFER TO WINDOW SUMMARY FOR ADDITIONAL INFORMATION

LEFT SIDE ELEVATION 'A1' - END CONDITION - B2102
3-STOUREY BACK-TO-BACK TOWNS

TYPE 'B'



FRONT ELEVATION 'A'
(END UPGRADE) - B2103

3-STOREY BACK-TO-BACK TOWNS

TYPE 'B'



'A1' - END UPG.

'A1' - END UPG.

UPGRADED END ELEVATION - B2103
 3-STOREY BACK-TO-BACK TOWNS (END UPGRADE)

TYPE 'B'



FRONT ELEVATION 'B1'
(END UPGRADE) - B2103

3-STOREY BACK-TO-BACK TOWNS

TYPE 'B1'



'B1' - END UPG.

'B1' - END UPG.

UPGRADED END ELEVATION - B2103
 3-STOREY BACK-TO-BACK TOWNS (END UPGRADE)

TYPE 'B1'



FRONT ELEVATION 'A'
(CORNER UPGRADE) - B2103

FRONT ELEVATION 'B'
(CORNER UPGRADE) - B2103

TYPE 'B'

3-STOREY BACK-TO-BACK TOWNS



'B1' - CORNER UPG.

'A1' - CORNER UPG.

CORNER ELEVATION - B2103
 3-STOREY BACK-TO-BACK TOWNS (CORNER UPGRADE)

TYPE 'B1'