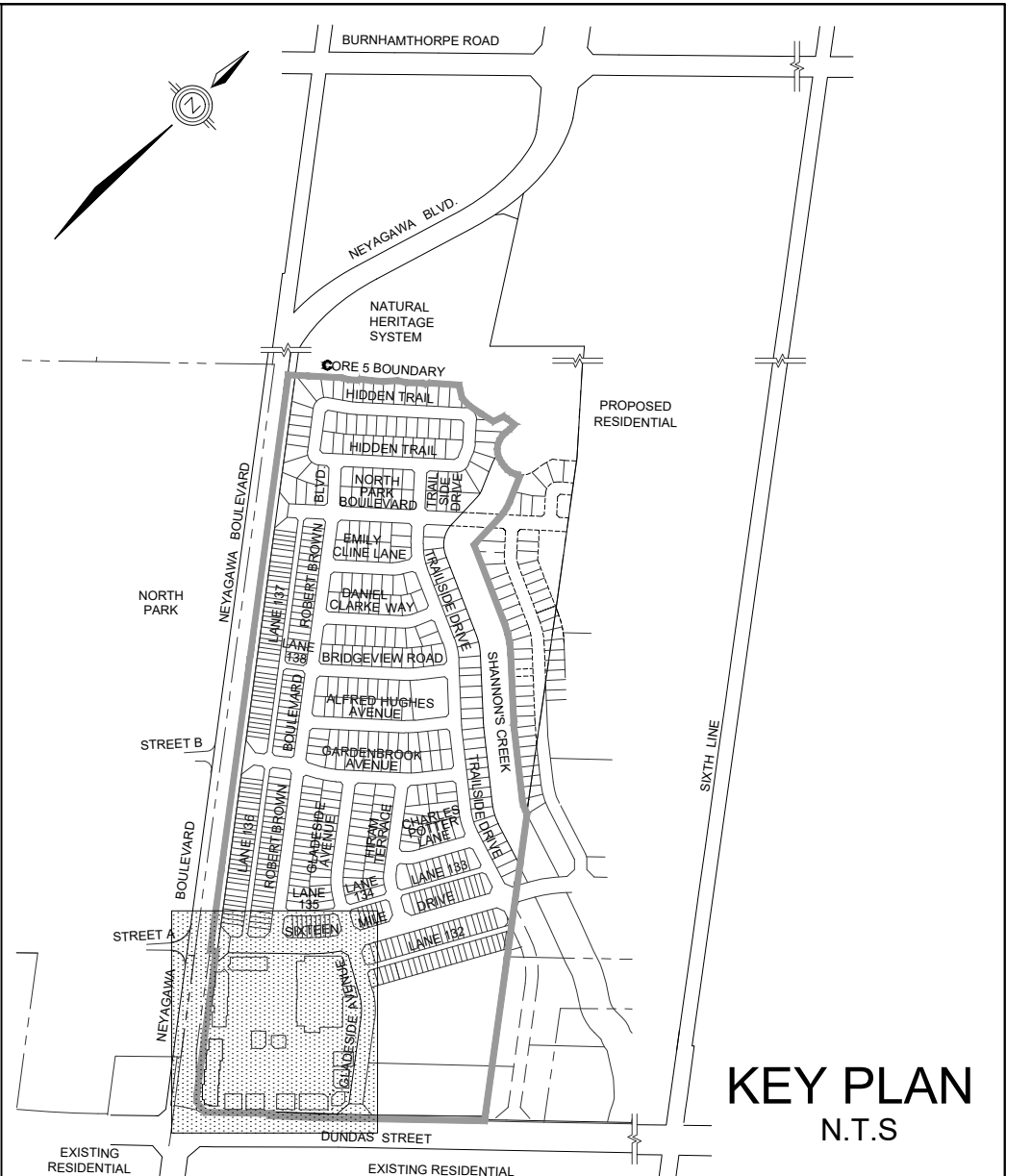


- DRAINAGE AREA IN HECTARES
RUN-OFF COEFFICIENT
- EXTERNAL DRAINAGE AREA IN HECTARES
EXTERNAL RUN-OFF COEFFICIENT
- OVERLAND FLOW DIRECTION
- EXTERNAL OVERLAND FLOW DIRECTION
- SINGLE CATCHBASIN
- DOUBLE CATCHBASINS
- STORM SEWER TRIBUTARY BOUNDARY
- EXTERNAL STORM SEWER TRIBUTARY BOUNDARY
- 100% INFILTRATION SUBDRAIN



TOPOGRAPHIC INFORMATION
 TOPOGRAPHIC INFORMATION PROVIDED BY RADY-PENK & EDWARD SURVEYING LTD., PROJECT No. 07212-06, TOPOGRAPHIC SURVEY DATED ON SEPTEMBER 8, 2009.

SITE PLAN INFORMATION
 SITE PLAN PROVIDED BY GRAZIANI + CORAZZA ARCHITECTS INC., PROJECT No. 1241.14, RECEIVED ON JUNE 26, 2020.
 LANDSCAPE PLAN PROVIDED BY COSBURN GIBSON, PROJECT No. 2264, RECEIVED ON MAR 02, 2020.

BENCHMARK No. 00819828155 ELEVATION = 176.531m
 ELEVATIONS ARE GEODETIC AND ARE REFERRED TO THE ONTARIO MINISTRY OF TRANSPORTATION BENCHMARK No. 0081981813, HAVING AN ELEVATION OF 176.531 METRES. THE BENCHMARK IS A STEEL ROD WITH BRASS CAP ON THE EAST SIDE OF FOURTH LINE ROAD, 137.5m SOUTH OF THE JCT OF BURNHAMTHORPE ROAD AND FOURTH LINE ROAD IN OAKVILLE, AND 8.5m EAST OF THE CENTRELINE OF FOURTH LINE ROAD. BENCHMARK IS SET 17.6m SOUTH OF HYDRO POLE, 1.1m WEST OF EAST RIGHT-OF-WAY FENCE OF FOURTH LINE ROAD AND IS MARKED BY A STEEL MARKER 36cm SOUTH OF BENCHMARK.

No.	DATE	BY	REVISIONS	APPROVED
6	21-03-03	K.M.	ISSUED FOR BUILDING PERMIT	
5	20-06-29	P.P.	UPDATED AS PER REVISED ARCHITECT SITE PLAN	
4	20-06-01	P.P.	UPDATED AS PER REVISED ARCHITECT SITE PLAN	
3	20-03-06	P.P.	3rd SUBMISSION	
2	17-07-19	W.L.	2nd SUBMISSION	
1	16-10-24	Z.L.	1st SUBMISSION	

DESIGNED BY:	R.Y.	CHECKED BY:	P.P.	DATE	MARCH 2016
DRAWN BY:	R.Y.	CHECKED BY:	P.P.	REFERENCES	
SCALE	HORIZ. 1:500	0 5 10 15 20		FIELD NOTES	

APPROVALS

MUNICIPAL APPROVED IN PRINCIPLE SUBJECT TO DETAIL CONSTRUCTION CONFORMING TO TOWN OF OAKVILLE STANDARDS AND SPECIFICATIONS

MANAGER OF DEVELOPMENT SERVICES DATE

REGIONAL APPROVAL REGION DESIGN OF WATER &/OR WASTEWATER SERVICES APPROVED SUBJECT TO DETAIL CONSTRUCTION CONFORMING TO HALTON REGION STANDARDS & SPECIFICATIONS & LOCATION APPROVAL FROM AREA MUNICIPALITY.

SIGNED:

DSEL
 david schaeffer engineering ltd
 600 Alden Road, Suite 700
 Markham, Ontario, L3R 0E7
 Tel. (905) 475-3080
 Fax (905) 475-3081
 www.DSEL.ca

MUNICIPALITY **OAKVILLE**
 DEVELOPMENT SERVICES

REGION **Halton**
 The Regional Municipality of Halton

DEVELOPER **LONDON HILLS BUILDERS LTD.**

PROJECT **DUNDAS MARKET SQUARE**
 509 DUNDAS STREET WEST

TITLE **STORM DRAINAGE PLAN**

SITE PLAN FILE NO.	1320.005/01	REGIONAL FILE NO.	XX-XXX
PROJECT NO.	15-829	SHEET	5 OF 8