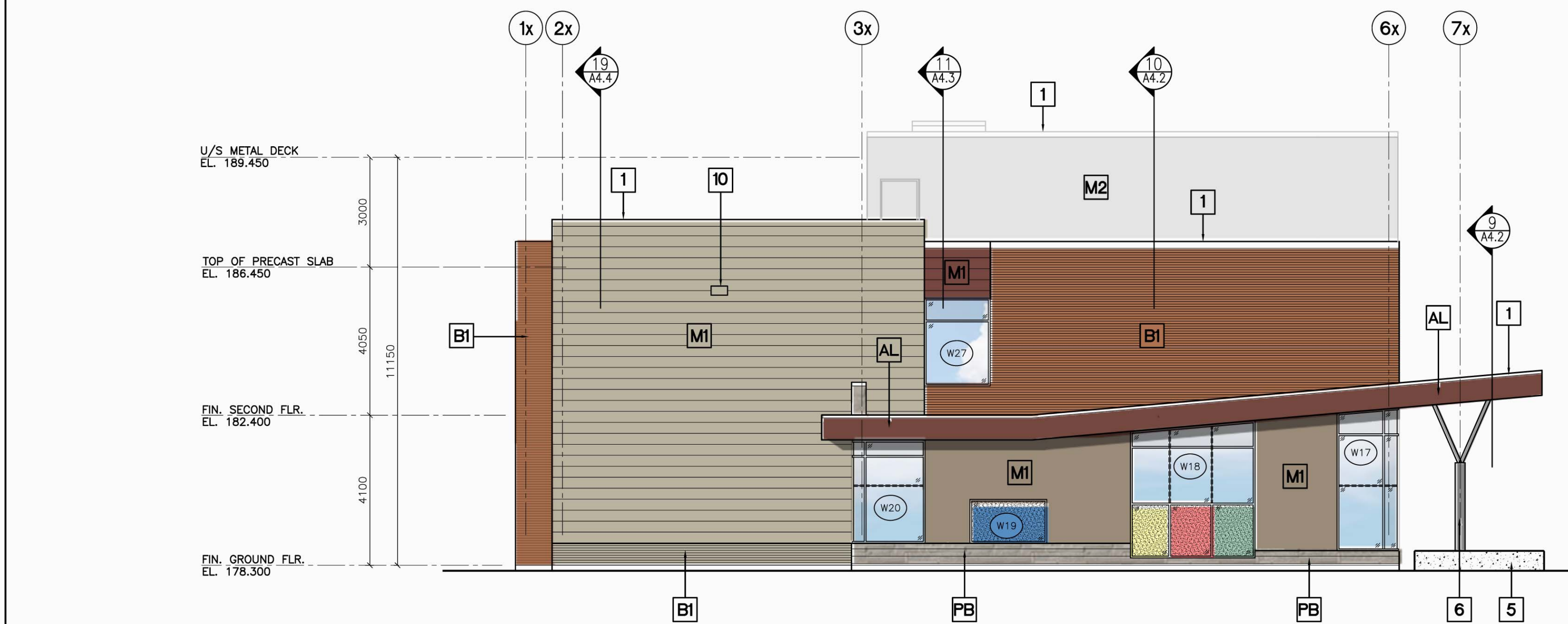
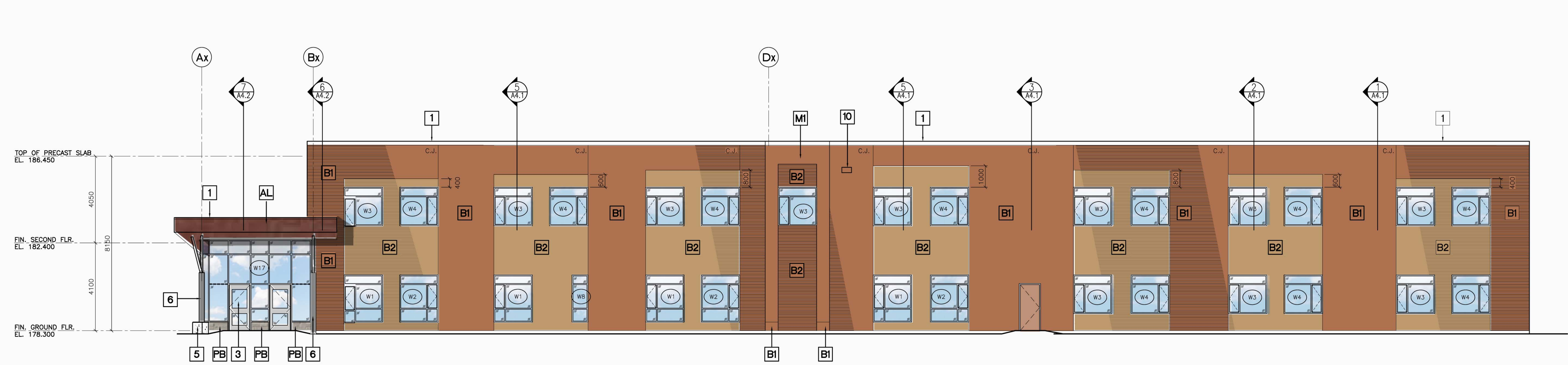


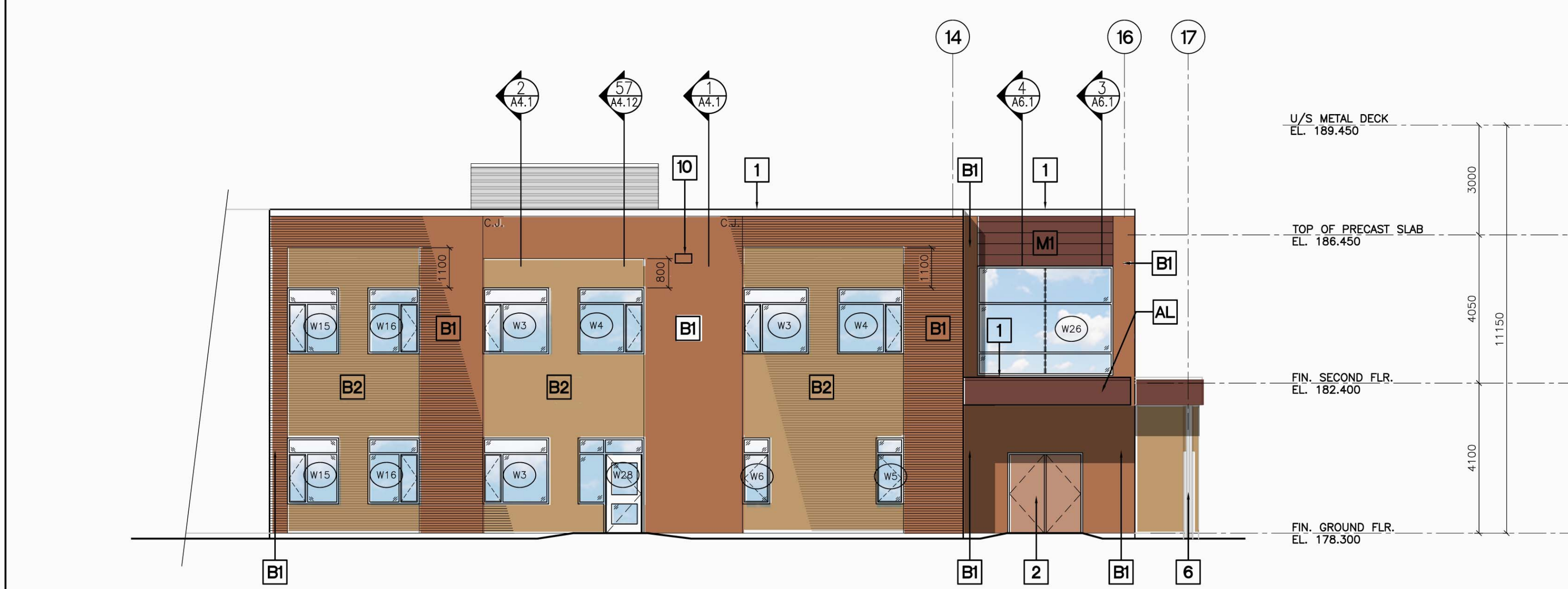
1 NORTH ELEVATION
SCALE 1:100



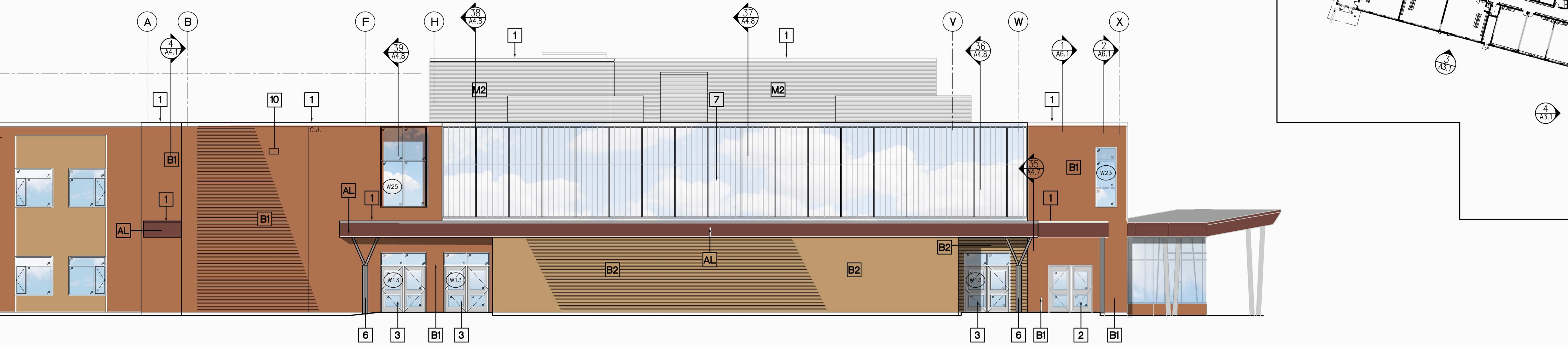
2 WEST ELEVATION
SCALE 1:100



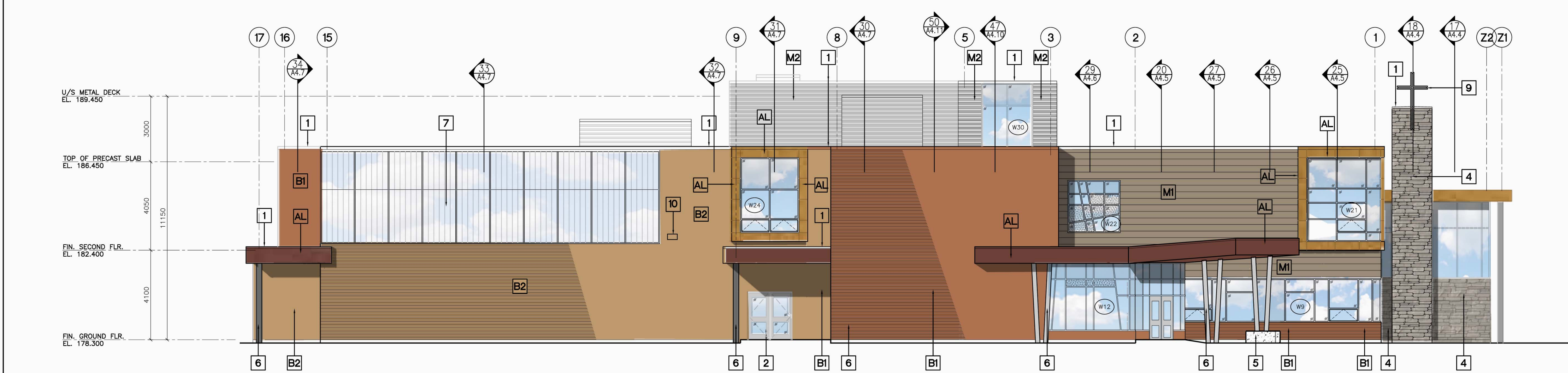
3 PART SOUTH ELEVATION
SCALE 1:100



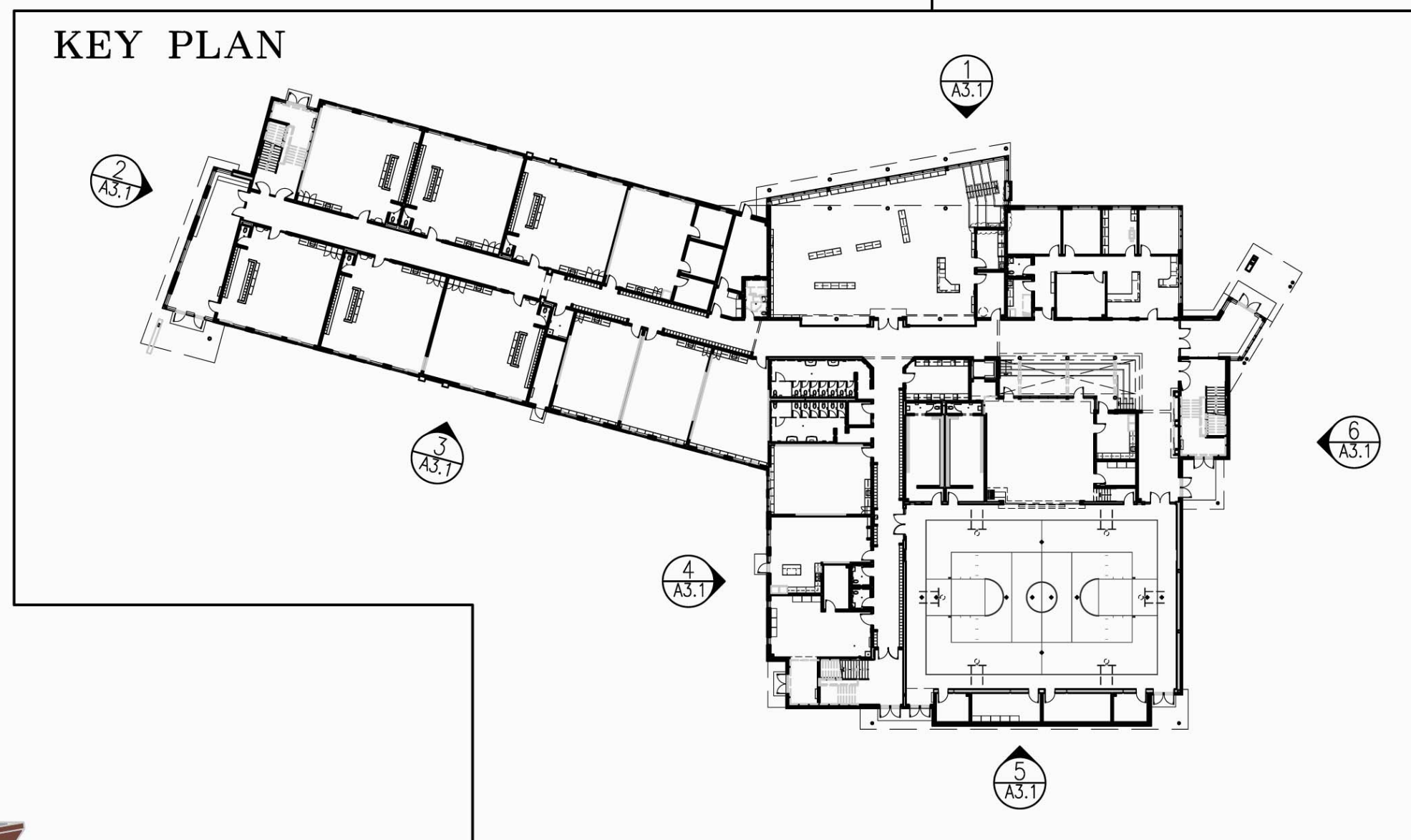
4 PART WEST ELEVATION
SCALE 1:100



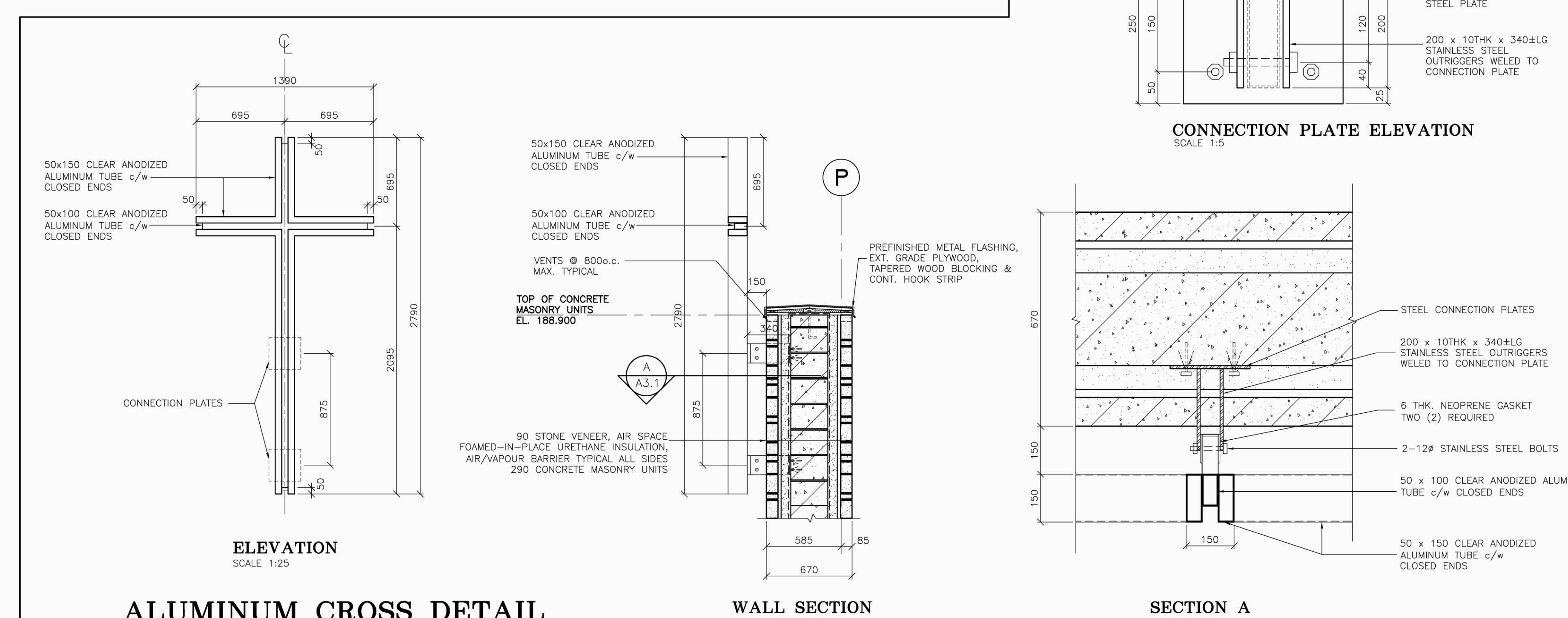
5 PART SOUTH ELEVATION
SCALE 1:100



6 EAST ELEVATION
SCALE 1:100



- GENERAL NOTES:**
- CONTROL JOINTS IN BRICK VENEER TO BE AT A MAXIMUM 6000 CENTRES. GENERAL CONTRACTOR TO VERIFY FINAL LOCATIONS WITH ARCHITECT.
 - REFER TO MECHANICAL AND ELECTRICAL DRAWINGS FOR ALL RELATED WORK INCLUDING LOUVERES AND GRILLES.
 - WALL MOUNTED LIGHT FIXTURES, PROGRAM BELLS, SPEAKERS/SENSORS AND ALL OTHER WALL MOUNTED ITEMS SHOWN FOR REFERENCE ONLY. CONSULTANTS TO VERIFY FINAL LOCATIONS AND MOUNTING HEIGHTS.
- LEGEND:**
- BR-1: BRICK TYPE 1
 - BR-2: BRICK TYPE 2
 - PB: POLISHED BLOCK
 - MWP-1: METAL WALL PANELS
 - MWP-2: METAL WALL PANELS
 - ACM-??: COMPOSITE WALL PANELS (ACM-??)
 - ACM-??: COMPOSITE WALL PANELS (ACM-??)
 - W: WINDOW TYPE
 - 1: PREFINISHED METAL FLASHING
 - 2: HOLLOW METAL DOOR & FRAME/ENTRANCE SCREEN
 - 3: ALUMINUM DOOR & FRAME ENTRANCE SCREEN
 - 4: STONE
 - 5: EXPOSED ARCHITECTURAL FINISHED CONCRETE (AFC) COLUMN PIER c/w CHAMFERED EDGES.
 - 6: GALVANIZED STEEL COLUMN
 - 7: KALWALL
 - 8: SCHOOL SIGNAGE
 - 9: ALUMINUM CROSS. REFER TO DETAILS THIS DRAWING
 - 10: EXTERIOR LIGHTING
- C.J.: CONTROL JOINT
NOTE: REFER TO ARCHITECTURAL SPECIFICATIONS FOR DESCRIPTION OF MATERIALS



No.	DATE	DESCRIPTION
1.	04/19/22	ISSUED SPA COMMENTS

REVISIONS

ARCHITECTS ASSOCIATION OF ONTARIO
HALTON CATHOLIC DISTRICT SCHOOL BOARD
SVEDAS / ARCHITECTS INC.
 9600 BELLING COURT, SUITE 100
 BURLINGTON, ONTARIO L7N 3N6
 TEL: (905) 308-7771

OAKVILLE No. 4 ELEMENTARY SCHOOL
 420 THRESHING MILL BLVD.
 OAKVILLE ONTARIO

BUILDING ELEVATIONS

SCALE	DRAWN	PROJECT No.
AS NOTED	LMR	120809
DATE	CHECKED	DRAWING No.
APRIL 19, 2022	MM	A3.1

PLTWAVE: © Svedas Architects Inc. 2022. All rights reserved. No part of this drawing may be reproduced without the written permission of Svedas Architects Inc.